

# Data-At-A-Glance: College Completion



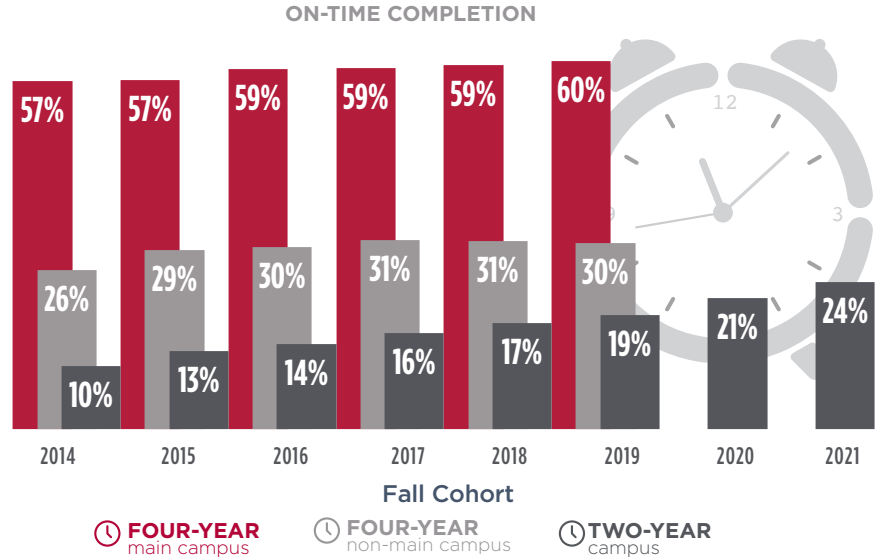
ON TIME  
**48%**  
EXTENDED TIME  
**68%**  
STATEWIDE  
**COMPLETION**  
RATES

## Completion rates continue to improve in Indiana.

At public institutions, 48 percent of all Indiana college students graduate on time. More than 2 out of 3 (68 percent) of all students complete college within six years.

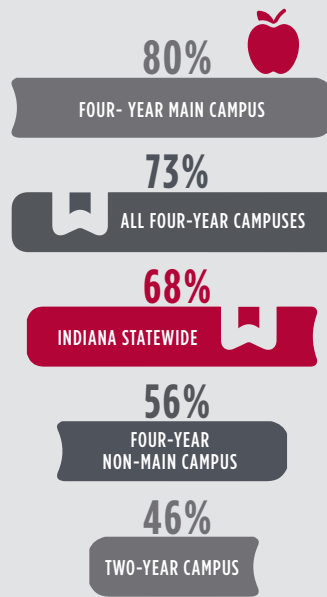
## ON-TIME COMPLETION

Same campus and degree level

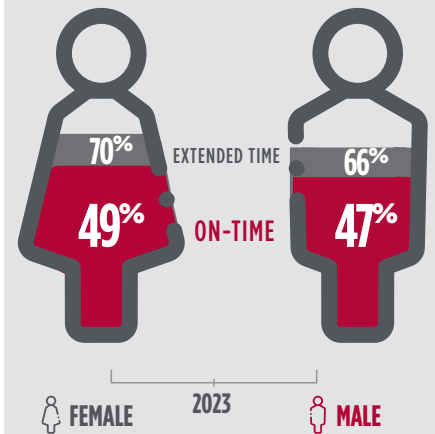


## EXTENDED-TIME COMPLETION

Any campus or degree level within six years



## GENDER BREAKDOWN



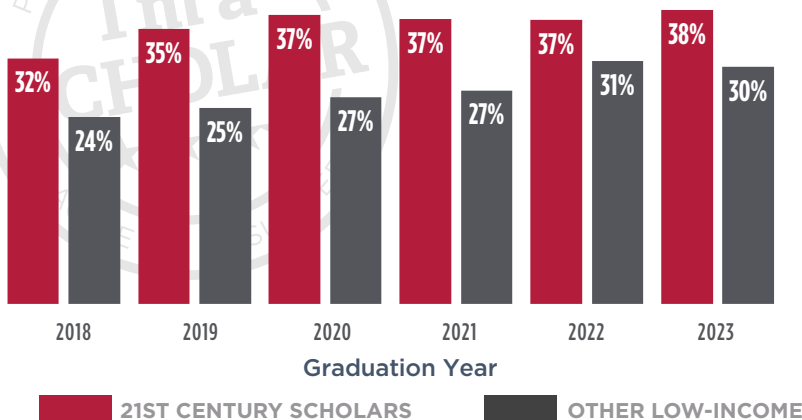
In both on-time and extended completion, male graduate at a lower rate than their female counterparts.

# Data-At-A-Glance: College Completion

## SCHOLARS ON TRACK

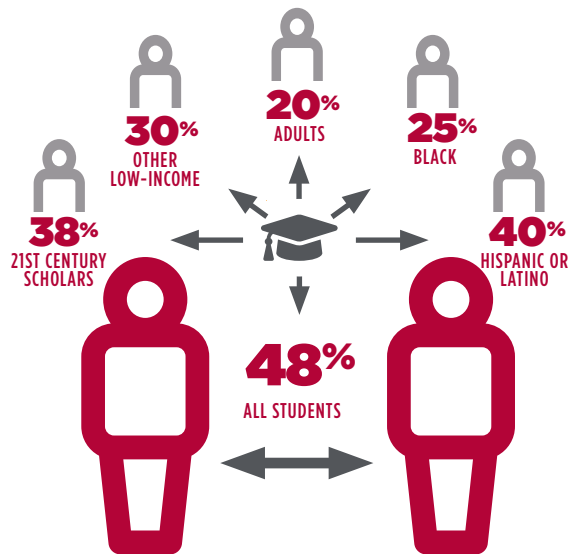
21st Century Scholars consistently graduate on time at higher rates than their low-income peers who are not Scholars.

ON-TIME COMPLETION BY INCOME GROUP

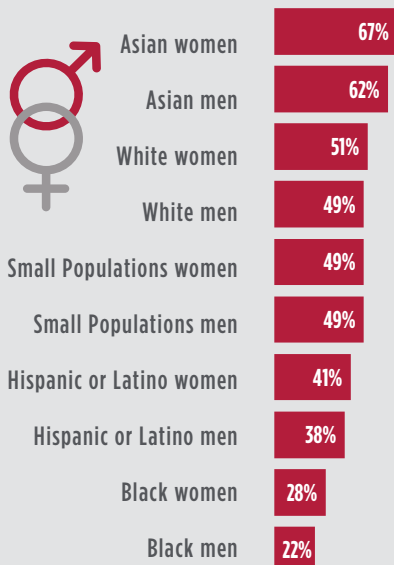


## GAPS PERSIST

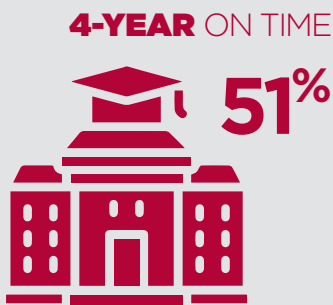
Adult learners, low-income and students from underrepresented populations are less likely to graduate on time than their peers across all campus types.



## ON-TIME COMPLETION BY RACE, ETHNICITY AND GENDER



## COMPLETION ACROSS 4-YEAR CAMPUSES



## COMPLETION ACROSS 2-YEAR CAMPUSES

