

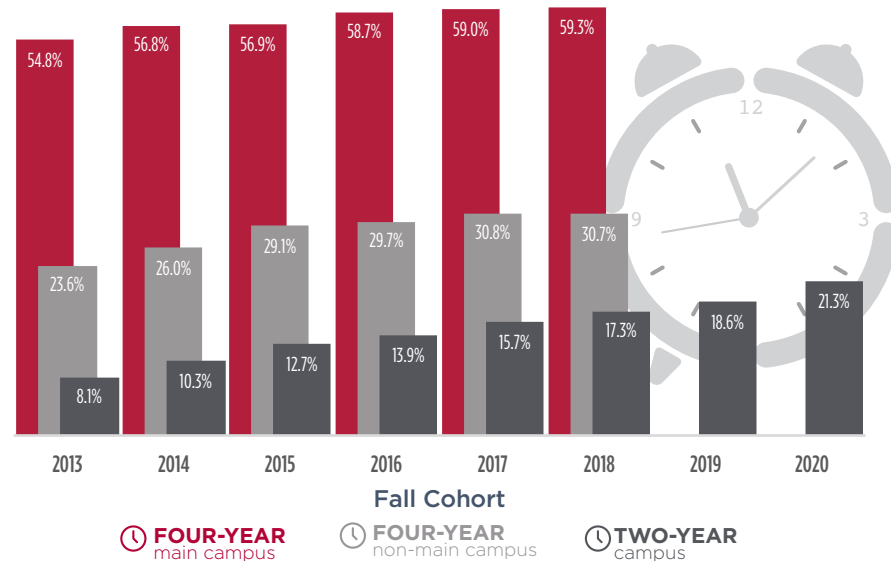
ON TIME  
**47.2%**  
EXTENDED TIME  
**67.4%**  
STATEWIDE  
**COMPLETION**  
RATES

Completion rates continue to improve in Indiana.

At public institutions, 47.2 percent of all Indiana college students graduate on time. 2 out of 3 (67.4 percent) of all students complete college within six years.

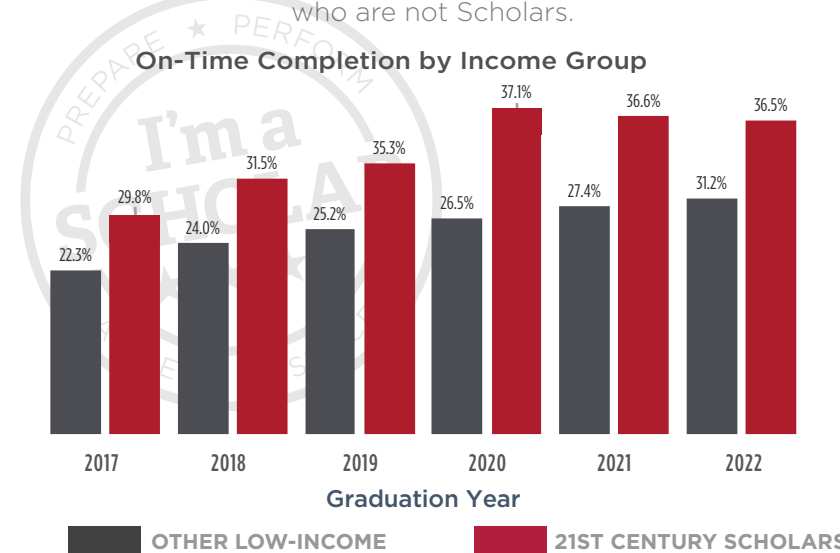
ON-TIME COMPLETION

Same campus and degree level



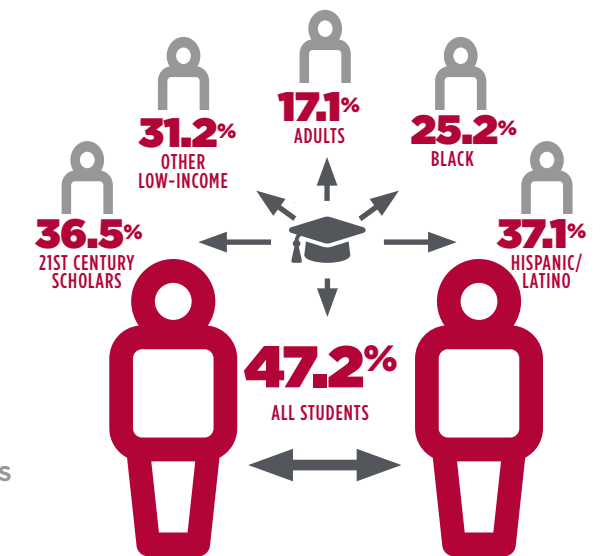
SCHOLARS ON TRACK

21st Century Scholars consistently graduate on time at higher rates than their low-income peers who are not Scholars.



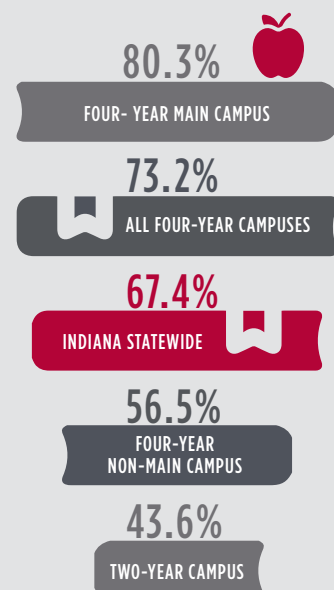
GAPS PERSIST

Adult learners, low-income and students from underrepresented populations are less likely to graduate on time than their peers across all campus types.

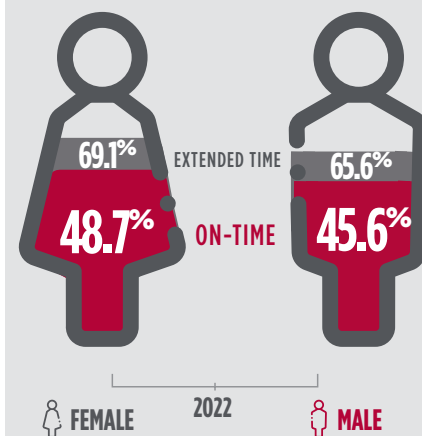


EXTENDED-TIME COMPLETION

Any campus or degree level within six years



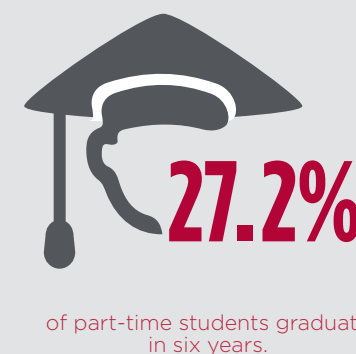
GENDER BREAKDOWN



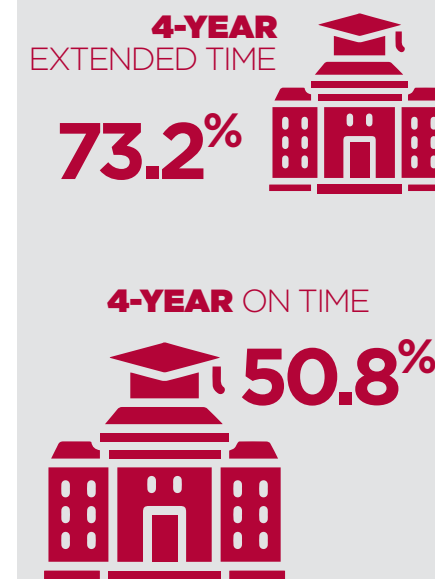
In both on time and extended completion, men graduate at a lower rate than their women counterparts by over 3 percentage points.

PART-TIME STUDENTS

91% of part-time students start at two-year campuses. The extended-time completion rate of those who start part-time has decreased by 3.2 percentage points between 2021 and 2022 and overall increased by 4.9 percentage points in five years.



COMPLETION ACROSS 4-YEAR CAMPUSES



COMPLETION ACROSS 2-YEAR CAMPUSES

