



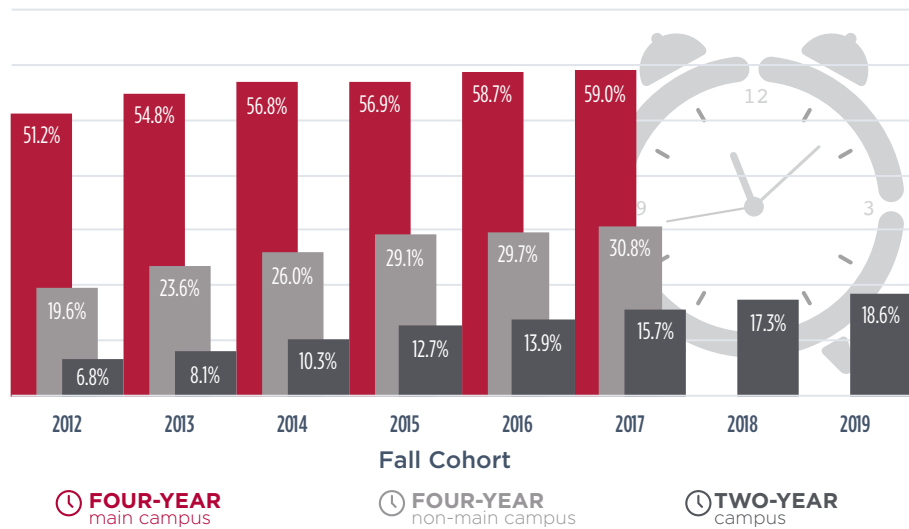
ON TIME
45.3%
 EXTENDED TIME
66.1%
 STATEWIDE
COMPLETION
 RATES

Completion rates continue to improve in Indiana.

At public institutions, 45.3 percent of all Indiana college students graduate on time. Nearly 2 out of 3 (66.1 percent) of all students complete college within six years.

ON-TIME COMPLETION

Same campus and degree level



EXTENDED-TIME COMPLETION

Any campus or degree level within six years

79.4%



FOUR-YEAR MAIN CAMPUS

72.2%

ALL FOUR-YEAR CAMPUSES

66.1%

INDIANA STATEWIDE

56.9%

FOUR-YEAR NON-MAIN CAMPUS

42.5%

TWO-YEAR CAMPUS

ADULT STUDENTS

13.9%

OF ADULT STUDENTS COMPLETED ON TIME (2021)



42.0%

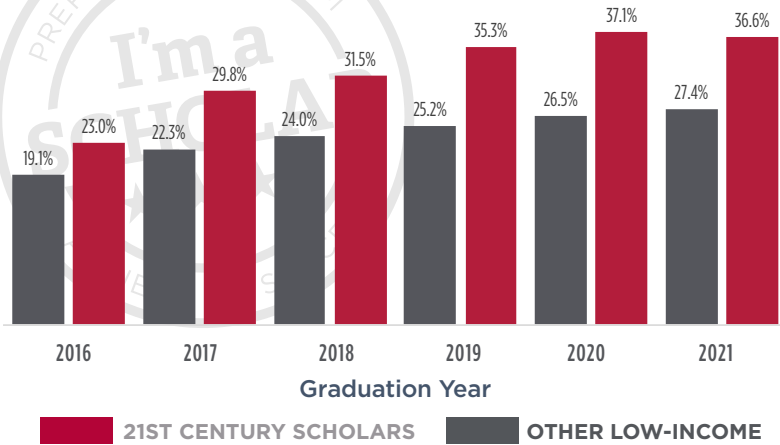
OF ADULT STUDENTS COMPLETED IN EXTENDED TIME (2021)

Extended-time completion rates for adults have improved by **6.3 percentage points** between 2019 and 2020. But there was a **1.5-percentage point drop** in on-time completion in that same timeframe.

SCHOLARS ON TRACK

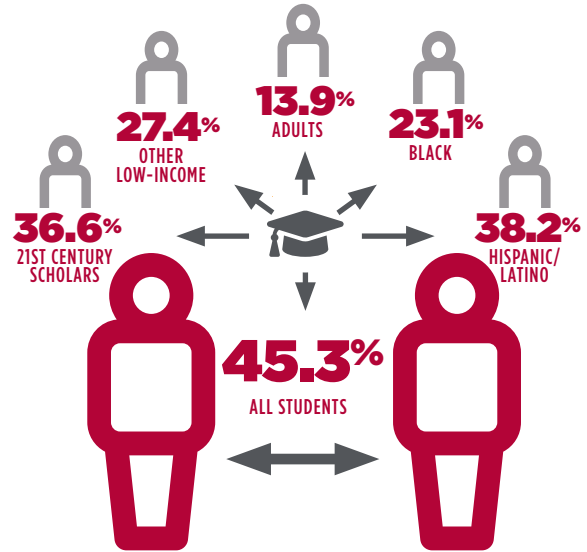
21st Century Scholars consistently graduate on time at higher rates than their low-income peers who are not Scholars.

On-Time Completion by Income Group



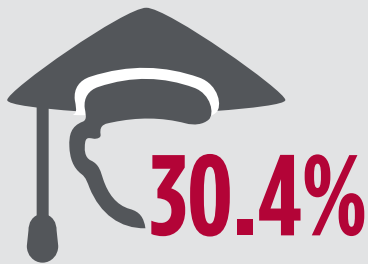
GAPS PERSIST

Adult learners, low-income and students from underrepresented populations are less likely to graduate on time than their peers across all campus types.



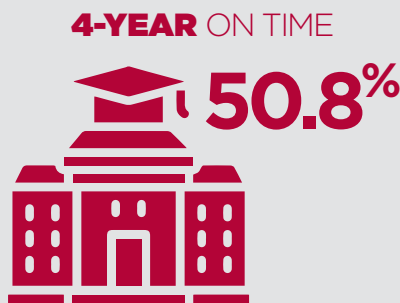
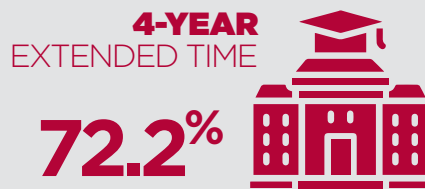
PART-TIME STUDENTS

90% of part-time students start at two-year campuses. The extended-time completion rate of those who start part-time has improved by 4.4 percentage points between 2019 and 2020 and 10.5 percentage points in five years.



of part-time students graduate in six years.

COMPLETION ACROSS 4-YEAR CAMPUSES



COMPLETION ACROSS 2-YEAR CAMPUSES

