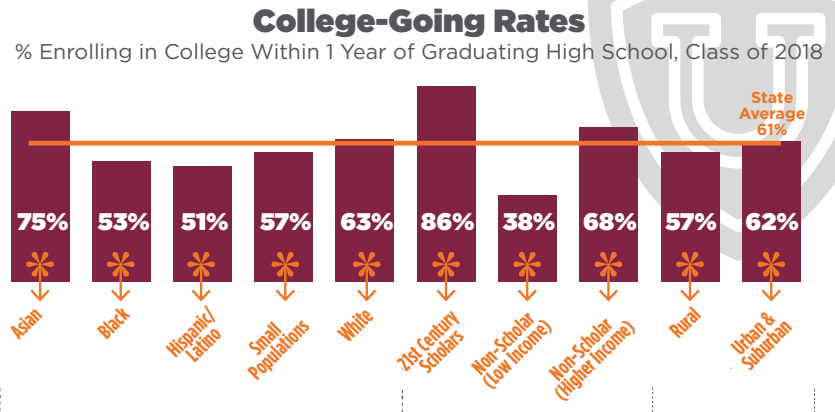


COLLEGE-GOING RATE

21st Century Scholars have the highest college-going rates in Indiana.



Students of color are less likely than the statewide average to earn dual credit while in high school, go to college and complete college on time.

RACIAL AND ETHNIC GAPS

Dual credit and AP:

Statewide average: 64%
 Black: 39%
 Hispanic and Latino: 53%

College-going:

Statewide average: 61%
 Black: 53%
 Hispanic and Latino: 51%

4-year on-time completion:

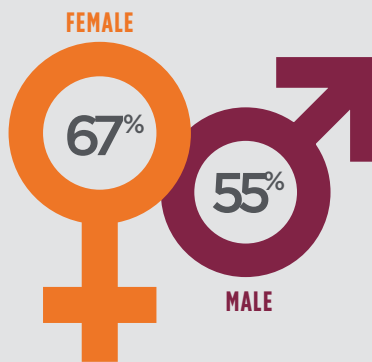
Statewide average: 48%
 Black: 27%
 Hispanic and Latino: 37%

2-year on-time completion:

Statewide average: 16%
 Black: 6%
 Hispanic and Latino: 16%

GENDER DISPARITIES

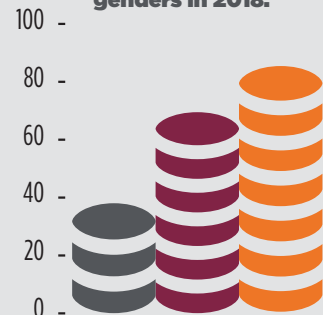
Among new high school graduates, 67% of women and 55% of men went to college in 2018. **Gender disparities track across all races and ethnicities.**



SOCIOECONOMIC IMPACT

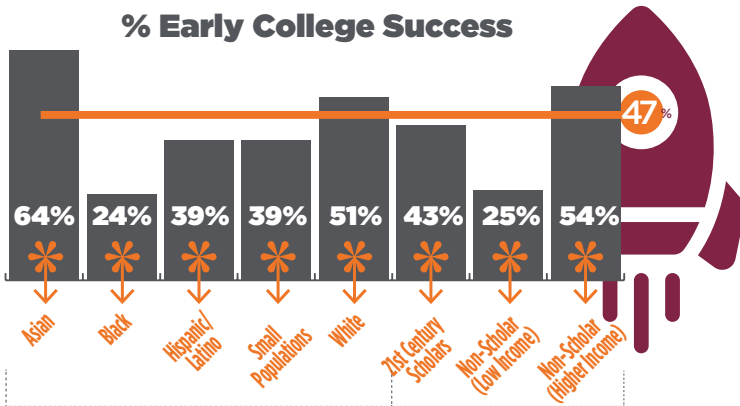
Poverty has a direct impact on college-going rates. Hoosier students who are low-income and not part of the 21st Century Scholars program go to college at **38%**, compared to **68%** for higher-income peers and **86%** for 21st Century Scholars.

White, low-income, non-Scholar men had the lowest college-going rates of all races/ethnicities and genders in 2018.



EARLY SUCCESS METRICS

Early success in college is measured by three metrics: no remediation, completing all coursework and persisting to the second year.

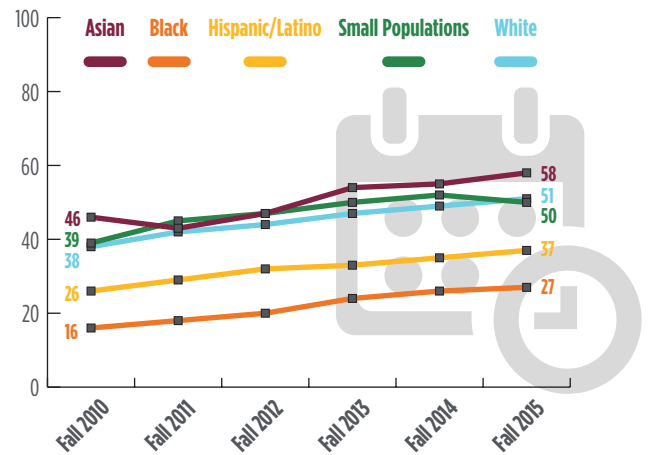


Students struggle the most with completing all coursework attempted. This is associated with the largest achievement gaps in early success.

COMPLETION RATES

All races and ethnicities have improved completion rates over the past five years at two- and four-year colleges. However, gaps have increased for Black Hoosiers seeking both associate and bachelor's degrees.

Bachelor's Degree Seekers On-Time Completion Rates



EARLY COLLEGE CREDIT

Black and Hispanic students who earn AP or Dual Credit are more likely to complete on-time at two- and four-year campuses.

On-Time Completion at Four-Year Institutions

Black Students



Earned AP or Dual Credit: **32%**
Did not earn AP or Dual Credit: **18%**

Hispanic/Latino Students

Earned AP or Dual Credit: **37%**
Did not earn AP or Dual Credit: **23%**

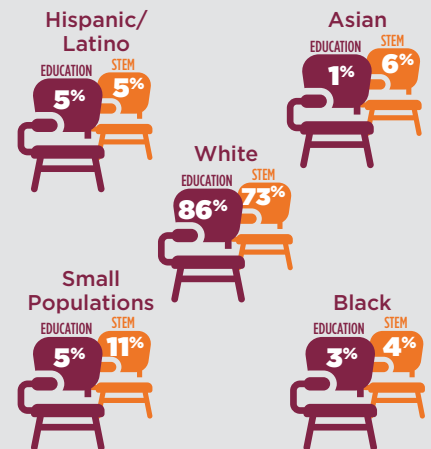


21st CENTURY SCHOLARS



86% of 21st Century Scholars go to college, above the statewide average of 61%. 21st Century Scholars are **the only group on track to close Indiana's college-going achievement gaps** by 2025.

PROGRAMS OF STUDY



Less than 15% of all of Indiana's teaching graduates are non-White. **26% of STEM or health** graduates are non-White.