

# FIELD TRIPS

AT THE INDIANA STATE FAIR



INDIANA STATE FAIRGROUNDS  
**THE BARNs**  
GLOBAL LEARNING INITIATIVE



INDIANA  
**STATE FAIR**

# Letter from State Superintendent

Dear Indiana Educators,

For more than 160 years, the Indiana State Fair has been creating special memories for Hoosiers from all corners of our state, while educating the public about Indiana agriculture. Trips to the State Fair are a great way to continue this tradition for your students. We encourage all districts to promote this opportunity.



I hope you will consider the varying quality educational experiences at the 2017 Indiana State Fair. The Indiana State Fair's Education Department offers many experiences for educators, student, and families. Such experiences include self-guided educational journeys for students in grades K-12, more than 20 educational exhibits, and standards-based learning opportunities. Lastly, the Indiana State Fairgrounds & Event Center has been delivering standards-based fieldtrips since 2007 and promises to offer a great experience in 2017. Visit [www.IndianaStateFairFieldtrips.com](http://www.IndianaStateFairFieldtrips.com) for more information and to register your class.

See you at the Fair!

Dr. Jennifer McCormick

A handwritten signature in black ink that reads "Dr. Jennifer McCormick". The signature is fluid and cursive, with a large initial "J" and "M".

# Indiana School Teachers

Start the school year with a memorable educational field trip to the 2017 Indiana State Fair. Indiana State Fair Field trips are an opportunity for Classroom and Home Educators to enhance curriculum by utilizing an educational experience that cannot be accomplished in the classroom setting. Educators will be able to create a unique self-guided field trip experience by selecting from participating exhibits at the Indiana State Fair. The educational activities and exhibits are explained in this booklet.

## Dates and Times

Every weekday except Opening Day (August 4th) and Tuesdays (Aug. 8th and 15th)

## Experience includes:

1. \$4.00 Admission Fee (for registered students AND chaperones) Teachers are FREE.
2. Free Bus parking.
3. Cross-Curricular Educational Opportunities (Science, Social Studies, Math, Language Arts, Fine Arts).
4. Post-visit lesson plans to expand on the students' experience at the Indiana State Fair.
5. Lunch area available for students to enjoy sack lunch. Food can also be purchased on the grounds.

Register at **[IndianaStateFairFieldtrips.com](http://IndianaStateFairFieldtrips.com)**

If you have any questions or concerns, please contact Brad Grieshop at **[brgrieshop@indianastatefair.com](mailto:brgrieshop@indianastatefair.com)** or **317-927-7568**.

# Harvest Pavilion

Over the centuries, humans have shaped the crops we grow and the animals we raise to suit our needs, creating countless varieties adapted to local conditions.

Taking visitors on a journey around the world and through time, this exhibition explores the common interactions we have with our food, examining the intricate system that brings what we eat from the farm to our tables. Through digital interactives, rich dioramas, cultural artifacts, and striking models, visitors will experience stories of how humans have shaped the foods we know, and how food has shaped us.

With opportunities to cook a virtual meal, see rare artifacts and peek into the dining rooms of famous figures throughout history, students will examine the intersection of food, nature, culture, health, and history.

**Grade Level:** 4-12

**Curriculum Tie In:** Food, Culture, Geography, Social Studies, Health, and Science

Our Global Kitchen: Food, Nature, Culture is organized by the American Museum of Natural History, New York ([www.amnh.org](http://www.amnh.org)).



# Little Hands on the Farm

Little Hands on the Farm is an interactive mock farm that includes 13 interactive barns. Participants engage in the agricultural process as a “farmer” would. The participants have the chance to harvest products, do chores on the farm (ranging from collecting apples, to gathering eggs from the chicken coop, to planting a tomato or pepper seed and milking a cow). They then receive money for their work that they can use to buy food at the grocery store. It is the perfect environment for receiving the complete agricultural experience.

**Grade Level:** K-2

**Curriculum Tie In:** Plant Science, Agriculture



# Take Out Garden

Students exploring the Indiana State Fair Greenhouse receive a Take Out Garden after participating in an interactive scavenger hunt. These small “to go” containers are filled with everything needed to plant their own garden at home or school. Students can select from one of several gardens including: Pizza, Taco, Flower, and Herb.

**Grade Level:** K-12

**Curriculum Tie In:** Plant Science



# The Wonder Trail

## Presented by Indiana Farm Bureau

The Wonder Trail is a self-guided trail around the Indiana State Fair that enhances classroom curriculum or family discussion by utilizing agriculture as a teaching model. Participants have the opportunity to explore agriculture by following the trail around the Fairgrounds engaging in 12 different exhibits, by navigating a map. Curriculum varies year to year, allowing for many educational opportunities.

**Grade Level:** 2-8

**Curriculum Tie In:** Geography



# Normandy Barn

This exhibit features interactive activities for long-lasting impressions of Indiana agriculture. It bridges components of large, contemporary agriculture and farm products known to students, as well as showing unique crops grown in Indiana on a smaller scale.



**Grade Level:** 4-12

**Curriculum Tie In:** Agriculture, Science



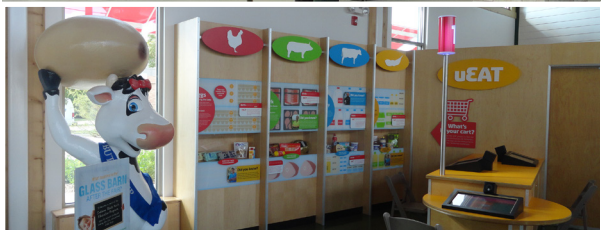


# Glass Barn

The Glass Barn, presented by Indiana Soybean Farmers, is a unique hands-on educational center, full of engaging exhibits and leading-edge technology that brings the farm directly to the visitor. The Glass Barn is the premier destination for educating students about the science and technology involved in soybean farming. Using engaging displays, interactive games and programs, it allows visitors to learn about the farming life, farmers' connections with the land and the technology they use to work it. The Glass Barn is also host to daily "Live Farmer Chats" via FaceTime, where students can learn about careers associated with modern Indiana Farmers

**Grade Level:** 3-12

**Curriculum Tie In:** Science, Technology, Reading



# Pioneer Village

Students have the chance to experience rural life and farming as it was in “days gone by” at Pioneer Village. They are able to enjoy seeing farm animals and restored antique tractors up close. There are 1920’s steam engines with vintage farm equipment sawing logs into lumber, threshing wheat, shelling ear corn, and more. Live “old-time” music and stage shows add to the charm while you watch experts create quilts, spin yarn, hook rugs, and make brooms! Watch the cooper, potter, artists, woodworkers, wheelwrights as well as coppersmith use hand and foot-powered tools and machines as they create, build and repair early agriculture equipment and household items. Guests may also visit a 19th century log cabin, general store, and early 20th century barbershop.

**Grade Level:** K-12

**Curriculum Tie In:** Indiana History

**Daily Demos:** Thrashing - 10AM



# Farm Bureau Building

The Indiana Farm Bureau Building offers information about Indiana agriculture through its interactive exhibits. Indiana Farm Bureau is Indiana's largest general farm organization. Through educational programs, sound farming and rural Indiana policies it provides education to its members and the public about the importance of farming and agriculture in Indiana. Fairgoers can complete the Ag Fact Adventure scavenger hunt for a prize, play a game on one of three iPads, and learn more about farming and agriculture by playing one of the My American Farm games on any of the six touch screen computers.

**Grade Level:** My American Farm - 4 to 12, Ag Fact Adventure - 5 to 12  
**Curriculum Tie In:** Math, Science, Language Arts, Health, Geography





# Purdue Extension Agriculture Horticulture Building

The Purdue Extension Agriculture/Horticulture Building is home to various exhibits and demonstrations dedicated to Indiana Agriculture, from honey to a giant cheese sculpture that tells the story of Indiana dairy production. Visitors can learn how to better practice conservation at home and advocate its principles in the community. Be sure to explore the basics of climate change science and understand its impacts for Hoosiers and for the world. Fairgoers can “Be Heart Smart”, and learn about how the heart works, the risks they have, how to eat heart healthy and reduce stress with physical activity. Through these interactive exhibits, visitors can see that the decisions they make today will directly affect their tomorrow.



# Department of Natural Resources (DNR) Building

## Live Indiana Snakes

Snakes will be the focus of a daily program at 10AM at the DNR building amphitheater. An interpretive naturalist will provide a talk about snakes in general, and will have the live snakes on display and out for the audience to see up close. Facts about Indiana snakes, venomous vs. non-venomous snakes, habitat needs, food preferences, skin shedding etc. will all be covered in the talk.

**Time: Approximately 40 minutes**





## State Fair Fishin' Pond At the DNR Building

The DNR Fishin' Pond allows children ages 5-17 the opportunity to fish for free. Parents sign-up their kids at the registration table, families listen to a short talk about fishing safety, and then the kids can fish for up to 15 min. After fishing, the whole family can learn more about Indiana fish through a coloring activity and playing with fishy friends.

**Time: Approximately 40 minutes for up to 25 kids**  
(25 is max number of fishing spots)

**Grade Level:** K-12

**Curriculum Tie:** Life science, natural history, Indiana history, Biology, Lifetime Skills, and Human Dimensions

# 4-H Education Complex

Be sure to stop by the 4-H Exhibit Hall and Centennial Hall to see what youth can learn through 4-H. View the non-animal exhibits or check out the fair schedule for the non-animal 4-H events. Events include a number of speaking competitions, performing arts, demonstrations, and education stations. Visit the sewing center where more than twenty quilts are constructed each year for homeless shelters throughout the state or build your own wooden train car in the wood shop. Stop by the Purdue Extension Agriculture Horticulture Building to see more 4-H exhibits.

**Grade Level:** K-12

**Curriculum Tie In:** Social Studies, Science, Language Arts, Geography





# FFA Pavilion

The Indiana State Fair is the Indiana FFA's opportunity to showcase the tremendous accomplishments of our top members and chapters from around the state. The FFA Pavilion is a multi-part exhibit spread throughout three connecting buildings and encompassing over 25,000 square feet. It is one of the Fair's most popular attractions with over 200,000 people coming through the doors each year. The Children's Barnyard, agriculture miniature golf course, interactive children's play areas, and the Country Market bring visitors inside the FFA Pavilion.

**Grade Level:** K-12

**Curriculum Tie In:** Science, Careers



# Girl Scouts Building

The Girl Scouts of Central Indiana provide hands-on exploration in conjunction with an engaging inquiry-based approach to learning while entertaining participants. The activity changes annually but the focus on science, technology, engineering, and math remains consistent.

**Grade Level:** 1-6

**Curriculum Tie In:** Science, Technology, Engineering, and Math



The activity captured is an interactive dig, where participants dig to find “artifacts,” while learning about the world of archeology.

# Boy Scouts Base Camp

Base Camp is operated by Crossroads of America Council, Boy Scouts of America. This space features STEM (science, technology, engineering and math), sustainability, SCOUTStrong (healthy living initiatives), and traditional Scouting activities. Community partners fitting those categories are in attendance daily and offering activities.

**Grade Level:** 1-12

**Curriculum Tie In:** Science, Technology, Engineering, and Math



# LEGO® Display

The LEGO® display is in the Purdue Extension Agriculture/Horticulture Building. It is an engaging hands-on educational opportunity. The structures tell a piece of Indiana's agriculture history. Students are challenged to participate in the Indiana State Fair LEGO® Farm "Seek and Find". There is also a LEGO® building area where students can create and engineer their own structures.

**Grade Level:** K-12

**Curriculum Tie In:** Engineering



# Canstruction®

Canstruction® is a unique international food charity which hosts competitions, exhibitions, and events showcasing colossal structures made out of full cans of food. After the structures are built the creations are on display to the public as a giant art exhibition. At the end of the viewing, all food is donated to local hunger relief organizations.

Students will explore how cans were utilized to build various shaped and sized structures. See how can labels are used to create the visual image. Students will have the opportunity to calculate servings.

**Grade Level:** K-12

**Curriculum Tie In:** Science, Technology, Engineering, and Math



# Purdue School of Veterinary Medicine Spay and Neuter Exhibit

The Spay and Neuter surgery exhibit, provides surgeries over the 17 days for students to observe. The surgeries are needed to prepare Humane Society pets for adoption. The is a partnership between the Purdue University College of Veterinary Medicine and the Indiana Veterinary Medical Association. In addition to the surgeries, veterinarians and veterinary technicians will provide educational demonstrations to visitors about what is new in veterinary medicine and show them how to care for their dog, cat or other animals. Also, veterinary students from the college will meet with the public daily to discuss veterinary-related issues.

**Grade Level:** 6-12

**Curriculum Tie In:** Career Development, Science, Technology



# Indiana History Train

The Indiana Historical Society's Indiana History Train and its "Made in Indiana" exhibit offers students exposure to Indiana Academic Standards for STEM in an entertaining, out-of-school format aboard three renovated freight cars. This exhibit celebrates products with roots in Indiana, from automobiles to medical innovations, musical instruments, and agricultural equipment. Each story highlights one of the invention process steps: define a problem, do research, make a prototype, file a patent, and market the invention. The incorporation of local examples, accompanied by artifacts and video components, provides students with historical context, inspiration and pride in their home state, and opportunities for hands-on learning.

**Grade Level:** K-12 (With emphasis on grade 4)

**Curriculum Tie In:** Indiana History



# Animal Encounters

There are many places to see and learn about animals during a visit to the Indiana State Fair. Here are a few to check out during your visit.

## Baird's Exotic Animal Experience

Ever seen a camel up close? How about a buffalo or an ostrich? Not on your typical Indiana farm. These animals, a zebra, and more can be found within Baird's Exotic Animal Experience in the Family Fun Park!

## Livestock Nursery

Welcoming baby animals at birth is common on numerous Indiana farms, but many Fair visitors have never had the chance to witness such a miracle. The Livestock Nursery houses eight expectant cows, and if the timing is right, you just might be able to observe a baby calf's first moments in the world, standing up for the first time or even its first meal. If you find yourself at the Livestock Nursery at 12PM, 2PM, or 4PM, you can try your hand at milking! The Livestock Nursery is located on Main Street just east of the Hoosier Lottery Grandstand.

## Goat Mountain

Goat, goats and more goats! A number of breeds are represented at this popular exhibit, including the energetic Pygmy goats, Boer goats, the beautiful Angora goat, and various dairy breeds like Alpine, LaMancha and Nubian. Throughout the day, Fairgoers have the opportunity to see goats play and roam the "mountain," directly east of the DNR Building.

**Grade Level:** K-6

**Curriculum Tie In:** Animal husbandry, Animal Habitats, Science





# Livestock Barn Education

Most Americans are at least two generations removed from the family farm, so it is important to create learning opportunities for the consumer to connect to where and how their food is being produced. Educational signs are displayed in the sheep, swine, cattle, rabbit and poultry barns that feature information and facts about food production. Learn more about livestock during the daily Barn Chats.

**Grade Level:** K-12

**Curriculum Tie In:** Animal science, Agriculture



**Kunkel Dairy Inc.**  
**Adams County**  
Hoosier Homestead Farmers  
for 171 years



All milk starts as white milk, but flavoring and coloring can be added to make other milks, such as chocolate or strawberry.



STATE FAIR

Western calf  
weighs 60-110  
pounds at birth.



STATE FAIR

STATE FAIR

STATE FAIR

STATE FAIR

STATE FAIR

STATE FAIR

STATE FAIR

STATE FAIR

An adult dairy cow drinks nearly a bathtub full of water every day.



INDIANA STATE FAIR

INDIANA STATE FAIR

INDIANA STATE FAIR

INDIANA STATE FAIR

INDIANA STATE FAIR

INDIANA STATE FAIR

INDIANA STATE FAIR

INDIANA STATE FAIR

INDIANA STATE FAIR

# 2017 Indiana State Fair Map

1. 4H Exhibit Hall
2. Administration Building
3. Celebration Park
4. Centennial Hall
5. Champions Pavilion  
(Draft Horse Barn)
6. Communications Building
7. Covered Bridge
8. Discovery Hall
9. DNR Amphitheater
10. DNR Building
11. DNR Fishing Pond
12. Elements Financial Blue Ribbon Pavilion  
(Sheep Barn)
13. Exposition Hall
14. Family Fun Park
15. Farm Bureau Building
16. Chevrolet Silverado Free Stage
17. Free Stage Bar
18. Girl Scout's of Central Indiana Bldg.
19. Glass Barn presented by  
Indiana Soybean Alliance
20. Greenhouse
21. Hook's Drug Store  
Museum & Soda Fountain
22. Hoosier Lottery Grandstand
23. Indiana Arts Building
24. Indiana Farmers Coliseum
25. Indiana Young Farmers Building
26. Mac Reynolds Barn
27. Midway Guest Services
28. Normandy Barn
29. Northwest Pavilion  
(Poultry and Rabbit Barn)
30. Pioneer Village Main Building
31. Pioneer Village Opry House
32. Pop Weaver Youth Pavilion
33. Public Safety Center
34. Purdue Extension  
Agriculture/Horticulture Building
35. South Pavilion (Saddle Horse Barn)
36. State Fair Café & Bakery
37. Swine Barn
38. Tractor Supply Co. FFA Pavilion
39. Transportation Center
40. West Pavilion (Cattle Barn)
41. Williamson Pin-Framed Barn



- G Entrance Gates
- ♿ Accessible Parking
- + First Aid Station
- i Information Booth Presented by Prairie Farms
- P Indiana State Police
- T Infield Tunnel
- S Shuttle Stop Presented by Hoosier Lottery
- ♻️ Restroom
- ★ Lactation Station
- 🚭 Designated Smoking Area
- 🚶 Parade Route
- 🛴 Stroller/Wheelchair Rentals
- 🏧 ATM



INDIANA STATE FAIRGROUNDS  
**THE BARNs**  
GLOBAL LEARNING INITIATIVE

[WWW.INDIANASTATEFAIR.COM](http://WWW.INDIANASTATEFAIR.COM)

INDIANA STATE FAIRGROUNDS & EVENT CENTER • 1202 EAST 38TH STREET • INDIANAPOLIS, IN 46205