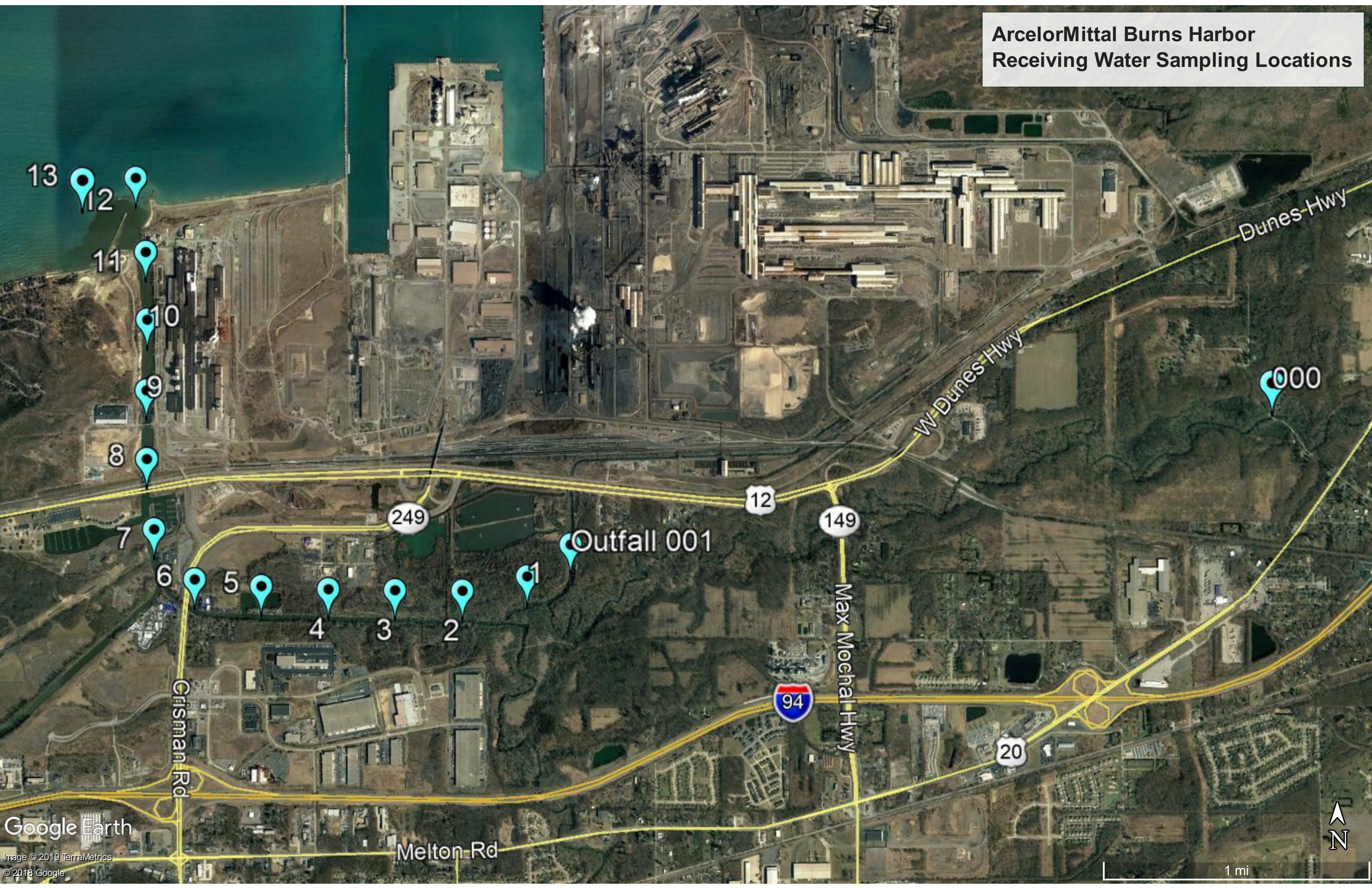


AMBH

Sampling Location Coordinates

Sampling Location	Coordinates
OF 001	41.613920°,-87.145547°
Location 1	41.612192,-87.148685
Location 2	41.611417,-87.153383
Location 3	41.611453,-87.158267
Location 4	41.611497,-87.163115
Location 5	41.611674,-87.167979
Location 6	41.614750,-87.175752
Location 7	41.61475, -87.17575
Location 8	41.618550,-87.176275
Location 9	41.622269,-87.176310
Location 10	41.626115,-87.176251
Location 11	41.629768,-87.176348
Location 12	41.633794,-87.177085
Location 13	41.633502, -87.180952
Location 000	41.622505, -87.094672

ArcelorMittal Burns Harbor  
Receiving Water Sampling Locations

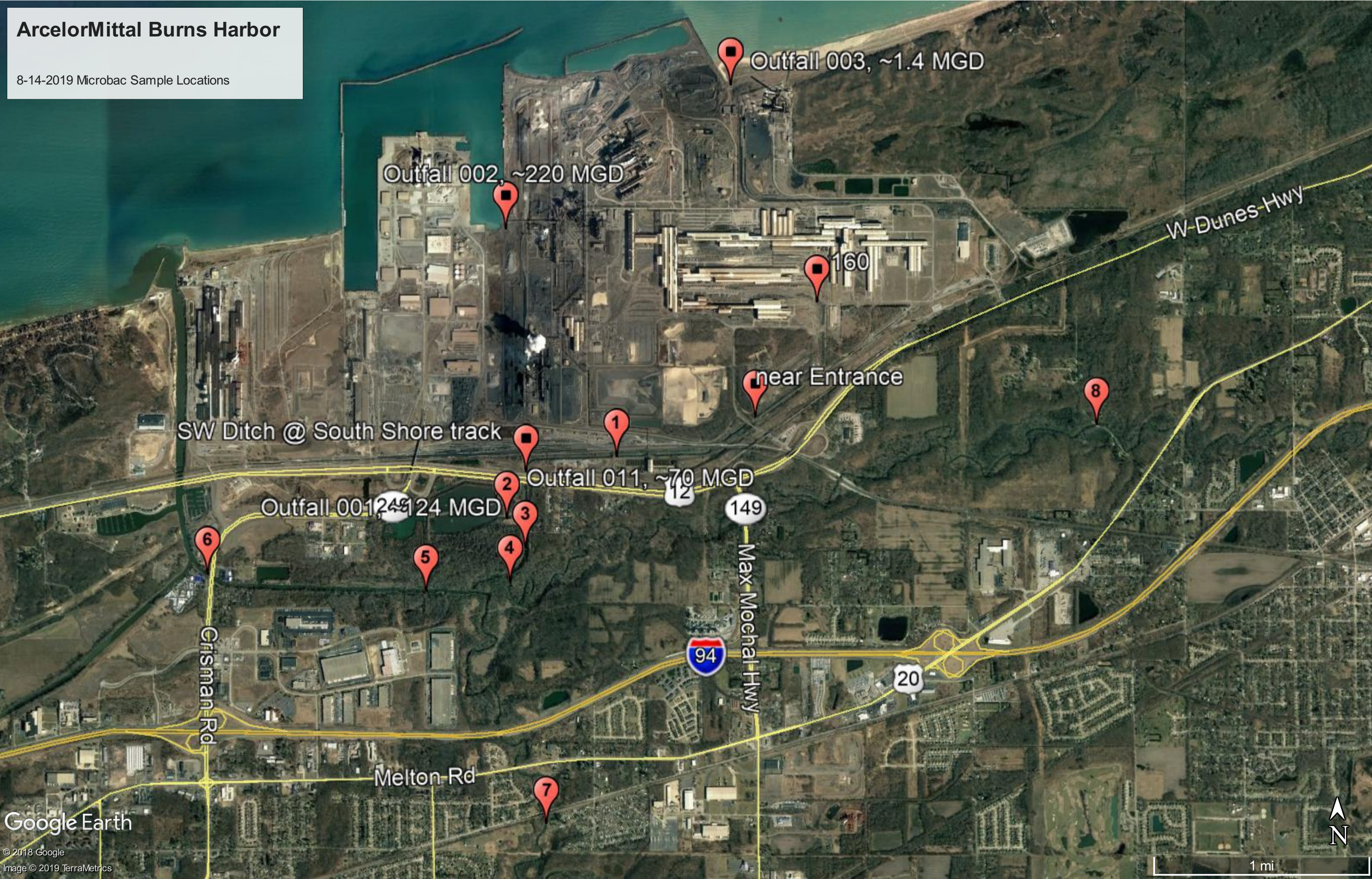


ArcelorMittal Burns Harbor  
8/14/2019 Sampling Locations

Sampling Location ID	Coordinates	Location Description
SW Ditch @ South Shore	41.619345°,-87.145464°	West of SWTP, next to the South Shore tracks
Location 1	41.620377°,-87.137380°	Ditch Line West of SWTP
Location 2 (011)	41.616229°,-87.147169°	OF 011 Sampling Shed
Location 3 (001)	41.614259°,-87.145528°	OF 001
Location 4	41.611993°,-87.146877°	Downstream from OF 001, before the Calumet River mixes with OF 001
Location 5	41.611349°,-87.154375°	Northeast of Bass Pro Shop
Location 6	41.612528°,-87.173864°	State Road 249
Location 7	41.595875°,-87.143658°	Upstream of Salt Creek
Location 8	41.622474°,-87.094585°	Off of Howe Road
Location 160	41.630629°,-87.119515°	Ditch Line East of 160" PM
Location Near Entrance	41.622984°,-87.125025°	Ditch Line North of Main Gate Entrance, just north of train tracks

# ArcelorMittal Burns Harbor

8-14-2019 Microbac Sample Locations



# ArcelorMittal Burns Harbor

8-14-2019 Microbac Sample Locations



Location SW Ditch @ South Shore track  
Total Cyanide: ND  
Dissolved Oxygen: 9.3 mg/l  
Nitrogen, Ammonia as N: 0.14 mg/l

Location 1  
Total Cyanide: ND  
Dissolved Oxygen: 9.4 mg/l  
Nitrogen, Ammonia as N: ND

Location Near Entrance  
Total Cyanide: ND  
Dissolved Oxygen: 9.4 mg/l  
Nitrogen, Ammonia as N: ND

Location 160  
Total Cyanide: ND  
Dissolved Oxygen: 9.4 mg/l  
Nitrogen, Ammonia as N: ND

Location 8  
Total Cyanide: ND  
Dissolved Oxygen: 9.1 mg/l  
Nitrogen, Ammonia as N: 0.14 mg/l

Location 2 (011)  
Total Cyanide: 0.35 mg/l  
Dissolved Oxygen: 6.8 mg/l  
Nitrogen, Ammonia as N: 0.91 mg/l

Location 3 (001)  
Total Cyanide: 0.12 mg/l  
Dissolved Oxygen: 8.8 mg/l  
Nitrogen, Ammonia as N: 0.37 mg/l

Location 6  
Total Cyanide: 0.15 mg/l  
Dissolved Oxygen: 8.5 mg/l  
Nitrogen, Ammonia as N: 0.55 mg/l

Location 5  
Total Cyanide: 0.084 mg/l  
Dissolved Oxygen: 8.9 mg/l  
Nitrogen, Ammonia as N: 0.53 mg/l

Location 4  
Total Cyanide: ND  
Dissolved Oxygen: 8.9 mg/l  
Nitrogen, Ammonia as N: 0.21 mg/l

Location 7  
Total Cyanide: ND  
Dissolved Oxygen: 8.6 mg/l  
Nitrogen, Ammonia as N: 0.18 mg/l



**ArcelorMittal Burns Harbor Receiving  
Water Sampling Locations**  
8/19/2019



# ArcelorMittal Burns Harbor Receiving Water Sampling Locations

8/18/2019



# ArcelorMittal Burns Harbor Receiving Water Sampling Locations

8/17/2019





**ArcelorMittal Burns Harbor Receiving  
Water Sampling Locations**  
8/16/2019-revised

