



## Anatoxin-A ELISA Summary Report

Office of Water Quality - Watershed Assessment and Planning Branch

Sample #	Location	Date Collected	Date Analyzed	Conc. (ppb)
AB30000	Lost Bridge West SRA	8/1/2017	8/2/2017	< 0.40
AB30000LD	Lost Bridge (Lab Duplicate)	8/1/2017	8/2/2017	< 0.40
AB30001	Chain O' Lakes SP	8/1/2017	8/2/2017	1.160
AB30002	Potato Creek SP	8/1/2017	8/2/2017	< 0.40
AB30003	Mississinewa Lake Miami SRA	8/1/2017	8/2/2017	< 0.40
AB29998	Potato Creek (Field Duplicate)	8/1/2017	8/2/2017	< 0.40
AB29999	Field Blank	8/1/2017	8/2/2017	< 0.40
20170802LB	Lab Blank	8/1/2017	8/2/2017	< 0.40



# Assay Calibration Report

## Assay Information

Assay Name: Anatoxin a ELISA (2 rep) Units: ng/mL  
 Assay Mode: 4-Parameter Logistic # of decimals: 3  
 Normal: 0.150 - 5.000 Assay Description: ISA

## Controls:

Normal Control

## Standards:

Std1, Concentration = 0.000, Minimum number to use: 2  
 Std2, Concentration = 0.150, Minimum number to use: 2  
 Std3, Concentration = 0.400, Minimum number to use: 2  
 Std4, Concentration = 1.000, Minimum number to use: 2  
 Std5, Concentration = 2.500, Minimum number to use: 2  
 Std6, Concentration = 5.000, Minimum number to use: 2

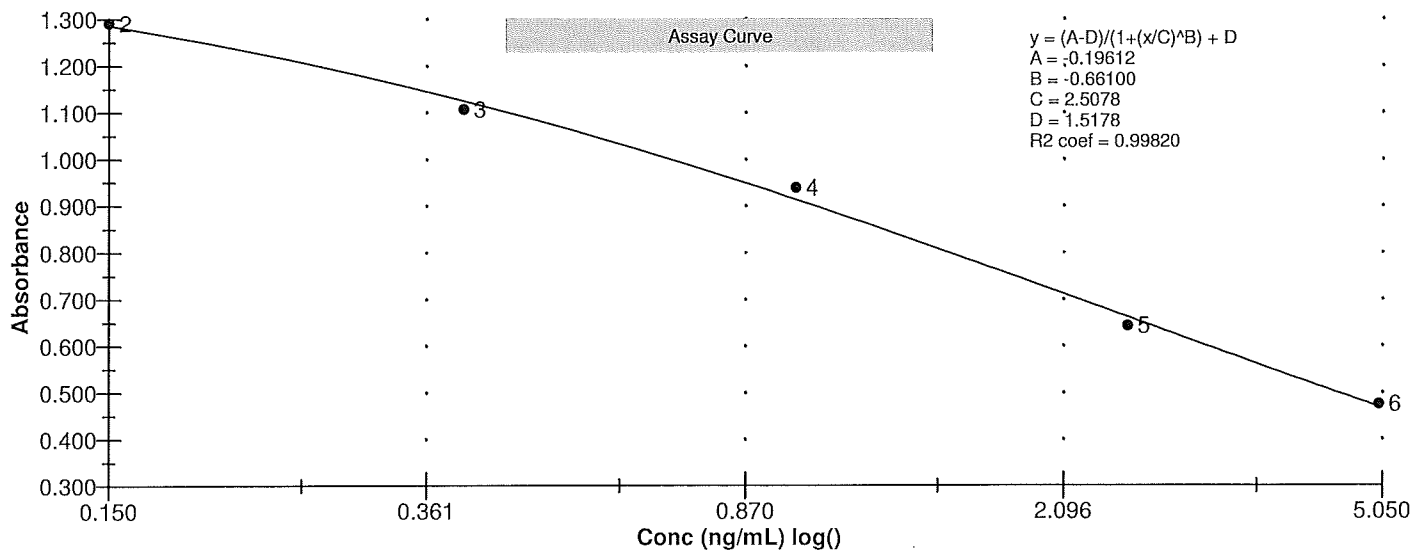
Curve valid interval: 7 days 0 hours

Axis Mode: Y = Abs, X = Log(Conc)

## Assay Calibration and Statistics

Name	Absorbance	Concentration	Position
8/2/2017 12:19:54 PM			
Std1	1.486 Abs	0.006 ng/mL	A01
Std1	1.550 Abs	< 0.000 ng/mL	B01
Std2	1.217 Abs	0.242 ng/mL	C01
Std2	1.366 Abs	0.074 ng/mL	D01
Std3	1.047 Abs	0.577 ng/mL	E01
Std3	1.166 Abs	0.324 ng/mL	F01
Std4	0.944 Abs	0.887 ng/mL	G01
Std4	0.934 Abs	0.923 ng/mL	H01
Std5	0.628 Abs	2.817 ng/mL	A02
Std5	0.658 Abs	2.533 ng/mL	B02
Std6	0.467 Abs	> 5.000 ng/mL	C02
Std6	0.482 Abs	4.760 ng/mL	D02
8/2/2017 12:19:54 PM			
Normal Control	1.038 Abs	0.600 ng/mL	F02
Normal Control	0.895 Abs	1.074 ng/mL	E02

Name	Mean Abs	SD Abs	CV Abs	Mean Conc	SD Conc	CV Conc	Diff Conc
Std1	1.518	0.045	2.98				
Std2	1.292	0.105	8.16	0.158	0.119	75.19	5.33
Std3	1.107	0.084	7.60	0.451	0.179	39.71	12.75
Std4	0.939	0.007	0.75	0.905	0.025	2.81	-9.50
Std5	0.643	0.021	3.30	2.675	0.201	7.51	7.00
Std6	0.475	0.011	2.24				-100.00
Normal Control	0.966	0.101	10.46	0.837	0.335	40.04	





## Test Report

### Test Information

Name/ID	Assay	Absorbance	Concentration	Interpretation	Reference	Position
8/2/2017 12:19:54 PM						
Std1	Anatoxin a ELISA (2 rep)	1.486 Abs	0.006 ng/mL		0.000	A01
Std1	Anatoxin a ELISA (2 rep)	1.550 Abs	< 0.000 ng/mL		0.000	B01
Std2	Anatoxin a ELISA (2 rep)	1.217 Abs	0.242 ng/mL		0.150	C01
Std2	Anatoxin a ELISA (2 rep)	1.366 Abs	0.074 ng/mL		0.150	D01
Std3	Anatoxin a ELISA (2 rep)	1.047 Abs	0.577 ng/mL		0.400	E01
Std3	Anatoxin a ELISA (2 rep)	1.166 Abs	0.324 ng/mL		0.400	F01
Std4	Anatoxin a ELISA (2 rep)	0.944 Abs	0.887 ng/mL		1.000	G01
Std4	Anatoxin a ELISA (2 rep)	0.934 Abs	0.923 ng/mL		1.000	H01
Std5	Anatoxin a ELISA (2 rep)	0.628 Abs	2.817 ng/mL		2.500	A02
Std5	Anatoxin a ELISA (2 rep)	0.658 Abs	2.533 ng/mL		2.500	B02
Std6	Anatoxin a ELISA (2 rep)	0.467 Abs	> 5.000 ng/mL		5.000	C02
Std6	Anatoxin a ELISA (2 rep)	0.482 Abs	4.760 ng/mL		5.000	D02
Normal Control	Anatoxin a ELISA (2 rep)	0.895 Abs	1.074 ng/mL			E02
Normal Control	Anatoxin a ELISA (2 rep)	1.038 Abs	0.600 ng/mL			F02
AB30000	Anatoxin a ELISA (2 rep)	1.314 Abs	0.133 ng/mL	LOW	0.150 - 5.000	G02
AB30000	Anatoxin a ELISA (2 rep)	1.326 Abs [1.3200] {0.6 CV}	0.120 ng/mL [0.126] {7.3 CV}	Low [Low]	0.150 - 5.000	H02
AB30000LD	Anatoxin a ELISA (2 rep)	1.360 Abs	0.087 ng/mL	LOW	0.150 - 5.000	A03
AB30000LD	Anatoxin a ELISA (2 rep)	1.337 Abs [1.3485] {1.2 CV}	0.109 ng/mL [0.098] {15.9 CV}	Low [Low]	0.150 - 5.000	B03
AB30001	Anatoxin a ELISA (2 rep)	0.896 Abs	1.176 ng/mL		0.150 - 5.000	C03
AB30001	Anatoxin a ELISA (2 rep)	0.903 Abs [0.8995] {0.6 CV}	1.145 ng/mL [1.160] {1.9 CV}		0.150 - 5.000	D03
AB30002	Anatoxin a ELISA (2 rep)	1.319 Abs	0.128 ng/mL	LOW	0.150 - 5.000	E03
AB30002	Anatoxin a ELISA (2 rep)	1.295 Abs [1.3070] {1.3 CV}	0.155 ng/mL [0.141] {13.5 CV}	[Low]	0.150 - 5.000	F03
AB30003	Anatoxin a ELISA (2 rep)	1.410 Abs	0.046 ng/mL	LOW	0.150 - 5.000	G03
AB30003	Anatoxin a ELISA (2 rep)	1.513 Abs [1.4615] {5.0 CV}	0.000 ng/mL [0.016] {141.4 CV}	Low [Low]	0.150 - 5.000	H03
AB29998	Anatoxin a ELISA (2 rep)	1.266 Abs	0.192 ng/mL		0.150 - 5.000	A04
AB29998	Anatoxin a ELISA (2 rep)	1.244 Abs [1.2550] {1.2 CV}	0.224 ng/mL [0.208] {10.9 CV}		0.150 - 5.000	B04
AB29999	Anatoxin a ELISA (2 rep)	1.250 Abs	0.216 ng/mL		0.150 - 5.000	C04
AB29999	Anatoxin a ELISA (2 rep)	1.285 Abs [1.2675] {2.0 CV}	0.168 ng/mL [0.190] {17.7 CV}		0.150 - 5.000	D04
AB30004	Anatoxin a ELISA (2 rep)	1.309 Abs	0.139 ng/mL	LOW	0.150 - 5.000	E04
AB30004	Anatoxin a ELISA (2 rep)	1.212 Abs [1.2605] {5.4 CV}	0.274 ng/mL [0.200] {46.2 CV}		0.150 - 5.000	F04
20170802LB	Anatoxin a ELISA (2 rep)	1.301 Abs	0.149 ng/mL	LOW	0.150 - 5.000	G04
20170802LB	Anatoxin a ELISA (2 rep)	1.223 Abs [1.2620] {4.4 CV}	0.256 ng/mL [0.198] {37.4 CV}		0.150 - 5.000	H04

The data in this report is preliminary without a quality control report. This data is not warranted for accuracy or other purposes.

*David Jordan*

Laboratory Analyst Signature

*8/2/2017*

Date