

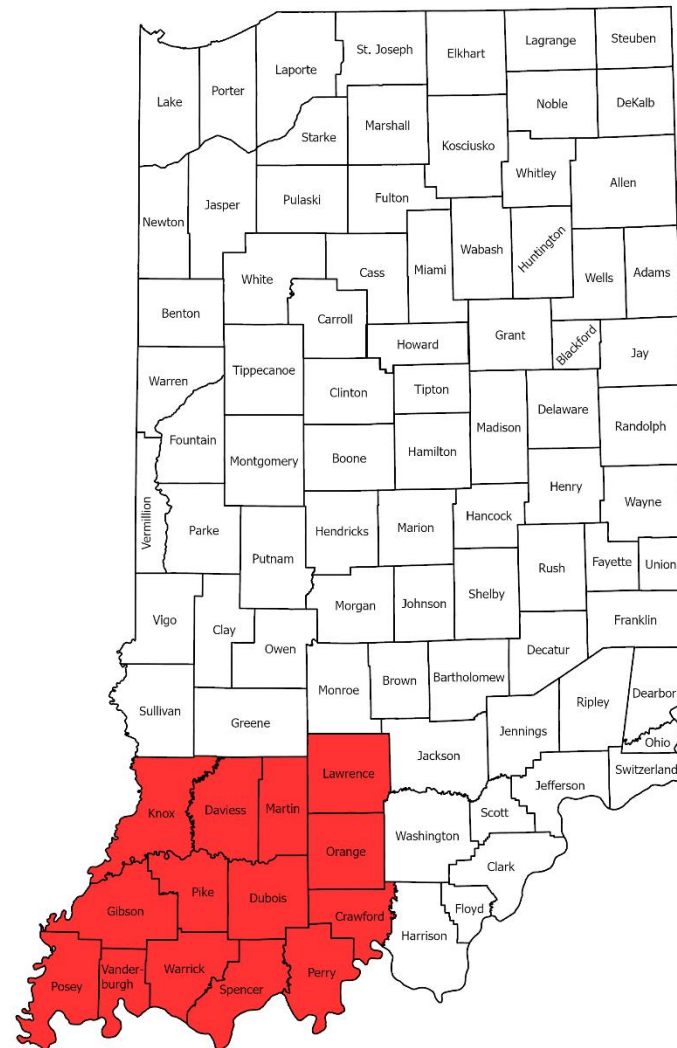
Status of Indiana Air Quality 30-Year Trend Charts Southwest Region 1993-2022



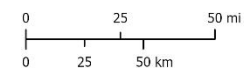
Indiana Department of Environmental Management (IDEM)
Office of Air Quality

August 2023

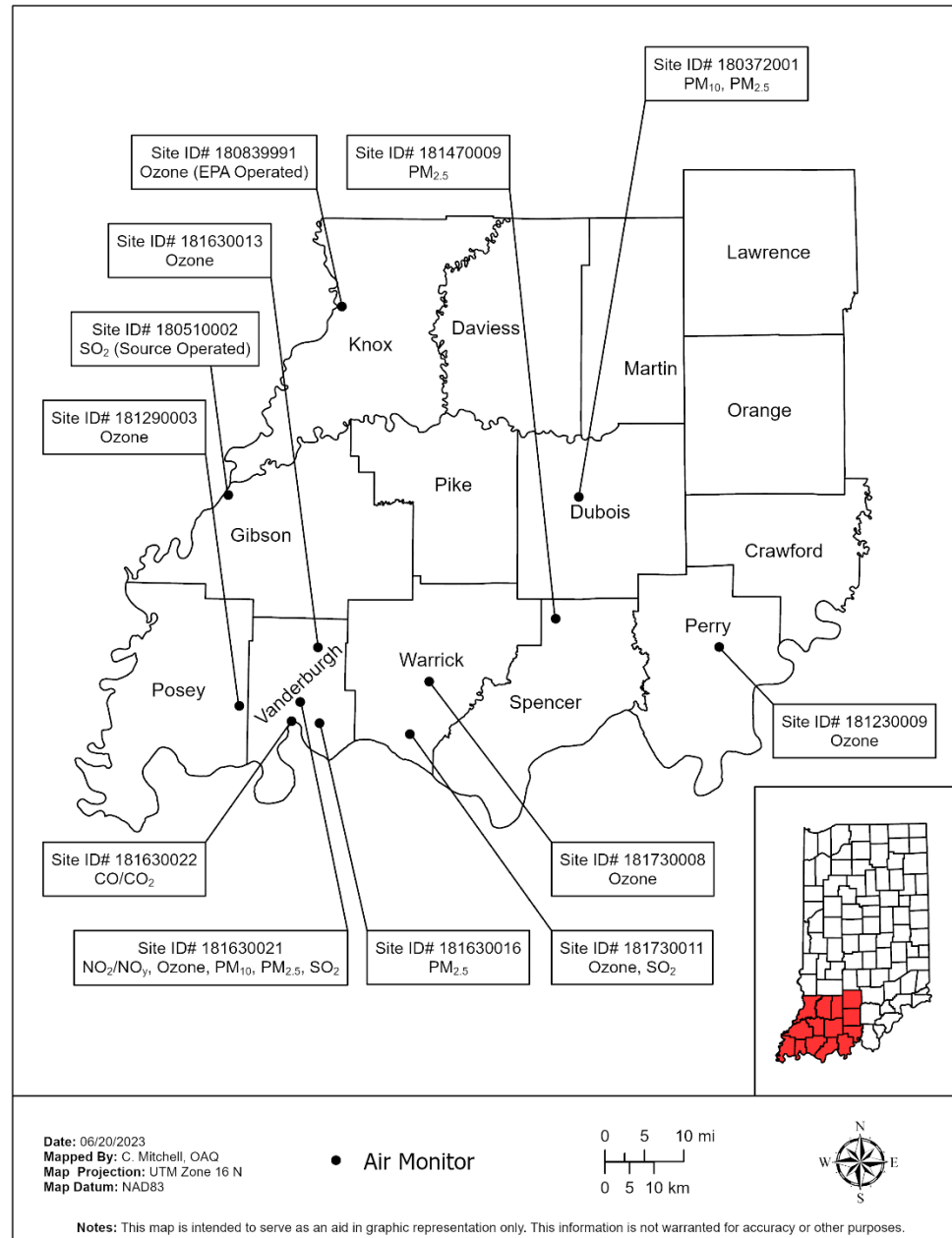
Southwest Region



Date: 06/01/2023
Mapped By: C. Mitchell, OAQ
Map Projection: UTM Zone 16 N
Map Datum: NAD83

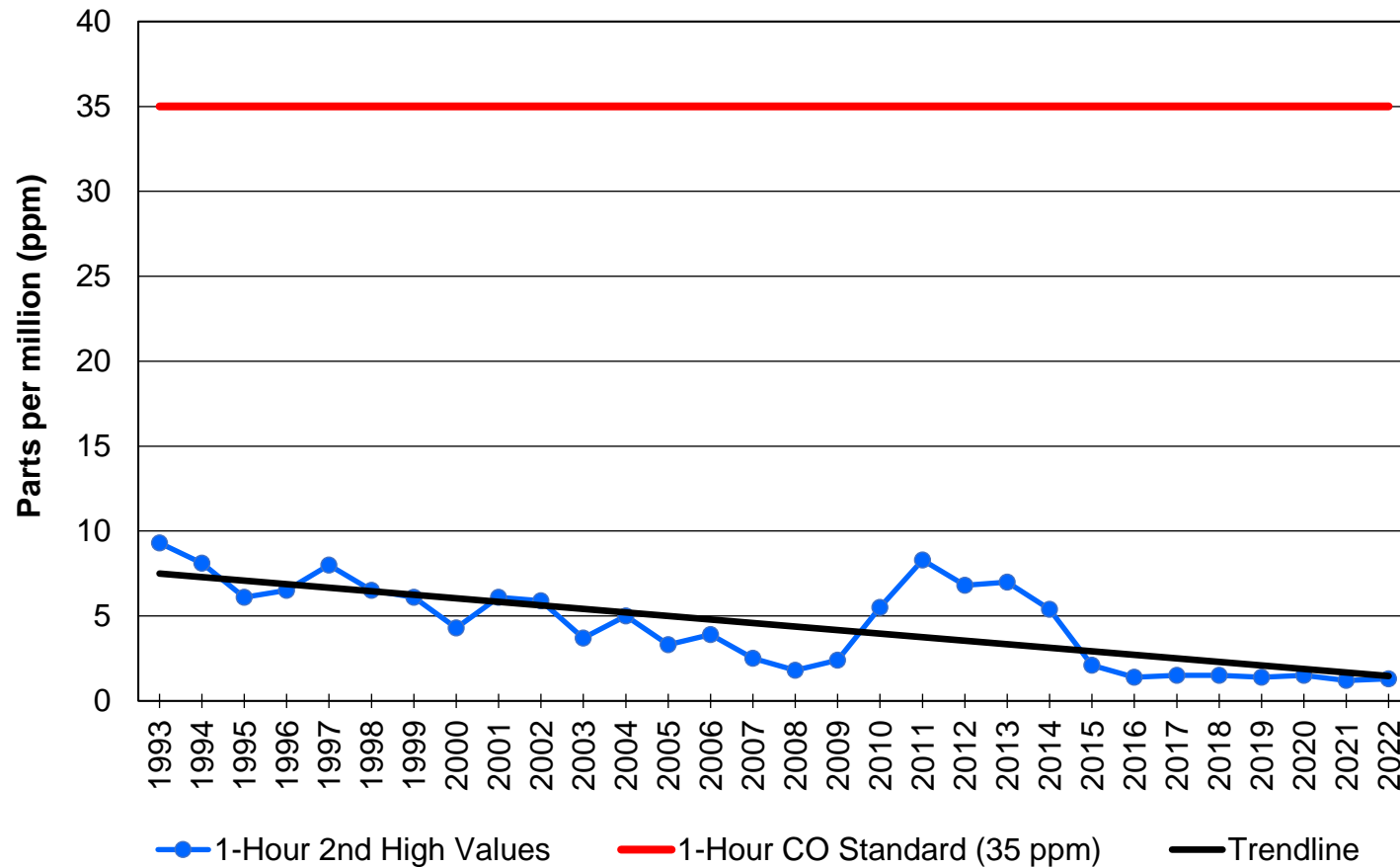


Southwest Region Monitors Operating In 2022



Carbon Monoxide

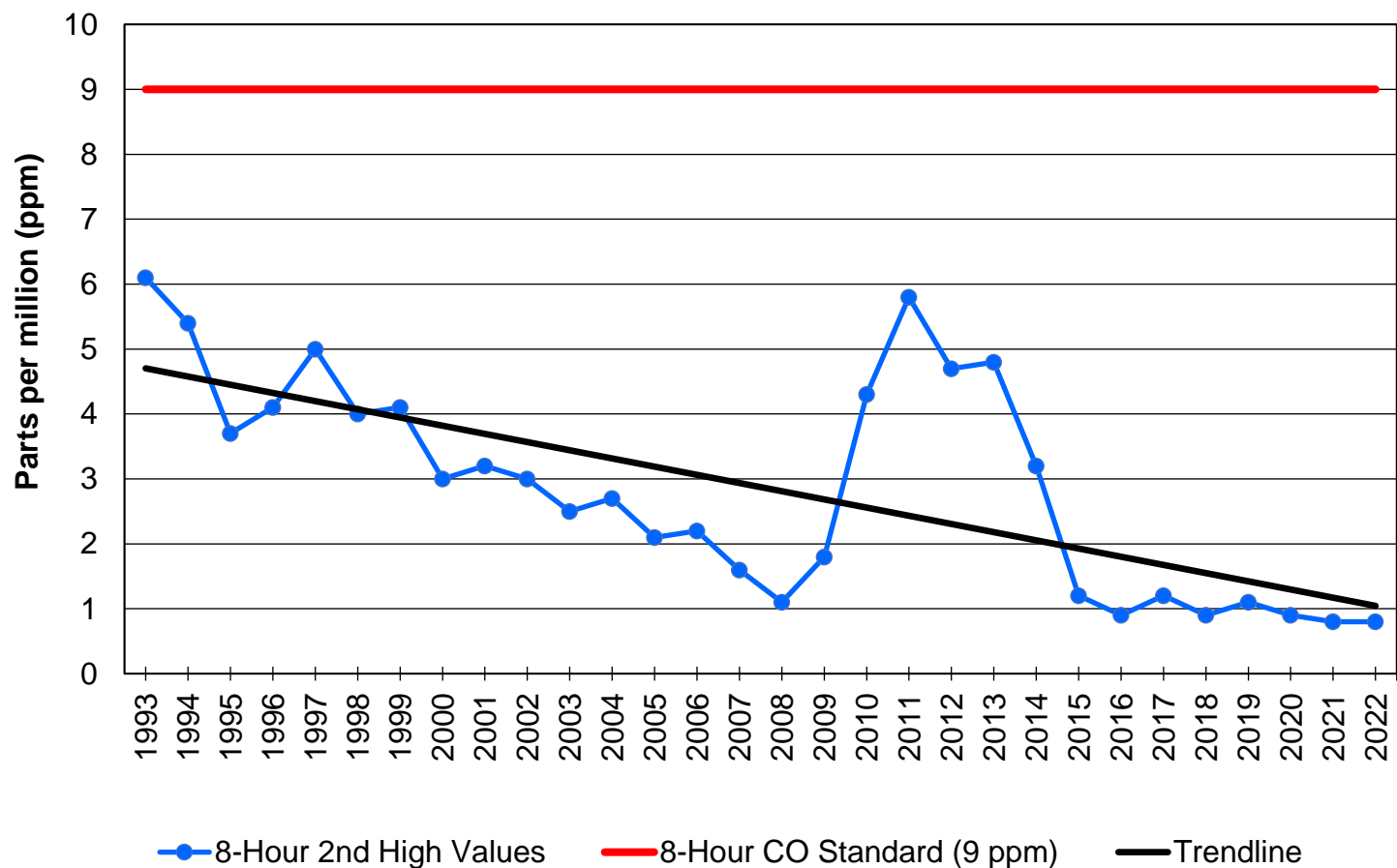
1-Hour CO 2nd High Values Southwest Region



In 1971, United States Environmental Protection Agency (U.S. EPA) established a 1-hour carbon monoxide (CO) standard ([36 FR 8186](#)). The standard was set at 35 parts per million (ppm) not to be exceeded more than once per year, therefore 2nd high values are compared to the standard.

Carbon Monoxide

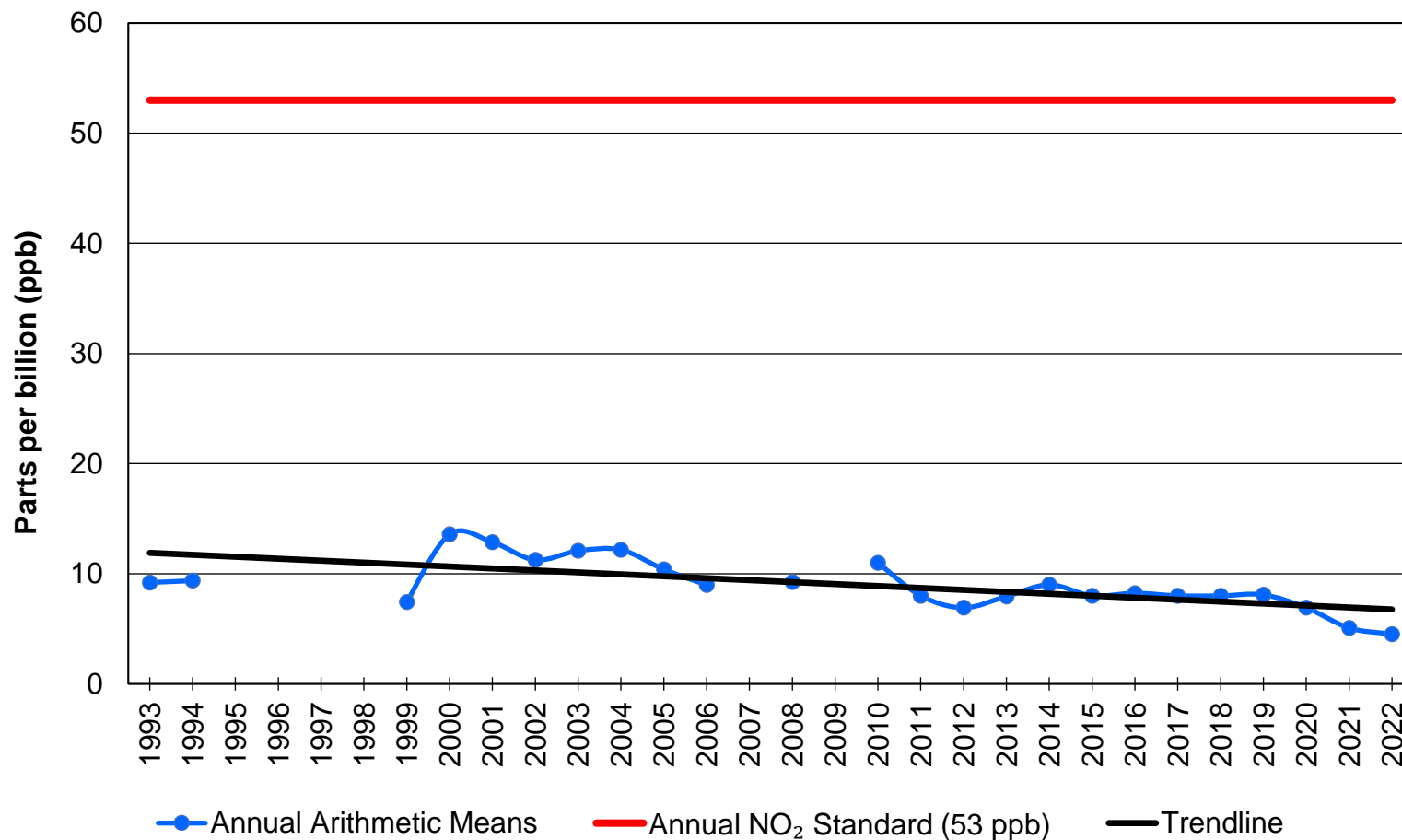
8-Hour CO 2nd High Values Southwest Region



In 1971, United States Environmental Protection Agency (U.S. EPA) established a 8-hour carbon monoxide (CO) standard ([36 FR 8186](#)). The standard was set at 9 parts per million (ppm) not to be exceeded more than once per year.

Nitrogen Dioxide

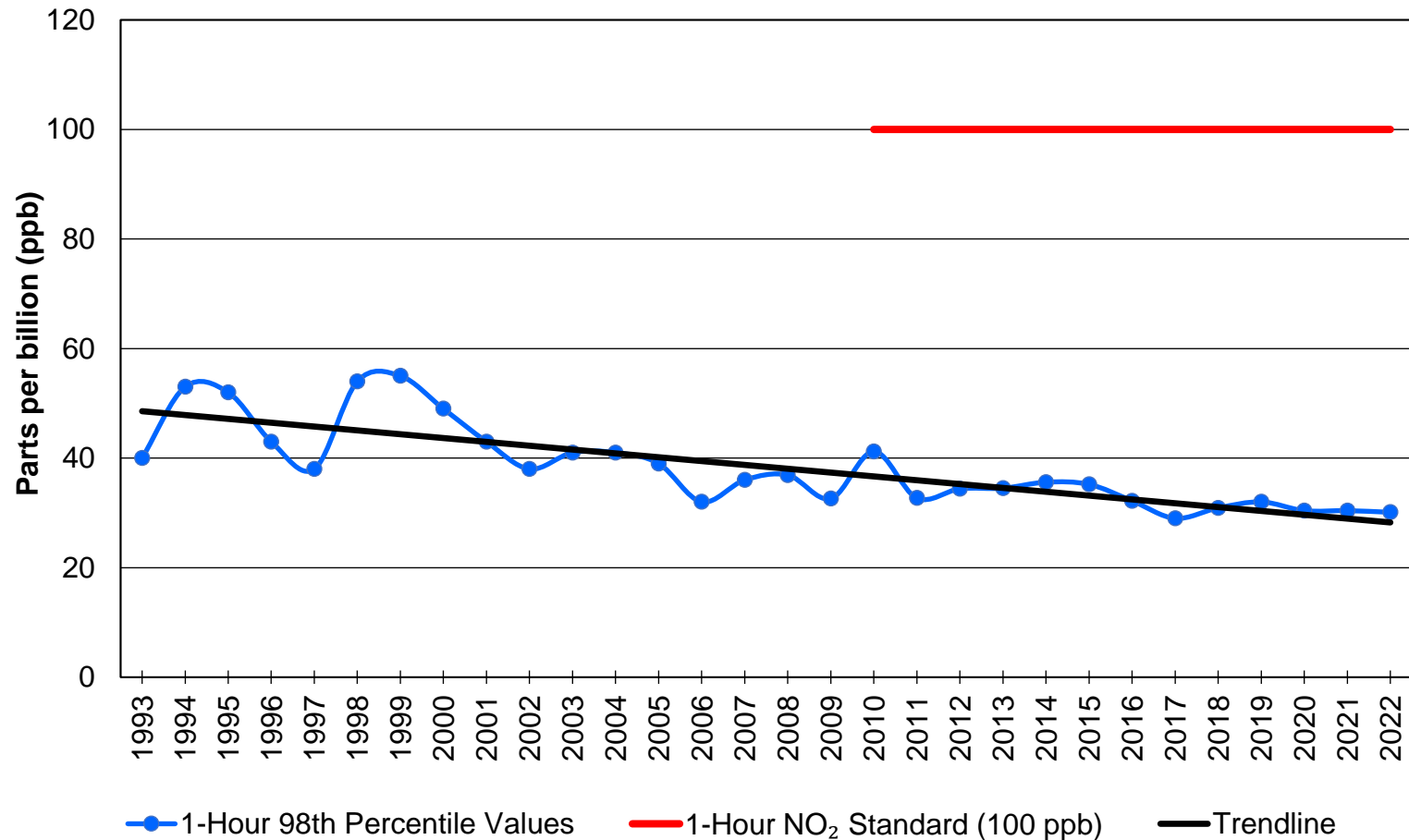
Annual Arithmetic Mean NO₂ Values Southwest Region



In 1971, United States Environmental Protection Agency (U.S.EPA) established an annual nitrogen dioxide (NO₂) standard ([36 FR 8186](#)). The standard was set at 53 parts per billion (ppb), which cannot be exceeded.

Nitrogen Dioxide

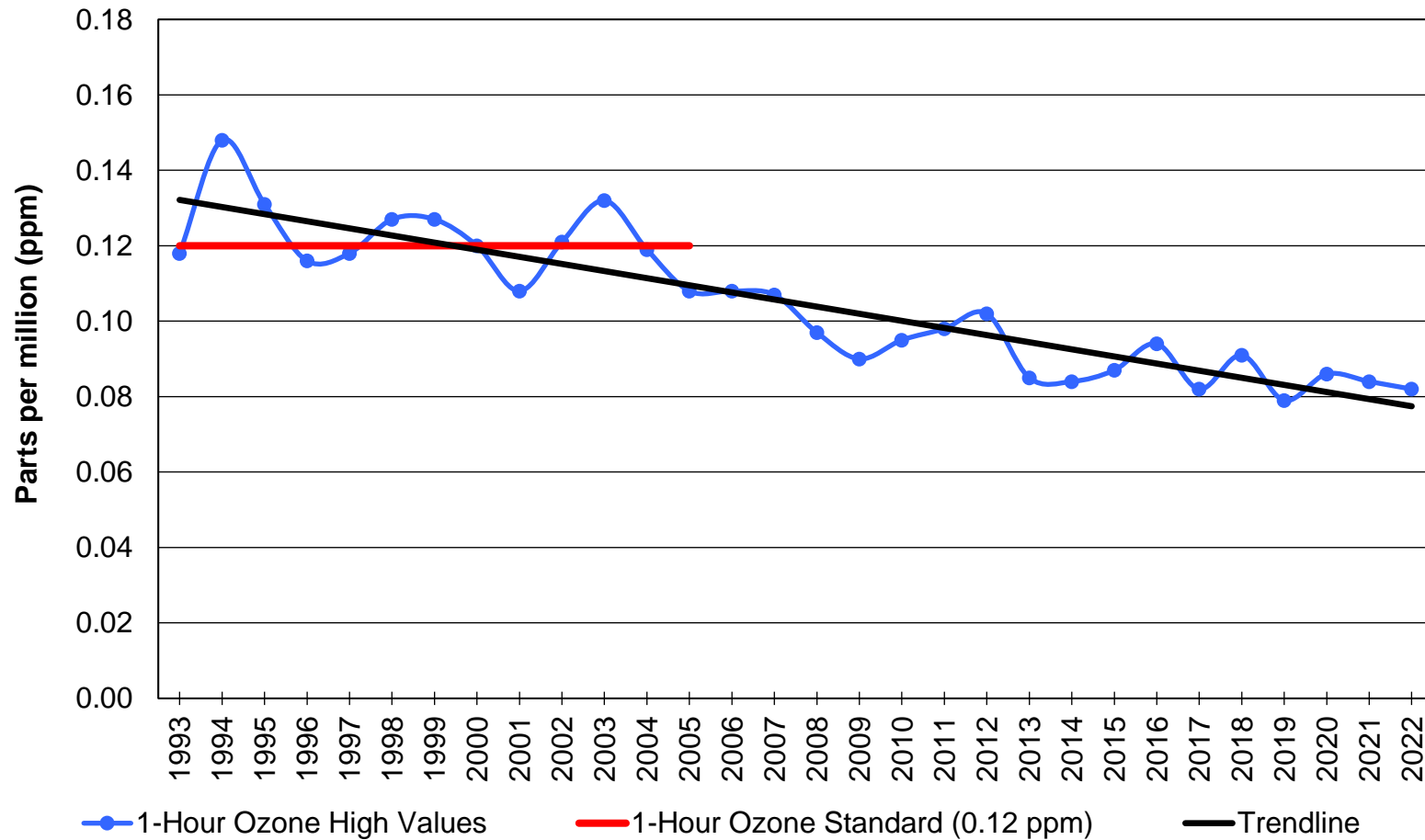
1-Hour NO₂ 98th Percentile Values Southwest Region



In 2010, United States Environmental Protection Agency (U.S. EPA) established a 1-hour nitrogen dioxide (NO₂) standard ([75 FR 6474](#)). The standard was set at 100 parts per billion (ppb) with the 98th percentile of daily maximum concentrations averaged over a 3-year period not to be exceeded.

Ozone

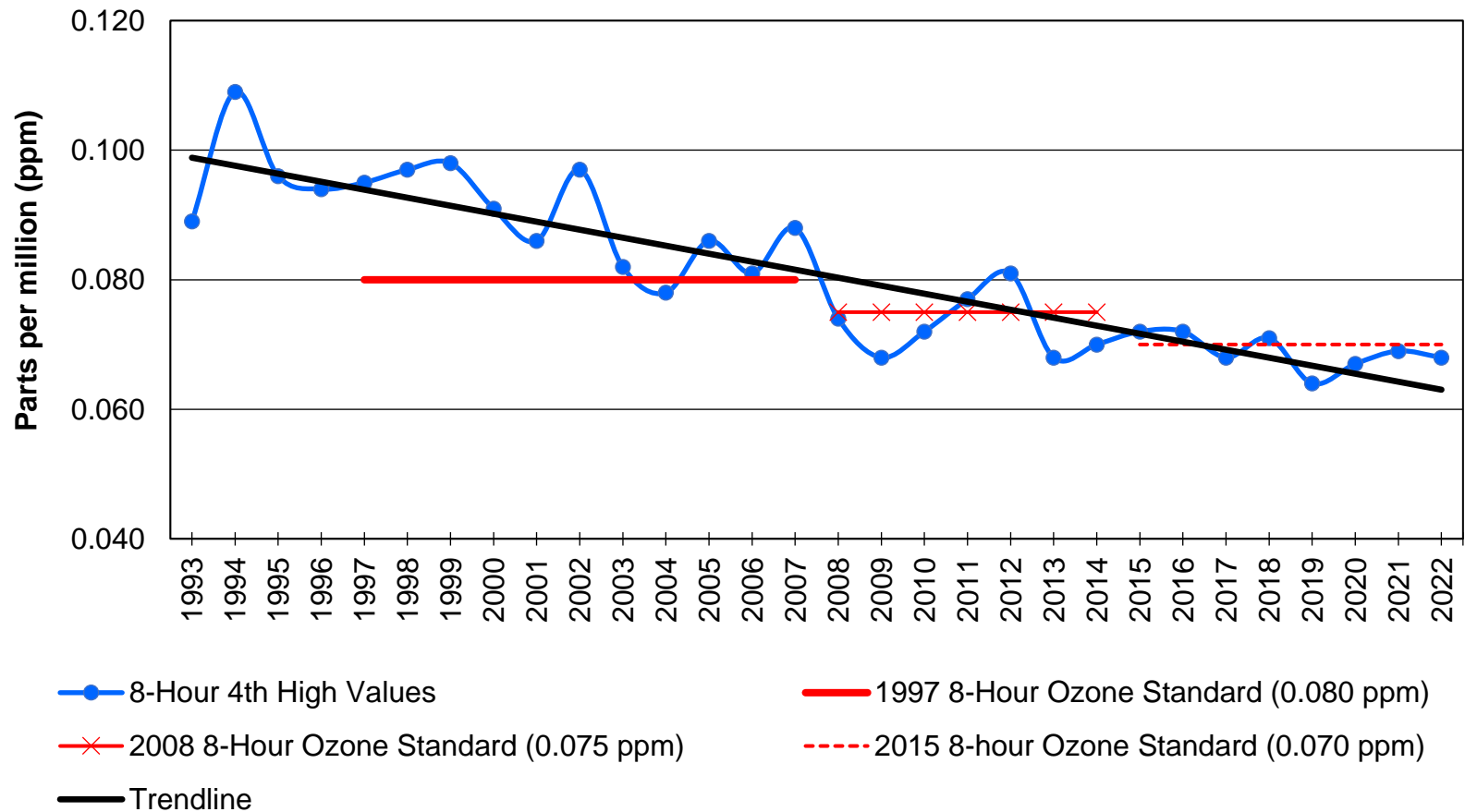
1-Hour Ozone High Values Southwest Region



In 1979, United States Environmental Protection Agency (U.S. EPA) established a 1-hour ozone standard ([44 FR 8202](#)). The standard was set at 0.12 parts per million (ppm) not to be exceeded more than once per year on average over three years. In 2005, U.S. EPA revoked the 1-hour standard, however IDEM continues to monitor for the standard.

Ozone

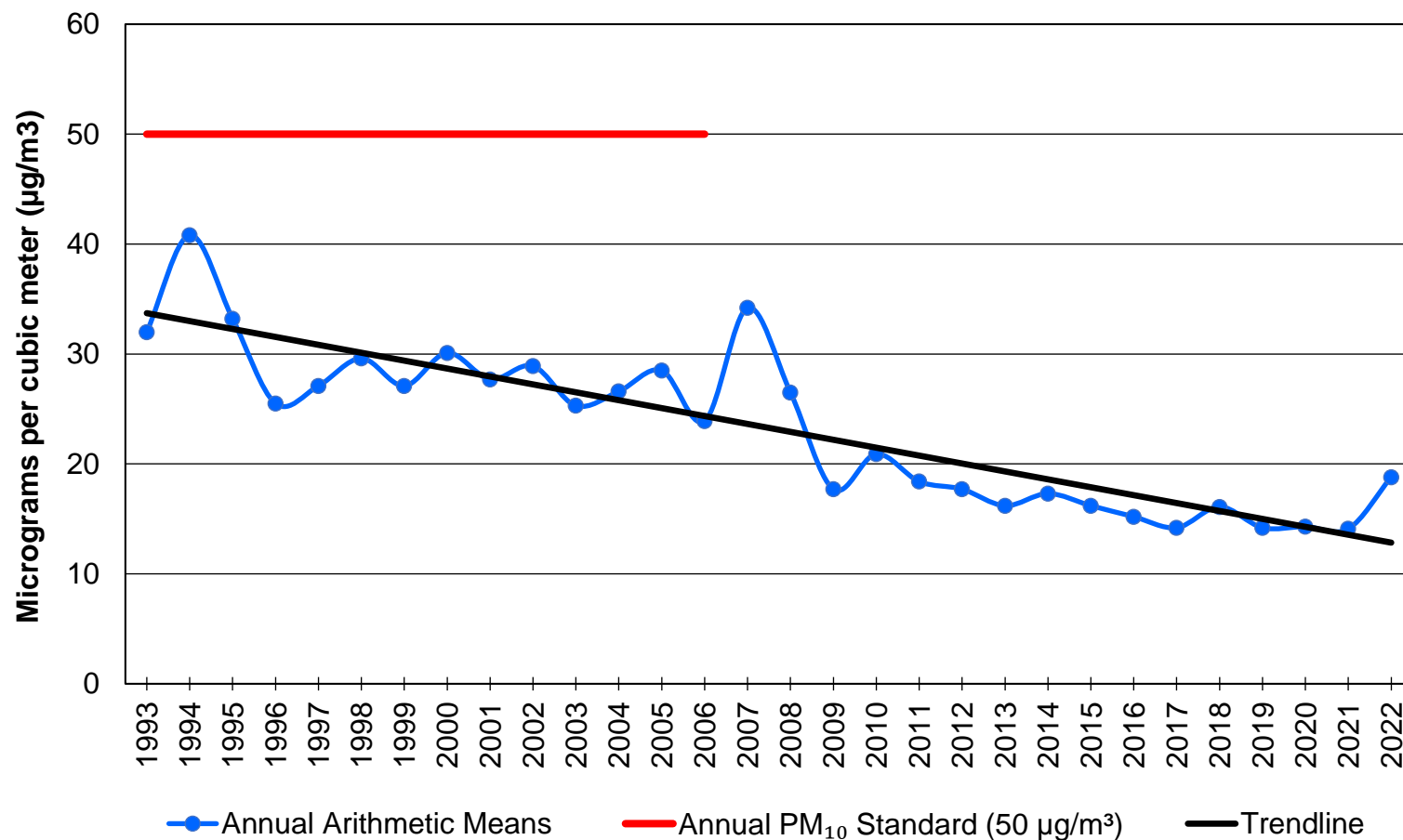
8-Hour Ozone 4th High Values Southwest Region



In 1997, United States Environmental Protection Agency (U.S. EPA) established an 8-hour ozone standard ([62 FR 38856](#)). The standard was set at 0.080 parts per million (ppm) not to be exceeded. In 2007, U.S. EPA lowered the 8-hour standard to 0.075 ppm not to be exceeded ([73 FR 16436](#)) and in 2015 further strengthened the standard to 0.070 ppm ([80 FR 65292](#)). Compliance is determined by evaluating the fourth highest daily maximum concentration averaged over a 3-year period.

Particulate Matter

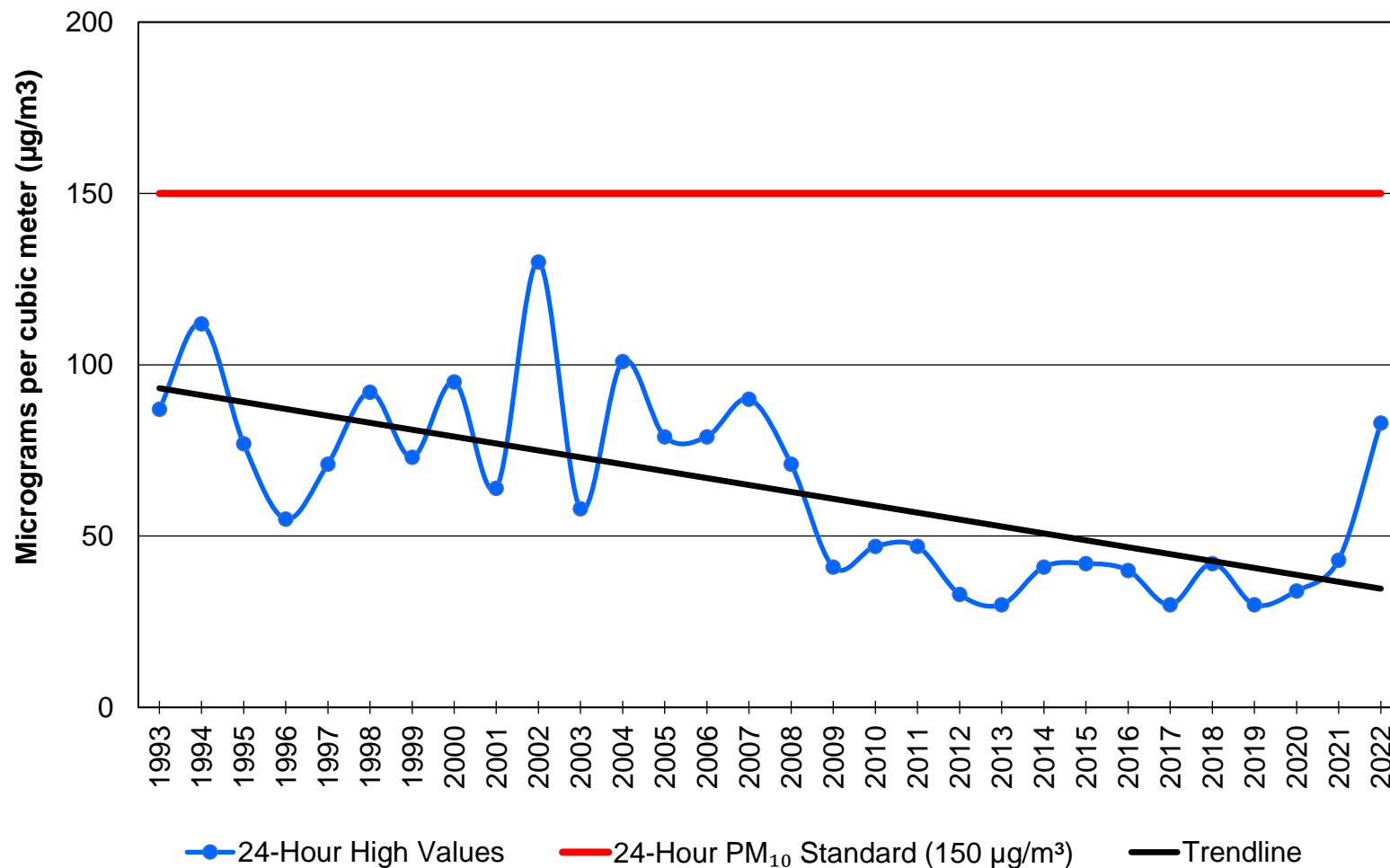
Annual Arithmetic Mean PM₁₀ Values Southwest Region



In 1987, United States Environmental Protection Agency (U.S. EPA) established an annual coarse particles (PM₁₀) standard ([52 FR 24634](#)). The standard was set at 50 micrograms per cubic meter (µg/m³) with the annual arithmetic mean averaged over a 3-year period not to be exceeded. In 2006, U.S. EPA revoked the annual standard, however IDEM continues to monitor for the annual standard in certain regions.

Particulate Matter

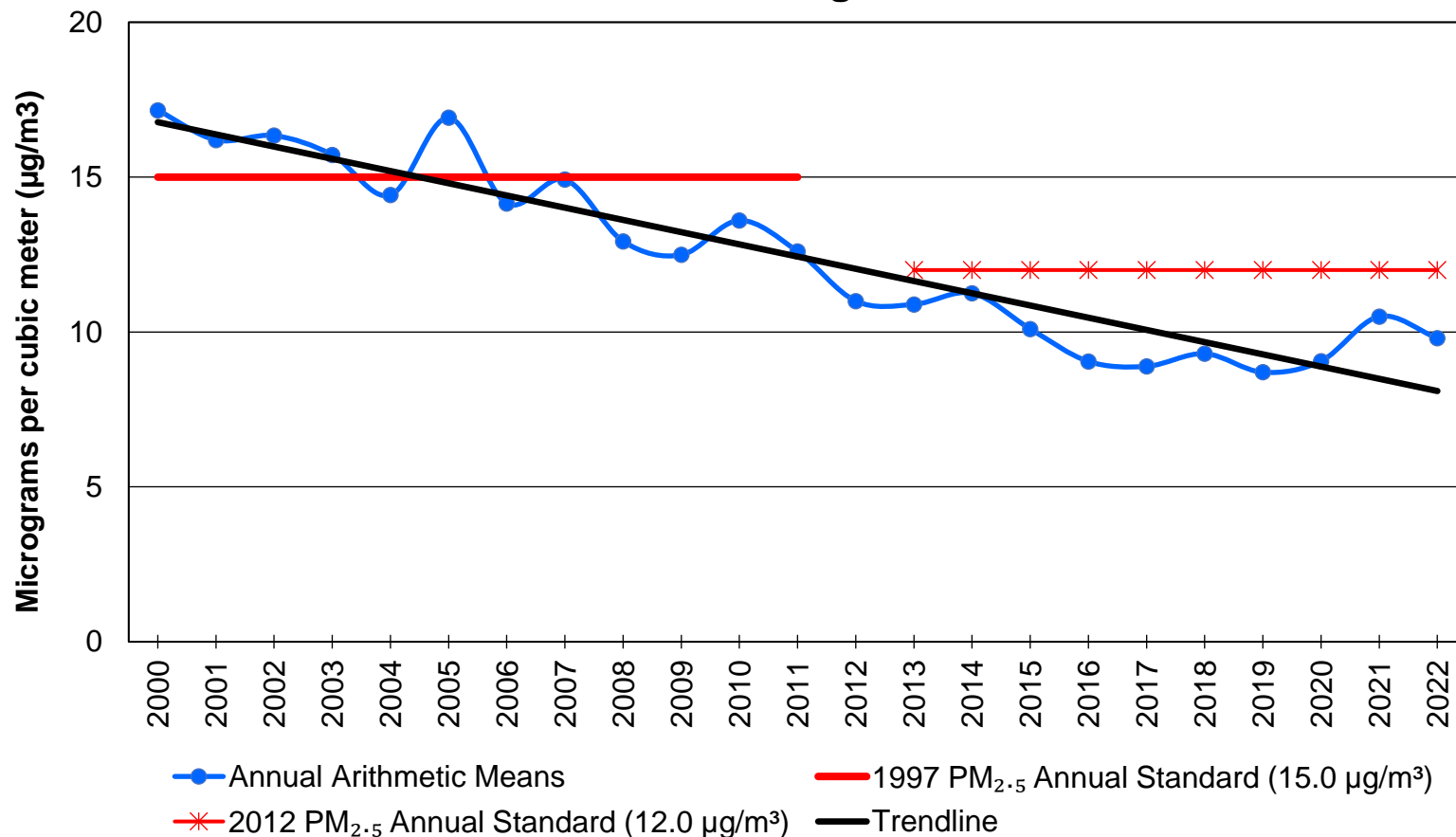
24-Hour PM₁₀ High Values Southwest Region



In 1987, United States Environmental Protection Agency (U.S. EPA) established a 24-hour coarse particles (PM₁₀) standard ([52 FR 24634](#)). The standard was set at 150 micrograms per cubic meter (µg/m³) not to be exceeded more than once per year on average over three years.

Particulate Matter

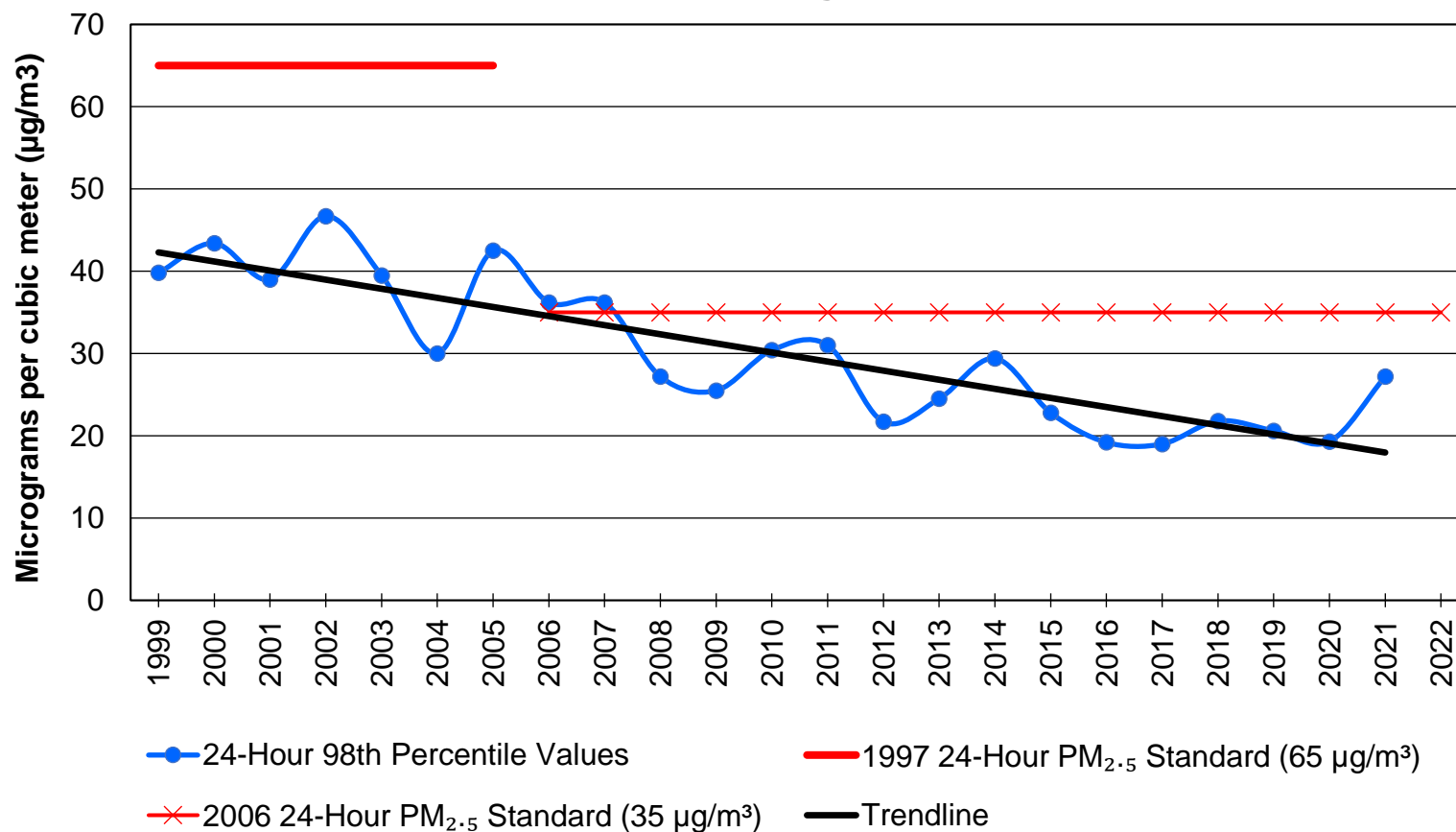
Annual Arithmetic Mean PM_{2.5} Values Southwest Region



In 1997, United States Environmental Protection Agency (U.S. EPA) established an annual fine particles (PM_{2.5}) standard at 15 micrograms per cubic meter (µg/m³) ([62 FR 38652](#)). In 2013, U.S. EPA lowered the standard to 12 µg/m³ ([78 FR 3085](#)). Compliance is determined by evaluating the annual arithmetic mean averaged over a 3-year period not to be exceeded.

Particulate Matter

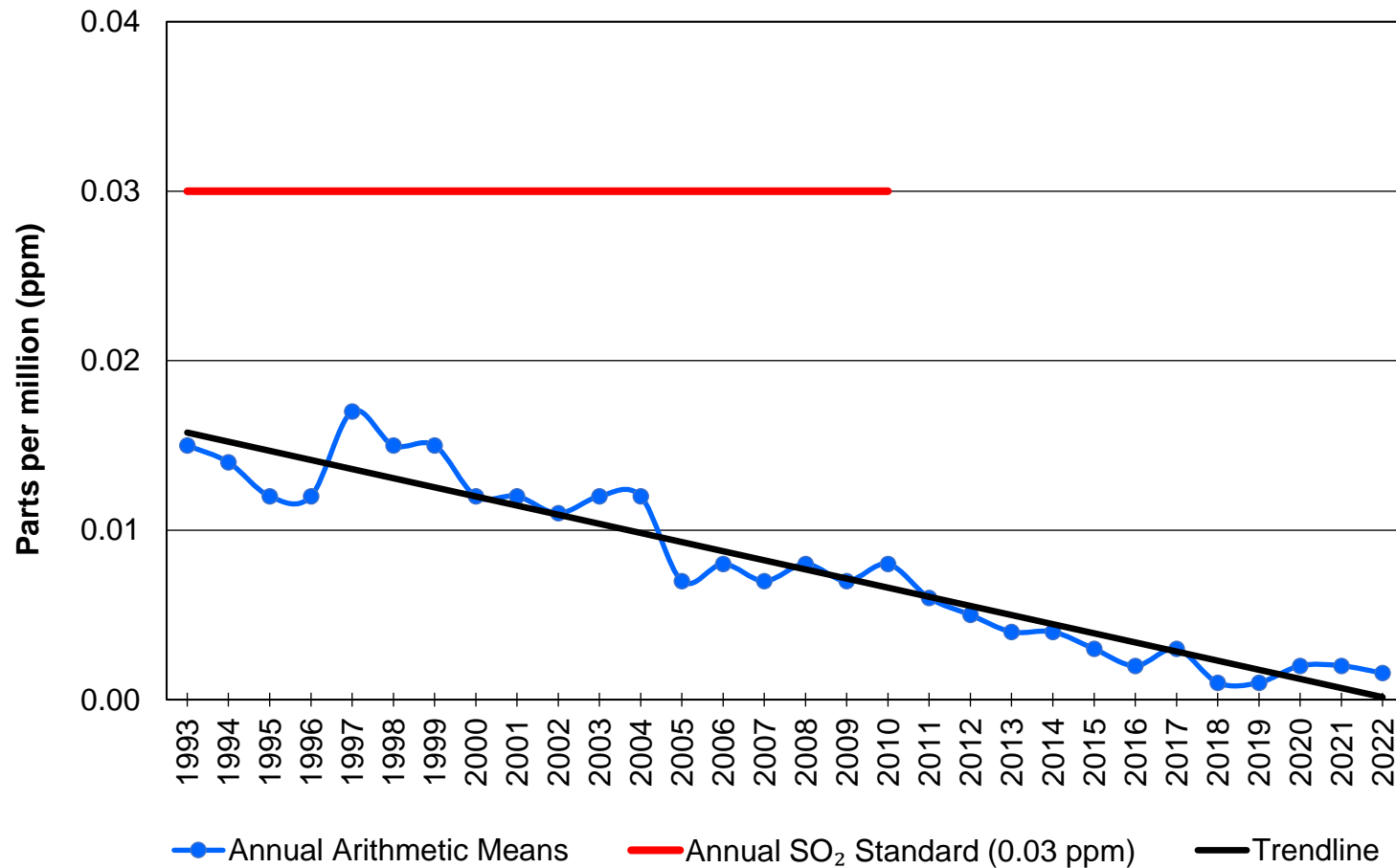
24-Hour PM_{2.5} 98th Percentile Values Southwest Region



In 1997, United States Environmental Protection Agency (U.S. EPA) established a 24-hour fine particles (PM_{2.5}) standard of 65 micrograms per cubic meter (µg/m³) ([62 FR 38652](#)). In 2006, U.S. EPA lowered the standard to 35 µg/m³ ([71 FR 61144](#)). Compliance is determined by evaluating the 98th percentile averaged over a 3-year period not to be exceeded.

Sulfur Dioxide

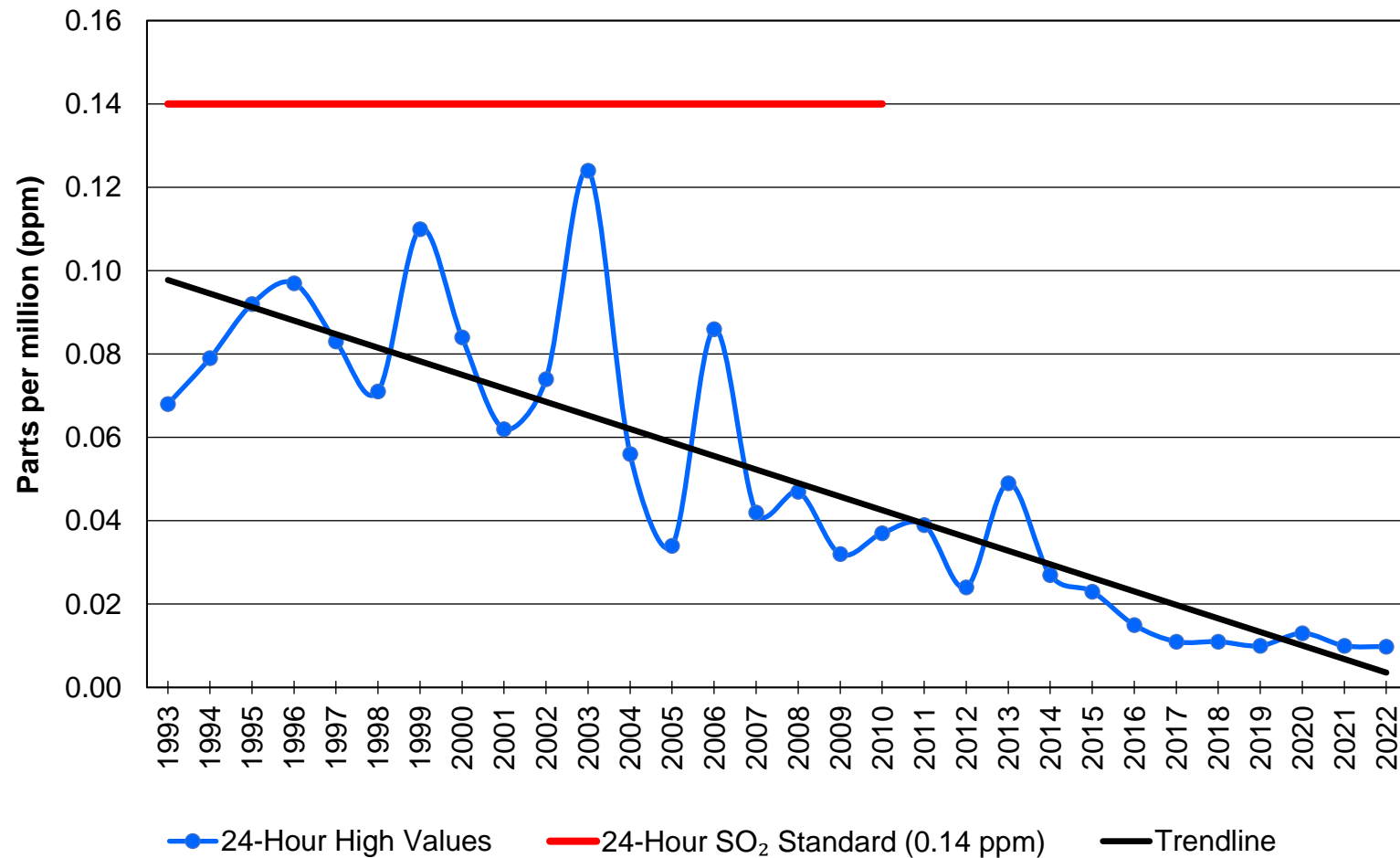
Annual Arithmetic Mean SO₂ Values Southwest Region



In 1971, United States Environmental Protection Agency (U.S. EPA) established an annual sulfur dioxide (SO₂) standard ([36 FR 8186](#)). The standard was set at 0.03 parts per million (ppm) and was not to be exceeded. In 2010, U.S. EPA revoked the standard, however IDEM continues to monitor for the annual standard in certain regions.

Sulfur Dioxide

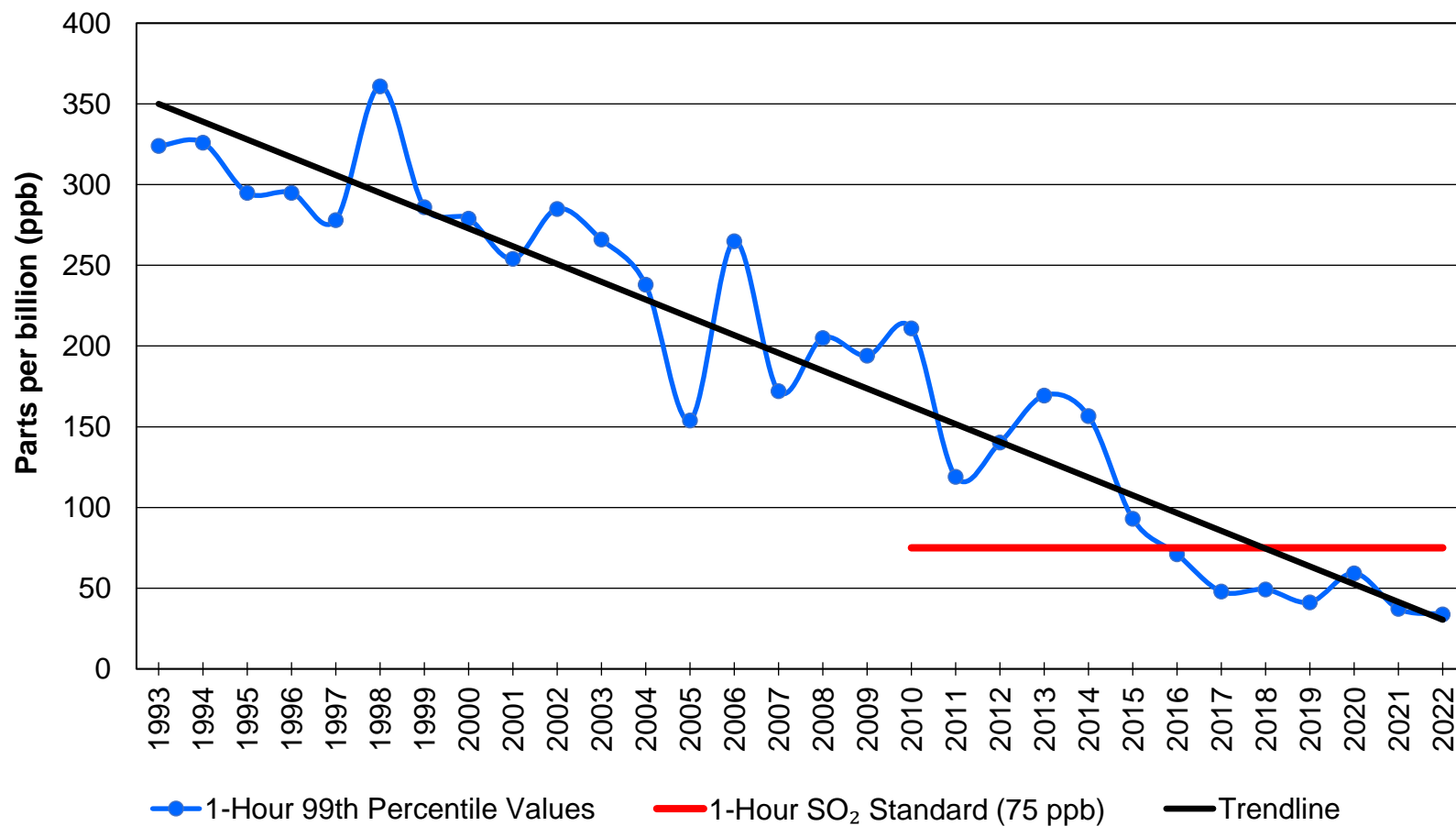
24-Hour SO₂ 2nd High Values Southwest Region



In 1971, United States Environmental Protection Agency (U.S. EPA) established a 24-hour sulfur dioxide (SO₂) standard ([36 FR 8186](#)). The standard was set at 0.14 parts per million (ppm) and was not to be exceeded more than once per year, therefore 2nd-high values are compared to the standard. In 2010, U.S. EPA revoked the standard, however IDEM continues to monitor for the 24-hour standard in certain regions.

Sulfur Dioxide

Highest 1-Hour SO₂ 99th Percentile Values Southwest Region



In 2010, United States Environmental Protection Agency (U.S. EPA) established a 1-hour sulfur dioxide (SO₂) standard ([75 FR 35520](#)). The standard was set at 75 parts per billion (ppb) with the 99th percentile of 1-hour daily maximum concentrations averaged over a 3-year period not to be exceeded.

Air Quality and You

- To learn more about your air quality and what you can do to help, visit:

Indiana's Smogwatch Air Quality:

[Current Conditions \(in.gov\)](#)

- To acquire additional information about air quality in Indiana and IDEM's role, visit:

www.idem.IN.gov/airquality

Contact Information for IDEM's Office of Air Quality

- To call, please dial:

(317) 233-0178

- To write, please use this mailing address:

**IDEM, Office of Air Quality
100 North Senate Avenue, IGCN 1003
Indianapolis, IN 46204-2251**