

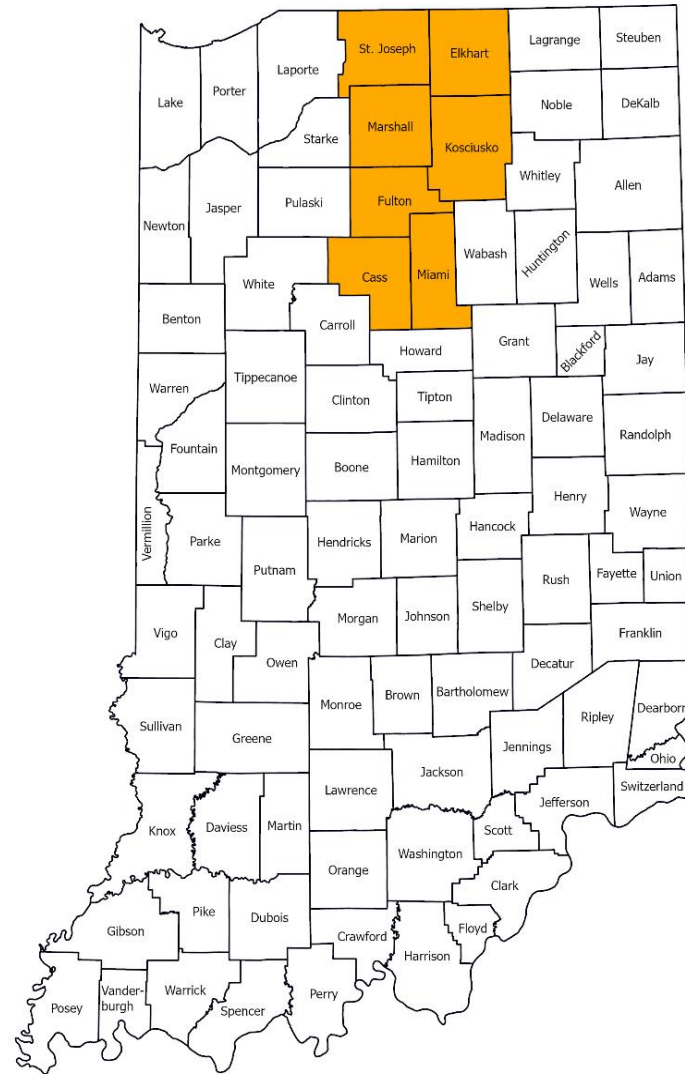
Status of Indiana Air Quality 30-Year Trend Charts North Central Indiana 1992-2021



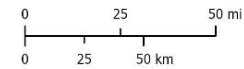
Indiana Department of Environmental Management (IDEM)
Office of Air Quality

October 2022

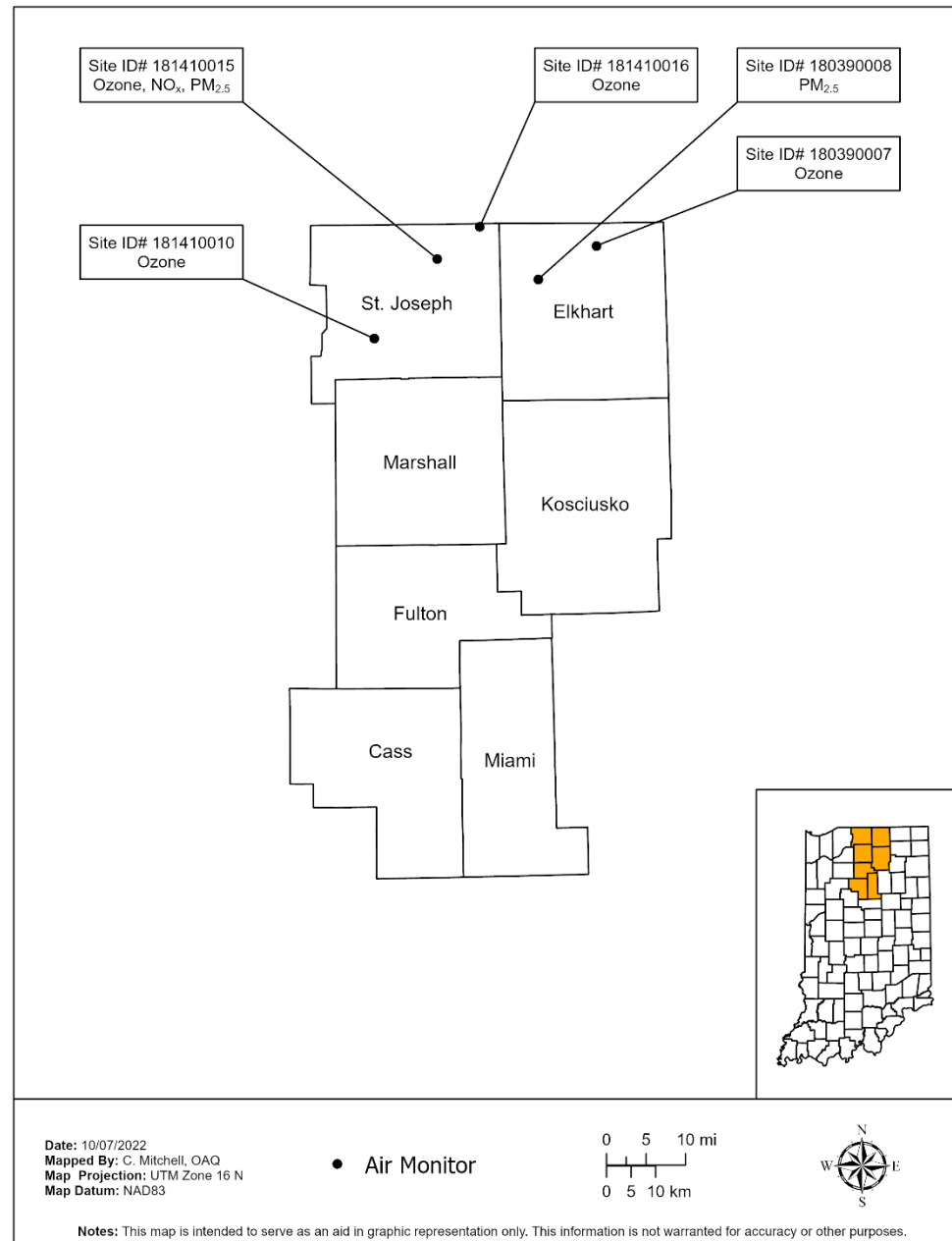
North Central Indiana Region



Date: 06/30/2022
Mapped By: A. Smith, OAG
Map Projection: UTM Zone 16 N
Map Datum: NAD83

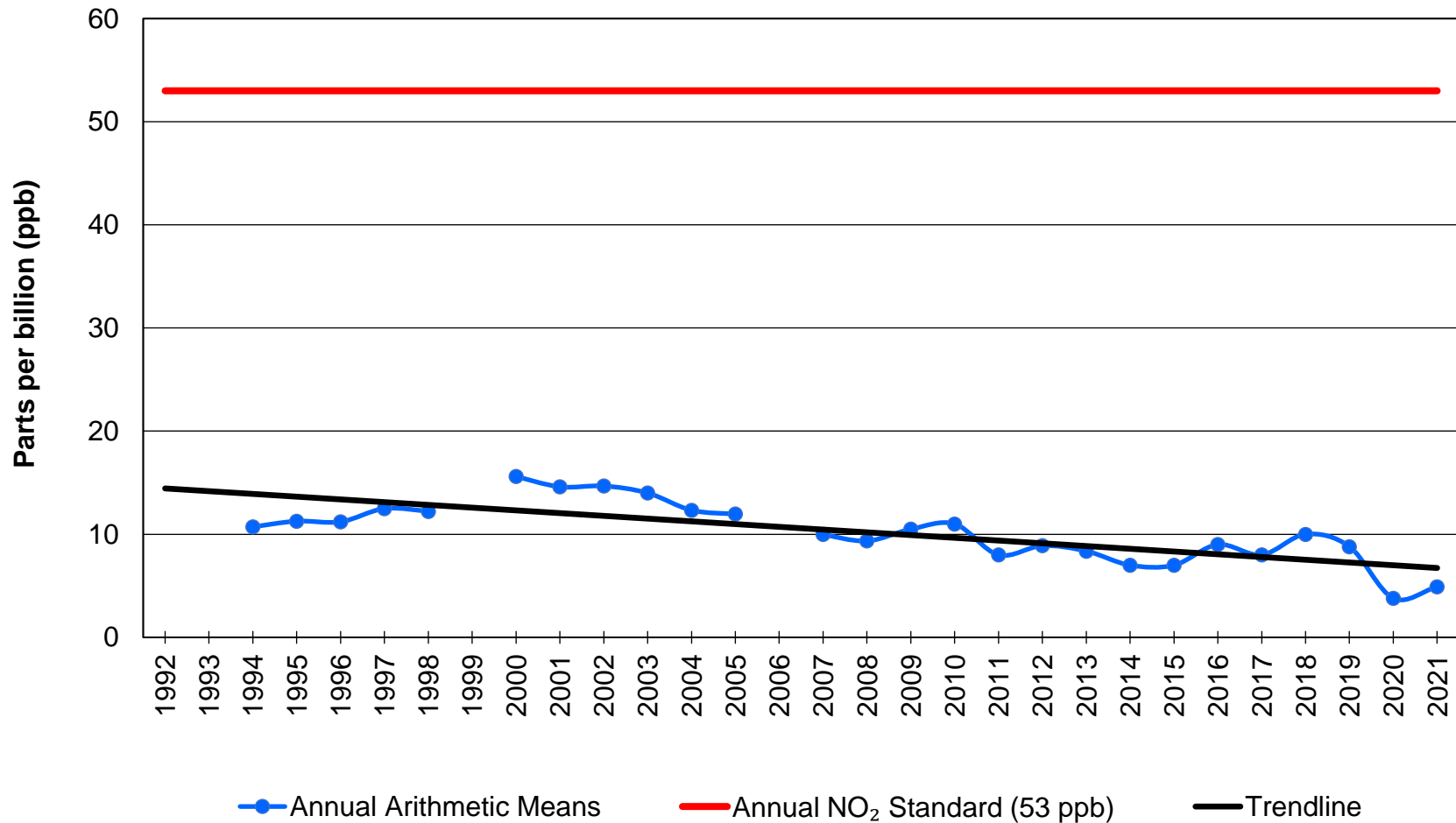


North Central Indiana Monitors Operating In 2021



Nitrogen Dioxide

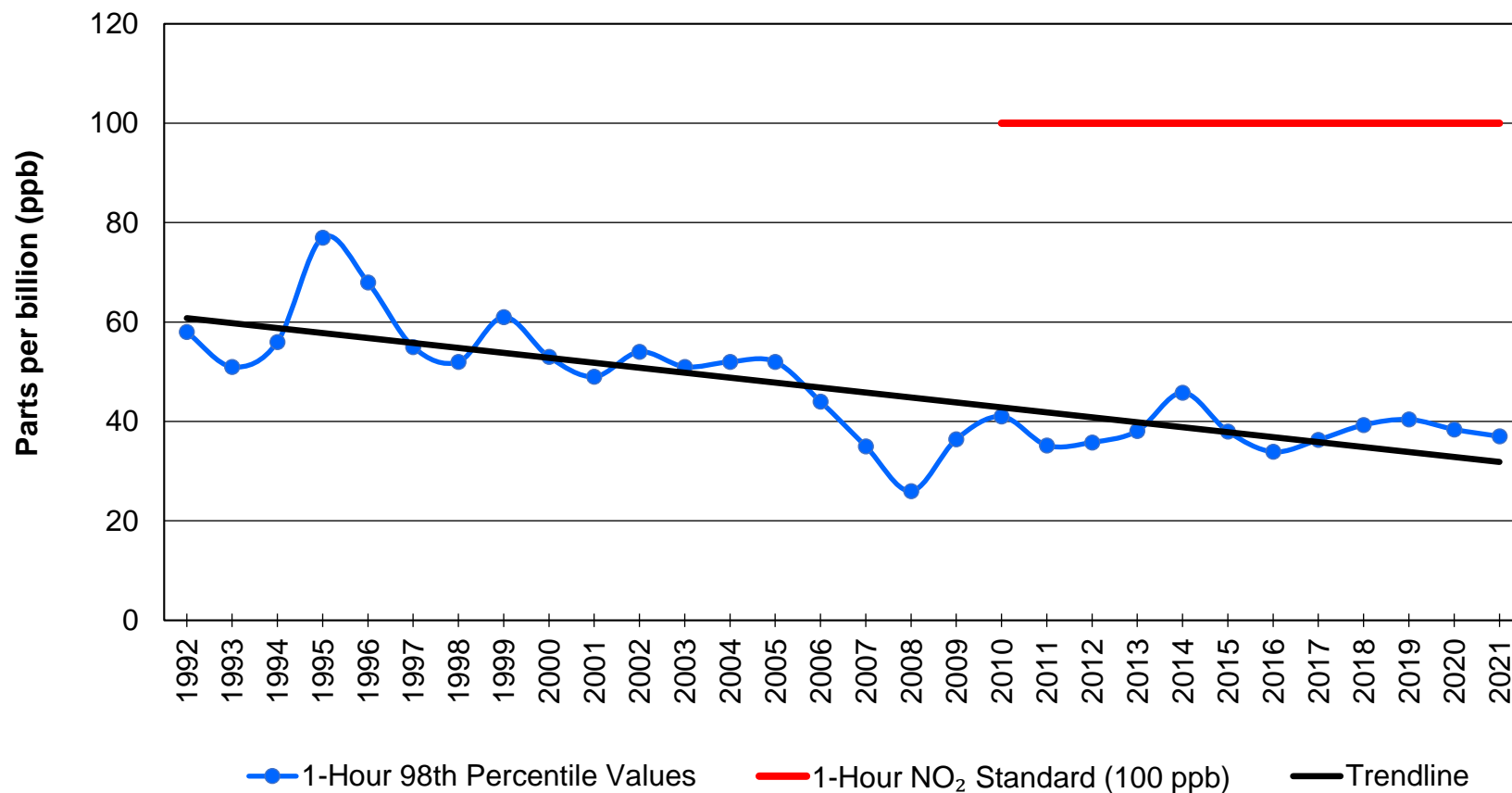
Annual Arithmetic Mean NO₂ Values North Central Indiana



In 1971, United States Environmental Protection Agency (U.S.EPA) established an annual nitrogen dioxide (NO₂) standard ([36 FR 8186](#)). The standard was set at 53 parts per billion (ppb), which cannot be exceeded.

Nitrogen Dioxide

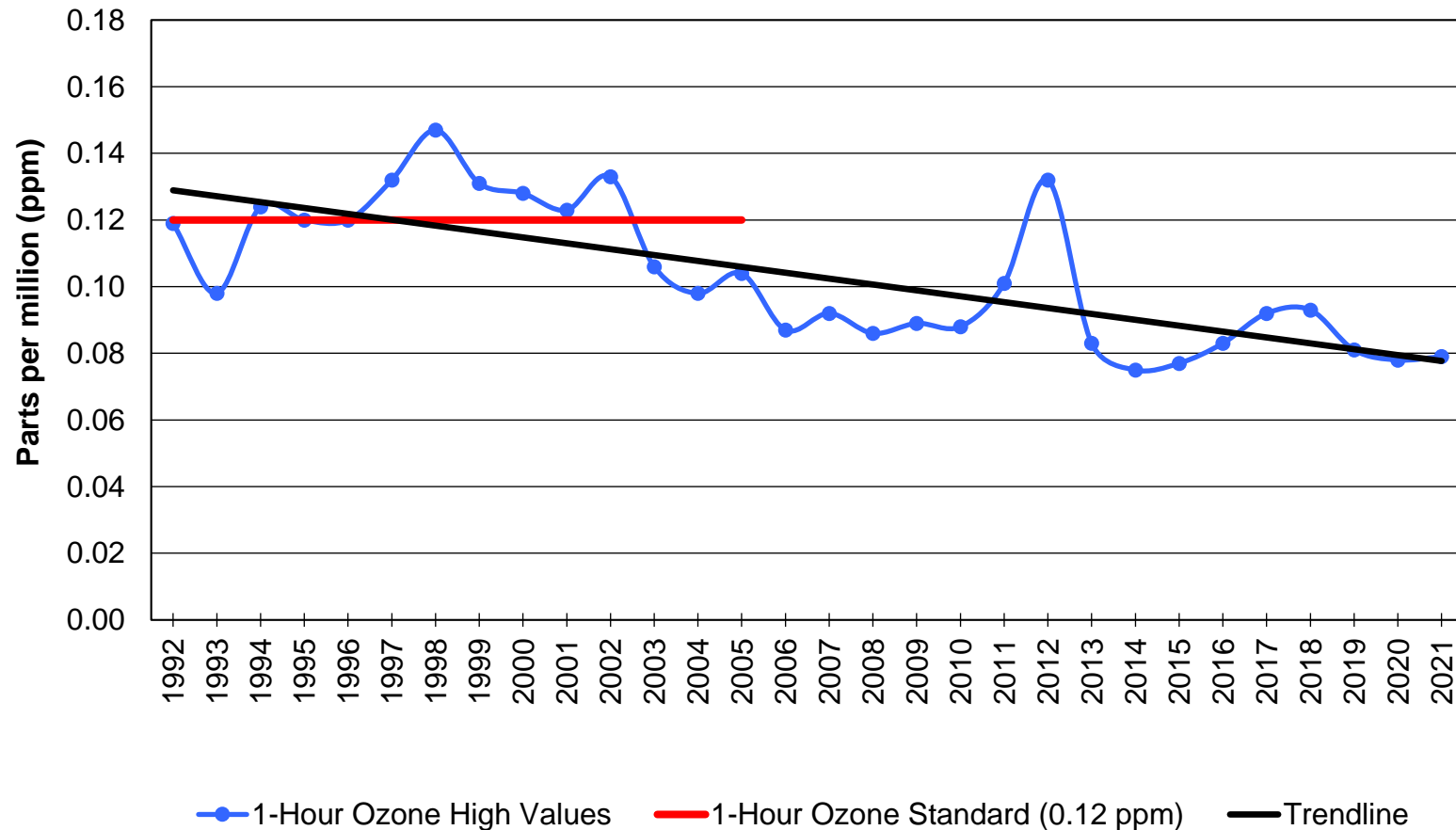
1-Hour NO₂ 98th Percentile Values North Central Indiana



In 2010, United States Environmental Protection Agency (U.S. EPA) established a 1-hour nitrogen dioxide (NO₂) standard ([75 FR 6474](#)). The standard was set at 100 parts per billion (ppb) with the 98th percentile of daily maximum concentrations averaged over a 3-year period not to be exceeded.

Ozone

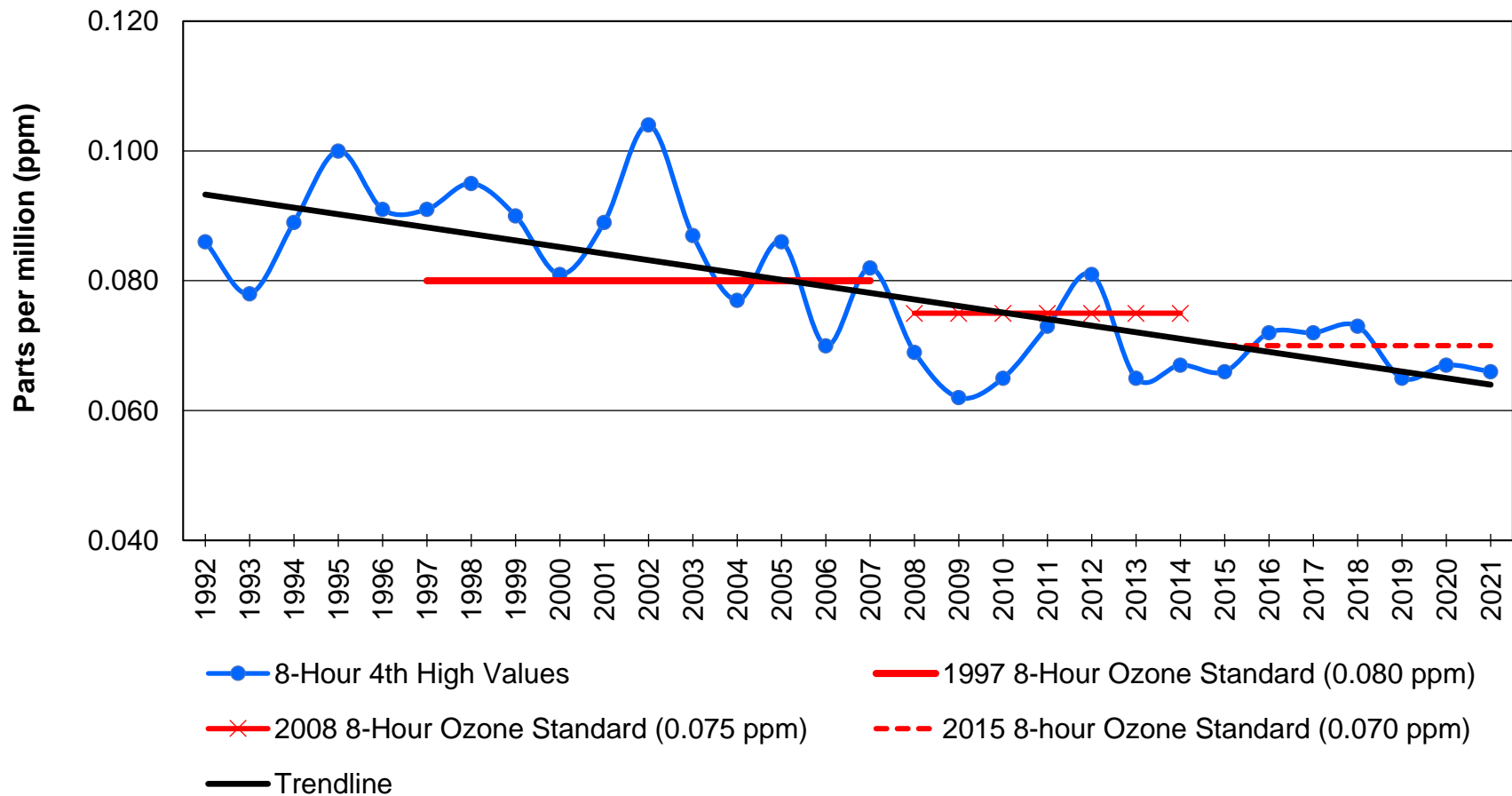
1-Hour Ozone High Values North Central Indiana



In 1979, United States Environmental Protection Agency (U.S. EPA) established a 1-hour ozone standard ([44 FR 8202](#)). The standard was set at 0.12 parts per million (ppm) not to be exceeded more than once per year on average over three years. In 2005, U.S. EPA revoked the 1-hour standard, however IDEM continues to monitor for the standard.

Ozone

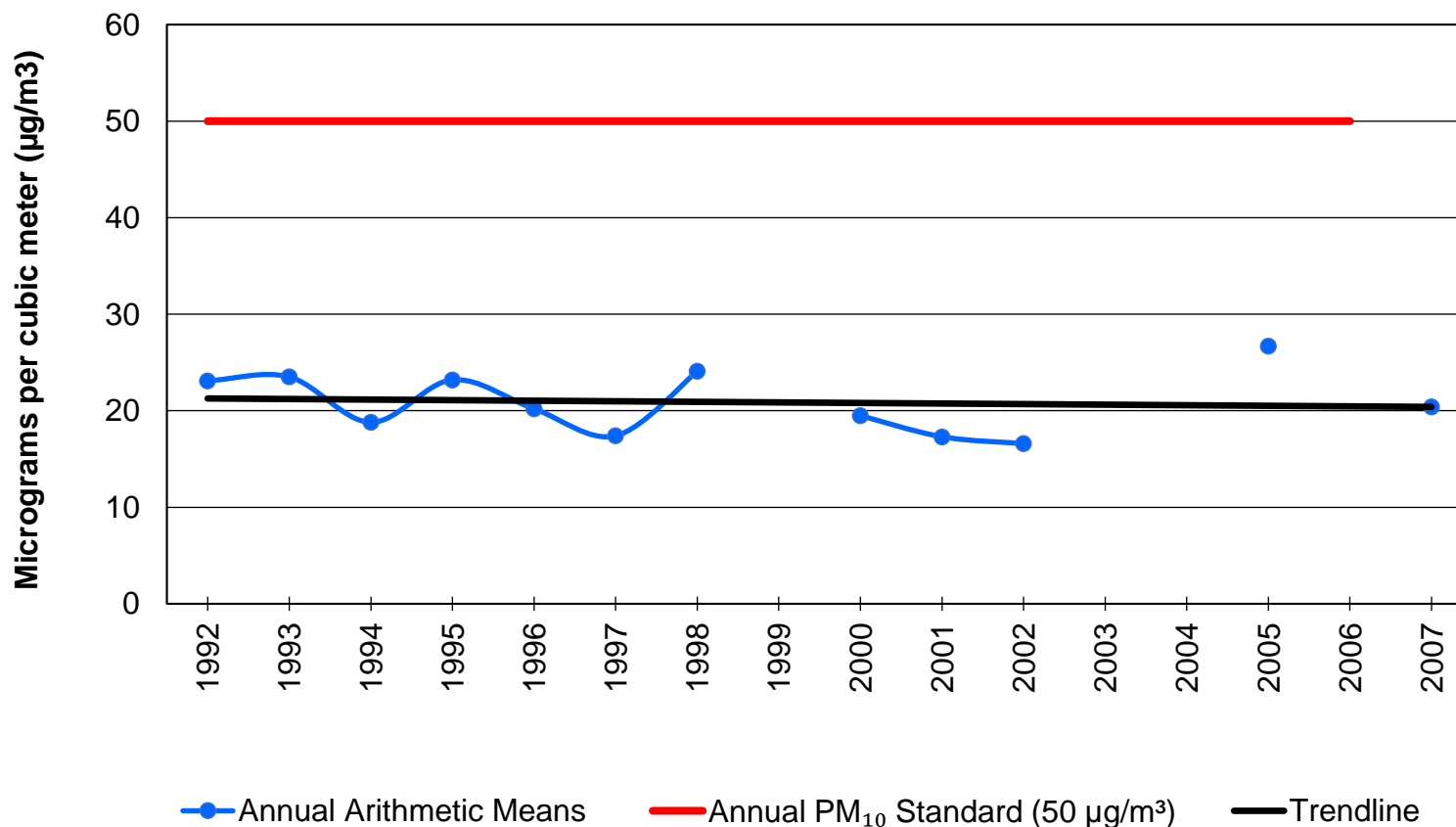
8-Hour Ozone 4th High Values North Central Indiana



In 1997, United States Environmental Protection Agency (U.S. EPA) established an 8-hour ozone standard ([62 FR 38856](#)). The standard was set at 0.080 parts per million (ppm) not to be exceeded. In 2007, U.S. EPA lowered the 8-hour standard to 0.075 ppm not to be exceeded ([73 FR 16436](#)) and in 2015 further strengthened the standard to 0.070 ppm ([80 FR 65292](#)). Compliance is determined by evaluating the fourth highest daily maximum concentration averaged over a 3-year period.

Particulate Matter

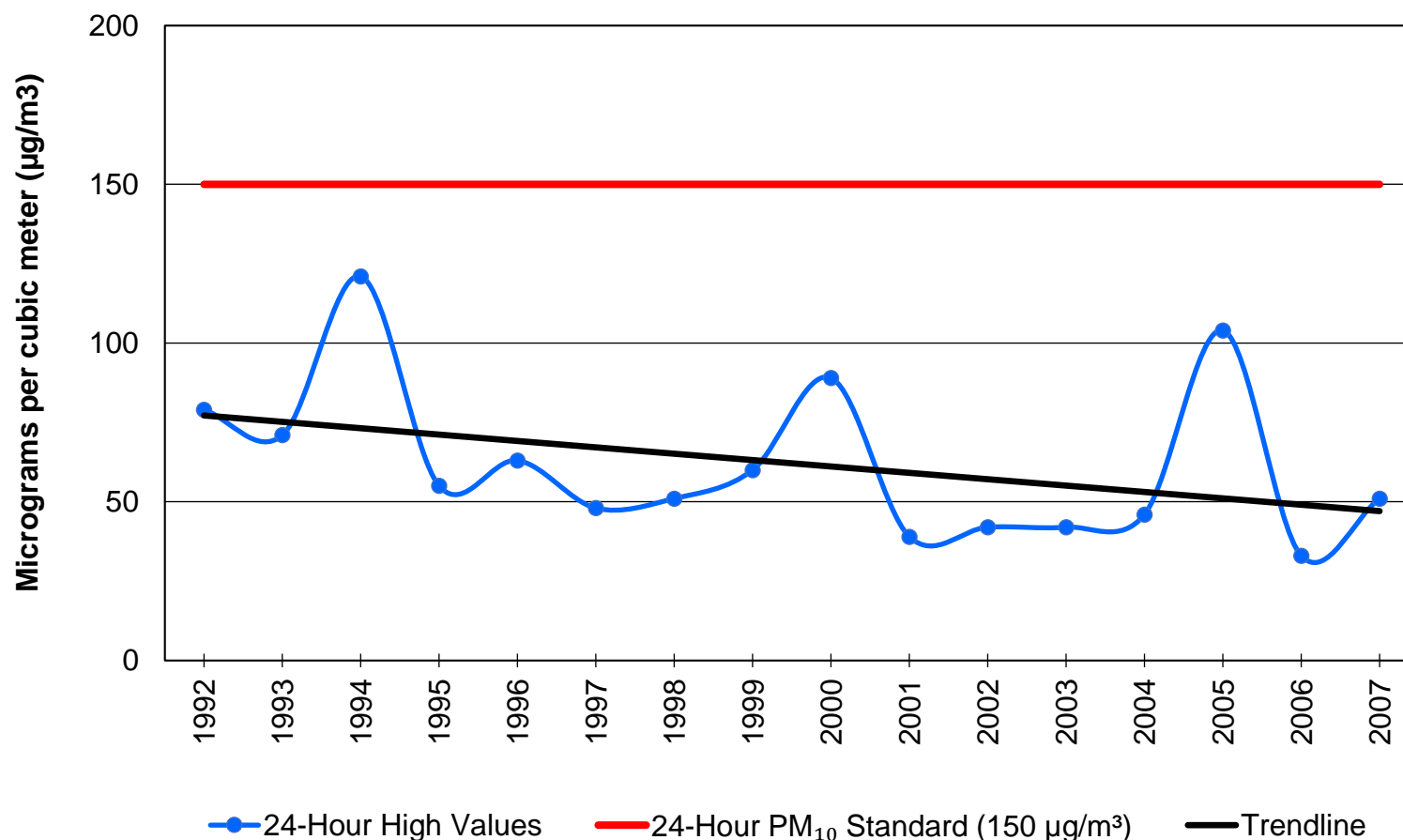
Annual Arithmetic Mean PM₁₀ Values North Central Indiana



In 1987, United States Environmental Protection Agency (U.S. EPA) established an annual coarse particles (PM₁₀) standard ([52 FR 24634](#)). The standard was set at 50 micrograms per cubic meter (µg/m³) with the annual arithmetic mean averaged over a 3-year period not to be exceeded. In 2006, U.S. EPA revoked the annual standard, however IDEM continues to monitor for the annual standard in certain regions.

Particulate Matter

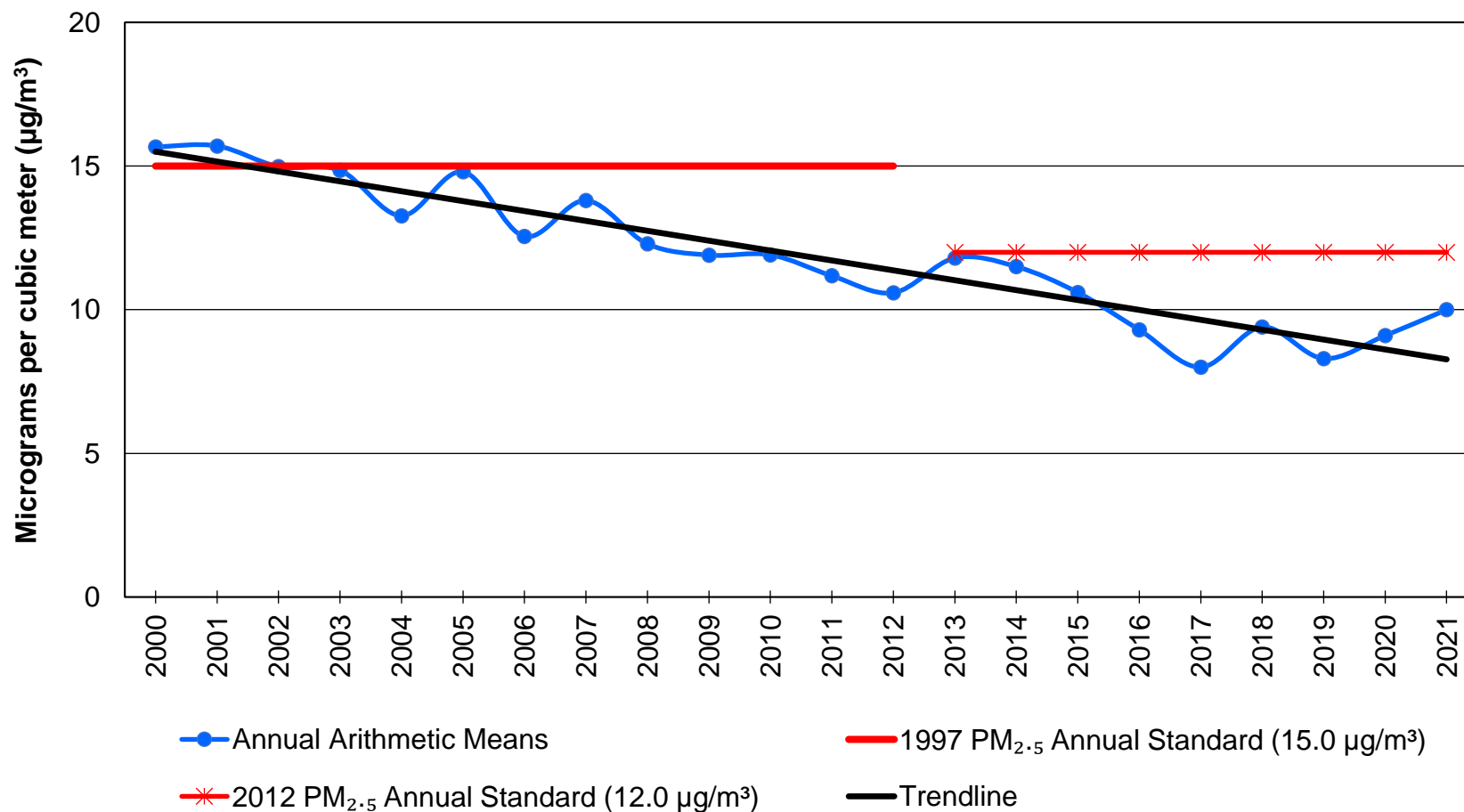
24-Hour PM₁₀ High Values North Central Indiana



In 1987, United States Environmental Protection Agency (U.S. EPA) established a 24-hour coarse particles (PM₁₀) standard ([52 FR 24634](#)). The standard was set at 150 micrograms per cubic meter (µg/m³) not to be exceeded more than once per year on average over three years.

Particulate Matter

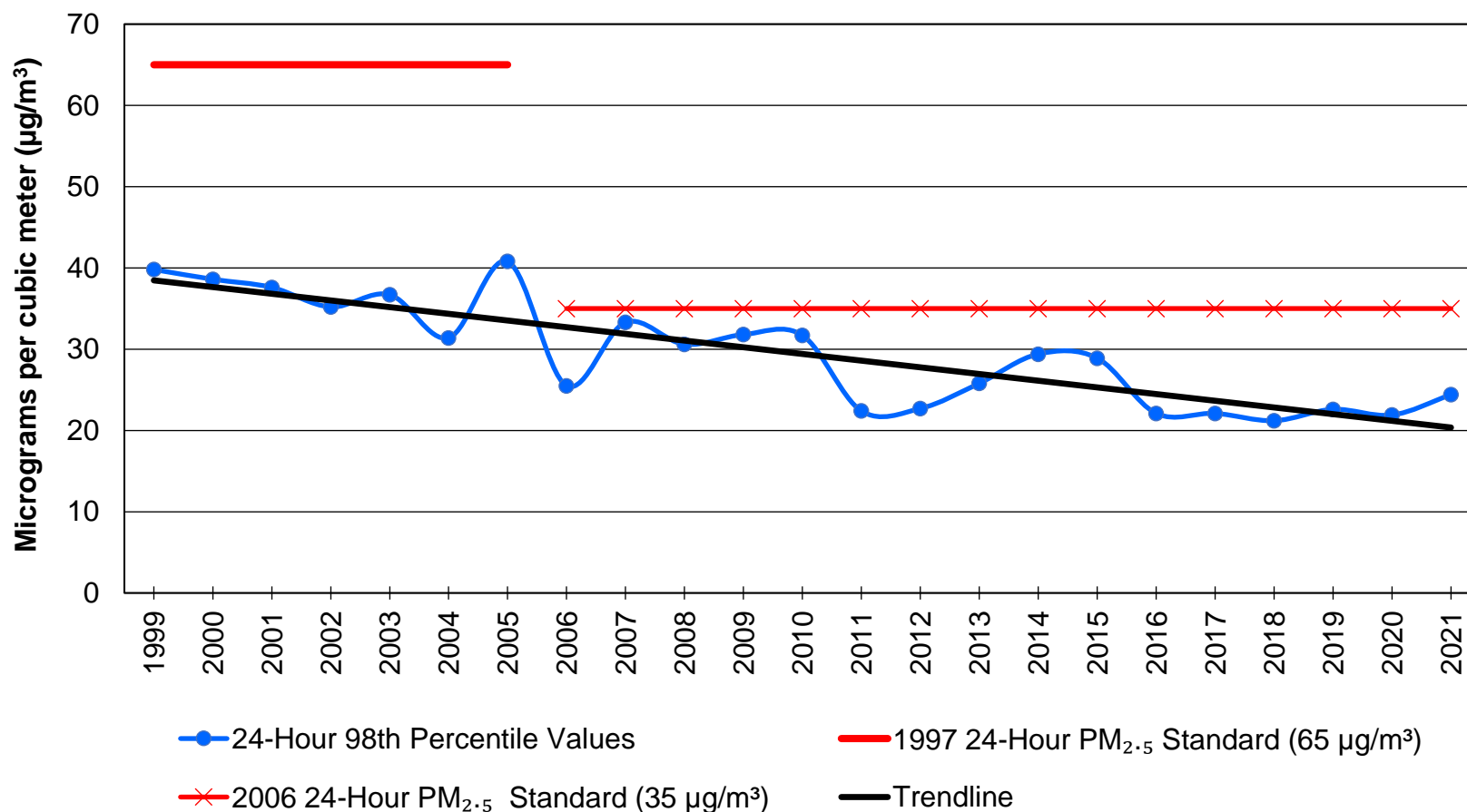
Annual Arithmetic Mean PM_{2.5} Values North Central Indiana



In 1997, United States Environmental Protection Agency (U.S. EPA) established an annual fine particles (PM_{2.5}) standard at 15 micrograms per cubic meter (µg/m³) ([62 FR 38652](#)). In 2013, U.S. EPA lowered the standard to 12 µg/m³ ([78 FR 3085](#)). Compliance is determined by evaluating the annual arithmetic mean averaged over a 3-year period not to be exceeded.

Particulate Matter

24-Hour PM_{2.5} 98th Percentile Values North Central Indiana



In 1997, United States Environmental Protection Agency (U.S. EPA) established a 24-hour fine particles (PM_{2.5}) standard of 65 micrograms per cubic meter (µg/m³) ([62 FR 38652](#)). In 2006, U.S. EPA lowered the standard to 35 µg/m³ ([71 FR 61144](#)). Compliance is determined by evaluating the 98th percentile averaged over a 3-year period not to be exceeded.

Air Quality and You

- To learn more about your air quality and what you can do to help, visit:

Indiana's Smogwatch Air Quality:

[Current Conditions \(in.gov\)](#)

- To acquire additional information about air quality in Indiana and IDEM's role, visit:

www.idem.IN.gov/airquality

Contact Information for IDEM's Office of Air Quality

- To call, please dial:

(317) 233-0178

- To write, please use this mailing address:

**IDEM, Office of Air Quality
100 North Senate Avenue, IGCN 1003
Indianapolis, IN 46204-2251**