



MONTHLY MANAGEMENT REPORT
Division of Family Resources
October 2008

October 2008

State of Indiana
Mitchell E. Daniels, Jr.
Governor

**Family and Social Services
Administration**

E. Mitchell Roob Jr.
Secretary

Division of Family Resources

Zach Main
Director

For question or to obtain a hard copy of this report contact:
DFRReportsandStatistics@fssa.IN.gov



State of Indiana

Published December 2008



Division of Family Resources

Monthly Management Report

Statewide

October 2008

TEMPORARY ASSISTANCE FOR NEEDY FAMILIES (TANF)

Source: FSSA Reports, Statistics, ICES

| TANF - REGULAR | October 2008 | September 2008 | October 2007 | Annual Change |
|--|--------------|----------------|--------------|---------------|
| Number of families receiving TANF grants | 36,592 | 36,866 | 40,636 | -9.95% |
| Total number of grant recipients | 96,351 | 97,347 | 108,880 | -11.51% |
| Number of adult grant recipients | 29,208 | 29,482 | 33,234 | -12.11% |
| Number of child grant recipients | 67,143 | 67,865 | 75,646 | -11.24% |
| Total payments | \$7,661,187 | \$7,650,610 | \$8,362,551 | -8.39% |
| Average payment per case | \$209.37 | \$207.52 | \$205.79 | 1.74% |
| Average payment per person | \$79.51 | \$78.59 | \$76.81 | 3.53% |
| Number of TANF cases with benefits reduced to zero | 3,729 | 3,787 | 4,543 | -17.92% |
| Number of TANF recipients with benefits reduced to zero | 10,703 | 10,847 | 13,411 | -20.19% |
| Number of adult recipients | 3,550 | 3,609 | 4,472 | -20.62% |
| Number of child recipients | 7,153 | 7,238 | 8,939 | -19.98% |
| TANF - UNEMPLOYED PARENT | | | | |
| Number of families receiving TANF-UP grants | 4,263 | 4,279 | 1,913 | 122.84% |
| Number of recipients receiving TANF-UP grants | 17,221 | 17,326 | 8,217 | 109.58% |
| Number of adult grant recipients | 7,697 | 7,738 | 3,825 | 101.23% |
| Number of child grant recipients | 9,524 | 9,588 | 4,392 | 116.85% |
| Total payments | \$1,195,504 | \$1,181,138 | \$522,821 | 128.66% |
| Average payment per case | \$280.44 | \$276.03 | \$273.30 | 2.61% |
| Average payment per person | \$69.42 | \$68.17 | \$63.63 | 9.11% |
| Number of TANF-UP cases with benefits reduced to zero | 467 | 517 | 290 | 61.03% |
| Number of TANF-UP recipients with benefits reduced to zero | 1,941 | 2,145 | 1,275 | 52.24% |
| Number of adult recipients | 889 | 995 | 580 | 53.28% |
| Number of child recipients | 1,052 | 1,150 | 695 | 51.37% |

All data presented in this report was collected at the end of the reporting month.

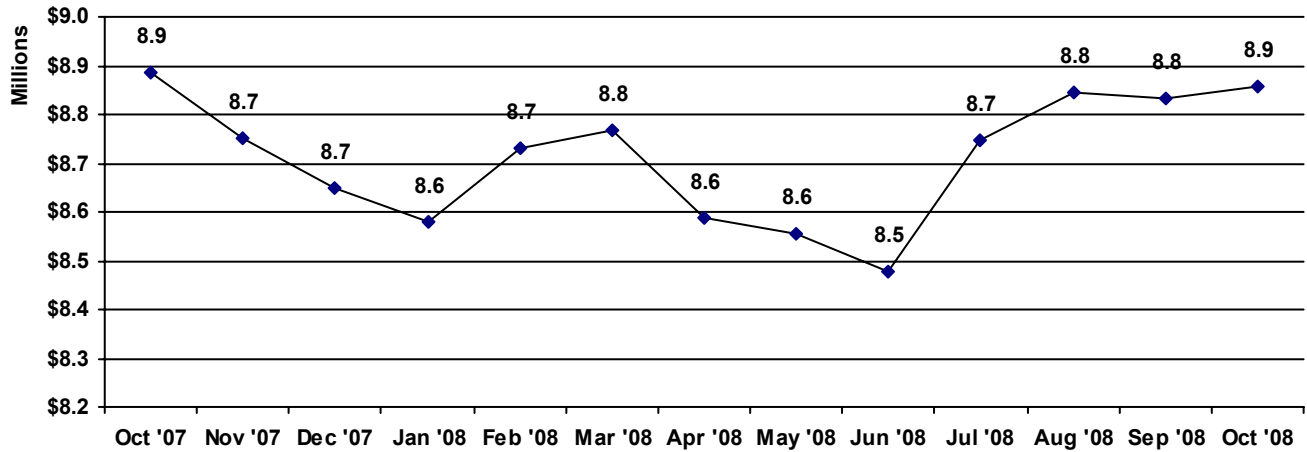


Division of Family Resources Monthly Management Report Statewide October 2008

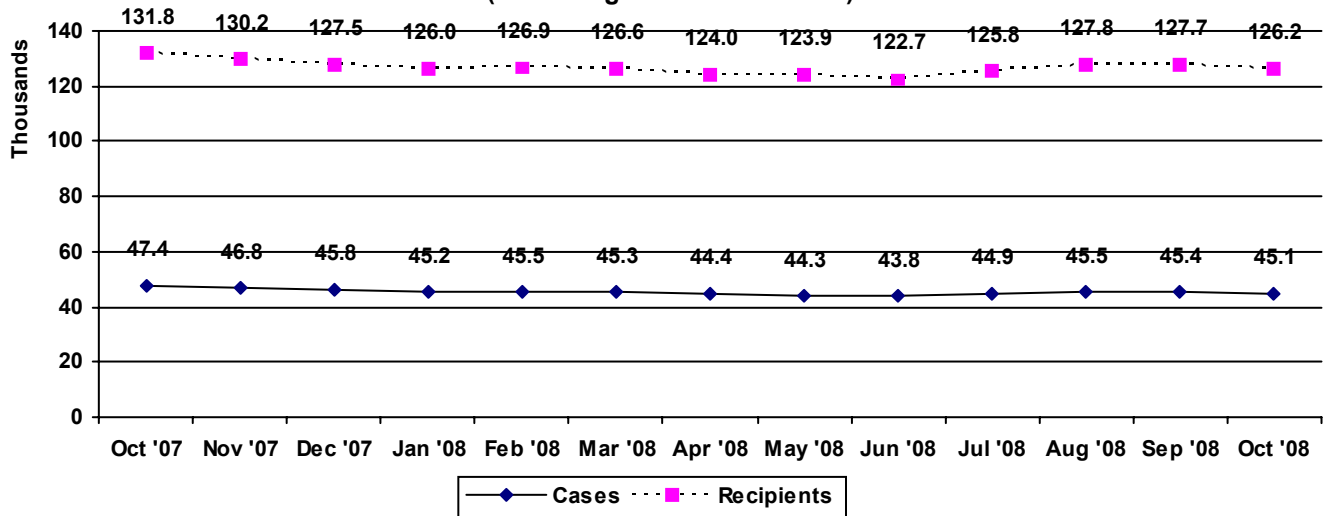
TEMPORARY ASSISTANCE FOR NEEDY FAMILIES (TANF)

Source: FSSA Reports Statistics, ICES

TANF Regular And TANF UP Cash Assistance



**TANF Cases and Recipients
(TANF Regular and TANF UP)**



All data presented in this report was collected at the end of the reporting month.



Division of Family Resources Monthly Management Report Statewide October 2008

FOOD STAMPS Source: FSSA Reports Statistics, ICES

| | October 2008 | September 2008 | October 2007 | Annual % Change |
|---------------------------------------|--------------|----------------|--------------|-----------------|
| Total stamps issued | \$90,725,379 | \$73,790,762 | \$62,389,595 | 45.42% |
| Number of households receiving stamps | 312,104 | 286,726 | 261,503 | 19.35% |
| Number of recipients | 740,347 | 672,551 | 607,724 | 21.82% |
| Average stamps per household | \$290.69 | \$257.36 | \$238.58 | 21.84% |
| Average stamps per recipient | \$122.54 | \$109.72 | \$102.66 | 19.37% |

FOOD STAMPS ERROR RATES Source: FSSA Reports Statistics, ICES

| | July 2008 | June 2008 | May 2008 | Cumulative FFY 2007 |
|------------------------------------|-----------|-----------|----------|---------------------|
| FFY Cumulative Positive Error Rate | 6.12% | 5.85% | 5.40% | 6.84% |
| Monthly Positive Error Rate | 8.44% | 9.36% | 5.92% | NA |
| FFY Cumulative Negative Error Rate | 12.32% | 12.87% | 12.98% | 5.78% |
| Monthly Negative Error Rate | 7.35% | 12.12% | 17.91% | NA |

Error Rate data is reported by the state before the federal agency has accepted and finalized the results. This rate is subject to revision. Monthly numbers are taken from the end of the month totals. Error status of cases may be changed by either State or Federal Review process, which would cause a change that might not be reflected in the previous monthly numbers.

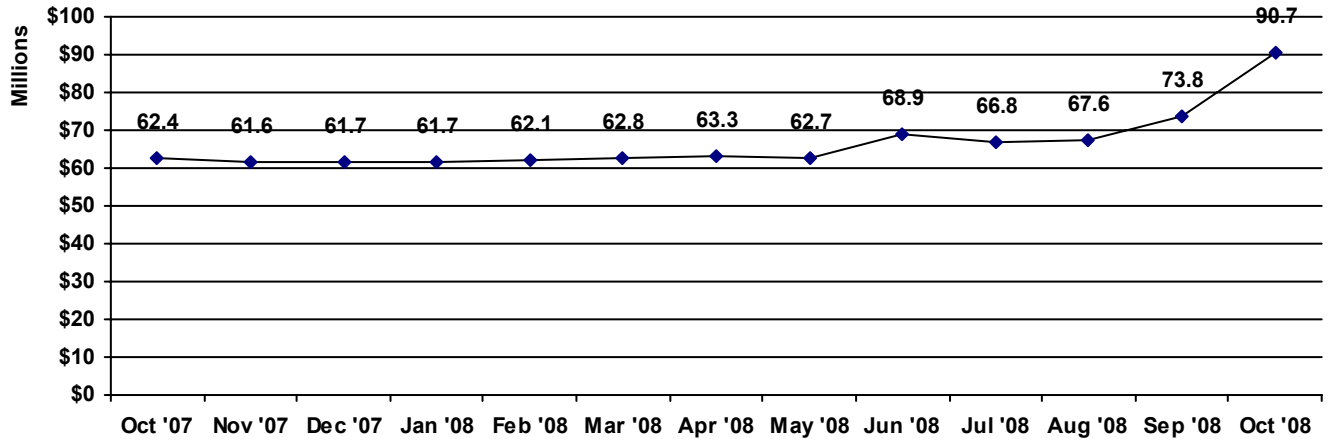
All data presented in this report was collected at the end of the reporting month.



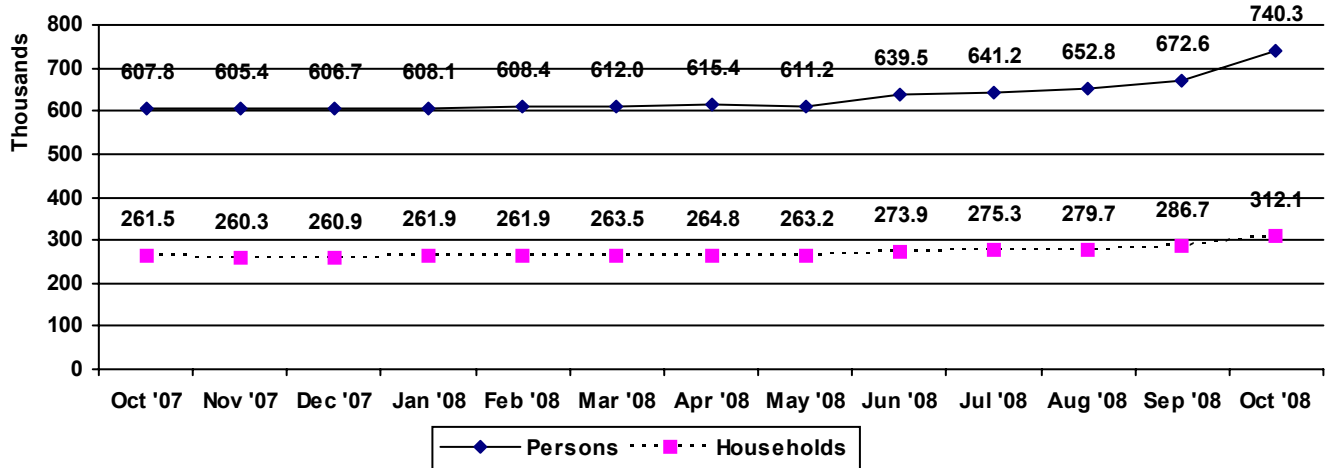
Division of Family Resources Monthly Management Report Statewide October 2008

FOOD STAMPS Source: FSSA Reports Statistics, ICES

Food Stamps Issued



Food Stamps Households and Recipients



All data presented in this report was collected at the end of the reporting month.



Division of Family Resources

Monthly Management Report

Statewide

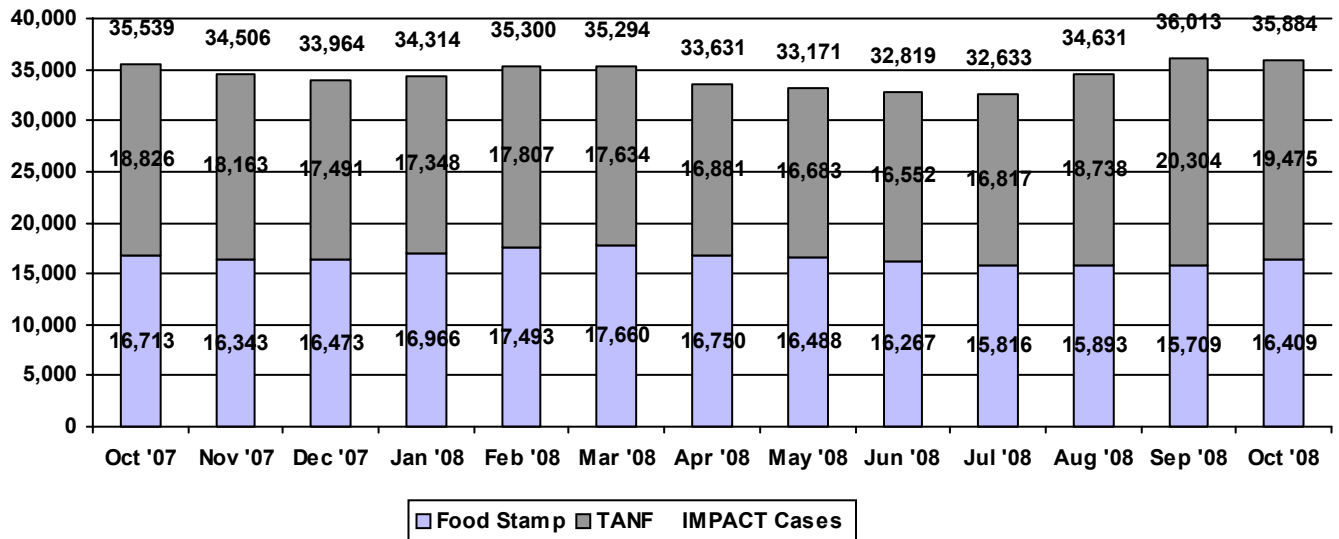
October 2008

IMPACT

Source: FSSA Reports Statistics; FSSA Data Warehouse Project (Employed data)

| | October 2008 | September 2008 | October 2007 | Annual % Change |
|---|--------------|----------------|--------------|-----------------|
| Number of IMPACT cases (See IMPACT note) | 35,884 | 36,013 | 35,539 | 0.97% |
| Number of TANF IMPACT Cases | 19,475 | 20,304 | 18,826 | 3.45% |
| Number of Food Stamp Cases | 16,409 | 15,709 | 16,713 | -1.82% |
| Total number of adults employed | 2,527 | 1,310 | 4,066 | -37.85% |
| Number of TANF IMPACT adults employed | 1,090 | 518 | 1,783 | -38.87% |
| Number of Food Stamp adults employed | 1,437 | 792 | 2,283 | -37.06% |
| Total number of adults ineligible due to employment | 964 | 868 | 966 | -0.21% |
| Number of TANF adults | 201 | 164 | 215 | -6.51% |
| Number of Food Stamp adults | 763 | 704 | 751 | 1.60% |

IMPACT Caseloads



Prior to October 2003, IMPACT caseloads did not include Employed or Sanction clients. Beginning October 2003, ICES programming changes allowed the capturing of this data. April 2007 there was a change in the data collection procedure causing the employed numbers to be low for that month.

All data presented in this report was collected at the end of the reporting month.

Prepared by:
Reports and Statistics

Published:
December 2008



Division of Family Resources
Monthly Management Report
Statewide
October 2008

CHILD CARE

Source: DFR Child Development, CCDF-Prodnew

| | October 2008 | September 2008 | October 2007 | Annual % Change |
|--|--------------|----------------|--------------|-----------------|
| Total Subsidized Child Care Payments | \$12,288,039 | \$11,634,967 | \$11,425,344 | 7.55% |
| Number of CCDF Children | 35,225 | 34,895 | 35,086 | 0.40% |
| Number of Licensed Child Care Homes | 3,071 | 3,071 | 3,017 | 1.79% |
| Licensed Capacity of Child Care Homes | 37,928 | 37,842 | 37,165 | 2.05% |
| Number of Licensed Child Care Centers | 607 | 607 | 604 | 0.50% |
| Licensed Capacity of Child Care Centers | 62,684 | 62,404 | 61,612 | 1.74% |
| Number of Registered Ministries (Capacity not regulated) | 707 | 698 | 667 | 6.00% |

All data presented in this report was collected at the end of the reporting month.



Division of Family Resources
Monthly Management Report
Statewide

October 2008

State of Indiana
Family and Social Services Administration

Monthly Management Report
Definitions of Elements

TANF

The Temporary Assistance for Needy Families (TANF) Program provides cash payments to eligible families with children.

TANF Regular

Number of Families

Total number of households or family units participating in TANF- Regular and TANF-I (Incapacitated Parent). It does not include TANF - UP (Unemployed Parent).

Recipient

A person receiving TANF benefits. There may be more than one recipient in a TANF case.

"Adult" recipient is a person 21 years or older or a person 18 or over with at least one child.

"Child" recipient is an unmarried person under 18 deprived of parental support and living with a specified relative.

Payments

Total cash assistance dollars paid to TANF recipients during the month.

Average payment per Case

Total TANF payments divided by the number of TANF cases receiving a grant. A "case" is a household or family unit participating in TANF- Regular and TANF-I (Incapacitated Parent). It does not include TANF - UP (Unemployed Parent).

Average payment per Recipient

Total TANF payments divided by the number of TANF recipients receiving a grant.

Cases with benefits reduced to zero

TANF families whose cash assistance has been reduced to zero due to income or penalty.

TANF UP (Unemployed Parent Program)

Number of Families

Total number of households or family units participating in TANF UP.

Recipient

A person receiving TANF benefits. There may be more than one recipient in a TANF case.

"Adult" recipient is a person 21 years or older or a person 18 or over with at least one child.

"Child" recipient is an unmarried person under 18 deprived of parental support and living with a specified relative.

Payments

Total cash assistance dollars paid to TANF recipients during the month.

Average payment per Case

Total TANF payments divided by the number of TANF cases receiving a grant. A "case" is a household or family unit participating in TANF UP.

Average payment per Recipient

Total TANF payments divided by the number of TANF recipients receiving a grant.

Cases with benefits reduced to zero

TANF families whose cash assistance has been reduced to zero due to income or penalty.

All data presented in this report was collected at the end of the reporting month.



Division of Family Resources Monthly Management Report Statewide October 2008

State of Indiana
Family and Social Services Administration

Monthly Management Report Definitions of Elements

Food Stamps (FS)

Indiana's Food Stamp Program helps eligible low income families supplement their food purchasing dollars with food stamp coupons.

Total Stamps Issued

Dollar value of total food stamps issued during the month.

Total Households

The number of households participating in the FS program.

Total Persons

The number of persons participating in the FS program.

Average Stamps per Household

The total value of food stamps divided by the number of households.

Average Stamps per Person

The total value of food stamps divided by the total number of recipients.

Positive Error Rate

Dollars paid in error divided by total dollars.

Negative Error Rate

Number of erroneously closed or denied cases divided by total number of cases in sample.

Unregressed

Error rate reported by the state before the federal agency has accepted and finalized the results. This rate is subject to revision.

Employment and Training

IMPACT assists TANF/Food Stamp families to become self-sufficient by helping to provide education, training, and job opportunities and overcoming personal barriers to employment.

Total IMPACT Cases

The total number of active cases with IMPACT activities during the month.

IMPACT-TANF

The number of active TANF cases with IMPACT activities during the month.

IMPACT-Food Stamp

The number of active Food Stamp cases with IMPACT activities during the month.

Total Adults Employed

The total number of IMPACT adults employed during the month.

TANF Adults Employed

The total number of TANF-IMPACT participants that were reported employed during the month.

Food Stamp Adults Employed

The total number of FS-IMPACT participants that were reported employed during the month.

Total Adults ineligible due to employment

The total number of IMPACT adults cases closed during the month because of income from employment.

All data presented in this report was collected at the end of the reporting month.



Division of Family Resources
Monthly Management Report
Statewide
October 2008

State of Indiana
Family and Social Services Administration

**Monthly Management Report
Definitions of Elements**

Child Care

Indiana's child care program provides child caring services reimbursement to eligible families participating in IMPACT, transitioning out of the TANF program, or are low income families at risk of becoming eligible for TANF.

Total Subsidized Child Care Payments

The total value of Child Care Development Fund (CCDF) Child Care Voucher Payments and CCDF Child Care Contract Payments.

Licensed Capacity of Child Care Homes

The number and licensed capacity of licensed day care homes.

Licensed Capacity of Child Care Centers

The number and licensed capacity of licensed day care centers.

Registered Ministries

The number of registered ministries with child caring facilities. The capacity of registered ministries is not regulated.

All data presented in this report was collected at the end of the reporting month.



Division of Family Resources
Monthly Management Report
Statewide
October 2008

State of Indiana
Family and Social Services Administration

Monthly Management Report
Definitions of Elements

Data Source Systems

CCDF – Prodnew

State and contractor developed database collecting child care services data.

FSSA Data Warehouse

A data coordinating entity established to

prepare federal TANF reports.

ICES

Indiana Client Eligibility System is a federally certified online, integrated, eligibility system that supports the administration of TANF, Food Stamps, IMPACT, and Medicaid Eligibility.

All data presented in this report was collected at the end of the reporting month.