



## DIVISION OF FAMILY RESOURCES

# Monthly Management Report July 2014

### State of Indiana

Michael R. Pence  
Governor

### Family and Social Services Administration

John J. Wernert, M.D.  
Secretary

### Division of Family Resources

Lance Rhodes  
Director

For questions regarding data on this report contact:  
[office.Communications@fssa.IN.gov](mailto:office.Communications@fssa.IN.gov)



## State of Indiana

Published August 2014



## DIVISION OF FAMILY RESOURCES

### Monthly Management Report

Reporting Month: July 2014

Location: Statewide

#### TEMPORARY ASSISTANCE FOR NEEDY FAMILIES (TANF)

Child-Only and One-Parent Families	July 2014	June 2014	July 2013	Annual Change
Number of families receiving TANF Grants	9,274	9,328	11,272	-17.73%
Total number of grant recipients	19,657	19,762	24,705	-20.43%
Number of adult grant recipients	3,249	3,301	4,735	-31.38%
Number of child grant recipients	16,408	16,461	19,970	-17.84%
Total payments	\$1,718,531	\$1,728,175	\$2,072,703	-17.09%
Average payment per case	\$185.31	\$185.27	\$183.88	0.78%
Average payment per recipient	\$87.43	\$87.45	\$83.90	4.20%
Number of cases with benefits reduced to zero	342	375	490	-30.20%
Number of recipients with benefits reduced to zero	764	824	1,089	-29.84%
Number of adult recipients with benefit reduced to zero	187	197	291	-35.74%
Number of child recipients with benefit reduced to zero	577	627	798	-27.69%

Two-Parent Families	July 2014	June 2014	July 2013	Annual Change
Number of families receiving TANF Grants	643	641	794	-19.02%
Total number of grant recipients	2,637	2,634	3,287	-19.77%
Number of adult grant recipients	991	991	1,288	-23.06%
Number of child grant recipients	1,646	1,643	1,999	-17.66%
Total payments	\$135,160	\$136,795	\$168,546	-19.81%
Average payment per case	\$210.20	\$213.41	\$212.27	-0.98%
Average payment per recipient	\$51.26	\$51.93	\$51.28	-0.04%
Number of cases with benefits reduced to zero	32	34	32	0.00%
Number of recipients with benefits reduced to zero	129	139	106	21.70%
Number of adult recipients with benefit reduced to zero	50	51	47	6.38%
Number of child recipients with benefit reduced to zero	79	88	59	33.90%

**Note:**

All data July 2014 and following will be broken out according to the new DFR region structure effective July 1 2014.

Source:



## DIVISION OF FAMILY RESOURCES

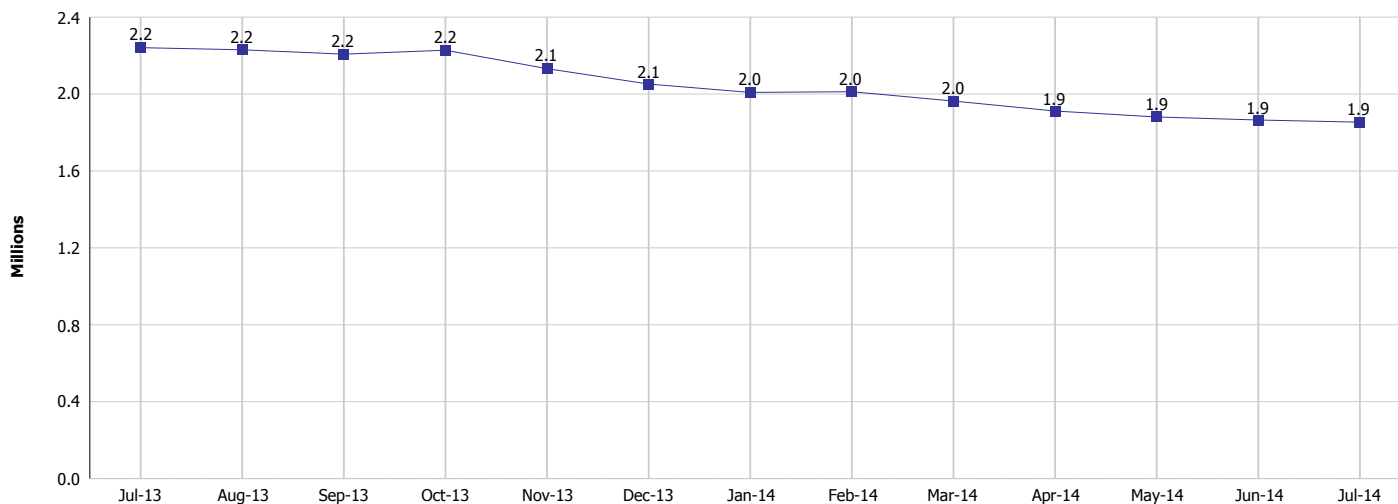
### Monthly Management Report

Reporting Month: July 2014

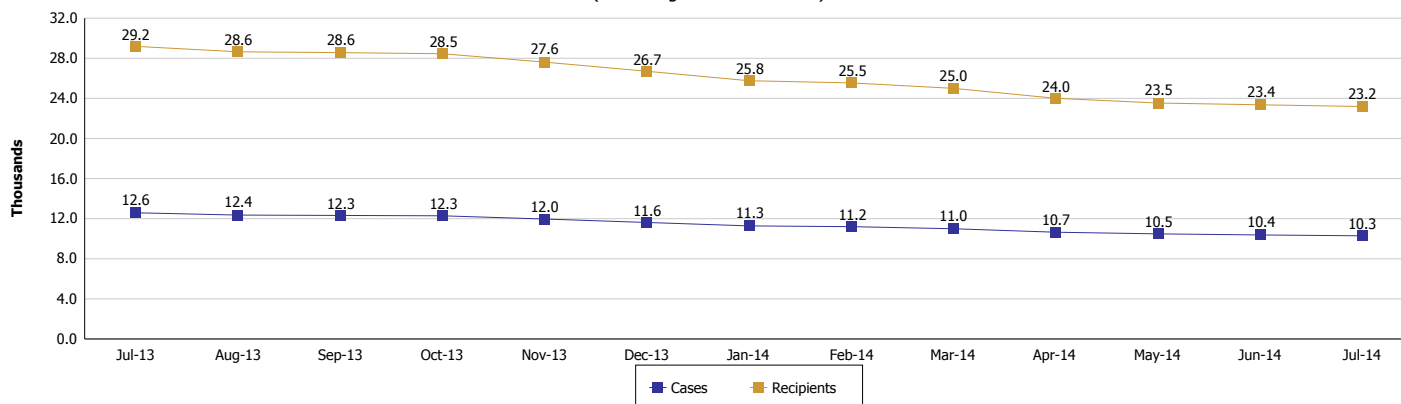
Location: Statewide

#### TEMPORARY ASSISTANCE FOR NEEDY FAMILIES (TANF)

**TANF Cash Assistance**  
(TANF Regular and TANF UP)



**TANF Cases and Recipients**  
(TANF Regular and TANF UP)



**Note:**

All data July 2014 and following will be broken out according to the new DFR region structure effective July 1 2014.



## DIVISION OF FAMILY RESOURCES

### Monthly Management Report

Reporting Month: July 2014

Location: Statewide

#### SUPPLEMENTAL NUTRITION ASSISTANCE PROGRAM (SNAP)

	July 2014	June 2014	July 2013	Annual Change
Total issuance	\$108,603,364	\$107,812,617	\$123,234,405	-11.87%
Number of households receiving SNAP benefits	398,727	399,255	416,749	-4.32%
Number of recipients	877,689	879,342	925,399	-5.16%
Average issuance per household	\$272.38	\$270.03	\$295.70	-7.89%
Average issuance per recipient	\$123.74	\$122.61	\$133.17	-7.08%

**Note:**

All data July 2014 and following will be broken out according to the new DFR region structure effective July 1 2014.

#### SNAP ERROR RATES

	March 2014	February 2014	January 2014	Cumulative FFY 2013
FFY Cumulative Positive Error Rate	4.12%	3.70%	3.86%	3.62%
Monthly Positive Error Rate	5.84%	2.83%	3.67%	NA
FFY Cumulative Negative Error Rate	26.50%	28.57%	28.09%	18.99%
Monthly Negative Error Rate	15.79%	30.51%	32.79%	NA

**Note:**

All data July 2014 and following will be broken out according to the new DFR region structure effective July 1 2014.

**Notes:**

Reporting periods for SNAP Error Rates reflect the review period and Federal submission deadline. The month reported above is the month in which an action was taken included in the review sample.

Positive actions are those which produced an issuance of benefits to a household. Negative actions are those which closed or denied benefits to a household.

Error Rate data is reported by the state before the federal agency has accepted and finalized the results. This rate is subject to revision based upon: completion and submission of outstanding reviews; final review corrections; and completion of previously dropped reviews. Monthly numbers are taken from end-of-month totals. The error status of cases may be changed by the State or Federal Review process, which would cause a change that might not be reflected in the previous monthly numbers.



# DIVISION OF FAMILY RESOURCES

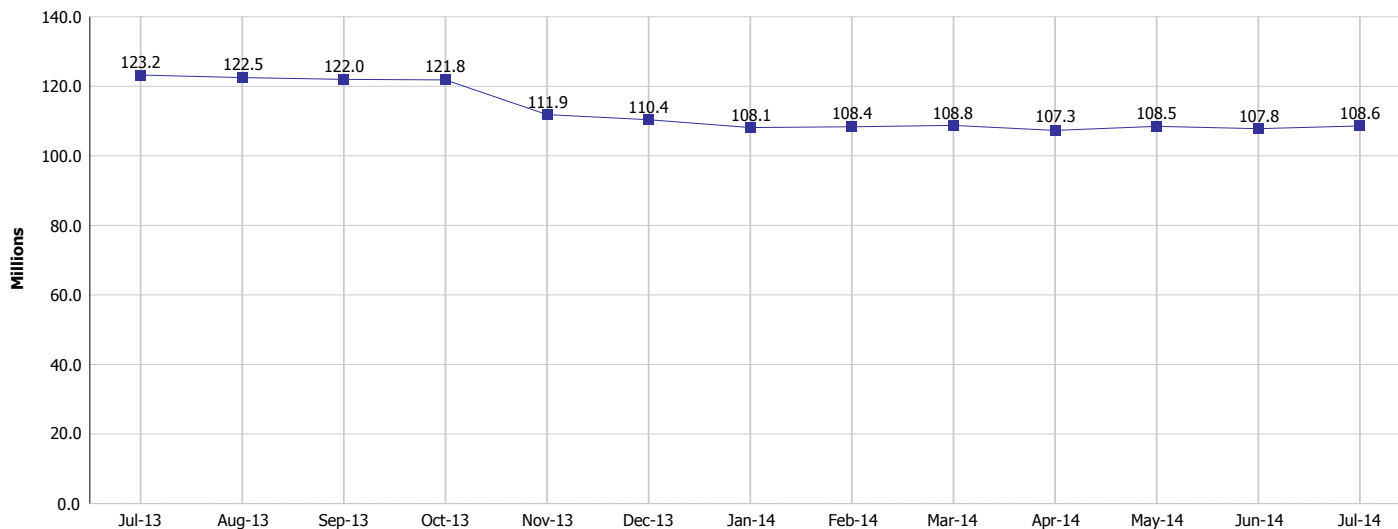
## Monthly Management Report

Reporting Month: July 2014

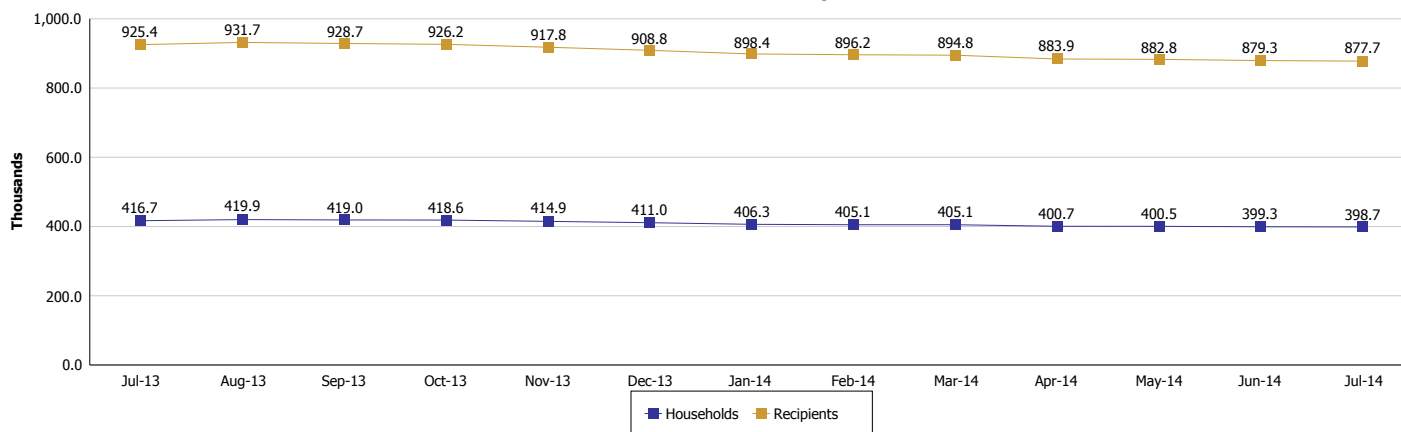
Location: Statewide

### SUPPLEMENTAL NUTRITION ASSISTANCE PROGRAM (SNAP)

#### SNAP Issuance



#### SNAP Households and Recipients



**Note:**

All data July 2014 and following will be broken out according to the new DFR region structure effective July 1 2014.



## DIVISION OF FAMILY RESOURCES

### Monthly Management Report

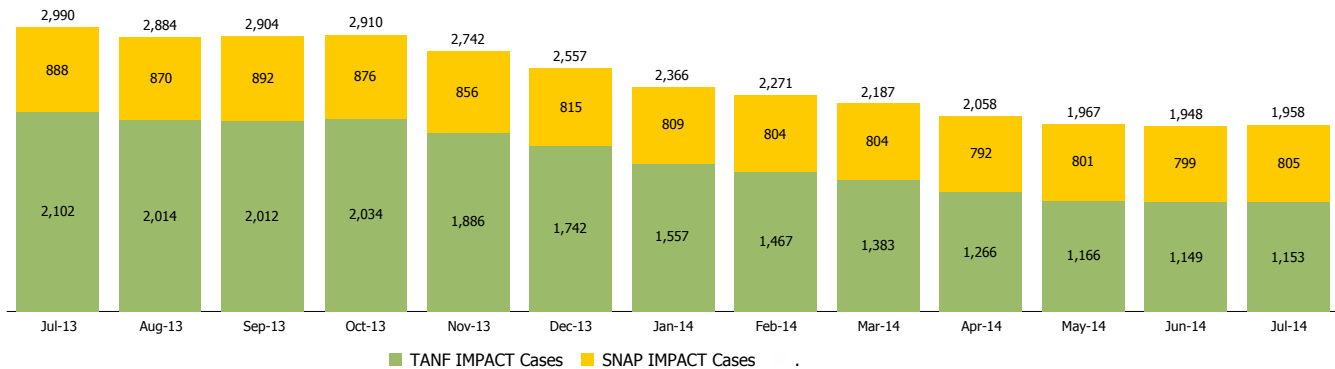
Reporting Month: July 2014

Location: Statewide

#### INDIANA MANPOWER PLACEMENT AND COMPREHENSIVE TRAINING (IMPACT)

	July 2014	June 2014	July 2013	Annual Change
Number of IMPACT cases	1,958	1,948	2,990	-34.52%
Number of TANF IMPACT adults	1,153	1,149	2,102	-45.15%
Number of SNAP IMPACT Cases	805	799	888	-9.35%
Total number of adults employed	222	200	274	-18.98%
Number of TANF IMPACT adults newly employed (within past 30 days)	116	126	215	-46.05%
Number of SNAP IMPACT adults employed	106	74	59	79.66%
Total number of adults ineligible due to employment	2,314	2,211	1,782	29.85%
Number of TANF adults ineligible due to employment	24	22	27	-11.11%
Number of SNAP adults ineligible due to employment	2,290	2,189	1,755	30.48%

**IMPACT Caseloads**  
(SNAP, TANF, Total Caseload)



**Note:**

All data July 2014 and following will be broken out according to the new DFR region structure effective July 1 2014.



## DIVISION OF FAMILY RESOURCES

### Monthly Management Report

Reporting Month: July 2014

Location: Statewide

#### CHILD CARE

	July 2014	June 2014	July 2013	Annual Change
Total Subsidized Child Care Payments	17,244,898	24,864,573	14,380,487	19.92%
Total Number of CCDF Children	39,123	43,241	36,533	7.09%
Total Number of licensed Child Care Homes	2,783	2,793	2,815	-1.14%
Licensed Capacity of Child Care Homes	35,476	35,474	35,727	-0.70%
Total Number of Licensed CC Centers	595	590	588	1.19%
Licensed Capacity of CC Centers	65,308	64,895	64,106	1.88%
Total Number of Registered Ministries (Capacity not Regulated)	644	646	663	-2.87%

**Note:**

All data July 2014 and following will be broken out according to the new DFR region structure effective July 1 2014.