



DIVISION OF FAMILY RESOURCES

Monthly Management Report September 2012

State of Indiana
Mitchell E. Daniels, Jr.
Governor

**Family and Social Services
Administration**
Michael Gargano
Secretary

**Division of Family
Resources**
Mike Carr
Interim Director

For questions regarding data on this report contact:
office.Communications@fssa.IN.gov



State of Indiana

Published October 2012



DIVISION OF FAMILY RESOURCES

Monthly Management Report

Reporting Month: September 2012

Location: Statewide

TEMPORARY ASSISTANCE FOR NEEDY FAMILIES (TANF)

Child-Only and One-Parent Families	September 2012	August 2012	September 2011	Annual Change
Number of families receiving TANF Grants	13,908	14,192	20,213	-31.19%
Total number of grant recipients	31,983	32,718	49,270	-35.09%
Number of adult grant recipients	7,012	7,254	12,978	-45.97%
Number of child grant recipients	24,971	25,464	36,292	-31.19%
Total payments	\$2,613,661	\$2,677,534	\$4,087,164	-36.05%
Average payment per case	\$187.93	\$188.67	\$202.20	-7.06%
Average payment per recipient	\$81.72	\$81.84	\$82.95	-1.49%
Number of cases with benefits reduced to zero	687	758	1,835	-62.56%
Number of recipients with benefits reduced to zero	1,705	1,924	5,123	-66.72%
Number of adult recipients with benefit reduced to zero	491	557	1,639	-70.04%
Number of child recipients with benefit reduced to zero	1,214	1,367	3,484	-65.15%

Two-Parent Families	September 2012	August 2012	September 2011	Annual Change
Number of families receiving TANF Grants	1,009	1,007	1,808	-44.19%
Total number of grant recipients	4,085	4,101	7,269	-43.80%
Number of adult grant recipients	1,601	1,593	3,058	-47.65%
Number of child grant recipients	2,484	2,508	4,211	-41.01%
Total payments	\$216,001	\$220,949	\$474,092	-54.44%
Average payment per case	\$214.07	\$219.41	\$262.22	-18.36%
Average payment per recipient	\$52.88	\$53.88	\$65.22	-18.93%
Number of cases with benefits reduced to zero	38	49	283	-86.57%
Number of recipients with benefits reduced to zero	148	211	1,231	-87.98%
Number of adult recipients with benefit reduced to zero	52	75	528	-90.15%
Number of child recipients with benefit reduced to zero	96	136	703	-86.34%



DIVISION OF FAMILY RESOURCES

Monthly Management Report

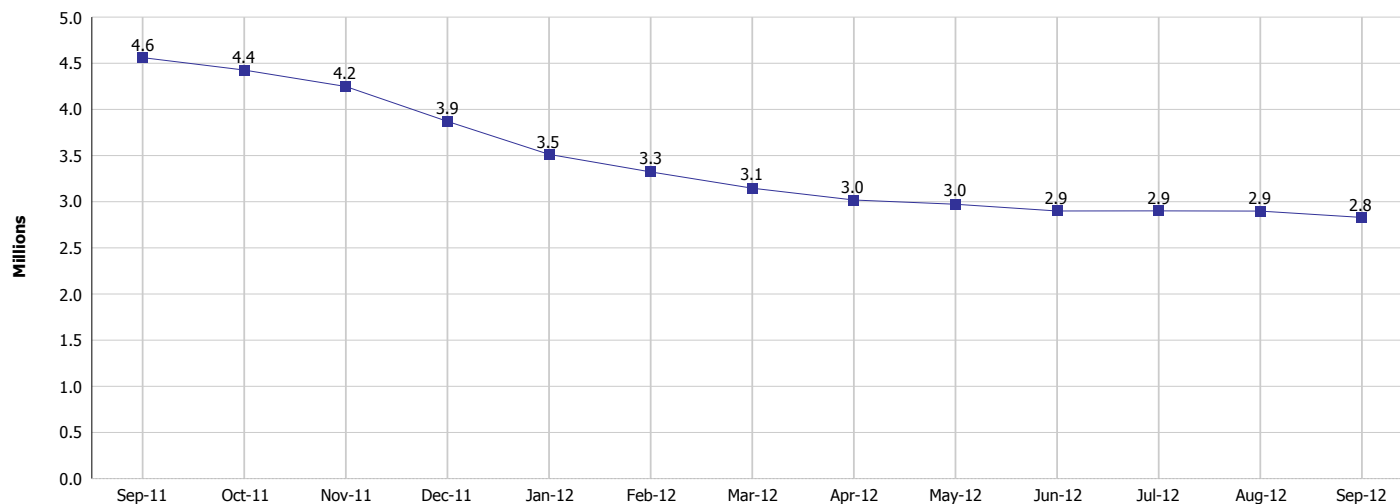
Reporting Month: September 2012

Location: Statewide

TEMPORARY ASSISTANCE FOR NEEDY FAMILIES (TANF)

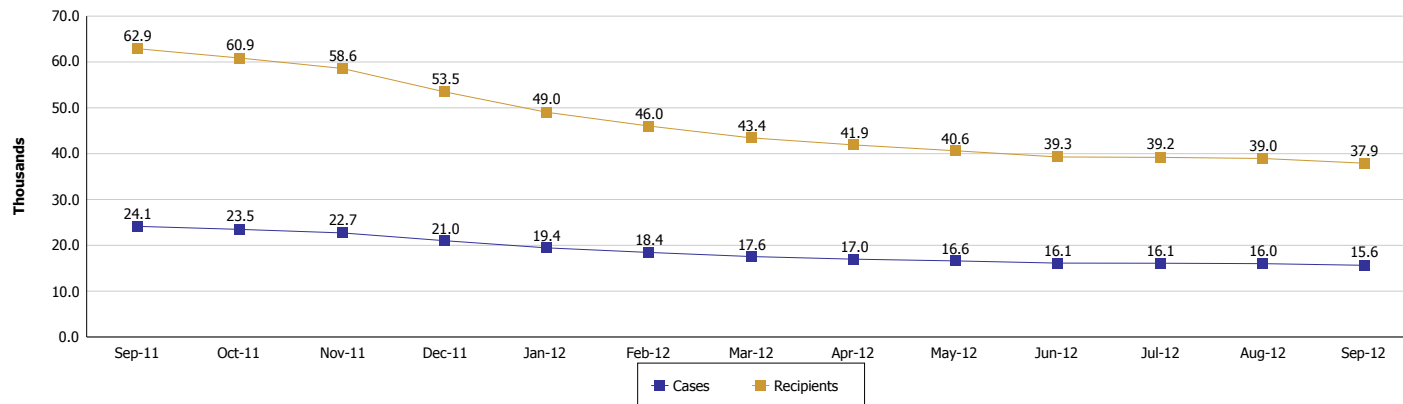
TANF Cash Assistance

(TANF Regular and TANF UP)



TANF Cases and Recipients

(TANF Regular and TANF UP)





DIVISION OF FAMILY RESOURCES

Monthly Management Report

Reporting Month: September 2012

Location: Statewide

SUPPLEMENTAL NUTRITION ASSISTANCE PROGRAM (SNAP)

	September 2012	August 2012	September 2011	Annual Change
Total issuance	\$122,618,428	\$124,894,168	\$118,627,134	3.36%
Number of households receiving SNAP benefits	410,930	410,229	392,286	4.75%
Number of recipients	923,253	922,488	896,405	3.00%
Average issuance per household	\$298.39	\$304.45	\$302.40	-1.33%
Average issuance per recipient	\$132.81	\$135.39	\$132.34	0.36%

SNAP ERROR RATES

	May 2012	April 2012	March 2012	Cumulative FFY 2010
FFY Cumulative Positive Error Rate	4.74%	4.95%	4.98%	2.48%
Monthly Positive Error Rate	3.35%	4.73%	4.09%	NA
FFY Cumulative Negative Error Rate	1.24%	1.42%	1.10%	2.69%
Monthly Negative Error Rate	0.00%	3.33%	1.85%	NA

Notes:

Reporting periods for SNAP Error Rates reflect the review period and Federal submission deadline. The month reported above is the month in which an action was taken included in the review sample.

Positive actions are those which produced an issuance of benefits to a household. Negative actions are those which closed or denied benefits to a household.

Error Rate data is reported by the state before the federal agency has accepted and finalized the results. This rate is subject to revision. Monthly numbers are taken from the end of the month totals. Error status of cases may be changed by either State or Federal Review process, which would cause a change that might not be reflected in the previous monthly numbers.



DIVISION OF FAMILY RESOURCES

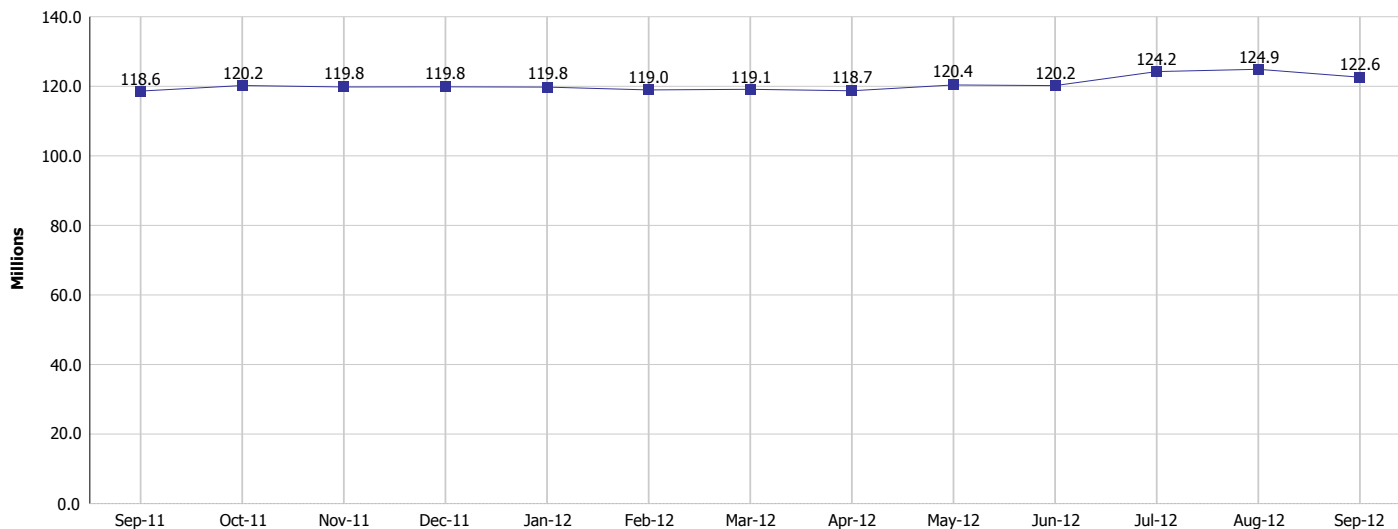
Monthly Management Report

Reporting Month: September 2012

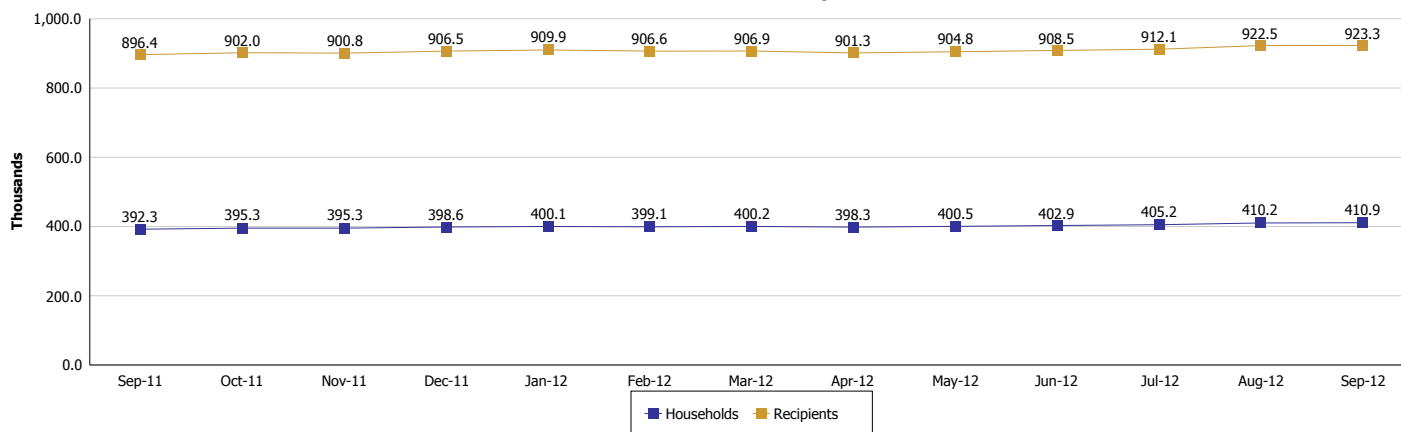
Location: Statewide

SUPPLEMENTAL NUTRITION ASSISTANCE PROGRAM (SNAP)

SNAP Issuance



SNAP Households and Recipients





DIVISION OF FAMILY RESOURCES

Monthly Management Report

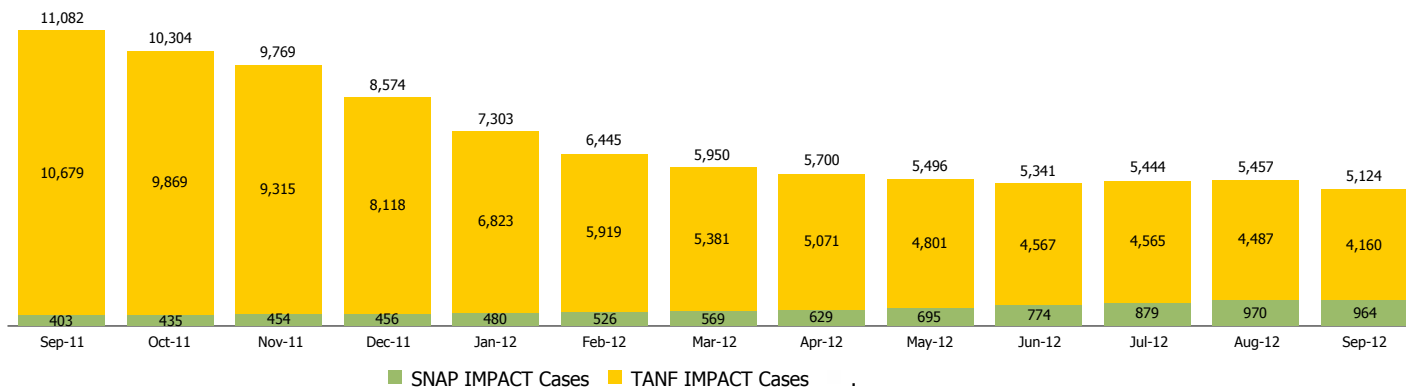
Reporting Month: September 2012

Location: Statewide

INDIANA MANPOWER PLACEMENT AND COMPREHENSIVE TRAINING (IMPACT)

	September 2012	August 2012	September 2011	Annual Change
Number of IMPACT cases	5,124	5,457	11,082	-53.76%
Number of TANF IMPACT Cases	4,160	4,487	10,679	-61.05%
Number of SNAP IMPACT Cases	964	970	403	139.21%
Total number of adults employed	374	456	852	-56.10%
Number of TANF IMPACT adults employed	305	389	778	-60.80%
Number of SNAP IMPACT adults employed	69	67	74	-6.76%
Total number of adults ineligible due to employment	1,674	1,505	1,872	-10.58%
Number of TANF adults ineligible due to employment	31	29	55	-43.64%
Number of SNAP adults ineligible due to employment	1,643	1,476	1,817	-9.58%

IMPACT Caseloads
(SNAP, TANF, Total Caseload)



Notes:

The methodology used for counting the number of TANF IMPACT cases changed in June 2010 to show all individuals referred to IMPACT for services.

Beginning with May 2010 the SNAP IMPACT program became a voluntary program. This change resulted in a substantial reduction in the number of IMPACT cases.



DIVISION OF FAMILY RESOURCES

Monthly Management Report

Reporting Month: September 2012

Location: Statewide

CHILD CARE

	September 2012	August 2012	September 2011	Annual Change
Total Subsidized Child Care Payments	\$11,711,561	\$12,401,722	\$10,116,454	15.77%
Total Number of CCDF Children	33,150	32,714	29,385	12.81%
Total Number of licensed Child Care Homes	2,841	2,857	2,964	-4.15%
Licensed Capacity of Child Care Homes	35,631	35,854	37,106	-3.98%
Total Number of Licensed CC Centers	591	597	601	-1.66%
Licensed Capacity of CC Centers	64,070	64,454	64,955	-1.36%
Total Number of Registered Ministries (Capacity not Regulated)	712	721	743	-4.17%