



DIVISION OF FAMILY RESOURCES

Monthly Management Report October 2013

State of Indiana

Michael R. Pence
Governor

Family and Social Services Administration

Debra F. Minott
Secretary

Division of Family Resources

Lance Rhodes
Director

For questions regarding data on this report contact:
office.Communications@fssa.IN.gov



State of Indiana

Published February 2014



DIVISION OF FAMILY RESOURCES

Monthly Management Report

Reporting Month: October 2013

Location: Statewide

TEMPORARY ASSISTANCE FOR NEEDY FAMILIES (TANF)

Child-Only and One-Parent Families	October 2013	September 2013	October 2012	Annual Change
Number of families receiving TANF Grants	11,057	11,043	13,762	-19.66%
Total number of grant recipients	24,275	24,204	31,591	-23.16%
Number of adult grant recipients	4,586	4,588	6,822	-32.78%
Number of child grant recipients	19,689	19,616	24,769	-20.51%
Total payments	\$2,074,764	\$2,048,391	\$2,556,467	-18.84%
Average payment per case	\$187.64	\$185.49	\$185.76	1.01%
Average payment per recipient	\$85.47	\$84.63	\$80.92	5.62%
Number of cases with benefits reduced to zero	469	491	698	-32.81%
Number of recipients with benefits reduced to zero	1,059	1,127	1,649	-35.78%
Number of adult recipients with benefit reduced to zero	270	282	487	-44.56%
Number of child recipients with benefit reduced to zero	789	845	1,162	-32.10%

Two-Parent Families	October 2013	September 2013	October 2012	Annual Change
Number of families receiving TANF Grants	728	760	984	-26.02%
Total number of grant recipients	3,001	3,121	3,951	-24.04%
Number of adult grant recipients	1,161	1,220	1,556	-25.39%
Number of child grant recipients	1,840	1,901	2,395	-23.17%
Total payments	\$153,115	\$159,060	\$210,396	-27.23%
Average payment per case	\$210.32	\$209.29	\$213.82	-1.63%
Average payment per recipient	\$51.02	\$50.96	\$53.25	-4.19%
Number of cases with benefits reduced to zero	32	30	38	-15.79%
Number of recipients with benefits reduced to zero	117	111	161	-27.33%
Number of adult recipients with benefit reduced to zero	48	47	57	-15.79%
Number of child recipients with benefit reduced to zero	69	64	104	-33.65%



DIVISION OF FAMILY RESOURCES

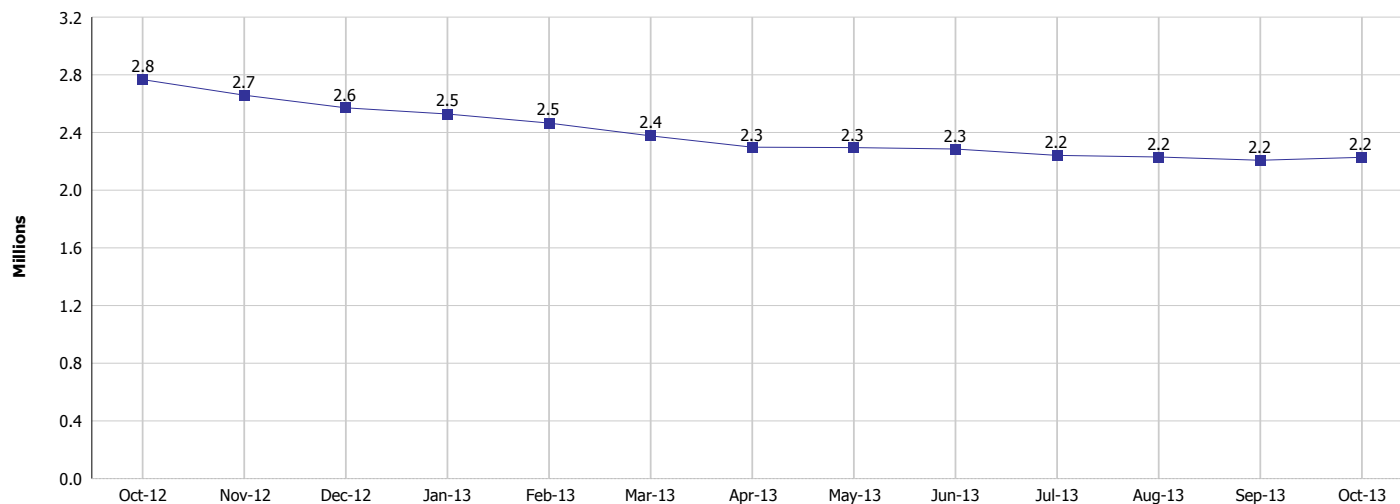
Monthly Management Report

Reporting Month: October 2013

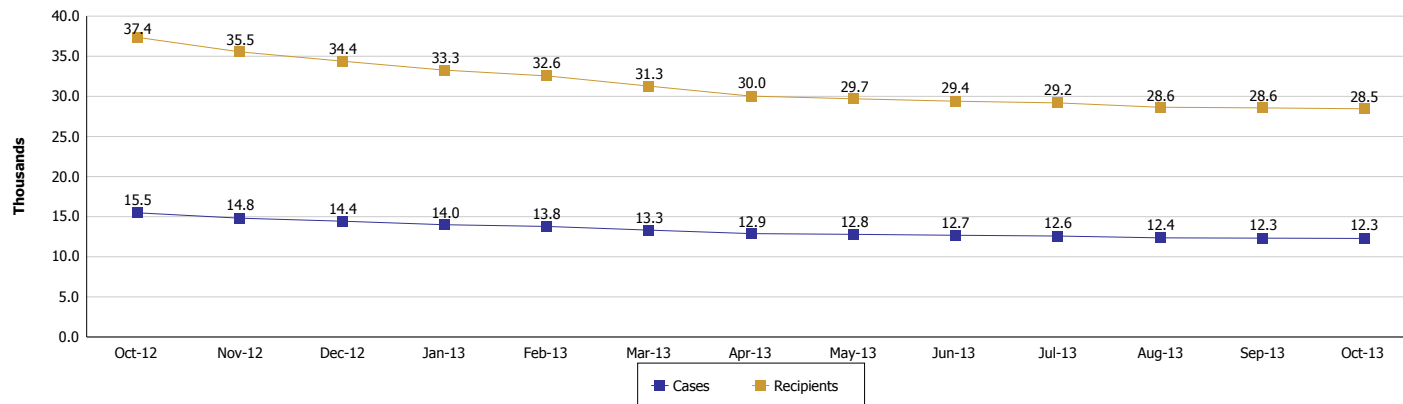
Location: Statewide

TEMPORARY ASSISTANCE FOR NEEDY FAMILIES (TANF)

TANF Cash Assistance
(TANF Regular and TANF UP)



TANF Cases and Recipients
(TANF Regular and TANF UP)





DIVISION OF FAMILY RESOURCES

Monthly Management Report

Reporting Month: October 2013

Location: Statewide

SUPPLEMENTAL NUTRITION ASSISTANCE PROGRAM (SNAP)

	October 2013	September 2013	October 2012	Annual Change
Total issuance	\$121,835,426	\$121,989,548	\$122,926,144	-0.89%
Number of households receiving SNAP benefits	418,623	418,979	412,794	1.41%
Number of recipients	926,238	928,662	925,680	0.06%
Average issuance per household	\$291.04	\$291.16	\$297.79	-2.27%
Average issuance per recipient	\$131.54	\$131.36	\$132.80	-0.95%

SNAP ERROR RATES

	June 2013	May 2013	April 2013	Cumulative FFY 2012
FFY Cumulative Positive Error Rate	3.74%	3.73%	4.00%	2.90%
Monthly Positive Error Rate	3.85%	1.69%	3.03%	NA
FFY Cumulative Negative Error Rate	18.90%	19.26%	19.95%	17.40%
Monthly Negative Error Rate	15.69%	14.29%	15.25%	NA

Notes:

Reporting periods for SNAP Error Rates reflect the review period and Federal submission deadline. The month reported above is the month in which an action was taken included in the review sample.

Positive actions are those which produced an issuance of benefits to a household. Negative actions are those which closed or denied benefits to a household.

Error Rate data is reported by the state before the federal agency has accepted and finalized the results. This rate is subject to revision based upon: completion and submission of outstanding reviews; final review corrections; and completion of previously dropped reviews. Monthly numbers are taken from end-of-month totals. The error status of cases may be changed by the State or Federal Review process, which would cause a change that might not be reflected in the previous monthly numbers.



DIVISION OF FAMILY RESOURCES

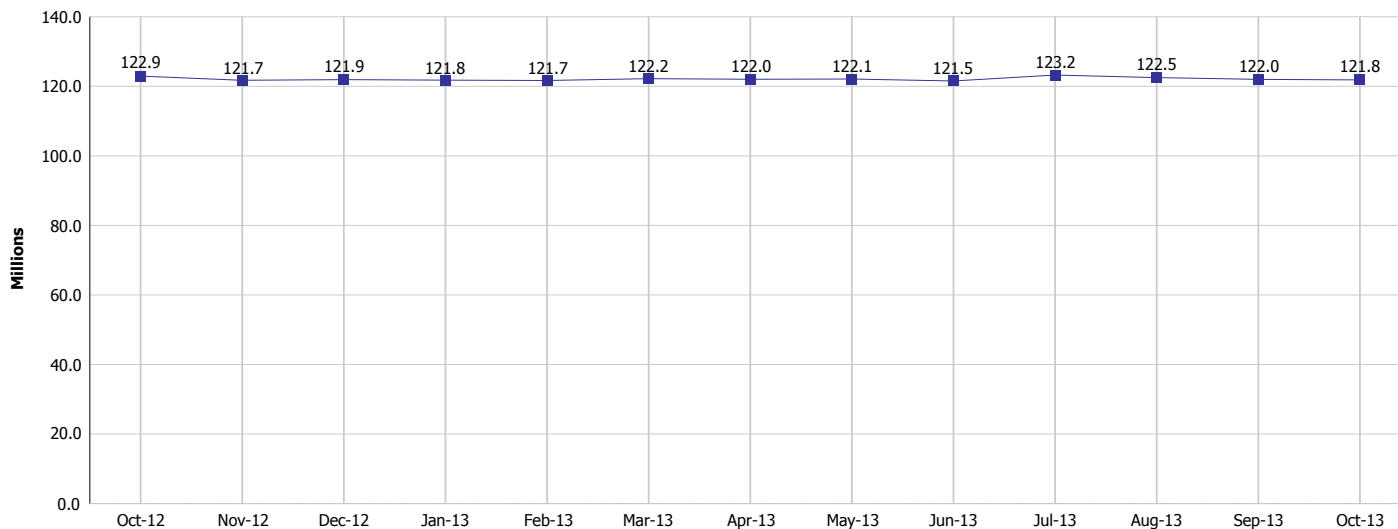
Monthly Management Report

Reporting Month: October 2013

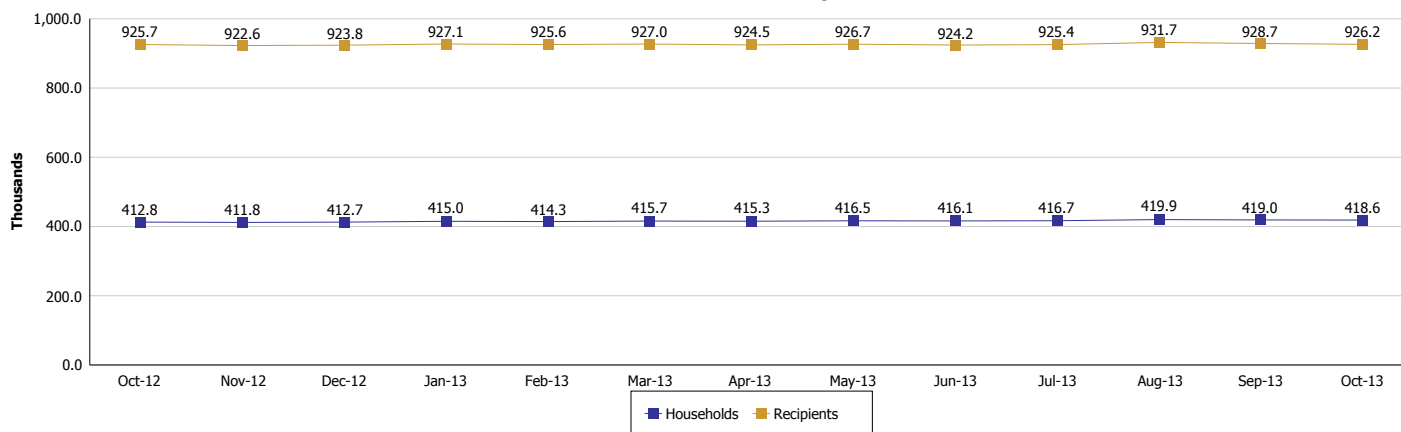
Location: Statewide

SUPPLEMENTAL NUTRITION ASSISTANCE PROGRAM (SNAP)

SNAP Issuance



SNAP Households and Recipients





DIVISION OF FAMILY RESOURCES

Monthly Management Report

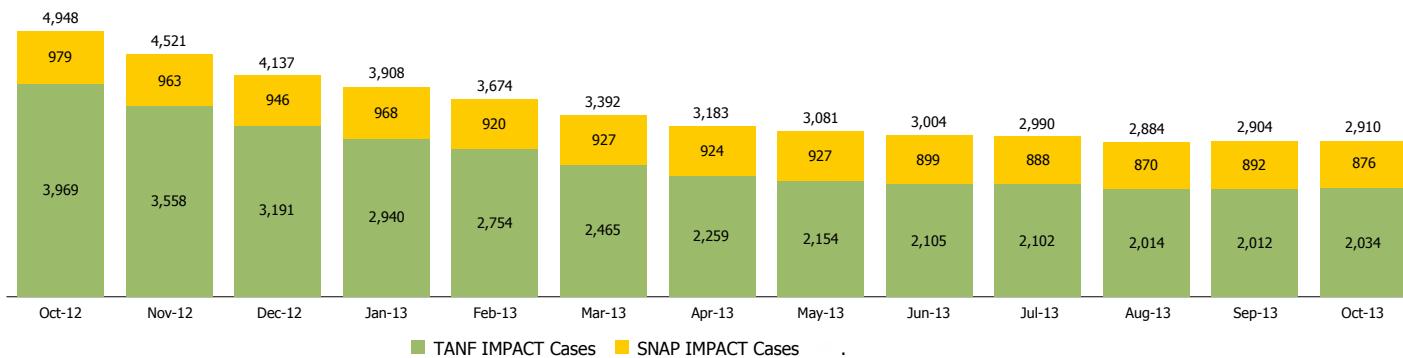
Reporting Month: October 2013

Location: Statewide

INDIANA MANPOWER PLACEMENT AND COMPREHENSIVE TRAINING (IMPACT)

	October 2013	September 2013	October 2012	Annual Change
Number of IMPACT cases	2,910	2,904	4,948	-41.19%
Number of TANF IMPACT Cases	2,034	2,012	3,969	-48.75%
Number of SNAP IMPACT Cases	876	892	979	-10.52%
Total number of adults employed	292	262	435	-32.87%
Number of TANF IMPACT adults employed	214	198	364	-41.21%
Number of SNAP IMPACT adults employed	78	64	71	9.86%
Total number of adults ineligible due to employment	2,003	1,822	1,908	4.98%
Number of TANF adults ineligible due to employment	35	20	23	52.17%
Number of SNAP adults ineligible due to employment	1,968	1,802	1,885	4.40%

IMPACT Caseloads
(SNAP, TANF, Total Caseload)





DIVISION OF FAMILY RESOURCES

Monthly Management Report

Reporting Month: October 2013

Location: Statewide

CHILD CARE

	October 2013	September 2013	October 2012	Annual Change
Total Subsidized Child Care Payments	\$13,484,665	\$13,008,888	\$12,261,442	9.98%
Total Number of CCDF Children	38,099	36,754	34,754	9.62%
Total Number of licensed Child Care Homes	2,798	2,818	2,858	-2.10%
Licensed Capacity of Child Care Homes	35,595	35,755	35,929	-0.93%
Total Number of Licensed CC Centers	589	592	594	-0.84%
Licensed Capacity of CC Centers	64,183	64,440	64,404	-0.34%
Total Number of Registered Ministries (Capacity not Regulated)	663	659	710	-6.62%