



DIVISION OF FAMILY RESOURCES

Monthly Management Report November 2018

State of Indiana

Eric Holcomb
Governor

Family and Social Services Administration

Jennifer Walthall, M.D.
Secretary

Division of Family Resources

Adrienne Shields
Director

For questions regarding data on this report contact:
office.Communications@fssa.IN.gov



State of Indiana

Published December 2018



DIVISION OF FAMILY RESOURCES

Monthly Management Report

Reporting Month: November 2018

Location: Statewide

TEMPORARY ASSISTANCE FOR NEEDY FAMILIES (TANF)

Child-Only and One-Parent Families	Nov 30, 2018	October 2018	November 2017	Annual Change
Number of families receiving TANF Grants	5,853	5,783	6,692	-12.54%
Total number of grant recipients	12,235	12,090	14,140	-13.47%
Number of adult grant recipients	1,717	1,667	2,082	-17.53%
Number of child grant recipients	10,518	10,423	12,058	-12.77%
Total payments	\$1,131,430	\$1,132,466	\$1,330,818	-14.98%
Average payment per case	\$193.31	\$195.83	\$198.87	-2.80%
Average payment per recipient	\$92.47	\$93.67	\$94.12	-1.75%
Number of cases with benefits reduced to zero	71	176	109	-34.86%
Number of recipients with benefits reduced to zero	152	453	220	-30.91%
Number of adult recipients with benefit reduced to zero	36	110	52	-30.77%
Number of child recipients with benefit reduced to zero	116	343	168	-30.95%

Two-Parent Families	Nov 30, 2018	October 2018	November 2017	Annual Change
Number of families receiving TANF Grants	228	229	304	-25.00%
Total number of grant recipients	885	866	1,212	-26.98%
Number of adult grant recipients	307	306	429	-28.44%
Number of child grant recipients	578	560	783	-26.18%
Total payments	\$48,752	\$45,731	\$64,431	-24.33%
Average payment per case	\$213.82	\$199.70	\$211.94	0.89%
Average payment per recipient	\$55.09	\$52.81	\$53.16	3.62%
Number of cases with benefits reduced to zero	4	9	3	33.33%
Number of recipients with benefits reduced to zero	18	37	11	63.64%
Number of adult recipients with benefit reduced to zero	6	13	4	50.00%
Number of child recipients with benefit reduced to zero	12	24	7	71.43%

Note:

All data July 2014 and following will be broken out according to the new DFR region structure effective July 1 2014.

Source:



DIVISION OF FAMILY RESOURCES

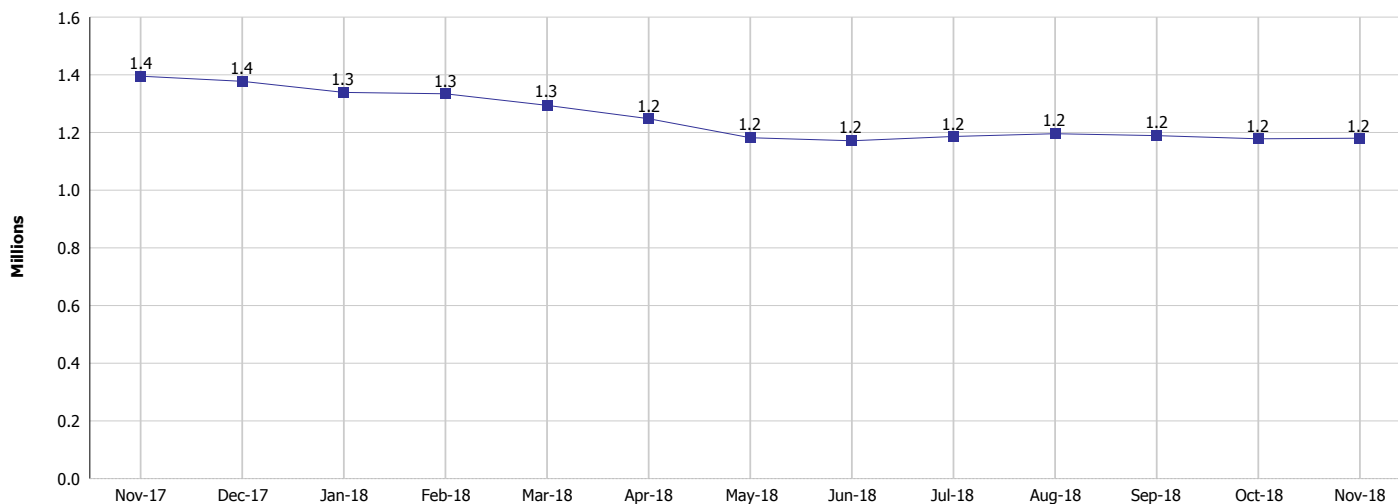
Monthly Management Report

Reporting Month: November 2018

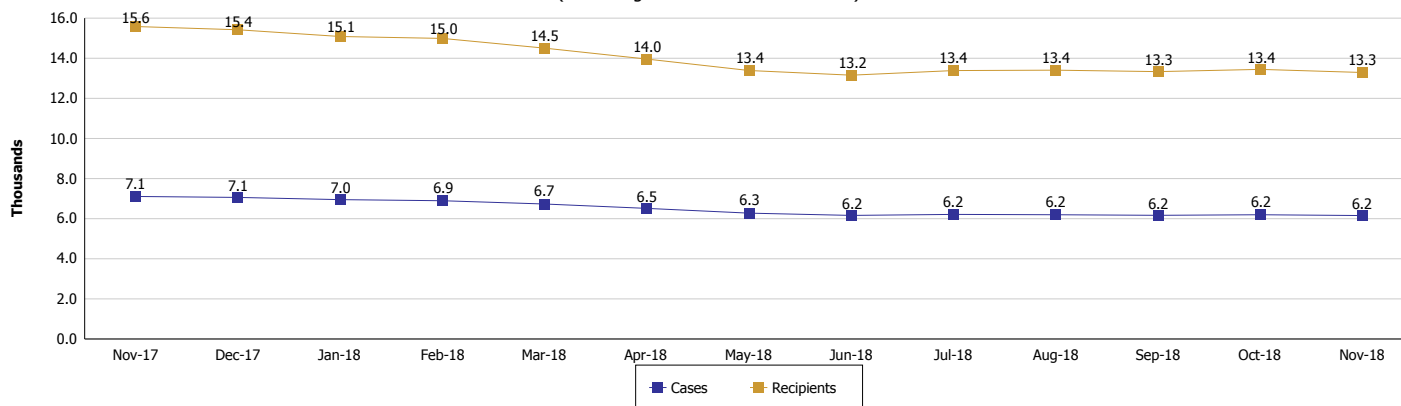
Location: Statewide

TEMPORARY ASSISTANCE FOR NEEDY FAMILIES (TANF)

TANF Cash Assistance
(TANF Regular and TANF Two-Parent)



TANF Cases and Recipients
(TANF Regular and TANF Two-Parent)



Note:

All data July 2014 and following will be broken out according to the new DFR region structure effective July 1 2014.



DIVISION OF FAMILY RESOURCES

Monthly Management Report

Reporting Month: November 2018

Location: Statewide

SUPPLEMENTAL NUTRITION ASSISTANCE PROGRAM (SNAP)

	November 2018	October 2018	November 2017	Annual Change
Total issuance	\$69,729,472	\$71,548,588	\$74,607,103	-6.54%
Number of households receiving SNAP benefits	265,003	268,996	282,828	-6.30%
Number of recipients	590,828	599,602	636,497	-7.18%
Average issuance per household	\$263.13	\$265.98	\$263.79	-0.25%
Average issuance per recipient	\$118.02	\$119.33	\$117.22	0.69%

Note:

All data July 2014 and following will be broken out according to the new DFR region structure effective July 1 2014.

SNAP ERROR RATES

	July 2018	June 2018	May 2018	Cumulative FFY 2017
FFY Cumulative Positive Error Rate	5.70%	5.26%	4.96%	9.19%
Monthly Positive Error Rate	9.19%	7.60%	4.51%	NA
FFY Cumulative Negative Error Rate	39.62%	40.31%	41.29%	30.52%
Monthly Negative Error Rate	33.33%	32.14%	31.03%	NA

Note:

All data July 2014 and following will be broken out according to the new DFR region structure effective July 1 2014.

Notes:

Reporting periods for SNAP Error Rates reflect the review period and Federal submission deadline. The month reported above is the month in which an action was taken included in the review sample.

Positive actions are those which produced an issuance of benefits to a household. Negative actions are those which closed or denied benefits to a household.

Error Rate data is reported by the state before the federal agency has accepted and finalized the results. This rate is subject to revision based upon: completion and submission of outstanding reviews; final review corrections; and completion of previously dropped reviews. Monthly numbers are taken from end-of-month totals. The error status of cases may be changed by the State or Federal Review process, which would cause a change that might not be reflected in the previous monthly numbers.



DIVISION OF FAMILY RESOURCES

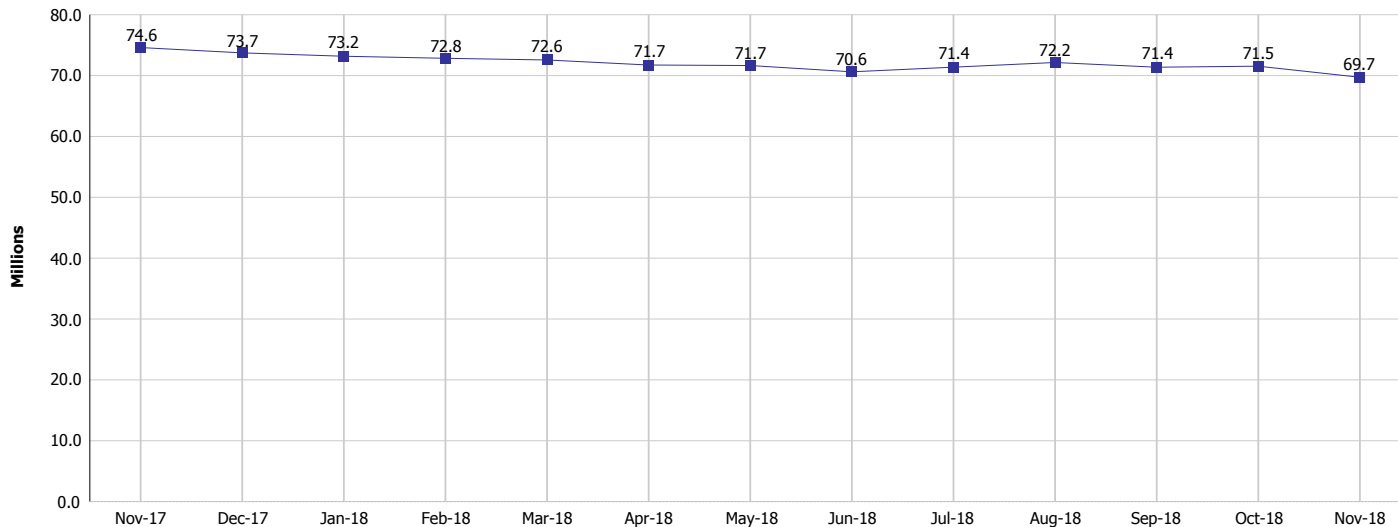
Monthly Management Report

Reporting Month: November 2018

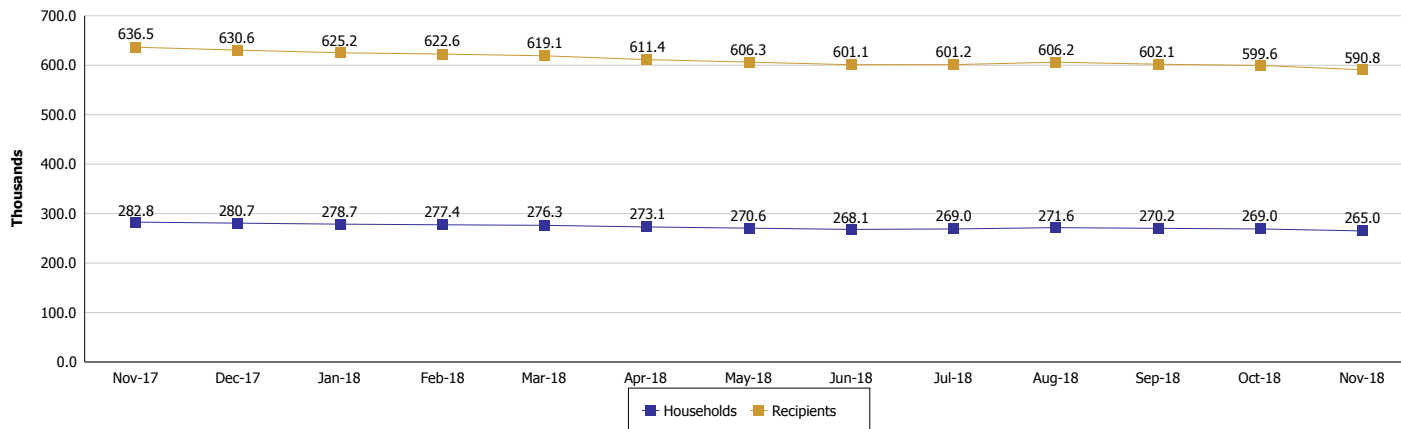
Location: Statewide

SUPPLEMENTAL NUTRITION ASSISTANCE PROGRAM (SNAP)

SNAP Issuance



SNAP Households and Recipients



Note:

All data July 2014 and following will be broken out according to the new DFR region structure effective July 1 2014.



DIVISION OF FAMILY RESOURCES

Monthly Management Report

Reporting Month: November 2018

Location: Statewide

HIP 2.0 and SNAP

	November 2018	October 2018	November 2017	Annual Change
Total HIP 2.0 Members	424,599	425,692	448,202	-5.27%
HIP Members also SNAP Recipients	142,591	144,577	149,748	-4.78%
Percentage HIP Members SNAP Recipients	33.6%	34.0%	33.4%	-4.93%
HIP Members SNAP ABAWDs	5,136	5,483	4,077	25.97%
Percentage HIP Members SNAP ABAWDs	1.2%	1.3%	0.9%	-4.93%

Note:

All data July 2014 and following will be broken out according to the new DFR region structure effective July 1 2014.



DIVISION OF FAMILY RESOURCES

Monthly Management Report

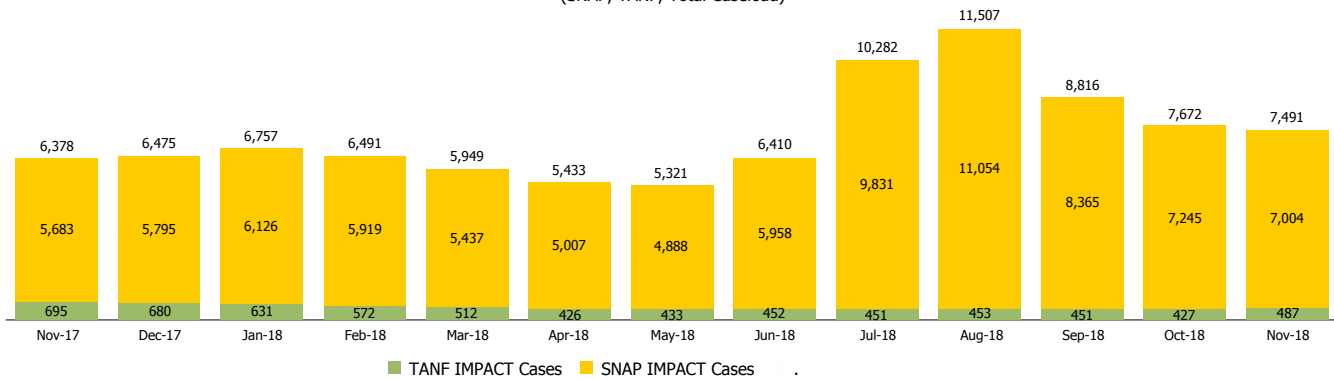
Reporting Month: November 2018

Location: Statewide

INDIANA MANPOWER PLACEMENT AND COMPREHENSIVE TRAINING (IMPACT)

	November 2018	October 2018	November 2017	Annual Change
Number of IMPACT cases	7,491	7,672	6,378	17.45%
Number of TANF IMPACT adults	487	427	695	-29.93%
Number of SNAP IMPACT Cases	7,004	7,245	5,683	23.24%
Total number of adults employed	1,177	1,596	1,136	3.61%
Number of TANF IMPACT adults newly employed (within past 30 days)	90	127	121	-25.62%
Number of SNAP IMPACT adults employed	1,087	1,469	1,015	7.09%
Total number of adults ineligible due to employment	6,299	5,719	6,233	1.06%
Number of TANF adults ineligible due to employment	26	11	17	52.94%
Number of SNAP adults ineligible due to employment	6,273	5,708	6,216	0.92%

IMPACT Caseloads
(SNAP, TANF, Total Caseload)



Note:

All data July 2014 and following will be broken out according to the new DFR region structure effective July 1 2014.