



## DIVISION OF FAMILY RESOURCES

# Monthly Management Report March 2012

**State of Indiana**  
Mitchell E. Daniels, Jr.  
Governor

**Family and Social Services  
Administration**  
Michael Gargano  
Secretary

**Division of Family  
Resources**  
Mike Carr  
Interim Director

For questions regarding data on this report contact:  
[office.Communications@fssa.IN.gov](mailto:office.Communications@fssa.IN.gov)



## State of Indiana

Published April 2012



## DIVISION OF FAMILY RESOURCES

### Monthly Management Report

Reporting Month: March 2012

Location: Statewide

#### TEMPORARY ASSISTANCE FOR NEEDY FAMILIES (TANF)

<b>Child-Only and One-Parent Families</b>	<b>March 2012</b>	<b>February 2012</b>	<b>March 2011</b>	<b>Annual Change</b>
Number of families receiving TANF Grants	15,663	16,447	25,228	-37.91%
Total number of grant recipients	36,955	39,133	62,895	-41.24%
Number of adult grant recipients	8,597	9,262	17,864	-51.88%
Number of child grant recipients	28,358	29,871	45,031	-37.03%
Total payments	\$2,897,730	\$3,057,310	\$5,163,337	-43.88%
Average payment per case	\$185.00	\$185.89	\$204.67	-9.61%
Average payment per recipient	\$78.41	\$78.13	\$82.09	-4.49%
Number of cases with benefits reduced to zero	679	714	2,324	-70.78%
Number of recipients with benefits reduced to zero	1,579	1,677	6,339	-75.09%
Number of adult recipients with benefit reduced to zero	460	505	2,096	-78.05%
Number of child recipients with benefit reduced to zero	1,119	1,172	4,243	-73.63%

<b>Two-Parent Families</b>	<b>March 2012</b>	<b>February 2012</b>	<b>March 2011</b>	<b>Annual Change</b>
Number of families receiving TANF Grants	1,160	1,227	3,018	-61.56%
Total number of grant recipients	4,720	4,985	11,958	-60.53%
Number of adult grant recipients	1,866	1,982	5,329	-64.98%
Number of child grant recipients	2,854	3,003	6,629	-56.95%
Total payments	\$248,617	\$265,768	\$802,271	-69.01%
Average payment per case	\$214.32	\$216.60	\$265.83	-19.37%
Average payment per recipient	\$52.67	\$53.31	\$67.09	-21.49%
Number of cases with benefits reduced to zero	50	62	397	-87.41%
Number of recipients with benefits reduced to zero	192	236	1,678	-88.56%
Number of adult recipients with benefit reduced to zero	76	99	742	-89.76%
Number of child recipients with benefit reduced to zero	116	137	936	-87.61%



## DIVISION OF FAMILY RESOURCES

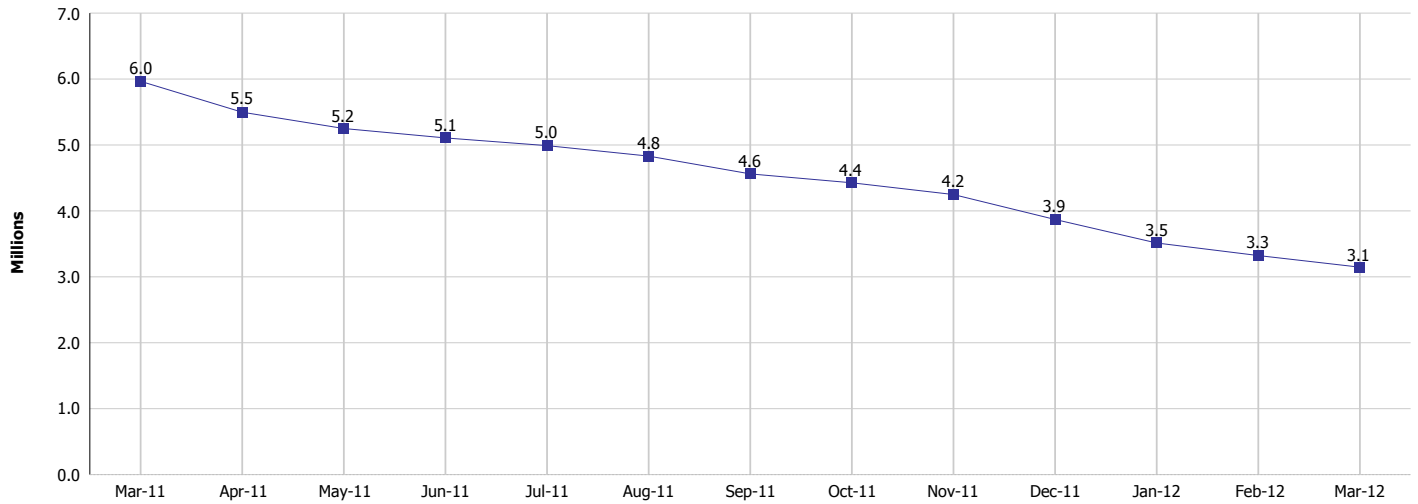
### Monthly Management Report

Reporting Month: March 2012

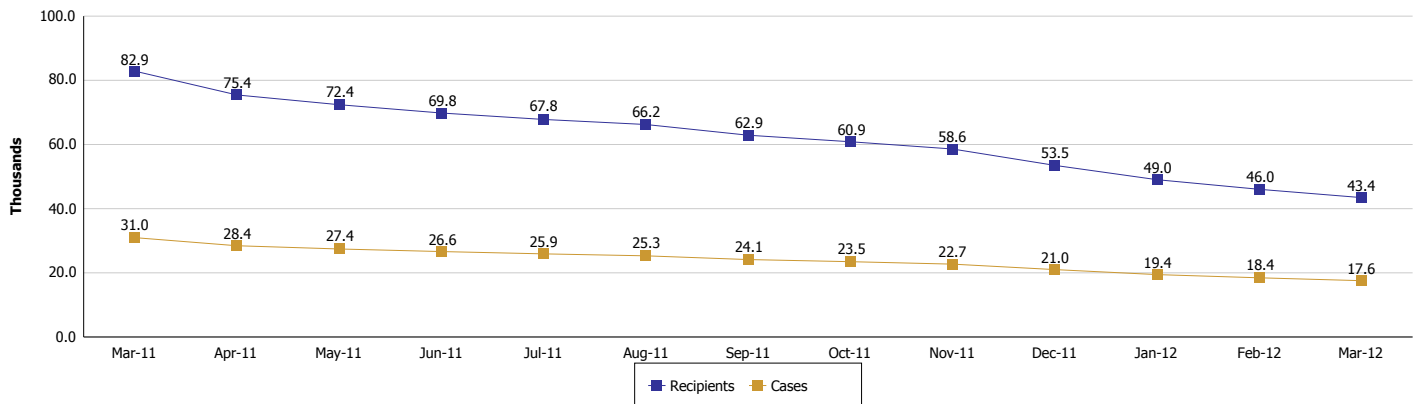
Location: Statewide

#### TEMPORARY ASSISTANCE FOR NEEDY FAMILIES (TANF)

**TANF Cash Assistance**  
(TANF Regular and TANF UP)



**TANF Cases and Recipients**  
(TANF Regular and TANF UP)





## DIVISION OF FAMILY RESOURCES

### Monthly Management Report

Reporting Month: March 2012

Location: Statewide

#### SUPPLEMENTAL NUTRITION ASSISTANCE PROGRAM (SNAP)

	March 2012	February 2012	March 2011	Annual Change
Total issuance	\$119,129,622	\$118,953,211	\$116,084,967	2.62%
Number of households receiving SNAP benefits	400,183	399,141	381,346	4.94%
Number of recipients	906,899	906,637	878,397	3.24%
Average issuance per household	\$297.69	\$298.02	\$304.41	-2.21%
Average issuance per recipient	\$131.36	\$131.20	\$132.16	-0.60%

#### SNAP ERROR RATES

	November 2011	October 2011	Cumulative FFY 2010
FFY Cumulative Positive Error Rate	4.63%	4.22%	2.48%
Monthly Positive Error Rate	5.03%	4.22%	NA
FFY Cumulative Negative Error Rate	1.59%	1.54%	2.69%
Monthly Negative Error Rate	1.64%	1.54%	NA

#### Notes:

Reporting periods for SNAP Error Rates reflect the review period and Federal submission deadline. The month reported above is the month in which an action was taken included in the review sample.

Positive actions are those which produced an issuance of benefits to a household. Negative actions are those which closed or denied benefits to a household.

Error Rate data is reported by the state before the federal agency has accepted and finalized the results. This rate is subject to revision. Monthly numbers are taken from the end of the month totals. Error status of cases may be changed by either State or Federal Review process, which would cause a change that might not be reflected in the previous monthly numbers.



# DIVISION OF FAMILY RESOURCES

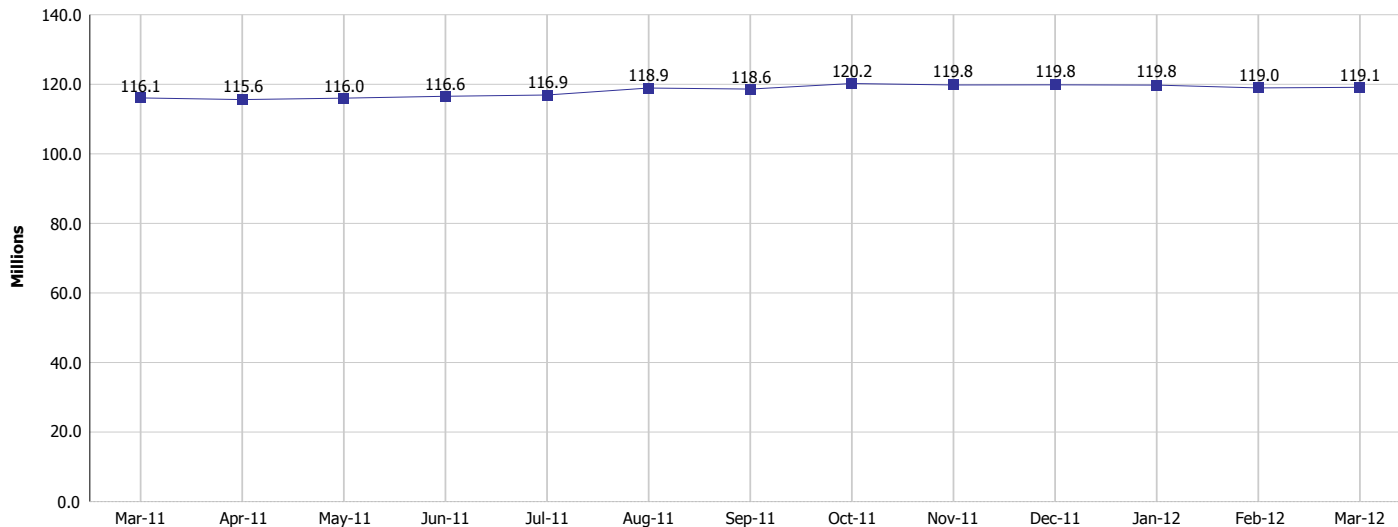
## Monthly Management Report

Reporting Month: March 2012

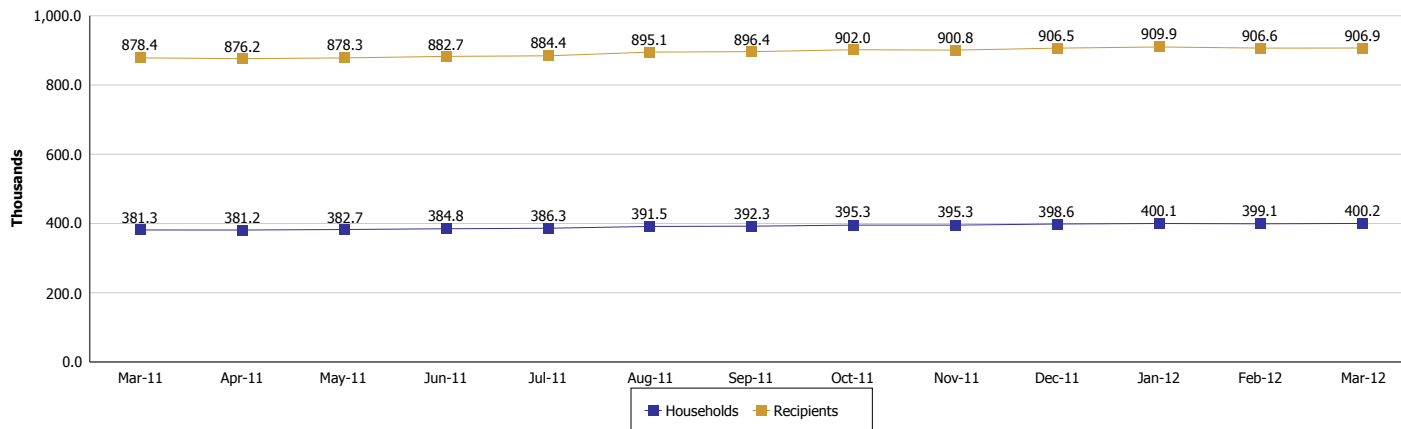
Location: Statewide

### SUPPLEMENTAL NUTRITION ASSISTANCE PROGRAM (SNAP)

#### SNAP Issuance



#### SNAP Households and Recipients





## DIVISION OF FAMILY RESOURCES

### Monthly Management Report

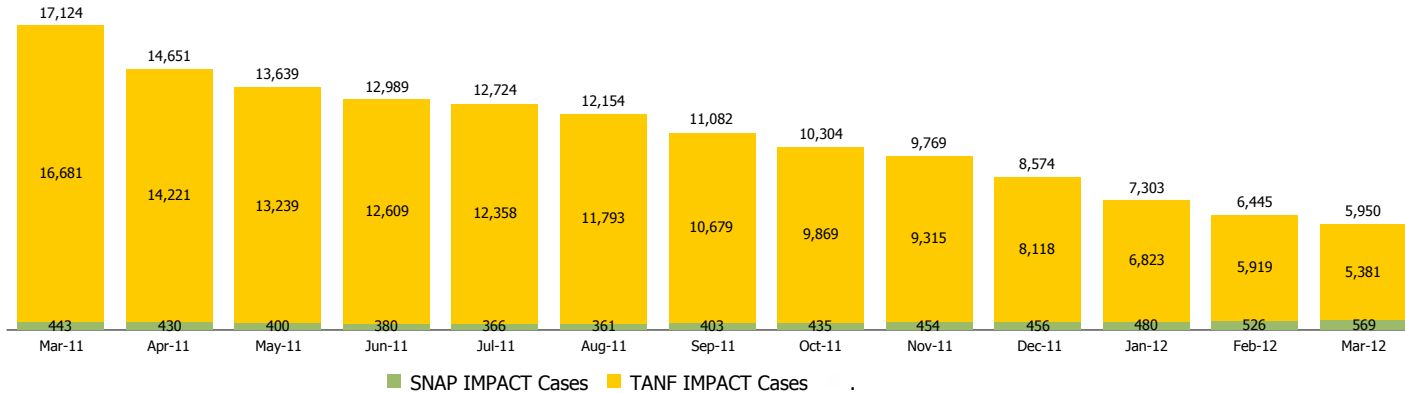
Reporting Month: March 2012

Location: Statewide

#### INDIANA MANPOWER PLACEMENT AND COMPREHENSIVE TRAINING (IMPACT)

	March 2012	February 2012	March 2011	Annual Change
Number of IMPACT cases	5,950	6,445	17,124	-65.25%
Number of TANF IMPACT Cases	5,381	5,919	16,681	-67.74%
Number of SNAP IMPACT Cases	569	526	443	28.44%
Total number of adults employed	418	351	1,099	-61.97%
Number of TANF IMPACT adults employed	358	306	1,026	-65.11%
Number of SNAP IMPACT adults employed	60	45	73	-17.81%
Total number of adults ineligible due to employment	1,750	1,621	1,480	18.24%
Number of TANF adults ineligible due to employment	38	40	74	-48.65%
Number of SNAP adults ineligible due to employment	1,712	1,581	1,406	21.76%

**IMPACT Caseloads**  
(SNAP, TANF, Total Caseload)



**Notes:**

The methodology used for counting the number of TANF IMPACT cases changed in June 2010 to show all individuals referred to IMPACT for services.

Beginning with May 2010 the SNAP IMPACT program became a voluntary program. This change resulted in a substantial reduction in the number of IMPACT cases.



## DIVISION OF FAMILY RESOURCES

### Monthly Management Report

Reporting Month: March 2012

Location: Statewide

#### CHILD CARE

	March 2012	February 2012	March 2011	Annual Change
Total Subsidized Child Care Payments	\$12,644,784	\$12,085,613	\$11,423,054	10.70%
Total Number of CCDF Children	34,202	34,146	31,350	9.10%
Total Number of licensed Child Care Homes	2,887	2,884	3,005	-3.93%
Licensed Capacity of Child Care Homes	36,197	36,214	37,452	-3.35%
Total Number of Licensed CC Centers	603	602	608	-0.82%
Licensed Capacity of CC Centers	65,369	65,230	65,493	-0.19%
Total Number of Registered Ministries (Capacity not Regulated)	724	721	737	-1.76%