



## DIVISION OF FAMILY RESOURCES

# Monthly Management Report December 2016

### State of Indiana

Michael R. Pence  
Governor

### Family and Social Services Administration

John J. Wernert, M.D.  
Secretary

### Division of Family Resources

Adrienne Shields  
Director

For questions regarding data on this report contact:  
[office.Communications@fssa.IN.gov](mailto:office.Communications@fssa.IN.gov)



## State of Indiana

Published January 2017



## DIVISION OF FAMILY RESOURCES

### Monthly Management Report

Reporting Month: December 2016

Location: Statewide

#### TEMPORARY ASSISTANCE FOR NEEDY FAMILIES (TANF)

Child-Only and One-Parent Families	Dec 31, 2016	November 2016	December 2015	Annual Change
Number of families receiving TANF Grants	7,469	7,530	8,121	-8.03%
Total number of grant recipients	15,585	15,749	17,170	-9.23%
Number of adult grant recipients	2,318	2,352	2,686	-13.70%
Number of child grant recipients	13,267	13,397	14,484	-8.40%
Total payments	\$1,434,343	\$1,451,846	\$1,532,268	-6.39%
Average payment per case	\$192.04	\$192.81	\$188.68	1.78%
Average payment per recipient	\$92.03	\$92.19	\$89.24	3.13%
Number of cases with benefits reduced to zero	122	166	245	-50.20%
Number of recipients with benefits reduced to zero	248	371	520	-52.31%
Number of adult recipients with benefit reduced to zero	60	88	123	-51.22%
Number of child recipients with benefit reduced to zero	188	283	397	-52.64%

Two-Parent Families	Dec 31, 2016	November 2016	December 2015	Annual Change
Number of families receiving TANF Grants	464	466	516	-10.08%
Total number of grant recipients	1,989	1,988	2,060	-3.45%
Number of adult grant recipients	746	748	808	-7.67%
Number of child grant recipients	1,243	1,240	1,252	-0.72%
Total payments	\$113,497	\$116,994	\$116,997	-2.99%
Average payment per case	\$244.61	\$251.06	\$226.74	7.88%
Average payment per recipient	\$57.06	\$58.85	\$56.79	0.47%
Number of cases with benefits reduced to zero	11	19	19	-42.11%
Number of recipients with benefits reduced to zero	32	69	82	-60.98%
Number of adult recipients with benefit reduced to zero	14	30	30	-53.33%
Number of child recipients with benefit reduced to zero	18	39	52	-65.38%

**Note:**

All data July 2014 and following will be broken out according to the new DFR region structure effective July 1 2014.

Source:



## DIVISION OF FAMILY RESOURCES

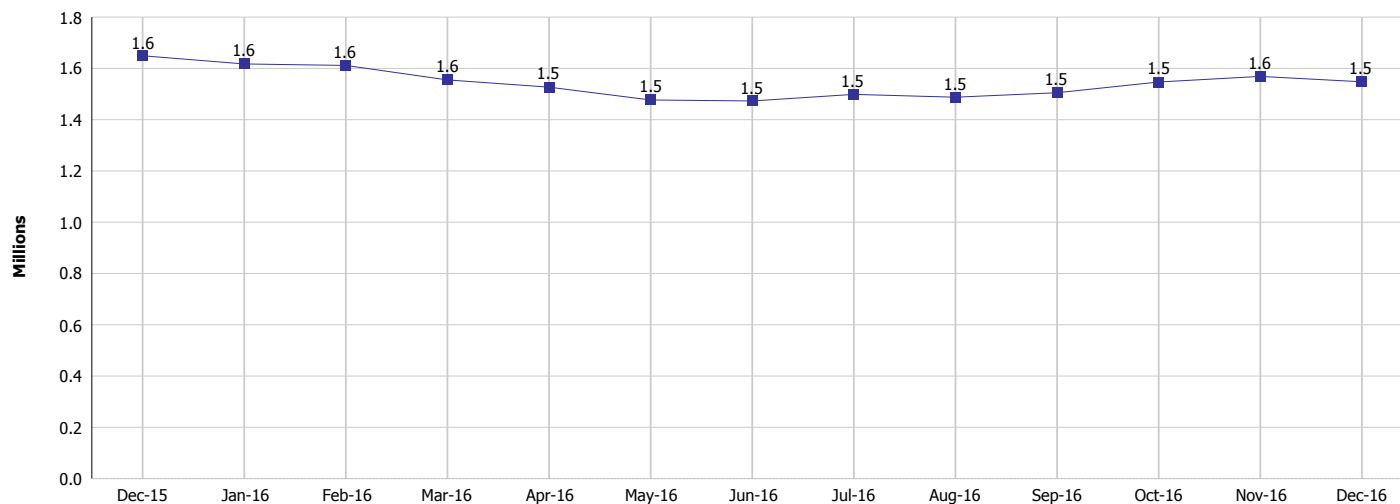
### Monthly Management Report

Reporting Month: December 2016

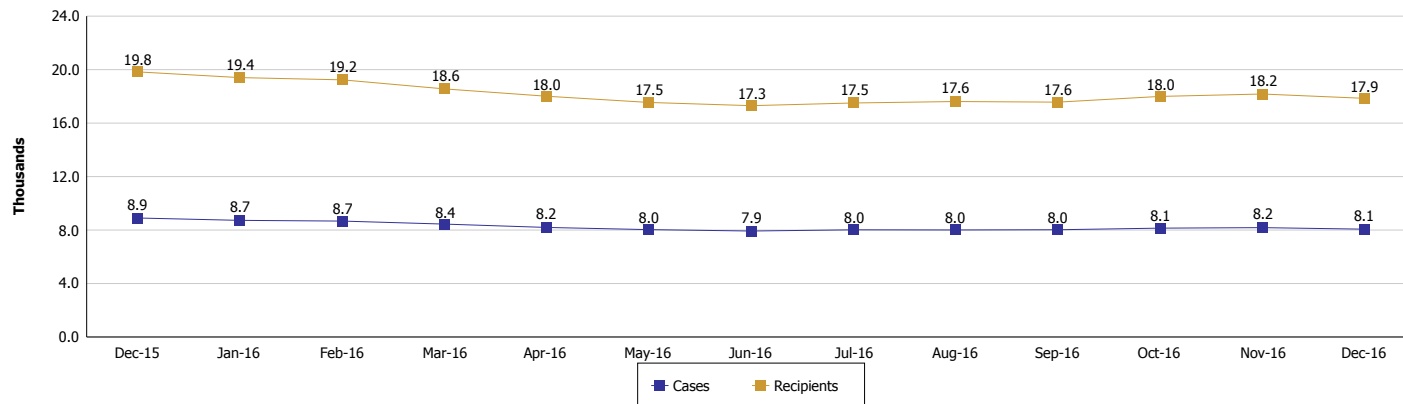
Location: Statewide

#### TEMPORARY ASSISTANCE FOR NEEDY FAMILIES (TANF)

**TANF Cash Assistance**  
(TANF Regular and TANF Two-Parent)



**TANF Cases and Recipients**  
(TANF Regular and TANF Two-Parent)



**Note:**

All data July 2014 and following will be broken out according to the new DFR region structure effective July 1 2014.



## DIVISION OF FAMILY RESOURCES

### Monthly Management Report

Reporting Month: December 2016

Location: Statewide

#### SUPPLEMENTAL NUTRITION ASSISTANCE PROGRAM (SNAP)

	December 2016	November 2016	December 2015	Annual Change
Total issuance	\$81,682,191	\$82,599,742	\$91,741,918	-10.97%
Number of households receiving SNAP benefits	305,550	307,756	336,072	-9.08%
Number of recipients	692,024	697,678	758,506	-8.76%
Average issuance per household	\$267.33	\$268.39	\$272.98	-2.07%
Average issuance per recipient	\$118.03	\$118.39	\$120.95	-2.41%

**Note:**

All data July 2014 and following will be broken out according to the new DFR region structure effective July 1 2014.

#### SNAP ERROR RATES

	August 2016	July 2016	June 2016	Cumulative FFY 2015
FFY Cumulative Positive Error Rate	6.81%	7.22%	6.65%	5.78%
Monthly Positive Error Rate	2.19%	11.55%	1.23%	NA
FFY Cumulative Negative Error Rate	26.80%	25.31%	25.04%	18.13%
Monthly Negative Error Rate	40.58%	27.87%	16.67%	NA

**Note:**

All data July 2014 and following will be broken out according to the new DFR region structure effective July 1 2014.

**Notes:**

Reporting periods for SNAP Error Rates reflect the review period and Federal submission deadline. The month reported above is the month in which an action was taken included in the review sample.

Positive actions are those which produced an issuance of benefits to a household. Negative actions are those which closed or denied benefits to a household.

Error Rate data is reported by the state before the federal agency has accepted and finalized the results. This rate is subject to revision based upon: completion and submission of outstanding reviews; final review corrections; and completion of previously dropped reviews. Monthly numbers are taken from end-of-month totals. The error status of cases may be changed by the State or Federal Review process, which would cause a change that might not be reflected in the previous monthly numbers.



# DIVISION OF FAMILY RESOURCES

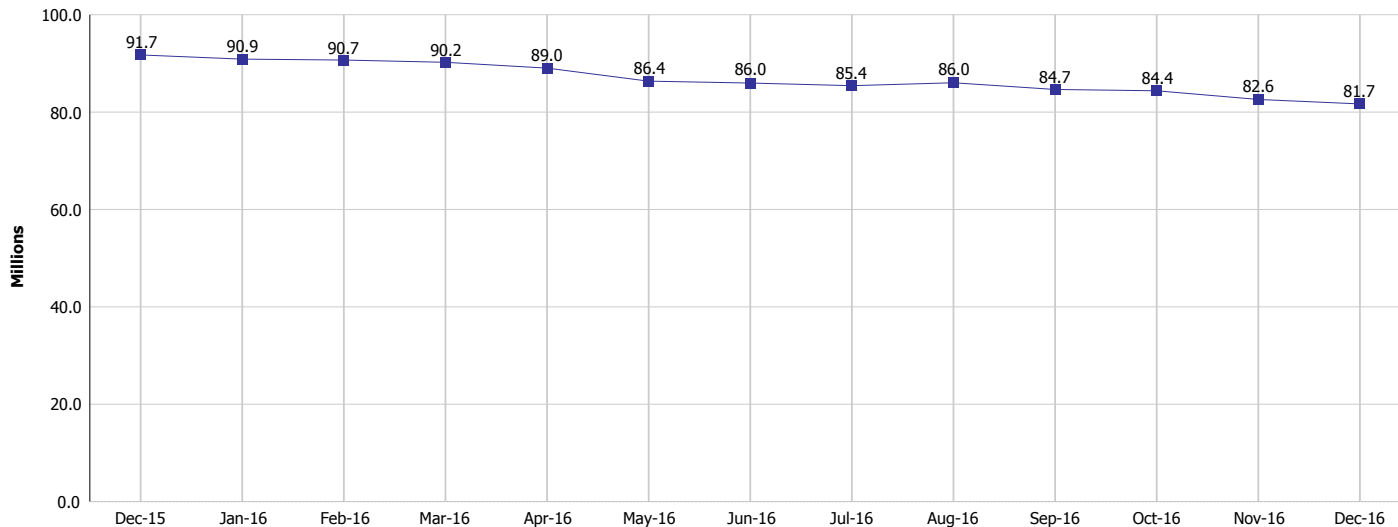
## Monthly Management Report

Reporting Month: December 2016

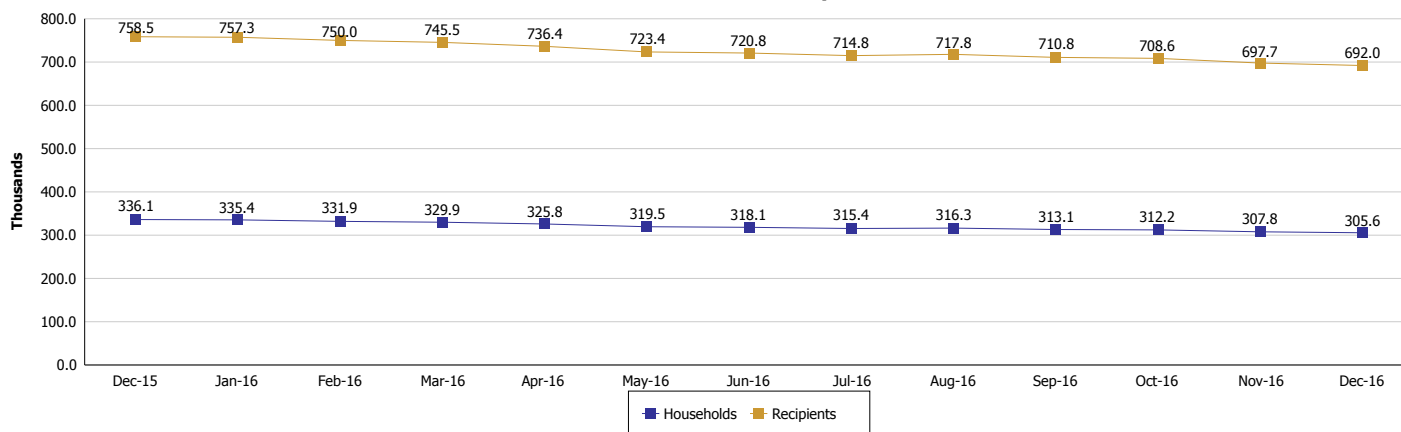
Location: Statewide

### SUPPLEMENTAL NUTRITION ASSISTANCE PROGRAM (SNAP)

#### SNAP Issuance



#### SNAP Households and Recipients



**Note:**

All data July 2014 and following will be broken out according to the new DFR region structure effective July 1 2014.



## DIVISION OF FAMILY RESOURCES

### Monthly Management Report

Reporting Month: December 2016

Location: Statewide

#### HIP 2.0 and SNAP

	December 2016	November 2016	December 2015	Annual Change
Total HIP 2.0 Members	428,382	427,557	366,973	16.73%
HIP Members also SNAP Recipients	159,281	162,001	165,191	-3.58%
Percentage HIP Members SNAP Recipients	37.2%	37.9%	45.0%	10.26%
HIP Members SNAP ABAWDs	5,043	5,292	5,381	-6.28%
Percentage HIP Members SNAP ABAWDs	1.2%	1.2%	1.5%	10.26%

**Note:**

All data July 2014 and following will be broken out according to the new DFR region structure effective July 1 2014.



## DIVISION OF FAMILY RESOURCES

### Monthly Management Report

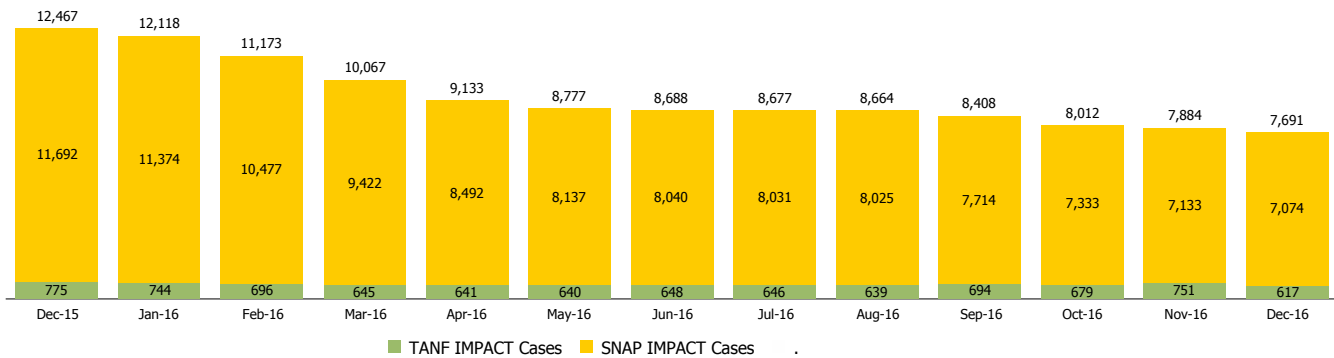
Reporting Month: December 2016

Location: Statewide

#### INDIANA MANPOWER PLACEMENT AND COMPREHENSIVE TRAINING (IMPACT)

	December 2016	November 2016	December 2015	Annual Change
Number of IMPACT cases	7,691	7,884	12,467	-38.31%
Number of TANF IMPACT adults	617	751	775	-20.39%
Number of SNAP IMPACT Cases	7,074	7,133	11,692	-39.50%
Total number of adults employed	1,205	1,307	1,573	-23.39%
Number of TANF IMPACT adults newly employed (within past 30 days)	121	109	117	3.42%
Number of SNAP IMPACT adults employed	1,084	1,198	1,456	-25.55%
Total number of adults ineligible due to employment	5,608	6,943	7,997	-29.87%
Number of TANF adults ineligible due to employment	25	23	29	-13.79%
Number of SNAP adults ineligible due to employment	5,583	6,920	7,968	-29.93%

**IMPACT Caseloads**  
(SNAP, TANF, Total Caseload)



**Note:**

All data July 2014 and following will be broken out according to the new DFR region structure effective July 1 2014.