



DIVISION OF FAMILY RESOURCES

Monthly Management Report August 2017

State of Indiana

Eric Holcomb
Governor

Family and Social Services Administration

Jennifer Walthall, M.D.
Secretary

Division of Family Resources

Adrienne Shields
Director

For questions regarding data on this report contact:
office.Communications@fssa.IN.gov



State of Indiana

Published September 2017



DIVISION OF FAMILY RESOURCES

Monthly Management Report

Reporting Month: August 2017

Location: Statewide

TEMPORARY ASSISTANCE FOR NEEDY FAMILIES (TANF)

Child-Only and One-Parent Families	Aug 31, 2017	July 2017	August 2016	Annual Change
Number of families receiving TANF Grants	6,689	6,589	7,357	-9.08%
Total number of grant recipients	13,880	13,622	15,331	-9.46%
Number of adult grant recipients	1,949	1,887	2,262	-13.84%
Number of child grant recipients	11,931	11,735	13,069	-8.71%
Total payments	\$1,282,384	\$1,253,506	\$1,389,995	-7.74%
Average payment per case	\$191.72	\$190.24	\$188.94	1.47%
Average payment per recipient	\$92.39	\$92.02	\$90.67	1.90%
Number of cases with benefits reduced to zero	105	106	195	-46.15%
Number of recipients with benefits reduced to zero	213	201	421	-49.41%
Number of adult recipients with benefit reduced to zero	50	46	102	-50.98%
Number of child recipients with benefit reduced to zero	163	155	319	-48.90%

Two-Parent Families	Aug 31, 2017	July 2017	August 2016	Annual Change
Number of families receiving TANF Grants	333	336	435	-23.45%
Total number of grant recipients	1,373	1,378	1,796	-23.55%
Number of adult grant recipients	498	500	683	-27.09%
Number of child grant recipients	875	878	1,113	-21.38%
Total payments	\$73,761	\$73,052	\$97,641	-24.46%
Average payment per case	\$221.50	\$217.42	\$224.46	-1.32%
Average payment per recipient	\$53.72	\$53.01	\$54.37	-1.18%
Number of cases with benefits reduced to zero	4	8	19	-78.95%
Number of recipients with benefits reduced to zero	16	28	66	-75.76%
Number of adult recipients with benefit reduced to zero	6	10	29	-79.31%
Number of child recipients with benefit reduced to zero	10	18	37	-72.97%

Note:

All data July 2014 and following will be broken out according to the new DFR region structure effective July 1 2014.

Source:



DIVISION OF FAMILY RESOURCES

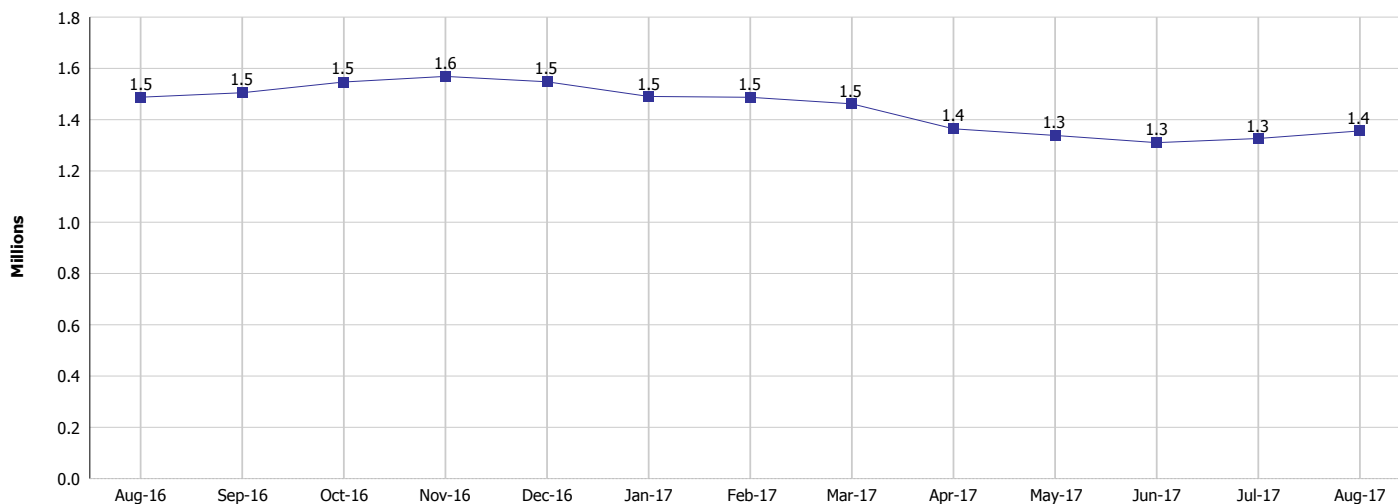
Monthly Management Report

Reporting Month: August 2017

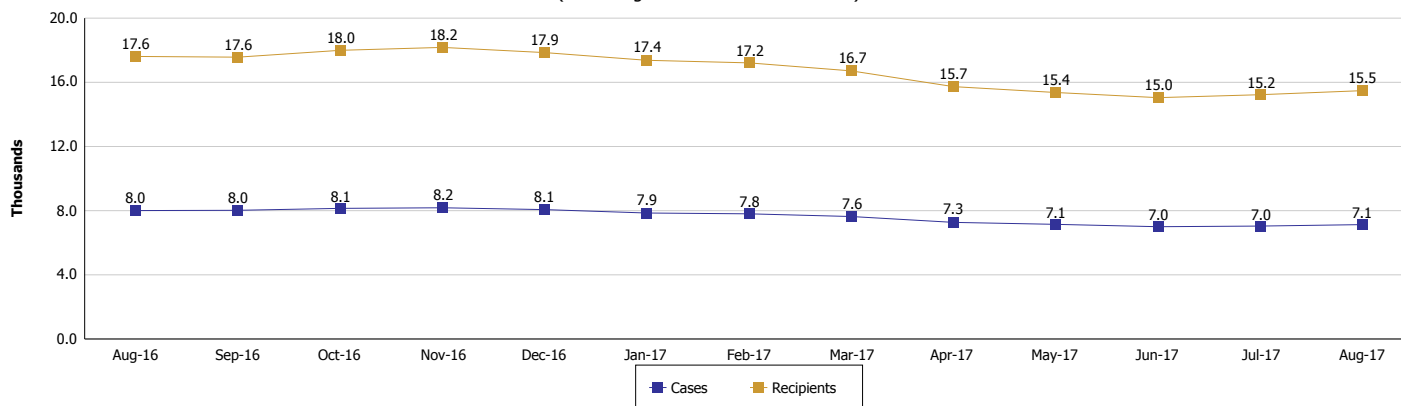
Location: Statewide

TEMPORARY ASSISTANCE FOR NEEDY FAMILIES (TANF)

TANF Cash Assistance
(TANF Regular and TANF Two-Parent)



TANF Cases and Recipients
(TANF Regular and TANF Two-Parent)



Note:

All data July 2014 and following will be broken out according to the new DFR region structure effective July 1 2014.



DIVISION OF FAMILY RESOURCES

Monthly Management Report

Reporting Month: August 2017

Location: Statewide

SUPPLEMENTAL NUTRITION ASSISTANCE PROGRAM (SNAP)

	August 2017	July 2017	August 2016	Annual Change
Total issuance	\$78,680,630	\$77,833,407	\$86,032,489	-8.55%
Number of households receiving SNAP benefits	290,219	288,309	316,331	-8.25%
Number of recipients	654,122	649,396	717,831	-8.88%
Average issuance per household	\$271.11	\$269.97	\$271.97	-0.32%
Average issuance per recipient	\$120.28	\$119.86	\$119.85	0.36%

Note:

All data July 2014 and following will be broken out according to the new DFR region structure effective July 1 2014.

SNAP ERROR RATES

	April 2017	March 2017	February 2017	Cumulative FFY 2016
FFY Cumulative Positive Error Rate	8.50%	8.73%	9.22%	6.94%
Monthly Positive Error Rate	7.19%	5.18%	8.24%	NA
FFY Cumulative Negative Error Rate	31.25%	32.51%	34.10%	27.12%
Monthly Negative Error Rate	22.00%	24.59%	34.48%	NA

Note:

All data July 2014 and following will be broken out according to the new DFR region structure effective July 1 2014.

Notes:

Reporting periods for SNAP Error Rates reflect the review period and Federal submission deadline. The month reported above is the month in which an action was taken included in the review sample.

Positive actions are those which produced an issuance of benefits to a household. Negative actions are those which closed or denied benefits to a household.

Error Rate data is reported by the state before the federal agency has accepted and finalized the results. This rate is subject to revision based upon: completion and submission of outstanding reviews; final review corrections; and completion of previously dropped reviews. Monthly numbers are taken from end-of-month totals. The error status of cases may be changed by the State or Federal Review process, which would cause a change that might not be reflected in the previous monthly numbers.



DIVISION OF FAMILY RESOURCES

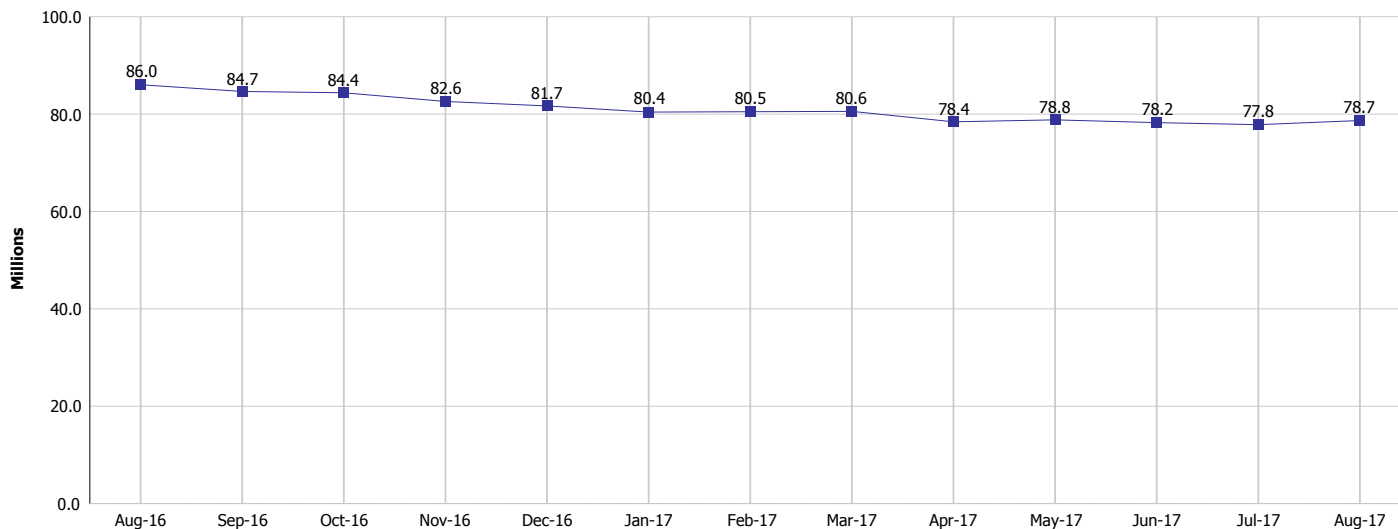
Monthly Management Report

Reporting Month: August 2017

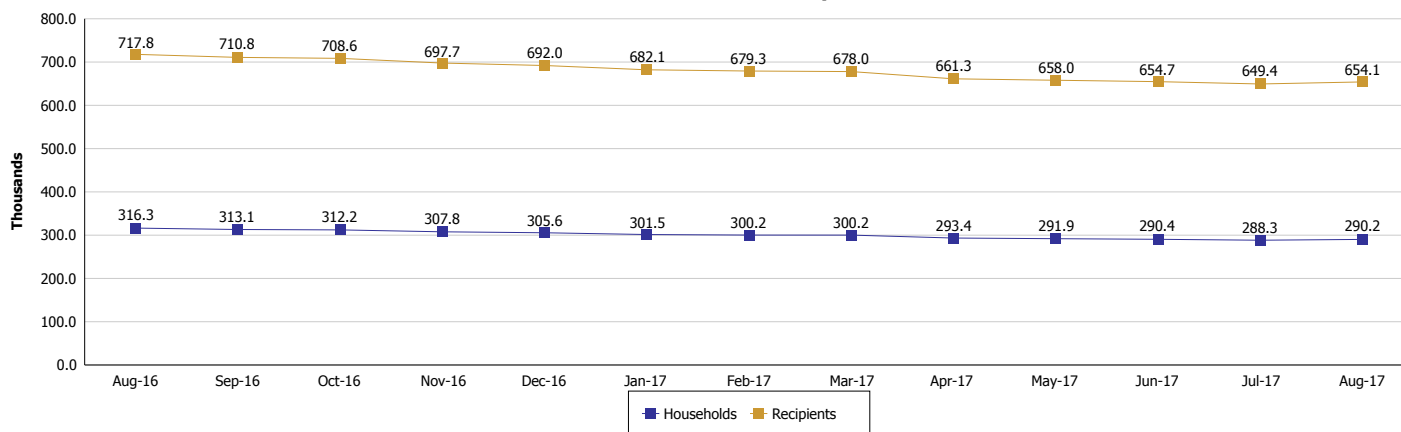
Location: Statewide

SUPPLEMENTAL NUTRITION ASSISTANCE PROGRAM (SNAP)

SNAP Issuance



SNAP Households and Recipients



Note:

All data July 2014 and following will be broken out according to the new DFR region structure effective July 1 2014.



DIVISION OF FAMILY RESOURCES

Monthly Management Report

Reporting Month: August 2017

Location: Statewide

HIP 2.0 and SNAP

	August 2017	July 2017	August 2016	Annual Change
Total HIP 2.0 Members	446,485	443,884	412,310	8.29%
HIP Members also SNAP Recipients	153,640	152,256	163,861	-6.24%
Percentage HIP Members SNAP Recipients	34.4%	34.3%	39.7%	3.92%
HIP Members SNAP ABAWDs	4,463	4,377	5,605	-20.37%
Percentage HIP Members SNAP ABAWDs	1.0%	1.0%	1.4%	3.92%

Note:

All data July 2014 and following will be broken out according to the new DFR region structure effective July 1 2014.



DIVISION OF FAMILY RESOURCES

Monthly Management Report

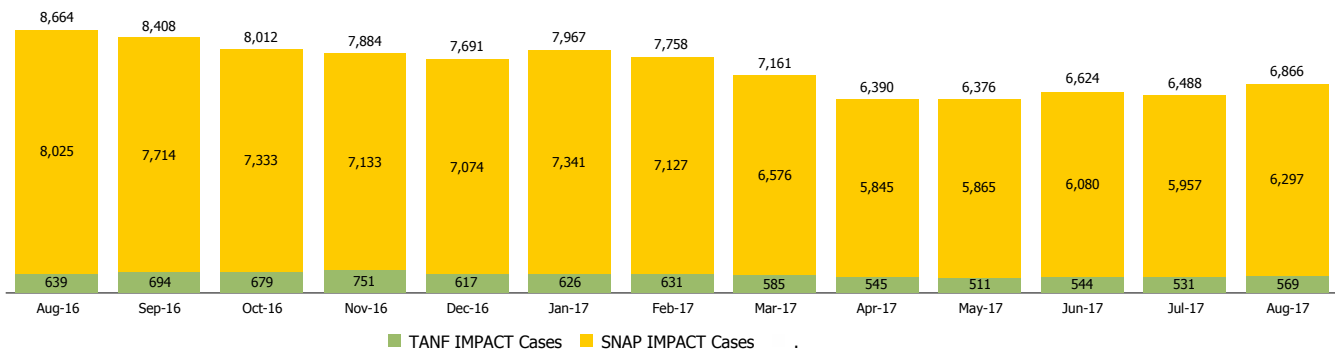
Reporting Month: August 2017

Location: Statewide

INDIANA MANPOWER PLACEMENT AND COMPREHENSIVE TRAINING (IMPACT)

	August 2017	July 2017	August 2016	Annual Change
Number of IMPACT cases	6,866	6,488	8,664	-20.75%
Number of TANF IMPACT adults	569	531	639	-10.95%
Number of SNAP IMPACT Cases	6,297	5,957	8,025	-21.53%
Total number of adults employed	1,666	926	1,641	1.52%
Number of TANF IMPACT adults newly employed (within past 30 days)	119	82	150	-20.67%
Number of SNAP IMPACT adults employed	1,547	844	1,491	3.76%
Total number of adults ineligible due to employment	5,312	5,345	5,939	-10.56%
Number of TANF adults ineligible due to employment	9	15	22	-59.09%
Number of SNAP adults ineligible due to employment	5,303	5,330	5,917	-10.38%

IMPACT Caseloads
(SNAP, TANF, Total Caseload)



Note:

All data July 2014 and following will be broken out according to the new DFR region structure effective July 1 2014.