



## DIVISION OF FAMILY RESOURCES

# Monthly Management Report August 2020

### State of Indiana

Eric Holcomb  
Governor

### Family and Social Services Administration

Jennifer Sullivan, M.D.  
Secretary

### Division of Family Resources

Adrienne Shields  
Director

For questions regarding data on this report contact:  
[office.Communications@fssa.IN.gov](mailto:office.Communications@fssa.IN.gov)



## State of Indiana

Published October 2020



## DIVISION OF FAMILY RESOURCES

### Monthly Management Report

Reporting Month: August 2020

Location: Statewide

#### TEMPORARY ASSISTANCE FOR NEEDY FAMILIES (TANF)

Child-Only and One-Parent Families	Aug 31, 2020	July 2020	August 2019	Annual Change
Number of families receiving TANF Grants	7,127	7,340	5,111	39.44%
Total number of grant recipients	16,009	16,856	10,556	51.66%
Number of adult grant recipients	3,250	3,610	1,450	124.14%
Number of child grant recipients	12,759	13,246	9,106	40.12%
Total payments	\$1,473,791	\$1,528,242	\$983,016	49.93%
Average payment per case	\$206.79	\$208.21	\$192.33	7.52%
Average payment per recipient	\$92.06	\$90.66	\$93.12	-1.14%
Number of cases with benefits reduced to zero	276	200	66	318.18%
Number of recipients with benefits reduced to zero	691	504	139	397.12%
Number of adult recipients with benefit reduced to zero	196	147	30	553.33%
Number of child recipients with benefit reduced to zero	495	357	109	354.13%

Two-Parent Families	Aug 31, 2020	July 2020	August 2019	Annual Change
Number of families receiving TANF Grants	569	570	223	155.16%
Total number of grant recipients	2,022	2,180	821	146.29%
Number of adult grant recipients	715	842	294	143.20%
Number of child grant recipients	1,307	1,338	527	148.01%
Total payments	\$156,053	\$160,862	\$51,960	200.33%
Average payment per case	\$274.26	\$282.21	\$233.00	17.71%
Average payment per recipient	\$77.18	\$73.79	\$63.29	21.95%
Number of cases with benefits reduced to zero	51	33	5	920.00%
Number of recipients with benefits reduced to zero	204	119	26	684.62%
Number of adult recipients with benefit reduced to zero	84	56	9	833.33%
Number of child recipients with benefit reduced to zero	120	63	17	605.88%

**Note:**

All data July 2014 and following will be broken out according to the new DFR region structure effective July 1 2014.

Source:



## DIVISION OF FAMILY RESOURCES

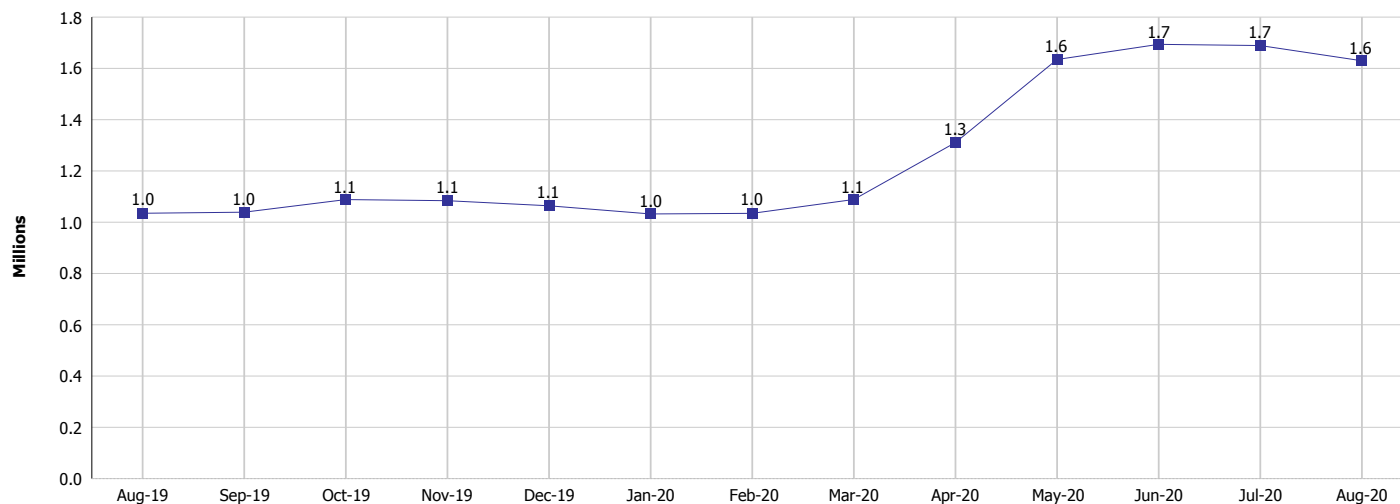
### Monthly Management Report

Reporting Month: August 2020

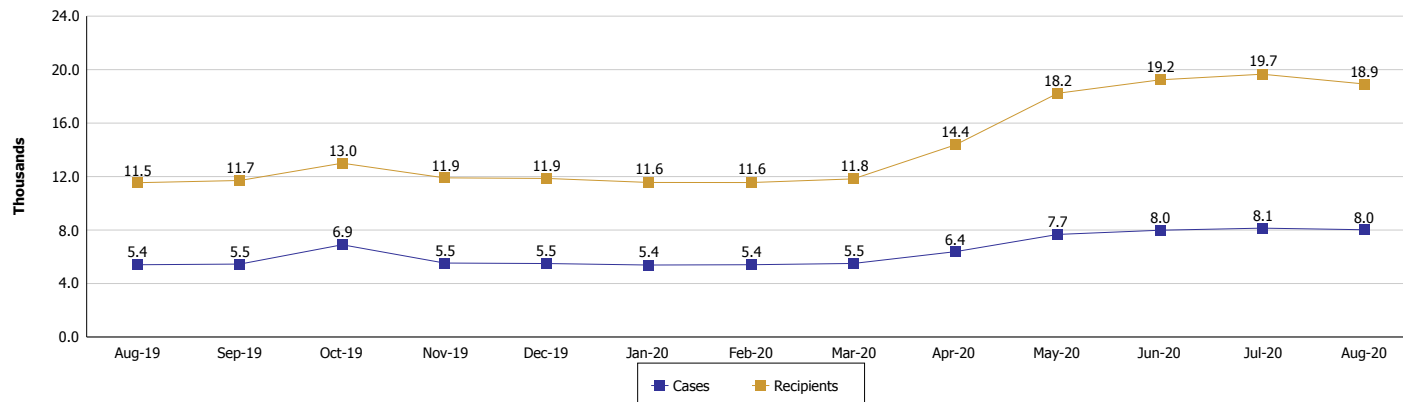
Location: Statewide

#### TEMPORARY ASSISTANCE FOR NEEDY FAMILIES (TANF)

**TANF Cash Assistance**  
(TANF Regular and TANF Two-Parent)



**TANF Cases and Recipients**  
(TANF Regular and TANF Two-Parent)



**Note:**

All data July 2014 and following will be broken out according to the new DFR region structure effective July 1 2014.

**Monthly Management Report**

Reporting Month: August 2020 Location: Statewide

**SUPPLEMENTAL NUTRITION ASSISTANCE PROGRAM (SNAP)**

	August 2020	July 2020	August 2019	Annual Change
Total issuance	\$112,072,294	\$113,611,739	\$68,728,164	63.07%
Number of households receiving SNAP benefits	295,642	300,451	258,050	14.57%
Number of recipients	633,289	650,392	573,808	10.37%
Average issuance per household	\$379.08	\$378.14	\$266.34	42.33%
Average issuance per recipient	\$176.97	\$174.68	\$119.78	47.75%

**Note:**  
All data July 2014 and following will be broken out according to the new DFR region structure effective July 1 2014.

**SNAP ERROR RATES**

	February 2020	Cumulative FFY 2019
FFY Cumulative Positive Error Rate	7.37%	8.30%
Monthly Positive Error Rate	10.67%	NA
FFY Cumulative Negative Error Rate	41.56%	40.03%
Monthly Negative Error Rate	60.00%	NA

**Note:**  
All data July 2014 and following will be broken out according to the new DFR region structure effective July 1 2014.

**Notes:**  
Reporting periods for SNAP Error Rates reflect the review period and Federal submission deadline. The month reported above is the month in which an action was taken included in the review sample.  
Positive actions are those which produced an issuance of benefits to a household. Negative actions are those which closed or denied benefits to a household.  
Error Rate data is reported by the state before the federal agency has accepted and finalized the results. This rate is subject to revision based upon: completion and submission of outstanding reviews; final review corrections; and completion of previously dropped reviews. Monthly numbers are taken from end-of-month totals. The error status of cases may be changed by the State or Federal Review process, which would cause a change that might not be reflected in the previous monthly numbers.



# DIVISION OF FAMILY RESOURCES

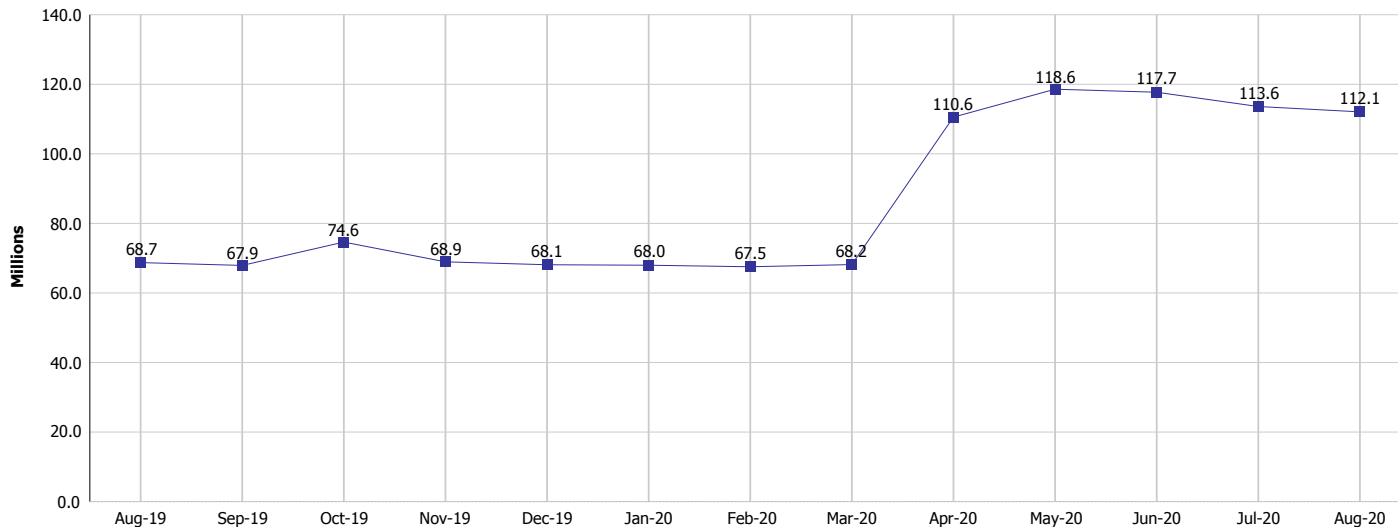
## Monthly Management Report

Reporting Month: August 2020

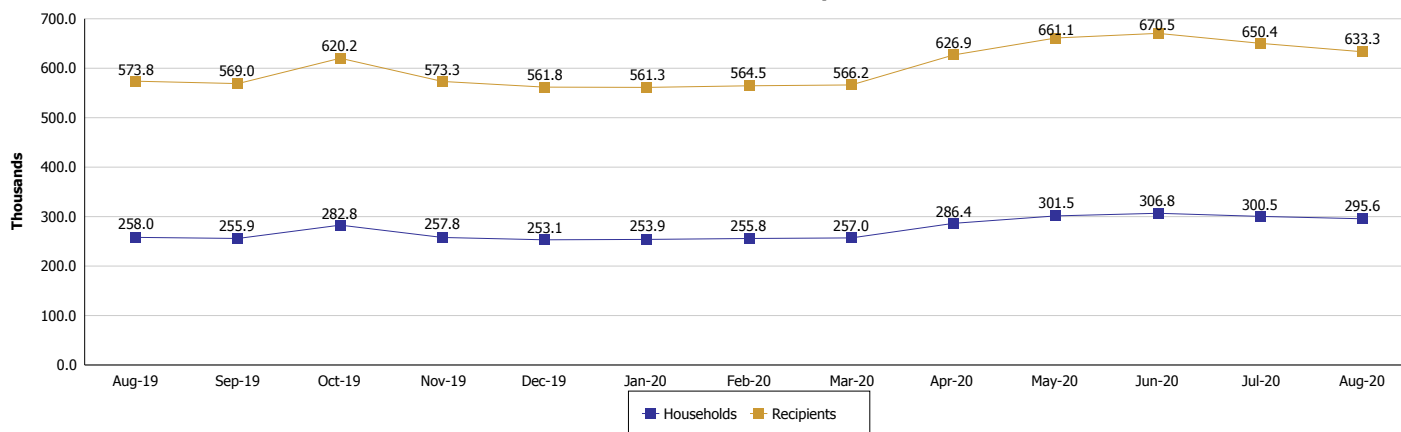
Location: Statewide

### SUPPLEMENTAL NUTRITION ASSISTANCE PROGRAM (SNAP)

#### SNAP Issuance



#### SNAP Households and Recipients



**Note:**

All data July 2014 and following will be broken out according to the new DFR region structure effective July 1 2014.



## DIVISION OF FAMILY RESOURCES

### Monthly Management Report

Reporting Month: August 2020

Location: Statewide

#### HIP 2.0 and SNAP

	August 2020	July 2020	August 2019	Annual Change
Total HIP 2.0 Members	539,209	526,766	426,975	26.29%
HIP Members also SNAP Recipients	170,284	176,456	140,035	21.60%
Percentage HIP Members SNAP Recipients	31.6%	33.5%	32.8%	-1.22
HIP Members SNAP ABAWDs	1,569	3,782	3,890	-59.67%
Percentage HIP Members SNAP ABAWDs	0.3%	0.7%	0.9%	-0.6

**Note:**

All data July 2014 and following will be broken out according to the new DFR region structure effective July 1 2014.



## DIVISION OF FAMILY RESOURCES

### Monthly Management Report

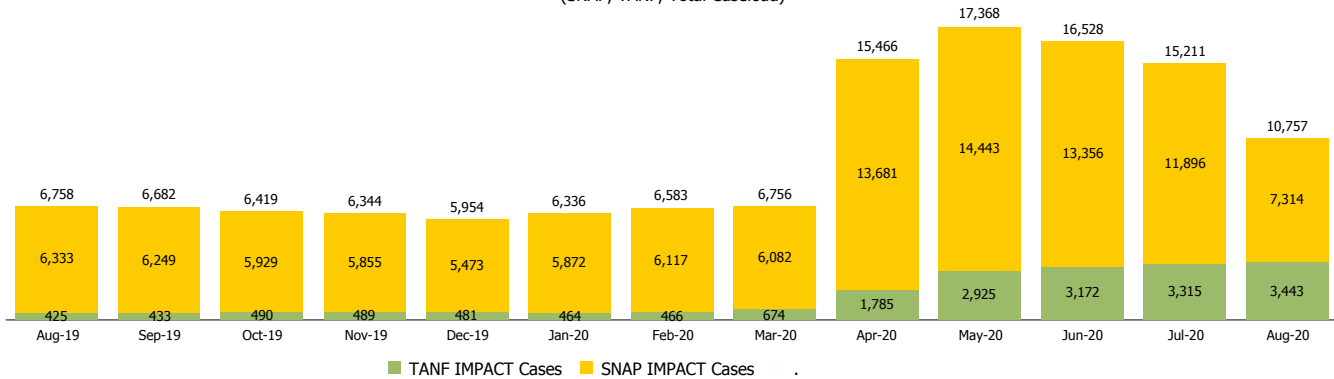
Reporting Month: August 2020

Location: Statewide

#### INDIANA MANPOWER PLACEMENT AND COMPREHENSIVE TRAINING (IMPACT)

	August 2020	July 2020	August 2019	Annual Change
Number of IMPACT cases	10,757	15,211	6,758	59.17%
Number of TANF IMPACT adults	3,443	3,315	425	710.12%
Number of SNAP IMPACT Cases	7,314	11,896	6,333	15.49%
Total number of adults employed	1,224	1,235	1,145	6.90%
Number of TANF IMPACT adults newly employed (within past 30 days)	256	165	97	163.92%
Number of SNAP IMPACT adults employed	968	1,070	1,048	-7.63%
Total number of adults ineligible due to employment	10,962	10,115	4,463	145.62%
Number of TANF adults ineligible due to employment	31	37	17	82.35%
Number of SNAP adults ineligible due to employment	10,931	10,078	4,446	145.86%

**IMPACT Caseloads**  
(SNAP, TANF, Total Caseload)



**Note:**

All data July 2014 and following will be broken out according to the new DFR region structure effective July 1 2014.