



## DIVISION OF FAMILY RESOURCES

# Statewide Monthly Management Report November 2023

### State of Indiana

Eric Holcomb  
Governor

### Family and Social Services Administration

Dan Rusyniak, MD  
Secretary

### Division of Family Resources

Adrienne Shields  
Director

For questions regarding data on this report contact:  
[office.Communications@fssa.IN.gov](mailto:office.Communications@fssa.IN.gov)



## State of Indiana

Published December 2023



## DIVISION OF FAMILY RESOURCES

### Monthly Management Report

Reporting Month: November 2023

Location: Statewide

#### TEMPORARY ASSISTANCE FOR NEEDY FAMILIES (TANF)

Child-Only and One-Parent Families	November 2023	October 2023	November 2022	Annual Change
Number of families receiving TANF Grants	4,594	4,483	3,865	18.86%
Total number of grant recipients	9,871	9,543	7,716	27.93%
Number of adult grant recipients	1,615	1,504	818	97.43%
Number of child grant recipients	8,256	8,039	6,898	19.69%
Total payments	\$1,044,621	\$991,296	\$755,809	38.21%
Average payment per case	\$227.39	\$221.12	\$195.55	16.28%
Average payment per recipient	\$105.83	\$103.88	\$97.95	8.04%
Number of cases with benefits reduced to zero	128	115	94	36.17%
Number of recipients with benefits reduced to zero	272	224	181	50.28%
Number of adult recipients with benefit reduced to zero	30	25	29	3.45%
Number of child recipients with benefit reduced to zero	242	199	152	59.21%

Two-Parent Families	November 2023	October 2023	November 2022	Annual Change
Number of families receiving TANF Grants	972	945	447	117.45%
Total number of grant recipients	3,509	3,421	1,606	118.49%
Number of adult grant recipients	1,943	1,887	678	186.58%
Number of child grant recipients	1,566	1,534	928	68.75%
Total payments	\$330,704	\$316,617	\$135,681	143.74%
Average payment per case	\$340.23	\$335.04	\$303.54	12.09%
Average payment per recipient	\$94.24	\$92.55	\$84.48	11.55%
Number of cases with benefits reduced to zero	9	7	1	800.00%
Number of recipients with benefits reduced to zero	34	26	4	750.00%
Number of adult recipients with benefit reduced to zero	18	14	2	800.00%
Number of child recipients with benefit reduced to zero	16	12	2	700.00%

**Note:**

For August 2021, a one time payment of \$400 per recipient was included in the Total payments and Average payments. TANF section rules changed to reflect Federal reporting logic effective September 2021. For August 2022, a one-time payment of \$269 per recipient was included in the Total payments and Average payments.

Source:



## DIVISION OF FAMILY RESOURCES

### Monthly Management Report

Reporting Month: November 2023

Location: Statewide

#### TANF - APPLICATIONS

	November 2023	October 2023	November 2022	Annual Change
<b>Number of Applications</b>	7,243	8,177	3,216	125.22%



# DIVISION OF FAMILY RESOURCES

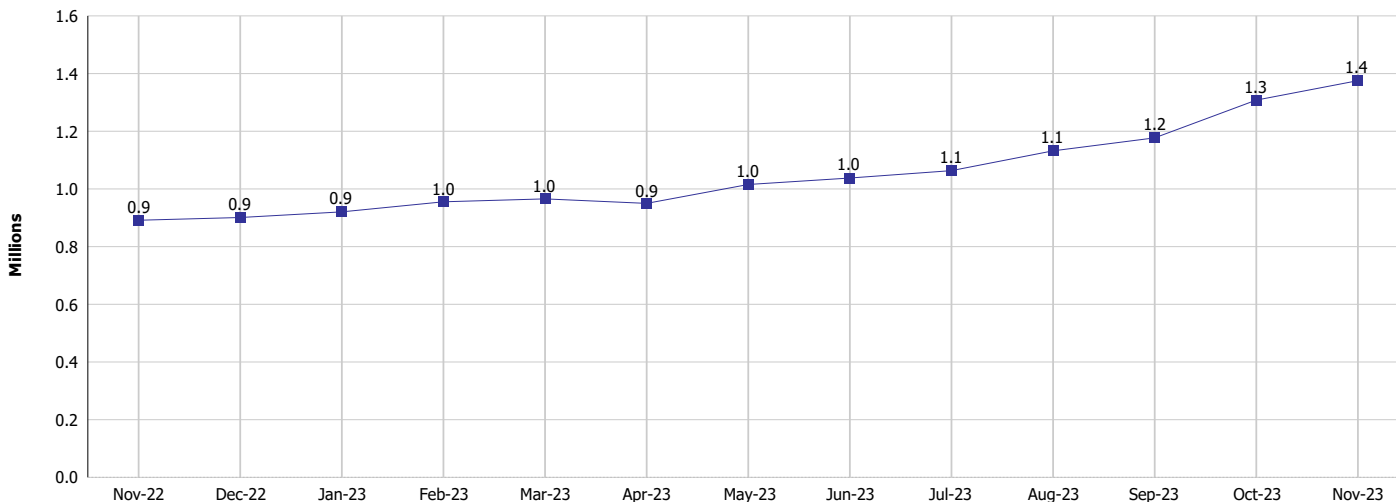
## Monthly Management Report

Reporting Month: November 2023

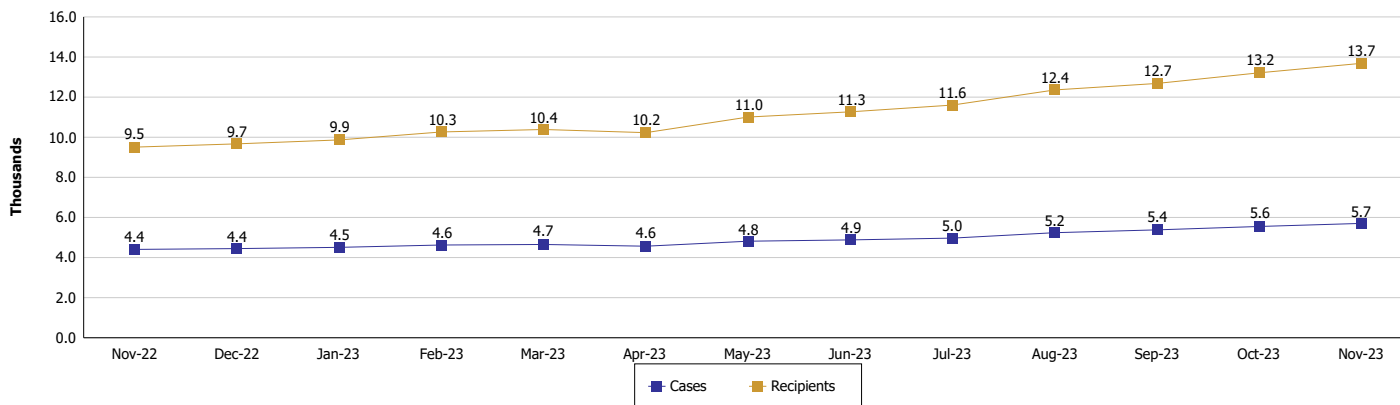
Location: Statewide

### TEMPORARY ASSISTANCE FOR NEEDY FAMILIES (TANF)

#### TANF Cash Assistance (TANF Regular and TANF Two-Parent)



#### TANF Cases and Recipients (TANF Regular and TANF Two-Parent)



**Note:**

For August 2021, a one time payment of \$400 per recipient was included in the Total payments and Average payments. TANF section rules changed to reflect Federal reporting logic effective September 2021. For August 2022, a one-time payment of \$269 per recipient was included in the Total payments and Average payments.



## DIVISION OF FAMILY RESOURCES

### Monthly Management Report

Reporting Month: November 2023

Location: Statewide

#### SUPPLEMENTAL NUTRITION ASSISTANCE PROGRAM (SNAP)

	November 2023	October 2023	November 2022	Annual Change
Total issuance	\$123,472,533	\$123,572,940	\$115,278,447	7.11%
Number of households receiving SNAP benefits	292,620	292,101	282,679	3.52%
Number of recipients	613,872	612,855	596,615	2.89%
Average issuance per household	\$421.96	\$423.05	\$407.81	3.47%
Average issuance per recipient	\$201.14	\$201.63	\$193.22	4.10%
Number of Applications	41,188	46,420	20,738	98.61%



# DIVISION OF FAMILY RESOURCES

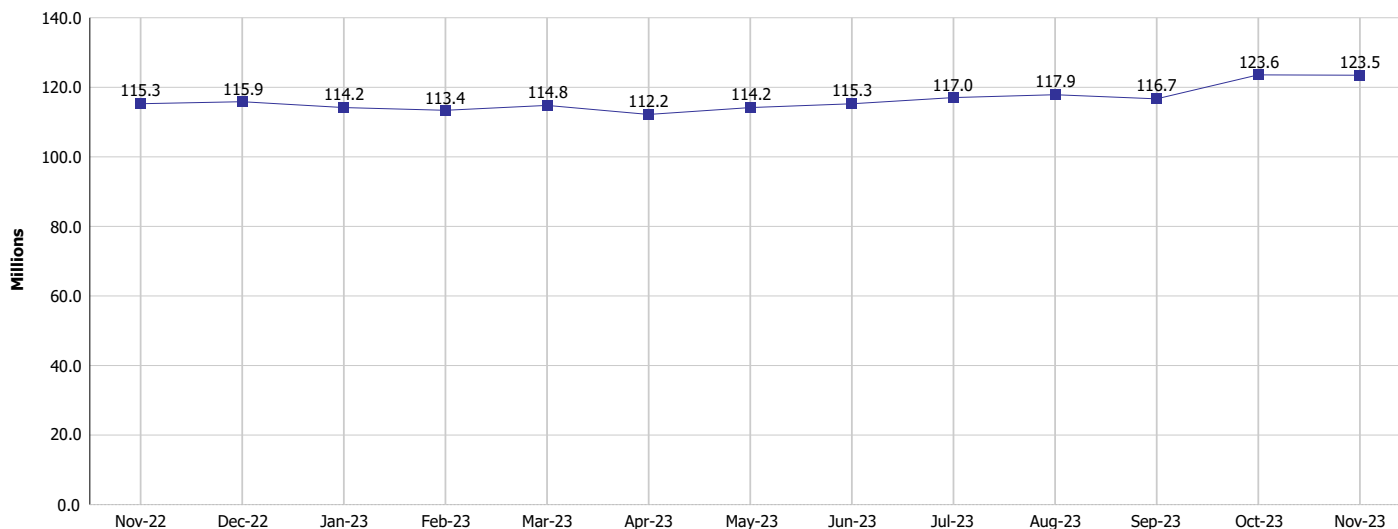
## Monthly Management Report

Reporting Month: November 2023

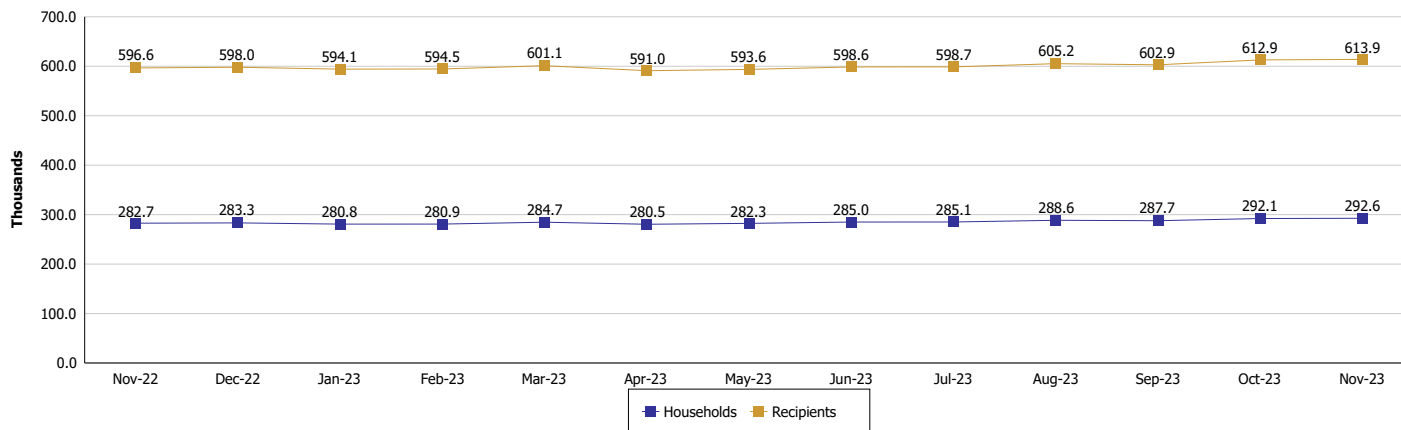
Location: Statewide

### SUPPLEMENTAL NUTRITION ASSISTANCE PROGRAM (SNAP)

**SNAP Issuance**



**SNAP Households and Recipients**



**Note:**

Run Date: Dec 11, 2023

Page 5 of 7



## DIVISION OF FAMILY RESOURCES

### Monthly Management Report

Reporting Month: November 2023

Location: Statewide

#### HIP 2.0 and SNAP

	November 2023	October 2023	November 2022	Annual Change
Total HIP 2.0 Members	787,073	796,055	825,094	-4.61%
HIP Members also SNAP Recipients	184,532	184,096	180,332	2.33%
Percentage HIP Members SNAP Recipients	23.4%	23.1%	21.9%	1.59
HIP Members SNAP ABAWDs	12,332	11,985	13,077	-5.70%
Percentage HIP Members SNAP ABAWDs	1.6%	1.5%	1.6%	0.0



## DIVISION OF FAMILY RESOURCES

### Monthly Management Report

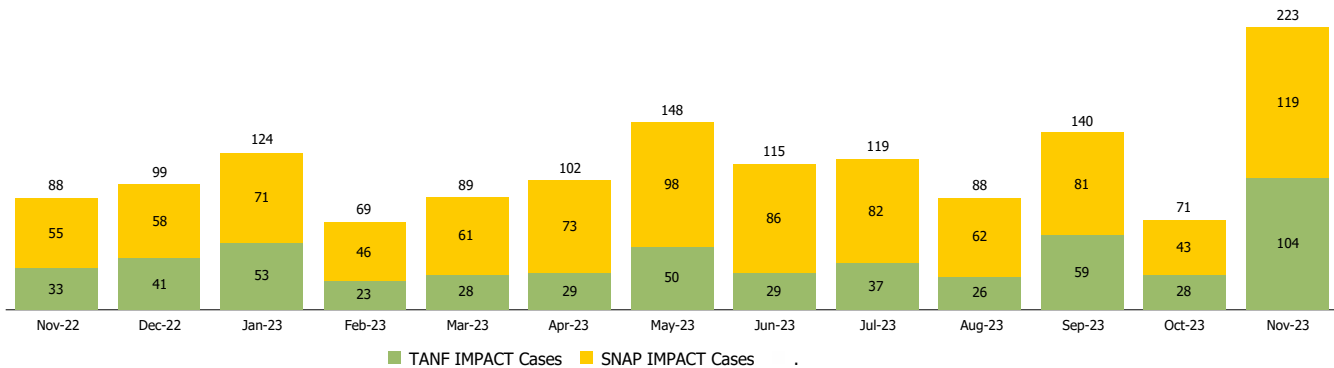
Reporting Month: November 2023

Location: Statewide

#### INDIANA MANPOWER PLACEMENT AND COMPREHENSIVE TRAINING (IMPACT)

	November 2023	October 2023	November 2022	Annual Change
Number of IMPACT cases	223	71	88	153.41%
Number of TANF IMPACT adults	104	28	33	215.15%
Number of SNAP IMPACT Cases	119	43	55	116.36%
Total number of adults employed	1,418	1,273	3,055	-53.58%
Number of TANF IMPACT adults newly employed (within past 30 days)	44	25	48	-8.33%
Number of SNAP IMPACT adults employed	1,374	1,248	3,007	-54.31%
Total number of adults ineligible due to employment	1,668	1,411	1,369	21.84%
Number of TANF adults ineligible due to employment	30	36	23	30.43%
Number of SNAP adults ineligible due to employment	1,638	1,375	1,346	21.69%

**IMPACT Caseloads**  
(SNAP, TANF, Total Caseload)



**Note:**

Effective January 2022, these numbers have been adjusted to reflect only those actually participating in IMPACT.