



## DIVISION OF FAMILY RESOURCES

# Statewide Monthly Management Report November 2022

### State of Indiana

Eric Holcomb  
Governor

### Family and Social Services Administration

Dan Rusyniak, MD  
Secretary

### Division of Family Resources

Adrienne Shields  
Director

For questions regarding data on this report contact:  
[office.Communications@fssa.IN.gov](mailto:office.Communications@fssa.IN.gov)



## State of Indiana

Published December 2022



## DIVISION OF FAMILY RESOURCES

### Monthly Management Report

Reporting Month: November 2022

Location: Statewide

#### TEMPORARY ASSISTANCE FOR NEEDY FAMILIES (TANF)

Child-Only and One-Parent Families	November 2022	October 2022	November 2021	Annual Change
Number of families receiving TANF Grants	3,865	3,842	4,961	-22.09%
Total number of grant recipients	7,716	7,687	10,438	-26.08%
Number of adult grant recipients	818	797	1,536	-46.74%
Number of child grant recipients	6,898	6,890	8,902	-22.51%
Total payments	\$755,809	\$750,816	\$1,003,449	-24.68%
Average payment per case	\$195.55	\$195.42	\$202.27	-3.32%
Average payment per recipient	\$97.95	\$97.67	\$96.13	1.89%
Number of cases with benefits reduced to zero	94	90	206	-54.37%
Number of recipients with benefits reduced to zero	181	170	442	-59.05%
Number of adult recipients with benefit reduced to zero	29	26	104	-72.12%
Number of child recipients with benefit reduced to zero	152	144	338	-55.03%

Two-Parent Families	November 2022	October 2022	November 2021	Annual Change
Number of families receiving TANF Grants	447	401	308	45.13%
Total number of grant recipients	1,606	1,433	999	60.76%
Number of adult grant recipients	678	571	337	101.19%
Number of child grant recipients	928	862	662	40.18%
Total payments	\$135,681	\$120,202	\$84,519	60.53%
Average payment per case	\$303.54	\$299.76	\$274.41	10.61%
Average payment per recipient	\$84.48	\$83.88	\$84.60	-0.14%
Number of cases with benefits reduced to zero	1	0	5	-80.00%
Number of recipients with benefits reduced to zero	4	0	22	-81.82%
Number of adult recipients with benefit reduced to zero	2	0	10	-80.00%
Number of child recipients with benefit reduced to zero	2	0	12	-83.33%

**Note:**

For August 2021, a one time payment of \$400 per recipient was included in the Total payments and Average payments. TANF section rules changed to reflect Federal reporting logic effective September 2021. For August 2022, a one-time payment of \$269 per recipient was included in the Total payments and Average payments.

Source:



## DIVISION OF FAMILY RESOURCES

### Monthly Management Report

Reporting Month: November 2022

Location: Statewide

#### TANF - APPLICATIONS

	November 2022	October 2022	November 2021	Annual Change
<b>Number of Applications</b>	3,216	3,628	3,632	-11.45%



# DIVISION OF FAMILY RESOURCES

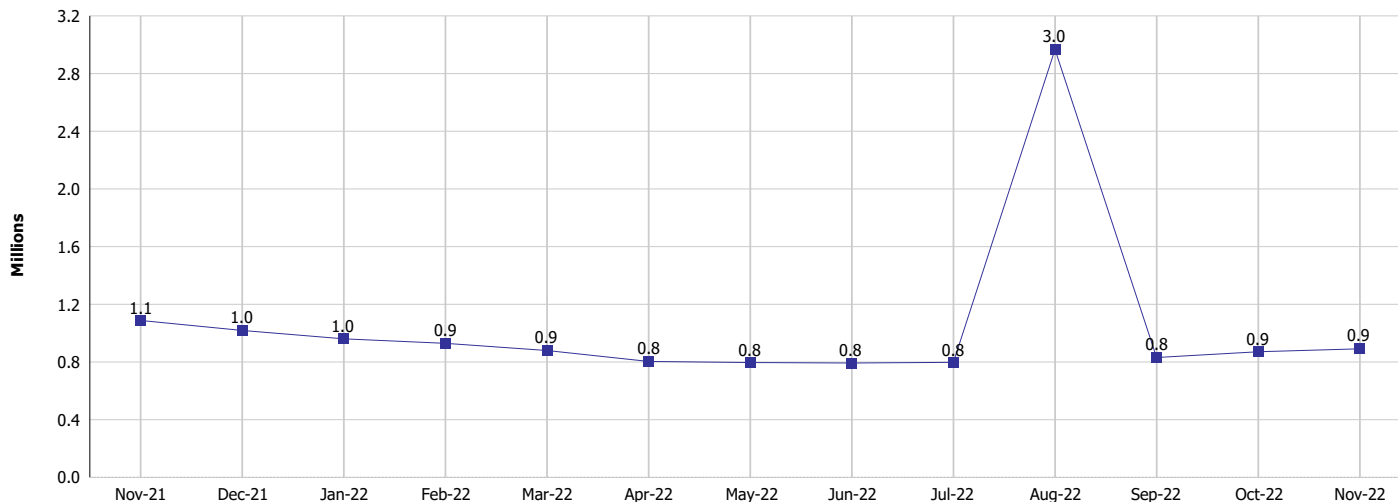
## Monthly Management Report

Reporting Month: November 2022

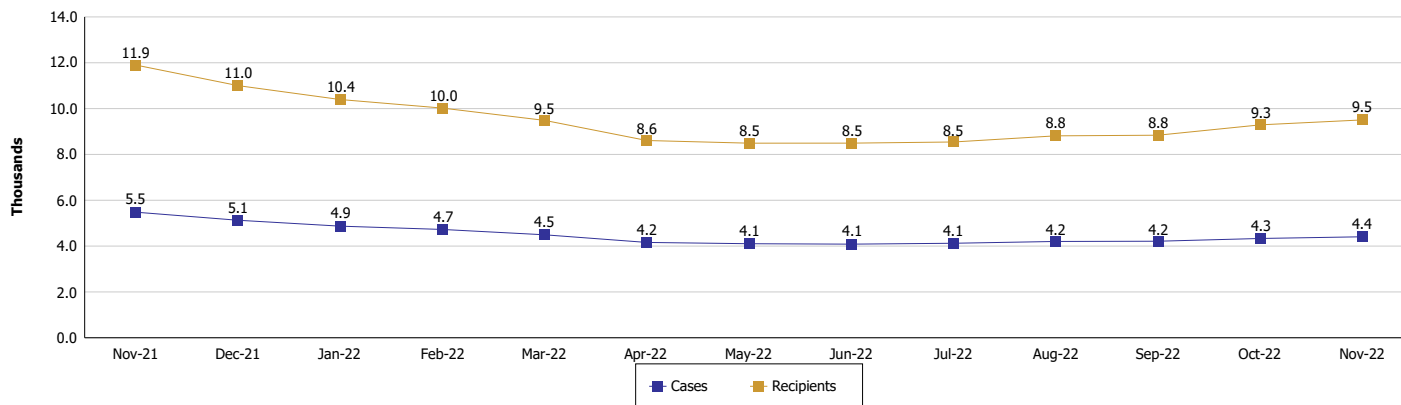
Location: Statewide

### TEMPORARY ASSISTANCE FOR NEEDY FAMILIES (TANF)

#### TANF Cash Assistance (TANF Regular and TANF Two-Parent)



#### TANF Cases and Recipients (TANF Regular and TANF Two-Parent)



**Note:**

For August 2021, a one time payment of \$400 per recipient was included in the Total payments and Average payments. TANF section rules changed to reflect Federal reporting logic effective September 2021. For August 2022, a one-time payment of \$269 per recipient was included in the Total payments and Average payments.



## DIVISION OF FAMILY RESOURCES

### Monthly Management Report

Reporting Month: November 2022

Location: Statewide

#### SUPPLEMENTAL NUTRITION ASSISTANCE PROGRAM (SNAP)

	November 2022	October 2022	November 2021	Annual Change
Total issuance	\$115,278,447	\$114,638,031	\$153,850,045	-25.07%
Number of households receiving SNAP benefits	282,679	283,891	292,710	-3.43%
Number of recipients	596,615	599,390	623,407	-4.30%
Average issuance per household	\$407.81	\$403.81	\$525.61	-22.41%
Average issuance per recipient	\$193.22	\$191.26	\$246.79	-21.71%
Number of Applications	20,738	22,174	21,829	-5.00%



# DIVISION OF FAMILY RESOURCES

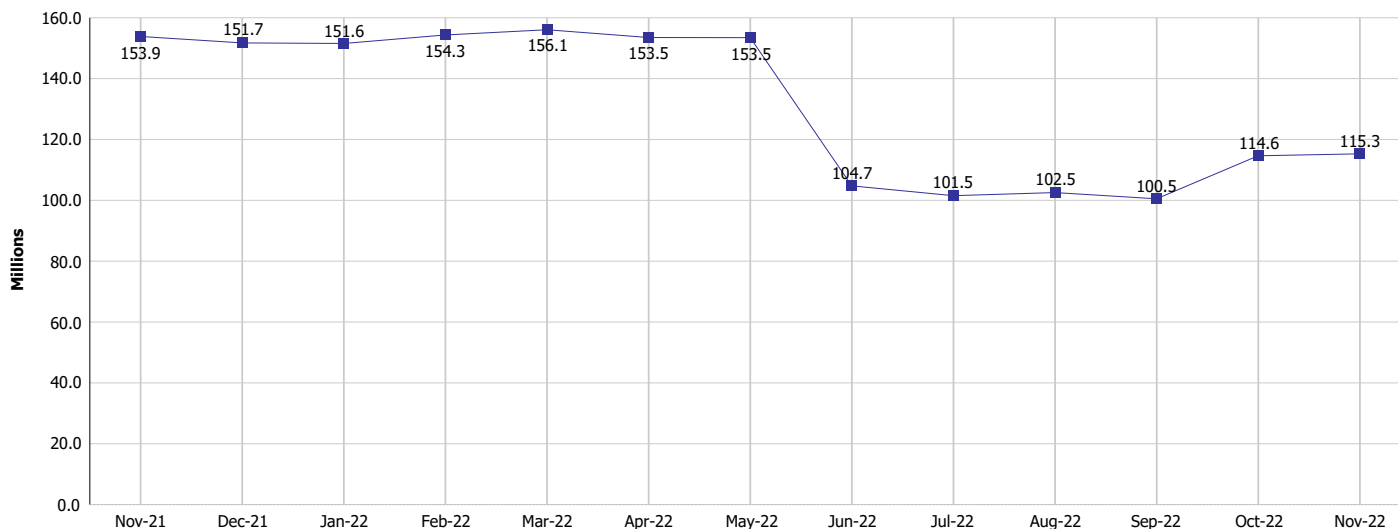
## Monthly Management Report

Reporting Month: November 2022

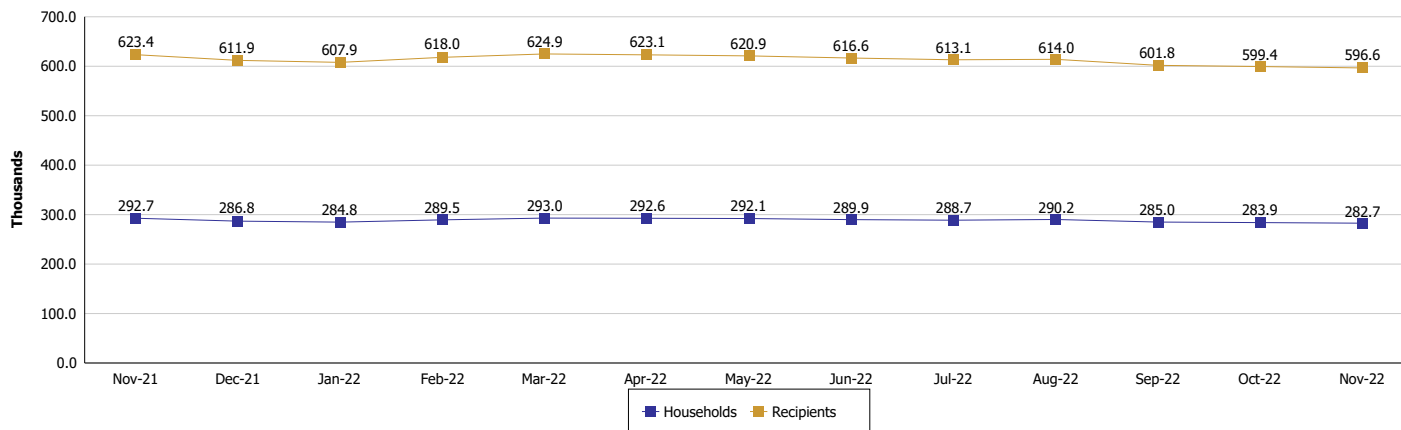
Location: Statewide

### SUPPLEMENTAL NUTRITION ASSISTANCE PROGRAM (SNAP)

#### SNAP Issuance



#### SNAP Households and Recipients



**Note:**

Run Date: Dec 11, 2022



## DIVISION OF FAMILY RESOURCES

### Monthly Management Report

Reporting Month: November 2022

Location: Statewide

#### HIP 2.0 and SNAP

	November 2022	October 2022	November 2021	Annual Change
Total HIP 2.0 Members	825,094	818,976	731,249	12.83%
HIP Members also SNAP Recipients	180,332	181,766	185,838	-2.96%
Percentage HIP Members SNAP Recipients	21.9%	22.2%	25.4%	-3.56
HIP Members SNAP ABAWDs	13,077	13,379	0	0%
Percentage HIP Members SNAP ABAWDs	1.6%	1.6%	0	1.6



## DIVISION OF FAMILY RESOURCES

### Monthly Management Report

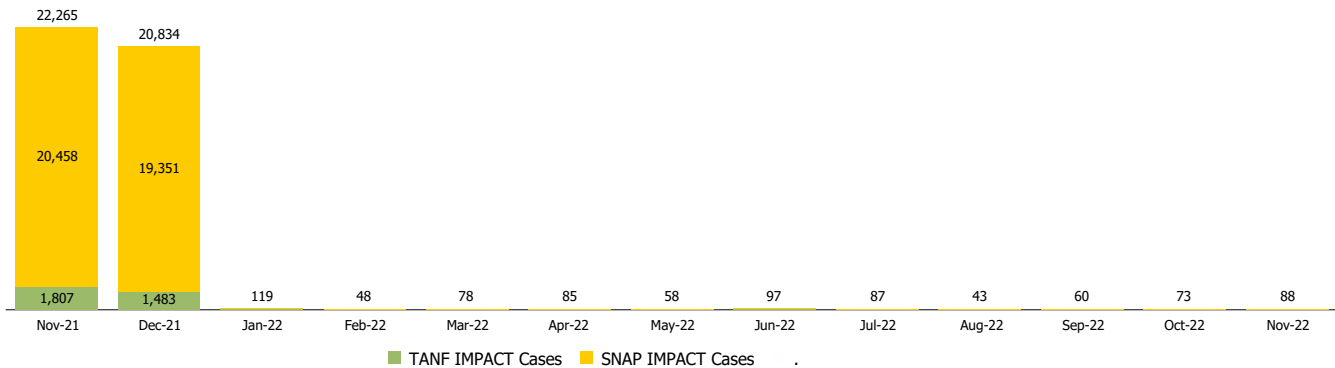
Reporting Month: November 2022

Location: Statewide

#### INDIANA MANPOWER PLACEMENT AND COMPREHENSIVE TRAINING (IMPACT)

	November 2022	October 2022	November 2021	Annual Change
Number of IMPACT cases	88	73	22,265	-99.60%
Number of TANF IMPACT adults	33	31	1,807	-98.17%
Number of SNAP IMPACT Cases	55	42	20,458	-99.73%
Total number of adults employed	3,055	3,095	2,542	20.18%
Number of TANF IMPACT adults newly employed (within past 30 days)	48	46	96	-50.00%
Number of SNAP IMPACT adults employed	3,007	3,049	2,446	22.94%
Total number of adults ineligible due to employment	1,369	1,313	2,150	-36.33%
Number of TANF adults ineligible due to employment	23	17	20	15.00%
Number of SNAP adults ineligible due to employment	1,346	1,296	2,130	-36.81%

**IMPACT Caseloads**  
(SNAP, TANF, Total Caseload)



**Note:**

Effective January 2022, these numbers have been adjusted to reflect only those actually participating in IMPACT.