



DIVISION OF FAMILY RESOURCES

Monthly Management Report July 2021

State of Indiana

Eric Holcomb
Governor

Family and Social Services Administration

Jennifer Sullivan, M.D.
Secretary

Division of Family Resources

Adrienne Shields
Director

For questions regarding data on this report contact:
office.Communications@fssa.IN.gov



State of Indiana

Published August 2021



DIVISION OF FAMILY RESOURCES

Monthly Management Report

Reporting Month: July 2021

Location: Statewide

TEMPORARY ASSISTANCE FOR NEEDY FAMILIES (TANF)

Child-Only and One-Parent Families	Jul 31, 2021	June 2021	July 2020	Annual Change
Number of families receiving TANF Grants	5,983	6,112	7,340	-18.49%
Total number of grant recipients	13,306	13,520	16,856	-21.06%
Number of adult grant recipients	2,625	2,722	3,610	-27.29%
Number of child grant recipients	10,681	10,798	13,246	-19.36%
Total payments	\$1,249,917	\$1,275,560	\$1,528,242	-18.21%
Average payment per case	\$208.91	\$208.70	\$208.21	0.34%
Average payment per recipient	\$93.94	\$94.35	\$90.66	3.61%
Number of cases with benefits reduced to zero	411	454	200	105.50%
Number of recipients with benefits reduced to zero	1,089	1,214	504	116.07%
Number of adult recipients with benefit reduced to zero	304	336	147	106.80%
Number of child recipients with benefit reduced to zero	785	878	357	119.89%

Two-Parent Families	Jul 31, 2021	June 2021	July 2020	Annual Change
Number of families receiving TANF Grants	1,053	1,054	570	84.74%
Total number of grant recipients	2,919	2,922	2,180	33.90%
Number of adult grant recipients	842	831	842	0.00%
Number of child grant recipients	2,077	2,091	1,338	55.23%
Total payments	\$249,499	\$248,939	\$160,862	55.10%
Average payment per case	\$236.94	\$236.19	\$282.21	-16.04%
Average payment per recipient	\$85.47	\$85.19	\$73.79	15.83%
Number of cases with benefits reduced to zero	63	64	33	90.91%
Number of recipients with benefits reduced to zero	230	242	119	93.28%
Number of adult recipients with benefit reduced to zero	72	79	56	28.57%
Number of child recipients with benefit reduced to zero	158	163	63	150.79%

Note:

All data July 2014 and following will be broken out according to the new DFR region structure effective July 1 2014.

Source:



DIVISION OF FAMILY RESOURCES

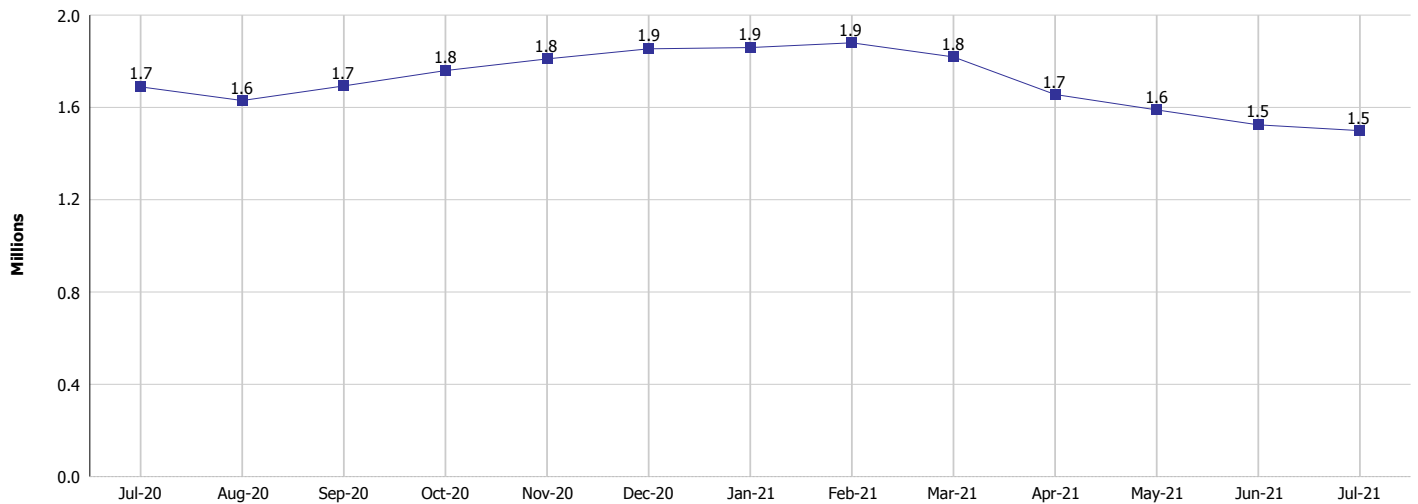
Monthly Management Report

Reporting Month: July 2021

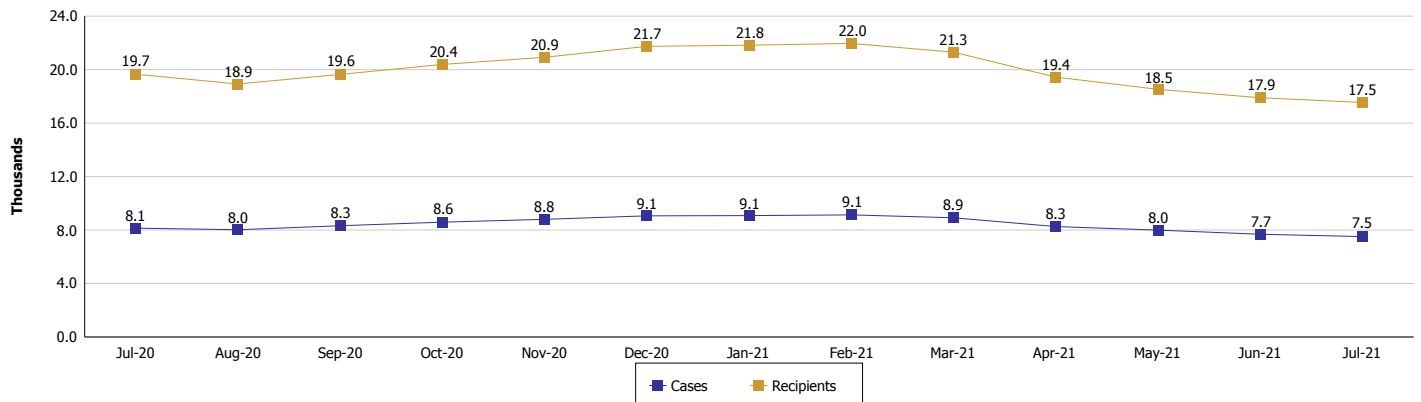
Location: Statewide

TEMPORARY ASSISTANCE FOR NEEDY FAMILIES (TANF)

TANF Cash Assistance
(TANF Regular and TANF Two-Parent)



TANF Cases and Recipients
(TANF Regular and TANF Two-Parent)



Note:

All data July 2014 and following will be broken out according to the new DFR region structure effective July 1 2014.

Monthly Management Report

Reporting Month: July 2021 Location: Statewide

SUPPLEMENTAL NUTRITION ASSISTANCE PROGRAM (SNAP)

	July 2021	June 2021	July 2020	Annual Change
Total issuance	\$143,941,752	\$145,855,682	\$113,611,739	26.70%
Number of households receiving SNAP benefits	293,072	296,740	300,451	-2.46%
Number of recipients	624,959	635,385	650,392	-3.91%
Average issuance per household	\$491.15	\$491.53	\$378.14	29.89%
Average issuance per recipient	\$230.32	\$229.55	\$174.68	31.85%

Note:
All data July 2014 and following will be broken out according to the new DFR region structure effective July 1 2014.

SNAP ERROR RATES

	Cumulative FFY
FFY Cumulative Positive Error Rate	
Monthly Positive Error Rate	NA
FFY Cumulative Negative Error Rate	
Monthly Negative Error Rate	NA

Note:
All data July 2014 and following will be broken out according to the new DFR region structure effective July 1 2014.

Notes:
Reporting periods for SNAP Error Rates reflect the review period and Federal submission deadline. The month reported above is the month in which an action was taken included in the review sample.
Positive actions are those which produced an issuance of benefits to a household. Negative actions are those which closed or denied benefits to a household.
Error Rate data is reported by the state before the federal agency has accepted and finalized the results. This rate is subject to revision based upon: completion and submission of outstanding reviews; final review corrections; and completion of previously dropped reviews. Monthly numbers are taken from end-of-month totals. The error status of cases may be changed by the State or Federal Review process, which would cause a change that might not be reflected in the previous monthly numbers.



DIVISION OF FAMILY RESOURCES

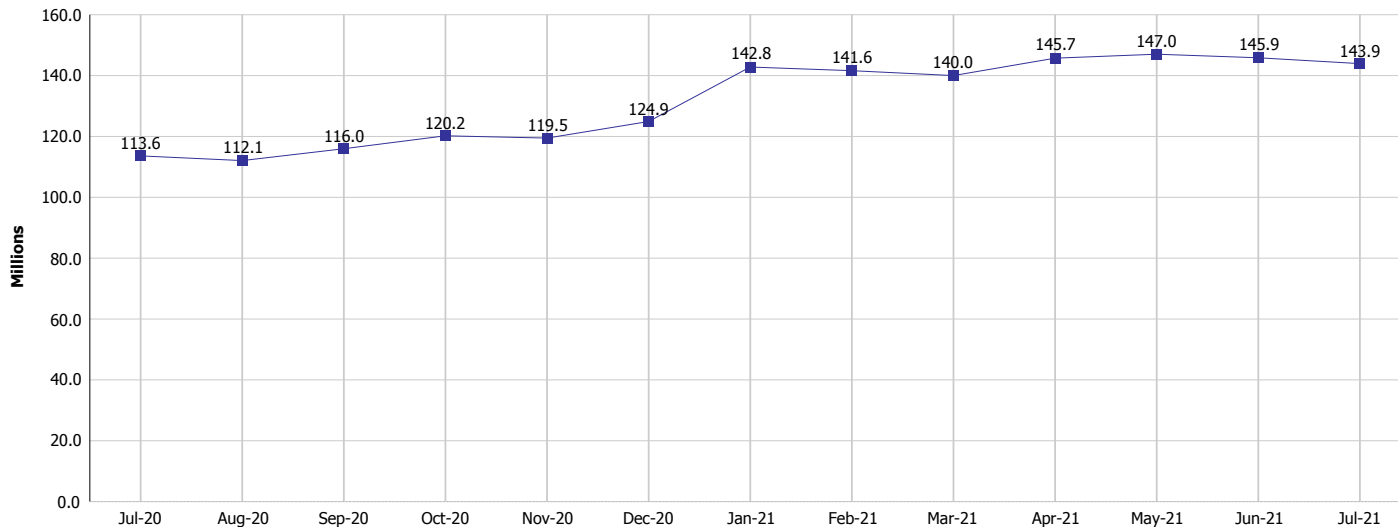
Monthly Management Report

Reporting Month: July 2021

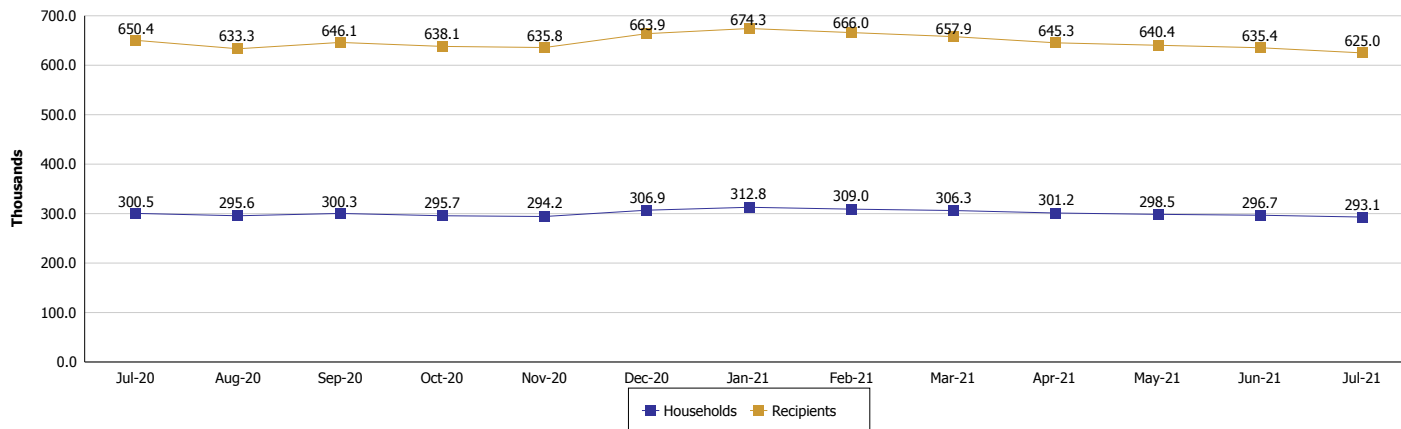
Location: Statewide

SUPPLEMENTAL NUTRITION ASSISTANCE PROGRAM (SNAP)

SNAP Issuance



SNAP Households and Recipients



Note:

All data July 2014 and following will be broken out according to the new DFR region structure effective July 1 2014.



DIVISION OF FAMILY RESOURCES

Monthly Management Report

Reporting Month: July 2021

Location: Statewide

HIP 2.0 and SNAP

	July 2021	June 2021	July 2020	Annual Change
Total HIP 2.0 Members	695,520	688,089	526,766	32.04%
HIP Members also SNAP Recipients	186,215	189,096	176,456	5.53%
Percentage HIP Members SNAP Recipients	26.8%	27.5%	33.5%	-6.72
HIP Members SNAP ABAWDs	0	0	3,782	-100.00%
Percentage HIP Members SNAP ABAWDs	0	0	0.7%	-0.7

Note:

All data July 2014 and following will be broken out according to the new DFR region structure effective July 1 2014.



DIVISION OF FAMILY RESOURCES

Monthly Management Report

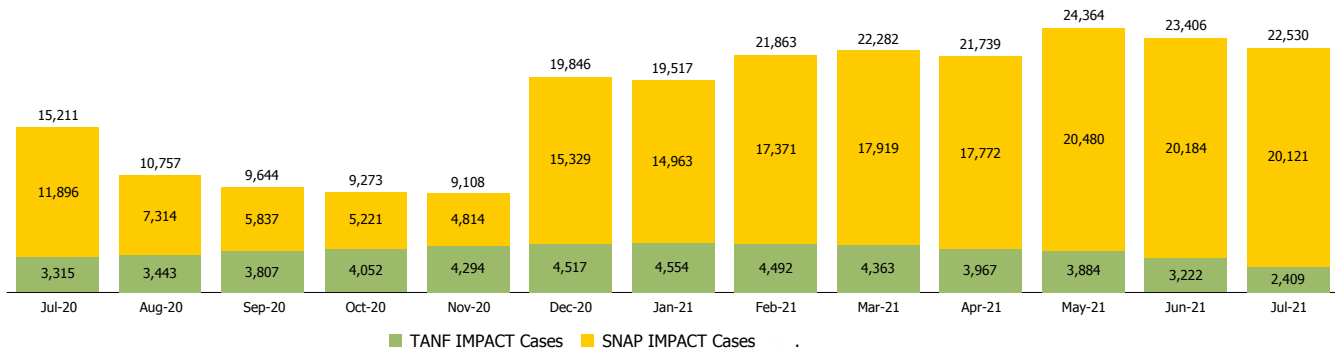
Reporting Month: July 2021

Location: Statewide

INDIANA MANPOWER PLACEMENT AND COMPREHENSIVE TRAINING (IMPACT)

	July 2021	June 2021	July 2020	Annual Change
Number of IMPACT cases	22,530	23,406	15,211	48.12%
Number of TANF IMPACT adults	2,409	3,222	3,315	-27.33%
Number of SNAP IMPACT Cases	20,121	20,184	11,896	69.14%
Total number of adults employed	2,209	1,929	1,235	78.87%
Number of TANF IMPACT adults newly employed (within past 30 days)	161	154	165	-2.42%
Number of SNAP IMPACT adults employed	2,048	1,775	1,070	91.40%
Total number of adults ineligible due to employment	2,461	2,349	10,115	-75.67%
Number of TANF adults ineligible due to employment	22	31	37	-40.54%
Number of SNAP adults ineligible due to employment	2,439	2,318	10,078	-75.80%

IMPACT Caseloads
(SNAP, TANF, Total Caseload)



Note:

All data July 2014 and following will be broken out according to the new DFR region structure effective July 1 2014.