



DIVISION OF FAMILY RESOURCES

Statewide Monthly Management Report January 2023

State of Indiana

Eric Holcomb
Governor

Family and Social Services Administration

Dan Rusyniak, MD
Secretary

Division of Family Resources

Adrienne Shields
Director

For questions regarding data on this report contact:
office.Communications@fssa.IN.gov



State of Indiana

Published February 2023



DIVISION OF FAMILY RESOURCES

Monthly Management Report

Reporting Month: January 2023

Location: Statewide

TEMPORARY ASSISTANCE FOR NEEDY FAMILIES (TANF)

Child-Only and One-Parent Families	January 2023	December 2022	January 2022	Annual Change
Number of families receiving TANF Grants	3,829	3,836	4,446	-13.88%
Total number of grant recipients	7,642	7,676	9,177	-16.73%
Number of adult grant recipients	829	827	1,156	-28.29%
Number of child grant recipients	6,813	6,849	8,021	-15.06%
Total payments	\$746,499	\$749,990	\$885,462	-15.69%
Average payment per case	\$194.96	\$195.51	\$199.16	-2.11%
Average payment per recipient	\$97.68	\$97.71	\$96.49	1.24%
Number of cases with benefits reduced to zero	93	102	151	-38.41%
Number of recipients with benefits reduced to zero	175	198	316	-44.62%
Number of adult recipients with benefit reduced to zero	23	32	70	-67.14%
Number of child recipients with benefit reduced to zero	152	166	246	-38.21%

Two-Parent Families	January 2023	December 2022	January 2022	Annual Change
Number of families receiving TANF Grants	585	507	271	115.87%
Total number of grant recipients	2,044	1,787	892	129.15%
Number of adult grant recipients	880	759	285	208.77%
Number of child grant recipients	1,164	1,028	607	91.76%
Total payments	\$173,999	\$150,931	\$75,213	131.34%
Average payment per case	\$297.43	\$297.69	\$277.54	7.17%
Average payment per recipient	\$85.13	\$84.46	\$84.32	0.96%
Number of cases with benefits reduced to zero	2	2	2	0.00%
Number of recipients with benefits reduced to zero	6	9	10	-40.00%
Number of adult recipients with benefit reduced to zero	4	4	4	0.00%
Number of child recipients with benefit reduced to zero	2	5	6	-66.67%

Note:

For August 2021, a one time payment of \$400 per recipient was included in the Total payments and Average payments. TANF section rules changed to reflect Federal reporting logic effective September 2021. For August 2022, a one-time payment of \$269 per recipient was included in the Total payments and Average payments.

Source:



DIVISION OF FAMILY RESOURCES

Monthly Management Report

Reporting Month: January 2023

Location: Statewide

TANF - APPLICATIONS

	January 2023	December 2022	January 2022	Annual Change
Number of Applications	7,371	6,451	3,890	89.49%



DIVISION OF FAMILY RESOURCES

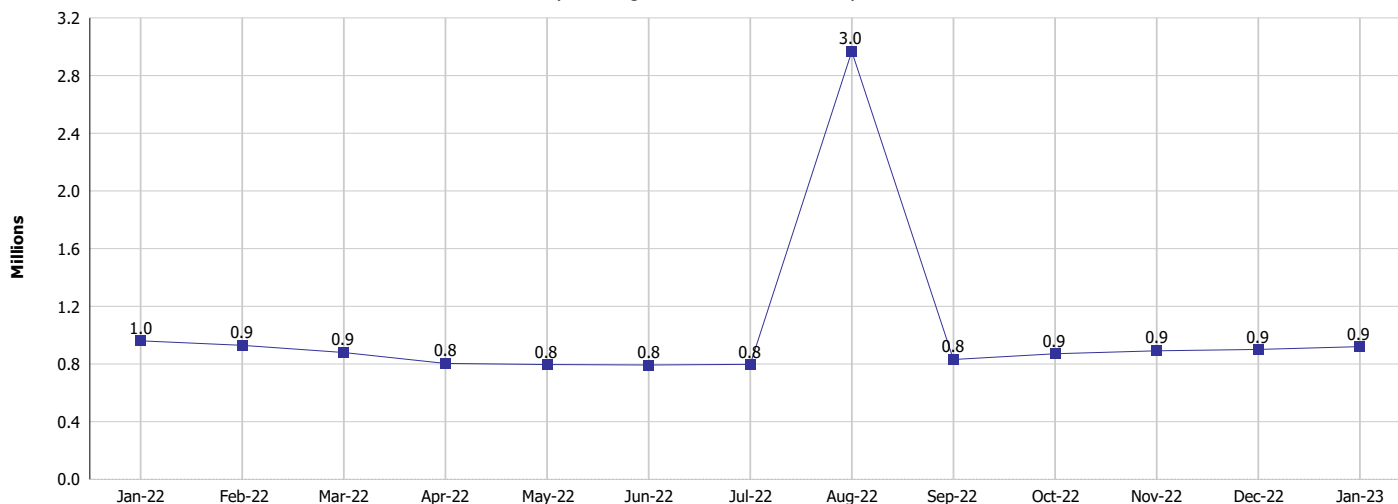
Monthly Management Report

Reporting Month: January 2023

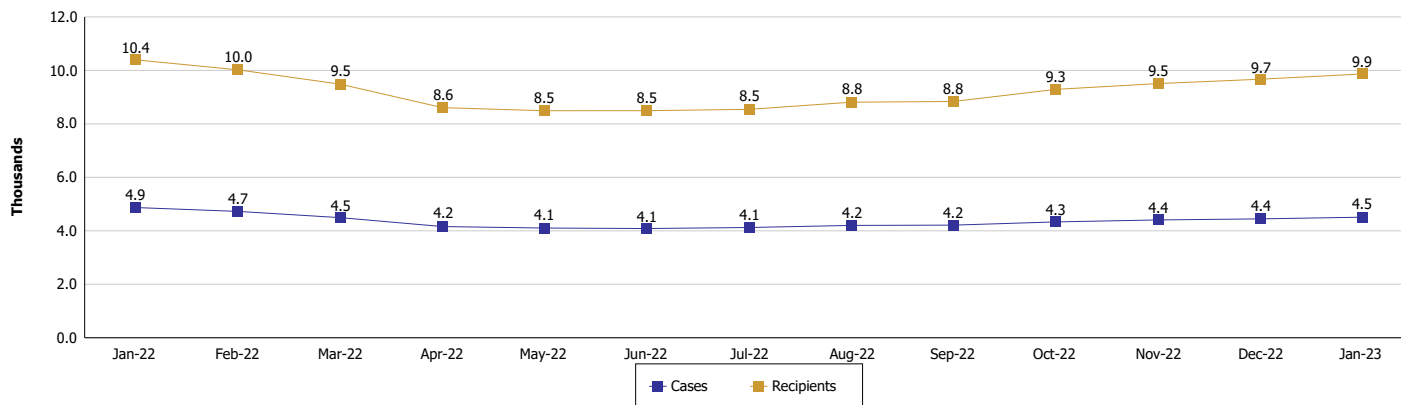
Location: Statewide

TEMPORARY ASSISTANCE FOR NEEDY FAMILIES (TANF)

TANF Cash Assistance (TANF Regular and TANF Two-Parent)



TANF Cases and Recipients (TANF Regular and TANF Two-Parent)



Note:

For August 2021, a one time payment of \$400 per recipient was included in the Total payments and Average payments. TANF section rules changed to reflect Federal reporting logic effective September 2021.

For August 2022, a one-time payment of \$269 per recipient was included in the Total payments and Average payments.



DIVISION OF FAMILY RESOURCES

Monthly Management Report

Reporting Month: January 2023

Location: Statewide

SUPPLEMENTAL NUTRITION ASSISTANCE PROGRAM (SNAP)

	January 2023	December 2022	January 2022	Annual Change
Total issuance	\$114,176,037	\$115,859,001	\$151,552,964	-24.66%
Number of households receiving SNAP benefits	280,821	283,304	284,837	-1.41%
Number of recipients	594,135	598,016	607,871	-2.26%
Average issuance per household	\$406.58	\$408.96	\$532.07	-23.59%
Average issuance per recipient	\$192.17	\$193.74	\$249.32	-22.92%
Number of Applications	44,248	36,913	23,886	85.25%



DIVISION OF FAMILY RESOURCES

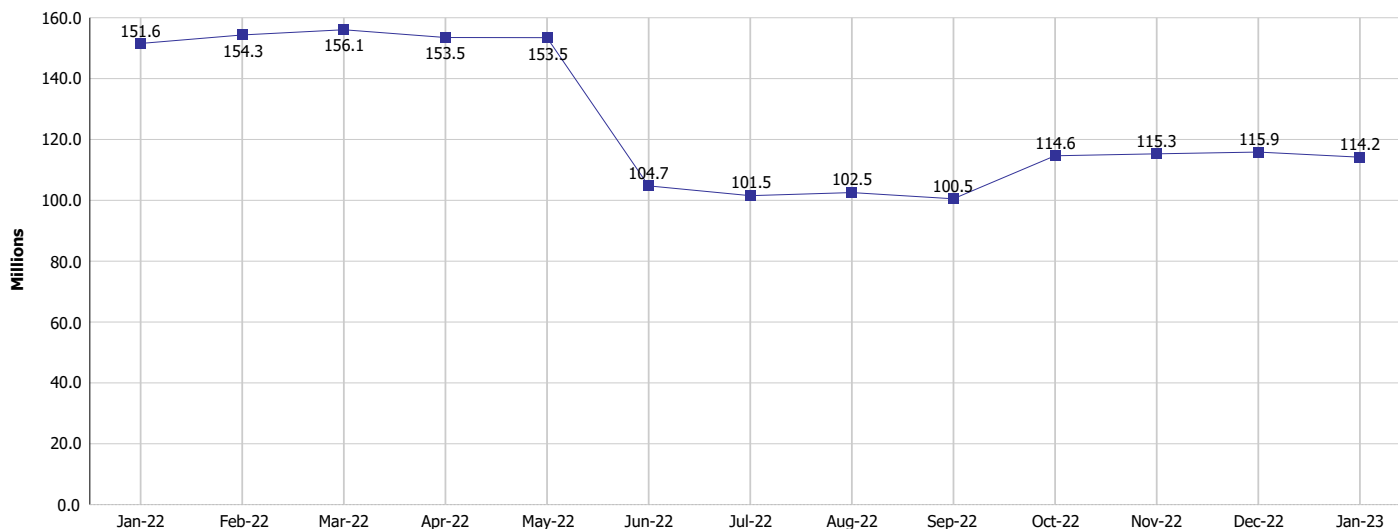
Monthly Management Report

Reporting Month: January 2023

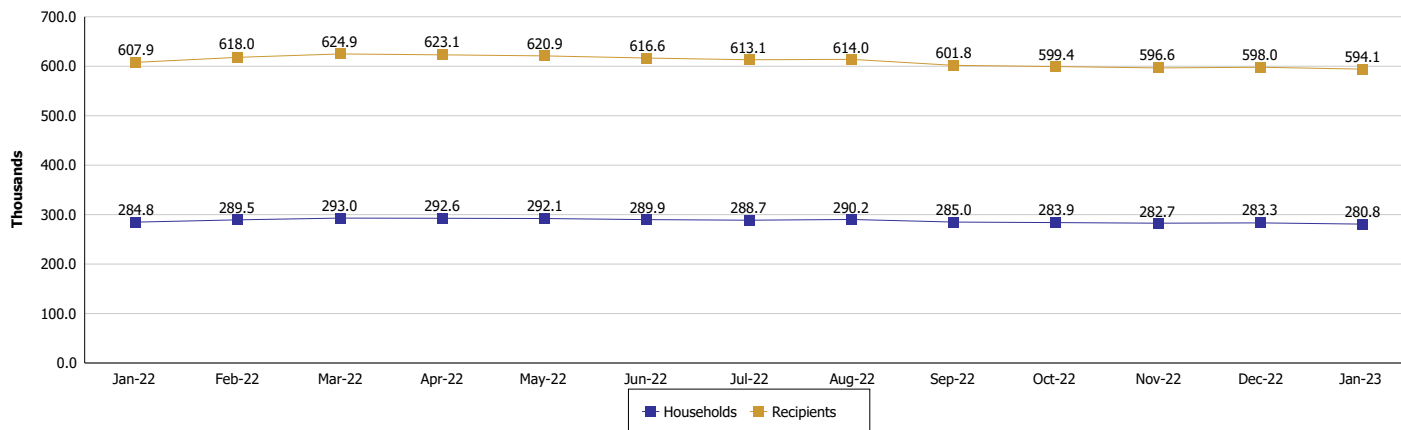
Location: Statewide

SUPPLEMENTAL NUTRITION ASSISTANCE PROGRAM (SNAP)

SNAP Issuance



SNAP Households and Recipients



Note:

Run Date: Feb 22, 2023



DIVISION OF FAMILY RESOURCES

Monthly Management Report

Reporting Month: January 2023

Location: Statewide

HIP 2.0 and SNAP

	January 2023	December 2022	January 2022	Annual Change
Total HIP 2.0 Members	845,380	834,597	751,379	12.51%
HIP Members also SNAP Recipients	179,710	179,990	182,071	-1.30%
Percentage HIP Members SNAP Recipients	21.3%	21.6%	24.2%	-2.97
HIP Members SNAP ABAWDs	12,175	12,558	0	0%
Percentage HIP Members SNAP ABAWDs	1.4%	1.5%	0	1.4

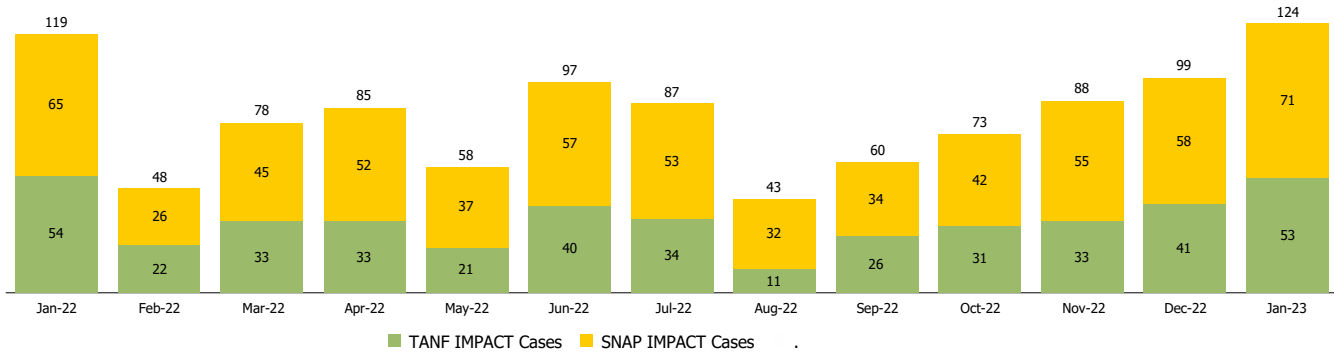
Monthly Management Report

Reporting Month: January 2023 Location: Statewide

INDIANA MANPOWER PLACEMENT AND COMPREHENSIVE TRAINING (IMPACT)

	January 2023	December 2022	January 2022	Annual Change
Number of IMPACT cases	124	99	119	4.20%
Number of TANF IMPACT adults	53	41	54	-1.85%
Number of SNAP IMPACT Cases	71	58	65	9.23%
Total number of adults employed	2,500	2,954	2,013	24.19%
Number of TANF IMPACT adults newly employed (within past 30 days)	39	41	51	-23.53%
Number of SNAP IMPACT adults employed	2,461	2,913	1,962	25.43%
Total number of adults ineligible due to employment	2,584	1,392	3,571	-27.64%
Number of TANF adults ineligible due to employment	20	24	8	150.00%
Number of SNAP adults ineligible due to employment	2,564	1,368	3,563	-28.04%

IMPACT Caseloads
(SNAP, TANF, Total Caseload)



Note: Effective January 2022, these numbers have been adjusted to reflect only those actually participating in IMPACT.