



DIVISION OF FAMILY RESOURCES

Statewide Monthly Management Report January 2022

State of Indiana

Eric Holcomb
Governor

Family and Social Services Administration

Dan Rusyniak, MD
Secretary

Division of Family Resources

Adrienne Shields
Director

For questions regarding data on this report contact:
office.Communications@fssa.IN.gov



State of Indiana

Published February 2022



DIVISION OF FAMILY RESOURCES

Monthly Management Report

Reporting Month: January 2022

Location: Statewide

TEMPORARY ASSISTANCE FOR NEEDY FAMILIES (TANF)

Child-Only and One-Parent Families	January 2022	December 2021	January 2021	Annual Change
Number of families receiving TANF Grants	4,446	4,687	7,816	-43.12%
Total number of grant recipients	9,177	9,753	17,900	-48.73%
Number of adult grant recipients	1,156	1,309	3,792	-69.51%
Number of child grant recipients	8,021	8,444	14,108	-43.15%
Total payments	\$885,462	\$940,964	\$1,646,696	-46.23%
Average payment per case	\$199.16	\$200.76	\$210.68	-5.47%
Average payment per recipient	\$96.49	\$96.48	\$91.99	4.88%
Number of cases with benefits reduced to zero	151	158	416	-63.70%
Number of recipients with benefits reduced to zero	316	338	1,058	-70.13%
Number of adult recipients with benefit reduced to zero	70	74	297	-76.43%
Number of child recipients with benefit reduced to zero	246	264	761	-67.67%

Two-Parent Families	January 2022	December 2021	January 2021	Annual Change
Number of families receiving TANF Grants	271	281	795	-65.91%
Total number of grant recipients	892	904	2,667	-66.55%
Number of adult grant recipients	285	295	867	-67.13%
Number of child grant recipients	607	609	1,800	-66.28%
Total payments	\$75,213	\$77,772	\$212,757	-64.65%
Average payment per case	\$277.54	\$276.77	\$267.62	3.71%
Average payment per recipient	\$84.32	\$86.03	\$79.77	5.70%
Number of cases with benefits reduced to zero	2	2	53	-96.23%
Number of recipients with benefits reduced to zero	10	8	204	-95.10%
Number of adult recipients with benefit reduced to zero	4	4	80	-95.00%
Number of child recipients with benefit reduced to zero	6	4	124	-95.16%

Note:

For August 2021, a one time payment of \$400 per recipient was included in the Total payments and Average payments.
 TANF section rules changed to reflect Federal reporting logic effective September 2021.

Source:



DIVISION OF FAMILY RESOURCES

Monthly Management Report

Reporting Month: January 2022

Location: Statewide

TANF - APPLICATIONS

	January 2022	December 2021	January 2021	Annual Change
Number of Applications	3,890	2,914	3,285	18.42%



DIVISION OF FAMILY RESOURCES

Monthly Management Report

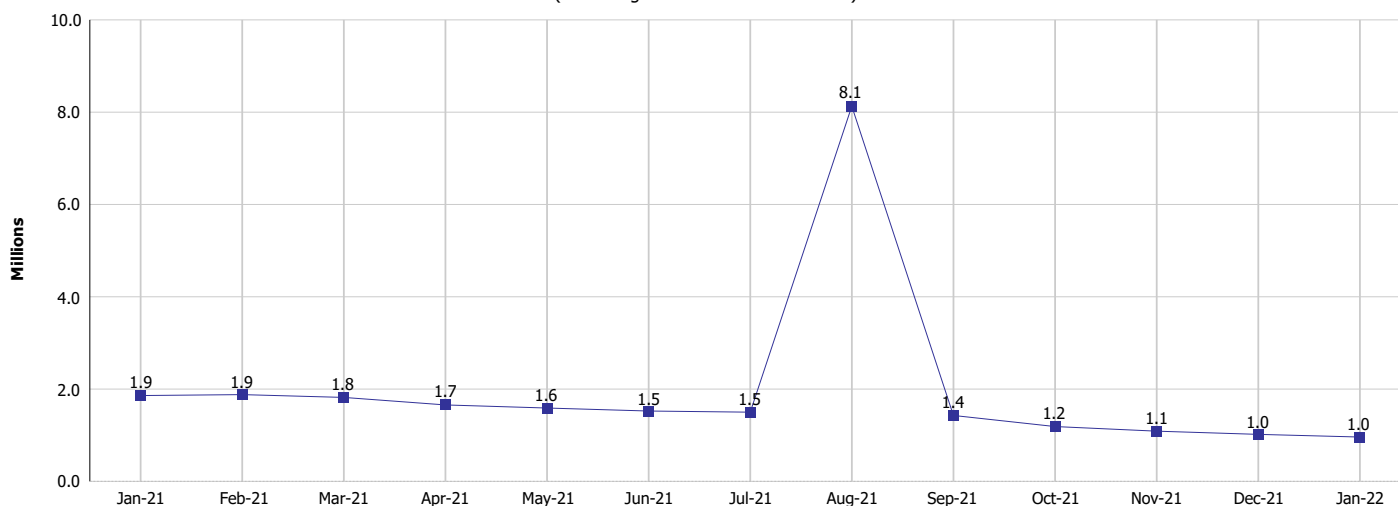
Reporting Month: January 2022

Location: Statewide

TEMPORARY ASSISTANCE FOR NEEDY FAMILIES (TANF)

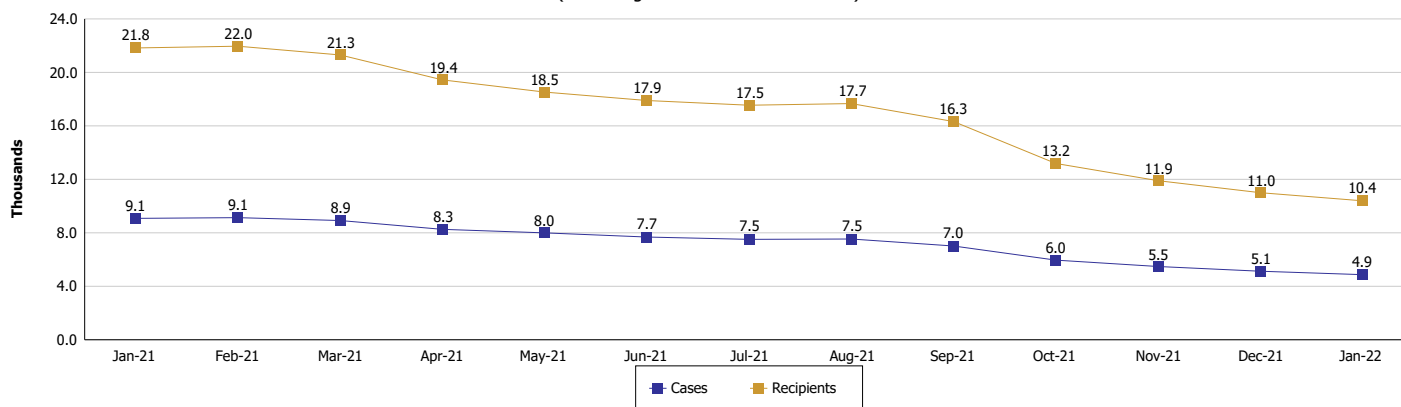
TANF Cash Assistance

(TANF Regular and TANF Two-Parent)



TANF Cases and Recipients

(TANF Regular and TANF Two-Parent)



Note:

For August 2021, a one time payment of \$400 per recipient was included in the Total payments and Average payments. TANF section rules changed to reflect Federal reporting logic effective September 2021.



DIVISION OF FAMILY RESOURCES

Monthly Management Report

Reporting Month: January 2022

Location: Statewide

SUPPLEMENTAL NUTRITION ASSISTANCE PROGRAM (SNAP)

	January 2022	December 2021	January 2021	Annual Change
Total issuance	\$151,552,964	\$151,732,984	\$142,817,607	6.12%
Number of households receiving SNAP benefits	284,837	286,835	312,811	-8.94%
Number of recipients	607,871	611,880	674,297	-9.85%
Average issuance per household	\$532.07	\$528.99	\$456.56	16.54%
Average issuance per recipient	\$249.32	\$247.98	\$211.80	17.71%
Number of Applications	23,886	17,914	17,165	39.16%



DIVISION OF FAMILY RESOURCES

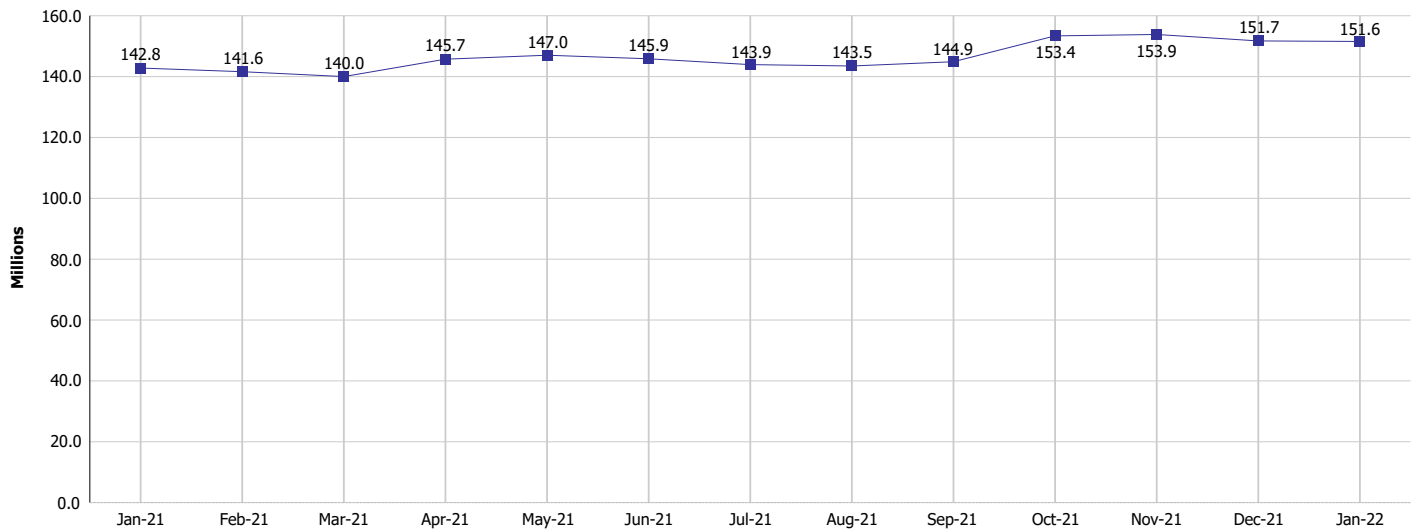
Monthly Management Report

Reporting Month: January 2022

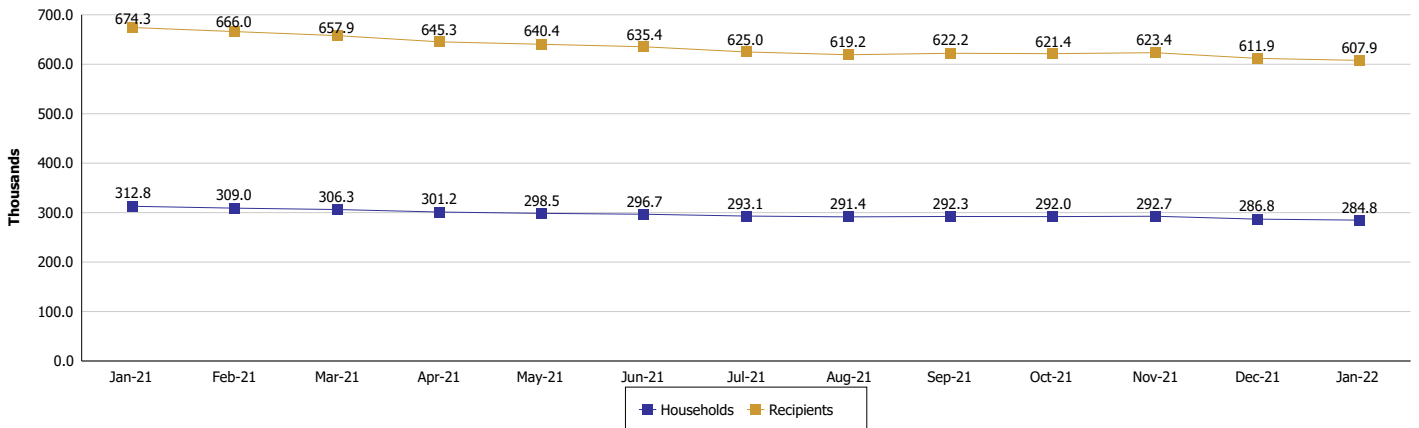
Location: Statewide

SUPPLEMENTAL NUTRITION ASSISTANCE PROGRAM (SNAP)

SNAP Issuance



SNAP Households and Recipients



Note:

Run Date: Feb 22, 2022



DIVISION OF FAMILY RESOURCES

Monthly Management Report

Reporting Month: January 2022

Location: Statewide

HIP 2.0 and SNAP

	January 2022	December 2021	January 2021	Annual Change
Total HIP 2.0 Members	751,379	739,798	636,641	18.02%
HIP Members also SNAP Recipients	182,071	181,996	198,415	-8.24%
Percentage HIP Members SNAP Recipients	24.2%	24.6%	31.2%	-6.93
HIP Members SNAP ABAWDs	0	0	0	0%
Percentage HIP Members SNAP ABAWDs	0	0	0	0.0



DIVISION OF FAMILY RESOURCES

Monthly Management Report

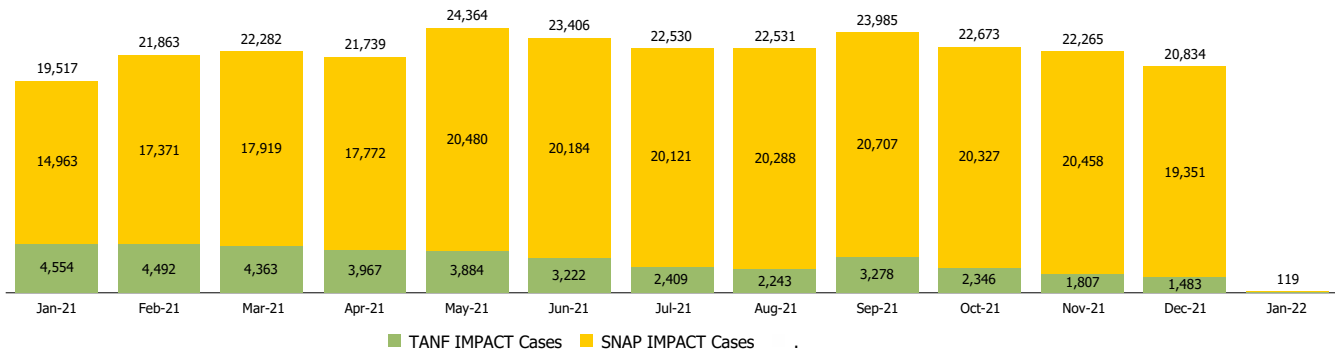
Reporting Month: January 2022

Location: Statewide

INDIANA MANPOWER PLACEMENT AND COMPREHENSIVE TRAINING (IMPACT)

	January 2022	December 2021	January 2021	Annual Change
Number of IMPACT cases	119	20,834	19,517	-99.39%
Number of TANF IMPACT adults	54	1,483	4,554	-98.81%
Number of SNAP IMPACT Cases	65	19,351	14,963	-99.57%
Total number of adults employed	2,013	2,005	1,853	8.63%
Number of TANF IMPACT adults newly employed (within past 30 days)	51	48	159	-67.92%
Number of SNAP IMPACT adults employed	1,962	1,957	1,694	15.82%
Total number of adults ineligible due to employment	3,571	2,453	3,413	4.63%
Number of TANF adults ineligible due to employment	8	13	59	-86.44%
Number of SNAP adults ineligible due to employment	3,563	2,440	3,354	6.23%

IMPACT Caseloads
(SNAP, TANF, Total Caseload)



Note:

Effective January 2022, these numbers have been adjusted to reflect only those actually participating in IMPACT.