



## DIVISION OF FAMILY RESOURCES

# Monthly Management Report December 2020

### State of Indiana

Eric Holcomb  
Governor

### Family and Social Services Administration

Jennifer Sullivan, M.D.  
Secretary

### Division of Family Resources

Adrienne Shields  
Director

For questions regarding data on this report contact:  
[office.Communications@fssa.IN.gov](mailto:office.Communications@fssa.IN.gov)



## State of Indiana

Published January 2021



## DIVISION OF FAMILY RESOURCES

### Monthly Management Report

Reporting Month: December 2020

Location: Statewide

#### TEMPORARY ASSISTANCE FOR NEEDY FAMILIES (TANF)

Child-Only and One-Parent Families	Dec 31, 2020	November 2020	December 2019	Annual Change
Number of families receiving TANF Grants	7,842	7,690	5,179	51.42%
Total number of grant recipients	17,931	17,466	10,827	65.61%
Number of adult grant recipients	3,800	3,664	1,456	160.99%
Number of child grant recipients	14,131	13,802	9,371	50.80%
Total payments	\$1,647,599	\$1,617,230	\$1,012,274	62.76%
Average payment per case	\$210.10	\$210.30	\$195.46	7.49%
Average payment per recipient	\$91.89	\$92.59	\$93.50	-1.72%
Number of cases with benefits reduced to zero	410	342	80	412.50%
Number of recipients with benefits reduced to zero	1,019	797	158	544.94%
Number of adult recipients with benefit reduced to zero	277	227	36	669.44%
Number of child recipients with benefit reduced to zero	742	570	122	508.20%

Two-Parent Families	Dec 31, 2020	November 2020	December 2019	Annual Change
Number of families receiving TANF Grants	766	720	232	230.17%
Total number of grant recipients	2,612	2,465	856	205.14%
Number of adult grant recipients	855	812	306	179.41%
Number of child grant recipients	1,757	1,653	550	219.45%
Total payments	\$206,344	\$192,995	\$51,831	298.11%
Average payment per case	\$269.38	\$268.05	\$223.41	20.58%
Average payment per recipient	\$79.00	\$78.29	\$60.55	30.47%
Number of cases with benefits reduced to zero	45	50	4	1,025.00%
Number of recipients with benefits reduced to zero	180	196	21	757.14%
Number of adult recipients with benefit reduced to zero	71	77	7	914.29%
Number of child recipients with benefit reduced to zero	109	119	14	678.57%

**Note:**

All data July 2014 and following will be broken out according to the new DFR region structure effective July 1 2014.

Source:



## DIVISION OF FAMILY RESOURCES

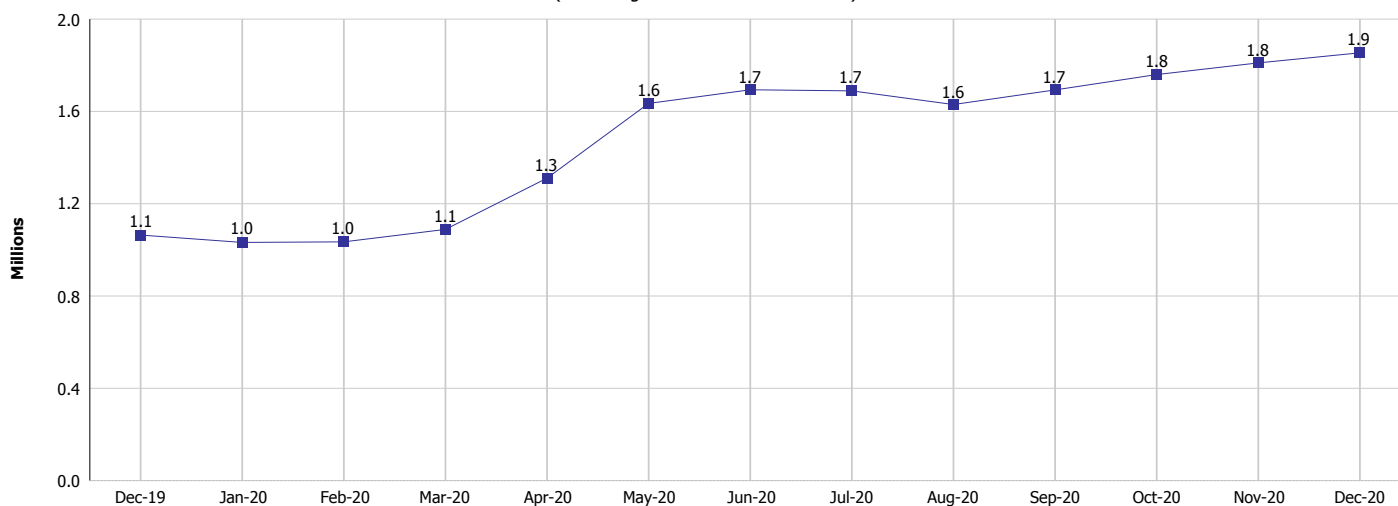
### Monthly Management Report

Reporting Month: December 2020

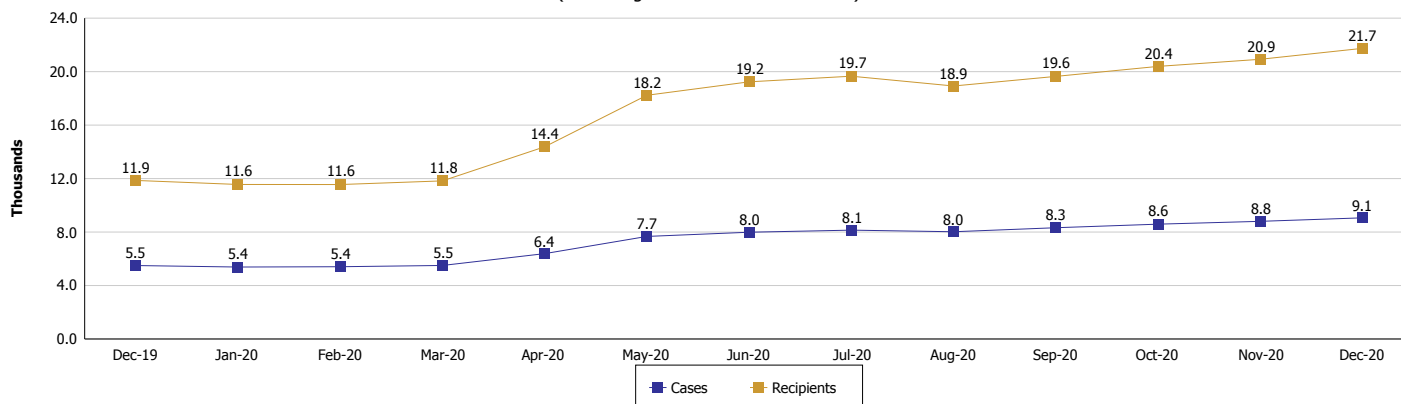
Location: Statewide

#### TEMPORARY ASSISTANCE FOR NEEDY FAMILIES (TANF)

**TANF Cash Assistance**  
(TANF Regular and TANF Two-Parent)



**TANF Cases and Recipients**  
(TANF Regular and TANF Two-Parent)



**Note:**

All data July 2014 and following will be broken out according to the new DFR region structure effective July 1 2014.

**Monthly Management Report**

Reporting Month: December 2020 Location: Statewide

**SUPPLEMENTAL NUTRITION ASSISTANCE PROGRAM (SNAP)**

	December 2020	November 2020	December 2019	Annual Change
Total issuance	\$124,914,906	\$119,463,671	\$67,420,420	85.28%
Number of households receiving SNAP benefits	306,899	294,168	254,447	20.61%
Number of recipients	663,854	635,829	564,117	17.68%
Average issuance per household	\$407.02	\$406.11	\$264.97	53.61%
Average issuance per recipient	\$188.17	\$187.89	\$119.51	57.44%

**Note:**  
All data July 2014 and following will be broken out according to the new DFR region structure effective July 1 2014.

**SNAP ERROR RATES**

	June 2020	Cumulative FFY 2019
FFY Cumulative Positive Error Rate	7.65%	8.30%
Monthly Positive Error Rate	9.49%	NA
FFY Cumulative Negative Error Rate	45.55%	40.03%
Monthly Negative Error Rate	60.00%	NA

**Note:**  
All data July 2014 and following will be broken out according to the new DFR region structure effective July 1 2014.

**Notes:**  
Reporting periods for SNAP Error Rates reflect the review period and Federal submission deadline. The month reported above is the month in which an action was taken included in the review sample.  
Positive actions are those which produced an issuance of benefits to a household. Negative actions are those which closed or denied benefits to a household.  
Error Rate data is reported by the state before the federal agency has accepted and finalized the results. This rate is subject to revision based upon: completion and submission of outstanding reviews; final review corrections; and completion of previously dropped reviews. Monthly numbers are taken from end-of-month totals. The error status of cases may be changed by the State or Federal Review process, which would cause a change that might not be reflected in the previous monthly numbers.



# DIVISION OF FAMILY RESOURCES

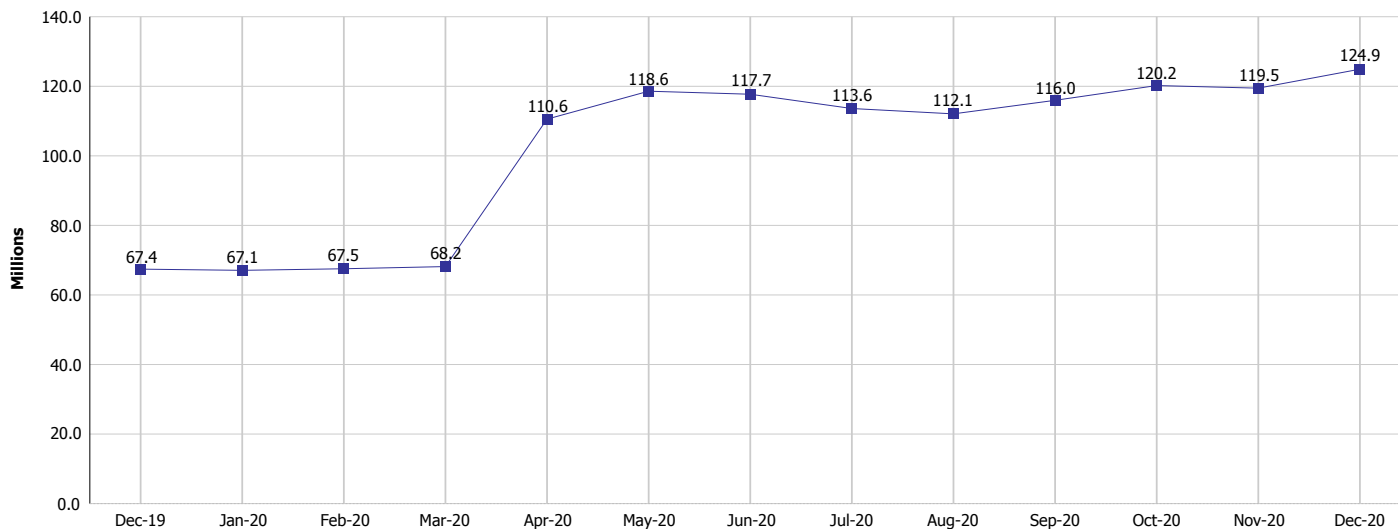
## Monthly Management Report

Reporting Month: December 2020

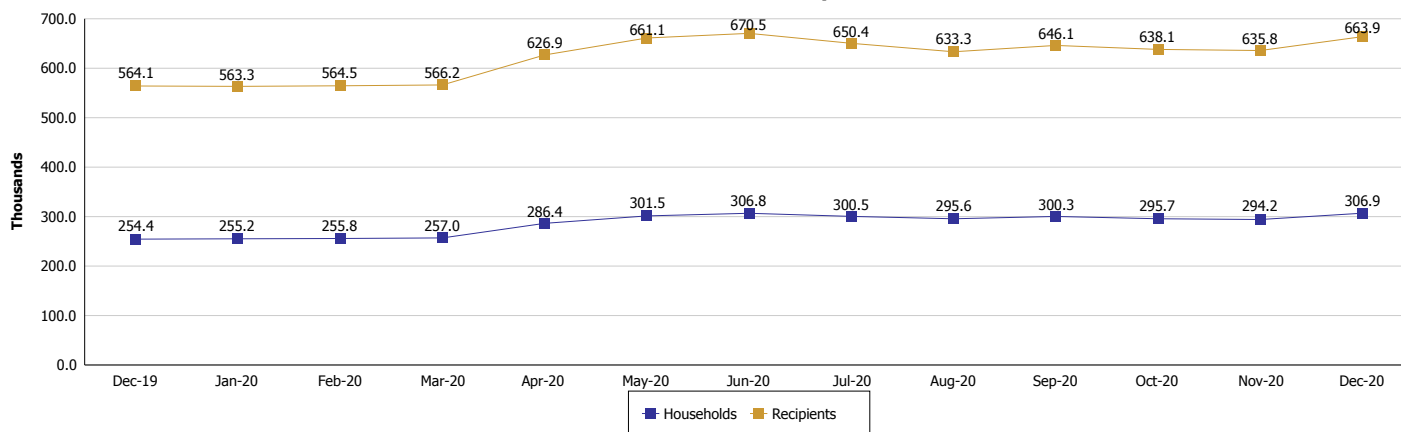
Location: Statewide

### SUPPLEMENTAL NUTRITION ASSISTANCE PROGRAM (SNAP)

#### SNAP Issuance



#### SNAP Households and Recipients



**Note:**

All data July 2014 and following will be broken out according to the new DFR region structure effective July 1 2021.



## DIVISION OF FAMILY RESOURCES

### Monthly Management Report

Reporting Month: December 2020

Location: Statewide

#### HIP 2.0 and SNAP

	December 2020	November 2020	December 2019	Annual Change
Total HIP 2.0 Members	623,595	600,736	433,159	43.96%
HIP Members also SNAP Recipients	194,451	183,150	138,447	40.45%
Percentage HIP Members SNAP Recipients	31.2%	30.5%	32.0%	-0.78
HIP Members SNAP ABAWDs	0	0	3,107	-100.00%
Percentage HIP Members SNAP ABAWDs	0	0	0.7%	-0.7

**Note:**

All data July 2014 and following will be broken out according to the new DFR region structure effective July 1 2014.



## DIVISION OF FAMILY RESOURCES

### Monthly Management Report

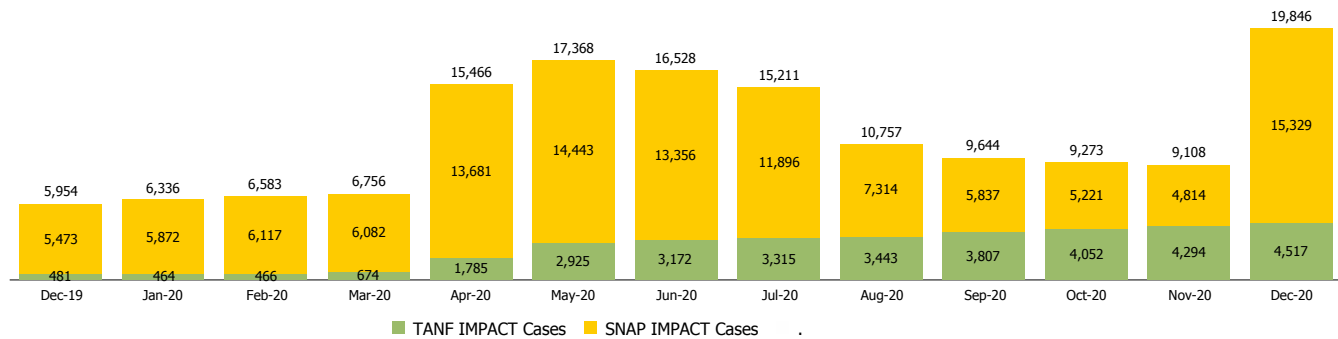
Reporting Month: December 2020

Location: Statewide

#### INDIANA MANPOWER PLACEMENT AND COMPREHENSIVE TRAINING (IMPACT)

	December 2020	November 2020	December 2019	Annual Change
Number of IMPACT cases	19,846	9,108	5,954	233.32%
Number of TANF IMPACT adults	4,517	4,294	481	839.09%
Number of SNAP IMPACT Cases	15,329	4,814	5,473	180.08%
Total number of adults employed	1,818	551	732	148.36%
Number of TANF IMPACT adults newly employed (within past 30 days)	152	153	77	97.40%
Number of SNAP IMPACT adults employed	1,666	398	655	154.35%
Total number of adults ineligible due to employment	2,126	2,397	4,194	-49.31%
Number of TANF adults ineligible due to employment	47	48	11	327.27%
Number of SNAP adults ineligible due to employment	2,079	2,349	4,183	-50.30%

**IMPACT Caseloads**  
(SNAP, TANF, Total Caseload)



**Note:**

All data July 2014 and following will be broken out according to the new DFR region structure effective July 1 2014.