



## DIVISION OF FAMILY RESOURCES

# Statewide Monthly Management Report December 2023

### State of Indiana

Eric Holcomb  
Governor

### Family and Social Services Administration

Dan Rusyniak, MD  
Secretary

### Division of Family Resources

Adrienne Shields  
Director

For questions regarding data on this report contact:  
[office.Communications@fssa.IN.gov](mailto:office.Communications@fssa.IN.gov)



## State of Indiana

Published January 2024



## DIVISION OF FAMILY RESOURCES

### Monthly Management Report

Reporting Month: December 2023

Location: Statewide

#### TEMPORARY ASSISTANCE FOR NEEDY FAMILIES (TANF)

Child-Only and One-Parent Families	December 2023	November 2023	December 2022	Annual Change
Number of families receiving TANF Grants	4,676	4,594	3,836	21.90%
Total number of grant recipients	10,104	9,871	7,676	31.63%
Number of adult grant recipients	1,662	1,615	827	100.97%
Number of child grant recipients	8,442	8,256	6,849	23.26%
Total payments	\$1,069,856	\$1,044,621	\$749,990	42.65%
Average payment per case	\$228.80	\$227.39	\$195.51	17.02%
Average payment per recipient	\$105.88	\$105.83	\$97.71	8.37%
Number of cases with benefits reduced to zero	128	128	102	25.49%
Number of recipients with benefits reduced to zero	274	272	198	38.38%
Number of adult recipients with benefit reduced to zero	29	30	32	-9.38%
Number of child recipients with benefit reduced to zero	245	242	166	47.59%

Two-Parent Families	December 2023	November 2023	December 2022	Annual Change
Number of families receiving TANF Grants	966	972	507	90.53%
Total number of grant recipients	3,481	3,509	1,787	94.80%
Number of adult grant recipients	1,930	1,943	759	154.28%
Number of child grant recipients	1,551	1,566	1,028	50.88%
Total payments	\$327,024	\$330,704	\$150,931	116.67%
Average payment per case	\$338.53	\$340.23	\$297.69	13.72%
Average payment per recipient	\$93.95	\$94.24	\$84.46	11.23%
Number of cases with benefits reduced to zero	7	9	2	250.00%
Number of recipients with benefits reduced to zero	30	34	9	233.33%
Number of adult recipients with benefit reduced to zero	14	18	4	250.00%
Number of child recipients with benefit reduced to zero	16	16	5	220.00%

**Note:**

For August 2021, a one time payment of \$400 per recipient was included in the Total payments and Average payments. TANF section rules changed to reflect Federal reporting logic effective September 2021. For August 2022, a one-time payment of \$269 per recipient was included in the Total payments and Average payments.

Source:



## DIVISION OF FAMILY RESOURCES

### Monthly Management Report

Reporting Month: December 2023

Location: Statewide

#### TANF - APPLICATIONS

	December 2023	November 2023	December 2022	Annual Change
<b>Number of Applications</b>	7,038	7,243	6,451	9.10%



# DIVISION OF FAMILY RESOURCES

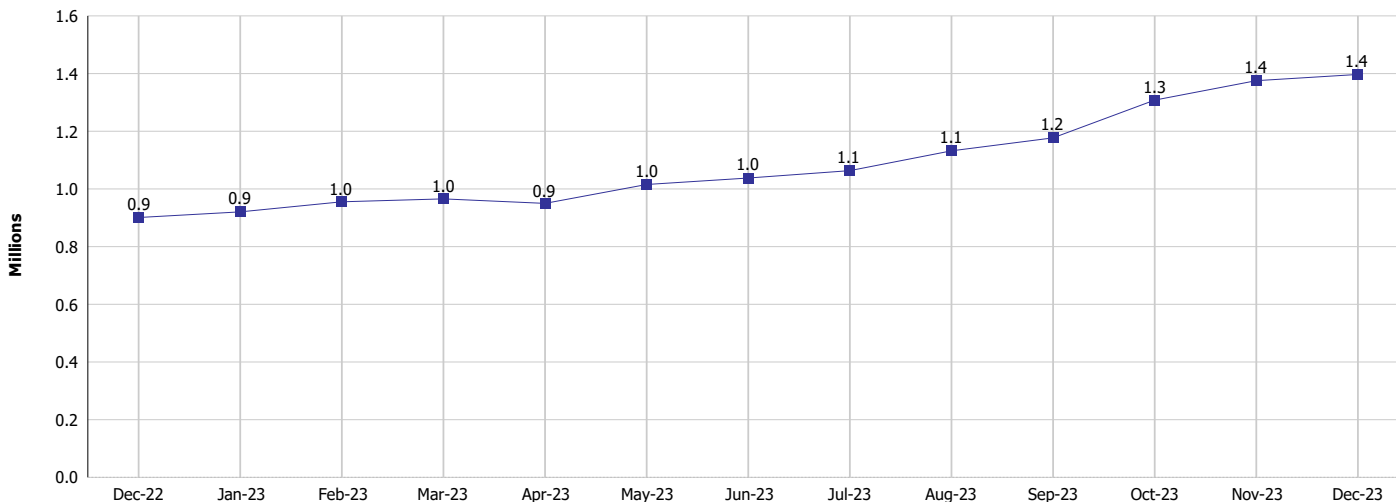
## Monthly Management Report

Reporting Month: December 2023

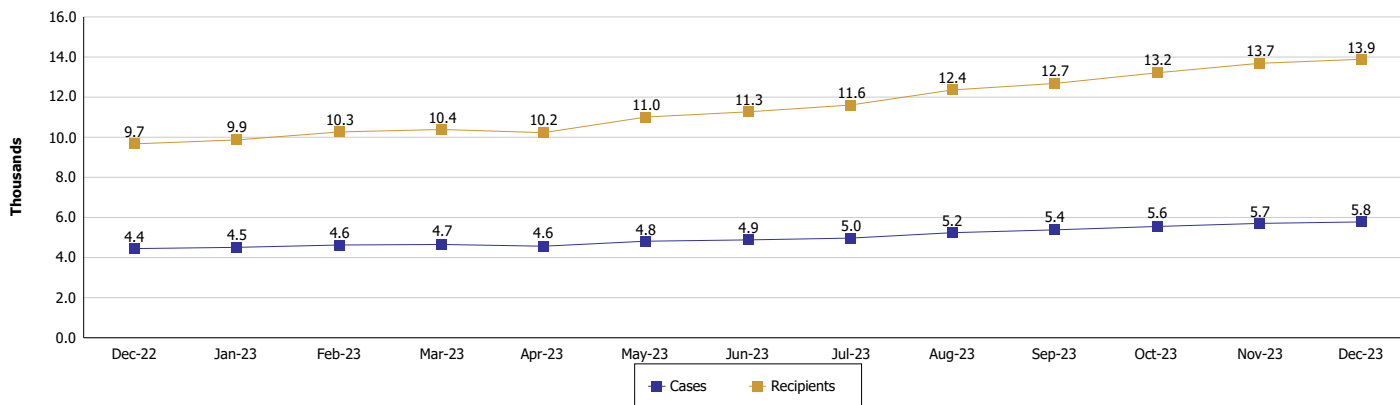
Location: Statewide

### TEMPORARY ASSISTANCE FOR NEEDY FAMILIES (TANF)

#### TANF Cash Assistance (TANF Regular and TANF Two-Parent)



#### TANF Cases and Recipients (TANF Regular and TANF Two-Parent)



**Note:**

For August 2021, a one time payment of \$400 per recipient was included in the Total payments and Average payments. TANF section rules changed to reflect Federal reporting logic effective September 2021. For August 2022, a one-time payment of \$269 per recipient was included in the Total payments and Average payments.



## DIVISION OF FAMILY RESOURCES

### Monthly Management Report

Reporting Month: December 2023

Location: Statewide

#### SUPPLEMENTAL NUTRITION ASSISTANCE PROGRAM (SNAP)

	December 2023	November 2023	December 2022	Annual Change
Total issuance	\$124,160,252	\$123,472,533	\$115,859,001	7.16%
Number of households receiving SNAP benefits	294,433	292,620	283,304	3.93%
Number of recipients	616,385	613,872	598,016	3.07%
Average issuance per household	\$421.69	\$421.96	\$408.96	3.11%
Average issuance per recipient	\$201.43	\$201.14	\$193.74	3.97%
Number of Applications	37,293	41,188	36,913	1.03%



# DIVISION OF FAMILY RESOURCES

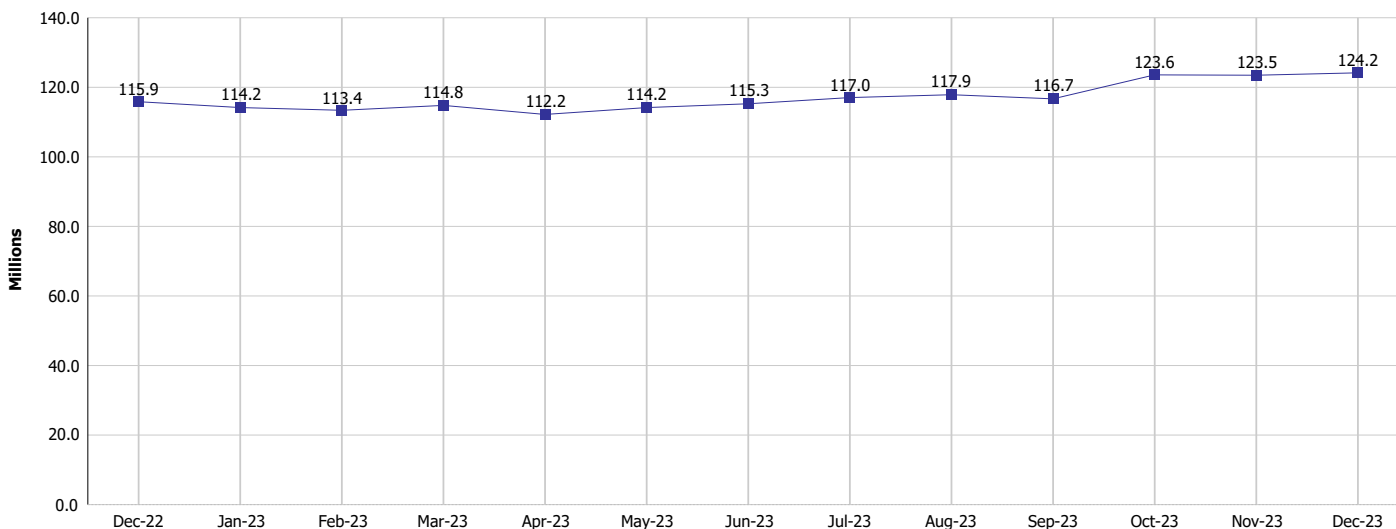
## Monthly Management Report

Reporting Month: December 2023

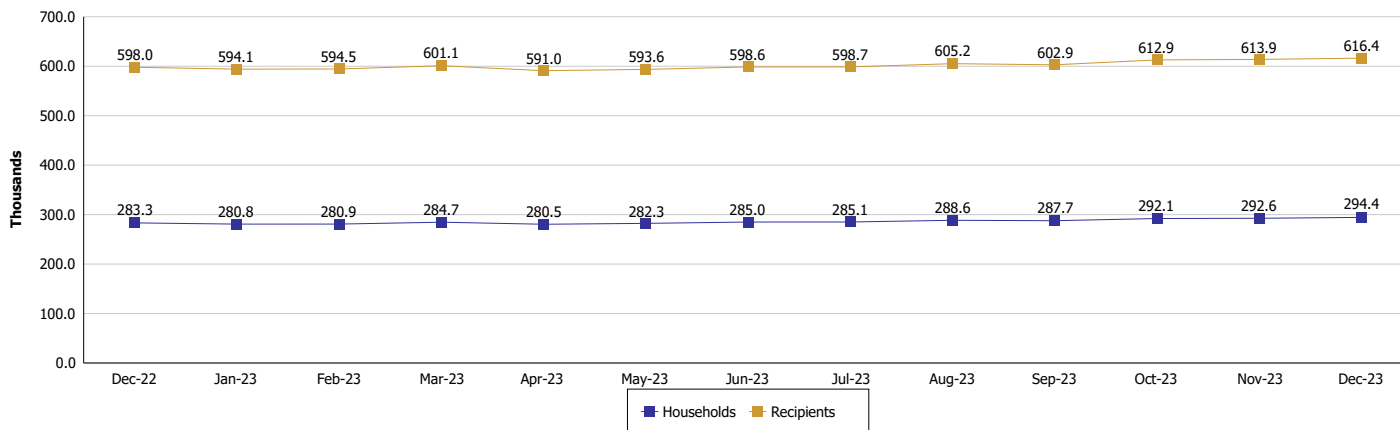
Location: Statewide

### SUPPLEMENTAL NUTRITION ASSISTANCE PROGRAM (SNAP)

#### SNAP Issuance



#### SNAP Households and Recipients



**Note:**

Run Date: Jan 12, 2024



## DIVISION OF FAMILY RESOURCES

### Monthly Management Report

Reporting Month: December 2023

Location: Statewide

#### HIP 2.0 and SNAP

	December 2023	November 2023	December 2022	Annual Change
Total HIP 2.0 Members	779,036	787,073	834,597	-6.66%
HIP Members also SNAP Recipients	184,740	184,532	179,990	2.64%
Percentage HIP Members SNAP Recipients	23.7%	23.4%	21.6%	2.15
HIP Members SNAP ABAWDs	12,445	12,332	12,558	-0.90%
Percentage HIP Members SNAP ABAWDs	1.6%	1.6%	1.5%	0.1

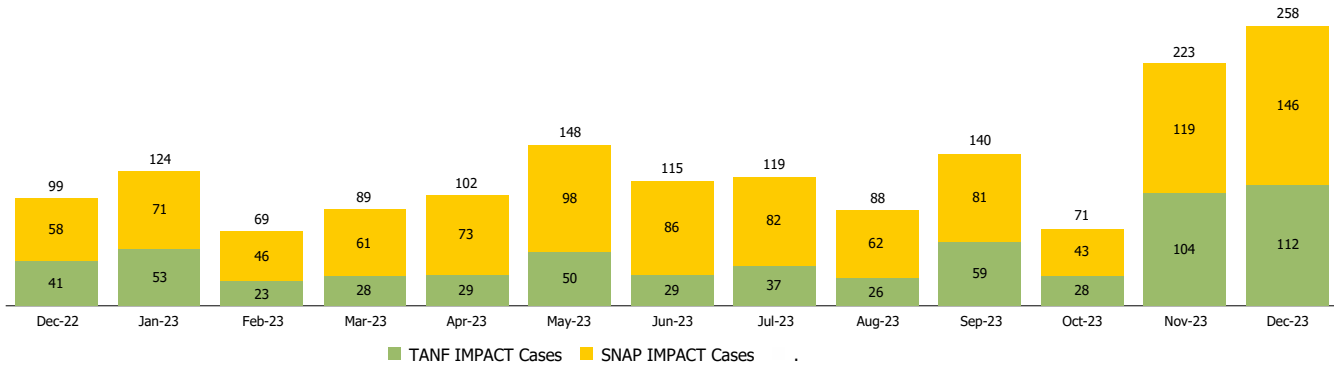
**Monthly Management Report**

<b>Reporting Month: December 2023</b>	<b>Location: Statewide</b>
---------------------------------------	----------------------------

**INDIANA MANPOWER PLACEMENT AND COMPREHENSIVE TRAINING (IMPACT)**

	<b>December 2023</b>	<b>November 2023</b>	<b>December 2022</b>	<b>Annual Change</b>
Number of IMPACT cases	258	223	99	160.61%
Number of TANF IMPACT adults	112	104	41	173.17%
Number of SNAP IMPACT Cases	146	119	58	151.72%
Total number of adults employed	1,283	1,418	2,954	-56.57%
Number of TANF IMPACT adults newly employed (within past 30 days)	31	44	41	-24.39%
Number of SNAP IMPACT adults employed	1,252	1,374	2,913	-57.02%
Total number of adults ineligible due to employment	1,687	1,668	1,392	21.19%
Number of TANF adults ineligible due to employment	37	30	24	54.17%
Number of SNAP adults ineligible due to employment	1,650	1,638	1,368	20.61%

**IMPACT Caseloads**  
(SNAP, TANF, Total Caseload)



**Note:** Effective January 2022, these numbers have been adjusted to reflect only those actually participating in IMPACT.