



HCBS Direct Care Training



Table of Contents

1.HCBS Settings Rule -- THE WHY

2.Institutional Settings vs. Non-institutional Settings

3.The difference between SNF & AL

4.Community Integration

5.HCBS impacts day to day operations

6.Resources for staff

7.Q&A



HCBS Setting's Rule - THE WHY



The WHY?

- What is the setting's rule?
 - Federal Rule created by CMS
 - Individuals utilizing Medicaid Waiver
 - Ensuring right's, choices, options, and opportunities.
- Who is involved in the care plans and decisions?
 - The recipient
 - Power of attorney
 - Provider
- Case managers, nurses, and other direct care staff members are here to help the individual receiving services, by assisting in setting goals and making choices that are meaningful to the individual.



Institutional Settings vs. Non-institutional Settings



Institutional Settings

- Long term care in skilled nursing facility or nursing home
- Total care of the individual
- Extended care devoted to take care of sick individuals.
- Eligibility of Medicaid may be covered differently
- This level of care is designed for individuals who live with mental, physical, and or development disabilities.



Non-Institutional Settings

- An entity with a Medicaid provider agreement other than hospital, or long-term care nursing facility.
- In a private dwelling not an institution or commercial establishment.
- Care is usually given by non-licensed professionals
- Service can be provided in own home.
- More affordable than an Institutional setting.



Skilled Nursing Facilities vs. Assisted Living Facilities



Skilled Nursing Facilities

- Skilled nursing is an inpatient medical treatment and rehabilitation facility with trained medical staff.
- They provide therapy whether it is speech, physical, or IV.
- Are not considered a long-term residence but can be depending on the condition of the individual's health.
- Have staff that is trained for accident or illness from which the individual will need to recover.
- Skilled nursing has a medical and clinical like atmosphere.



Assisted Living Facilities

- Assisted living is for an individual that may need assistance with day-to-day tasks but are still independent.
- These task could range from bathing, dressing, cleaning, and laundry, and medications.
- Is for individuals that cannot live entirely alone.
- The different qualifications to live in an assisted living facility are, being mobile, using a cane, walker or wheelchair.
- They do not need the medical care like a SNF provides.



Community Integration



Community Integration

- The recipient should feel "at Home" whether it be Assisted Living, Adult Day, or other, this is a huge life change.
- Giving individuals the choice to come and go into the community as they please, while also bringing the community to them. Ex: Bring them to church or bring church services to them.
- How can you help individuals be more integrated with their community?
 - Getting to know them
 - Provide opportunities and resources
 - Facilities and homes can bring the community to them as well.



HCBS Impacts Day to Day Operations



Interactions when Providing Services

PRIVACY, RESPECT, & DIGNITY

- From caregivers to teachers, companions, managers, confidantes, advocates
- Medicine distribution
- Assistance with grooming and dressing
- Refraining from "pet names" (hon, sweetie, love, numbers etc.)

Interactions when NOT Providing Services



PRIVACY, RESPECT, AND DIGNITY

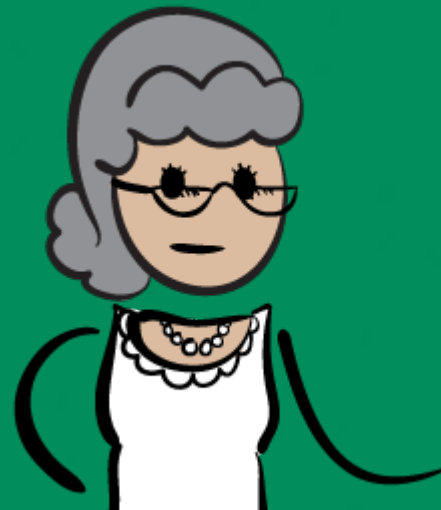
- From caregivers, to advocates, confidantes, resources
- Protected Health Information
 - Refraining from discussing clients' information in public spaces
- Respecting individual's choices
 - Assistance vs. Coercion
 - Responsibilities come with risk



A Day in the Life

A Day in the Life of an Individual with Medicaid

Gertrude: Lives with Chronic Pain





Resources for Direct Care Staff

- CMS (Centers for Medicare & Medicaid Services) <https://www.cms.gov/>
- Department of Labor <https://www.dol.gov/>
- Indiana Department of Health/ Division of LongTerm Care <https://www.in.gov/health/long-term-care-nursing-homes/>
- PHI(Paraprofessional Healthcare Institute) National - PHI works to ensure quality care for older adults and people with disabilities by creating quality jobs for direct care workers. <https://www.phinational.org/>
- NADSP (National Alliance for Direct Support Professionals)- strives to elevate the status of direct support professionals. <https://nadsp.org>



Questions & Answer