



INDIANA
DEPARTMENT *of*
EDUCATION

Choice Scholarship Program Annual Report

Participation & Payment Data:
2023-2024

Indiana Department of Education

100 N. Senate Ave.

Indianapolis, IN 46204



in.gov/doe



Table of Contents

ELIGIBILITY.....	3
STUDENT ELIGIBILITY CRITERIA.....	3
INCOME ELIGIBILITY CRITERIA.....	3
STUDENT AND SCHOOL PARTICIPATION.....	4
PARTICIPATION BY GRADE LEVEL.....	6
PARTICIPATION BY GENDER.....	8
PARTICIPATION BY ETHNICITY.....	8
PARTICIPATION BY GEOGRAPHIC AREA.....	10
PARTICIPATION BY PRIOR INDIANA PUBLIC SCHOOL ATTENDANCE.....	11
SPECIAL EDUCATION.....	12
RETENTION.....	14
PARTICIPANT RETENTION DURING THE SCHOOL YEAR.....	14
PARTICIPANT RETENTION BETWEEN SCHOOL YEARS.....	14
AWARDS.....	15
CALCULATION OF AWARD AMOUNT.....	15
AWARDS BY TYPE.....	15
AWARD AMOUNT BY GRADE LEVEL.....	19
AWARDS BY PUBLIC SCHOOL CORPORATION OF LEGAL SETTLEMENT.....	20
AWARDS BY PARTICIPATING CHOICE SCHOOL.....	21
CHOICE SCHOLARSHIP PAYMENTS.....	23
2023-2024 Choice Student Summary.....	23
ADDITIONAL INFORMATION.....	24
APPENDIX A: CHOICE SCHOLARSHIP STUDENTS BY SCHOOL CORPORATION OF LEGAL SETTLEMENT.....	25
APPENDIX B: CHOICE SCHOLARSHIP STUDENTS BY CHOICE SCHOOL.....	34
APPENDIX D: AWARD AMOUNTS BY SCHOOL CORPORATION OF LEGAL SETTLEMENT.....	58
APPENDIX E: SCHOOL CORPORATION BASED ON CHOICE SCHOOL LOCATION.....	67
APPENDIX F: AWARD TYPES BY CHOICE STUDENT SCHOOL CORPORATION OF LEGAL SETTLEMENT.....	78
APPENDIX G: AWARD TYPES BY CHOICE SCHOOL.....	88
APPENDIX H: CHOICE SCHOLARSHIP STUDENTS BY COUNTY OF RESIDENCE.....	101



INDIANA SCHOOL CHOICE SCHOLARSHIP PROGRAM HISTORY

This latest iteration of the Choice Scholarship Program Annual Report incorporates data from both the 2022-2023 and 2023-2024 school years, building upon the initial release in 2014. Since certain data will not be finalized until June 2024, some 2023-2024 information will be reflected in the 2024-2025 report. Prior Choice Scholarship Program Annual Reports can be found on the Indiana Department of Education's (IDOE's) [Indiana Choice Scholarship Program webpage](#).

Part of this report includes an overview of Indiana's current Choice Scholarship Program, which was passed as part of House Enrolled Act (HEA) 1003 (-2011) (i.e., Public Law 92 [-2011]). The Choice Scholarship Program provides Choice Scholarships to students who meet specific income criteria. These scholarships are used to offset and assist with the cost of tuition and fees at participating Choice schools for eligible families.

The legal foundation for Indiana's Choice Scholarship Program can be found in Indiana Code (IC) 20-51 and 512 Indiana Administrative Code (IAC) 4, or via IDOE's [Indiana Choice Scholarship Program webpage](#).

ELIGIBILITY

As stated above, students must satisfy income eligibility requirements to participate in Indiana's Choice Scholarship Program.

STUDENT ELIGIBILITY CRITERIA

For the 2023-2024 school year, legislative changes repealed the previous eligibility track requirement for Choice students. All students must now satisfy the following two requirements:

1. Have legal settlement in Indiana; and
2. Be at least five years of age and less than 22 years of age on October 1 of the school year.

After meeting the above criteria, students must satisfy the requirement of income eligibility criteria. Legislative changes have increased the income eligibility criteria from 300% to 400% of the household income to qualify for the Federal Free or Reduced Lunch Program and the age deadline changed from August 1st to October 1st beginning with the 2023-2024 school year.

INCOME ELIGIBILITY CRITERIA

The income criteria to participate in the Choice Scholarship Program for the 2023-2024 school year, shown in Table 1 below, are linked to the Federal Free or Reduced Price Lunch Program income guidelines.

The 90% award amounts are percentages of the tuition support amounts that the respective student's public school corporation of legal settlement would receive if the student enrolled in a public school in that corporation.



Table 1. Choice Scholarship Program Income Limits by Household Size 2023-2024 School Year	
400% of Reduced Lunch Eligibility	
Household Size	Annual Household Income Limit ¹
1	\$107,892.00
2	\$145,928.00
3	\$183,964.00
4	\$222,000.00
5	\$260,036.00
6	\$298,072.00
7	\$336,108.00
8	\$374,144.00
9	\$412,180.00
10	\$450,216.00

Note: Income levels are determined in accordance with the Income Verification Rules document available at <https://www.in.gov/doe/students/indiana-choice-scholarship-program/>.

¹ For a household size of eleven (11) or more, add \$38,036 to the annual limit for each additional member

PARTICIPATION

STUDENT AND SCHOOL PARTICIPATION

Beginning with the 2019-2020 school year, a second Choice student application period was put in place. The original application, period one, is open annually from March 1 to September 1. The second application, period two, is open from November 1 to January 15. For purposes of the Choice Scholarship Program Annual Report, a school is only counted as participating if they have one or more students receive payment, and students are only counted as participating if they receive a payment during the 2023-2024 school year.

The 2023-2024 school year saw the largest growth in the number of students in the history of the program. Last year, the 2022-2023 Choice Scholarship Program had 52,614 participating students in period one, 648 participating students in period two, and 343 participating schools. The 2023-2024 school year saw an increase in participating schools to 357, the most participating schools of any year of the Choice Scholarship Program. There were 68,766 participating students in period one and 1,329 participating students in period two, which increased the total number of participating students for the 2023-2024 school year to 70,095.

The period two application was established, by law, to provide an opportunity for eligible students to transfer to a new Choice school and receive a Choice Scholarship after the September 1 deadline. However, 1,329 students did not participate during period one and were new to participating in the 2023-2024 Choice Scholarship Program. Additionally, 109 participating students from period one participated in period two. Because these students were



counted in the student count for period one, they were excluded from the period two count of 1,329, to avoid a duplicated count. The change in student participation is indicated below.

Table 2. Student Participation				
Year	Application Period	Student Count	Change from Previous Year	Percent Change from Previous Year
2022-2023	Period One	52,614	9,055	20.79%
	Period Two	648	-169	-20.69%
	Total	53,262	8,886	20.02%
2023-2024	Period One	68,766	16,152	30.70%
	Period Two	1,329	681	105.09%
	Total	70,095	16,833	31.60%

Table 3 illustrates the participating student applicant types for the 2023-2024 period two participating students. The table details whether a student participated in 2023-2024 period one, transferred schools, and participated for 2023-2024 period two; or if the student did not participate during 2023-2024 period one and participated for 2023-2024 period two and received only a period two Choice Scholarship award for the 2023-2024 school year.

Table 3. Period Two Participating Student Applicant Types			
Year	New Applicants	Transfer Applicants	Total
2022-2023	648	78	726
2023-2024	1,329	109	1,438

Table 4, below, illustrates students that transferred during the 2023-2024 school year and participated in both application periods. The table shows students that participated during the first period application, left their original Choice school, and whether they returned to the same Choice school to apply and participate for the second period or enrolled, applied, and participated at a different Choice school for the second period. With 99 students changing schools from period one to period two, this means only 6.88% of period two participants and 0.14% of students are utilizing the period two application as it was intended.

Table 4. Period Two Participating Student Transfer Types			
Year	Same School	Different School	Total
2022-2023	11	67	78
2023-2024	10	99	109

The change in school participation from the 2022-2023 school year to the 2023-2024 school year is illustrated in Table 5.

Table 5. School Participation			
Year	School Count	Change from Previous Year	Percent Change from Previous Year
2022-2023	343	13	3.94%
2023-2024	357	14	4.08%



Non-public schools, consisting of Choice and non-Choice schools, accounted for 8.23% of statewide student enrollment for the 2022-2023 school year. This is an increase of 0.40% from the 2022-2023 school year. Choice student enrollment increased by 1.43% over the same time period, which is only reflected by the period one count of 68,766. Overall state enrollment increased except for in traditional public schools, which decreased in the number of students as well as percentage of the state total enrollment. Non-public schools (excluding Choice students) decreased in percentage only. All other school types saw an increase in enrollment count and percentage.

Table 6a. Count of Statewide Student Enrollment by School Type

Year	Traditional Public	Public Charter	Non-Public (Excluding Choice Students) *	Choice	Other	Total
2022-2023	983,281	51,122	35,344	52,614	1,735	1,124,096
2023-2024	978,458	52,403	23,846	68,766	1,902	1,125,375

* Includes only accredited non-public schools that report to the Indiana Department of Education.

Table 6b. Percent of Statewide Student Enrollment by School Type

Year	Traditional Public	Public Charter	Non-Public (Excluding Choice Students) *	Choice	Other	Total
2022-2023	87.47%	4.55%	3.15%	4.68%	0.15%	100.00%
2023-2024	86.94%	4.66%	2.12%	6.11%	0.17%	100.00%

* Includes only accredited non-public schools that report to the Indiana Department of Education.

PARTICIPATION BY GRADE LEVEL

The count of program participants by grade level, as well as the percent each grade level accounted for in terms of program participation each year, are detailed in Table 7. From the 2022-2023 school year to the 2023-2024 school year, aside from kindergarten, no grade level increased or decreased by more than 0.69% as a percentage of participating students in the Choice Scholarship Program. The largest decrease, 0.69%, was found in the fifth grade. The largest increase, aside from kindergarten, 0.18%, was found in the tenth grade. Kindergarten saw an increase of 4.22%. This increase in kindergarten is directly tied to the repealing of the eligibility tracks for Choice eligibility. The prior eligibility tracks were difficult for kindergarten students to satisfy due to lack of prior education history.

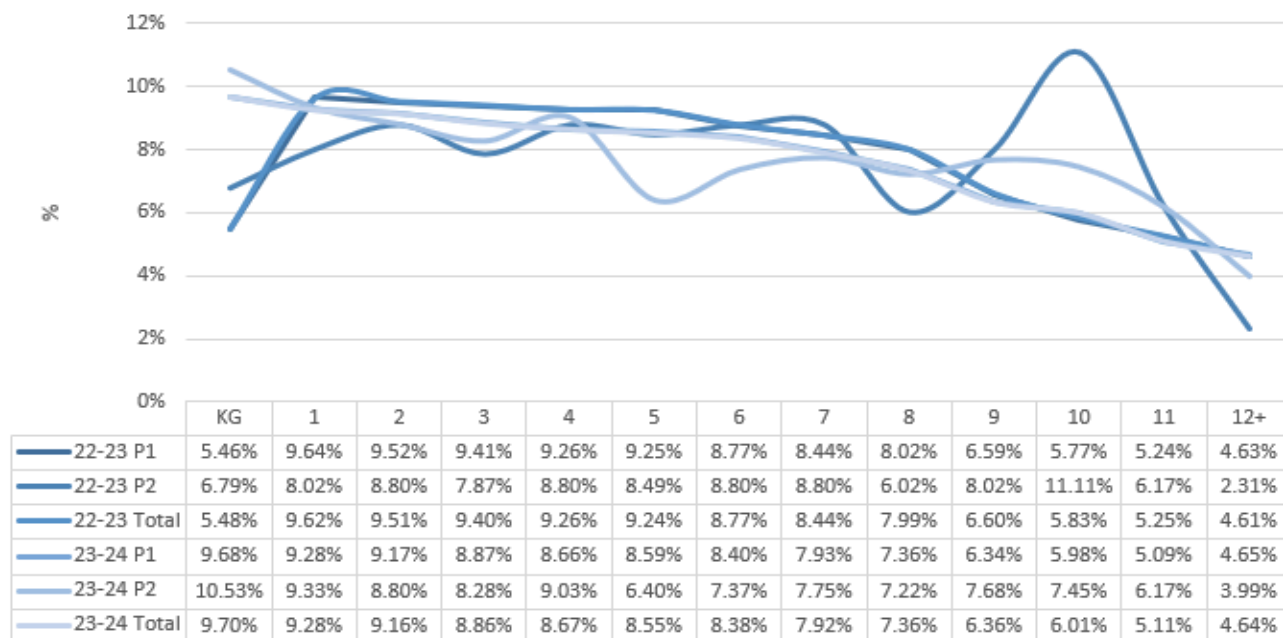
The graph on the following page shows the changes from the 2022-2023 school year to the 2023-2024 school year. Due to the increase in kindergarten participation, the data displayed in the graph is drastically different from 2022-2023 to 2023-2024. However, period one and total for both 2022-2023 and 2023-2024 are so similar that it is difficult to see separate lines in the graph.



Table 7. Participation by Grade Level

Grade	2022-2023			2023-2024		
	Period One	Period Two	Total	Period One	Period Two	Total
KG	2,872	44	2,916	6,657	140	6,797
1	5,074	52	5,126	6,380	124	6,504
2	5,010	57	5,067	6,306	117	6,423
3	4,953	51	5,004	6,099	110	6,209
4	4,874	57	4,931	5,956	120	6,076
5	4,867	55	4,922	5,906	85	5,991
6	4,613	57	4,670	5,777	98	5,875
7	4,440	57	4,497	5,451	103	5,554
8	4,219	39	4,258	5,061	96	5,157
9	3,465	52	3,517	4,357	102	4,459
10	3,033	72	3,105	4,113	99	4,212
11	2,756	40	2,796	3,502	82	3,584
12+	2,438	15	2,453	3,201	53	3,254
Total	52,614	648	53,262	68,766	1,329	70,095

Participation by Grade Level



PARTICIPATION BY GENDER

Tables 8a and 8b provide data on the gender of participating Choice Scholarship students. In each year of the program, slightly more female students have participated than male students. The 2023-2024 school year has shown a slight increase in the percentage of female students and a slight decrease in male students. The changes



in each year are marginal and female students still make up just over 50% of the participating students in the Choice Scholarship Program. Overall, the percentages for male and female participating students are nearly 50% each. From the 2022-2023 school year to the 2023-2024 school year, there was a 0.35% increase in female students and 0.35% decrease in male students in total.

Year	Application Period	Female	Male	Total
2022-2023	Period One	26,479	26,135	52,614
	Period Two	302	346	648
	Total	26,781	26,481	53,262
2023-2024	Period One	34,824	33,942	68,766
	Period Two	668	661	1329
	Total	35,492	34,603	70,095

Year	Application Period	Female	Male	Total
2022-2023	Period One	50.33%	49.67%	100.00%
	Period Two	46.60%	53.40%	100.00%
	Total	50.28%	49.72%	100.00%
2023-2024	Period One	50.64%	49.36%	100.00%
	Period Two	50.26%	49.74%	100.00%
	Total	50.63%	49.37%	100.00%

PARTICIPATION BY ETHNICITY

Table 9 details the reported ethnicity of Choice Scholarship students from the 2022-2023 and 2023-2024 school years.

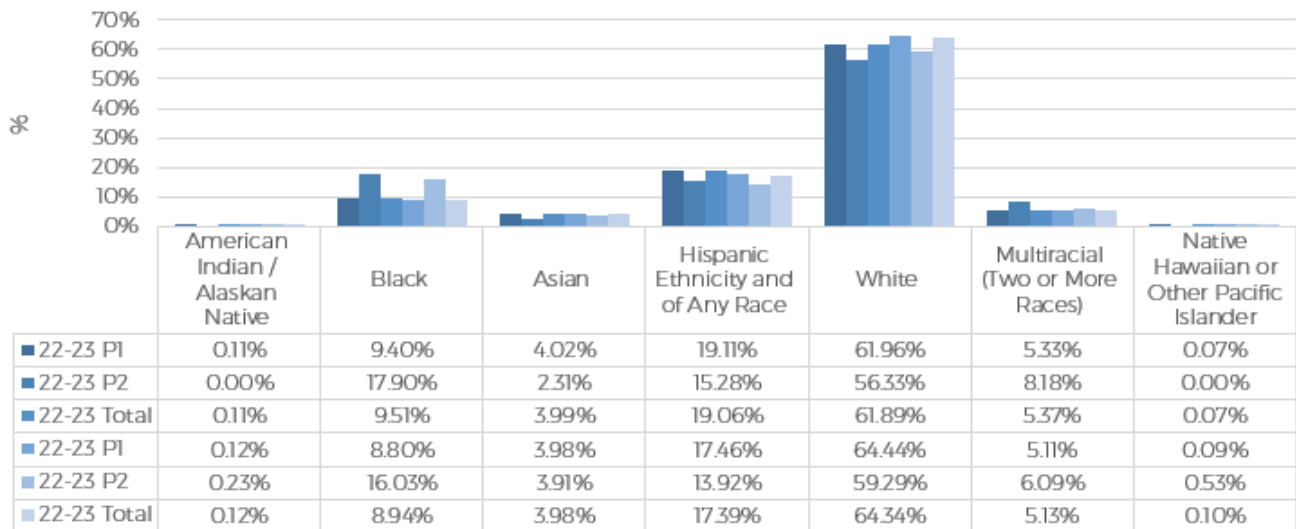


Table 9. Participation by Ethnicity

Ethnicity	2022-2023			2023-2024		
	Period One	Period Two	Total	Period One	Period Two	Total
American Indian / Alaskan Native	58	0	58	85	3	88
Black	4,948	116	5,064	6,054	213	6,267
Asian	2,113	15	2,128	2,736	52	2,788
Hispanic Ethnicity and of Any Race	10,055	99	10,154	12,008	185	12,193
White	32,597	365	32,962	44,309	788	45,097
Multiracial (Two or More Races)	2,806	53	2,859	3,513	81	3,594
Native Hawaiian or Other Pacific Islander	37	0	37	61	7	68
Total	52,614	648	53,262	68,766	1,329	70,095

The graph below depicts the percentage of participation by reported ethnicity of Choice Scholarship students. American Indian/Alaskan Native ethnicity, White ethnicity, and Native Hawaiian or Other Pacific Islander ethnicity were the only ethnicities that saw an increase from 2022-2023 to 2023-2024 with an increase of 0.01%, 2.45% and 0.03%, respectively. Hispanic ethnicity and of any race that makes up the second largest group of students saw the largest decrease from 2022-2023 to 2023-2024 at 1.67%. All other ethnicities decreased by less than 0.57% each. The graph illustrates how closely the percentages for period one and the total are for both 2022-2023 and 2023-2024. Additionally, the graph illustrates how period two fluctuates from other illustrated periods.

Participation by Ethnicity





PARTICIPATION BY GEOGRAPHIC AREA

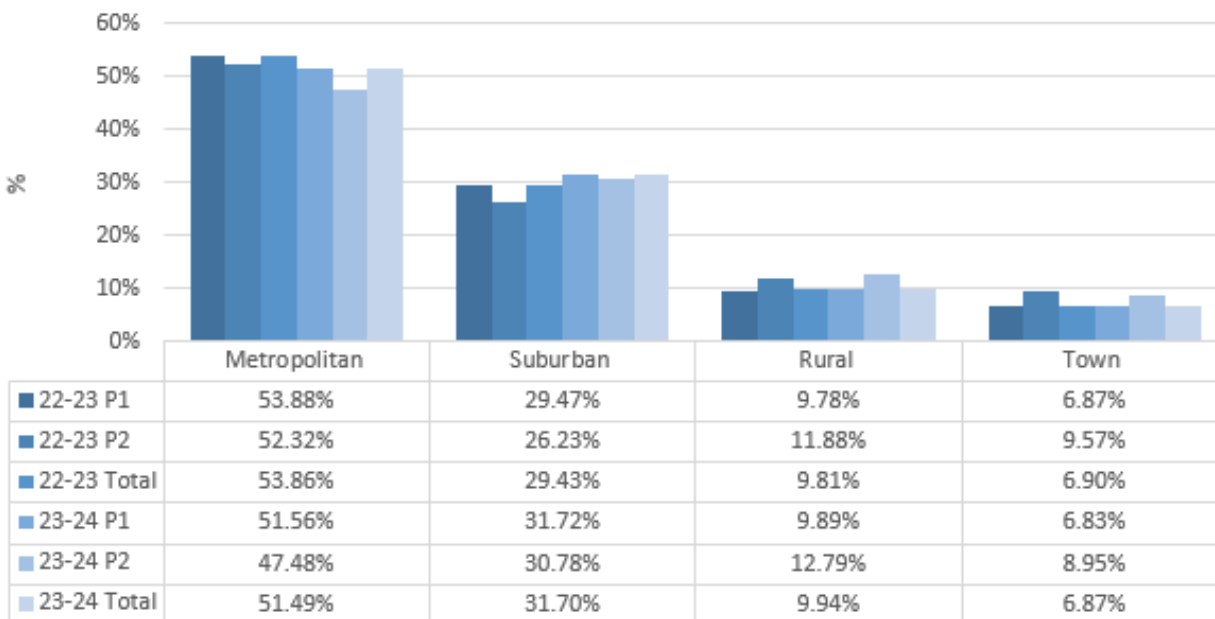
Each public school corporation in Indiana is categorized as one of four geographic types – metropolitan, suburban, rural, or town. The geographic area for each student is determined by the public school corporation where the student lives. As illustrated in Table 10, most students live in a metropolitan area; however, this area saw the largest decrease from the 2022-2023 school year to the 2023-2024 school year at 2.37%. Meanwhile, suburban and rural areas experienced an increase from the 2022-2023 school year to the 2023-2024 school year of 2.27% and 0.14% respectively.

Table 10. Participation by Geographic Area

Year	Application Period	Metropolitan	Suburban	Rural	Town	Total
2022-2023	Period One	28,349	15,507	5,147	3,611	52,614
	Period Two	339	170	77	62	648
	Total	28,688	15,677	5,224	3,673	53,262
2023-2024	Period One	35,457	21,812	6,800	4,697	68,766
	Period Two	631	409	170	119	1,329
	Total	36,088	22,221	6,970	4,816	70,095

As illustrated in the graph below, the percentages for most geographic types are similar for period one and total. However, period two data, like many other tables have shown, do not follow the same trend or percentages.

Participation by Geographic Type





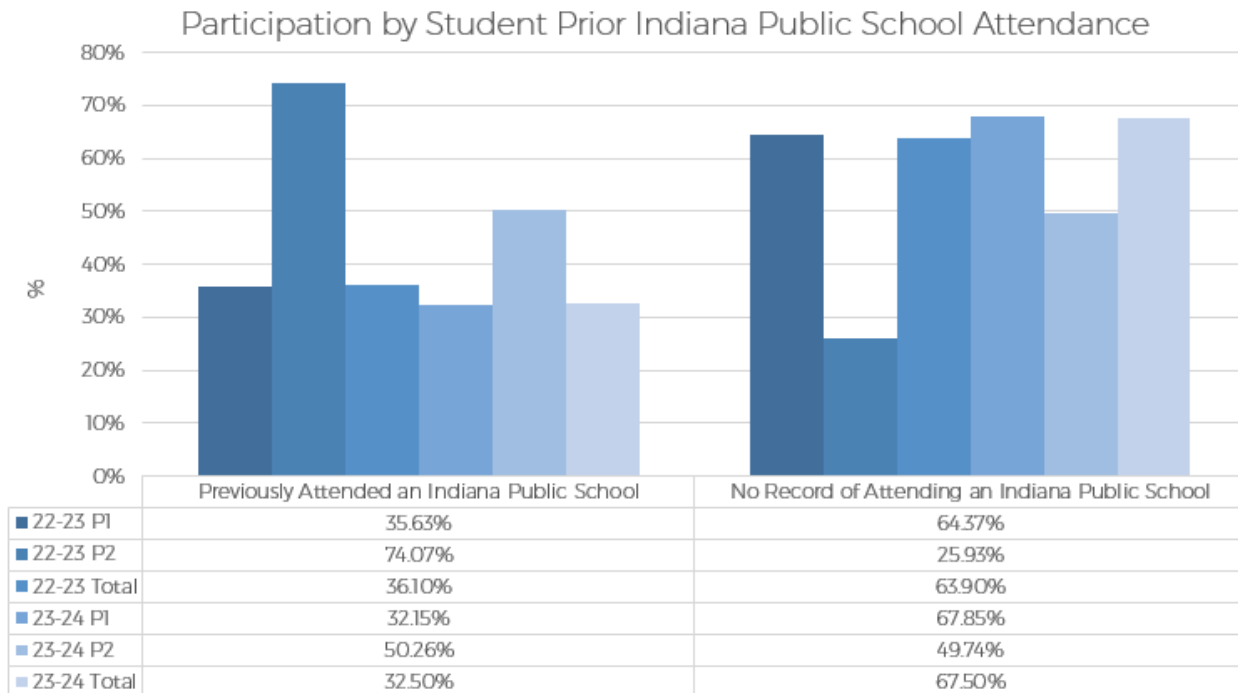
PARTICIPATION BY PRIOR INDIANA PUBLIC SCHOOL ATTENDANCE

Table 11 below and the graph found on the next page provide the count and percentage of Choice Scholarship students who previously attended an Indiana public school at any point in their educational history.

Year	Application Period	Previously Attended an Indiana Public School	No Record of Attending an Indiana Public School	Total
2022-2023	Period One	18,745	33,869	52,614
	Period Two	480	168	648
	Total	19,225	34,037	53,262
2023-2024	Period One	22,111	46,655	68,766
	Period Two	668	661	1,329
	Total	22,779	47,316	70,095

For the 2023-2024 school year, roughly 33% of students participating in the Choice Scholarship Program have a record of previously attending an Indiana public school. The percentage of students with a record of previously attending an Indiana public school was at roughly 36% for the 2022-2023 school year. This decrease is likely due to the removal of eligibility tracks, the increase of income to 400%, and students who were already enrolled at their Choice school now qualifying without prior attendance at an Indiana public school.

Percentages for period one and the total in 2022-2023 and 2023-2024 are comparable, while the percentages for period two for both years show the opposite of period one. The data shows a trend of less participating students ever attending an Indiana public school, and period two closer mirroring the percentages of period one and the total.





SPECIAL EDUCATION

During the 2013 legislative session of the Indiana General Assembly, legislation was passed allowing non-public schools to be the designated special education service provider for eligible Choice Scholarship students. Choice schools that are selected as an eligible student’s special education service provider and agree to provide associated services may receive state special education funding to meet these student’s needs. Prior to this legislation, non-public schools were not eligible to receive state special education funding for any eligible special education student.

At the time of application, the parent/guardian of a Choice student who qualifies to receive special education services must designate the Choice school or the public school corporation as the special education service provider. If the Choice school is selected, they are eligible to receive state special education funding for the student.

Table 12 and the following graph detail the special education service provider selection of eligible Choice Scholarship students by their respective parent/guardian. For the 2023-2024 school year, 5,219 participating Choice Scholarship students were eligible for special education as reported on their application. Of these students, 923, or 17.69%, selected their Choice school as the special education service provider while the other 4,296, or 82.31%, selected the public school corporation where the Choice school is located if the Choice school is a physical location. For virtual Choice schools, the public school corporation providing services would be the corporation where the student lives.

Compared to the 2022-2023 school year, 0.46% less applicable students chose the Choice school as the special education service provider in 2023-2024. Period one and total percentages for 2022-2023 and 2023-2024 were all between about 17% and 18% for Choice schools and between 82% and 83% for the public school corporation. Period two showed much different percentages, coming in around 22% and 17%, for 2022-2023 and 2023-2024, respectively, of students selecting the Choice school as the special education service provider, while 78% and 83%, for 2022-2023 and 2023-2024, respectively, selected the public school corporation. Percentages for period two in 2023-2024 shifted to closely match those of period one and total.

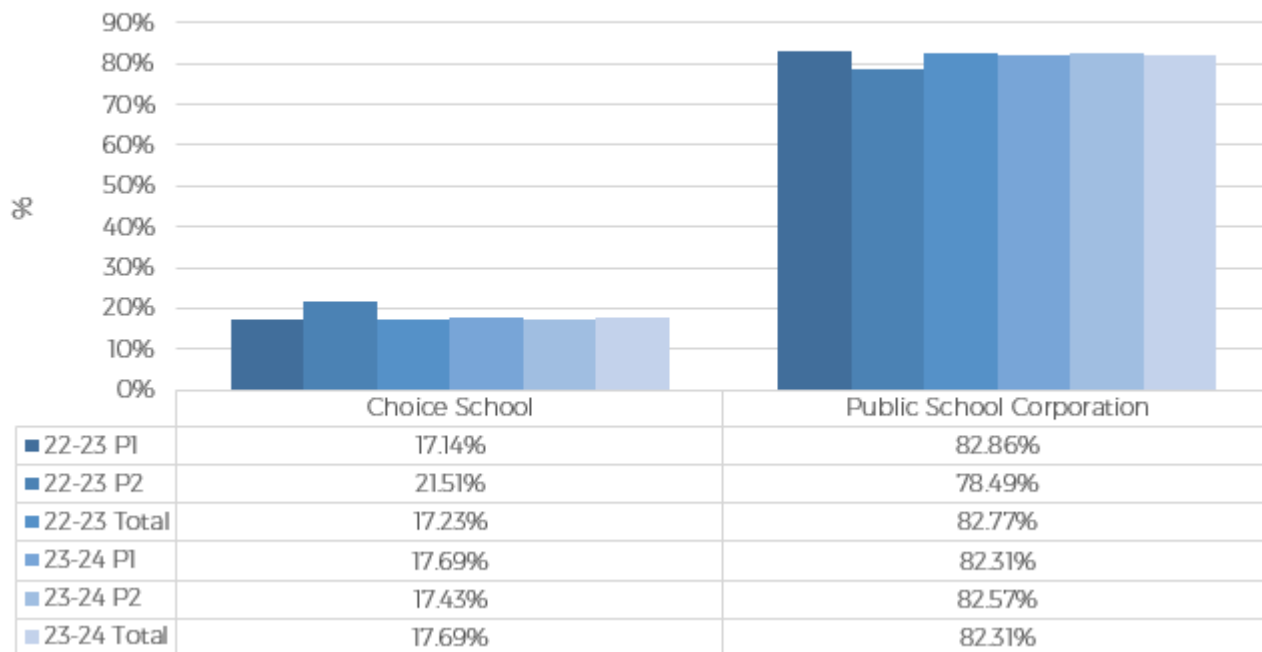
Table 12. Special Education Service Provider Selection Count

Year	Application Period	Choice School	Public School Corporation*	Total
2022-2023	Period One	738	3,568	4,306
	Period Two	20	73	93
	Total	758	3,641	4,399
2023-2024	Period One	904	4,206	5,110
	Period Two	19	90	109
	Total	923	4,296	5,219

* The public school corporation where the Choice school is located, not the student's school corporation of legal settlement



Special Education Service Provider Selection Percentage



For the 2023-2024 school year, 85 Choice schools were selected as the special education service provider for at least one eligible Choice Scholarship student, but only 68 of the schools received a payment for at least one student. The information shown in Table 13 shows the special education payment information for Choice schools for 2022-2023. In 2022-2023, Choice schools received a combined special education payment for eligible Choice students of \$2,275,841.15. In cases where a parent/guardian who designated the Choice school as the service provider exited the Choice school prior to the end of the school year, a prorated refund of the special education funding was returned to IDOE.

Table 13. Special Education Payment and Refunds	
2022-2023	
Payment	\$2,275,841.15
Refunds	(\$9,993.93)
Net Payment	\$2,265,847.22
Note: The 2023-2024 information is not available at this time due to outstanding refunds. 2023-2024 information will be included in the 2024-2025 Choice Annual Report.	

RETENTION

PARTICIPANT RETENTION DURING THE SCHOOL YEAR

Participating Choice schools are required to report a Choice Scholarship student who withdraws from the Choice school to IDOE within five days of the student's exit date. Table 14 provides the count and percentage of participating students who exited a Choice school prior to the last day of school.



Table 14. Students Who Exited Choice School Before Last Day

Year	Application Period	Total Count	Count Who Exited	Percent
2021-2022	Period One	43,559	1709	3.92%
	Period Two	817	41	5.02%
	Total	44,376	1750	3.94%
2022-2023	Period One	52,614	4,475	8.51%
	Period Two	648	75	11.57%
	Total	53,262	4,550	8.54%

Note: The 2023-2024 information is not available at this time. It will be included in next year's updated report.

PARTICIPANT RETENTION BETWEEN SCHOOL YEARS

Table 15 on the next page illustrates participating student retention in the Choice Scholarship Program between school years. Of the 70,095 Choice Scholarship students who participated in the 2023-2024 Choice Scholarship Program, 45,059 of those students participated in the 2022-2023 school year. The 64.28% retention rate from 2022-2023 to 2023-2024 shows a roughly four percent decrease from 2021-2022 to 2022-2023.

Table 15. Choice Student Retention from the Previous Year

Year	Total Students	Participated in the Previous Year	Did Not Participate in the Previous Year	Percent Retained from Previous Year
2022-2023	53,262	36,354	16,908	68.26%
2023-2024	70,095	45,059	25,036	64.28%

AWARDS

CALCULATION OF AWARD AMOUNT

Currently, the value of the Choice Scholarship is the lesser of two amounts:

- 1) Tuition and fees charged to the student at the eligible Choice school; or
- 2) An amount based off the per-student State funding for the student's public school corporation of residence, determined as follows:
 - 90% of the funding formula amount if household income is up to 400% of Federal Free or Reduced Price Lunch eligibility.

The 90% amount calculation, which uses the per-student State funding amount by public school corporation of residence for the 2023-2024 school year, were posted on IDOE's [Indiana Choice Scholarship Program webpage](#). Currently, the 2024-2025 estimated award amounts are found on the Choice website.

Beginning in the 2015-2016 school year, the maximum award amount of \$4,800 for grades one through eight was removed. Thus, the maximum award amount is the lesser of the tuition and fees charged to the student at the eligible Choice school or the 90% Choice Scholarship award amounts based on the funding formula.

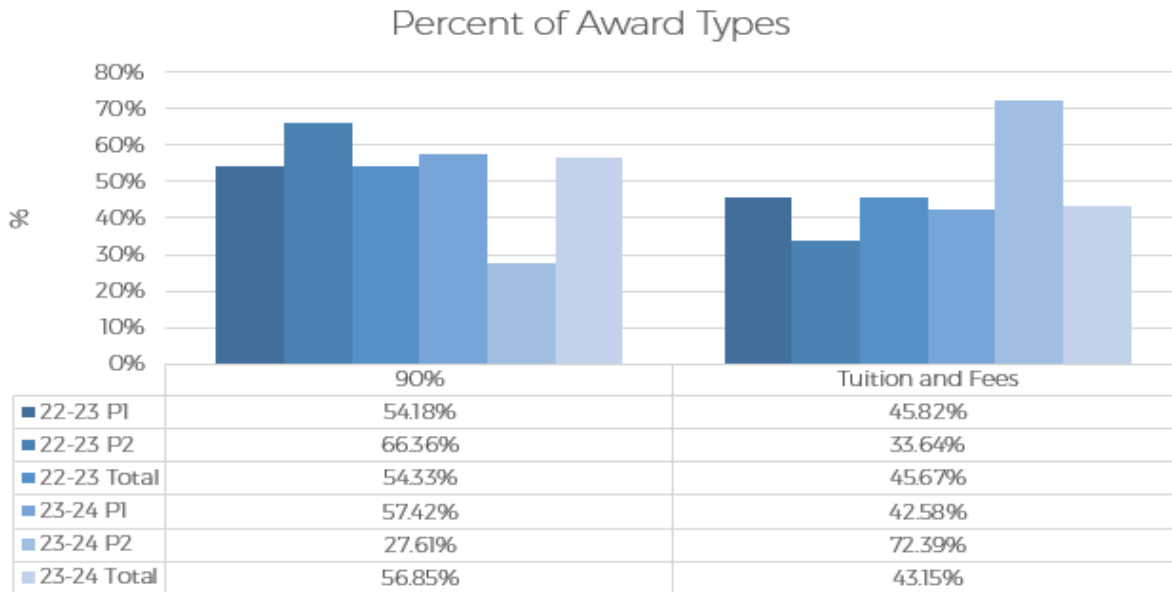


AWARDS BY TYPE

The 2021-2022 school year was the first year of the Choice Scholarship Program to have only a 90% award type due to 70% and 50% award amounts being repealed. As stated previously in this report, the award amount for a student is the lesser of their respective Choice school's tuition and fees amount entered on the applying student's application or the 90% tuition support amount for the public school corporation of legal settlement entered on the applying student's application. Table 16 below shows the number of students that had tuition and fees as the lesser amount and the number of students that had the 90% amount as the lesser amount.

Year	Application Period	90% Award	Tuition and Fees	Total
2022-2023	Period One	28,505	24,109	52,614
	Period Two	430	218	648
	Total	28,935	24,327	53,262
2023-2024	Period One	39,485	29,281	68,766
	Period Two	367	962	1,329
	Total	39,852	30,243	70,095

The graph below shows that the 90% award type increased 2.52% and the tuition and fees award type decreased by 2.52% from the 2022-2023 school year to the 2023-2024 school year. The graph also shows that the distribution of award types is not much different with 90% at 56.85% for 2023-2024 and tuition and fees at 43.15% for 2023-2024. This increase in 90% award amounts would indicate that more Choice Scholarship eligible families are now required to pay some of their tuition and fees since the Choice Scholarship award is less than the tuition and fees amount at their Choice school.



In addition to household income and household size, the Choice Scholarship Program utilizes the Choice Scholarship Eligibility System (CSES) and legal foster child status as verification that Choice students satisfy the income eligibility aspect of the application process. These two means of income verification are not required by law



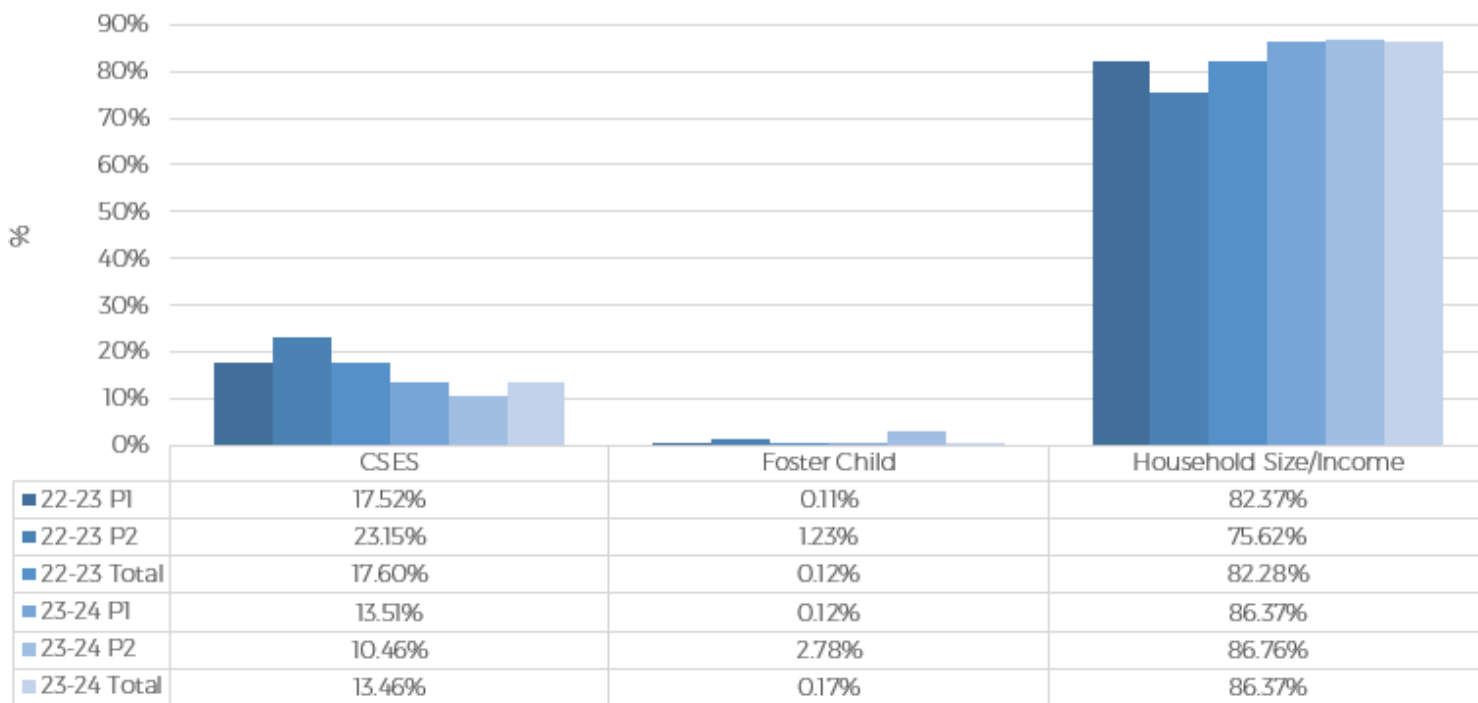
but have been implemented by IDOE to assist schools and families. The CSES is a database compiled of students who qualify for certain benefits from other State administered financial assistance programs. In addition, if a child has legal status as a foster child, the income eligibility criteria for the Choice Scholarship Program is satisfied. Table 17 below outlines the breakdown of students by the avenue in which they satisfied the income criteria.

Table 17. Count of Income Eligibility Types

Year	Application Period	CSES	Foster Child	Household Size/Income	Total
2022-2023	Period One	9,221	57	43,336	52,614
	Period Two	150	8	490	648
	Total	9,371	65	43,826	53,262
2023-2024	Period One	9,292	83	59,391	68,766
	Period Two	139	37	1,153	1,329
	Total	9,431	120	60,544	70,095

The graph below illustrates that the majority of students utilize household size and income to satisfy income eligibility with 86.37% of students.

Percent of Income Eligibility Types



Tables 18 and 19 outline the reported household sizes and incomes for the 86.37% of students who applied using household income and size for their income eligibility. Of those students, 90.74% live in a household with six or less people, and 80.72% of these students live in a household with an annual household income of \$150,000 or less. The average household size and income for 2023-2024 total are 4.66 and \$99,121.08, respectively. This shows marginal change in the average household size from 2022-2023 to 2023-2024 and an increase in household income



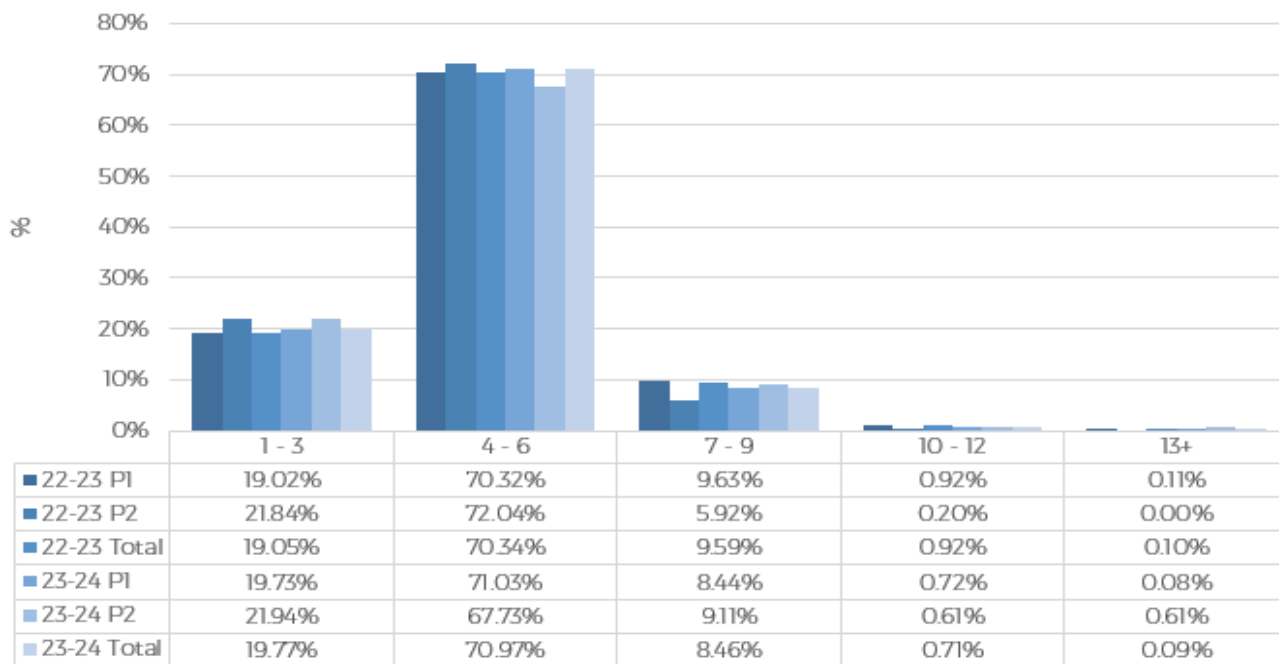
of \$17,303.56. The increase in income is likely due to the increase of the income guidelines to 400% of the Free and Reduced Price Lunch Program. However, though the limit is 400%, a household size of 4.66 with an income of \$99,121.08 is 178.60% of the Free or Reduced Price Lunch Program for a household size of 4 and 152.47% for a household size of 5.

Table 18. Count by Household Size Types

Year	Application Period	1 - 3	4 - 6	7 - 9	10 - 12	13+	Total
2022-2023	Period One	8,241	30,473	4,175	401	46	43,336
	Period Two	107	353	29	1	0	490
	Total	8,348	30,826	4,204	402	46	43,826
2023-2024	Period One	11,717	42,186	5,015	426	47	59,391
	Period Two	253	781	105	7	7	1,153
	Total	11,970	42,967	5,120	433	54	60,544

As shown in the graph below, the only household size types to increase from 2022-2023 to 2023-2024 were 1-3 and 4-6 at 0.72% and 0.63%, respectively. The largest decrease from 2022-2023 to 2023-2024 came in household size type of 7-9 with roughly 1.13%.

Percent by Household Size Type



As shown in Table 19 and the graph on the next page, only household income types \$150,001-\$200,000 and \$200,001+ increased for 2023-2024. The largest increase from 2022-2023 to 2023-2024 came in household income of \$150,001-\$200,000 at roughly 6.73%. The largest decrease from 2022-2023 to 2023-2024 came in household income of \$50,001-\$100,000 at roughly 7.05%. These changes in income type percentages are also likely due to the changes in the income guidelines to 400% for the Federal Free or Reduced Price Lunch Program.



Table 19. Count of Household Income Types

Year	Application Period	\$0-\$50,000	\$50,001-\$100,000	\$100,001-\$150,000	\$150,001-\$200,000	\$200,001+	Total
2022-2023	Period One	12,129	16,639	11,424	2,794	350	43,336
	Period Two	188	162	108	28	4	490
	Total	12,317	16,801	11,532	2,822	354	43,826
2023-2024	Period One	13,816	18,672	15,484	7,836	3,583	59,391
	Period Two	436	276	189	136	116	1,153
	Total	14,252	18,948	15,673	7,972	3,699	60,544

Percent by Household Income Types



AWARD AMOUNT BY GRADE LEVEL

Table 20 details the total award amount of Choice Scholarship students by grade level. In correlation with Table 7, roughly the same distribution of total award amounts by grade can be seen in total participation by grade. The amounts shown are the maximum that would be paid if every student remained enrolled for the full school year and did not receive a prorated award amount or have a refund owed; it is not the amount that has been paid. Table 20 illustrates the elementary school grade levels as having the most in count and amount. Period two award amounts are calculated to half the award amount of period one award amounts due to the Choice Scholarship only being used for half of the school year.



Table 20. Awards by Grade

Grade	2022-2023			2023-2024		
	Period One	Period Two	Total	Period One	Period Two	Total
KG	\$16,233,615.37	\$117,288.88	\$16,350,904.25	\$41,013,592.47	\$417,570.51	\$41,431,162.98
1	\$29,399,382.34	\$149,907.13	\$29,549,289.47	\$39,835,908.68	\$371,642.03	\$40,207,550.71
2	\$28,753,358.84	\$172,578.37	\$28,925,937.21	\$39,320,528.35	\$352,120.01	\$39,672,648.36
3	\$28,473,894.91	\$153,283.90	\$28,627,178.81	\$37,781,465.05	\$318,128.48	\$38,099,593.53
4	\$28,092,010.52	\$175,120.95	\$28,267,131.47	\$36,972,486.59	\$365,818.35	\$37,338,304.94
5	\$28,070,850.46	\$164,863.82	\$28,235,714.28	\$36,732,569.34	\$250,856.25	\$36,983,425.59
6	\$26,630,241.79	\$170,459.44	\$26,800,701.23	\$36,163,420.37	\$293,830.52	\$36,457,250.89
7	\$25,905,098.73	\$173,823.21	\$26,078,921.94	\$34,223,866.65	\$315,697.87	\$34,539,564.52
8	\$24,575,287.78	\$119,351.11	\$24,694,638.89	\$31,885,748.10	\$286,866.63	\$32,172,614.73
9	\$21,882,271.49	\$167,590.25	\$22,049,861.74	\$29,097,378.39	\$328,783.94	\$29,426,162.33
10	\$19,118,114.38	\$229,071.90	\$19,347,186.28	\$27,440,065.10	\$318,675.13	\$27,758,740.23
11	\$17,351,261.14	\$129,801.90	\$17,481,063.04	\$23,261,058.80	\$264,455.36	\$23,525,514.16
12+	\$15,357,311.36	\$48,191.73	\$15,405,503.09	\$21,262,576.62	\$176,344.25	\$21,438,920.87
Total	\$309,842,699.11	\$1,971,332.59	\$311,814,031.70	\$434,990,664.51	\$4,060,789.33	\$439,051,453.84

AWARDS BY PUBLIC SCHOOL CORPORATION OF LEGAL SETTLEMENT

Table 21 provides the count of public school corporations where Choice students had legal settlement in the 2022-2023 and 2023-2024 school years. The Choice student count by public school corporation of legal settlement is provided in Appendix A. Please note that students may not have attended a public school in their public school corporation of legal settlement prior to participating in the Choice Scholarship Program. For 2023-2024 period two, no additional public school corporations were included that were not part of 2023-2024 period one. Overall, the 2023-2024 total saw an increase of three public school corporations from 2022-2023, or 0.01%.

Table 21. Corporation of Legal Settlement of Choice Students

Year	Application Period	Public School Corporation of Legal Settlement	Change from Previous Year	Percent Change from Previous Year
2022-2023	Period One	273	9	3.41%
	Period Two	0	-2	-1
	Total	273	7	2.63%
2023-2024	Period One	276	3	0.01%
	Period Two	0	0	0.00%
	Total	276	0	0.01%

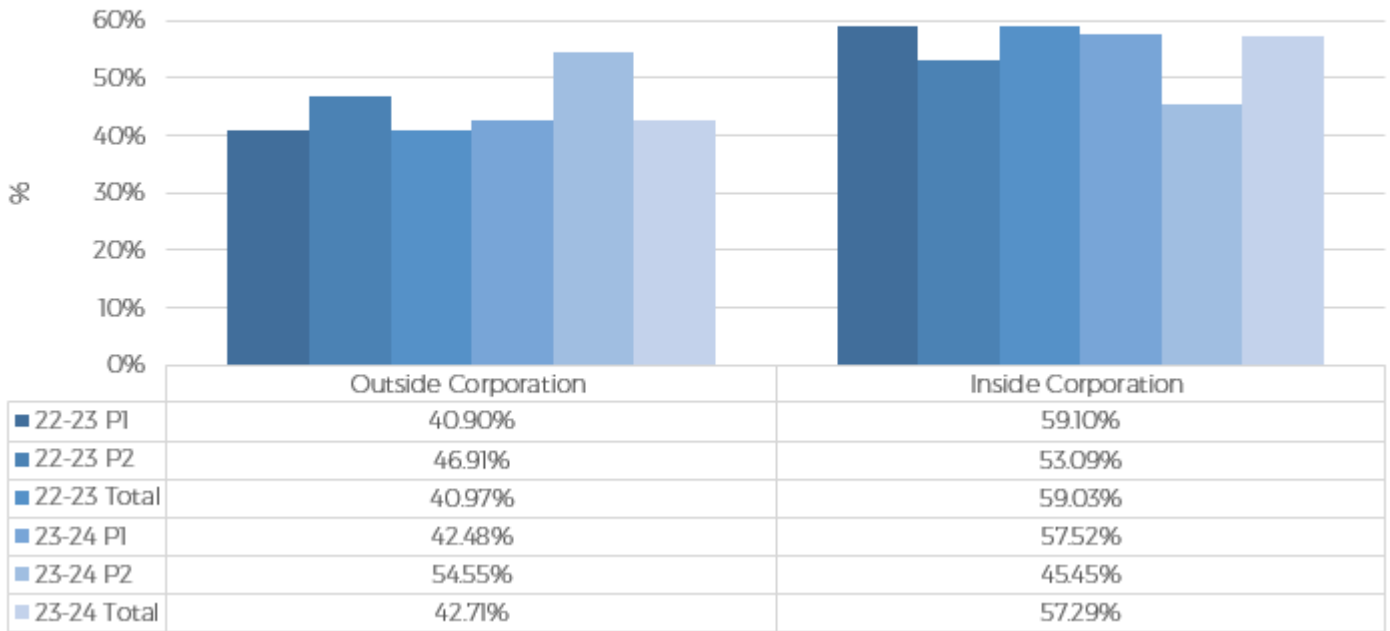
Choice Scholarship students may apply for, and use, the award at any participating Choice school. Table 22 and the graph below show the count and percentage of Choice Scholarship students who used their award to attend a Choice school located inside or outside the boundaries of the student's public school corporation of legal settlement. For the 2023-2024 school year, 57.29% of students attend a Choice school within the boundaries of their respective public school corporation of legal settlement. This is a 1.74% decrease from 2022-2023. There is no evident reason



why this data would change from the previous year. A list of Choice Scholarship student counts by participating Choice school is available in Appendix B.

Year	Application Period	Outside Corporation	Inside Corporation	Total
2022-2023	Period One	21,517	31,097	52,614
	Period Two	304	344	648
	Total	21,821	31,441	53,262
2023-2024	Period One	29,210	39,556	68,766
	Period Two	725	604	1,329
	Total	29,935	40,160	70,095

Choice Awards Used Inside or Outside of Corporation of Legal Settlement



AWARDS BY PARTICIPATING CHOICE SCHOOL

Table 23 provides the total award amount that all Choice Scholarship students were eligible to receive in each of the past two years of the Choice Scholarship Program. This is not the amount that is paid, but the total of all award amounts. The amount paid for 2022-2023 can be found in Table 26 which is different than the amount in Table 23. A complete listing of the total eligible award amount by Choice school is provided in Appendix C. The amounts shown are the maximum that would be paid if every student remained enrolled for the full school year and did not receive a prorated award amount or have a refund owed. Additionally, period two award amounts are calculated to half the award amount of period one award amounts due to the Choice Scholarship only being used for half of the school year.



Table 23. Yearly Choice Summary

Year	Choice Schools	Choice Students	Choice Students as % of Statewide Enrollment	Total Qualified Award Amount
2022-2023	343	53,262	4.68%	\$311,814,031.70
2023-2024	357	70,095	6.11%	\$439,051,453.84

Table 24 depicts the different amounts of tuition and fees charged to participating students. Roughly 79% of participating Choice students have a tuition and fee amount of \$5,001 to \$10,000. This is about a 3% increase from 2022-2023 to 2023-2024. All tuition and fee types besides \$0-\$5,000 saw a percentage increase from 2022-2023 to 2023-2024 with \$0-\$5,000 seeing a decrease of about 6.05%. This would indicate that Choice schools have increased their tuition and fees for 2023-2024.

Table 24. Count of Tuition and Fee Types

Year	Application Period	\$0-\$5,000	\$5,001-\$10,000	\$10,001-\$15,000	\$15,001-\$20,000	\$20,001+	Total
2022-2023	Period One	7,015	39,954	4,422	1,188	35	52,614
	Period Two	46	519	56	23	4	648
	Total	7,061	40,473	4,478	1,211	39	53,262
2023-2024	Period One	4,896	54,512	7,003	1,685	670	68,766
	Period Two	154	1,039	99	32	5	1,329
	Total	5,050	55,551	7,102	1,717	675	70,095

Table 25 depicts the different payment scenarios for the 70,095 students who participated in the 2023-2024 Choice Scholarship Program. As also stated in Table 23, if all Choice students remained at their Choice school for the full year, the total amount that would be paid in Choice awards would be \$439,051,453.84. Based on the reported tuition and fees for those same students at their respective Choice school, the full tuition and fees for all participating Choice students would total \$543,182,788.02 for the 2023-2024 school year. Since 30,243 students received an award amount equal to their reported tuition and fees amount, that leaves \$104,131,334.18 in tuition and fees to be paid by the families of the 39,852 students who did not receive their full tuition and fees as their award amount, averaging \$2,612.95 due to Choice schools per student. Additionally, if the same 70,095 Choice students were to attend their public school corporation of legal settlement for the 2023-2024 school year, the amount that would be paid in public tuition support would total \$516,886,820.88. Three caveats made in Table 25 are that \$439,051,453.84 would be paid due to no students withdrawing early, \$543,182,788.02 is the full tuition that Choice schools would charge students in 2023-2024 for both periods one and two, and that if all Choice students were not enrolled at a Choice school, they would enroll at their respective public school corporation even though data indicates that a majority of Choice students have never attended a public school.

Table 25. Total Choice Student Eligible Payment Amount

Payment Type	2022-2023			2023-2024		
	Period One	Period Two	Total	Period One	Period Two	Total
Choice Award*	\$309,842,699.11	\$1,971,332.59	\$311,814,031.70	\$434,990,664.51	\$4,060,789.33	\$439,051,453.84
Choice School Tuition	\$376,641,431.26	\$5,012,836.79	\$381,654,268.05	\$533,451,564.01	\$9,731,224.01	\$543,182,788.02
Public Tuition Support	\$374,285,688.25	\$2,302,794.87	\$376,588,483.12	\$511,946,662.74	\$4,940,158.14	\$516,886,820.88

*Potential award amount all participating student are eligible to receive



CHOICE SCHOLARSHIP PAYMENTS

Choice Scholarship award payments are made to the Choice school on the student’s behalf at least once each semester. The student (if 18 years of age or older) or the student’s parent or guardian signs an Endorsement Form authorizing IDOE to disburse the Choice Scholarship funds directly to the participating Choice school on behalf of the Choice student.

IC 20-51-4-6 specifies, (a) *If an eligible Choice Scholarship student enrolls in an eligible school for less than an entire school year, the Choice Scholarship provided under this chapter for that school year shall be reduced on a prorated basis to reflect the shorter school term.*

The payment and prorated refund amounts for the 2022-2023 Choice Scholarship Program are detailed in Table 26. The information for the 2023-2024 school year will not be available until the end of the 2023-2024 school year and the data will not be published until the 2024-2025 version of the Choice Scholarship Program Annual Report.

Table 26. 2022-2023 Choice Payments	
Fall Payment	\$151,214,199.10
Spring Payment	\$156,297,728.49
Total Payments	\$307,511,927.59
Refunds	\$836,835.11
Net Payment	\$306,675,092.48
Note: The 2023-2024 information is not available at this time. It will be included in next year's updated report.	

2023-2024 Choice Student Summary

The following summary of the “average” Choice student is based on data found within the Choice Scholarship Report. “Average” refers to where a majority of Choice students are found within each data set.

The “average” Choice student is a female student in an elementary grade level (kindergarten through fifth grade) of white ethnicity, from a metropolitan area, from a household with a size of 4.66 people and income of \$99,121.08. Due to higher tuition and fees, the “average” Choice student has an award equal to 90 percent of the tuition support amount per student at their public school corporation of legal settlement. The average award amount is \$6,263.66 and the average tuition and fees amount is \$7,749.24.

Additionally, the “average” Choice Scholarship student applies during the period one application, participated in the 2022-2023 Choice Scholarship Program, utilizes household size and income for income eligibility, has no record of attending an Indiana public school, and attends a Choice school within the boundaries of their corporation of legal settlement.

ADDITIONAL INFORMATION

Data contained in this report was provided by IDOE’s Office of Information Technology. Data sources used in this report include the STN Application Center, the State Aid Application Center, Choice Scholarship Student Applications, Choice School Applications, and the Federal Poverty Guidelines. Data for the Choice Scholarship



Program Annual Report is specifically for the context of this report. Any questions regarding the data used should be directed to choiceschool@doe.in.gov.

For additional information on the Choice Scholarship Program, visit IDOE's [Indiana Choice Scholarship Program webpage](#).

Prior year Appendices E and F that outlined Choice student enrollment at Choice schools by public school corporation of legal settlement can now be found on IDOE's [Data Center & Reports webpage](#) under the Public Corporation Transfer Report section.

Award amounts shown in the following appendices are not actual amounts paid. The amounts shown in the appendices are the amounts for which the students were qualified and would have received if no students were withdrawn and received prorated award amounts.

For questions concerning the Choice Scholarship Program, please email choiceschool@doe.in.gov.



APPENDICES

APPENDIX A: CHOICE SCHOLARSHIP STUDENTS BY SCHOOL CORPORATION OF LEGAL SETTLEMENT

Appendix A: Choice Scholarship Students by School Corporation of Legal Settlement

Corp. No.	Corporation Name	2022-2023		2023-2024	
		Period One	Period Two	Period One	Period Two
0015	Adams Central Community Schools	12	-	*	18
5265	Alexandria Community School Corporation	66	*	94	*
5275	Anderson Community School Corporation	738	29	794	25
5470	Argos Community Schools	*	-	10	-
2435	Attica Consolidated School Corporation	*	-	*	-
3315	Avon Community School Corporation	509	13	787	13
1315	Barr-Reeve Community Schools	*	-	*	-
0365	Bartholomew Consolidated School Corporation	741	24	1,022	38
6895	Batesville Community School Corporation	158	*	221	-
2260	Baugo Community Schools	47	-	67	-
5380	Beech Grove City Schools	164	*	190	*
0395	Benton Community School Corporation	97	-	113	*
0515	Blackford County Schools	*	-	*	-
2920	Bloomfield School District	-	-	-	-
3405	Blue River Valley Schools	*	-	*	-
0935	Borden-Henryville School Corporation	81	-	149	-
5480	Bremen Public Schools	*	-	34	*
0670	Brown County School Corporation	37	*	48	*
3305	Brownsburg Community School Corporation	446	10	702	13
3695	Brownstown Central Community School Corporation	135	-	203	*
3455	C A Beard Memorial School Corporation	*	-	*	-
6340	Cannelton City Schools	-	-	-	-
3060	Carmel Clay Schools	232	*	443	*
0750	Carroll Consolidated School Corporation	12	-	11	-
2650	Caston School Corporation	-	-	-	-
4205	Center Grove Community School Corporation	391	10	626	27
8360	Centerville-Abington Community Schools	21	-	26	-



Appendix A: Choice Scholarship Students by School Corporation of Legal Settlement

Corp. No.	Corporation Name	2022-2023		2023-2024	
		Period One	Period Two	Period One	Period Two
6055	Central Noble Community School Corporation	18	-	19	-
4145	Clark-Pleasant Community School Corporation	293	*	402	*
1000	Clarksville Community School Corporation	71	-	80	-
1125	Clay Community Schools	*	-	*	-
1150	Clinton Central School Corporation	*	-	*	*
1160	Clinton Prairie School Corporation	28	-	27	*
6750	Cloverdale Community Schools	*	*	*	-
1170	Community Schools of Frankfort	27	*	32	*
2270	Concord Community Schools	157	*	189	*
2440	Covington Community School Corporation	39	-	*	-
1900	Cowan Community School Corporation	*	-	*	-
1300	Crawford County Community School Corporation	*	*	14	-
5855	Crawfordsville Community Schools	*	-	*	*
3710	Crothersville Community Schools	26	-	29	-
4660	Crown Point Community School Corporation	399	*	581	14
5455	Culver Community Schools Corporation	22	-	27	*
1940	Daleville Community Schools	16	*	17	-
3325	Danville Community School Corporation	48	-	76	*
1655	Decatur County Community Schools	22	-	48	-
1835	DeKalb County Central United School District	224	*	261	*
1805	DeKalb County Eastern Community School District	13	-	29	-
1875	Delaware Community School Corporation	29	-	33	-
0755	Delphi Community School Corporation	22	-	27	-
6470	Duneland School Corporation	128	*	212	*
0255	East Allen County Schools	1,538	13	1,811	24
2725	East Gibson School Corporation	16	-	20	-
6060	East Noble School Corporation	169	*	251	*
6510	East Porter County School Corporation	59	*	77	-
8215	East Washington School Corporation	18	*	13	-
2815	Eastbrook Community School Corporation	32	*	43	*
2940	Eastern Greene Schools	18	-	28	-
3145	Eastern Hancock County Community School Corporation	*	-	15	-
3480	Eastern Howard School Corporation	*	*	11	*
6620	Eastern Pulaski Community School Corporation	*	-	*	*



Appendix A: Choice Scholarship Students by School Corporation of Legal Settlement

Corp. No.	Corporation Name	2022-2023		2023-2024	
		Period One	Period Two	Period One	Period Two
4215	Edinburgh Community School Corporation	13	-	20	*
2305	Elkhart Community Schools	607	*	745	*
5280	Elwood Community School Corporation	14	-	15	-
5910	Eminence Community School Corporation	*	-	12	*
7995	Evansville Vanderburgh School Corporation	2,536	30	3,398	42
2155	Fairfield Community Schools	41	-	59	*
2395	Fayette County School Corporation	107	*	126	*
0370	Flat Rock-Hawcreek School Corporation	22	-	25	-
0235	Fort Wayne Community Schools	5,080	40	5,952	88
4225	Franklin Community School Corporation	125	*	188	*
2475	Franklin County Community School Corporation	150	*	188	*
5310	Franklin Township Community School Corporation	1,008	*	1,340	22
5245	Frankton-Lapel Community Schools	34	*	52	*
7605	Fremont Community Schools	*	-	*	-
8525	Frontier School Corporation	10	-	18	-
1820	Garrett-Keyser-Butler Community	64	-	84	-
4690	Gary Community School Corporation	562	14	662	19
2315	Goshen Community Schools	349	-	402	*
1010	Greater Clark County Schools	505	*	733	13
2120	Greater Jasper Consolidated Schools	172	-	234	*
6755	Greencastle Community School Corporation	*	-	-	-
3125	Greenfield-Central Community Schools	114	-	168	*
1730	Greensburg Community Schools	16	-	35	*
4245	Greenwood Community School Corporation	163	*	224	*
4700	Griffith Public Schools	137	*	174	*
7610	Hamilton Community Schools	*	-	*	-
3025	Hamilton Heights School Corporation	43	*	59	*
3005	Hamilton Southeastern Schools	815	*	1,248	24
4580	Hanover Community School Corporation	250	-	394	*
3625	Huntington County Community School Corporation	163	*	240	*
5385	Indianapolis Public Schools	4,195	52	4,864	123
6900	Jac-Cen-Del Community School Corporation	*	-	14	-
3945	Jay School Corporation	118	*	138	12
4015	Jennings County Schools	259	*	389	*



Appendix A: Choice Scholarship Students by School Corporation of Legal Settlement

Corp. No.	Corporation Name	2022-2023		2023-2024	
		Period One	Period Two	Period One	Period Two
7150	John Glenn School Corporation	46	-	74	*
3785	Kankakee Valley School Corporation	252	*	335	*
7525	Knox Community School Corporation	27	*	37	-
3500	Kokomo-Center Township Consolidated School Corporation	195	*	237	*
7855	Lafayette School Corporation	540	*	651	*
4615	Lake Central School Corporation	508	11	872	*
4650	Lake Ridge Schools	117	-	138	-
4680	Lake Station Community Schools	96	-	104	*
4535	Lakeland School Corporation	*	-	10	-
3160	Lanesville Community School Corporation	26	-	40	*
4945	LaPorte Community School Corporation	138	*	181	*
1620	Lawrenceburg Community School Corporation	43	*	66	*
0665	Lebanon Community School Corporation	86	*	122	*
1895	Liberty-Perry Community School Corporation	*	-	*	-
2950	Linton-Stockton School Corporation	-	-	-	-
0875	Logansport Community School Corporation	*	-	*	-
5525	Loogootee Community School Corporation	*	-	*	-
8445	M S D Bluffton-Harrison	*	-	*	23
6460	M S D Boone Township	17	-	19	-
5300	M S D Decatur Township	216	*	287	16
5330	M S D Lawrence Township	980	18	1,499	27
5925	M S D Martinsville Schools	335	*	353	*
6590	M S D Mount Vernon	207	*	261	*
6600	M S D North Posey County Schools	148	-	195	-
4860	M S D of New Durham Township	16	*	17	-
5340	M S D Perry Township	1,990	11	2,374	43
5350	M S D Pike Township	851	10	1,062	40
2960	M S D Shakamak Schools	-	-	-	-
0125	M S D Southwest Allen County	511	11	794	25
7615	M S D Steuben County	10	-	16	*
8050	M S D Wabash County Schools	23	-	38	*
8115	M S D Warren County	*	-	*	-
5360	M S D Warren Township	926	10	1,079	13
5370	M S D Washington Township	832	19	1,221	28



Appendix A: Choice Scholarship Students by School Corporation of Legal Settlement

Corp. No.	Corporation Name	2022-2023		2023-2024	
		Period One	Period Two	Period One	Period Two
5375	M S D Wayne Township	593	*	757	25
5615	Maconaquah School Corporation	*	-	*	-
3995	Madison Consolidated Schools	314	*	378	*
2825	Madison-Grant United School Corporation	33	*	33	-
8045	Manchester Community Schools	31	-	32	*
2865	Marion Community Schools	253	*	315	15
3640	Medora Community School Corporation	*	-	*	-
4600	Merrillville Community School	480	*	578	*
4925	Michigan City Area Schools	445	11	476	*
2275	Middlebury Community Schools	87	-	120	*
6910	Milan Community Schools	47	-	49	-
3335	Mill Creek Community School Corporation	15	-	15	-
2855	Mississinewa Community School Corporation	14	-	20	-
5085	Mitchell Community Schools	*	-	11	-
6820	Monroe Central School Corporation	*	-	*	-
5740	Monroe County Community School Corporation	343	18	510	10
5900	Monroe-Gregg School District	54	*	80	*
5930	Mooresville Consolidated School Corporation	229	*	332	*
3135	Mount Vernon Community School Corporation	184	*	282	*
1970	Muncie Community Schools	143	*	183	*
8305	Nettle Creek School Corporation	-	-	*	-
2400	New Albany-Floyd County Consolidated School Corporation	588	*	990	17
3445	New Castle Community School Corporation	*	-	12	*
4805	New Prairie United School Corporation	17	-	41	*
4255	Nineveh-Hensley-Jackson United Corporation	36	-	39	-
3070	Noblesville Schools	376	*	554	*
0025	North Adams Community Schools	207	-	263	*
6375	North Central Parke Community School Corporation	*	-	*	-
1375	North Daviess Community Schools	13	-	*	-
2735	North Gibson School Corporation	65	*	93	*
3180	North Harrison Community School Corporation	48	-	43	*
7515	North Judson-San Pierre School Corporation	77	-	90	-
4315	North Knox School Corporation	27	-	27	-
5075	North Lawrence Community Schools	170	*	232	*



Appendix A: Choice Scholarship Students by School Corporation of Legal Settlement

Corp. No.	Corporation Name	2022-2023		2023-2024	
		Period One	Period Two	Period One	Period Two
5620	North Miami Community Schools	-	-	-	-
5835	North Montgomery Community School Corporation	14	-	*	-
5945	North Newton School Corporation	26	-	44	-
6715	North Putnam Community Schools	*	-	*	-
7385	North Spencer County School Corporation	19	-	23	*
8010	North Vermillion Community School Corporation	*	-	*	-
3295	North West Hendricks Schools	77	*	97	*
8515	North White School Corporation	*	-	*	-
2040	Northeast Dubois County School Corporation	11	-	18	-
7645	Northeast School Corporation	-	-	-	-
8375	Northeastern Wayne Schools	14	-	18	*
8435	Northern Wells Community Schools	24	-	30	19
0225	Northwest Allen County Schools	525	*	772	15
7350	Northwestern Consolidated School Corporation	29	-	34	*
3470	Northwestern School Corporation	21	-	32	-
5625	Oak Hill United School Corporation	17	-	25	*
7495	Oregon-Davis School Corporation	*	-	*	-
6145	Orleans Community Schools	-	-	*	-
6155	Paoli Community School Corporation	*	-	*	-
7175	Penn-Harris-Madison School Corporation	628	*	915	11
6325	Perry Central Community Schools Corporation	-	-	*	-
5635	Peru Community Schools	*	-	*	*
6445	Pike County School Corporation	*	-	12	-
0775	Pioneer Regional School Corporation	-	-	-	-
3330	Plainfield Community School Corporation	112	*	175	*
5485	Plymouth Community School Corporation	114	*	213	*
6550	Portage Township Schools	239	*	327	*
6520	Porter Township School Corporation	43	*	70	*
4515	Prairie Heights Community School Corporation	*	-	*	-
6825	Randolph Central School Corporation	*	-	*	-
6835	Randolph Eastern School Corporation	*	-	*	-
6805	Randolph Southern School Corporation	*	-	*	-
3815	Rensselaer Central School Corporation	36	*	53	-
5705	Richland-Bean Blossom Community School Corporation	64	-	94	-



Appendix A: Choice Scholarship Students by School Corporation of Legal Settlement

Corp. No.	Corporation Name	2022-2023		2023-2024	
		Period One	Period Two	Period One	Period Two
8385	Richmond Community Schools	297	-	329	*
6080	Rising Sun-Ohio County Community School Corporation	10	-	16	-
4590	River Forest Community School Corporation	42	-	44	-
2645	Rochester Community School Corporation	-	-	-	-
6300	Rockville Community School Corporation	-	-	-	-
1180	Rossville Consolidated School District	29	*	38	-
6995	Rush County Schools	61	-	93	*
8205	Salem Community Schools	*	-	10	*
4670	School City of East Chicago	380	*	402	14
4710	School City of Hammond	1,170	*	1,395	18
4730	School City of Hobart	91	*	130	*
7200	School City of Mishawaka	300	*	381	*
4760	School City of Whiting	30	-	46	-
4720	School Town of Highland	204	-	288	*
4740	School Town of Munster	112	*	172	*
5400	School Town of Speedway	48	-	63	*
7230	Scott County School District I	25	-	18	*
7255	Scott County School District II	88	*	86	*
3675	Seymour Community Schools	478	*	598	*
7285	Shelby Eastern Schools	17	-	22	*
7365	Shelbyville Central Schools	64	-	75	*
3435	Shenandoah School Corporation	15	-	14	-
3055	Sheridan Community Schools	19	-	24	-
5520	Shoals Community School Corporation	-	-	-	-
0945	Silver Creek School Corporation	196	*	279	*
8625	Smith-Green Community Schools	28	-	50	*
0035	South Adams Schools	*	-	*	-
7205	South Bend Community School Corporation	3,531	26	4,447	57
4940	South Central Community School Corporation	13	-	15	-
1600	South Dearborn Community School Corporation	117	-	131	*
2765	South Gibson School Corporation	129	-	204	*
3190	South Harrison Community Schools	100	*	113	*
3415	South Henry School Corporation	*	-	-	-
4325	South Knox School Corporation	33	*	43	-



Appendix A: Choice Scholarship Students by School Corporation of Legal Settlement

Corp. No.	Corporation Name	2022-2023		2023-2024	
		Period One	Period Two	Period One	Period Two
5255	South Madison Community School Corporation	47	*	88	*
5845	South Montgomery Community School Corporation	*	-	*	*
5995	South Newton School Corporation	-	-	*	*
6705	South Putnam Community Schools	*	-	*	-
6865	South Ripley Community School Corporation	24	-	24	-
7445	South Spencer County School Corporation	69	*	91	*
8020	South Vermillion Community School Corporation	17	-	30	*
2100	Southeast Dubois County School Corporation	*	-	*	-
2455	Southeast Fountain School Corporation	*	-	13	-
0815	Southeastern School Corporation	*	-	*	-
3115	Southern Hancock County Community School Corporation	101	*	193	*
8425	Southern Wells Community Schools	-	-	*	*
2110	Southwest Dubois County School Corporation	*	-	18	-
6260	Southwest Parke Community School Corporation	*	-	*	-
7715	Southwest School Corporation	*	-	*	-
7360	Southwestern Consolidated School District Shelby County	*	-	18	-
4000	Southwestern-Jefferson County Consolidated Schools	72	-	89	*
6195	Spencer-Owen Community Schools	44	*	51	-
6160	Springs Valley Community School Corporation	-	-	*	-
1560	Sunman-Dearborn Community School Corporation	151	*	170	*
7775	Switzerland County School Corporation	11	-	*	-
3460	Taylor Community School Corporation	34	-	35	*
6350	Tell City-Troy Township School Corporation	*	-	-	-
7865	Tippecanoe School Corporation	756	*	1,005	*
4445	Tippecanoe Valley School Corporation	15	-	27	-
7945	Tipton Community School Corporation	14	*	21	*
4915	Tri Township Consolidated School Corporation	*	-	*	-
7935	Tri-Central Community Schools	*	-	10	-
8535	Tri-County School Corporation	*	-	*	-
4645	Tri-Creek School Corporation	135	*	235	*
5495	Triton School Corporation	*	-	*	-
6310	Turkey Run Community School Corporation	-	-	-	-
8565	Twin Lakes School Corporation	17	-	17	-
7950	Union County/College Corner Joint School District	13	-	17	-



Appendix A: Choice Scholarship Students by School Corporation of Legal Settlement

Corp. No.	Corporation Name	2022-2023		2023-2024	
		Period One	Period Two	Period One	Period Two
6795	Union School Corporation	*	-	*	-
6530	Union Township School Corporation	38	-	64	*
7215	Union-North United School Corporation	44	*	72	*
6560	Valparaiso Community Schools	198	*	326	11
8030	Vigo County School Corporation	181	-	252	*
4335	Vincennes Community School Corporation	142	*	172	*
8060	Wabash City Schools	12	-	20	-
2285	Wa-Nee Community Schools	47	-	57	-
8130	Warrick County School Corporation	499	*	747	13
4415	Warsaw Community Schools	249	*	335	*
1405	Washington Community Schools	189	*	208	*
4345	Wawasee Community School Corporation	28	-	43	*
1885	Wes-Del Community Schools	12	-	23	-
6630	West Central School Corporation	*	-	10	-
0940	West Clark Community Schools	-	-	-	-
7875	West Lafayette Community School Corporation	29	-	42	-
6065	West Noble School Corporation	10	-	22	-
8220	West Washington School Corporation	*	-	*	-
0615	Western Boone County Community School District	13	-	21	-
3490	Western School Corporation	35	-	62	*
8355	Western Wayne Schools	13	-	15	-
3030	Westfield-Washington Schools	158	*	249	10
4525	Westview School Corporation	20	-	19	-
2980	White River Valley School District	-	-	-	-
4455	Whitko Community School Corporation	45	*	45	*
8665	Whitley County Consolidated Schools	80	*	104	*
1910	Yorktown Community Schools	38	-	50	*
0630	Zionsville Community Schools	78	*	147	*

- Public school corporations with no Choice students have been marked with a hyphen.

- For data for Choice schools that show no data in the table above, please refer to previous versions of the Annual Choice Report.

* Counts of less than 10 have been asterisked to comply with FERPA.



APPENDIX B: CHOICE SCHOLARSHIP STUDENTS BY CHOICE SCHOOL

Appendix B: Choice Scholarship Students By Choice School

School No.	School Name	County	2022-2023		2023-2024	
			Period One	Period Two	Period One	Period Two
A260	Aboite Christian School	Huntington	27	*	45	*
C905	Adventist Christian Elementary	Monroe	*	-	*	*
D912	Al-Haqq Foundation Academy	Marion	43	*	68	*
A515	All Saints Catholic School	Cass	-	-	-	-
D918	Alyssum Montessori School	Allen	22	-	29	*
B806	Ambassador Christian Academy	Lake	158	*	185	*
C250	Anderson Christian School	Madison	31	*	34	*
B760	Andrean High School	Lake	294	*	358	*
A149	Apogee School for the Gifted	Marion	17	*	28	*
B755	Aquinas School at Saint Andrew's	Lake	176	*	209	*
B892	Ascension Lutheran Christian School	Lake	35	-	53	*
A248	Ascension Lutheran School	Allen	51	-	62	-
B764	Avicenna Academy	Lake	-	-	-	-
D196	Bais Yaakov High School of Indiana	St Joseph	19	-	29	-
C575	Baptist Academy	Marion	181	*	197	*
B015	Bethany Christian School	Elkhart	250	-	280	*
B290	Bethesda Christian School	Hendricks	290	*	447	11
C705	Bishop Chatard High School	Marion	313	-	450	*
A120	Bishop Dwenger High School	Allen	589	*	717	15
A125	Bishop Luers High School	Allen	433	*	497	*
B970	Bishop Noll Institute	Lake	416	*	521	*
A172	Blackhawk Christian Elementary School	Allen	398	*	463	*
A170	Blackhawk Christian Jr/Sr High School	Allen	311	*	373	*
A009	Bloomington Islamic School	Monroe	-	-	-	-
C360	Brebeuf Jesuit Preparatory School	Marion	137	-	238	-
C396	Burge Terrace Christian School	Marion	94	*	141	-
B815	Calumet Christian School	Lake	181	-	182	-
C580	Calvary Christian School	Marion	191	-	209	*
C315	Calvary Lutheran School	Marion	192	-	241	*
C690	Capitol City SDA Church School	Marion	31	*	53	*
C715	Cardinal Ritter High School	Marion	509	11	548	*
C700	Cathedral High School	Marion	436	*	608	12



Appendix B: Choice Scholarship Students By Choice School

School No.	School Name	County	2022-2023		2023-2024	
			Period One	Period Two	Period One	Period Two
D415	Central Catholic Jr/Sr High School	Tippecanoe	279	*	367	*
C625	Central Catholic School	Marion	203	-	230	-
A249	Central Christian School	Allen	97	*	136	*
A370	Central Lutheran School	Allen	243	*	319	*
C519	Chapel Hill Christian School	Marion	*	-	58	*
D545	Christ the King School	Vanderburgh	119	*	158	*
C585	Christ the King School	Marion	173	*	248	-
D230	Christ the King School	St Joseph	209	*	346	*
B045	Christian Academy of Indiana	Floyd	493	*	826	23
B493	Christian Academy of Madison	Jefferson	113	-	136	*
B195	Cicero Adventist School	Hamilton	*	-	17	*
B985	City Baptist Schools	Lake	-	-	-	-
C933	Clear Creek Christian School	Monroe	70	14	145	*
A479	ClearView Education	Boone	-	-	-	-
A875	Clinton Christian School	Elkhart	142	*	206	*
C495	Colonial Christian School	Marion	176	*	222	*
A450	Columbus Christian School Inc.	Bartholomew	286	12	391	14
D305	Community Baptist Christian School	St Joseph	143	*	200	*
D862	Community Christian School	Wayne	82	-	111	*
A205	Concordia Evangelical Lutheran School	Allen	310	-	347	*
A195	Concordia Lutheran High School	Allen	398	*	507	*
C281	Cornerstone Baptist Academy	Marion	50	*	78	*
A236	Cornerstone College Preparatory School	Allen	23	*	44	-
D550	Corpus Christi School	Vanderburgh	115	*	158	*
D235	Corpus Christi School	St Joseph	112	-	147	*
B469	Covenant Christian High School	Jasper	84	-	239	-
C527	Covenant Christian High School	Marion	196	-	265	11
C910	Covenant Christian School	Monroe	124	*	140	*
D189	Covenant Christian School	St Joseph	137	-	200	-
B085	Covington Christian School	Fountain	48	-	*	-
C215	Cross Street Christian School	Madison	38	*	39	*
B009	Crossing Educational Center	Elkhart	218	46	195	40
C514	Crosspointe Christian Academy	Marion	187	*	257	*
A275	Crossroad Academy	Allen	*	*	11	*
B771	Crown Point Christian School	Lake	446	*	653	11



Appendix B: Choice Scholarship Students By Choice School

School No.	School Name	County	2022-2023		2023-2024	
			Period One	Period Two	Period One	Period Two
A127	The CTM Academy	Marion	-	-	139	99
A119	Dana Christian School	Vermillion	17	-	22	-
A293	Darul Uloom Al Ansaar	Allen	-	-	16	*
C223	Delaware Christian Academy	Delaware	-	-	-	-
B470	DeMotte Christian School	Jasper	264	*	263	*
C112	Door Prairie Adventist School	LaPorte	*	*	*	*
A126	Edinburgh Christian School	Johnson	10	*	22	*
A990	Elkhart Christian Academy	Elkhart	414	*	543	*
B160	Eman Schools	Hamilton	257	*	280	*
D063	Emmanuel Baptist Academy	Porter	55	-	81	*
A142	Emmanuel Christian School of Fort Wayne	Allen	-	-	50	*
A215	Emmanuel Saint Michael Lutheran School	Allen	255	*	331	*
C680	Emmaus Lutheran School	Marion	41	*	42	*
A220	Emmaus Lutheran School	Allen	102	*	136	*
D485	Evansville Christian School	Vanderburgh	115	-	135	*
D489	Evansville Christian School - Newburgh	Vanderburgh	525	*	682	*
D525	Evansville Day School	Vanderburgh	89	*	142	*
D526	Evansville Day School PK-08	Vanderburgh	-	-	-	-
D625	Evansville Lutheran School	Vanderburgh	116	*	138	*
B748	Faith Academy	Lake	-	-	-	-
B037	Faith Christian School	Fayette	-	-	-	-
D452	Faith Christian School	Tippecanoe	517	*	653	*
A303	FaithPrep Academy	Bartholomew	17	-	30	*
B161	Fishers Christian Academy	Hamilton	94	*	134	*
B565	Flaget Elementary School	Knox	96	*	124	*
B131	Genai Excellence Academy	Elkhart	-	-	11	*
A304	GEO Focus Academy	Marion	99	13	125	18
A724	Good Shepherd Christian Academy	Decatur	13	-	35	*
D555	Good Shepherd School	Vanderburgh	173	*	285	*
C850	Grace Baptist Christian School	Marshall	-	-	79	-
D329	Grace Christian Academy	Scott	109	*	106	*
D310	Granger Christian School	St Joseph	145	*	186	-
C966	Greenwood Christian Academy	Johnson	351	*	428	*
C954	Greenwood Christian Academy High School	Johnson	118	*	168	*
B549	Greenwood Christian School	Johnson	25	*	131	*



Appendix B: Choice Scholarship Students By Choice School

School No.	School Name	County	2022-2023		2023-2024	
			Period One	Period Two	Period One	Period Two
B249	Guerin Catholic High School	Hamilton	164	*	317	*
A004	Hagia Sophia Classical Academy	Marion	*	-	13	*
B790	Hammond Baptist Elementary & High School	Lake	-	-	-	-
A306	Harriet Tubman School of Excellence	Marion	*	*	*	*
C475	Hasten Hebrew Academy of Indianapolis	Marion	36	*	48	-
C275	Heritage Christian School	Marion	606	*	883	*
A746	Heritage Hall Christian School	Delaware	127	*	163	*
C020	Highland Christian School	Lake	337	*	460	*
A138	Hillsboro Christian Academy	Fountain	-	-	23	-
C590	Holy Angels Catholic School	Marion	102	-	128	-
C595	Holy Cross Central School	Marion	132	-	-	-
C267	Holy Cross Lutheran School	Marion	136	*	229	*
A225	Holy Cross Lutheran School	Allen	289	*	352	-
D725	Holy Cross School	Vigo	-	-	-	-
B115	Holy Cross School	Gibson	68	-	90	-
D240	Holy Cross School	St Joseph	254	-	328	-
C211	Holy Cross School	Madison	134	-	144	*
A865	Holy Family School	Dubois	-	-	-	-
B050	Holy Family School	Floyd	106	*	200	*
D245	Holy Family School	St Joseph	255	-	270	*
C545	Holy Name School	Marion	196	-	219	*
D560	Holy Redeemer School	Vanderburgh	169	*	199	*
D565	Holy Rosary School	Vanderburgh	178	-	274	*
D570	Holy Spirit School	Vanderburgh	156	*	163	*
C390	Holy Spirit School	Marion	323	-	367	*
A871	Holy Trinity Catholic School	Dubois	201	-	293	*
A309	Horizon Christian Academy	Allen	-	-	-	-
A302	Horizon Christian Academy II	Allen	-	-	-	-
A307	Horizon Christian Academy III	Allen	-	-	-	-
C282	Horizon Christian School	Marion	241	*	300	*
C563	Horizon Christian School-Shepherd Campus	Marion	99	-	109	*
B725	Howe School	LaGrange	-	-	-	-
B418	Huntington Catholic School	Huntington	107	*	154	*
A122	Illiana Christian High School	Lake	211	*	324	*
C600	Immaculate Heart of Mary School	Marion	40	-	123	*



Appendix B: Choice Scholarship Students By Choice School

School No.	School Name	County	2022-2023		2023-2024	
			Period One	Period Two	Period One	Period Two
B445	Immanuel Lutheran School	Jackson	231	*	288	*
D090	Immanuel Lutheran School	Porter	90	-	152	*
B190	Indiana Academy	Hamilton	91	*	93	-
C175	Indiana Christian Academy	Madison	208	*	267	11
B821	Indiana Horizon Academy	Lake	104	-	130	*
C455	Indianapolis Junior Academy	Marion	45	-	53	-
C679	Indianapolis Southside Christian School	Marion	46	-	49	-
B251	Indy West Christian School	Marion	12	*	76	-
A148	INspire Academy	Hamilton	-	-	10	*
D914	International Leadership School	Allen	295	*	378	28
C678	International School of Indiana (6-8)	Marion	-	-	29	*
C677	International School of Indiana (9-12)	Marion	13	*	34	-
A115	International Soccer Academy of America	St Joseph	22	*	29	-
C513	Islamic Academy of Indianapolis	Marion	50	*	87	*
A308	Islamic Academy of Kendallville	Noble	41	-	59	*
B302	Islamic School of Plainfield	Hendricks	28	-	24	*
D913	Israel School of Excellence	Lake	68	12	63	*
D915	Israel School of Excellence Prep	Lake	-	-	51	*
B483	Jay County Christian Academy	Jay	126	*	147	10
D722	John Paul II Catholic High School	Vigo	-	-	-	-
D875	Kingdom Academy of Bluffton	Wells	-	-	-	68
B295	Kingsway Christian School	Hendricks	282	*	362	*
D440	Lafayette Christian School	Tippecanoe	245	-	318	-
B595	Lakeland Christian Academy	Kosciusko	254	*	330	*
B145	Lakeview Christian School	Grant	109	*	133	*
A740	Lakewood Park Christian School	DeKalb	414	*	540	20
B248	Legacy Christian School	Hamilton	173	*	204	*
B299	Legacy Learning Center	Marion	188	*	268	13
A317	Liberty Academy of Columbus	Bartholomew	-	-	34	10
C226	Liberty Christian Elementary	Madison	148	*	166	*
C225	Liberty Christian School	Madison	185	*	168	*
C224	Liberty Christian School (7-8)	Madison	-	-	-	-
B129	Life Christian STEAM Academy	Lake	16	*	40	*
C927	Lighthouse Christian Academy	Monroe	174	-	233	*
B465	Lutheran Central School	Jackson	85	-	130	-



Appendix B: Choice Scholarship Students By Choice School

School No.	School Name	County	2022-2023		2023-2024	
			Period One	Period Two	Period One	Period Two
C270	Lutheran High School	Marion	180	*	228	*
A235	Lutheran South Unity School	Allen	135	*	196	*
A102	Maple Creek Adventist Academy	Bartholomew	*	*	*	*
D165	Marian High School	St Joseph	526	*	628	*
A208	Marian University Preparatory School	Marion	*	-	*	*
C125	Marquette Catholic High School	LaPorte	152	*	181	*
D530	Mater Dei High School	Vanderburgh	296	*	403	-
D315	Michiana Christian School	St Joseph	38	*	57	*
B747	Midwest Elite Preparatory Academy	Lake	-	-	-	-
D177	Mishawaka Catholic School	St Joseph	194	-	239	*
B915	Mizpah Seventh-Day Adventist School	Lake	-	-	-	-
A324	Montessori Science Academy	Hancock	-	-	25	-
C965	Mooresville Christian Academy	Morgan	343	*	521	*
B951	Morning Star Academy	Lake	47	-	62	*
B904	Mosaic Middle School	Lake	-	-	-	-
A130	Most Precious Blood School	Allen	163	-	169	*
C628	MTI School of Knowledge	Marion	312	*	423	28
D065	Nativity of Our Savior School	Porter	116	-	159	-
C265	Nativity School	Marion	219	-	285	*
D249	New Vision Christian Academy	St Joseph	33	*	41	-
D158	North Liberty Christian School	St Joseph	46	-	77	*
A405	North Star Montessori School	Bartholomew	-	-	-	-
B773	Northwest Adventist Christian School	Lake	*	-	10	*
C105	Notre Dame Elementary School	LaPorte	98	*	150	*
D135	Oldenburg Academy	Franklin	92	-	107	-
B246	Our Lady of Grace School	Hamilton	201	*	300	-
C025	Our Lady of Grace School	Lake	114	*	136	-
D250	Our Lady of Hungary School	St Joseph	134	*	185	*
C605	Our Lady of Lourdes School	Marion	104	-	157	-
B060	Our Lady of Perpetual School	Floyd	156	*	251	*
A575	Our Lady of Providence High School	Clark	158	*	253	*
B535	Our Lady of the Greenwood School	Johnson	184	*	249	*
A106	Our Lady School	Allen	108	-	128	-
C512	Our Shepherd Lutheran School	Hendricks	120	-	158	*
B167	Paddock View Residential Center	Grant	-	-	-	-



Appendix B: Choice Scholarship Students By Choice School

School No.	School Name	County	2022-2023		2023-2024	
			Period One	Period Two	Period One	Period Two
C899	Pinnacle School	Monroe	-	-	-	-
B510	Pope John XXIII School	Jefferson	164	-	199	*
D080	Portage Christian School	Porter	247	*	230	-
A870	Precious Blood School	Dubois	-	-	-	-
A163	Premier Soccer Academy	Hamilton	-	-	*	-
C623	Providence Cristo Rey High School	Marion	202	*	237	*
C110	Queen of All Saints School	LaPorte	133	-	162	*
A135	Queen of Angels School	Allen	128	-	129	*
D198	Queen of Peace School	St Joseph	78	-	103	-
B367	Redeemer Lutheran School	Howard	101	-	153	*
D535	Reitz Memorial High School	Vanderburgh	311	*	423	*
D317	Resurrection Lutheran Academy	St Joseph	52	-	70	-
D610	Resurrection School	Vanderburgh	204	*	296	-
D860	Richmond Academy	Wayne	-	-	-	-
D845	Richmond Adventist Elementary School	Wayne	*	-	10	-
A042	River Montessori High School	St Joseph	26	*	33	-
A121	Riverview Adventist Christian Academy	Vanderburgh	19	-	34	*
B560	Rivet Middle & High School	Knox	108	*	119	-
C320	Roncalli High School	Marion	655	*	854	*
A470	Sacred Heart School	Benton	64	-	85	*
B605	Sacred Heart School	Kosciusko	105	*	132	-
A570	Sacred Heart School	Clark	123	*	152	-
D255	Saint Adalbert School	St Joseph	194	-	194	-
A270	Saint Aloysius Catholic School	Allen	44	-	44	*
C205	Saint Ambrose School	Madison	-	-	-	-
B440	Saint Ambrose School	Jackson	103	*	118	-
C615	Saint Anthony Catholic School	Marion	211	-	241	*
D260	Saint Anthony De Padua School	St Joseph	160	-	193	*
A560	Saint Anthony School	Clark	190	-	225	*
B475	Saint Augustine School	Jasper	39	*	49	*
C295	Saint Barnabas School	Marion	311	-	368	18
A425	Saint Bartholomew School	Bartholomew	205	*	311	22
D590	Saint Benedict Cathedral School	Vanderburgh	134	*	207	*
D805	Saint Bernard Elementary School	Wabash	40	-	50	*
D370	Saint Bernard School	Spencer	83	*	111	*



Appendix B: Choice Scholarship Students By Choice School

School No.	School Name	County	2022-2023		2023-2024	
			Period One	Period Two	Period One	Period Two
D420	Saint Boniface School	Tippecanoe	102	-	91	-
C040	Saint Bridget School	Lake	-	-	-	-
B950	Saint Casimir School	Lake	324	*	327	*
C900	Saint Charles Borromeo School	Monroe	119	-	203	*
A145	Saint Charles Borromeo School	Allen	581	*	678	*
C795	Saint Christopher School	Marion	141	-	176	*
B800	Saint Edward School	Lake	-	-	-	-
D840	Saint Elizabeth Ann Seton School	Wayne	148	-	152	*
B035	Saint Gabriel Parochial School	Fayette	109	*	125	*
D435	Saint James Lutheran School	Tippecanoe	113	*	124	*
B120	Saint James School	Gibson	88	-	152	*
C645	Saint Joan of Arc School	Marion	122	*	136	*
B960	Saint John Bosco School	Lake	165	*	215	*
A695	Saint John Evangelical Lutheran School	Dearborn	47	-	41	*
C400	Saint John Evangelical Lutheran School	Marion	131	-	162	*
B780	Saint John Evangelist School	Lake	129	*	253	*
B020	Saint John Evangelist School	Elkhart	108	-	120	*
B450	Saint John Lutheran School	Jackson	55	-	84	-
B275	Saint John Lutheran School	Harrison	50	-	50	*
C150	Saint John Lutheran School	LaPorte	78	*	118	*
C985	Saint John Lutheran School	Noble	87	*	129	*
A355	Saint John the Baptist Catholic School	Allen	162	-	181	-
D465	Saint John the Baptist School	Tippecanoe	-	-	-	-
D265	Saint John the Baptist School	St Joseph	103	*	111	*
B965	Saint John the Baptist School	Lake	108	-	149	*
D815	Saint John the Baptist School	Warrick	176	-	277	*
A150	Saint John the Baptist School	Allen	220	-	285	*
A365	Saint John-Emmanuel Lutheran School	Allen	64	-	73	-
A340	Saint Joseph Catholic School	Allen	83	-	89	*
A350	Saint Joseph Hessen Cassel Catholic School	Allen	132	-	155	-
C145	Saint Joseph School	LaPorte	-	-	-	-
A735	Saint Joseph School	Dekalb	63	-	68	-
D335	Saint Joseph School	Shelby	55	-	73	*
D605	Saint Joseph School	Vanderburgh	85	-	129	*
B280	Saint Joseph School	Harrison	89	*	79	*



Appendix B: Choice Scholarship Students By Choice School

School No.	School Name	County	2022-2023		2023-2024	
			Period One	Period Two	Period One	Period Two
B105	Saint Joseph School	Gibson	64	*	86	*
D270	Saint Joseph School	St Joseph	202	-	294	*
A035	Saint Joseph School	Adams	177	-	227	*
D225	Saint Joseph's High School	St Joseph	453	*	598	*
A155	Saint Joseph-Saint Elizabeth Campus I	Allen	130	-	152	-
A104	Saint Joseph-Saint Elizabeth Campus II	Allen	321	*	423	*
D275	Saint Jude Catholic School	St Joseph	145	-	176	-
C300	Saint Jude Elementary School	Marion	277	-	390	-
A160	Saint Jude Elementary School	Allen	270	-	302	*
D425	Saint Lawrence Elementary School	Tippecanoe	125	*	166	-
A790	Saint Lawrence School	Delaware	-	-	-	-
A700	Saint Lawrence School	Dearborn	141	*	188	*
C280	Saint Lawrence School	Marion	186	*	197	*
A360	Saint Louis Besancon Catholic School	Allen	104	-	132	-
B227	Saint Louis de Montfort Catholic School	Hamilton	134	-	272	*
D130	Saint Louis School	Ripley	149	*	205	-
C435	Saint Luke School	Marion	175	*	273	16
B285	Saint Malachy School	Hendricks	195	-	308	*
C305	Saint Mark School	Marion	411	*	451	*
D430	Saint Mary Cathedral School	Tippecanoe	110	*	141	-
B835	Saint Mary Catholic Community School	Lake	235	*	364	*
D140	Saint Mary Elementary School	Rush	63	-	98	*
C980	Saint Mary Elementary School	Noble	95	-	120	*
B067	Saint Mary of-the-Knobs Catholic School	Floyd	86	-	175	-
C210	Saint Mary School	Madison	-	-	-	-
A730	Saint Mary School	Decatur	*	-	12	-
A690	Saint Mary School	Dearborn	-	-	-	-
C190	Saint Mary School	Madison	79	-	105	*
B515	Saint Mary School	Jennings	132	*	179	-
A795	Saint Mary School	Delaware	112	-	133	-
B930	Saint Mary School	Lake	146	-	187	-
B065	Saint Mary's Catholic School	Floyd	-	-	-	-
D285	Saint Matthew Cathedral School	St Joseph	277	-	315	*
D095	Saint Matthew School	Posey	50	*	62	*
C440	Saint Matthew School	Marion	179	*	258	10



Appendix B: Choice Scholarship Students By Choice School

School No.	School Name	County	2022-2023		2023-2024	
			Period One	Period Two	Period One	Period Two
B775	Saint Michael School	Lake	100	*	175	-
B095	Saint Michael School	Franklin	143	*	173	*
B265	Saint Michael School	Hancock	80	-	115	*
C855	Saint Michael School	Marshall	134	*	171	-
C650	Saint Michael the Archangel School	Marion	288	-	287	*
C445	Saint Monica School	Marion	270	*	303	*
A680	Saint Nicholas School	Ripley	129	*	152	*
D050	Saint Patrick School	Porter	64	-	125	*
D720	Saint Patrick School	Vigo	191	-	269	*
A685	Saint Paul Catholic School	Dearborn	-	-	-	-
D085	Saint Paul Catholic School	Porter	84	*	146	*
A423	Saint Paul Lutheran Preschool	Bartholomew	-	-	11	-
C130	Saint Paul Lutheran School	LaPorte	70	*	-	-
A245	Saint Paul Lutheran School	Allen	117	-	121	*
B155	Saint Paul Parish School	Grant	96	*	131	*
A550	Saint Paul School	Clark	190	*	242	*
C065	Saint Paul's Lutheran School	Lake	98	-	129	-
C825	Saint Paul's Lutheran School	Marshall	-	-	41	*
A040	Saint Peter Immanuel Lutheran School	Adams	27	-	36	*
D375	Saint Peter Lutheran School	Starke	111	*	126	*
A435	Saint Peter Lutheran School	Bartholomew	285	*	356	-
A250	Saint Peter's Lutheran School	Allen	170	-	200	*
C655	Saint Philip Neri School	Marion	221	*	248	-
D100	Saint Philip School	Posey	98	-	133	*
D164	Saint Pius X Catholic School	St Joseph	186	-	309	*
C450	Saint Pius X School	Marion	124	*	265	*
C310	Saint Roch School	Marion	168	*	234	*
B518	Saint Rose of Lima School	Johnson	52	*	82	*
C665	Saint Simon the Apostle School	Marion	123	-	255	*
C120	Saint Stanislaus Kostka School	LaPorte	87	*	97	-
B865	Saint Stanislaus School	Lake	146	-	155	*
B300	Saint Susanna School	Hendricks	118	12	204	*
D615	Saint Theresa School	Vanderburgh	-	-	-	-
C670	Saint Therese Little Flower School	Marion	249	*	306	*
A175	Saint Therese School	Allen	106	-	96	-



Appendix B: Choice Scholarship Students By Choice School

School No.	School Name	County	2022-2023		2023-2024	
			Period One	Period Two	Period One	Period Two
C675	Saint Thomas Aquinas School	Marion	35	*	91	*
A311	Saint Thomas More Academy	St Joseph	81	-	163	-
C060	Saint Thomas More School	Lake	194	-	316	*
A975	Saint Thomas the Apostle School	Elkhart	135	*	172	-
C160	Saint Vincent DePaul School	Lawrence	129	*	162	*
A980	Saint Vincent DePaul School	Elkhart	160	*	174	*
A180	Saint Vincent DePaul School	Allen	460	*	621	14
D105	Saint Wendel School	Posey	113	-	151	-
B540	Saints Francis and Clare Catholic School	Johnson	137	-	233	*
B395	Saints Joan of Arc & Patrick School	Howard	188	-	224	*
B125	Saints Peter & Paul School	Gibson	*	-	15	-
C710	Scecina Memorial School	Marion	405	*	410	*
C791	School for Community Learning	Marion	48	*	59	*
D842	Seton Catholic High School	Wayne	112	-	120	*
B455	Seymour Christian Academy	Jackson	125	-	128	*
B505	Shawe Memorial High School	Jefferson	162	*	182	*
D195	South Bend Hebrew Day School	St Joseph	156	-	149	-
D300	South Bend Junior Academy School	St Joseph	29	-	40	*
C349	Southport Presbyterian Christian School	Marion	65	-	-	-
B928	Spirit of God Accelerated School	Lake	-	-	-	-
A152	Stepping Stones Education Academy	Marion	-	-	-	*
A200	Suburban Bethlehem Lutheran School	Allen	165	*	203	-
C325	Suburban Christian School	Marion	521	*	595	*
C940	Tabernacle Christian Schools	Morgan	375	*	372	11
D748	Terre Haute SDA School	Vigo	-	-	-	-
C589	The Independence Academy	Marion	26	*	33	*
B136	The King's Academy	Grant	130	*	162	*
C773	The Oaks Academy	Marion	248	*	313	*
B297	The Oaks Academy - Brookside	Marion	197	-	237	*
C774	The Oaks Academy - Middle School	Marion	195	*	231	*
B157	The Montessori School at WPC	Wabash	*	-	17	*
C918	The Prep School	Monroe	-	-	-	-
D458	Tippecanoe Christian School	Tippecanoe	-	-	-	-
B293	Todd Academy	Marion	-	-	-	-
C699	TP Schools	Marion	192	*	242	*



Appendix B: Choice Scholarship Students By Choice School

School No.	School Name	County	2022-2023		2023-2024	
			Period One	Period Two	Period One	Period Two
C375	Traders Point Christian Academy	Boone	204	*	298	15
C561	Trinity Christian School	Marion	140	*	162	*
B901	Trinity Educational Daycare & Academy	Lake	-	-	-	-
B452	Trinity Lutheran High School	Jackson	93	*	145	-
C050	Trinity Lutheran School	Lake	41	-	66	*
A985	Trinity Lutheran School	Elkhart	132	-	202	-
C395	Trinity Lutheran School	Marion	107	*	144	-
B850	Trinity Lutheran School	Lake	118	-	148	-
D217	Trinity School at Greenlawn	St Joseph	132	-	158	-
D907	TROY Center	Whitley	27	*	36	*
B205	Union Bible Academy	Hamilton	61	*	61	-
B241	University High School of Indiana	Hamilton	-	-	113	*
D073	Victory Christian Academy	Porter	239	*	321	*
B600	Warsaw Christian School	Kosciusko	-	-	-	-
A665	Washington Catholic Elementary School	Daviess	77	*	92	-
A660	Washington Catholic Middle/High School	Daviess	126	*	127	*
D580	Westside Catholic School	Vanderburgh	129	*	127	*
A430	White Creek Lutheran School	Bartholomew	81	*	105	-
A375	Woodburn Lutheran School	Allen	90	-	115	-
D281	Yeshiva of South Bend	St Joseph	10	-	15	*
B260	Zion Lutheran School	Hancock	99	*	157	*
B459	Zion Lutheran School	Jackson	*	-	28	-

- Choice schools who did not participate in the Program or did not have any Choice students have been marked with a hyphen.

- For data for Choice schools that show no data in the table above, please refer to previous versions of the Annual Choice Report.

* Counts of less than 10 have been asterisked to comply with FERPA.



APPENDIX C: CHOICE SCHOLARSHIP AWARD AMOUNTS BY CHOICE SCHOOL

Appendix C: Award Amounts By Choice School

School No.	School Name	County	2023-2024	
			Period One	Period Two
A260	Aboite Christian School	Huntington	\$ 270,600.00	*
C905	Adventist Christian Elementary	Monroe	*	*
D912	Al-Haqq Foundation Academy	Marion	\$ 466,937.41	*
A515	All Saints Catholic School	Cass	-	-
D918	Alyssum Montessori School	Allen	\$ 199,754.24	*
B806	Ambassador Christian Academy	Lake	\$ 1,419,937.91	*
C250	Anderson Christian School	Madison	\$ 229,194.40	*
B760	Andrean High School	Lake	\$ 2,416,201.93	*
A149	Apogee School for the Gifted	Marion	\$ 182,930.56	*
B755	Aquinas School at Saint Andrew's	Lake	\$ 1,320,731.58	*
B892	Ascension Lutheran Christian School	Lake	\$ 392,760.95	*
A248	Ascension Lutheran School	Allen	\$ 362,400.00	-
B764	Avicenna Academy	Lake	-	-
D196	Bais Yaakov High School of Indiana	St Joseph	\$ 207,897.81	-
C575	Baptist Academy	Marion	\$ 1,380,923.15	*
B015	Bethany Christian School	Elkhart	\$ 1,759,278.07	*
B290	Bethesda Christian School	Hendricks	\$ 2,668,866.50	\$ 33,433.73
C705	Bishop Chatard High School	Marion	\$ 3,066,824.04	*
A120	Bishop Dwenger High School	Allen	\$ 4,809,454.91	\$ 49,872.12
A125	Bishop Luers High School	Allen	\$ 3,364,873.65	*
B970	Bishop Noll Institute	Lake	\$ 3,727,274.12	*
A172	Blackhawk Christian Elementary School	Allen	\$ 3,024,082.31	*
A170	Blackhawk Christian Jr/Sr High School	Allen	\$ 2,431,929.17	*
A009	Bloomington Islamic School	Monroe	-	-
C360	Brebeuf Jesuit Preparatory School	Marion	\$ 1,585,992.65	-
C396	Burge Terrace Christian School	Marion	\$ 896,865.60	-
B815	Calumet Christian School	Lake	\$ 1,203,800.50	-
C580	Calvary Christian School	Marion	\$ 1,382,789.70	*



Appendix C: Award Amounts By Choice School

School No.	School Name	County	2023-2024	
			Period One	Period Two
C315	Calvary Lutheran School	Marion	\$ 1,509,365.21	*
C690	Capitol City SDA Church School	Marion	\$ 257,950.00	*
C715	Cardinal Ritter High School	Marion	\$ 3,753,176.48	*
C700	Cathedral High School	Marion	\$ 4,103,777.37	\$ 40,610.78
D415	Central Catholic Jr/Sr High School	Tippecanoe	\$ 2,429,112.36	*
C625	Central Catholic School	Marion	\$ 1,624,199.84	-
A249	Central Christian School	Allen	\$ 872,712.08	*
A370	Central Lutheran School	Allen	\$ 2,023,647.84	*
C519	Chapel Hill Christian School	Marion	\$ 355,050.79	*
D545	Christ the King School	Vanderburgh	\$ 1,037,037.83	*
C585	Christ the King School	Marion	\$ 1,410,147.65	-
D230	Christ the King School	St Joseph	\$ 2,372,239.30	*
B045	Christian Academy of Indiana	Floyd	\$ 5,163,505.35	\$ 73,607.75
B493	Christian Academy of Madison	Jefferson	\$ 800,482.74	*
B195	Cicero Adventist School	Hamilton	\$ 84,085.00	*
B985	City Baptist Schools	Lake	-	-
C933	Clear Creek Christian School	Monroe	\$ 775,750.00	*
A479	ClearView Education	Boone	-	-
A875	Clinton Christian School	Elkhart	\$ 1,290,064.19	*
C495	Colonial Christian School	Marion	\$ 1,405,834.12	*
A450	Columbus Christian School Inc.	Bartholomew	\$ 2,432,380.03	\$ 43,730.37
D305	Community Baptist Christian School	St Joseph	\$ 1,389,945.00	*
D862	Community Christian School	Wayne	\$ 561,154.35	*
A205	Concordia Evangelical Lutheran School	Allen	\$ 2,214,679.47	*
A195	Concordia Lutheran High School	Allen	\$ 3,425,227.76	*
C281	Cornerstone Baptist Academy	Marion	\$ 486,774.58	*
A236	Cornerstone College Preparatory School	Allen	\$ 294,561.00	-
D550	Corpus Christi School	Vanderburgh	\$ 1,006,547.37	*
D235	Corpus Christi School	St Joseph	\$1,008,420.00	*
B469	Covenant Christian High School	Jasper	\$ 1,527,660.92	-
C527	Covenant Christian High School	Marion	\$ 1,727,195.89	\$ 34,877.52
C910	Covenant Christian School	Monroe	\$ 904,787.00	*
D189	Covenant Christian School	St Joseph	\$ 1,340,891.34	-
B085	Covington Christian School	Fountain	*	-



Appendix C: Award Amounts By Choice School

School No.	School Name	County	2023-2024	
			Period One	Period Two
C215	Cross Street Christian School	Madison	\$ 267,172.50	*
B009	Crossing Educational Center	Elkhart	\$ 1,360,430.12	\$141,079.77
C514	Crosspointe Christian Academy	Marion	\$ 1,587,495.98	*
A275	Crossroad Academy	Allen	\$ 72,495.00	*
B771	Crown Point Christian School	Lake	\$ 4,074,319.45	\$ 34,113.89
A127	The CTM Academy	Marion	\$ 890,535.86	\$ 317,669.71
A119	Dana Christian School	Vermillion	\$ 129,500.00	-
A293	Darul Uloom Al Ansaar	Allen	\$ 107,200.00	*
C223	Delaware Christian Academy	Delaware	-	-
B470	DeMotte Christian School	Jasper	\$ 1,642,950.25	*
C112	Door Prairie Adventist School	LaPorte	*	*
A126	Edinburgh Christian School	Johnson	\$ 134,416.16	*
A990	Elkhart Christian Academy	Elkhart	\$ 3,545,986.94	*
B160	Eman Schools	Hamilton	\$ 1,749,420.68	*
D063	Emmanuel Baptist Academy	Porter	\$ 493,774.62	*
A142	Emmanuel Christian School of Fort Wayne	Allen	\$ 314,710.76	*
A215	Emmanuel Saint Michael Lutheran School	Allen	\$ 1,992,620.00	*
C680	Emmaus Lutheran School	Marion	\$ 286,925.53	*
A220	Emmaus Lutheran School	Allen	\$ 754,800.00	*
D485	Evansville Christian School	Vanderburgh	\$ 883,698.63	*
D489	Evansville Christian School - Newburgh	Vanderburgh	\$ 4,450,365.77	*
D525	Evansville Day School	Vanderburgh	\$ 944,142.32	*
D526	Evansville Day School PK-08	Vanderburgh	-	-
D625	Evansville Lutheran School	Vanderburgh	\$ 910,677.45	*
B748	Faith Academy	Lake	-	-
B037	Faith Christian School	Fayette	-	-
D452	Faith Christian School	Tippecanoe	\$ 4,214,033.14	*
A303	FaithPrep Academy	Bartholomew	\$ 193,973.32	*
B161	Fishers Christian Academy	Hamilton	\$ 832,903.34	*
B565	Flaget Elementary School	Knox	\$ 611,970.00	*
B131	Genai Excellence Academy	Elkhart	\$ 73,188.13	*
A304	GEO Focus Academy	Marion	\$ 840,210.15	\$ 59,543.61
A724	Good Shepherd Christian Academy	Decatur	\$ 174,500.00	*
D555	Good Shepherd School	Vanderburgh	\$ 1,461,122.52	*



Appendix C: Award Amounts By Choice School

School No.	School Name	County	2023-2024	
			Period One	Period Two
C850	Grace Baptist Christian School	Marshall	\$ 481,585.80	-
D329	Grace Christian Academy	Scott	\$ 687,555.53	*
D310	Granger Christian School	St Joseph	\$ 1,253,038.76	-
C966	Greenwood Christian Academy	Johnson	\$ 2,722,446.17	*
C954	Greenwood Christian Academy High School	Johnson	\$ 1,081,744.54	*
B549	Greenwood Christian School	Johnson	\$ 629,260.00	*
B249	Guerin Catholic High School	Hamilton	\$ 1,968,023.73	*
A004	Hagia Sophia Classical Academy	Marion	\$ 85,796.93	*
B790	Hammond Baptist Elementary & High School	Lake	-	-
A306	Harriet Tubman School of Excellence	Marion	*	*
C475	Hasten Hebrew Academy of Indianapolis	Marion	\$ 321,190.20	-
C275	Heritage Christian School	Marion	\$ 5,697,075.99	*
A746	Heritage Hall Christian School	Delaware	\$1,003,500.00	*
C020	Highland Christian School	Lake	\$ 3,076,172.35	*
A138	Hillsboro Christian Academy	Fountain	\$ 137,180.00	-
C590	Holy Angels Catholic School	Marion	\$ 892,686.52	-
C595	Holy Cross Central School	Marion	-	-
C267	Holy Cross Lutheran School	Marion	\$ 1,464,308.13	*
A225	Holy Cross Lutheran School	Allen	\$ 2,173,732.33	-
D725	Holy Cross School	Vigo	-	-
B115	Holy Cross School	Gibson	\$ 293,950.00	-
D240	Holy Cross School	St Joseph	\$ 2,243,029.86	-
C211	Holy Cross School	Madison	\$ 1,004,212.00	*
A865	Holy Family School	Dubois	-	-
B050	Holy Family School	Floyd	\$ 1,234,871.01	*
D245	Holy Family School	St Joseph	\$ 1,840,302.91	*
C545	Holy Name School	Marion	\$ 1,340,685.83	*
D560	Holy Redeemer School	Vanderburgh	\$ 1,148,485.07	*
D565	Holy Rosary School	Vanderburgh	\$ 1,404,512.09	*
D570	Holy Spirit School	Vanderburgh	\$ 1,085,196.18	*
C390	Holy Spirit School	Marion	\$ 2,044,239.14	*
A871	Holy Trinity Catholic School	Dubois	\$ 1,342,640.90	*
A309	Horizon Christian Academy	Allen	-	-
A302	Horizon Christian Academy II	Allen	-	-



Appendix C: Award Amounts By Choice School

School No.	School Name	County	2023-2024	
			Period One	Period Two
A307	Horizon Christian Academy III	Allen	-	-
C282	Horizon Christian School	Marion	\$ 2,030,160.11	*
C563	Horizon Christian School-Shepherd Campus	Marion	\$ 785,977.41	*
B725	Howe School	LaGrange	-	-
B418	Huntington Catholic School	Huntington	\$ 986,080.98	*
A122	Illiana Christian High School	Lake	\$ 2,059,589.42	*
C600	Immaculate Heart of Mary School	Marion	\$ 686,554.40	*
B445	Immanuel Lutheran School	Jackson	\$ 1,854,822.80	*
D090	Immanuel Lutheran School	Porter	\$ 954,637.36	*
B190	Indiana Academy	Hamilton	\$ 636,221.83	-
C175	Indiana Christian Academy	Madison	\$ 1,729,534.63	\$ 35,485.52
B821	Indiana Horizon Academy	Lake	\$ 820,744.77	*
C455	Indianapolis Junior Academy	Marion	\$ 361,621.02	-
C679	Indianapolis Southside Christian School	Marion	\$ 284,200.00	-
B251	Indy West Christian School	Marion	\$ 497,941.32	-
A148	INspire Academy	Hamilton	\$ 61,750.00	*
D914	International Leadership School	Allen	\$ 2,584,066.45	\$ 95,494.84
C678	International School of Indiana (6-8)	Marion	\$ 196,513.79	*
C677	International School of Indiana (9-12)	Marion	\$ 229,071.15	-
A115	International Soccer Academy of America	St Joseph	\$ 198,962.66	-
C513	Islamic Academy of Indianapolis	Marion	\$ 574,192.76	*
A308	Islamic Academy of Kendallville	Noble	\$ 373,015.50	*
B302	Islamic School of Plainfield	Hendricks	\$ 149,944.64	*
D913	Israel School of Excellence	Lake	\$ 482,498.67	*
D915	Israel School of Excellence Prep	Lake	\$ 388,779.19	*
B483	Jay County Christian Academy	Jay	\$ 953,698.53	\$ 32,437.40
D722	John Paul II Catholic High School	Vigo	-	-
D875	Kingdom Academy of Bluffton	Wells	-	\$73,930.00
B295	Kingsway Christian School	Hendricks	\$ 2,288,924.95	*
D440	Lafayette Christian School	Tippecanoe	\$ 2,030,700.44	-
B595	Lakeland Christian Academy	Kosciusko	\$ 2,099,537.03	*
B145	Lakeview Christian School	Grant	\$ 944,472.71	*
A740	Lakewood Park Christian School	DeKalb	\$ 3,473,053.22	\$ 63,993.54
B248	Legacy Christian School	Hamilton	\$ 1,264,614.29	*
B299	Legacy Learning Center	Marion	\$ 1,859,365.48	\$ 45,496.86



Appendix C: Award Amounts By Choice School

School No.	School Name	County	2023-2024	
			Period One	Period Two
A317	Liberty Academy of Columbus	Bartholomew	\$ 218,639.87	\$32,063.20
C226	Liberty Christian Elementary	Madison	\$ 1,093,392.95	*
C225	Liberty Christian School	Madison	\$ 1,143,758.37	*
C224	Liberty Christian School (7-8)	Madison	-	-
B129	Life Christian STEAM Academy	Lake	\$ 311,351.65	*
C927	Lighthouse Christian Academy	Monroe	\$ 1,487,837.08	*
B465	Lutheran Central School	Jackson	\$ 839,063.54	-
C270	Lutheran High School	Marion	\$ 1,505,536.24	*
A235	Lutheran South Unity School	Allen	\$ 1,351,840.84	*
A102	Maple Creek Adventist Academy	Bartholomew	*	*
D165	Marian High School	St Joseph	\$ 4,291,895.37	*
A208	Marian University Preparatory School	Marion	*	*
C125	Marquette Catholic High School	LaPorte	\$ 1,280,906.55	*
D530	Mater Dei High School	Vanderburgh	\$ 2,645,022.81	-
D315	Michiana Christian School	St Joseph	\$ 365,266.25	*
B747	Midwest Elite Preparatory Academy	Lake	-	-
D177	Mishawaka Catholic School	St Joseph	\$ 1,590,185.45	*
B915	Mizpah Seventh-Day Adventist School	Lake	-	-
A324	Montessori Science Academy	Hancock	\$ 159,769.66	-
C965	Mooresville Christian Academy	Morgan	\$ 3,361,579.08	*
B951	Morning Star Academy	Lake	\$ 431,359.39	*
B904	Mosaic Middle School	Lake	-	-
A130	Most Precious Blood School	Allen	\$ 1,138,536.59	*
C628	MTI School of Knowledge	Marion	\$ 2,923,567.73	\$ 94,933.51
D065	Nativity of Our Savior School	Porter	\$ 989,724.84	-
C265	Nativity School	Marion	\$ 1,560,203.33	*
D249	New Vision Christian Academy	St Joseph	\$ 278,813.25	-
D158	North Liberty Christian School	St Joseph	\$ 338,800.00	*
A405	North Star Montessori School	Bartholomew	-	-
B773	Northwest Adventist Christian School	Lake	\$ 61,904.73	*
C105	Notre Dame Elementary School	LaPorte	\$ 1,029,695.82	*
D135	Oldenburg Academy	Franklin	\$ 677,999.56	-
B246	Our Lady of Grace School	Hamilton	\$ 1,824,200.25	-
C025	Our Lady of Grace School	Lake	\$ 834,360.00	-



Appendix C: Award Amounts By Choice School

School No.	School Name	County	2023-2024	
			Period One	Period Two
D250	Our Lady of Hungary School	St Joseph	\$ 1,266,724.27	*
C605	Our Lady of Lourdes School	Marion	\$ 980,967.05	-
B060	Our Lady of Perpetual School	Floyd	\$ 1,410,071.48	*
A575	Our Lady of Providence High School	Clark	\$ 1,626,271.49	*
B535	Our Lady of the Greenwood School	Johnson	\$ 1,533,184.07	*
A106	Our Lady School	Allen	\$ 839,274.81	-
C512	Our Shepherd Lutheran School	Hendricks	\$ 999,433.98	*
B167	Paddock View Residential Center	Grant	-	-
C899	Pinnacle School	Monroe	-	-
B510	Pope John XXIII School	Jefferson	\$ 1,164,350.00	*
D080	Portage Christian School	Porter	\$ 1,537,042.88	-
A870	Precious Blood School	Dubois	-	-
A163	Premier Soccer Academy	Hamilton	*	-
C623	Providence Cristo Rey High School	Marion	\$ 1,699,734.07	*
C110	Queen of All Saints School	LaPorte	\$ 1,124,567.96	*
A135	Queen of Angels School	Allen	\$ 885,064.89	*
D198	Queen of Peace School	St Joseph	\$ 679,007.15	-
B367	Redeemer Lutheran School	Howard	\$ 1,063,331.48	*
D535	Reitz Memorial High School	Vanderburgh	\$ 2,765,865.52	*
D317	Resurrection Lutheran Academy	St Joseph	\$ 496,619.80	-
D610	Resurrection School	Vanderburgh	\$ 1,865,815.58	-
D860	Richmond Academy	Wayne	-	-
D845	Richmond Adventist Elementary School	Wayne	\$ 62,155.38	-
A042	River Montessori High School	St Joseph	\$ 231,377.93	-
A121	Riverview Adventist Christian Academy	Vanderburgh	\$ 215,399.14	*
B560	Rivet Middle & High School	Knox	\$ 550,845.00	-
C320	Roncalli High School	Marion	\$ 5,651,614.21	*
A470	Sacred Heart School	Benton	\$ 336,300.00	*
B605	Sacred Heart School	Kosciusko	\$ 840,564.70	-
A570	Sacred Heart School	Clark	\$ 979,166.67	-
D255	Saint Adalbert School	St Joseph	\$ 1,387,416.58	-
A270	Saint Aloysius Catholic School	Allen	\$ 291,357.14	*
C205	Saint Ambrose School	Madison	-	-
B440	Saint Ambrose School	Jackson	\$ 567,815.50	-



Appendix C: Award Amounts By Choice School

School No.	School Name	County	2023-2024	
			Period One	Period Two
C615	Saint Anthony Catholic School	Marion	\$ 1,695,043.94	*
D260	Saint Anthony De Padua School	St Joseph	\$ 1,342,172.83	*
A560	Saint Anthony School	Clark	\$ 1,413,484.10	*
B475	Saint Augustine School	Jasper	\$ 289,505.00	*
C295	Saint Barnabas School	Marion	\$ 1,232,005.11	\$ 17,156.37
A425	Saint Bartholomew School	Bartholomew	\$ 1,897,197.84	\$ 66,912.64
D590	Saint Benedict Cathedral School	Vanderburgh	\$ 1,305,809.15	*
D805	Saint Bernard Elementary School	Wabash	\$ 328,460.03	*
D370	Saint Bernard School	Spencer	\$ 649,500.00	*
D420	Saint Boniface School	Tippecanoe	\$ 602,442.44	-
C040	Saint Bridget School	Lake	-	-
B950	Saint Casimir School	Lake	\$ 2,059,586.43	*
C900	Saint Charles Borromeo School	Monroe	\$ 1,002,408.28	*
A145	Saint Charles Borromeo School	Allen	\$ 4,607,514.41	*
C795	Saint Christopher School	Marion	\$ 1,133,821.87	*
B800	Saint Edward School	Lake	-	-
D840	Saint Elizabeth Ann Seton School	Wayne	\$ 883,435.00	*
B035	Saint Gabriel Parochial School	Fayette	\$ 801,589.02	*
D435	Saint James Lutheran School	Tippecanoe	\$ 826,714.06	*
B120	Saint James School	Gibson	\$ 554,100.00	*
C645	Saint Joan of Arc School	Marion	\$ 973,554.13	*
B960	Saint John Bosco School	Lake	\$ 1,454,099.03	*
A695	Saint John Evangelical Lutheran School	Dearborn	\$ 251,125.00	*
C400	Saint John Evangelical Lutheran School	Marion	\$ 1,035,436.22	*
B780	Saint John Evangelist School	Lake	\$ 1,292,905.96	*
B020	Saint John Evangelist School	Elkhart	\$ 723,303.60	*
B450	Saint John Lutheran School	Jackson	\$ 487,200.00	-
B275	Saint John Lutheran School	Harrison	\$ 280,000.00	*
C150	Saint John Lutheran School	LaPorte	\$ 784,230.07	*
C985	Saint John Lutheran School	Noble	\$ 749,490.00	*
A355	Saint John the Baptist Catholic School	Allen	\$ 1,217,589.88	-
D465	Saint John the Baptist School	Tippecanoe	-	-
D265	Saint John the Baptist School	St Joseph	\$ 756,303.25	*
B965	Saint John the Baptist School	Lake	\$ 757,241.63	*



Appendix C: Award Amounts By Choice School

School No.	School Name	County	2023-2024	
			Period One	Period Two
D815	Saint John the Baptist School	Warrick	\$ 1,328,581.37	*
A150	Saint John the Baptist School	Allen	\$ 1,927,307.11	*
A365	Saint John-Emmanuel Lutheran School	Allen	\$ 420,400.00	-
A340	Saint Joseph Catholic School	Allen	\$ 598,482.80	*
A350	Saint Joseph Hessen Cassel Catholic School	Allen	\$ 1,022,416.54	-
C145	Saint Joseph School	LaPorte	-	-
A735	Saint Joseph School	Dekalb	\$ 429,440.63	-
D335	Saint Joseph School	Shelby	\$ 386,207.40	*
D605	Saint Joseph School	Vanderburgh	\$ 605,241.91	*
B280	Saint Joseph School	Harrison	\$ 489,523.82	*
B105	Saint Joseph School	Gibson	\$ 390,234.02	*
D270	Saint Joseph School	St Joseph	\$ 2,060,646.40	*
A035	Saint Joseph School	Adams	\$ 1,418,900.32	*
D225	Saint Joseph's High School	St Joseph	\$ 4,193,885.54	*
A155	Saint Joseph-Saint Elizabeth Campus I	Allen	\$ 1,053,163.66	-
A104	Saint Joseph-Saint Elizabeth Campus II	Allen	\$ 2,659,337.41	*
D275	Saint Jude Catholic School	St Joseph	\$ 1,244,423.29	-
C300	Saint Jude Elementary School	Marion	\$ 1,868,551.78	-
A160	Saint Jude Elementary School	Allen	\$ 2,006,419.07	*
D425	Saint Lawrence Elementary School	Tippecanoe	\$ 1,097,291.09	-
A790	Saint Lawrence School	Delaware	-	-
A700	Saint Lawrence School	Dearborn	\$ 1,115,106.72	*
C280	Saint Lawrence School	Marion	\$ 1,277,884.13	*
A360	Saint Louis Besancon Catholic School	Allen	\$ 887,601.30	-
B227	Saint Louis de Montfort Catholic School	Hamilton	\$ 1,374,425.09	*
D130	Saint Louis School	Ripley	\$ 1,103,150.00	-
C435	Saint Luke School	Marion	\$ 1,533,802.44	\$ 45,846.41
B285	Saint Malachy School	Hendricks	\$ 1,907,074.74	*
C305	Saint Mark School	Marion	\$ 2,796,077.81	*
D430	Saint Mary Cathedral School	Tippecanoe	\$ 935,884.81	-
B835	Saint Mary Catholic Community School	Lake	\$ 2,262,064.48	*
D140	Saint Mary Elementary School	Rush	\$ 488,000.00	*
C980	Saint Mary Elementary School	Noble	\$ 739,111.57	*
B067	Saint Mary-of-the-Knobs Catholic School	Floyd	\$ 1,046,500.00	-
C210	Saint Mary School	Madison	-	-



Appendix C: Award Amounts By Choice School

School No.	School Name	County	2023-2024	
			Period One	Period Two
A730	Saint Mary School	Decatur	\$ 42,750.00	-
A690	Saint Mary School	Dearborn	-	-
C190	Saint Mary School	Madison	\$ 678,979.99	*
B515	Saint Mary School	Jennings	\$ 828,453.04	-
A795	Saint Mary School	Delaware	\$ 934,087.80	-
B930	Saint Mary School	Lake	\$ 991,100.00	-
B065	Saint Mary's Catholic School	Floyd	-	-
D285	Saint Matthew Cathedral School	St Joseph	\$ 2,184,184.14	*
D095	Saint Matthew School	Posey	\$ 330,000.00	*
C440	Saint Matthew School	Marion	\$ 1,666,340.12	\$ 31,674.92
B775	Saint Michael School	Lake	\$ 1,115,538.98	-
B095	Saint Michael School	Franklin	\$ 813,100.00	*
B265	Saint Michael School	Hancock	\$ 693,200.00	*
C855	Saint Michael School	Marshall	\$ 1,091,825.68	-
C650	Saint Michael the Archangel School	Marion	\$ 1,848,759.05	*
C445	Saint Monica School	Marion	\$ 1,834,259.45	*
A680	Saint Nicholas School	Ripley	\$ 826,000.00	*
D050	Saint Patrick School	Porter	\$ 712,886.11	*
D720	Saint Patrick School	Vigo	\$ 1,300,664.00	*
A685	Saint Paul Catholic School	Dearborn	-	-
D085	Saint Paul Catholic School	Porter	\$ 765,185.89	*
A423	Saint Paul Lutheran Preschool	Bartholomew	\$ 33,000.00	-
C130	Saint Paul Lutheran School	LaPorte	-	-
A245	Saint Paul Lutheran School	Allen	\$ 824,548.52	*
B155	Saint Paul Parish School	Grant	\$ 909,899.08	*
A550	Saint Paul School	Clark	\$ 1,453,576.98	*
C065	Saint Paul's Lutheran School	Lake	\$ 867,996.30	-
C825	Saint Paul's Lutheran School	Marshall	\$ 256,997.12	*
A040	Saint Peter Immanuel Lutheran School	Adams	\$ 150,050.00	*
D375	Saint Peter Lutheran School	Starke	\$ 845,468.78	*
A435	Saint Peter Lutheran School	Bartholomew	\$ 2,284,222.86	-
A250	Saint Peter's Lutheran School	Allen	\$ 1,374,697.29	*
C655	Saint Philip Neri School	Marion	\$ 1,778,876.65	-
D100	Saint Philip School	Posey	\$ 486,049.28	*
D164	Saint Pius X Catholic School	St Joseph	\$ 2,038,588.27	*



Appendix C: Award Amounts By Choice School

School No.	School Name	County	2023-2024	
			Period One	Period Two
C450	Saint Pius X School	Marion	\$ 1,349,490.94	*
C310	Saint Roch School	Marion	\$ 1,414,282.23	*
B518	Saint Rose of Lima School	Johnson	\$ 514,143.54	*
C665	Saint Simon the Apostle School	Marion	\$ 1,370,756.48	*
C120	Saint Stanislaus Kostka School	LaPorte	\$ 611,025.10	-
B865	Saint Stanislaus School	Lake	\$ 1,067,779.88	*
B300	Saint Susanna School	Hendricks	\$ 1,229,045.28	*
D615	Saint Theresa School	Vanderburgh	-	-
C670	Saint Therese Little Flower School	Marion	\$ 2,133,033.96	*
A175	Saint Therese School	Allen	\$ 633,662.00	-
C675	Saint Thomas Aquinas School	Marion	\$ 580,031.26	*
A311	Saint Thomas More Academy	St Joseph	\$ 1,139,116.90	-
C060	Saint Thomas More School	Lake	\$ 2,031,096.12	*
A975	Saint Thomas the Apostle School	Elkhart	\$ 1,142,518.34	-
C160	Saint Vincent DePaul School	Lawrence	\$ 885,953.54	*
A980	Saint Vincent DePaul School	Elkhart	\$ 1,118,191.80	*
A180	Saint Vincent DePaul School	Allen	\$ 4,079,206.58	\$ 46,004.61
D105	Saint Wendel School	Posey	\$ 851,185.00	-
B540	Saints Francis and Clare Catholic School	Johnson	\$ 1,100,081.50	*
B395	Saints Joan of Arc & Patrick School	Howard	\$ 1,202,874.06	*
B125	Saints Peter & Paul School	Gibson	\$ 83,667.35	-
C710	Scecina Memorial School	Marion	\$ 2,905,132.13	*
C791	School for Community Learning	Marion	\$ 410,178.10	*
D842	Seton Catholic High School	Wayne	\$ 776,038.37	*
B455	Seymour Christian Academy	Jackson	\$ 742,400.00	*
B505	Shawe Memorial High School	Jefferson	\$ 1,150,928.75	*
D195	South Bend Hebrew Day School	St Joseph	\$ 1,068,164.61	-
D300	South Bend Junior Academy School	St Joseph	\$ 214,872.50	*
C349	Southport Presbyterian Christian School	Marion	-	-
B928	Spirit of God Accelerated School	Lake	-	-
A152	Stepping Stones Education Academy	Marion	-	*
A200	Suburban Bethlehem Lutheran School	Allen	\$ 1,043,420.00	-
C325	Suburban Christian School	Marion	\$ 3,629,500.00	*
C940	Tabernacle Christian Schools	Morgan	\$ 2,389,636.18	\$ 35,814.47



Appendix C: Award Amounts By Choice School

School No.	School Name	County	2023-2024	
			Period One	Period Two
D748	Terre Haute SDA School	Vigo	-	-
C589	The Independence Academy	Marion	\$ 218,498.26	*
B136	The King's Academy	Grant	\$ 1,034,423.72	*
C773	The Oaks Academy	Marion	\$ 2,167,870.58	*
B297	The Oaks Academy - Brookside	Marion	\$ 1,652,543.48	*
C774	The Oaks Academy - Middle School	Marion	\$ 1,611,882.16	*
B157	The Montessori School at WPC	Wabash	\$ 106,028.12	*
C918	The Prep School	Monroe	-	-
D458	Tippecanoe Christian School	Tippecanoe	-	-
B293	Todd Academy	Marion	-	-
C699	TP Schools	Marion	\$ 1,590,276.49	*
C375	Traders Point Christian Academy	Boone	\$ 1,894,579.59	\$ 49,001.38
C561	Trinity Christian School	Marion	\$ 1,091,074.08	*
B901	Trinity Educational Daycare & Academy	Lake	-	-
B452	Trinity Lutheran High School	Jackson	\$ 911,169.71	-
C050	Trinity Lutheran School	Lake	\$ 430,059.77	*
A985	Trinity Lutheran School	Elkhart	\$ 1,228,515.35	-
C395	Trinity Lutheran School	Marion	\$ 1,013,694.71	-
B850	Trinity Lutheran School	Lake	\$ 930,986.70	-
D217	Trinity School at Greenlawn	St Joseph	\$ 1,088,774.00	-
D907	TROY Center	Whitley	\$ 223,645.20	*
B205	Union Bible Academy	Hamilton	\$ 335,500.00	-
B241	University High School of Indiana	Hamilton	\$ 721,479.09	*
D073	Victory Christian Academy	Porter	\$ 1,985,872.57	*
B600	Warsaw Christian School	Kosciusko	-	-
A665	Washington Catholic Elementary School	Daviess	\$ 610,776.26	-
A660	Washington Catholic Middle/High School	Daviess	\$ 843,721.33	*
D580	Westside Catholic School	Vanderburgh	\$ 817,502.82	*
A430	White Creek Lutheran School	Bartholomew	\$ 666,190.33	-
A375	Woodburn Lutheran School	Allen	\$ 773,746.95	-
D281	Yeshiva of South Bend	St Joseph	\$ 107,533.35	*
B260	Zion Lutheran School	Hancock	\$ 997,575.38	*
B459	Zion Lutheran School	Jackson	\$ 175,029.63	-

- Choice schools who did not participate in the Program or did not have any Choice students have been marked with a hyphen.



Appendix C: Award Amounts By Choice School

School No.	School Name	County	2023-2024	
			Period One	Period Two
- For data for Choice schools that show no data in the table above, please refer to previous versions of the Annual Choice Report.				
* Counts of less than 10 have been asterisked to comply with FERPA.				



APPENDIX D: AWARD AMOUNTS BY SCHOOL CORPORATION OF LEGAL SETTLEMENT

Appendix D: Award Amounts by School Corporation of Legal Settlement of Choice Students			
Corp. No.	Corporation Name	2023-2024	
		Period One	Period Two
0015	Adams Central Community Schools	*	\$ 17,985.00
5265	Alexandria Community School Corporation	\$ 609,276.74	*
5275	Anderson Community School Corporation	\$ 5,405,858.98	\$ 87,995.36
5470	Argos Community Schools	\$ 63,930.00	-
2435	Attica Consolidated School Corporation	*	-
3315	Avon Community School Corporation	\$ 4,836,837.20	\$ 40,512.52
1315	Barr-Reeve Community Schools	*	-
0365	Bartholomew Consolidated School Corporation	\$ 6,370,369.32	\$ 117,954.66
6895	Batesville Community School Corporation	\$ 1,216,558.48	-
2260	Baugo Community Schools	\$ 417,951.60	-
5380	Beech Grove City Schools	\$ 1,206,841.30	*
0395	Benton Community School Corporation	\$ 531,870.99	*
0515	Blackford County Schools	*	-
2920	Bloomfield School District	-	-
3405	Blue River Valley Schools	*	-
0935	Borden-Henryville School Corporation	\$ 900,272.94	-
5480	Bremen Public Schools	\$ 210,940.42	*
0670	Brown County School Corporation	\$ 300,442.88	*
3305	Brownsburg Community School Corporation	\$ 4,282,047.13	\$ 40,222.26
3695	Brownstown Central Community School Corporation	\$ 1,266,279.44	*
3455	C A Beard Memorial School Corporation	*	-
6340	Cannelton City Schools	-	-
3060	Carmel Clay Schools	\$ 2,582,217.33	*
0750	Carroll Consolidated School Corporation	\$ 70,470.84	-
2650	Caston School Corporation	-	-
4205	Center Grove Community School Corporation	\$ 3,390,357.62	\$ 70,124.40
8360	Centerville-Abington Community Schools	\$ 144,449.05	-
6055	Central Noble Community School Corporation	\$ 117,133.13	-
4145	Clark-Pleasant Community School Corporation	\$ 2,404,836.86	*
1000	Clarksville Community School Corporation	\$ 494,124.25	-
1125	Clay Community Schools	*	-
1150	Clinton Central School Corporation	*	*



Appendix D: Award Amounts by School Corporation of Legal Settlement of Choice Students

Corp. No.	Corporation Name	2023-2024	
		Period One	Period Two
1160	Clinton Prairie School Corporation	\$ 168,684.00	*
6750	Cloverdale Community Schools	*	-
1170	Community Schools of Frankfort	\$ 213,524.71	*
2270	Concord Community Schools	\$ 1,205,352.02	*
2440	Covington Community School Corporation	*	-
1900	Cowan Community School Corporation	*	-
1300	Crawford County Community School Corporation	\$ 83,347.12	-
5855	Crawfordsville Community Schools	*	*
3710	Crothersville Community Schools	\$ 182,664.25	-
4660	Crown Point Community School Corporation	\$ 3,563,824.79	\$ 43,230.52
5455	Culver Community Schools Corporation	\$ 174,500.24	*
1940	Daleville Community Schools	\$ 101,982.12	-
3325	Danville Community School Corporation	\$ 466,708.58	*
1655	Decatur County Community Schools	\$ 255,961.48	-
1835	DeKalb County Central United School District	\$ 1,644,980.32	*
1805	DeKalb County Eastern Community School District	\$ 182,387.88	-
1875	Delaware Community School Corporation	\$ 206,986.80	-
0755	Delphi Community School Corporation	\$ 170,913.24	-
6470	Duneland School Corporation	\$ 1,235,747.90	*
0255	East Allen County Schools	\$ 11,885,559.13	\$ 76,706.95
2725	East Gibson School Corporation	\$ 105,117.73	-
6060	East Noble School Corporation	\$ 1,524,133.70	*
6510	East Porter County School Corporation	\$ 463,880.36	-
8215	East Washington School Corporation	\$ 68,506.35	-
2815	Eastbrook Community School Corporation	\$ 265,389.80	*
2940	Eastern Greene Schools	\$ 173,284.16	-
3145	Eastern Hancock County Community School Corporation	\$ 92,493.72	-
3480	Eastern Howard School Corporation	\$ 70,059.44	*
6620	Eastern Pulaski Community School Corporation	*	*
4215	Edinburgh Community School Corporation	\$ 129,223.59	*
2305	Elkhart Community Schools	\$ 4,908,206.70	*
5280	Elwood Community School Corporation	\$ 100,034.67	-
5910	Eminence Community School Corporation	\$ 76,508.64	*
7995	Evansville Vanderburgh School Corporation	\$20,890,794.24	\$125,880.23



Appendix D: Award Amounts by School Corporation of Legal Settlement of Choice Students

Corp. No.	Corporation Name	2023-2024	
		Period One	Period Two
2155	Fairfield Community Schools	\$ 360,904.75	*
2395	Fayette County School Corporation	\$ 795,142.32	*
0370	Flat Rock-Hawcreek School Corporation	\$ 157,985.36	-
0235	Fort Wayne Community Schools	\$ 39,848,520.76	\$300,326.36
4225	Franklin Community School Corporation	\$ 1,147,322.77	*
2475	Franklin County Community School Corporation	\$ 921,433.89	*
5310	Franklin Township Community School Corporation	\$ 8,027,588.44	\$ 69,687.20
5245	Frankton-Lapel Community Schools	\$ 322,340.90	*
7605	Fremont Community Schools	*	-
8525	Frontier School Corporation	\$ 112,408.75	-
1820	Garrett-Keyser-Butler Community	\$ 531,748.98	-
4690	Gary Community School Corporation	\$ 4,878,128.41	\$ 70,890.56
2315	Goshen Community Schools	\$ 2,501,200.01	*
1010	Greater Clark County Schools	\$ 4,608,866.30	\$ 42,170.70
2120	Greater Jasper Consolidated Schools	\$ 1,065,621.96	*
6755	Greencastle Community School Corporation	-	-
3125	Greenfield-Central Community Schools	\$ 1,031,122.40	*
1730	Greensburg Community Schools	\$ 182,735.36	*
4245	Greenwood Community School Corporation	\$ 1,311,438.99	*
4700	Griffith Public Schools	\$ 1,043,912.62	*
7610	Hamilton Community Schools	*	-
3025	Hamilton Heights School Corporation	\$ 358,010.12	*
3005	Hamilton Southeastern Schools	\$ 7,339,346.67	\$ 69,849.00
4580	Hanover Community School Corporation	\$ 2,367,894.12	*
3625	Huntington County Community School Corporation	\$ 1,533,643.90	*
5385	Indianapolis Public Schools	\$ 33,594,787.06	\$ 412,847.53
6900	Jac-Cen-Del Community School Corporation	\$ 78,475.23	-
3945	Jay School Corporation	\$ 895,270.86	\$ 34,662.40
4015	Jennings County Schools	\$ 2,121,188.48	*
7150	John Glenn School Corporation	\$ 377,450.82	*
3785	Kankakee Valley School Corporation	\$ 2,123,290.13	*
7525	Knox Community School Corporation	\$ 245,474.26	-
3500	Kokomo-Center Township Consolidated School Corporation	\$ 1,466,832.56	*
7855	Lafayette School Corporation	\$ 4,495,254.56	*



Appendix D: Award Amounts by School Corporation of Legal Settlement of Choice Students

Corp. No.	Corporation Name	2023-2024	
		Period One	Period Two
4615	Lake Central School Corporation	\$ 5,214,822.32	*
4650	Lake Ridge Schools	\$ 919,451.89	-
4680	Lake Station Community Schools	\$ 684,051.72	*
4535	Lakeland School Corporation	\$ 60,746.21	-
3160	Lanesville Community School Corporation	\$ 232,696.64	*
4945	LaPorte Community School Corporation	\$ 1,186,916.75	*
1620	Lawrenceburg Community School Corporation	\$ 396,020.39	*
0665	Lebanon Community School Corporation	\$ 763,521.20	*
1895	Liberty-Perry Community School Corporation	*	-
2950	Linton-Stockton School Corporation	-	-
0875	Logansport Community School Corporation	*	-
5525	Loogootee Community School Corporation	*	-
8445	M S D Bluffton-Harrison	*	\$ 26,760.40
6460	M S D Boone Township	\$ 120,676.86	-
5300	M S D Decatur Township	\$ 1,916,776.44	\$ 53,046.08
5330	M S D Lawrence Township	\$ 9,563,426.07	\$ 86,254.56
5925	M S D Martinsville Schools	\$ 2,261,255.26	*
6590	M S D Mount Vernon	\$ 1,395,387.07	*
6600	M S D North Posey County Schools	\$ 1,074,281.76	-
4860	M S D of New Durham Township	\$ 104,338.58	-
5340	M S D Perry Township	\$ 13,918,458.80	\$ 105,315.83
5350	M S D Pike Township	\$ 7,011,746.90	\$ 133,819.24
2960	M S D Shakamak Schools	-	-
0125	M S D Southwest Allen County	\$ 4,818,437.08	\$ 76,249.12
7615	M S D Steuben County	\$ 102,754.56	*
8050	M S D Wabash County Schools	\$ 245,151.90	*
8115	M S D Warren County	*	-
5360	M S D Warren Township	\$ 7,099,347.71	\$ 43,783.02
5370	M S D Washington Township	\$ 7,603,181.13	\$ 84,263.66
5375	M S D Wayne Township	\$ 5,017,761.82	\$ 79,544.95
5615	Maconaquah School Corporation	*	-
3995	Madison Consolidated Schools	\$ 2,286,923.70	*
2825	Madison-Grant United School Corporation	\$ 209,709.47	-



Appendix D: Award Amounts by School Corporation of Legal Settlement of Choice Students

Corp. No.	Corporation Name	2023-2024	
		Period One	Period Two
8045	Manchester Community Schools	\$ 199,731.60	*
2865	Marion Community Schools	\$ 2,192,083.56	\$ 51,400.00
3640	Medora Community School Corporation	*	-
4600	Merrillville Community School	\$ 3,780,472.84	*
4925	Michigan City Area Schools	\$ 3,291,887.61	*
2275	Middlebury Community Schools	\$ 734,055.89	*
6910	Milan Community Schools	\$ 272,415.40	-
3335	Mill Creek Community School Corporation	\$ 92,066.16	-
2855	Mississinewa Community School Corporation	\$ 138,513.40	-
5085	Mitchell Community Schools	\$ 59,086.48	-
6820	Monroe Central School Corporation	*	-
5740	Monroe County Community School Corporation	\$ 2,944,164.62	\$ 29,566.85
5900	Monroe-Gregg School District	\$ 503,866.81	*
5930	Mooresville Consolidated School Corporation	\$ 2,088,792.07	*
3135	Mount Vernon Community School Corporation	\$ 1,700,139.02	*
1970	Muncie Community Schools	\$ 1,246,308.50	*
8305	Nettle Creek School Corporation	*	-
2400	New Albany-Floyd County Consolidated School Corporation	\$ 6,074,633.72	\$ 53,471.01
3445	New Castle Community School Corporation	\$ 71,180.30	*
4805	New Prairie United School Corporation	\$ 251,088.10	*
4255	Nineveh-Hensley-Jackson United Corporation	\$ 239,979.10	-
3070	Noblesville Schools	\$ 3,350,463.05	*
0025	North Adams Community Schools	\$ 1,570,746.68	*
6375	North Central Parke Community School Corporation	*	-
1375	North Daviess Community Schools	*	-
2735	North Gibson School Corporation	\$ 403,304.02	*
3180	North Harrison Community School Corporation	\$ 266,889.58	*
7515	North Judson-San Pierre School Corporation	\$ 604,721.09	-
4315	North Knox School Corporation	\$ 140,885.47	-
5075	North Lawrence Community Schools	\$ 1,324,576.78	*
5620	North Miami Community Schools	-	-
5835	North Montgomery Community School Corporation	*	-
5945	North Newton School Corporation	\$ 283,683.76	-
6715	North Putnam Community Schools	*	-
7385	North Spencer County School Corporation	\$ 132,829.62	*



Appendix D: Award Amounts by School Corporation of Legal Settlement of Choice Students

Corp. No.	Corporation Name	2023-2024	
		Period One	Period Two
8010	North Vermillion Community School Corporation	*	-
3295	North West Hendricks Schools	\$ 581,889.04	*
8515	North White School Corporation	*	-
2040	Northeast Dubois County School Corporation	\$ 85,805.52	-
7645	Northeast School Corporation	-	-
8375	Northeastern Wayne Schools	\$ 104,990.72	*
8435	Northern Wells Community Schools	\$ 184,545.08	\$ 22,597.50
0225	Northwest Allen County Schools	\$ 4,648,751.25	\$ 45,855.00
7350	Northwestern Consolidated School Corporation	\$ 202,716.40	*
3470	Northwestern School Corporation	\$ 165,091.70	-
5625	Oak Hill United School Corporation	\$ 151,696.96	*
7495	Oregon-Davis School Corporation	*	-
6145	Orleans Community Schools	*	-
6155	Paoli Community School Corporation	*	-
7175	Penn-Harris-Madison School Corporation	\$ 5,664,002.50	\$ 34,172.93
6325	Perry Central Community Schools Corporation	*	-
5635	Peru Community Schools	*	*
6445	Pike County School Corporation	\$ 66,936.34	-
0775	Pioneer Regional School Corporation	-	-
3330	Plainfield Community School Corporation	\$ 1,059,482.68	*
5485	Plymouth Community School Corporation	\$ 1,335,466.37	*
6550	Portage Township Schools	\$ 2,081,450.62	*
6520	Porter Township School Corporation	\$ 427,303.58	*
4515	Prairie Heights Community School Corporation	*	-
6825	Randolph Central School Corporation	*	-
6835	Randolph Eastern School Corporation	*	-
6805	Randolph Southern School Corporation	*	-
3815	Rensselaer Central School Corporation	\$ 320,124.10	-
5705	Richland-Bean Blossom Community School Corporation	\$ 514,338.16	-
8385	Richmond Community Schools	\$ 1,932,565.92	*
6080	Rising Sun-Ohio County Community School Corporation	\$ 97,050.05	-
4590	River Forest Community School Corporation	\$ 291,097.78	-
2645	Rochester Community School Corporation	-	-
6300	Rockville Community School Corporation	-	-
1180	Rossville Consolidated School District	\$ 236,005.64	-



Appendix D: Award Amounts by School Corporation of Legal Settlement of Choice Students

Corp. No.	Corporation Name	2023-2024	
		Period One	Period Two
6995	Rush County Schools	\$ 466,694.70	*
8205	Salem Community Schools	\$ 64,377.20	*
4670	School City of East Chicago	\$ 2,784,505.67	\$ 51,650.68
4710	School City of Hammond	\$ 9,284,222.14	\$ 56,801.42
4730	School City of Hobart	\$ 836,124.84	*
7200	School City of Mishawaka	\$ 2,589,998.97	*
4760	School City of Whiting	\$ 258,440.92	-
4720	School Town of Highland	\$ 1,832,071.98	*
4740	School Town of Munster	\$ 1,052,673.32	*
5400	School Town of Speedway	\$ 399,241.45	*
7230	Scott County School District I	\$ 116,169.00	*
7255	Scott County School District II	\$ 551,927.57	*
3675	Seymour Community Schools	\$ 3,579,434.08	*
7285	Shelby Eastern Schools	\$ 127,111.96	*
7365	Shelbyville Central Schools	\$ 414,589.06	*
3435	Shenandoah School Corporation	\$ 89,138.98	-
3055	Sheridan Community Schools	\$ 145,368.28	-
5520	Shoals Community School Corporation	-	-
0945	Silver Creek School Corporation	\$ 1,682,794.74	*
8625	Smith-Green Community Schools	\$ 293,593.63	*
0035	South Adams Schools	*	-
7205	South Bend Community School Corporation	\$ 31,171,796.71	\$ 198,170.05
4940	South Central Community School Corporation	\$ 93,854.25	-
1600	South Dearborn Community School Corporation	\$ 787,432.75	*
2765	South Gibson School Corporation	\$ 783,895.36	*
3190	South Harrison Community Schools	\$ 693,700.00	*
3415	South Henry School Corporation	-	-
4325	South Knox School Corporation	\$ 203,420.40	-
5255	South Madison Community School Corporation	\$ 537,676.62	*
5845	South Montgomery Community School Corporation	*	*
5995	South Newton School Corporation	*	*
6705	South Putnam Community Schools	*	-
6865	South Ripley Community School Corporation	\$ 137,203.01	-
7445	South Spencer County School Corporation	\$ 529,005.00	*



Appendix D: Award Amounts by School Corporation of Legal Settlement of Choice Students

Corp. No.	Corporation Name	2023-2024	
		Period One	Period Two
8020	South Vermillion Community School Corporation	\$ 162,406.00	*
2100	Southeast Dubois County School Corporation	*	-
2455	Southeast Fountain School Corporation	\$ 77,470.00	-
0815	Southeastern School Corporation	*	-
3115	Southern Hancock County Community School Corporation	\$ 1,174,560.78	*
8425	Southern Wells Community Schools	*	*
2110	Southwest Dubois County School Corporation	\$ 84,616.41	-
6260	Southwest Parke Community School Corporation	*	-
7715	Southwest School Corporation	*	-
7360	Southwestern Consolidated School District Shelby County	\$ 108,759.55	-
4000	Southwestern-Jefferson County Consolidated Schools	\$ 537,032.00	*
6195	Spencer-Owen Community Schools	\$ 323,989.18	-
6160	Springs Valley Community School Corporation	*	-
1560	Sunman-Dearborn Community School Corporation	\$ 960,882.24	*
7775	Switzerland County School Corporation	*	-
3460	Taylor Community School Corporation	\$ 232,291.76	*
6350	Tell City-Troy Township School Corporation	-	-
7865	Tippecanoe School Corporation	\$ 6,370,216.70	*
4445	Tippecanoe Valley School Corporation	\$ 172,667.14	-
7945	Tipton Community School Corporation	\$ 127,734.14	*
4915	Tri Township Consolidated School Corporation	*	-
7935	Tri-Central Community Schools	\$ 48,640.84	-
8535	Tri-County School Corporation	*	-
4645	Tri-Creek School Corporation	\$ 1,444,926.56	*
5495	Triton School Corporation	*	-
6310	Turkey Run Community School Corporation	-	-
8565	Twin Lakes School Corporation	\$ 108,877.52	-
7950	Union County/College Corner Joint School District	\$ 87,957.98	-
6795	Union School Corporation	*	-
6530	Union Township School Corporation	\$ 378,275.84	*
7215	Union-North United School Corporation	\$ 444,276.58	*
6560	Valparaiso Community Schools	\$ 1,937,419.68	\$ 29,841.00
8030	Vigo County School Corporation	\$ 1,220,277.12	*
4335	Vincennes Community School Corporation	\$ 817,587.84	*
8060	Wabash City Schools	\$ 132,657.12	-



Appendix D: Award Amounts by School Corporation of Legal Settlement of Choice Students

Corp. No.	Corporation Name	2023-2024	
		Period One	Period Two
2285	Wa-Nee Community Schools	\$ 353,624.31	-
8130	Warrick County School Corporation	\$ 4,214,227.79	\$ 36,155.45
4415	Warsaw Community Schools	\$ 2,132,108.78	*
1405	Washington Community Schools	\$ 1,383,170.94	*
4345	Wawasee Community School Corporation	\$ 273,866.60	*
1885	Wes-Del Community Schools	\$ 144,862.28	-
6630	West Central School Corporation	\$ 63,677.91	-
0940	West Clark Community Schools	-	-
7875	West Lafayette Community School Corporation	\$ 259,685.50	-
6065	West Noble School Corporation	\$ 133,755.31	-
8220	West Washington School Corporation	*	-
0615	Western Boone County Community School District	\$ 128,542.98	-
3490	Western School Corporation	\$ 348,540.60	*
8355	Western Wayne Schools	\$ 90,603.00	-
3030	Westfield-Washington Schools	\$ 1,490,565.01	\$ 30,656.30
4525	Westview School Corporation	\$ 116,942.91	-
2980	White River Valley School District	-	-
4455	Whitko Community School Corporation	\$ 283,528.42	*
8665	Whitley County Consolidated Schools	\$ 635,591.98	*
1910	Yorktown Community Schools	\$ 313,107.25	*
0630	Zionsville Community Schools	\$ 865,153.90	*

- Public school corporations with no Choice students have been marked with a hyphen.

- For data For Choice schools that show no data in the table above, please refer to previous versions of the Annual Choice Report.

* Counts less than 10 have been asterisked to comply with FERPA



APPENDIX E: SCHOOL CORPORATION BASED ON CHOICE SCHOOL LOCATION

Appendix E: School Corporation Based on Choice School Location

Corp. No.	Corporation Name	School No.	School Name
5265	Alexandria Community School Corporation	C190	Saint Mary School
5275	Anderson Community School Corporation	C250	Anderson Christian School
5275	Anderson Community School Corporation	C211	Holy Cross School
5275	Anderson Community School Corporation	C226	Liberty Christian Elementary
5275	Anderson Community School Corporation	C225	Liberty Christian School
3315	Avon Community School Corporation	B295	Kingsway Christian School
3315	Avon Community School Corporation	C512	Our Shepherd Lutheran School
0365	Bartholomew Consolidated School Corporation	A450	Columbus Christian School Inc.
0365	Bartholomew Consolidated School Corporation	A303	FaithPrep Academy
0365	Bartholomew Consolidated School Corporation	A317	Liberty Academy of Columbus
0365	Bartholomew Consolidated School Corporation	A102	Maple Creek Adventist Academy
0365	Bartholomew Consolidated School Corporation	A425	Saint Bartholomew School
0365	Bartholomew Consolidated School Corporation	A423	Saint Paul Lutheran Preschool
0365	Bartholomew Consolidated School Corporation	A435	Saint Peter Lutheran School
0365	Bartholomew Consolidated School Corporation	A430	White Creek Lutheran School
6895	Batesville Community School Corporation	D135	Oldenburg Academy
6895	Batesville Community School Corporation	D130	Saint Louis School
5380	Beech Grove City Schools	C545	Holy Name School
0395	Benton Community School Corporation	A470	Sacred Heart School
5480	Bremen Public Schools	C825	Saint Paul's Lutheran School
3305	Brownsburg Community School Corporation	B290	Bethesda Christian School
3305	Brownsburg Community School Corporation	B285	Saint Malachy School
3695	Brownstown Central Community School Corporation	B465	Lutheran Central School
3060	Carmel Clay Schools	A148	INspire Academy
3060	Carmel Clay Schools	B241	University High School of Indiana
4205	Center Grove Community School Corporation	C954	Greenwood Christian Academy High School
4205	Center Grove Community School Corporation	B540	Saints Francis and Clare Catholic School
4145	Clark-Pleasant Community School Corporation	C966	Greenwood Christian Academy
4145	Clark-Pleasant Community School Corporation	B549	Greenwood Christian School
1000	Clarksville Community School Corporation	A560	Saint Anthony School
2270	Concord Community Schools	B009	Crossing Educational Center
2270	Concord Community Schools	A990	Elkhart Christian Academy
2270	Concord Community Schools	B131	Genai Excellence Academy



Appendix E: School Corporation Based on Choice School Location

Corp. No.	Corporation Name	School No.	School Name
2440	Covington Community School Corporation	B085	Covington Christian School
4660	Crown Point Community School Corporation	B773	Northwest Adventist Christian School
4660	Crown Point Community School Corporation	B835	Saint Mary Catholic Community School
4660	Crown Point Community School Corporation	B850	Trinity Lutheran School
1835	DeKalb County Central United School District	A740	Lakewood Park Christian School
6470	Duneland School Corporation	D050	Saint Patrick School
0255	East Allen County Schools	A370	Central Lutheran School
0255	East Allen County Schools	A355	Saint John the Baptist Catholic School
0255	East Allen County Schools	A365	Saint John-Emmanuel Lutheran School
0255	East Allen County Schools	A340	Saint Joseph Catholic School
0255	East Allen County Schools	A350	Saint Joseph Hessen Cassel Catholic School
0255	East Allen County Schools	A360	Saint Louis Besancon Catholic School
0255	East Allen County Schools	A375	Woodburn Lutheran School
6060	East Noble School Corporation	A308	Islamic Academy of Kendallville
6060	East Noble School Corporation	C985	Saint John Lutheran School
6060	East Noble School Corporation	C980	Saint Mary Elementary School
6510	East Porter County School Corporation	D073	Victory Christian Academy
4215	Edinburgh Community School Corporation	A126	Edinburgh Christian School
2305	Elkhart Community Schools	A975	Saint Thomas the Apostle School
2305	Elkhart Community Schools	A980	Saint Vincent DePaul School
2305	Elkhart Community Schools	A985	Trinity Lutheran School
7995	Evansville Vanderburgh School Corporation	D545	Christ the King School
7995	Evansville Vanderburgh School Corporation	D550	Corpus Christi School
7995	Evansville Vanderburgh School Corporation	D485	Evansville Christian School
7995	Evansville Vanderburgh School Corporation	D525	Evansville Day School
7995	Evansville Vanderburgh School Corporation	D625	Evansville Lutheran School
7995	Evansville Vanderburgh School Corporation	D555	Good Shepherd School
7995	Evansville Vanderburgh School Corporation	D560	Holy Redeemer School
7995	Evansville Vanderburgh School Corporation	D565	Holy Rosary School
7995	Evansville Vanderburgh School Corporation	D570	Holy Spirit School
7995	Evansville Vanderburgh School Corporation	D530	Mater Dei High School
7995	Evansville Vanderburgh School Corporation	D535	Reitz Memorial High School
7995	Evansville Vanderburgh School Corporation	D610	Resurrection School
7995	Evansville Vanderburgh School Corporation	A121	Riverview Adventist Christian Academy
7995	Evansville Vanderburgh School Corporation	D590	Saint Benedict Cathedral School



Appendix E: School Corporation Based on Choice School Location

Corp. No.	Corporation Name	School No.	School Name
7995	Evansville Vanderburgh School Corporation	D605	Saint Joseph School
7995	Evansville Vanderburgh School Corporation	D580	Westside Catholic School
2155	Fairfield Community Schools	A875	Clinton Christian School
2395	Fayette County School Corporation	B035	Saint Gabriel Parochial School
0235	Fort Wayne Community Schools	D918	Alyssum Montessori School
0235	Fort Wayne Community Schools	A248	Ascension Lutheran School
0235	Fort Wayne Community Schools	A120	Bishop Dwenger High School
0235	Fort Wayne Community Schools	A125	Bishop Luers High School
0235	Fort Wayne Community Schools	A172	Blackhawk Christian Elementary School
0235	Fort Wayne Community Schools	A170	Blackhawk Christian Jr/Sr High School
0235	Fort Wayne Community Schools	A249	Central Christian School
0235	Fort Wayne Community Schools	A205	Concordia Evangelical Lutheran School
0235	Fort Wayne Community Schools	A195	Concordia Lutheran High School
0235	Fort Wayne Community Schools	A236	Cornerstone College Preparatory School
0235	Fort Wayne Community Schools	A275	Crossroad Academy
0235	Fort Wayne Community Schools	A293	Darul Uloom Al Ansaar
0235	Fort Wayne Community Schools	A215	Emmanuel Saint Michael Lutheran School
0235	Fort Wayne Community Schools	A225	Holy Cross Lutheran School
0235	Fort Wayne Community Schools	D914	International Leadership School
0235	Fort Wayne Community Schools	A235	Lutheran South Unity School
0235	Fort Wayne Community Schools	A130	Most Precious Blood School
0235	Fort Wayne Community Schools	A106	Our Lady School
0235	Fort Wayne Community Schools	A135	Queen of Angels School
0235	Fort Wayne Community Schools	A270	Saint Aloysius Catholic School
0235	Fort Wayne Community Schools	A145	Saint Charles Borromeo School
0235	Fort Wayne Community Schools	A150	Saint John the Baptist School
0235	Fort Wayne Community Schools	A155	Saint Joseph-Saint Elizabeth Campus I
0235	Fort Wayne Community Schools	A160	Saint Jude Elementary School
0235	Fort Wayne Community Schools	A245	Saint Paul Lutheran School
0235	Fort Wayne Community Schools	A250	Saint Peter's Lutheran School
0235	Fort Wayne Community Schools	A175	Saint Therese School
0235	Fort Wayne Community Schools	A180	Saint Vincent DePaul School
0235	Fort Wayne Community Schools	A200	Suburban Bethlehem Lutheran School
4225	Franklin Community School Corporation	B518	Saint Rose of Lima School
2475	Franklin County Community School Corporation	B095	Saint Michael School



Appendix E: School Corporation Based on Choice School Location

Corp. No.	Corporation Name	School No.	School Name
5310	Franklin Township Community School Corporation	C270	Lutheran High School
5310	Franklin Township Community School Corporation	C265	Nativity School
5245	Frankton-Lapel Community Schools	C215	Cross Street Christian School
5245	Frankton-Lapel Community Schools	C175	Indiana Christian Academy
1820	Garrett-Keyser-Butler Community	A735	Saint Joseph School
4690	Gary Community School Corporation	B806	Ambassador Christian Academy
4690	Gary Community School Corporation	B892	Ascension Lutheran Christian School
4690	Gary Community School Corporation	B129	Life Christian STEAM Academy
2315	Goshen Community Schools	B015	Bethany Christian School
2315	Goshen Community Schools	B020	Saint John Evangelist School
1010	Greater Clark County Schools	A575	Our Lady of Providence High School
1010	Greater Clark County Schools	A570	Sacred Heart School
2120	Greater Jasper Consolidated Schools	A871	Holy Trinity Catholic School
3125	Greenfield-Central Community Schools	B265	Saint Michael School
1730	Greensburg Community Schools	A724	Good Shepherd Christian Academy
1730	Greensburg Community Schools	A730	Saint Mary School
4245	Greenwood Community School Corporation	B535	Our Lady of the Greenwood School
4700	Griffith Public Schools	B815	Calumet Christian School
4700	Griffith Public Schools	B930	Saint Mary School
3025	Hamilton Heights School Corporation	B195	Cicero Adventist School
3025	Hamilton Heights School Corporation	B190	Indiana Academy
3005	Hamilton Southeastern Schools	B160	Eman Schools
3005	Hamilton Southeastern Schools	B161	Fishers Christian Academy
3005	Hamilton Southeastern Schools	B227	Saint Louis de Montfort Catholic School
4580	Hanover Community School Corporation	B771	Crown Point Christian School
4580	Hanover Community School Corporation	A122	Illiana Christian High School
3625	Huntington County Community School Corporation	B418	Huntington Catholic School
5385	Indianapolis Public Schools	A149	Apogee School for the Gifted
5385	Indianapolis Public Schools	C575	Baptist Academy
5385	Indianapolis Public Schools	C705	Bishop Chatard High School
5385	Indianapolis Public Schools	C690	Capitol City SDA Church School
5385	Indianapolis Public Schools	C715	Cardinal Ritter High School
5385	Indianapolis Public Schools	C700	Cathedral High School
5385	Indianapolis Public Schools	C625	Central Catholic School
5385	Indianapolis Public Schools	C585	Christ the King School



Appendix E: School Corporation Based on Choice School Location

Corp. No.	Corporation Name	School No.	School Name
5385	Indianapolis Public Schools	C680	Emmaus Lutheran School
5385	Indianapolis Public Schools	A304	GEO Focus Academy
5385	Indianapolis Public Schools	A004	Hagia Sophia Classical Academy
5385	Indianapolis Public Schools	A306	Harriet Tubman School of Excellence
5385	Indianapolis Public Schools	C590	Holy Angels Catholic School
5385	Indianapolis Public Schools	C563	Horizon Christian School-Shepherd Campus
5385	Indianapolis Public Schools	C600	Immaculate Heart of Mary School
5385	Indianapolis Public Schools	B299	Legacy Learning Center
5385	Indianapolis Public Schools	A208	Marian University Preparatory School
5385	Indianapolis Public Schools	C628	MTI School of Knowledge
5385	Indianapolis Public Schools	C605	Our Lady of Lourdes School
5385	Indianapolis Public Schools	C623	Providence Cristo Rey High School
5385	Indianapolis Public Schools	C615	Saint Anthony Catholic School
5385	Indianapolis Public Schools	C645	Saint Joan of Arc School
5385	Indianapolis Public Schools	C650	Saint Michael the Archangel School
5385	Indianapolis Public Schools	C655	Saint Philip Neri School
5385	Indianapolis Public Schools	C670	Saint Therese Little Flower School
5385	Indianapolis Public Schools	C675	Saint Thomas Aquinas School
5385	Indianapolis Public Schools	C710	Scecina Memorial School
5385	Indianapolis Public Schools	C791	School for Community Learning
5385	Indianapolis Public Schools	A152	Stepping Stones Education Academy
5385	Indianapolis Public Schools	C773	The Oaks Academy
5385	Indianapolis Public Schools	B297	The Oaks Academy - Brookside
5385	Indianapolis Public Schools	C774	The Oaks Academy - Middle School
5385	Indianapolis Public Schools	C561	Trinity Christian School
3945	Jay School Corporation	B483	Jay County Christian Academy
4015	Jennings County Schools	B515	Saint Mary School
7150	John Glenn School Corporation	D158	North Liberty Christian School
3785	Kankakee Valley School Corporation	B469	Covenant Christian High School
3785	Kankakee Valley School Corporation	B470	DeMotte Christian School
3500	Kokomo-Center Township Consolidated School Corporation	B367	Redeemer Lutheran School
7855	Lafayette School Corporation	D415	Central Catholic Jr/Sr High School
7855	Lafayette School Corporation	D440	Lafayette Christian School
7855	Lafayette School Corporation	D420	Saint Boniface School
7855	Lafayette School Corporation	D435	Saint James Lutheran School



Appendix E: School Corporation Based on Choice School Location

Corp. No.	Corporation Name	School No.	School Name
7855	Lafayette School Corporation	D425	Saint Lawrence Elementary School
7855	Lafayette School Corporation	D430	Saint Mary Cathedral School
4615	Lake Central School Corporation	B780	Saint John Evangelist School
4615	Lake Central School Corporation	B775	Saint Michael School
4650	Lake Ridge Schools	D913	Israel School of Excellence
4650	Lake Ridge Schools	D915	Israel School of Excellence Prep
3160	Lanesville Community School Corporation	B275	Saint John Lutheran School
4945	LaPorte Community School Corporation	C112	Door Prairie Adventist School
4945	LaPorte Community School Corporation	C150	Saint John Lutheran School
1620	Lawrenceburg Community School Corporation	A700	Saint Lawrence School
0665	Lebanon Community School Corporation	C375	Traders Point Christian Academy
8445	M S D Bluffton-Harrison	D875	Kingdom Academy of Bluffton
5330	M S D Lawrence Township	C281	Cornerstone Baptist Academy
5330	M S D Lawrence Township	C275	Heritage Christian School
5330	M S D Lawrence Township	C267	Holy Cross Lutheran School
5330	M S D Lawrence Township	C282	Horizon Christian School
5330	M S D Lawrence Township	C280	Saint Lawrence School
5330	M S D Lawrence Township	C665	Saint Simon the Apostle School
5330	M S D Lawrence Township	C699	TP Schools
5925	M S D Martinsville Schools	C940	Tabernacle Christian Schools
6590	M S D Mount Vernon	D095	Saint Matthew School
6590	M S D Mount Vernon	D100	Saint Philip School
6600	M S D North Posey County Schools	D105	Saint Wendel School
5340	M S D Perry Township	C580	Calvary Christian School
5340	M S D Perry Township	C315	Calvary Lutheran School
5340	M S D Perry Township	C679	Indianapolis Southside Christian School
5340	M S D Perry Township	C320	Roncalli High School
5340	M S D Perry Township	C295	Saint Barnabas School
5340	M S D Perry Township	C300	Saint Jude Elementary School
5340	M S D Perry Township	C305	Saint Mark School
5340	M S D Perry Township	C310	Saint Roch School
5340	M S D Perry Township	C325	Suburban Christian School
5350	M S D Pike Township	D912	Al-Haqq Foundation Academy
5350	M S D Pike Township	C360	Brebeuf Jesuit Preparatory School
5350	M S D Pike Township	C589	The Independence Academy



Appendix E: School Corporation Based on Choice School Location

Corp. No.	Corporation Name	School No.	School Name
0125	M S D Southwest Allen County	A260	Aboite Christian School
0125	M S D Southwest Allen County	A142	Emmanuel Christian School of Fort Wayne
0125	M S D Southwest Allen County	A220	Emmaus Lutheran School
0125	M S D Southwest Allen County	A104	Saint Joseph-Saint Elizabeth Campus II
5360	M S D Warren Township	C396	Burge Terrace Christian School
5360	M S D Warren Township	C390	Holy Spirit School
5360	M S D Warren Township	C400	Saint John Evangelical Lutheran School
5360	M S D Warren Township	C395	Trinity Lutheran School
5370	M S D Washington Township	C495	Colonial Christian School
5370	M S D Washington Township	C475	Hasten Hebrew Academy of Indianapolis
5370	M S D Washington Township	C455	Indianapolis Junior Academy
5370	M S D Washington Township	C678	International School of Indiana (6-8)
5370	M S D Washington Township	C677	International School of Indiana (9-12)
5370	M S D Washington Township	C435	Saint Luke School
5370	M S D Washington Township	C440	Saint Matthew School
5370	M S D Washington Township	C445	Saint Monica School
5370	M S D Washington Township	C450	Saint Pius X School
5370	M S D Washington Township	A127	The CTM Academy
5375	M S D Wayne Township	C519	Chapel Hill Christian School
5375	M S D Wayne Township	C527	Covenant Christian High School
5375	M S D Wayne Township	C514	Crosspointe Christian Academy
5375	M S D Wayne Township	B251	Indy West Christian School
5375	M S D Wayne Township	C513	Islamic Academy of Indianapolis
3995	Madison Consolidated Schools	B493	Christian Academy of Madison
3995	Madison Consolidated Schools	B510	Pope John XXIII School
3995	Madison Consolidated Schools	B505	Shawe Memorial High School
2865	Marion Community Schools	B145	Lakeview Christian School
2865	Marion Community Schools	B155	Saint Paul Parish School
4600	Merrillville Community School	B760	Andrean High School
4600	Merrillville Community School	B755	Aquinas School at Saint Andrew's
4600	Merrillville Community School	B821	Indiana Horizon Academy
4925	Michigan City Area Schools	C125	Marquette Catholic High School
4925	Michigan City Area Schools	C105	Notre Dame Elementary School
4925	Michigan City Area Schools	C110	Queen of All Saints School
4925	Michigan City Area Schools	C120	Saint Stanislaus Kostka School



Appendix E: School Corporation Based on Choice School Location

Corp. No.	Corporation Name	School No.	School Name
2855	Mississinewa Community School Corporation	B136	The King's Academy
5740	Monroe County Community School Corporation	C905	Adventist Christian Elementary
5740	Monroe County Community School Corporation	C933	Clear Creek Christian School
5740	Monroe County Community School Corporation	C910	Covenant Christian School
5740	Monroe County Community School Corporation	C927	Lighthouse Christian Academy
5740	Monroe County Community School Corporation	C900	Saint Charles Borromeo School
5930	Mooresville Consolidated School Corporation	C965	Mooresville Christian Academy
1970	Muncie Community Schools	A795	Saint Mary School
2400	New Albany-Floyd County Consolidated School Corporation	B045	Christian Academy of Indiana
2400	New Albany-Floyd County Consolidated School Corporation	B050	Holy Family School
2400	New Albany-Floyd County Consolidated School Corporation	B060	Our Lady of Perpetual School
2400	New Albany-Floyd County Consolidated School Corporation	B067	Saint Mary of-the-Knobs Catholic School
3070	Noblesville Schools	B249	Guerin Catholic High School
3070	Noblesville Schools	B248	Legacy Christian School
3070	Noblesville Schools	B246	Our Lady of Grace School
3070	Noblesville Schools	A163	Premier Soccer Academy
0025	North Adams Community Schools	A035	Saint Joseph School
0025	North Adams Community Schools	A040	Saint Peter Immanuel Lutheran School
2735	North Gibson School Corporation	B105	Saint Joseph School
7515	North Judson-San Pierre School Corporation	D375	Saint Peter Lutheran School
5075	North Lawrence Community Schools	C160	Saint Vincent DePaul School
7175	Penn-Harris-Madison School Corporation	D189	Covenant Christian School
7175	Penn-Harris-Madison School Corporation	A115	International Soccer Academy of America
7175	Penn-Harris-Madison School Corporation	D165	Marian High School
7175	Penn-Harris-Madison School Corporation	D164	Saint Pius X Catholic School
3330	Plainfield Community School Corporation	B302	Islamic School of Plainfield
3330	Plainfield Community School Corporation	B300	Saint Susanna School
5485	Plymouth Community School Corporation	C850	Grace Baptist Christian School
5485	Plymouth Community School Corporation	C855	Saint Michael School
6550	Portage Township Schools	D063	Emmanuel Baptist Academy
6550	Portage Township Schools	D065	Nativity of Our Savior School
6550	Portage Township Schools	D080	Portage Christian School
3815	Rensselaer Central School Corporation	B475	Saint Augustine School
8385	Richmond Community Schools	D862	Community Christian School
8385	Richmond Community Schools	D845	Richmond Adventist Elementary School



Appendix E: School Corporation Based on Choice School Location

Corp. No.	Corporation Name	School No.	School Name
8385	Richmond Community Schools	D840	Saint Elizabeth Ann Seton School
8385	Richmond Community Schools	D842	Seton Catholic High School
6995	Rush County Schools	D140	Saint Mary Elementary School
4670	School City of East Chicago	B865	Saint Stanislaus School
4710	School City of Hammond	B970	Bishop Noll Institute
4710	School City of Hammond	B951	Morning Star Academy
4710	School City of Hammond	B950	Saint Casimir School
4710	School City of Hammond	B960	Saint John Bosco School
4710	School City of Hammond	B965	Saint John the Baptist School
4730	School City of Hobart	C050	Trinity Lutheran School
7200	School City of Mishawaka	D196	Bais Yaakov High School of Indiana
7200	School City of Mishawaka	D177	Mishawaka Catholic School
7200	School City of Mishawaka	D249	New Vision Christian Academy
7200	School City of Mishawaka	D198	Queen of Peace School
4720	School Town of Highland	C020	Highland Christian School
4720	School Town of Highland	C025	Our Lady of Grace School
4740	School Town of Munster	C065	Saint Paul's Lutheran School
4740	School Town of Munster	C060	Saint Thomas More School
5400	School Town of Speedway	C795	Saint Christopher School
7255	Scott County School District II	D329	Grace Christian Academy
3675	Seymour Community Schools	B445	Immanuel Lutheran School
3675	Seymour Community Schools	B440	Saint Ambrose School
3675	Seymour Community Schools	B450	Saint John Lutheran School
3675	Seymour Community Schools	B455	Seymour Christian Academy
3675	Seymour Community Schools	B452	Trinity Lutheran High School
3675	Seymour Community Schools	B459	Zion Lutheran School
7365	Shelbyville Central Schools	D335	Saint Joseph School
7205	South Bend Community School Corporation	D230	Christ the King School
7205	South Bend Community School Corporation	D305	Community Baptist Christian School
7205	South Bend Community School Corporation	D235	Corpus Christi School
7205	South Bend Community School Corporation	D310	Granger Christian School
7205	South Bend Community School Corporation	D240	Holy Cross School
7205	South Bend Community School Corporation	D245	Holy Family School
7205	South Bend Community School Corporation	D315	Michiana Christian School
7205	South Bend Community School Corporation	D250	Our Lady of Hungary School



Appendix E: School Corporation Based on Choice School Location

Corp. No.	Corporation Name	School No.	School Name
7205	South Bend Community School Corporation	D317	Resurrection Lutheran Academy
7205	South Bend Community School Corporation	A042	River Montessori High School
7205	South Bend Community School Corporation	D255	Saint Adalbert School
7205	South Bend Community School Corporation	D260	Saint Anthony De Padua School
7205	South Bend Community School Corporation	D265	Saint John the Baptist School
7205	South Bend Community School Corporation	D270	Saint Joseph School
7205	South Bend Community School Corporation	D225	Saint Joseph's High School
7205	South Bend Community School Corporation	D275	Saint Jude Catholic School
7205	South Bend Community School Corporation	D285	Saint Matthew Cathedral School
7205	South Bend Community School Corporation	A311	Saint Thomas More Academy
7205	South Bend Community School Corporation	D195	South Bend Hebrew Day School
7205	South Bend Community School Corporation	D300	South Bend Junior Academy School
7205	South Bend Community School Corporation	D217	Trinity School at Greenlawn
7205	South Bend Community School Corporation	D281	Yeshiva of South Bend
1600	South Dearborn Community School Corporation	A695	Saint John Evangelical Lutheran School
2765	South Gibson School Corporation	B115	Holy Cross School
2765	South Gibson School Corporation	B120	Saint James School
2765	South Gibson School Corporation	B125	Saints Peter & Paul School
3190	South Harrison Community Schools	B280	Saint Joseph School
7445	South Spencer County School Corporation	D370	Saint Bernard School
8020	South Vermillion Community School Corporation	A119	Dana Christian School
2455	Southeast Fountain School Corporation	A138	Hillsboro Christian Academy
3115	Southern Hancock County Community School Corporation	A324	Montessori Science Academy
3115	Southern Hancock County Community School Corporation	B260	Zion Lutheran School
1560	Sunman-Dearborn Community School Corporation	A680	Saint Nicholas School
7865	Tippecanoe School Corporation	D452	Faith Christian School
6560	Valparaiso Community Schools	D090	Immanuel Lutheran School
6560	Valparaiso Community Schools	D085	Saint Paul Catholic School
8030	Vigo County School Corporation	D720	Saint Patrick School
4335	Vincennes Community School Corporation	B565	Flaget Elementary School
4335	Vincennes Community School Corporation	B560	Rivet Middle & High School
8060	Wabash City Schools	D805	Saint Bernard Elementary School
8060	Wabash City Schools	B157	The Montessori School at WPC
8130	Warrick County School Corporation	D489	Evansville Christian School - Newburgh
8130	Warrick County School Corporation	D815	Saint John the Baptist School



Appendix E: School Corporation Based on Choice School Location

Corp. No.	Corporation Name	School No.	School Name
4415	Warsaw Community Schools	B595	Lakeland Christian Academy
4415	Warsaw Community Schools	B605	Sacred Heart School
1405	Washington Community Schools	A665	Washington Catholic Elementary School
1405	Washington Community Schools	A660	Washington Catholic Middle/High School
0940	West Clark Community Schools	A550	Saint Paul School
3490	Western School Corporation	B395	Saints Joan of Arc & Patrick School
3030	Westfield-Washington Schools	B205	Union Bible Academy
8665	Whitley County Consolidated Schools	D907	TROY Center
1910	Yorktown Community Schools	A746	Heritage Hall Christian School

- Crossing Educational Center, B009, has multiple campuses throughout Indiana but all are listed under a single school number which is tied to one public school corporation.



APPENDIX F: AWARD TYPES BY CHOICE STUDENT SCHOOL CORPORATION OF LEGAL SETTLEMENT

Appendix F: Award Types by Choice Student School Corporation of Legal Settlement					
Corp. No.	Corporation Name	2023-2024			
		90% Award		Tuition and Fees	
		Period One	Period Two	Period One	Period Two
0015	Adams Central Community Schools	*	-	-	18
5265	Alexandria Community School Corporation	*	-	92	*
5275	Anderson Community School Corporation	281	*	513	16
5470	Argos Community Schools	-	-	10	-
2435	Attica Consolidated School Corporation	*	-	*	-
3315	Avon Community School Corporation	605	-	182	13
1315	Barr-Reeve Community Schools	*	-	-	-
0365	Bartholomew Consolidated School Corporation	588	13	434	25
6895	Batesville Community School Corporation	37	-	184	-
2260	Baugo Community Schools	60	-	*	-
5380	Beech Grove City Schools	68	-	122	*
0395	Benton Community School Corporation	33	-	80	*
0515	Blackford County Schools	-	-	*	-
2920	Bloomfield School District	-	-	-	-
3405	Blue River Valley Schools	*	-	*	-
0935	Borden-Henryville School Corporation	81	-	68	-
5480	Bremen Public Schools	34	-	-	*
0670	Brown County School Corporation	34	-	14	*
3305	Brownsburg Community School Corporation	572	13	130	-
3695	Brownstown Central Community School Corporation	158	*	45	-
3455	C A Beard Memorial School Corporation	*	-	*	-
6340	Cannelton City Schools	-	-	-	-
3060	Carmel Clay Schools	373	-	70	*
0750	Carroll Consolidated School Corporation	11	-	-	-
2650	Caston School Corporation	-	-	-	-
4205	Center Grove Community School Corporation	296	-	330	27
8360	Centerville-Abington Community Schools	*	-	19	-
6055	Central Noble Community School Corporation	13	-	*	-



Appendix F: Award Types by Choice Student School Corporation of Legal Settlement

Corp. No.	Corporation Name	2023-2024			
		90% Award		Tuition and Fees	
		Period One	Period Two	Period One	Period Two
4145	Clark-Pleasant Community School Corporation	223	-	179	*
1000	Clarksville Community School Corporation	71	-	*	-
1125	Clay Community Schools	*	-	*	-
1150	Clinton Central School Corporation	*	*	-	-
1160	Clinton Prairie School Corporation	24	*	*	-
6750	Cloverdale Community Schools	*	-	-	-
1170	Community Schools of Frankfort	29	-	*	*
2270	Concord Community Schools	181	*	*	*
2440	Covington Community School Corporation	*	-	*	-
1900	Cowan Community School Corporation	*	-	*	-
1300	Crawford County Community School Corporation	*	-	10	-
5855	Crawfordsville Community Schools	-	-	*	*
3710	Crothersville Community Schools	15	-	14	-
4660	Crown Point Community School Corporation	447	-	134	14
5455	Culver Community Schools Corporation	*	-	19	*
1940	Daleville Community Schools	*	-	11	-
3325	Danville Community School Corporation	66	-	10	*
1655	Decatur County Community Schools	11	-	37	-
1835	DeKalb County Central United School District	246	-	15	*
1805	DeKalb County Eastern Community School District	22	-	*	-
1875	Delaware Community School Corporation	*	-	26	-
0755	Delphi Community School Corporation	27	-	-	-
6470	Duneland School Corporation	94	*	118	-
0255	East Allen County Schools	1,159	19	652	*
2725	East Gibson School Corporation	*	-	13	-
6060	East Noble School Corporation	94	-	157	*
6510	East Porter County School Corporation	69	-	*	-
8215	East Washington School Corporation	*	-	*	-
2815	Eastbrook Community School Corporation	30	*	13	-
2940	Eastern Greene Schools	19	-	*	-
3145	Eastern Hancock County Community School Corporation	12	-	*	-
3480	Eastern Howard School Corporation	11	*	-	-



Appendix F: Award Types by Choice Student School Corporation of Legal Settlement

Corp. No.	Corporation Name	2023-2024			
		90% Award		Tuition and Fees	
		Period One	Period Two	Period One	Period Two
6620	Eastern Pulaski Community School Corporation	*	-	-	*
4215	Edinburgh Community School Corporation	*	-	12	*
2305	Elkhart Community Schools	497	*	248	*
5280	Elwood Community School Corporation	*	-	*	-
5910	Eminence Community School Corporation	12	*	-	-
7995	Evansville Vanderburgh School Corporation	1,676	21	1,722	21
2155	Fairfield Community Schools	57	-	*	*
2395	Fayette County School Corporation	*	*	120	*
0370	Flat Rock-Hawcreek School Corporation	16	-	*	-
0235	Fort Wayne Community Schools	3,016	67	2,936	21
4225	Franklin Community School Corporation	111	*	77	*
2475	Franklin County Community School Corporation	17	-	171	*
5310	Franklin Township Community School Corporation	682	-	658	22
5245	Frankton-Lapel Community Schools	44	-	*	*
7605	Fremont Community Schools	*	-	-	-
8525	Frontier School Corporation	17	-	*	-
1820	Garrett-Keyser-Butler Community	75	-	*	-
4690	Gary Community School Corporation	191	-	471	19
2315	Goshen Community Schools	306	-	96	*
1010	Greater Clark County Schools	309	11	424	*
2120	Greater Jasper Consolidated Schools	23	-	211	*
6755	Greencastle Community School Corporation	-	-	-	-
3125	Greenfield-Central Community Schools	71	*	97	*
1730	Greensburg Community Schools	*	-	27	*
4245	Greenwood Community School Corporation	104	*	120	*
4700	Griffith Public Schools	102	-	72	*
7610	Hamilton Community Schools	*	-	-	-
3025	Hamilton Heights School Corporation	49	*	10	*
3005	Hamilton Southeastern Schools	1,016	-	232	24
4580	Hanover Community School Corporation	336	-	58	*
3625	Huntington County Community School Corporation	210	*	30	-
5385	Indianapolis Public Schools	2,977	-	1,887	123



Appendix F: Award Types by Choice Student School Corporation of Legal Settlement

Corp. No.	Corporation Name	2023-2024			
		90% Award		Tuition and Fees	
		Period One	Period Two	Period One	Period Two
6900	Jac-Cen-Del Community School Corporation	*	-	13	-
3945	Jay School Corporation	138	-	-	12
4015	Jennings County Schools	74	*	315	*
7150	John Glenn School Corporation	21	*	53	-
3785	Kankakee Valley School Corporation	311	-	24	*
7525	Knox Community School Corporation	26	-	11	-
3500	Kokomo-Center Township Consolidated School Corporation	87	*	150	-
7855	Lafayette School Corporation	561	-	90	*
4615	Lake Central School Corporation	708	-	164	*
4650	Lake Ridge Schools	49	-	89	-
4680	Lake Station Community Schools	23	-	81	*
4535	Lakeland School Corporation	*	-	*	-
3160	Lanesville Community School Corporation	12	-	28	*
4945	LaPorte Community School Corporation	157	-	24	*
1620	Lawrenceburg Community School Corporation	17	-	49	*
0665	Lebanon Community School Corporation	100	*	22	-
1895	Liberty-Perry Community School Corporation	*	-	*	-
2950	Linton-Stockton School Corporation	-	-	-	-
0875	Logansport Community School Corporation	-	-	*	-
5525	Loogootee Community School Corporation	*	-	*	-
8445	M S D Bluffton-Harrison	*	*	-	22
6460	M S D Boone Township	14	-	*	-
5300	M S D Decatur Township	208	12	79	*
5330	M S D Lawrence Township	868	-	631	27
5925	M S D Martinsville Schools	326	-	27	*
6590	M S D Mount Vernon	73	-	188	*
6600	M S D North Posey County Schools	50	-	145	-
4860	M S D of New Durham Township	*	-	11	-
5340	M S D Perry Township	844	*	1,530	34
5350	M S D Pike Township	795	-	267	40
2960	M S D Shakamak Schools	-	-	-	-
0125	M S D Southwest Allen County	599	22	195	*



Appendix F: Award Types by Choice Student School Corporation of Legal Settlement

Corp. No.	Corporation Name	2023-2024			
		90% Award		Tuition and Fees	
		Period One	Period Two	Period One	Period Two
7615	M S D Steuben County	16	*	-	-
8050	M S D Wabash County Schools	35	*	*	-
8115	M S D Warren County	-	-	*	-
5360	M S D Warren Township	598	*	481	*
5370	M S D Washington Township	716	*	505	20
5375	M S D Wayne Township	532	*	225	17
5615	Maconaquah School Corporation	*	-	*	-
3995	Madison Consolidated Schools	134	-	244	*
2825	Madison-Grant United School Corporation	29	-	*	-
8045	Manchester Community Schools	30	*	*	-
2865	Marion Community Schools	*	-	314	15
3640	Medora Community School Corporation	*	-	*	-
4600	Merrillville Community School	267	*	311	*
4925	Michigan City Area Schools	105	-	371	*
2275	Middlebury Community Schools	108	*	12	-
6910	Milan Community Schools	*	-	45	-
3335	Mill Creek Community School Corporation	*	-	*	-
2855	Mississinewa Community School Corporation	20	-	-	-
5085	Mitchell Community Schools	*	-	*	-
6820	Monroe Central School Corporation	*	-	*	-
5740	Monroe County Community School Corporation	241	*	269	*
5900	Monroe-Gregg School District	77	-	*	*
5930	Mooresville Consolidated School Corporation	304	*	28	-
3135	Mount Vernon Community School Corporation	231	*	51	-
1970	Muncie Community Schools	10	-	173	*
8305	Nettle Creek School Corporation	*	-	*	-
2400	New Albany-Floyd County Consolidated School Corporation	468	-	522	17
3445	New Castle Community School Corporation	*	*	*	-
4805	New Prairie United School Corporation	35	*	*	-
4255	Nineveh-Hensley-Jackson United Corporation	30	-	*	-
3070	Noblesville Schools	489	-	65	*
0025	North Adams Community Schools	*	-	255	*



Appendix F: Award Types by Choice Student School Corporation of Legal Settlement

Corp. No.	Corporation Name	2023-2024			
		90% Award		Tuition and Fees	
		Period One	Period Two	Period One	Period Two
6375	North Central Parke Community School Corporation	-	-	*	-
1375	North Daviess Community Schools	*	-	*	-
2735	North Gibson School Corporation	-	*	93	*
3180	North Harrison Community School Corporation	18	-	25	*
7515	North Judson-San Pierre School Corporation	89	-	*	-
4315	North Knox School Corporation	*	-	26	-
5075	North Lawrence Community Schools	81	*	151	*
5620	North Miami Community Schools	-	-	-	-
5835	North Montgomery Community School Corporation	*	-	-	-
5945	North Newton School Corporation	41	-	*	-
6715	North Putnam Community Schools	*	-	-	-
7385	North Spencer County School Corporation	*	-	21	*
8010	North Vermillion Community School Corporation	-	-	*	-
3295	North West Hendricks Schools	84	-	13	*
8515	North White School Corporation	*	-	-	-
2040	Northeast Dubois County School Corporation	*	-	14	-
7645	Northeast School Corporation	-	-	-	-
8375	Northeastern Wayne Schools	*	*	14	-
8435	Northern Wells Community Schools	26	-	*	19
0225	Northwest Allen County Schools	674	15	98	-
7350	Northwestern Consolidated School Corporation	24	-	10	*
3470	Northwestern School Corporation	10	-	22	-
5625	Oak Hill United School Corporation	16	-	*	*
7495	Oregon-Davis School Corporation	*	-	*	-
6145	Orleans Community Schools	*	-	-	-
6155	Paoli Community School Corporation	*	-	*	-
7175	Penn-Harris-Madison School Corporation	876	-	39	11
6325	Perry Central Community Schools Corporation	-	-	*	-
5635	Peru Community Schools	*	-	*	*
6445	Pike County School Corporation	*	-	*	-
0775	Pioneer Regional School Corporation	-	-	-	-
3330	Plainfield Community School Corporation	116	-	59	*



Appendix F: Award Types by Choice Student School Corporation of Legal Settlement

Corp. No.	Corporation Name	2023-2024			
		90% Award		Tuition and Fees	
		Period One	Period Two	Period One	Period Two
5485	Plymouth Community School Corporation	193	-	20	*
6550	Portage Township Schools	158	-	169	*
6520	Porter Township School Corporation	61	*	*	-
4515	Prairie Heights Community School Corporation	*	-	*	-
6825	Randolph Central School Corporation	-	-	*	-
6835	Randolph Eastern School Corporation	*	-	*	-
6805	Randolph Southern School Corporation	-	-	*	-
3815	Rensselaer Central School Corporation	11	-	42	-
5705	Richland-Bean Blossom Community School Corporation	48	-	46	-
8385	Richmond Community Schools	51	-	278	*
6080	Rising Sun-Ohio County Community School Corporation	*	-	11	-
4590	River Forest Community School Corporation	*	-	35	-
2645	Rochester Community School Corporation	-	-	-	-
6300	Rockville Community School Corporation	-	-	-	-
1180	Rossville Consolidated School District	34	-	*	-
6995	Rush County Schools	*	-	91	*
8205	Salem Community Schools	*	-	*	*
4670	School City of East Chicago	156	12	246	*
4710	School City of Hammond	475	*	920	13
4730	School City of Hobart	98	*	32	-
7200	School City of Mishawaka	204	-	177	*
4720	School Town of Highland	231	*	57	-
4740	School Town of Munster	164	*	*	-
5400	School Town of Speedway	41	*	22	*
7230	Scott County School District I	15	*	*	-
7255	Scott County School District II	71	-	15	*
3675	Seymour Community Schools	333	*	265	*
7285	Shelby Eastern Schools	*	*	16	-
7365	Shelbyville Central Schools	27	*	48	-
3435	Shenandoah School Corporation	14	-	-	-
3055	Sheridan Community Schools	18	-	*	-
5520	Shoals Community School Corporation	-	-	-	-



Appendix F: Award Types by Choice Student School Corporation of Legal Settlement

Corp. No.	Corporation Name	2023-2024			
		90% Award		Tuition and Fees	
		Period One	Period Two	Period One	Period Two
0945	Silver Creek School Corporation	168	*	111	-
8625	Smith-Green Community Schools	35	-	15	*
0035	South Adams Schools	*	-	*	-
7205	South Bend Community School Corporation	2,252	-	2,195	57
4940	South Central Community School Corporation	*	-	*	-
1600	South Dearborn Community School Corporation	29	-	102	*
2765	South Gibson School Corporation	23	-	181	*
3190	South Harrison Community Schools	30	-	83	*
3415	South Henry School Corporation	-	-	-	-
4325	South Knox School Corporation	*	-	41	-
5255	South Madison Community School Corporation	79	*	*	*
5845	South Montgomery Community School Corporation	*	-	*	*
5995	South Newton School Corporation	*	-	*	*
6705	South Putnam Community Schools	*	-	-	-
6865	South Ripley Community School Corporation	*	-	21	-
7445	South Spencer County School Corporation	-	-	91	*
8020	South Vermillion Community School Corporation	-	-	30	*
2100	Southeast Dubois County School Corporation	-	-	*	-
2455	Southeast Fountain School Corporation	-	-	13	-
0815	Southeastern School Corporation	-	-	*	-
3115	Southern Hancock County Community School Corporation	162	-	31	*
8425	Southern Wells Community Schools	*	-	-	*
2110	Southwest Dubois County School Corporation	*	-	15	-
6260	Southwest Parke Community School Corporation	-	-	*	-
7715	Southwest School Corporation	-	-	*	-
7360	Southwestern Consolidated School District Shelby County	13	-	*	-
4000	Southwestern-Jefferson County Consolidated Schools	24	-	65	*
6195	Spencer-Owen Community Schools	26	-	25	-
6160	Springs Valley Community School Corporation	-	-	*	-
1560	Sunman-Dearborn Community School Corporation	26	-	144	*
7775	Switzerland County School Corporation	*	-	*	-
3460	Taylor Community School Corporation	27	*	*	-



Appendix F: Award Types by Choice Student School Corporation of Legal Settlement

Corp. No.	Corporation Name	2023-2024			
		90% Award		Tuition and Fees	
		Period One	Period Two	Period One	Period Two
6350	Tell City-Troy Township School Corporation	-	-	-	-
7865	Tippecanoe School Corporation	959	*	46	-
4445	Tippecanoe Valley School Corporation	26	-	*	-
7945	Tipton Community School Corporation	18	-	*	*
4915	Tri Township Consolidated School Corporation	*	-	*	-
7935	Tri-Central Community Schools	*	-	*	-
8535	Tri-County School Corporation	*	-	*	-
4645	Tri-Creek School Corporation	183	*	52	*
5495	Triton School Corporation	*	-	-	-
6310	Turkey Run Community School Corporation	-	-	-	-
8565	Twin Lakes School Corporation	16	-	*	-
7950	Union County/College Corner Joint School District	*	-	16	-
6795	Union School Corporation	-	-	*	-
6530	Union Township School Corporation	51	*	13	-
7215	Union-North United School Corporation	62	-	10	*
6560	Valparaiso Community Schools	192	-	134	11
8030	Vigo County School Corporation	*	-	250	*
4335	Vincennes Community School Corporation	*	-	171	*
8060	Wabash City Schools	16	-	*	-
2285	Wa-Nee Community Schools	55	-	*	-
8130	Warrick County School Corporation	459	-	288	13
4415	Warsaw Community Schools	334	-	*	*
1405	Washington Community Schools	206	-	*	*
4345	Wawasee Community School Corporation	42	*	*	-
1885	Wes-Del Community Schools	*	-	19	-
6630	West Central School Corporation	*	-	*	-
0940	West Clark Community Schools	-	-	-	-
7875	West Lafayette Community School Corporation	38	-	*	-
6065	West Noble School Corporation	10	-	12	-
8220	West Washington School Corporation	*	-	*	-
0615	Western Boone County Community School District	18	-	*	-
3490	Western School Corporation	30	*	32	*



Appendix F: Award Types by Choice Student School Corporation of Legal Settlement

Corp. No.	Corporation Name	2023-2024			
		90% Award		Tuition and Fees	
		Period One	Period Two	Period One	Period Two
8355	Western Wayne Schools	-	-	15	-
3030	Westfield-Washington Schools	212	-	37	10
4525	Westview School Corporation	19	-	-	-
2980	White River Valley School District	-	-	-	-
4760	Whiting School City	12	-	34	-
4455	Whitko Community School Corporation	40	-	*	*
8665	Whitley County Consolidated Schools	89	*	15	-
1910	Yorktown Community Schools	25	-	25	*
0630	Zionsville Community Schools	130	-	17	*

- Public school corporations with no Choice students have been marked with a hyphen.
 - For data for Choice schools that show no data in the table above, please refer to previous versions of the Annual Choice Report
 * Counts less than 10 have been asterisked to comply with FERPA.



APPENDIX G: AWARD TYPES BY CHOICE SCHOOL

Appendix G: Award Types by Choice School

School No.	School Name	County	2023-2024			
			90% Award		Tuition and Fees	
			Period One	Period Two	Period One	Period Two
A260	Aboite Christian School	Huntington	-	-	45	*
C905	Adventist Christian Elementary	Monroe	-	-	*	*
D912	Al-Haqq Foundation Academy	Marion	68	-	-	*
A515	All Saints Catholic School	Cass	-	-	-	-
D918	Alyssum Montessori School	Allen	29	*	-	-
B806	Ambassador Christian Academy	Lake	26	*	159	-
C250	Anderson Christian School	Madison	10	-	24	*
B760	Andrean High School	Lake	358	*	-	*
A149	Apogee School for the Gifted	Marion	28	-	-	*
B755	Aquinas School at Saint Andrew's	Lake	*	-	207	*
B892	Ascension Lutheran Christian School	Lake	19	-	34	*
A248	Ascension Lutheran School	Allen	-	-	62	-
B764	Avicenna Academy	Lake	-	-	-	-
D196	Bais Yaakov High School of Indiana	St Joseph	29	-	-	-
C575	Baptist Academy	Marion	197	*	-	*
B015	Bethany Christian School	Elkhart	280	-	-	*
B290	Bethesda Christian School	Hendricks	326	*	121	10
C705	Bishop Chatard High School	Marion	443	-	*	*
A120	Bishop Dwenger High School	Allen	649	15	68	-
A125	Bishop Luers High School	Allen	493	*	*	-
B970	Bishop Noll Institute	Lake	504	*	17	*
A172	Blackhawk Christian Elementary School	Allen	385	*	78	*
A170	Blackhawk Christian Jr/Sr High School	Allen	330	*	43	-
A009	Bloomington Islamic School	Monroe	-	-	-	-
C360	Brebeuf Jesuit Preparatory School	Marion	238	-	-	-
C396	Burge Terrace Christian School	Marion	36	-	105	-
B815	Calumet Christian School	Lake	37	-	145	-
C580	Calvary Christian School	Marion	149	-	60	*
C315	Calvary Lutheran School	Marion	54	*	187	*
C690	Capitol City SDA Church School	Marion	-	-	53	*



Appendix G: Award Types by Choice School

School No.	School Name	County	2023-2024			
			90% Award		Tuition and Fees	
			Period One	Period Two	Period One	Period Two
C715	Cardinal Ritter High School	Marion	478	*	70	*
C700	Cathedral High School	Marion	608	*	-	*
D415	Central Catholic Jr/Sr High School	Tippecanoe	360	*	*	*
C625	Central Catholic School	Marion	230	-	-	-
A249	Central Christian School	Allen	*	-	130	*
A370	Central Lutheran School	Allen	*	-	310	*
C519	Chapel Hill Christian School	Marion	*	-	57	*
D545	Christ the King School	Vanderburgh	109	*	49	-
C585	Christ the King School	Marion	49	-	199	-
D230	Christ the King School	St Joseph	103	-	243	*
B045	Christian Academy of Indiana	Floyd	700	*	126	15
B493	Christian Academy of Madison	Jefferson	30	-	106	*
B195	Cicero Adventist School	Hamilton	-	-	17	*
B985	City Baptist Schools	Lake	-	-	-	-
C933	Clear Creek Christian School	Monroe	-	-	145	*
A479	ClearView Education	Boone	-	-	-	-
A875	Clinton Christian School	Elkhart	195	*	11	*
C495	Colonial Christian School	Marion	131	-	91	*
A450	Columbus Christian School Inc.	Bartholomew	111	*	280	12
D305	Community Baptist Christian School	St Joseph	200	-	-	*
D862	Community Christian School	Wayne	-	-	111	*
A205	Concordia Evangelical Lutheran School	Allen	25	-	322	*
A195	Concordia Lutheran High School	Allen	507	*	-	-
C281	Cornerstone Baptist Academy	Marion	12	-	66	*
A236	Cornerstone College Preparatory School	Allen	*	-	38	-
D550	Corpus Christi School	Vanderburgh	*	-	149	*
D235	Corpus Christi School	St Joseph	-	-	147	*
B469	Covenant Christian High School	Jasper	230	-	*	-
C527	Covenant Christian High School	Marion	265	*	-	*
C910	Covenant Christian School	Monroe	140	*	-	-
D189	Covenant Christian School	St Joseph	190	-	10	-
B085	Covington Christian School	Fountain	-	-	*	-
C215	Cross Street Christian School	Madison	-	-	39	*



Appendix G: Award Types by Choice School

School No.	School Name	County	2023-2024			
			90% Award		Tuition and Fees	
			Period One	Period Two	Period One	Period Two
B009	Crossing Educational Center	Elkhart	195	30	-	10
C514	Crosspointe Christian Academy	Marion	43	-	214	*
A275	Crossroad Academy	Allen	-	*	11	*
B771	Crown Point Christian School	Lake	652	*	*	*
A127	The CTM Academy	Marion	32	12	107	87
A119	Dana Christian School	Vermillion	-	-	22	-
A293	Darul Uloom Al Ansaar	Allen	-	-	16	*
C223	Delaware Christian Academy	Delaware	-	-	-	-
B470	DeMotte Christian School	Jasper	233	-	30	*
C112	Door Prairie Adventist School	LaPorte	-	-	*	*
A126	Edinburgh Christian School	Johnson	19	-	*	*
A990	Elkhart Christian Academy	Elkhart	543	*	-	*
B160	Eman Schools	Hamilton	280	-	-	*
D063	Emmanuel Baptist Academy	Porter	*	-	79	*
A142	Emmanuel Christian School of Fort Wayne	Allen	50	*	-	-
A215	Emmanuel Saint Michael Lutheran School	Allen	-	-	331	*
C680	Emmaus Lutheran School	Marion	*	-	34	*
A220	Emmaus Lutheran School	Allen	-	-	136	*
D485	Evansville Christian School	Vanderburgh	123	*	12	-
D489	Evansville Christian School - Newburgh	Vanderburgh	635	*	47	*
D525	Evansville Day School	Vanderburgh	142	*	-	*
D526	Evansville Day School PK-08	Vanderburgh	-	-	-	-
D625	Evansville Lutheran School	Vanderburgh	125	*	13	-
B748	Faith Academy	Lake	-	-	-	-
B037	Faith Christian School	Fayette	-	-	-	-
D452	Faith Christian School	Tippecanoe	601	*	52	-
A303	FaithPrep Academy	Bartholomew	21	*	*	*
B161	Fishers Christian Academy	Hamilton	134	-	-	*
B565	Flaget Elementary School	Knox	-	-	124	*
B131	Genai Excellence Academy	Elkhart	*	*	*	-
A304	GEO Focus Academy	Marion	74	*	51	*
A724	Good Shepherd Christian Academy	Decatur	-	-	35	*
D555	Good Shepherd School	Vanderburgh	31	*	254	*



Appendix G: Award Types by Choice School

School No.	School Name	County	2023-2024			
			90% Award		Tuition and Fees	
			Period One	Period Two	Period One	Period Two
C850	Grace Baptist Christian School	Marshall	46	-	33	-
D329	Grace Christian Academy	Scott	105	*	*	*
D310	Granger Christian School	St Joseph	179	-	*	-
C966	Greenwood Christian Academy	Johnson	413	*	15	*
C954	Greenwood Christian Academy High School	Johnson	168	*	-	-
B549	Greenwood Christian School	Johnson	-	-	131	*
B249	Guerin Catholic High School	Hamilton	304	-	13	*
A004	Hagia Sophia Classical Academy	Marion	13	*	-	-
B790	Hammond Baptist Elementary & High School	Lake	-	-	-	-
A306	Harriet Tubman School of Excellence	Marion	*	-	-	*
C475	Hasten Hebrew Academy of Indianapolis	Marion	48	-	-	-
C275	Heritage Christian School	Marion	843	-	40	*
A746	Heritage Hall Christian School	Delaware	-	-	163	*
C020	Highland Christian School	Lake	424	*	36	-
A138	Hillsboro Christian Academy	Fountain	-	-	23	-
C590	Holy Angels Catholic School	Marion	114	-	14	-
C595	Holy Cross Central School	Marion	-	-	-	-
C267	Holy Cross Lutheran School	Marion	209	-	20	*
A225	Holy Cross Lutheran School	Allen	70	-	282	-
D725	Holy Cross School	Vigo	-	-	-	-
B115	Holy Cross School	Gibson	-	-	90	-
D240	Holy Cross School	St Joseph	15	-	313	-
C211	Holy Cross School	Madison	*	-	138	*
A865	Holy Family School	Dubois	-	-	-	-
B050	Holy Family School	Floyd	25	-	175	*
D245	Holy Family School	St Joseph	*	-	268	*
C545	Holy Name School	Marion	13	-	206	*
D560	Holy Redeemer School	Vanderburgh	*	-	196	*
D565	Holy Rosary School	Vanderburgh	43	-	231	*
D570	Holy Spirit School	Vanderburgh	137	*	26	-
C390	Holy Spirit School	Marion	56	*	311	*
A871	Holy Trinity Catholic School	Dubois	32	-	261	*
A309	Horizon Christian Academy	Allen	-	-	-	-



Appendix G: Award Types by Choice School

School No.	School Name	County	2023-2024			
			90% Award		Tuition and Fees	
			Period One	Period Two	Period One	Period Two
A302	Horizon Christian Academy II	Allen	-	-	-	-
A307	Horizon Christian Academy III	Allen	-	-	-	-
C282	Horizon Christian School	Marion	300	*	-	*
C563	Horizon Christian School-Shepherd Campus	Marion	109	-	-	*
B725	Howe School	LaGrange	-	-	-	-
B418	Huntington Catholic School	Huntington	137	*	17	-
A122	Illiana Christian High School	Lake	324	-	-	*
C600	Immaculate Heart of Mary School	Marion	10	-	113	*
B445	Immanuel Lutheran School	Jackson	280	*	*	-
D090	Immanuel Lutheran School	Porter	148	*	*	*
B190	Indiana Academy	Hamilton	93	-	-	-
C175	Indiana Christian Academy	Madison	35	*	232	10
B821	Indiana Horizon Academy	Lake	122	-	*	*
C455	Indianapolis Junior Academy	Marion	24	-	29	-
C679	Indianapolis Southside Christian School	Marion	-	-	49	-
B251	Indy West Christian School	Marion	76	-	-	-
A148	INspire Academy	Hamilton	-	-	10	*
D914	International Leadership School	Allen	378	28	-	-
C678	International School of Indiana (6-8)	Marion	29	-	-	*
C677	International School of Indiana (9-12)	Marion	34	-	-	-
A115	International Soccer Academy of America	St Joseph	29	-	-	-
C513	Islamic Academy of Indianapolis	Marion	87	*	-	-
A308	Islamic Academy of Kendallville	Noble	59	-	-	*
B302	Islamic School of Plainfield	Hendricks	24	-	-	*
D913	Israel School of Excellence	Lake	63	*	-	*
D915	Israel School of Excellence Prep	Lake	51	*	-	*
B483	Jay County Christian Academy	Jay	138	-	*	10
D722	John Paul II Catholic High School	Vigo	-	-	-	-
D875	Kingdom Academy of Bluffton	Wells	-	-	-	68
B295	Kingsway Christian School	Hendricks	356	*	*	-
D440	Lafayette Christian School	Tippecanoe	242	-	76	-
B595	Lakeland Christian Academy	Kosciusko	330	*	-	*
B145	Lakeview Christian School	Grant	29	-	104	*



Appendix G: Award Types by Choice School

School No.	School Name	County	2023-2024			
			90% Award		Tuition and Fees	
			Period One	Period Two	Period One	Period Two
A740	Lakewood Park Christian School	DeKalb	540	13	-	*
B248	Legacy Christian School	Hamilton	204	-	-	*
B299	Legacy Learning Center	Marion	268	*	-	*
A317	Liberty Academy of Columbus	Bartholomew	34	10	-	-
C226	Liberty Christian Elementary	Madison	88	*	78	*
C225	Liberty Christian School	Madison	145	*	23	*
C224	Liberty Christian School (7-8)	Madison	-	-	-	-
B129	Life Christian STEAM Academy	Lake	40	-	-	*
C927	Lighthouse Christian Academy	Monroe	174	*	59	*
B465	Lutheran Central School	Jackson	130	-	-	-
C270	Lutheran High School	Marion	223	*	*	*
A235	Lutheran South Unity School	Allen	196	*	-	-
A102	Maple Creek Adventist Academy	Bartholomew	-	-	*	*
D165	Marian High School	St Joseph	614	-	14	*
A208	Marian University Preparatory School	Marion	*	-	-	*
C125	Marquette Catholic High School	LaPorte	181	*	-	*
D530	Mater Dei High School	Vanderburgh	378	-	25	-
D315	Michiana Christian School	St Joseph	*	-	52	*
B747	Midwest Elite Preparatory Academy	Lake	-	-	-	-
D177	Mishawaka Catholic School	St Joseph	82	-	157	*
B915	Mizpah Seventh-Day Adventist School	Lake	-	-	-	-
A324	Montessori Science Academy	Hancock	24	-	*	-
C965	Mooresville Christian Academy	Morgan	512	*	*	*
B951	Morning Star Academy	Lake	*	-	61	*
B904	Mosaic Middle School	Lake	-	-	-	-
A130	Most Precious Blood School	Allen	29	-	140	*
C628	MTI School of Knowledge	Marion	423	12	-	16
D065	Nativity of Our Savior School	Porter	*	-	158	-
C265	Nativity School	Marion	54	-	231	*
D249	New Vision Christian Academy	St Joseph	*	-	40	-
D158	North Liberty Christian School	St Joseph	-	-	77	*
A405	North Star Montessori School	Bartholomew	-	-	-	-
B773	Northwest Adventist Christian School	Lake	*	-	*	*



Appendix G: Award Types by Choice School

School No.	School Name	County	2023-2024			
			90% Award		Tuition and Fees	
			Period One	Period Two	Period One	Period Two
C105	Notre Dame Elementary School	LaPorte	32	-	118	*
D135	Oldenburg Academy	Franklin	107	-	-	-
B246	Our Lady of Grace School	Hamilton	261	-	39	-
C025	Our Lady of Grace School	Lake	-	-	136	-
D250	Our Lady of Hungary School	St Joseph	*	-	182	*
C605	Our Lady of Lourdes School	Marion	20	-	137	-
B060	Our Lady of Perpetual School	Floyd	50	*	201	*
A575	Our Lady of Providence High School	Clark	253	*	-	*
B535	Our Lady of the Greenwood School	Johnson	70	*	179	*
A106	Our Lady School	Allen	17	-	111	-
C512	Our Shepherd Lutheran School	Hendricks	154	*	*	*
B167	Paddock View Residential Center	Grant	-	-	-	-
C899	Pinnacle School	Monroe	-	-	-	-
B510	Pope John XXIII School	Jefferson	-	-	199	*
D080	Portage Christian School	Porter	130	-	100	-
A870	Precious Blood School	Dubois	-	-	-	-
A163	Premier Soccer Academy	Hamilton	*	-	-	-
C623	Providence Cristo Rey High School	Marion	237	-	-	*
C110	Queen of All Saints School	LaPorte	21	-	141	*
A135	Queen of Angels School	Allen	128	*	*	-
D198	Queen of Peace School	St Joseph	48	-	55	-
B367	Redeemer Lutheran School	Howard	153	*	-	-
D535	Reitz Memorial High School	Vanderburgh	399	*	24	*
D317	Resurrection Lutheran Academy	St Joseph	67	-	*	-
D610	Resurrection School	Vanderburgh	*	-	290	-
D860	Richmond Academy	Wayne	-	-	-	-
D845	Richmond Adventist Elementary School	Wayne	*	-	*	-
A042	River Montessori High School	St Joseph	33	-	-	-
A121	Riverview Adventist Christian Academy	Vanderburgh	28	*	*	-
B560	Rivet Middle & High School	Knox	-	-	119	-
C320	Roncalli High School	Marion	803	*	51	*
A470	Sacred Heart School	Benton	-	-	85	*
B605	Sacred Heart School	Kosciusko	132	-	-	-



Appendix G: Award Types by Choice School

School No.	School Name	County	2023-2024			
			90% Award		Tuition and Fees	
			Period One	Period Two	Period One	Period Two
A570	Sacred Heart School	Clark	*	-	147	-
D255	Saint Adalbert School	St Joseph	194	-	-	-
A270	Saint Aloysius Catholic School	Allen	44	*	-	*
C205	Saint Ambrose School	Madison	-	-	-	-
B440	Saint Ambrose School	Jackson	-	-	118	-
C615	Saint Anthony Catholic School	Marion	55	-	186	*
D260	Saint Anthony De Padua School	St Joseph	108	-	85	*
A560	Saint Anthony School	Clark	63	-	162	*
B475	Saint Augustine School	Jasper	-	-	49	*
C295	Saint Barnabas School	Marion	117	*	251	17
A425	Saint Bartholomew School	Bartholomew	38	*	273	20
D590	Saint Benedict Cathedral School	Vanderburgh	43	-	164	*
D805	Saint Bernard Elementary School	Wabash	46	*	*	*
D370	Saint Bernard School	Spencer	-	-	111	*
D420	Saint Boniface School	Tippecanoe	85	-	*	-
C040	Saint Bridget School	Lake	-	-	-	-
B950	Saint Casimir School	Lake	*	-	323	*
C900	Saint Charles Borromeo School	Monroe	56	*	147	-
A145	Saint Charles Borromeo School	Allen	104	-	574	*
C795	Saint Christopher School	Marion	77	*	99	-
B800	Saint Edward School	Lake	-	-	-	-
D840	Saint Elizabeth Ann Seton School	Wayne	-	-	152	*
B035	Saint Gabriel Parochial School	Fayette	*	-	122	*
D435	Saint James Lutheran School	Tippecanoe	124	*	-	-
B120	Saint James School	Gibson	-	-	152	*
C645	Saint Joan of Arc School	Marion	136	-	-	*
B960	Saint John Bosco School	Lake	*	*	210	*
A695	Saint John Evangelical Lutheran School	Dearborn	-	-	41	*
C400	Saint John Evangelical Lutheran School	Marion	10	-	152	*
B780	Saint John Evangelist School	Lake	30	-	223	*
B020	Saint John Evangelist School	Elkhart	-	-	120	*
B450	Saint John Lutheran School	Jackson	-	-	84	-
B275	Saint John Lutheran School	Harrison	-	-	50	*



Appendix G: Award Types by Choice School

School No.	School Name	County	2023-2024			
			90% Award		Tuition and Fees	
			Period One	Period Two	Period One	Period Two
C150	Saint John Lutheran School	LaPorte	116	*	*	-
C985	Saint John Lutheran School	Noble	-	-	129	*
A355	Saint John the Baptist Catholic School	Allen	126	-	55	-
D465	Saint John the Baptist School	Tippecanoe	-	-	-	-
D265	Saint John the Baptist School	St Joseph	*	-	110	*
B965	Saint John the Baptist School	Lake	-	-	149	*
D815	Saint John the Baptist School	Warrick	28	-	249	*
A150	Saint John the Baptist School	Allen	28	*	257	-
A365	Saint John-Emmanuel Lutheran School	Allen	-	-	73	-
A340	Saint Joseph Catholic School	Allen	88	-	*	*
A350	Saint Joseph Hessen Cassel Catholic School	Allen	12	-	143	-
C145	Saint Joseph School	LaPorte	-	-	-	-
A735	Saint Joseph School	Dekalb	66	-	*	-
D335	Saint Joseph School	Shelby	17	*	56	-
D605	Saint Joseph School	Vanderburgh	40	-	89	*
B280	Saint Joseph School	Harrison	*	-	73	*
B105	Saint Joseph School	Gibson	-	-	86	*
D270	Saint Joseph School	St Joseph	89	-	205	*
A035	Saint Joseph School	Adams	*	-	220	*
D225	Saint Joseph's High School	St Joseph	598	-	-	*
A155	Saint Joseph-Saint Elizabeth Campus I	Allen	152	-	-	-
A104	Saint Joseph-Saint Elizabeth Campus II	Allen	349	*	74	*
D275	Saint Jude Catholic School	St Joseph	176	-	-	-
C300	Saint Jude Elementary School	Marion	32	-	358	-
A160	Saint Jude Elementary School	Allen	21	-	281	*
D425	Saint Lawrence Elementary School	Tippecanoe	159	-	*	-
A790	Saint Lawrence School	Delaware	-	-	-	-
A700	Saint Lawrence School	Dearborn	34	-	154	*
C280	Saint Lawrence School	Marion	61	-	136	*
A360	Saint Louis Besancon Catholic School	Allen	107	-	25	-
B227	Saint Louis de Montfort Catholic School	Hamilton	54	-	218	*
D130	Saint Louis School	Ripley	-	-	205	-
C435	Saint Luke School	Marion	81	-	192	16



Appendix G: Award Types by Choice School

School No.	School Name	County	2023-2024			
			90% Award		Tuition and Fees	
			Period One	Period Two	Period One	Period Two
B285	Saint Malachy School	Hendricks	209	*	99	-
C305	Saint Mark School	Marion	*	-	444	*
D430	Saint Mary Cathedral School	Tippecanoe	134	-	*	-
B835	Saint Mary Catholic Community School	Lake	118	-	246	*
D140	Saint Mary Elementary School	Rush	-	-	98	*
C980	Saint Mary Elementary School	Noble	46	-	74	*
B067	Saint Mary of-the-Knobs Catholic School	Floyd	-	-	175	-
C210	Saint Mary School	Madison	-	-	-	-
A730	Saint Mary School	Decatur	-	-	12	-
A690	Saint Mary School	Dearborn	-	-	-	-
C190	Saint Mary School	Madison	10	-	95	*
B515	Saint Mary School	Jennings	*	-	177	-
A795	Saint Mary School	Delaware	45	-	88	-
B930	Saint Mary School	Lake	-	-	187	-
B065	Saint Mary's Catholic School	Floyd	-	-	-	-
D285	Saint Matthew Cathedral School	St Joseph	42	-	273	*
D095	Saint Matthew School	Posey	-	-	62	*
C440	Saint Matthew School	Marion	97	*	161	*
B775	Saint Michael School	Lake	175	-	-	-
B095	Saint Michael School	Franklin	-	-	173	*
B265	Saint Michael School	Hancock	-	-	115	*
C855	Saint Michael School	Marshall	143	-	28	-
C650	Saint Michael the Archangel School	Marion	37	-	250	*
C445	Saint Monica School	Marion	84	*	219	*
A680	Saint Nicholas School	Ripley	-	-	152	*
D050	Saint Patrick School	Porter	36	*	89	*
D720	Saint Patrick School	Vigo	-	-	269	*
A685	Saint Paul Catholic School	Dearborn	-	-	-	-
D085	Saint Paul Catholic School	Porter	74	-	72	*
A423	Saint Paul Lutheran Preschool	Bartholomew	-	-	11	-
C130	Saint Paul Lutheran School	LaPorte	-	-	-	-
A245	Saint Paul Lutheran School	Allen	121	*	-	-
B155	Saint Paul Parish School	Grant	12	-	119	*



Appendix G: Award Types by Choice School

School No.	School Name	County	2023-2024			
			90% Award		Tuition and Fees	
			Period One	Period Two	Period One	Period Two
A550	Saint Paul School	Clark	58	*	184	-
C065	Saint Paul's Lutheran School	Lake	115	-	14	-
C825	Saint Paul's Lutheran School	Marshall	40	-	*	*
A040	Saint Peter Immanuel Lutheran School	Adams	-	-	36	*
D375	Saint Peter Lutheran School	Starke	126	-	-	*
A435	Saint Peter Lutheran School	Bartholomew	355	-	*	-
A250	Saint Peter's Lutheran School	Allen	200	*	-	-
C655	Saint Philip Neri School	Marion	248	-	-	-
D100	Saint Philip School	Posey	*	-	131	*
D164	Saint Pius X Catholic School	St Joseph	176	-	133	*
C450	Saint Pius X School	Marion	27	*	238	*
C310	Saint Roch School	Marion	66	-	168	*
B518	Saint Rose of Lima School	Johnson	37	*	45	-
C665	Saint Simon the Apostle School	Marion	41	-	214	*
C120	Saint Stanislaus Kostka School	LaPorte	*	-	96	-
B865	Saint Stanislaus School	Lake	10	-	145	*
B300	Saint Susanna School	Hendricks	86	-	118	*
D615	Saint Theresa School	Vanderburgh	-	-	-	-
C670	Saint Therese Little Flower School	Marion	53	-	253	*
A175	Saint Therese School	Allen	*	-	94	-
C675	Saint Thomas Aquinas School	Marion	34	-	57	*
A311	Saint Thomas More Academy	St Joseph	163	-	-	-
C060	Saint Thomas More School	Lake	126	*	190	*
A975	Saint Thomas the Apostle School	Elkhart	169	-	*	-
C160	Saint Vincent DePaul School	Lawrence	23	*	139	*
A980	Saint Vincent DePaul School	Elkhart	29	*	145	*
A180	Saint Vincent DePaul School	Allen	592	14	29	-
D105	Saint Wendel School	Posey	-	-	151	-
B540	Saints Francis and Clare Catholic School	Johnson	-	-	233	*
B395	Saints Joan of Arc & Patrick School	Howard	18	-	206	*
B125	Saints Peter & Paul School	Gibson	*	-	*	-
C710	Seccina Memorial School	Marion	406	-	*	*
C791	School for Community Learning	Marion	59	*	-	*



Appendix G: Award Types by Choice School

School No.	School Name	County	2023-2024			
			90% Award		Tuition and Fees	
			Period One	Period Two	Period One	Period Two
D842	Seton Catholic High School	Wayne	66	*	54	*
B455	Seymour Christian Academy	Jackson	-	-	128	*
B505	Shawe Memorial High School	Jefferson	135	-	47	*
D195	South Bend Hebrew Day School	St Joseph	149	-	-	-
D300	South Bend Junior Academy School	St Joseph	-	-	40	*
C349	Southport Presbyterian Christian School	Marion	-	-	-	-
B928	Spirit of God Accelerated School	Lake	-	-	-	-
A152	Stepping Stones Education Academy	Marion	-	*	-	*
A200	Suburban Bethlehem Lutheran School	Allen	-	-	203	-
C325	Suburban Christian School	Marion	-	-	595	*
C940	Tabernacle Christian Schools	Morgan	336	*	36	10
D748	Terre Haute SDA School	Vigo	-	-	-	-
C589	The Independence Academy	Marion	33	-	-	*
B136	The King's Academy	Grant	51	*	111	*
C773	The Oaks Academy	Marion	313	-	-	*
B297	The Oaks Academy - Brookside	Marion	237	*	-	*
C774	The Oaks Academy - Middle School	Marion	231	*	-	*
B157	The Montessori School at WPC	Wabash	*	-	13	*
C918	The Prep School	Monroe	-	-	-	-
D458	Tippecanoe Christian School	Tippecanoe	-	-	-	-
B293	Todd Academy	Marion	-	-	-	-
C699	TP Schools	Marion	25	-	217	*
C375	Traders Point Christian Academy	Boone	275	*	23	14
C561	Trinity Christian School	Marion	*	-	154	*
B901	Trinity Educational Daycare & Academy	Lake	-	-	-	-
B452	Trinity Lutheran High School	Jackson	129	-	16	-
C050	Trinity Lutheran School	Lake	47	*	19	*
A985	Trinity Lutheran School	Elkhart	47	-	155	-
C395	Trinity Lutheran School	Marion	144	-	-	-
B850	Trinity Lutheran School	Lake	109	-	39	-
D217	Trinity School at Greenlawn	St Joseph	149	-	*	-
D907	TROY Center	Whitley	36	*	-	*
B205	Union Bible Academy	Hamilton	-	-	61	-
B241	University High School of Indiana	Hamilton	109	-	*	*



Appendix G: Award Types by Choice School

School No.	School Name	County	2023-2024			
			90% Award		Tuition and Fees	
			Period One	Period Two	Period One	Period Two
D073	Victory Christian Academy	Porter	128	-	193	*
B600	Warsaw Christian School	Kosciusko	-	-	-	-
A665	Washington Catholic Elementary School	Daviess	92	-	-	-
A660	Washington Catholic Middle/High School	Daviess	127	-	-	*
D580	Westside Catholic School	Vanderburgh	*	-	125	*
A430	White Creek Lutheran School	Bartholomew	101	-	*	-
A375	Woodburn Lutheran School	Allen	115	-	-	-
D281	Yeshiva of South Bend	St Joseph	15	-	-	*
B260	Zion Lutheran School	Hancock	155	-	*	*
B459	Zion Lutheran School	Jackson	19	-	*	-

- Choice schools who did not participate in the Program or did not have any Choice students have been marked with a hyphen.
- For data for Choice schools that show no data in the table above, please refer to previous versions of the Annual Choice Report.
- * Counts of less than 10 have been asterisked to comply with FERPA.



APPENDIX H: CHOICE SCHOLARSHIP STUDENTS BY COUNTY OF RESIDENCE

Appendix H: Choice Students by County of Residence		
County	2023-2024	
	Period One	Period Two
Adams	273	19
Allen	9,329	152
Bartholomew	1,047	38
Benton	113	*
Blackford	*	-
Boone	290	*
Brown	48	*
Carroll	38	-
Cass	10	-
Clark	1,241	16
Clay	*	-
Clinton	103	*
Crawford	14	-
Daviess	218	*
Dearborn	367	*
Decatur	83	*
Dekalb	374	*
Delaware	320	*
Dubois	279	*
Elkhart	1,639	17
Fayette	126	*
Floyd	990	17
Fountain	31	-
Franklin	188	*
Fulton	-	-
Gibson	317	*
Grant	436	17
Greene	28	-
Hamilton	2,577	45
Hancock	658	17
Harrison	196	*



Appendix H: Choice Students by County of Residence

County	2023-2024	
	Period One	Period Two
Hendricks	1,852	37
Henry	44	*
Howard	377	*
Huntington	240	*
Jackson	836	*
Jasper	388	*
Jay	138	12
Jefferson	467	*
Jennings	389	*
Johnson	1,499	40
Knox	242	*
Kosciusko	405	*
Lagrange	38	-
Lake	6,215	102
LaPorte	737	*
Lawrence	243	*
Madison	1,043	36
Marion	14,736	350
Marshall	291	*
Martin	*	-
Miami	11	*
Monroe	604	10
Montgomery	18	*
Morgan	777	17
Newton	50	*
Noble	292	*
Ohio	16	-
Orange	*	-
Owen	51	-
Parke	*	-
Perry	*	-
Pike	12	-
Porter	1,095	23
Posey	456	*
Pulaski	12	*



Appendix H: Choice Students by County of Residence

County	2023-2024	
	Period One	Period Two
Putnam	17	-
Randolph	20	-
Ripley	308	-
Rush	93	*
Scott	104	*
Shelby	149	*
Spencer	114	*
St Joseph	5,889	72
Starke	136	-
Steuben	19	*
Sullivan	*	-
Switzerland	*	-
Tippecanoe	1,698	13
Tipton	31	*
Union	17	-
Vanderburgh	3,398	42
Vermillion	33	*
Vigo	252	*
Wabash	90	*
Warren	*	-
Warrick	747	13
Washington	32	*
Wayne	392	*
Wells	38	49
White	44	-
Whitley	199	*

- Choice schools who did not participate in the Program or did not have any Choice students have been marked with a hyphen.

- For data for Choice schools that show no data in the table above, please refer to previous versions of the Annual Choice Report.

* Counts of less than 10 have been asterisked to comply with FERPA.