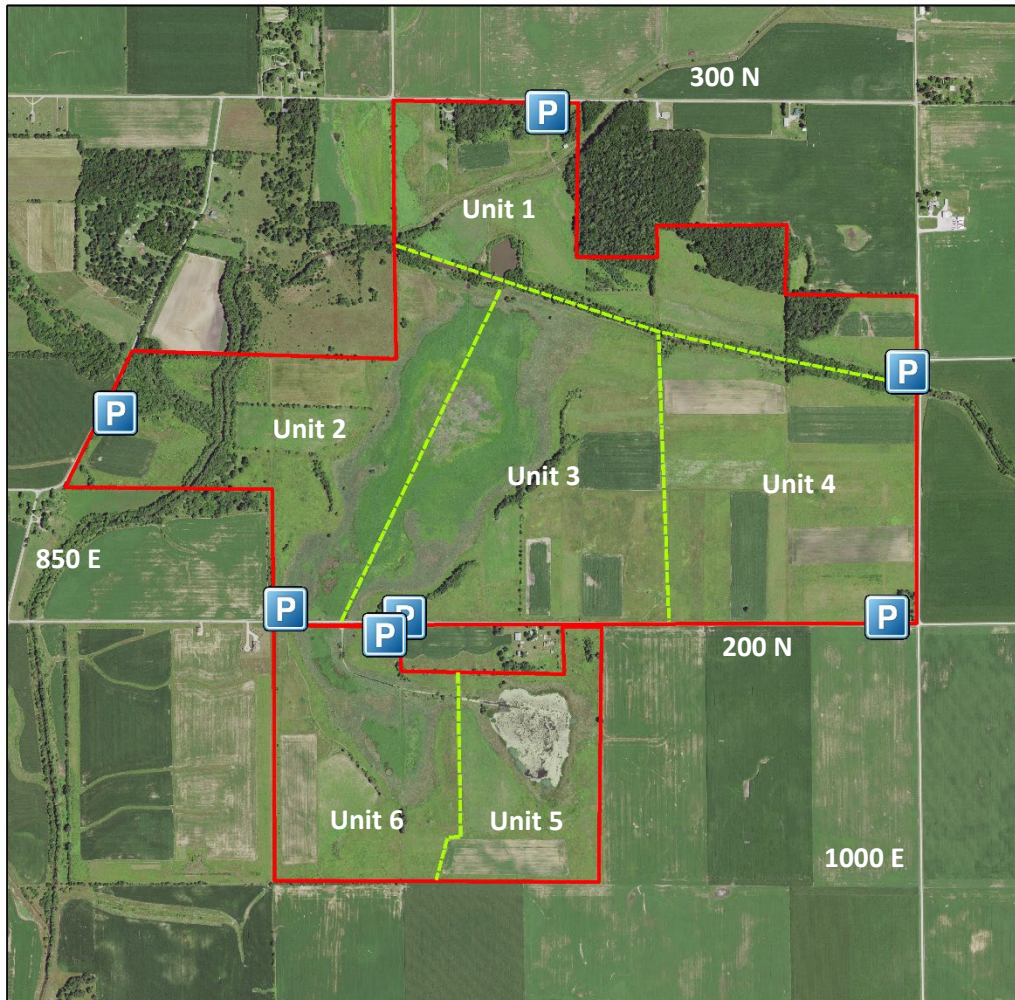


Pine Creek Game Bird Area Benton County, Indiana



Pine Creek Game Bird Area is an 807-acre property divided into six hunting units. It was purchased by the Division of Fish & Wildlife in 1991-1993 using Game Bird Habitat Stamp funds. The site is predominantly grass with multiple large wetlands, a stream, some agricultural ground, and a small component of forested area.

Pine Creek Game Bird Area is open to the public from January through September. Fishing, hiking, birding, shed hunting, and foraging for nuts, berries, and mushrooms is allowed. No other plant materials can be removed from the site without proper DNR permits. Dogs are not allowed unless being used by registered hunters in the pursuit of game. All hunting efforts are awarded through preseason drawings managed by Willow Slough FWA.

Directions: From Fowler, go east on S.R. 18 for 7 miles to 850 E. Go north on 850 E. to 200 N. Turn east on 200 N. and travel $\frac{3}{4}$ of a mile. The property will be on both sides of the road. Park in designated parking lots.

All boundaries on the map are approximate. Call Willow Slough FWA at 219-285-2704 for more information.