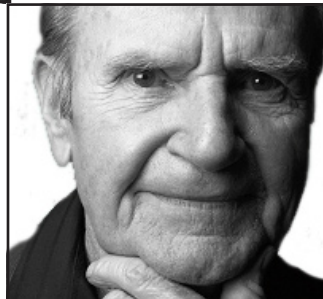
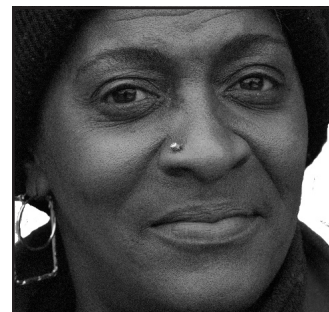


# INDIANA VOTER INFORMATION GUIDE



## How do I vote absentee?

As a registered voter in Indiana, you may vote absentee-in-person at your county election board office beginning 29 days before Election Day. You do not need to state a reason for voting early in person.

In order to vote absentee-by-mail, one of the following must apply:

1. You will be absent from the county on Election Day during the entire 12 hours that the polls are open (6:00 am to 6:00 pm).
2. You have a disability.
3. You are at least 65 years of age.
4. You will have official election duties outside of your precinct.
5. You are scheduled to work at your regular place of employment during the entire 12 hours that the polls are open.
6. You are prevented from voting because of a religious discipline or religious holiday during the entire 12 hours that the polls are open.
7. You are a participant in the state's address confidentiality program.

You must complete an absentee ballot application and return it to your county election board. The form can be found online at <http://www.in.gov/sos/elections/absentee.html>. If your application is approved, you will be mailed a ballot to submit by mail.

In order to vote absentee-by-traveling board, you must fit into criteria number 2 or 6 above. The ballot will be delivered to you by a bi-partisan absentee voter board who will be able to assist you with your ballot.



## STATE SENATOR LONNIE M. RANDOLPH

STATEHOUSE  
200 WEST WASHINGTON STREET  
INDIANAPOLIS, INDIANA 46204-2782  
800.382.9467  
[WWW.IN.GOV/S2](http://WWW.IN.GOV/S2)

make sure your  counts!



PROVIDED BY:  
STATE SENATOR LONNIE M. RANDOLPH  
DISTRICT 2

"NOBODY WILL EVER DEPRIVE THE AMERICAN PEOPLE OF THE RIGHT TO VOTE EXCEPT THE AMERICAN PEOPLE THEMSELVES . . .BY NOT VOTING."

-FRANKLIN D. ROOSEVELT  
32ND PRESIDENT OF THE UNITED STATES

# "THE FUTURE OF THIS REPUBLIC IS IN THE HANDS OF THE AMERICAN VOTER."

-DWIGHT D. EISENHOWER  
34TH PRESIDENT OF THE UNITED STATES



## The Right to

*voting is a fundamental constitutional right. Your participation in elections ensures that our society continues to uphold the ideals of a democratic government that represents all citizens.*

### Am I qualified to vote?

You are qualified to vote in an Indiana election, if you:

- are a U.S. citizen and a resident of Indiana; *and*
- are at least 18 years old on or before the next General Election, November 4, 2008; *and*
- are not currently in prison after being convicted of a crime; *and*
- reside in your precinct at least 30 days before the election in which you are voting; *and*
- apply to register to vote by October 6, 2008 and your application is approved.

### How do I register to vote?

To register to vote, you must complete a voter registration application and file it with your county registration office.

You must provide:

- full name
- residential address
- birth date
- a voter identification number (either your driver's license number or part of your social security number)
- if it is your first time to register, a copy of personal identification that shows your current name and address.

You may register to vote in person at your county voter registration office. You may also use a mail-in voter registration application found online at <http://www.in.gov/sos/elections/pdfs/50504.pdf> or at your local license branch, public library, or clerk-treasurer's office.

### What if I need to change my current registration?

If you have moved or changed your name, to protect your right to vote you must notify the county registration office where you currently live that you want to be registered at your new address or mail-in the form found online at <http://www.in.gov/sos/elections/pdfs/50504.pdf>. If you have moved to a new county, you should also contact the county where you previously lived to remove your name from their records.

## PHOTO ID NOW REQUIRED TO VOTE!

According to Indiana state law, a voter must provide a government-issued photo ID before casting a ballot. The ID must fit the following criteria:

- must display your photo; *and*
- your name on the ID must conform with your voter registration; *and*
- your ID must contain an expiration date and either still be current or have expired sometime after the date of the last General Election (November 7, 2006); *and*
- your ID must be issued by the State of Indiana or the US government.

Acceptable forms of ID include an Indiana driver's license, an Indiana ID card issued by the BMV for those who do not drive, a state university student ID card with a photo and acceptable expiration date, a passport, or a military ID.

### What do I need to obtain a driver license or ID card?

- One Primary Document, such as a birth certificate or passport
- One Secondary Document, such as a bank statement or W-2 form
- Proof of Social Security Number, such as your original Social Security card. For information about how to get a Social Security card, call 1-800-772-1213.
- Proof of Indiana residency, such as a current bill with name and address. A Primary or Secondary Document may be counted as Proof of Residency as long as the applicant's name and correct address are shown on the document.

- OR -

- Two Primary Documents
- Proof of Social Security Number
- Proof of Indiana Residency Document

Your local BMV license branch will be open the day before and on Election Day to ensure that voters have every opportunity to procure an ID card. It is very important to be prepared to vote with a valid and correct form of ID to ensure that your ballot will be counted. If you have further questions, please call the BMV at 317-233-6000, Option 2.

### Where do I vote?

If you are unsure about where your polling place is located, call your county election board or go online at [www.indianavoters.com](http://www.indianavoters.com). Instructions on how to cast your ballot will be provided at your polling place and explained to you by poll workers.

### What is a provisional ballot?

If a voter is unable to present ID at the polling location, they may cast a "provisional ballot," which is kept in a privacy envelope and separate from the regular ballots. A voter has 10 days following the election to provide proof of ID to the county clerk or county election board to have the sealed provisional ballot opened and counted. A voter may also have their provisional ballot counted by swearing by an affidavit that they are unable to afford an ID or that they have a religious objection to being photographed.

### Still have questions?

Please contact the following offices:

Lake County Clerk's Office  
(219) 755-3461  
Indiana Election Division  
800-662-4941

or online at [www.state.in.us/sos/elections](http://www.state.in.us/sos/elections)

