

**Document:** Errata, **Register Page Number:** 28 IR 1695

**Source:** March 1, 2005, Indiana Register, Volume 28, Number 6

**Disclaimer:** This document was created from the files used to produce the official CD-ROM Indiana Register.

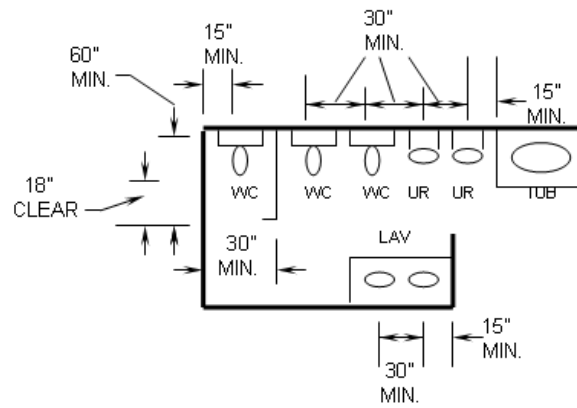
**TITLE 675 FIRE PREVENTION AND BUILDING  
SAFETY COMMISSION**

**LSA Document #02-115(AC)**

Under IC 4-22-2-38, corrects the following typographical, clerical, or spelling errors in LSA Document #02-115(F), printed at 26 IR 2875:

- (1) In 675 IAC 13-2.4-3(18), on page 3 of the original document (26 IR 2877), delete “INDIANA FULES GAS CODE (675 IAC 25)” and insert “INDIANA FUEL GAS CODE (675 IAC 25)”.
- (2) In 675 IAC 13-2.4-3(18), on page 4 of the original document (26 IR 2877), delete “INDIANA PLUMBING CODE (675 16)” and insert “INDIANA PLUMBING CODE (675 IAC 16)”.
- (3) In 675 IAC 13-2.4-15, on page 5 of the original document (26 IR 2879), in the section heading change the heading after “Section 308.2” to “Group I-1”. In the text change the reference after “Section 308.2” to “Group I-1”.
- (4) In 675 IAC 13-2.4-68, on page 16 of the original document (26 IR 2886), add end quotation mark after “See the Indiana Mechanical Code (675 IAC 18)”.
- (5) In 675 IAC 13-2.4-131, on page 94 of the original document (26 IR 2938), after “and”, delete “substitutue” and insert “substitute”.
- (6) In 675 IAC 13-2.4-174, on page 100 of the original document (26 IR 2942), after “for”, delete “Industrialzed” and insert “Industrialized”.
- (7) In 675 IAC 13-2.4-222, SECTION 2902, item 2., on page 101 of the original document (26 IR 2947), delete “Table 10-A” and insert “TABLE 1003.2.2.2”.
- (8) In 675 IAC 13-2.4-222, SECTION 2908, item 1., on page 102 of the original document (26 IR 2948), delete “Water closets, lavatories, and bidets: A water closet, lavatory, or bidet shall not be set closer than fifteen (15) inches (three hundred eighty-one (381) millimeters) from its center to any side wall, partition, vanity, or other obstruction, nor closer than thirty (30) inches (four hundred sixty-two (462) millimeters) clearance in front of the water closet or bidet to any wall, fixture, or door. Water closet compartments shall not be less than thirty (30) inches (seven hundred sixty-two (762) millimeters) wide and sixty (60) inches (one thousand five hundred twenty-four (1,524) millimeters) deep. There shall be at least eighteen (18) inches (four hundred fifty-seven (457) millimeters) clearance in front of a lavatory to any wall, fixture, or door. See Figure 29.” and insert “A water closet, lavatory, or bidet shall not be set closer than fifteen (15) inches (three hundred eighty-two (382) millimeters) from its center to any side wall, partition, vanity, or other obstruction, nor closer than thirty (30) inches (seven hundred sixty-two (762) millimeters) center-to-center between toilets or adjacent fixtures. There shall be at least eighteen (18) inches (four hundred fifty-seven (457) millimeters) clearance in front of the water closet or bidet to any wall, fixture, or door. Water closet compartments shall not be less than thirty (30) inches (seven hundred sixty-two (762) millimeters) wide and sixty (60) inches (one thousand five hundred twenty-four (1,524) millimeters) deep. There shall be at least eighteen (18) inches (four hundred fifty-seven (457) millimeters) clearance in front of a lavatory to any wall, fixture or door. See Figure 29.”.
- (9) In 675 IAC 13-2.4-222, SECTION 2908, on page 102 of the original document (26 IR 2948), before SECTION 2909, insert the following figure:

FIGURE 29  
FIXTURE CLEARANCES



*Filed with Secretary of State: September 17, 2004, 2:30 p.m.*

*Under IC 4-22-2-38(g)(2), this correction takes effect 45 days from the date and time filed with the Secretary of State.*