

Document: Emergency Rule, **Register Page Number:** 26 IR 1952

Source: March 1, 2003, Indiana Register, Volume 26, Number 6

Disclaimer: This document was created from the files used to produce the official CD-ROM Indiana Register . However, this document is unofficial.

TITLE 312 NATURAL RESOURCES COMMISSION

LSA Document #03-26(E)

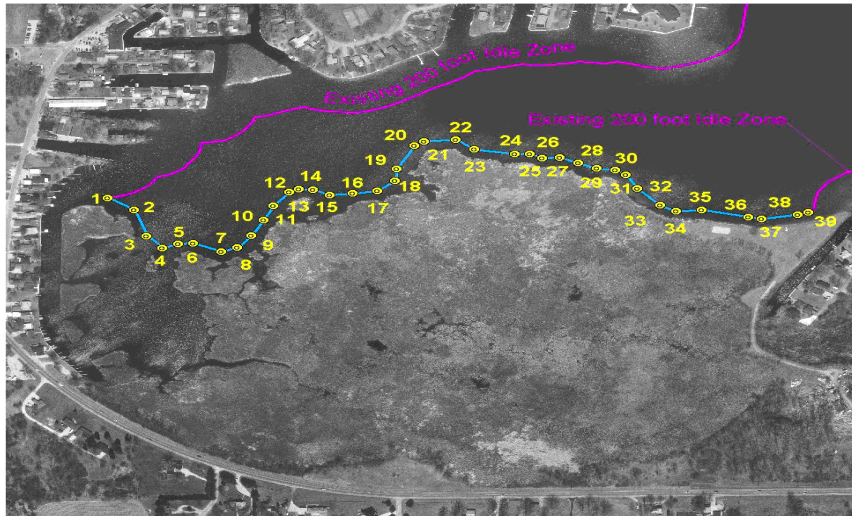
DIGEST

Temporarily modifies 312 IAC 5-6-6(b)(3) governing watercraft speed restrictions on Lake Wawasee within an area known as Conklin Bay. Modifications are made to depict the location of the idle speed zone consistent with the Indiana coordinate system. Effective February 15, 2003.

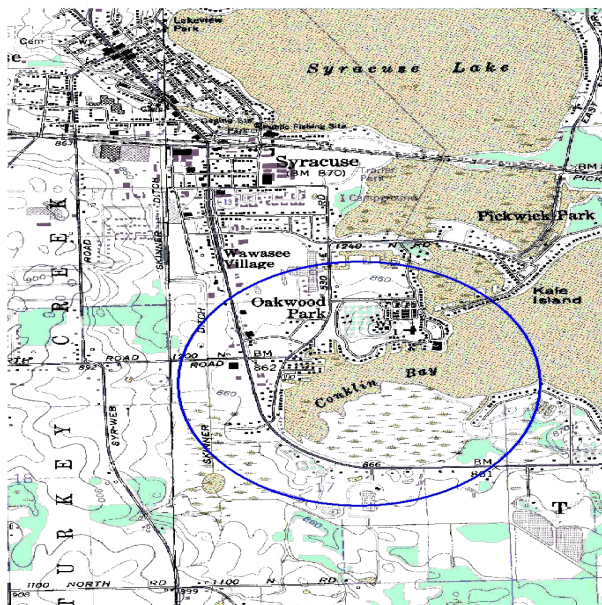
SECTION 1. (a) This document supersedes 312 IAC 5-6-6(b)(3) that provides a narrative description where a person must not operate a watercraft in excess idle speed on a portion of Lake Wawasee in Kosciusko County commonly known as Conklin Bay. The coordinates used in this SECTION apply the Indiana coordinate system of 1983, east zone, in United States Survey feet as defined in IC 32-19-1-1, here referred to as "SPC". The restricted watercraft zone is generally described as southeasterly, southerly, and southwesterly of buoys placed along a boundary in the central portion of the bay. The boundary:

- (1) begins at its westerly end with a buoy placed at SPC 2242788.82 north and SPC 307249.00 east;**
- (2) continues in a southeasterly, easterly, and northeasterly direction, including, but not limited to, buoys placed at:**
 - (A) SPC 2242718.09 north and SPC 307352.68 east;**
 - (B) SPC 2242565.10 north and SPC 307401.91 east;**
 - (C) SPC 2242497.48 north and SPC 307465.11 east;**
 - (D) SPC 2242521.75 north and SPC 307526.81 east;**
 - (E) SPC 2242525.13 north and SPC 307585.84 east;**
 - (F) SPC 2242474.80 north and SPC 307694.90 east;**
 - (G) SPC 2242498.23 north and SPC 307759.98 east;**
 - (H) SPC 2242567.77 north and SPC 307813.45 east;**
 - (I) SPC 2242659.47 north and SPC 307862.22 east;**
 - (J) SPC 2242742.59 north and SPC 307901.47 east;**
 - (K) SPC 2242822.16 north and SPC 307964.83 east;**
 - (L) SPC 2242840.80 north and SPC 308000.91 east;**
 - (M) SPC 2242834.77 north and SPC 308059.05 east;**
 - (N) SPC 2242805.66 north and SPC 308123.49 east;**
 - (O) SPC 2242814.46 north and SPC 308213.15 east;**
 - (P) SPC 2242828.98 north and SPC 308312.37 east;**
 - (Q) SPC 2242887.79 north and SPC 308379.96 east;**
 - (R) SPC 2242958.99 north and SPC 308387.17 east;**
 - (S) SPC 2243095.28 north and SPC 308458.38 east;**
 - (T) SPC 2243116.97 north and SPC 308495.63 east;**
 - (U) SPC 2243128.91 north and SPC 308619.23 east;**
 - (V) SPC 2243071.61 north and SPC 308693.71 east;**
 - (W) SPC 2243045.71 north and SPC 308854.70 east;**
 - (X) SPC 2243044.62 north and SPC 308912.74 east;**
 - (Y) SPC 2243022.03 north and SPC 308961.85 east;**
 - (Z) SPC 2243024.71 north and SPC 309030.45 east;**
 - (AA) SPC 2242991.47 north and SPC 309101.67 east;**
 - (BB) SPC 2242960.27 north and SPC 309176.01 east;**
 - (CC) SPC 2242952.81 north and SPC 309248.88 east;**
 - (DD) SPC 2242922.97 north and SPC 309291.55 east;**
 - (EE) SPC 2242842.09 north and SPC 309335.57 east;**

- (FF) SPC 2242744.94 north and SPC 309426.58 east;
 (GG) SPC 2242709.93 north and SPC 309487.98 east;
 (HH) SPC 2242717.16 north and SPC 309590.62 east;
 (II) SPC 2242677.69 north and SPC 309775.22 east;
 (JJ) SPC 2242666.43 north and SPC 309826.05 east; and
 (KK) SPC 2242691.59 north and SPC 309969.02 east; and
 (3) concludes with the easterly most buoy placed at SPC 2242703.63 north and SPC 310011.72 east.



Point ID	SPC East	SPC North
1	307249.00	2242788.82
2	307352.68	2242718.09
3	307401.91	2242565.10
4	307465.11	2242497.48
5	307526.81	2242521.75
6	307585.84	2242525.13
7	307694.90	2242474.80
8	307759.98	2242498.23
9	307813.45	2242567.77
10	307862.22	2242659.47
11	307901.47	2242742.59
12	307964.83	2242822.16
13	308000.91	2242840.80
14	308059.05	2242834.77
15	308123.49	2242805.66
16	308213.15	2242814.46
17	308312.37	2242828.98
18	308379.96	2242887.79
19	308387.17	2242958.99
20	308458.38	2243095.28
21	308495.63	2243116.97
22	308619.23	2243128.91
23	308693.71	2243071.61
24	308854.70	2243045.71
25	308912.74	2243044.62
26	308961.85	2243022.03
27	309030.45	2243024.71
28	309101.67	2242991.47
29	309176.01	2242960.27
30	309248.88	2242952.81
31	309291.55	2242922.97
32	309335.57	2242842.09
33	309426.58	2242744.94
34	309487.98	2242709.93
35	309590.62	2242717.16
36	309775.22	2242677.69
37	309826.05	2242666.43
38	309969.02	2242691.59
39	310011.72	2242703.63

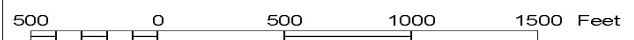


Vicinity Map

North American Datum of 1983
 Indiana State Plane Coordinates
 East Zone
 U.S. Survey Feet

State of Indiana
 Department of Natural Resources

Lake Wawasee
 Conklin Bay Idle Zone



SECTION 2. SECTION 1 of this document expires January 1, 2004.

Filed with Secretary of State: January 28, 2003, 2:08 p.m.