

PROJECT	DESIGNATION
0710982	0710982
CONTRACT	
R-XXX	

PROJECT EQUATIONS

- | | |
|---|---|
| EQN. :
① P.O.T. Sta. 18+680.852 "P" (Back) =
P.C. Sta. 18+692.287 "P" (Ahead) | EQN. :
⑦ P.O.T. Sta. 30+488.974 "A" (Back) (1928) =
P.O.T. Sta. 30+480.000 "AA" (Ahead) 0.606 m Lt. |
| EQN. :
② Sta. 18+914.608 "P" (Back) =
Sta. 18+914.608 "S" (Ahead) | EQN. :
⑧ P.O.T. Sta. 30+480.000 "AA" (Back) (1951) =
P.O.T. Sta. 30+488.974 "A" (Ahead) 0.606 m Lt. (Ahead) |
| EQN. :
③ P.T. Sta. 19+614.614 "S" (Back) =
P.O.T. Sta. 19+612.691 "A" (Ahead) | EQN. :
⑨ P.O.T. Sta. 32+791.120 "AA" (Back) (1951) =
P.O.T. Sta. 0+121.920 "PR1" (Ahead) (1951) |
| EQN. :
④ P.T. Sta. 20+237.879 "A" (Back) =
P.T. Sta. 20+238.989 "A" (Ahead) | EQN. :
⑩ P.T. Sta. 1+335.266 "PR1" (Back) (1951) =
P.T. Sta. 1+337.051 "A" (Ahead) (1951) |
| EQN. :
⑤ P.C. Sta. 21+242.423 "A" (Back) (1928) =
P.C. #993 Sta. 21+242.423 "S- Revised" (Ahead) (1957) | EQN. :
⑪ P.O.T. Sta. 1+675.211 "A" (Back) =
P.C. Sta. 1+675.211 "BB" (Ahead) |
| EQN. :
⑥ P.C.C. Sta. 21+609.612 "S- Revised" (Back) (1957) =
P.C.C. Sta. 21+609.612 "A" (Ahead) (1928) | EQN. :
⑫ P.O.C. Sta. 3+299.037 "BB" (Back) (1951) =
P.C. Sta. 3+298.363 "W" (Ahead) (1951) |

INDIANA
DEPARTMENT OF
TRANSPORTATION

ROAD PLANS

PROJECT NO. 0710982 P.E.
PROJECT NO. XXXXXX R/W
PROJECT NO. XXXXXX CONST.

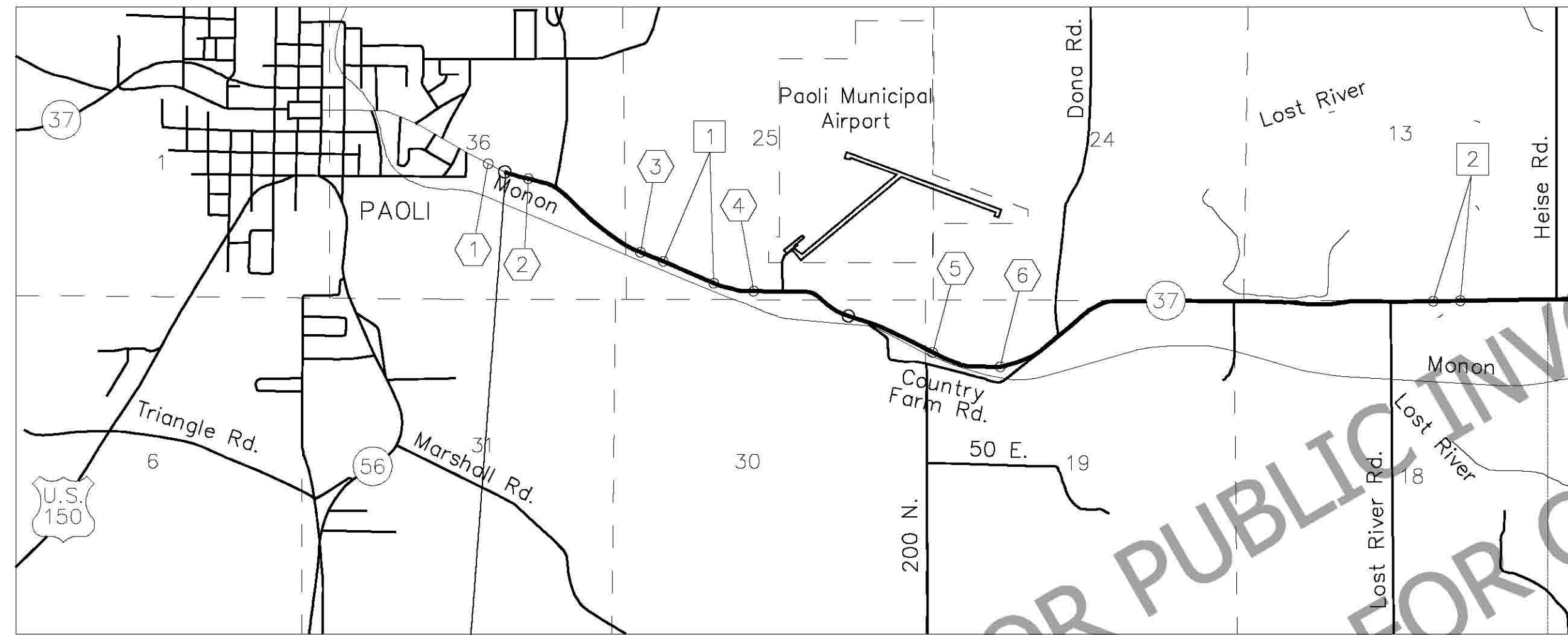
S.R. 37 FROM RP 56+01 TO 66+96

PROJECT DESCRIPTION: PAVEMENT REHABILITATION (3R)
S.R. 37 FROM 1.02 MILE (1.64km) N. OF JUNCTION U.S. 150/
S.R. 56 TO 0.52 MILE (0.84 km) S. OF JCT. W/S.R.60

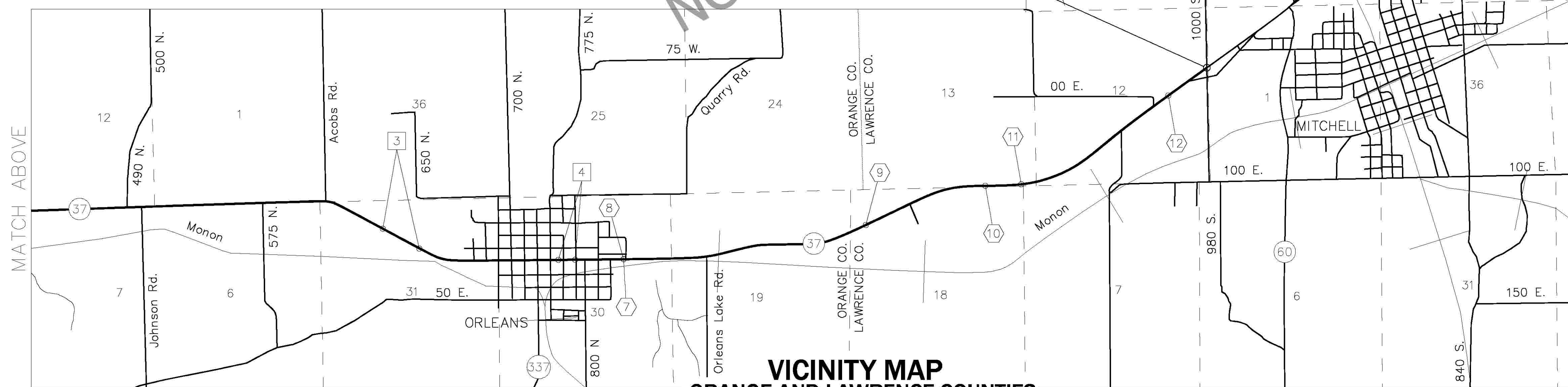
GROSS LENGTH: 17.517 km
NET LENGTH: 16.594 km
MAX. GRADE: 7.11% (URBAN)
2.76% (RURAL)

PROJECT LATITUDE: 38°39'42"
PROJECT LONGITUDE: 86°27'10"

SCALE: 1:24000



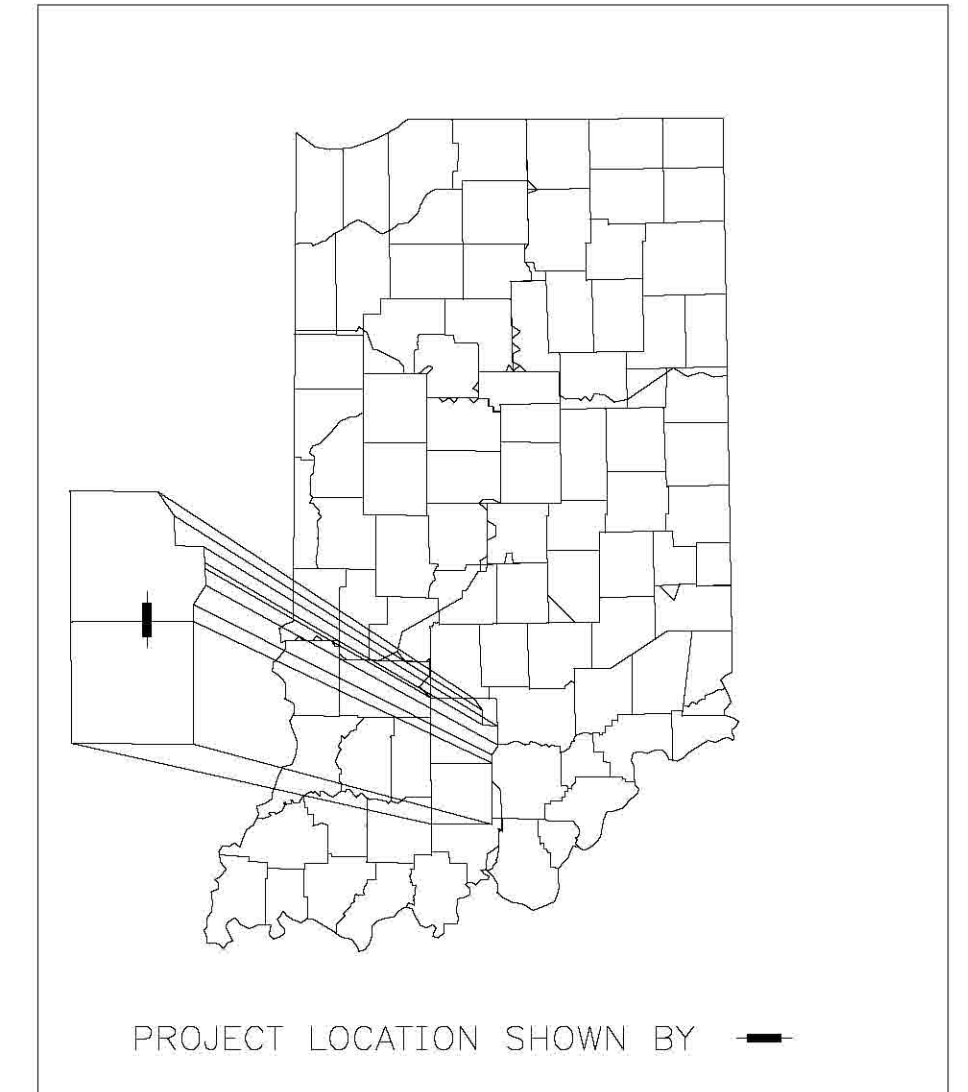
BEGIN PROJECT 0710982 P.O.T. STA. 18+871.000 LINE "P"
END PROJECT 0710982 P.O.T. STA. 3+740.000 LINE "W"



VICINITY MAP
ORANGE AND LAWRENCE COUNTIES

TRAFFIC DATA	
A.A.D.T. (2010)	10,100 V.P.D.
A.A.D.T. (2030)	15,500 V.P.D.
D.H.V. (2030)	3,086 V.P.H.
DIRECTIONAL DISTRIBUTION	
	50%
TRUCKS	6% D.H.V.
	6% A.A.D.T.
DESIGN DATA	
DESIGN SPEED	VARIABLE FROM 50 TO 90 K.P.H.
PROJECT DESIGN CRITERIA	3R (NON-FREEWAY)
FUNCTIONAL CLASSIFICATION	RURAL PRINCIPAL ARTERIAL
RURAL/URBAN	RURAL (PORTIONS WITH URBAN CHARACTERISTICS)
TERRAIN	ROLLING AND LEVEL
ACCESS CONTROL	NONE

FOR S-LINES SEE NEXT SHEET



PROJECT LOCATION SHOWN BY

NOTE:

THIS PLAN SET REPRESENTS A DESIGN HEARING SUBMITTAL FOR SEGMENTS A THROUGH D.

- SEGMENT A – STA.18+871.000 "P" TO STA.19+800 "A"
- SEGMENT B – STA.20+061.878 "A" TO STA.28+115 "A"
- SEGMENT C – STA.28+115.000 "A" TO STA.31+600 "AA"
- SEGMENT D – STA.31+600.000 "P" TO STA.03+298 "BB"

PROJECT EXCEPTIONS

- ① Paving Exception for New S.R. 237 Des. No.9804670 Sta. 19+800.000 to Sta. 20+061.882
- ② Paving Exception for Bridge from Sta. 23+977.000 to Sta. 24+119.000
- ③ Paving Exception for Martin Street Sta. 28+115.000 to Sta. 28+506.000
- ④ Paving Exception for Town of Orleans Sta. 29+874.532 to Sta. 30+032.573

[INDIANA DEPARTMENT OF TRANSPORTATION STANDARD SPECIFICATIONS DATED 2010 TO BE USED WITH THESE PLANS]

R.W. ARMSTRONG.
123 Northwest 4th St.
Suite 519
Evansville, IN 47708
PH 812.962.0683 // FX 812.962.0690
rWArmstrong.com

DESIGN HEARING

FEDERAL HIGHWAY ADMINISTRATION
U.S. DEPT. OF TRANSPORTATION
APPROVED: _____
DATE _____

DIVISION ADMINISTRATOR

PLANS PREPARED BY: R.W. ARMSTRONG & ASSOCIATES, INC
PHONE NUMBER _____
CERTIFIED BY: _____ DATE _____
APPROVED FOR LETTING: _____ DATE _____
CHIEF, DIVISION OF DESIGN

BRIDGE FILE	
DESIGNATION	
0710982	
SHEETS	
1	of
PROJECT	
0710982	