



Where is the study being conducted?

Boundaries of study area:

North

10th Street

South

Hanna Avenue

East

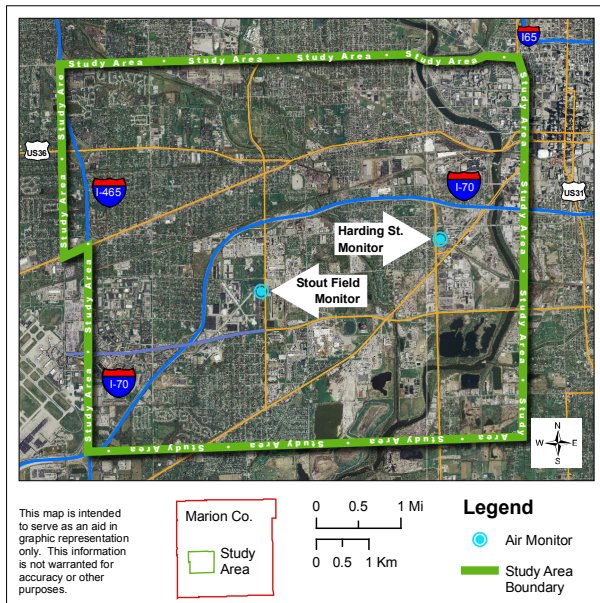
Bluff Road

West

High School Road

Monitoring locations:

- 1321 S. Harding Street
- Stout Field National Guard Armory, 1802 S. Holt Road



Who can I contact if I have questions about the study?

Indiana Department of Environmental Management

- Brian Wolff _____
(317) 234-3499 or bwolff@idem.IN.gov

Indiana Department of
Environmental Management

Office of Air Quality

www.idem.IN.gov



Printed on 50% recycled paper with a minimum of 15% post-consumer recycled.



LA 541- BE 02/09 i H

Southwest Indianapolis



Indiana Department of Environmental Management



Neighborhood Air Toxics Study

Project Summary
March 2009

www.idem.IN.gov/programs/air/workgroups/swindyairtox

Air Toxics Study

What is the Southwest Indianapolis Air Toxics Study?

It is a two-year study of air quality in the southwestern Indianapolis area. The study is being done to evaluate air quality within the area and determine what steps, if any, are necessary to adequately protect public health.

Who is Participating in the Study?

- Indiana Department of Environmental Management (IDEM)
- Area residents and community leaders
- Community groups and local businesses
- City of Indianapolis
- U.S. Environmental Protection Agency (U.S. EPA)

Why is this study being done?

U.S. EPA studies have shown that this area may experience concentrations of air toxics above average levels. It is important to note that all areas of the country are exposed to air toxics concentrations. It is the level of concentration and the length of exposure that determines how public health is affected. This study is designed to answer two questions:

- Is the air quality within the study area adequately protective of public health?
- What can be done to enhance air quality within the study area?

What is the schedule for this study?

The study started in the fall of 2006. Air quality samples were collected from October 2006 through September 2008 and the results of the study are due to be released in mid-2009.

How is the Study being Implemented?

IDEM is evaluating the air quality in three ways:

- **Monitoring:** IDEM collected samples of the air at two monitor site locations once every six days from October 2006 to October 2008. In all, IDEM recorded the levels of 80 different pollutants in the area over a two year period.

Air toxics monitor



- **Emissions Inventory Evaluation:** IDEM contacted 319 area businesses and collected information about what toxics they released into the air, where the release occurred, and what processes resulted in the release.
- **Modeling:** The information gathered from local business and industry will be put into a computerized tool referred to as a "model". The model will then estimate what the anticipated concentrations of air toxics would be at unmonitored locations within the study area.

Once these three steps are complete, IDEM will evaluate the information and determine whether the air quality is adequately protective of public health and what steps, in any, are needed to enhance air quality. The diagram below shows how the different components of the study work together to produce the results.

Basic Process for Air Toxics Study



Technical Experts for This Study

Technical Advisory Group

This 11-member panel is comprised of outside technical experts who review the technical aspects of the study and provide recommendations to IDEM. The Technical Advisory Group was formed when the study began in the fall of 2006 and meets several times a year. All meeting information is available on the IDEM Web site at www.idem.IN.gov.

Community Assistance with the Study

Public Advisory Group

This eight-member panel is comprised of community leaders and residents. This group advises IDEM about the best way to communicate important study information to the community.

Neighborhood Meetings

IDEM has been regularly attending neighborhood meetings since the beginning of the study. This is one way IDEM keeps the community informed about the study's progress. For a list of neighborhood meetings IDEM attends or if you are interested in having an IDEM staff member come to your neighborhood or organization meeting, please contact:

- Amy Bukarica _____
(317) 233-1179 or abukarica@idem.IN.gov.

How can I learn about the study results once they are released?

The study results are due to be released in mid-2009 and an official study report will be available at that time. In addition, IDEM will be taking information to the community by:

- giving presentations at neighborhood meetings;
- hosting an information session;
- distributing information summaries through community organizations; and,
- publishing information to local newsletters and the IDEM Web site: www.idem.IN.gov.