



DIVISION OF FAMILY RESOURCES

Wells County Monthly Management Report August 2017

State of Indiana

Eric Holcomb
Governor

Family and Social Services Administration

Jennifer Walthall, M.D.
Secretary

Division of Family Resources

Adrienne Shields
Director

For questions regarding data on this report contact:
office.Communications@fssa.IN.gov



State of Indiana

Published September 2017



DIVISION OF FAMILY RESOURCES

Monthly Management Report

Reporting Month: August 2017

Location: Wells County

TEMPORARY ASSISTANCE FOR NEEDY FAMILIES (TANF)

Child-Only and One-Parent Families	Aug 31, 2017	July 2017	August 2016	Annual Change
Number of families receiving TANF Grants	13	15	13	0.00%
Total number of grant recipients	19	26	29	-34.48%
Number of adult grant recipients	0	0	2	-100.00%
Number of child grant recipients	19	26	27	-29.63%
Total payments	\$2,155	\$2,865	\$2,286	-5.73%
Average payment per case	\$165.77	\$191.00	\$175.85	-5.73%
Average payment per recipient	\$113.42	\$110.19	\$78.83	43.88%
Number of cases with benefits reduced to zero	1	0	0	0%
Number of recipients with benefits reduced to zero	6	0	0	0%
Number of adult recipients with benefit reduced to zero	1	0	0	0%
Number of child recipients with benefit reduced to zero	5	0	0	0%

Two-Parent Families	Aug 31, 2017	July 2017	August 2016	Annual Change
Number of families receiving TANF Grants	1	1	1	0.00%
Total number of grant recipients	5	5	5	0.00%
Number of adult grant recipients	2	2	2	0.00%
Number of child grant recipients	3	3	3	0.00%
Total payments	\$256	\$405	\$405	-36.79%
Average payment per case	\$256.00	\$405.00	\$405.00	-36.79%
Average payment per recipient	\$51.20	\$81.00	\$81.00	-36.79%
Number of cases with benefits reduced to zero	0	0	0	0%
Number of recipients with benefits reduced to zero	0	0	0	0%
Number of adult recipients with benefit reduced to zero	0	0	0	0%
Number of child recipients with benefit reduced to zero	0	0	0	0%

Note:

All data July 2014 and following will be broken out according to the new DFR region structure effective July 1 2014.

Source:



DIVISION OF FAMILY RESOURCES

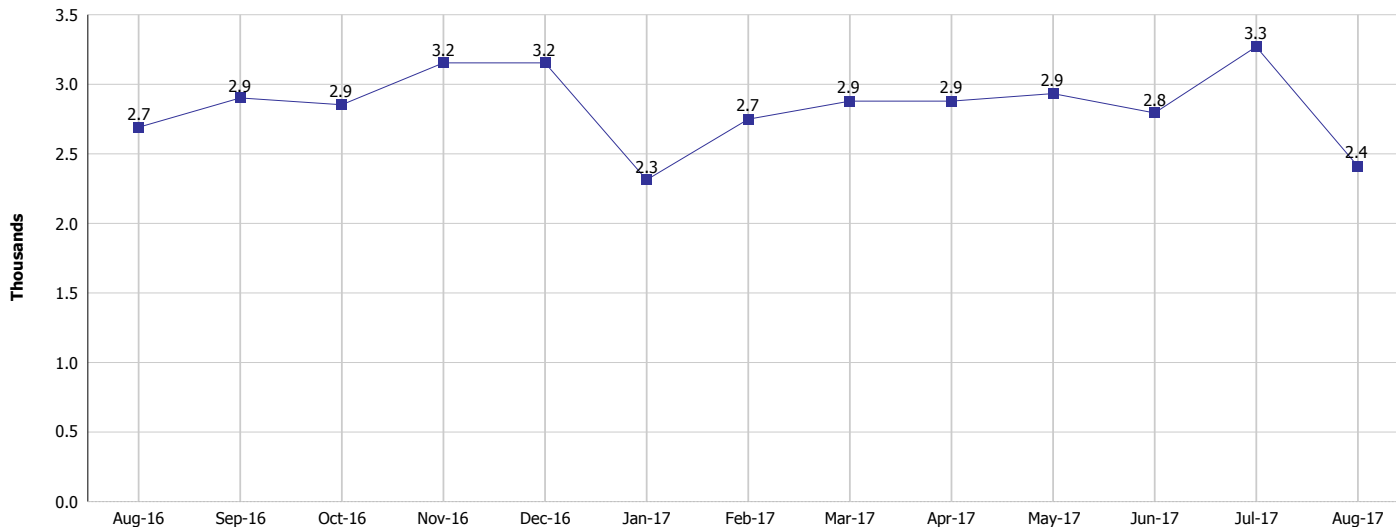
Monthly Management Report

Reporting Month: August 2017

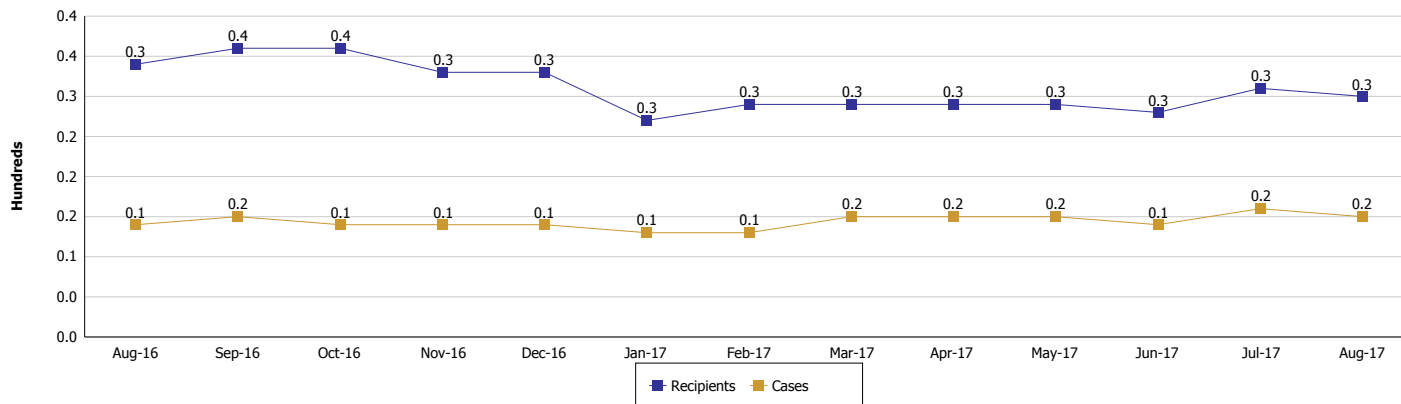
Location: Wells County

TEMPORARY ASSISTANCE FOR NEEDY FAMILIES (TANF)

TANF Regular And TANF Two-Parent Cash Assistance



TANF Cases and Recipients (TANF Regular and TANF Two-Parent)



Note:

All data July 2014 and following will be broken out according to the new DFR region structure effective July 1 2014.



DIVISION OF FAMILY RESOURCES

Monthly Management Report

Reporting Month: August 2017

Location: Wells County

SUPPLEMENTAL NUTRITION ASSISTANCE PROGRAM (SNAP)

	August 2017	July 2017	August 2016	Annual Change
Total issuance	\$155,843	\$155,962	\$183,587	-15.11%
Number of households receiving SNAP benefits	658	656	758	-13.19%
Number of recipients	1,493	1,485	1,725	-13.45%
Average issuance per household	\$236.84	\$237.75	\$242.2	-2.21%
Average issuance per recipient	\$104.38	\$105.02	\$106.43	-1.93%

Note:

All data July 2014 and following will be broken out according to the new DFR region structure effective July 1 2014.



DIVISION OF FAMILY RESOURCES

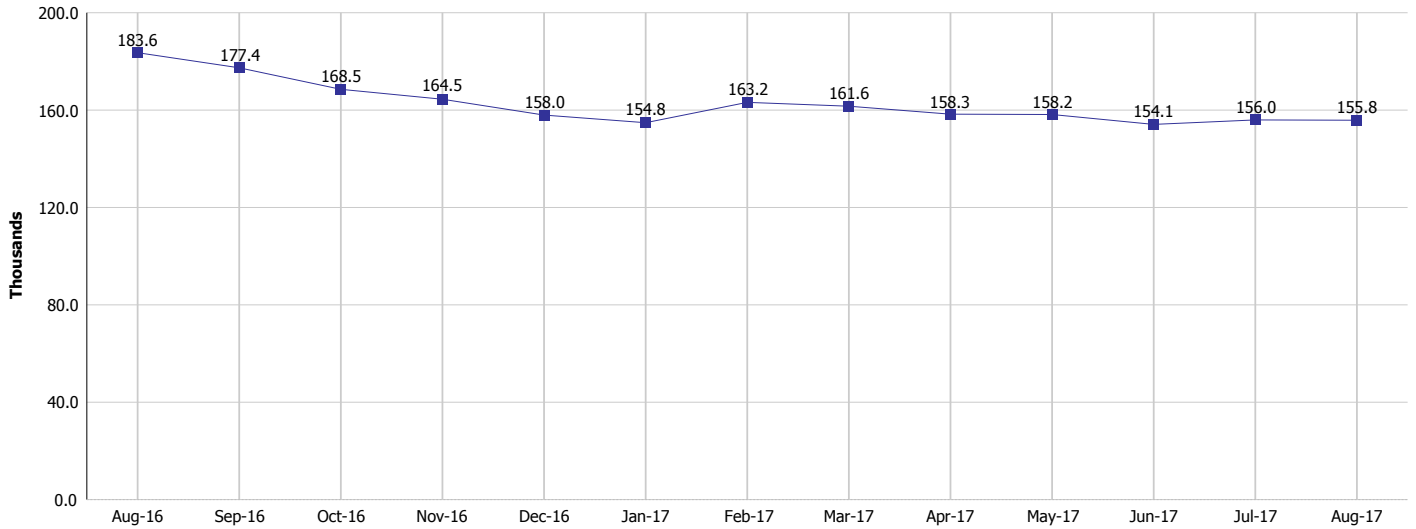
Monthly Management Report

Reporting Month: August 2017

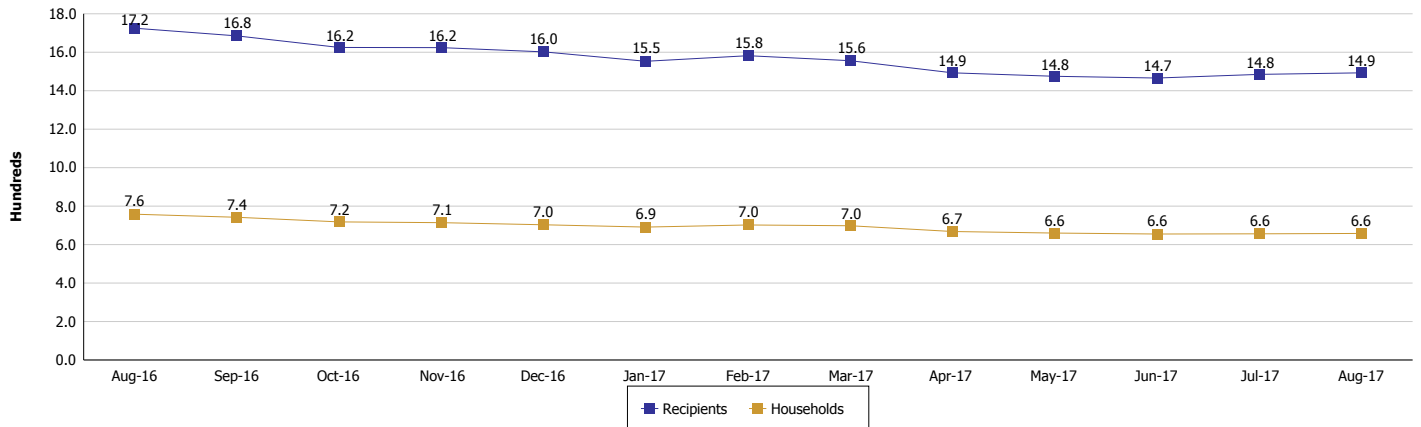
Location: Wells County

SUPPLEMENTAL NUTRITION ASSISTANCE PROGRAM (SNAP)

SNAP Issuance



SNAP Households and Recipients



Note:

All data July 2014 and following will be broken out according to the new DFR region structure effective July 1 2014.



DIVISION OF FAMILY RESOURCES

Monthly Management Report

Reporting Month: August 2017

Location: Wells County

HIP 2.0 and SNAP

	August 2017	July 2017	August 2016	Annual Change
Total HIP 2.0 Members	1,230	1,216	1,161	5.94%
HIP Members also SNAP Recipients	386	359	414	-6.76%
Percentage HIP Members SNAP Recipients	31.4%	29.5%	35.7%	2.64%
HIP Members SNAP ABAWDs	17	9	16	6.25%
Percentage HIP Members SNAP ABAWDs	1.4%	0.7%	1.4%	2.64%

Note:

All data July 2014 and following will be broken out according to the new DFR region structure effective July 1 2014.



DIVISION OF FAMILY RESOURCES

Monthly Management Report

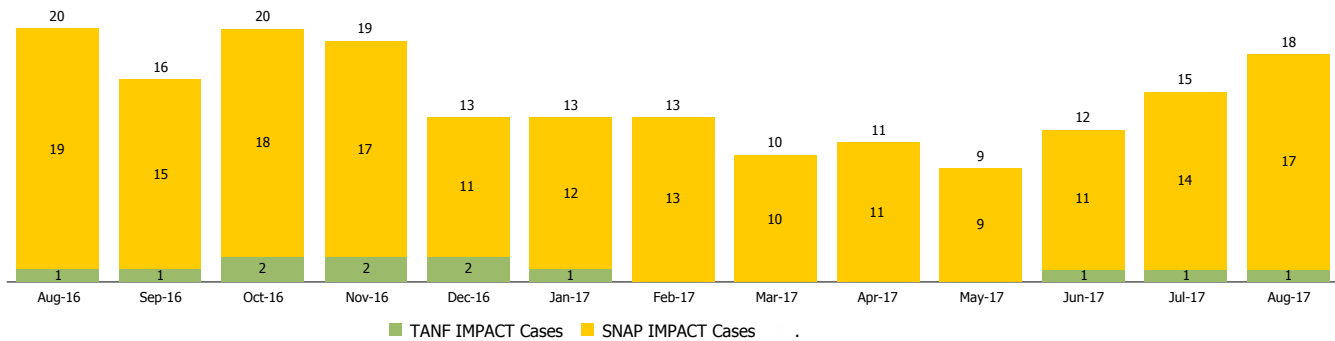
Reporting Month: August 2017

Location: Wells County

INDIANA MANPOWER PLACEMENT AND COMPREHENSIVE TRAINING (IMPACT)

	August 2017	July 2017	August 2016	Annual Change
Number of IMPACT cases	18	15	20	-10.00%
Number of TANF IMPACT adults	1	1	1	0.00%
Number of SNAP IMPACT Cases	17	14	19	-10.53%
Total number of adults employed	4	0	9	-55.56%
Number of TANF IMPACT adults newly employed (within past 30 days)	0	0	0	
Number of SNAP IMPACT adults employed	4	0	9	-55.56%
Total number of adults ineligible due to employment	15	12	19	-21.05%
Number of TANF adults ineligible due to employment	0	0	0	
Number of SNAP adults ineligible due to employment	15	12	19	-21.05%

IMPACT Caseloads
(SNAP, TANF, Total Caseload)



Note:

All data July 2014 and following will be broken out according to the new DFR region structure effective July 1 2014.