



DIVISION OF FAMILY RESOURCES

Wabash County Monthly Management Report May 2017

State of Indiana

Eric Holcomb
Governor

Family and Social Services Administration

Jennifer Walthall, M.D.
Secretary

Division of Family Resources

Adrienne Shields
Director

For questions regarding data on this report contact:
office.Communications@fssa.IN.gov



State of Indiana

Published June 2017



DIVISION OF FAMILY RESOURCES

Monthly Management Report

Reporting Month: May 2017

Location: Wabash County

TEMPORARY ASSISTANCE FOR NEEDY FAMILIES (TANF)

Child-Only and One-Parent Families	May 31, 2017	April 2017	May 2016	Annual Change
Number of families receiving TANF Grants	34	36	41	-17.07%
Total number of grant recipients	58	67	71	-18.31%
Number of adult grant recipients	6	7	6	0.00%
Number of child grant recipients	52	60	65	-20.00%
Total payments	\$5,373	\$6,242	\$7,018	-23.44%
Average payment per case	\$158.03	\$173.39	\$171.17	-7.68%
Average payment per recipient	\$92.64	\$93.16	\$98.85	-6.28%
Number of cases with benefits reduced to zero	0	0	0	0%
Number of recipients with benefits reduced to zero	0	0	0	0%
Number of adult recipients with benefit reduced to zero	0	0	0	0%
Number of child recipients with benefit reduced to zero	0	0	0	0%

Two-Parent Families	May 31, 2017	April 2017	May 2016	Annual Change
Number of families receiving TANF Grants	0	0	0	0%
Total number of grant recipients	0	0	0	0%
Number of adult grant recipients	0	0	0	0%
Number of child grant recipients	0	0	0	0%
Total payments	\$0	\$0	\$0	0%
Average payment per case	\$0.00	\$0.00	\$0.00	0.00%
Average payment per recipient	\$0.00	\$0.00	\$0.00	0.00%
Number of cases with benefits reduced to zero	0	0	0	0%
Number of recipients with benefits reduced to zero	0	0	0	0%
Number of adult recipients with benefit reduced to zero	0	0	0	0%
Number of child recipients with benefit reduced to zero	0	0	0	0%

Note:

All data July 2014 and following will be broken out according to the new DFR region structure effective July 1 2014.

Source:



DIVISION OF FAMILY RESOURCES

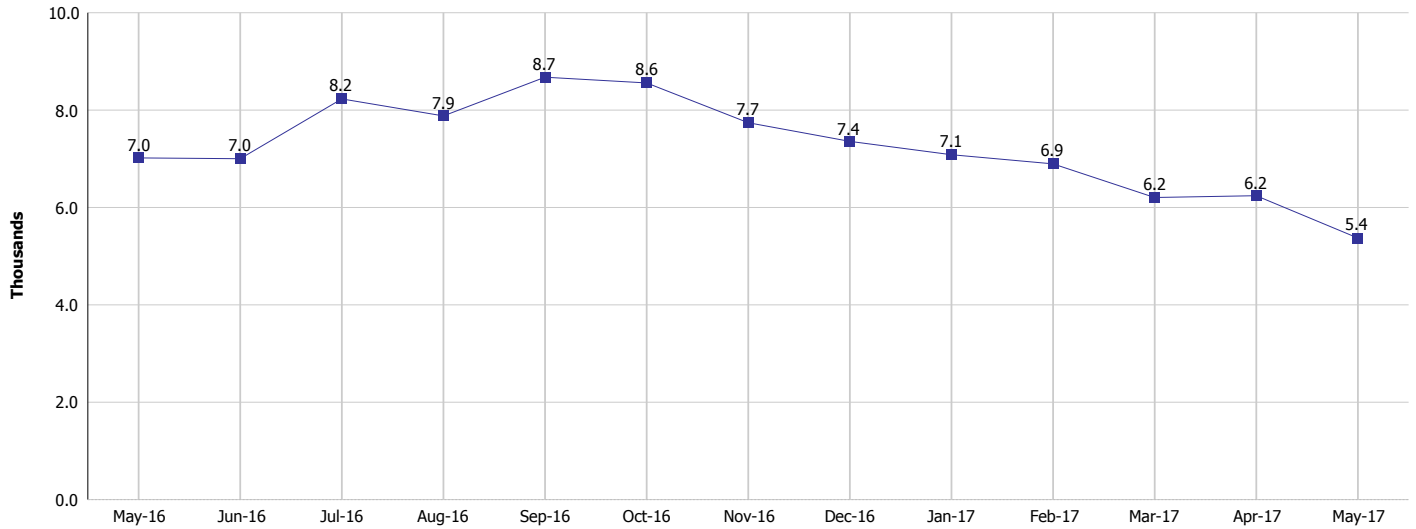
Monthly Management Report

Reporting Month: May 2017

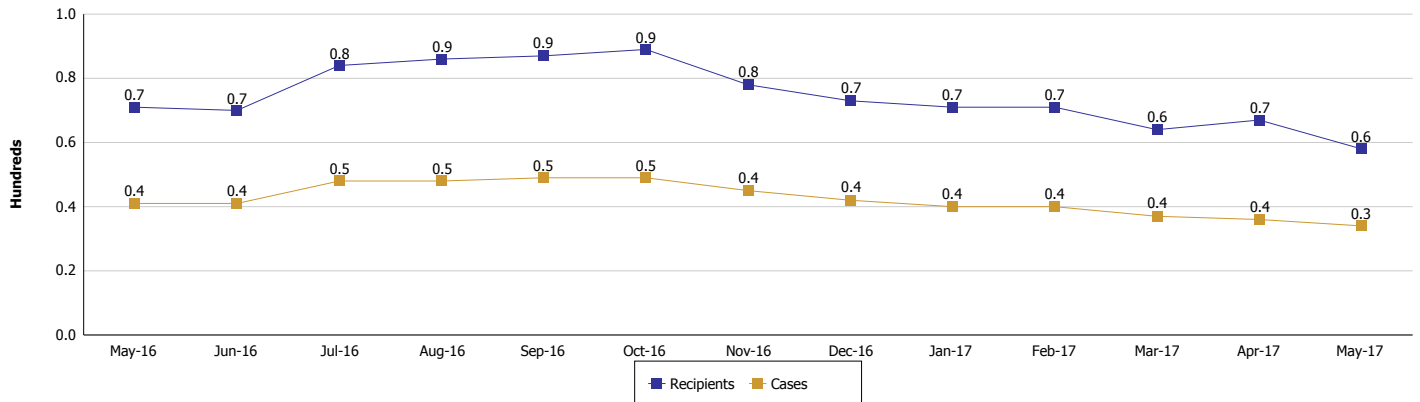
Location: Wabash County

TEMPORARY ASSISTANCE FOR NEEDY FAMILIES (TANF)

TANF Regular And TANF Two-Parent Cash Assistance



TANF Cases and Recipients (TANF Regular and TANF Two-Parent)



Note:

All data July 2014 and following will be broken out according to the new DFR region structure effective July 1 2014.



DIVISION OF FAMILY RESOURCES

Monthly Management Report

Reporting Month: May 2017

Location: Wabash County

SUPPLEMENTAL NUTRITION ASSISTANCE PROGRAM (SNAP)

	May 2017	April 2017	May 2016	Annual Change
Total issuance	\$288,664	\$287,563	\$318,906	-9.48%
Number of households receiving SNAP benefits	1,166	1,176	1,239	-5.89%
Number of recipients	2,549	2,591	2,772	-8.04%
Average issuance per household	\$247.57	\$244.53	\$257.39	-3.82%
Average issuance per recipient	\$113.25	\$110.99	\$115.05	-1.56%

Note:

All data July 2014 and following will be broken out according to the new DFR region structure effective July 1 2014.



DIVISION OF FAMILY RESOURCES

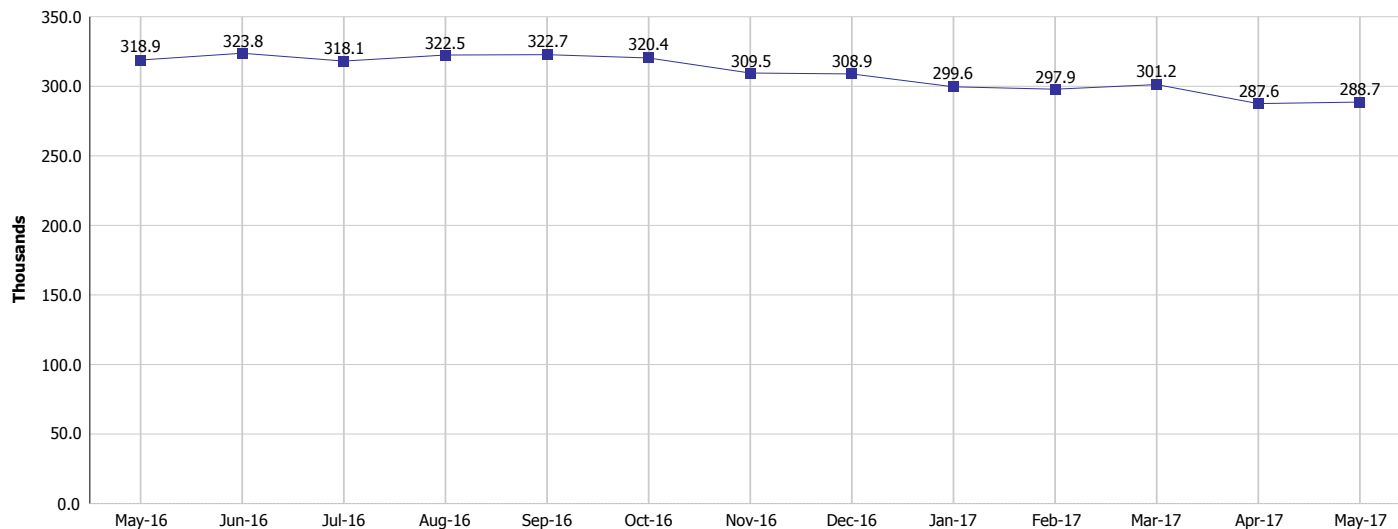
Monthly Management Report

Reporting Month: May 2017

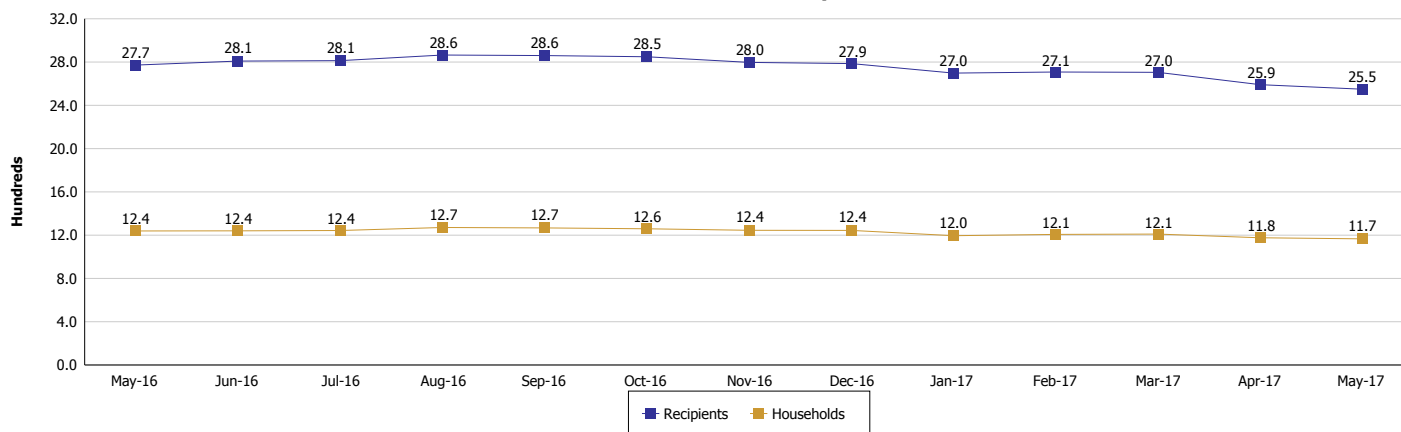
Location: Wabash County

SUPPLEMENTAL NUTRITION ASSISTANCE PROGRAM (SNAP)

SNAP Issuance



SNAP Households and Recipients



Note:

All data July 2014 and following will be broken out according to the new DFR region structure effective July 1 2014.



DIVISION OF FAMILY RESOURCES

Monthly Management Report

Reporting Month: May 2017

Location: Wabash County

HIP 2.0 and SNAP

	May 2017	April 2017	May 2016	Annual Change
Total HIP 2.0 Members	1,784	1,771	1,633	9.25%
HIP Members also SNAP Recipients	602	616	644	-6.52%
Percentage HIP Members SNAP Recipients	33.7%	34.8%	39.4%	4.74%
HIP Members SNAP ABAWDs	24	32	24	0.00%
Percentage HIP Members SNAP ABAWDs	1.3%	1.8%	1.5%	4.74%

Note:

All data July 2014 and following will be broken out according to the new DFR region structure effective July 1 2014.



DIVISION OF FAMILY RESOURCES

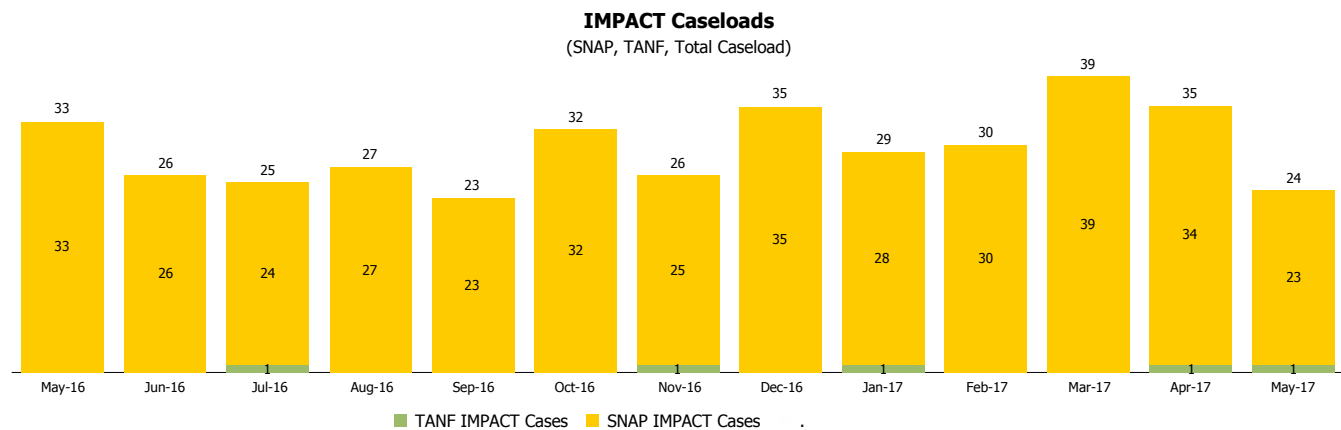
Monthly Management Report

Reporting Month: May 2017

Location: Wabash County

INDIANA MANPOWER PLACEMENT AND COMPREHENSIVE TRAINING (IMPACT)

	May 2017	April 2017	May 2016	Annual Change
Number of IMPACT cases	24	35	33	-27.27%
Number of TANF IMPACT adults	1	1	0	
Number of SNAP IMPACT Cases	23	34	33	-30.30%
Total number of adults employed	7	10	11	-36.36%
Number of TANF IMPACT adults newly employed (within past 30 days)	1	1	1	0.00%
Number of SNAP IMPACT adults employed	6	9	10	-40.00%
Total number of adults ineligible due to employment	23	25	27	-14.81%
Number of TANF adults ineligible due to employment	0	0	0	
Number of SNAP adults ineligible due to employment	23	25	27	-14.81%



Note:

All data July 2014 and following will be broken out according to the new DFR region structure effective July 1 2014.