



DIVISION OF FAMILY RESOURCES

Vanderburgh County Monthly Management Report April 2017

State of Indiana

Eric Holcomb
Governor

Family and Social Services Administration

Jennifer Walthall, M.D.
Secretary

Division of Family Resources

Adrienne Shields
Director

For questions regarding data on this report contact:
office.Communications@fssa.IN.gov



State of Indiana

Published May 2017



DIVISION OF FAMILY RESOURCES

Monthly Management Report

Reporting Month: April 2017

Location: Vanderburgh County

TEMPORARY ASSISTANCE FOR NEEDY FAMILIES (TANF)

Child-Only and One-Parent Families	Apr 30, 2017	March 2017	April 2016	Annual Change
Number of families receiving TANF Grants	231	237	252	-8.33%
Total number of grant recipients	494	524	529	-6.62%
Number of adult grant recipients	49	55	55	-10.91%
Number of child grant recipients	445	469	474	-6.12%
Total payments	\$45,510	\$54,727	\$47,708	-4.61%
Average payment per case	\$197.01	\$230.92	\$189.32	4.06%
Average payment per recipient	\$92.13	\$104.44	\$90.19	2.15%
Number of cases with benefits reduced to zero	4	1	3	33.33%
Number of recipients with benefits reduced to zero	9	3	5	80.00%
Number of adult recipients with benefit reduced to zero	2	1	1	100.00%
Number of child recipients with benefit reduced to zero	7	2	4	75.00%

Two-Parent Families	Apr 30, 2017	March 2017	April 2016	Annual Change
Number of families receiving TANF Grants	10	11	10	0.00%
Total number of grant recipients	34	39	36	-5.56%
Number of adult grant recipients	10	12	9	11.11%
Number of child grant recipients	24	27	27	-11.11%
Total payments	\$2,357	\$2,321	\$2,115	11.44%
Average payment per case	\$235.70	\$211.00	\$211.50	11.44%
Average payment per recipient	\$69.32	\$59.51	\$58.75	18.00%
Number of cases with benefits reduced to zero	0	0	0	0%
Number of recipients with benefits reduced to zero	0	0	0	0%
Number of adult recipients with benefit reduced to zero	0	0	0	0%
Number of child recipients with benefit reduced to zero	0	0	0	0%

Note:

All data July 2014 and following will be broken out according to the new DFR region structure effective July 1 2014.

Source:



DIVISION OF FAMILY RESOURCES

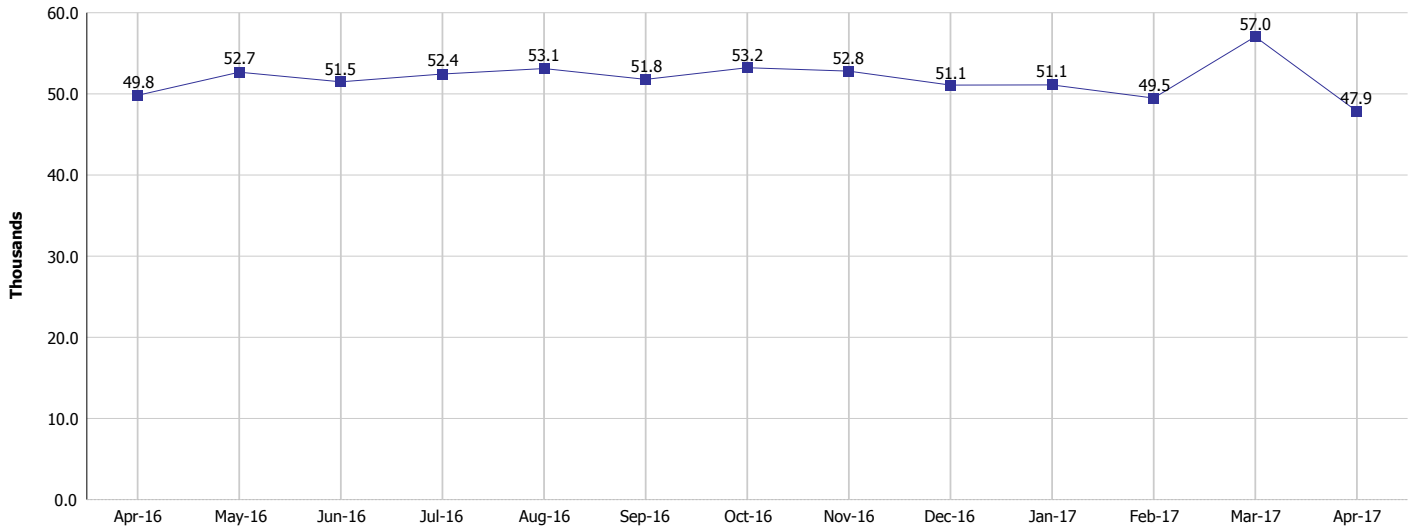
Monthly Management Report

Reporting Month: April 2017

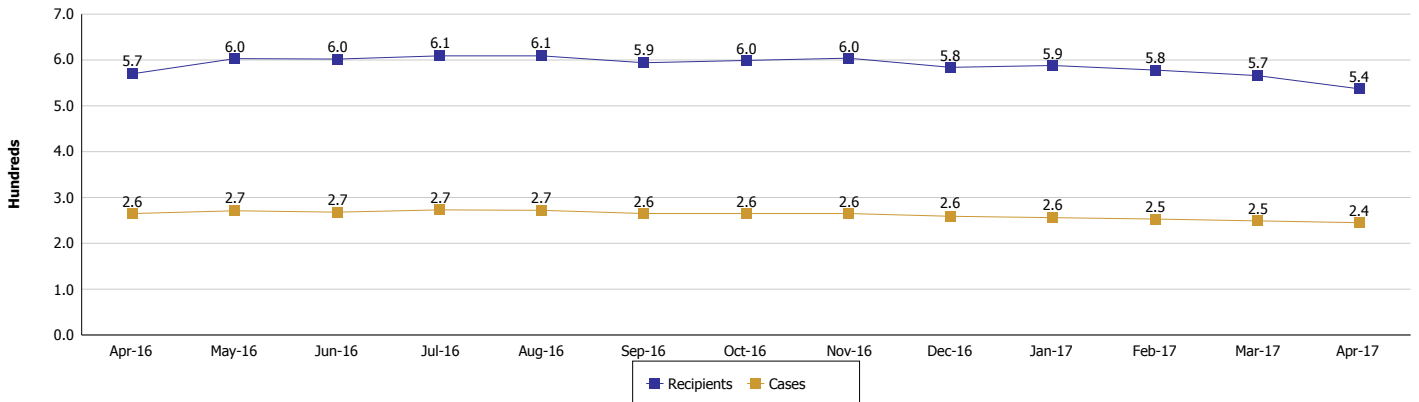
Location: Vanderburgh County

TEMPORARY ASSISTANCE FOR NEEDY FAMILIES (TANF)

TANF Regular And TANF Two-Parent Cash Assistance



TANF Cases and Recipients (TANF Regular and TANF Two-Parent)



Note:

All data July 2014 and following will be broken out according to the new DFR region structure effective July 1 2014.



DIVISION OF FAMILY RESOURCES

Monthly Management Report

Reporting Month: April 2017

Location: Vanderburgh County

SUPPLEMENTAL NUTRITION ASSISTANCE PROGRAM (SNAP)

	April 2017	March 2017	April 2016	Annual Change
Total issuance	\$2,377,635	\$2,417,777	\$2,706,750	-12.16%
Number of households receiving SNAP benefits	9,592	9,766	10,542	-9.01%
Number of recipients	20,151	20,598	22,416	-10.10%
Average issuance per household	\$247.88	\$247.57	\$256.76	-3.46%
Average issuance per recipient	\$117.99	\$117.38	\$120.75	-2.29%

Note:

All data July 2014 and following will be broken out according to the new DFR region structure effective July 1 2014.



DIVISION OF FAMILY RESOURCES

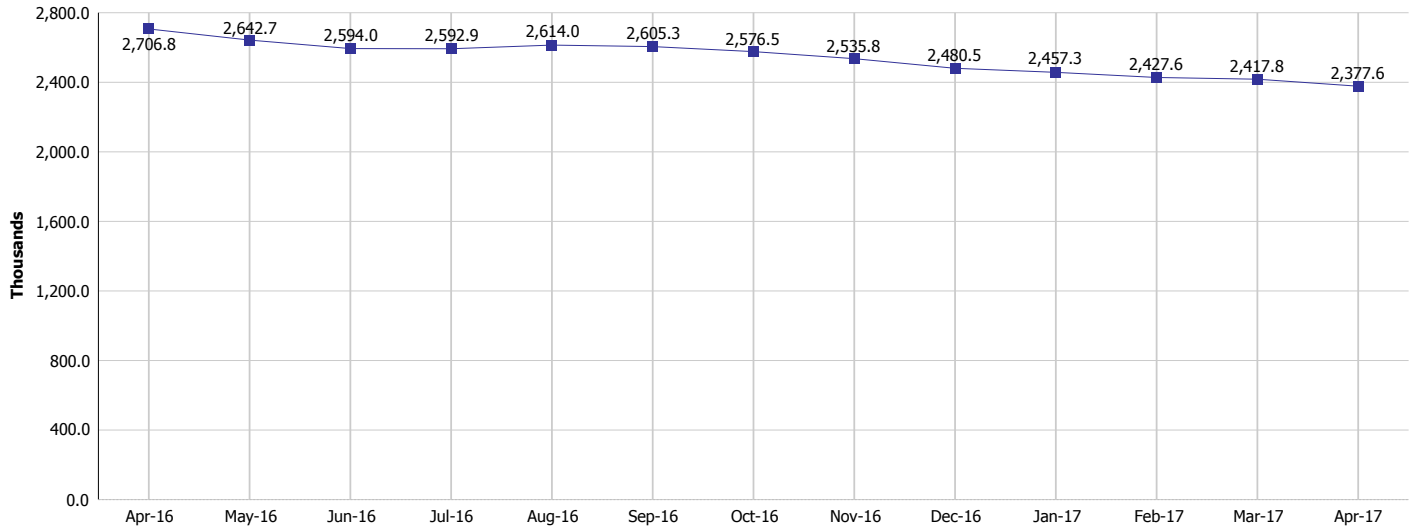
Monthly Management Report

Reporting Month: April 2017

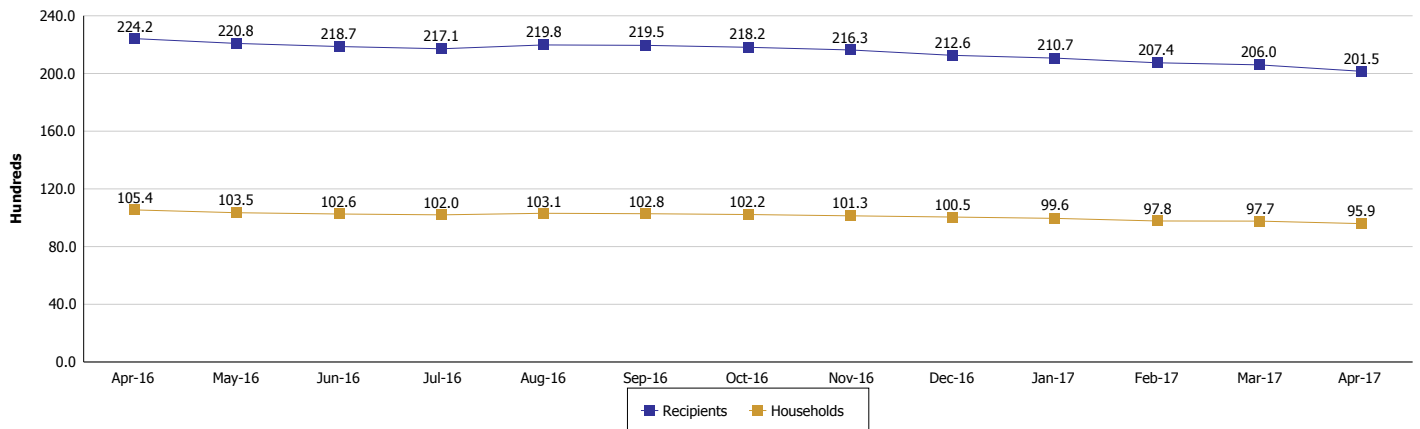
Location: Vanderburgh County

SUPPLEMENTAL NUTRITION ASSISTANCE PROGRAM (SNAP)

SNAP Issuance



SNAP Households and Recipients



Note:

All data July 2014 and following will be broken out according to the new DFR region structure effective July 1 2014.



DIVISION OF FAMILY RESOURCES

Monthly Management Report

Reporting Month: April 2017

Location: Vanderburgh County

HIP 2.0 and SNAP

	April 2017	March 2017	April 2016	Annual Change
Total HIP 2.0 Members	12,498	12,616	11,229	11.30%
HIP Members also SNAP Recipients	4,652	4,803	4,991	-6.79%
Percentage HIP Members SNAP Recipients	37.2%	38.1%	44.4%	5.36%
HIP Members SNAP ABAWDs	201	225	248	-18.95%
Percentage HIP Members SNAP ABAWDs	1.6%	1.8%	2.2%	5.36%

Note:

All data July 2014 and following will be broken out according to the new DFR region structure effective July 1 2014.



DIVISION OF FAMILY RESOURCES

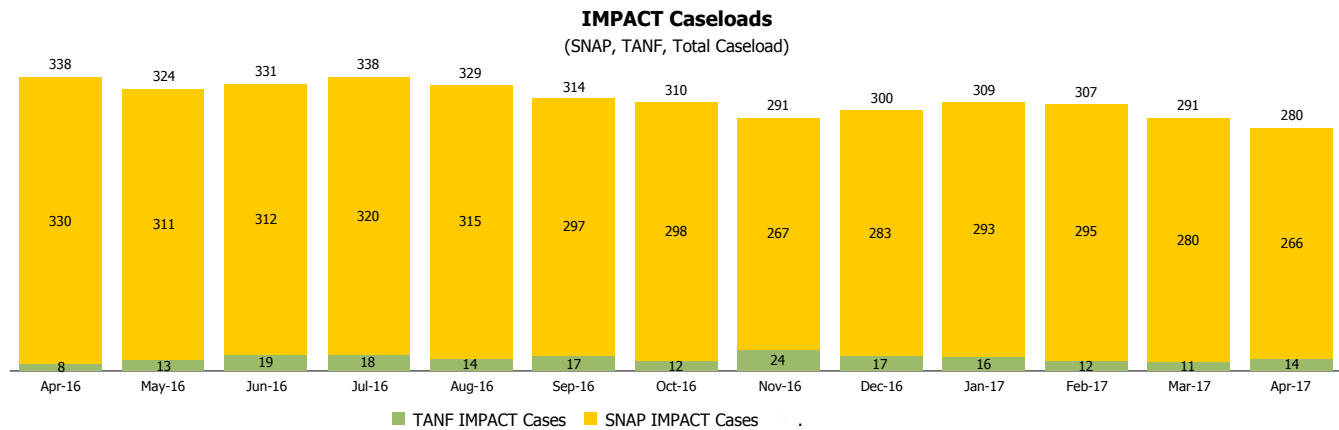
Monthly Management Report

Reporting Month: April 2017

Location: Vanderburgh County

INDIANA MANPOWER PLACEMENT AND COMPREHENSIVE TRAINING (IMPACT)

	April 2017	March 2017	April 2016	Annual Change
Number of IMPACT cases	280	291	338	-17.16%
Number of TANF IMPACT adults	14	11	8	75.00%
Number of SNAP IMPACT Cases	266	280	330	-19.39%
Total number of adults employed	112	51	57	96.49%
Number of TANF IMPACT adults newly employed (within past 30 days)	6	3	3	100.00%
Number of SNAP IMPACT adults employed	106	48	54	96.30%
Total number of adults ineligible due to employment	199	164	216	-7.87%
Number of TANF adults ineligible due to employment	1	3	0	
Number of SNAP adults ineligible due to employment	198	161	216	-8.33%



Note:

All data July 2014 and following will be broken out according to the new DFR region structure effective July 1 2014.