



DIVISION OF FAMILY RESOURCES

Switzerland County Monthly Management Report August 2017

State of Indiana

Eric Holcomb
Governor

Family and Social Services Administration

Jennifer Walthall, M.D.
Secretary

Division of Family Resources

Adrienne Shields
Director

For questions regarding data on this report contact:
office.Communications@fssa.IN.gov



State of Indiana

Published September 2017



DIVISION OF FAMILY RESOURCES

Monthly Management Report

Reporting Month: August 2017

Location: Switzerland County

TEMPORARY ASSISTANCE FOR NEEDY FAMILIES (TANF)

Child-Only and One-Parent Families	Aug 31, 2017	July 2017	August 2016	Annual Change
Number of families receiving TANF Grants	22	23	18	22.22%
Total number of grant recipients	40	44	37	8.11%
Number of adult grant recipients	2	3	3	-33.33%
Number of child grant recipients	38	41	34	11.76%
Total payments	\$4,086	\$4,433	\$3,314	23.30%
Average payment per case	\$185.73	\$192.74	\$184.11	0.88%
Average payment per recipient	\$102.15	\$100.75	\$89.57	14.05%
Number of cases with benefits reduced to zero	0	0	0	0%
Number of recipients with benefits reduced to zero	0	0	0	0%
Number of adult recipients with benefit reduced to zero	0	0	0	0%
Number of child recipients with benefit reduced to zero	0	0	0	0%

Two-Parent Families	Aug 31, 2017	July 2017	August 2016	Annual Change
Number of families receiving TANF Grants	0	0	0	0%
Total number of grant recipients	0	0	0	0%
Number of adult grant recipients	0	0	0	0%
Number of child grant recipients	0	0	0	0%
Total payments	\$0	\$0	\$0	0%
Average payment per case	\$0.00	\$0.00	\$0.00	0.00%
Average payment per recipient	\$0.00	\$0.00	\$0.00	0.00%
Number of cases with benefits reduced to zero	0	0	0	0%
Number of recipients with benefits reduced to zero	0	0	0	0%
Number of adult recipients with benefit reduced to zero	0	0	0	0%
Number of child recipients with benefit reduced to zero	0	0	0	0%

Note:

All data July 2014 and following will be broken out according to the new DFR region structure effective July 1 2014.

Source:



DIVISION OF FAMILY RESOURCES

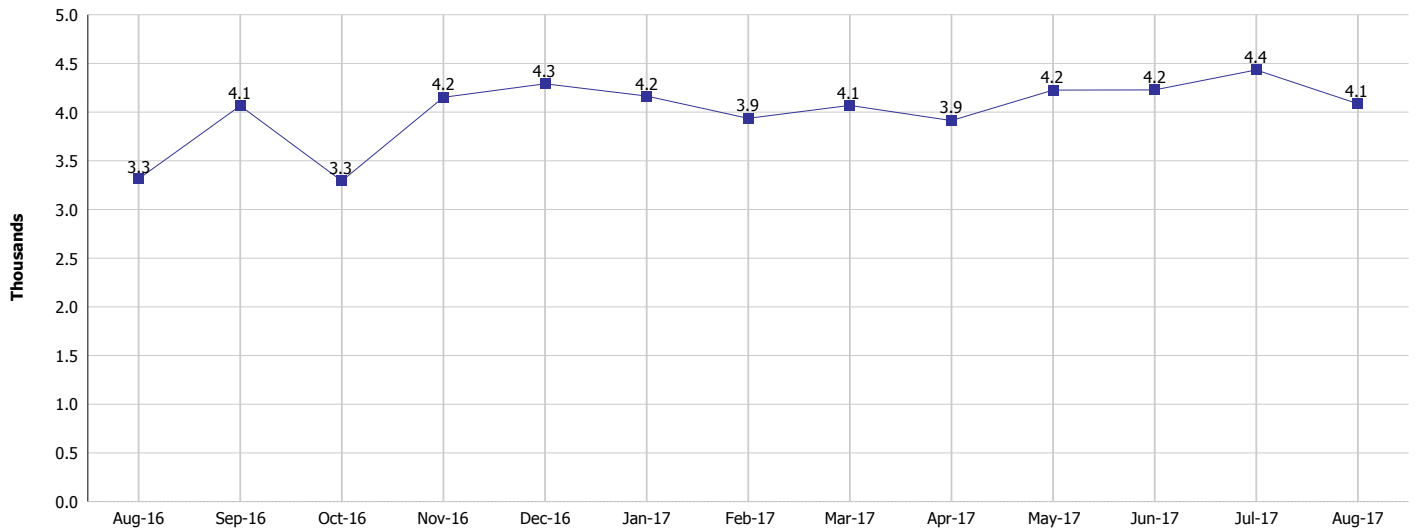
Monthly Management Report

Reporting Month: August 2017

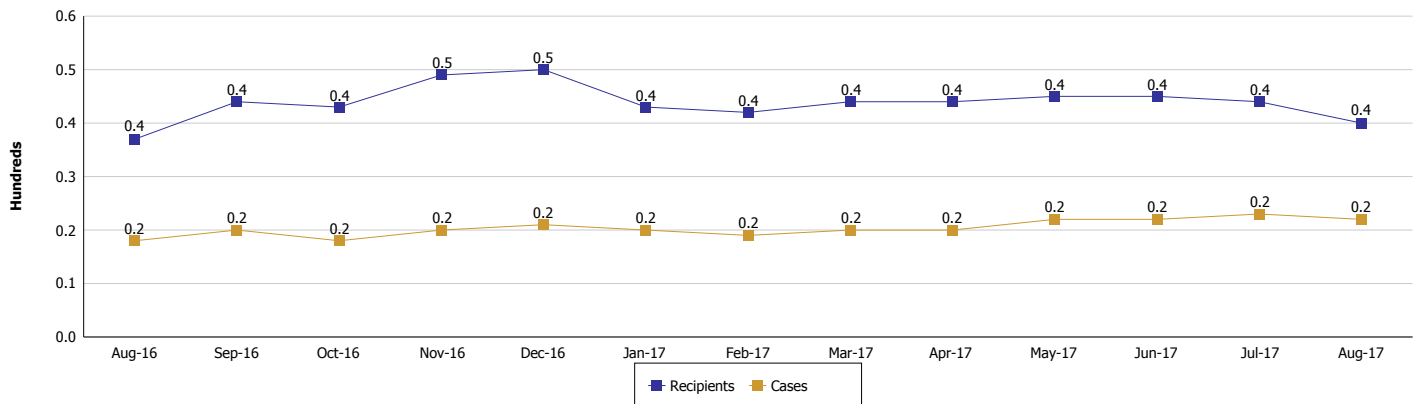
Location: Switzerland County

TEMPORARY ASSISTANCE FOR NEEDY FAMILIES (TANF)

TANF Regular And TANF Two-Parent Cash Assistance



TANF Cases and Recipients (TANF Regular and TANF Two-Parent)



Note:

All data July 2014 and following will be broken out according to the new DFR region structure effective July 1 2014.



DIVISION OF FAMILY RESOURCES

Monthly Management Report

Reporting Month: August 2017

Location: Switzerland County

SUPPLEMENTAL NUTRITION ASSISTANCE PROGRAM (SNAP)

	August 2017	July 2017	August 2016	Annual Change
Total issuance	\$125,916	\$125,205	\$133,177	-5.45%
Number of households receiving SNAP benefits	448	445	487	-8.01%
Number of recipients	1,070	1,066	1,173	-8.78%
Average issuance per household	\$281.06	\$281.36	\$273.46	2.78%
Average issuance per recipient	\$117.68	\$117.45	\$113.54	3.65%

Note:

All data July 2014 and following will be broken out according to the new DFR region structure effective July 1 2014.



DIVISION OF FAMILY RESOURCES

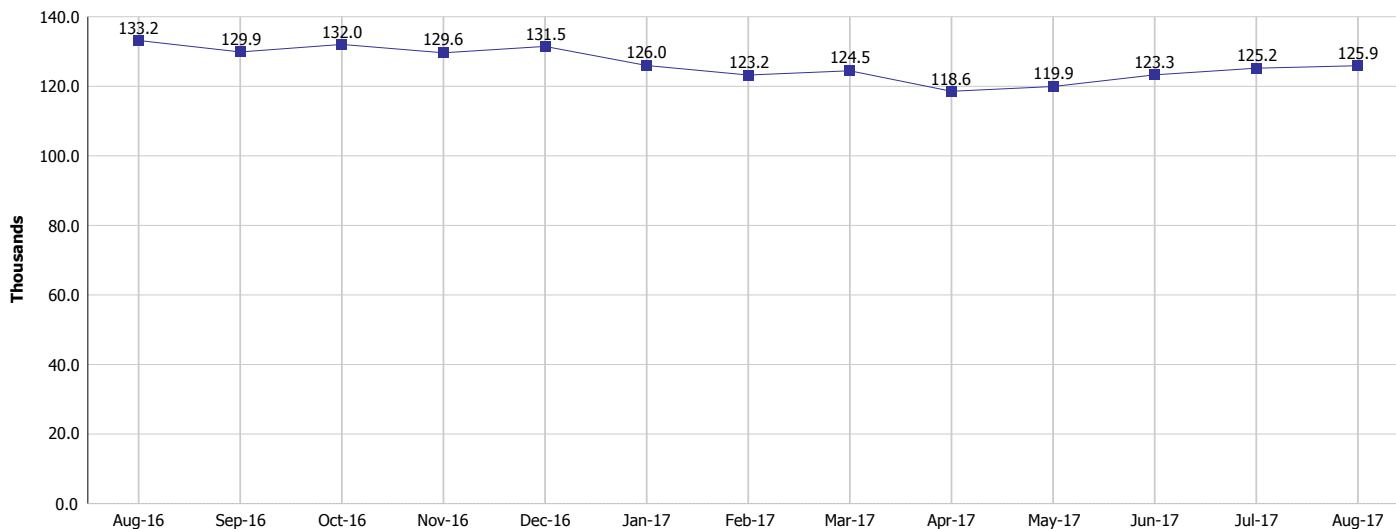
Monthly Management Report

Reporting Month: August 2017

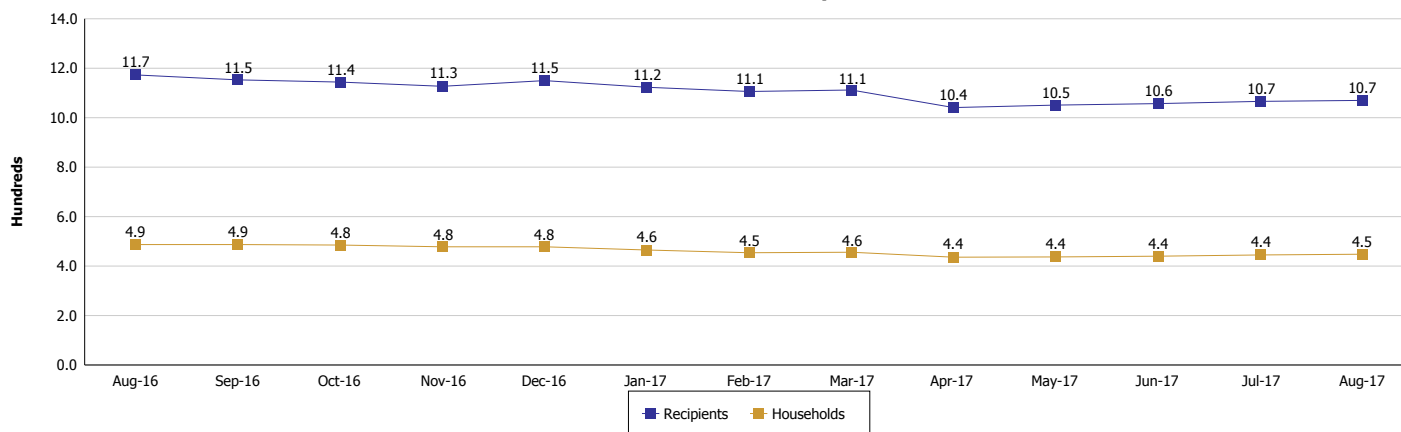
Location: Switzerland County

SUPPLEMENTAL NUTRITION ASSISTANCE PROGRAM (SNAP)

SNAP Issuance



SNAP Households and Recipients



Note:

All data July 2014 and following will be broken out according to the new DFR region structure effective July 1 2014.



DIVISION OF FAMILY RESOURCES

Monthly Management Report

Reporting Month: August 2017

Location: Switzerland County

HIP 2.0 and SNAP

	August 2017	July 2017	August 2016	Annual Change
Total HIP 2.0 Members	672	672	623	7.87%
HIP Members also SNAP Recipients	240	251	257	-6.61%
Percentage HIP Members SNAP Recipients	35.7%	37.4%	41.3%	3.26%
HIP Members SNAP ABAWDs	7	7	10	-30.00%
Percentage HIP Members SNAP ABAWDs	1.0%	1.0%	1.6%	3.26%

Note:

All data July 2014 and following will be broken out according to the new DFR region structure effective July 1 2014.



DIVISION OF FAMILY RESOURCES

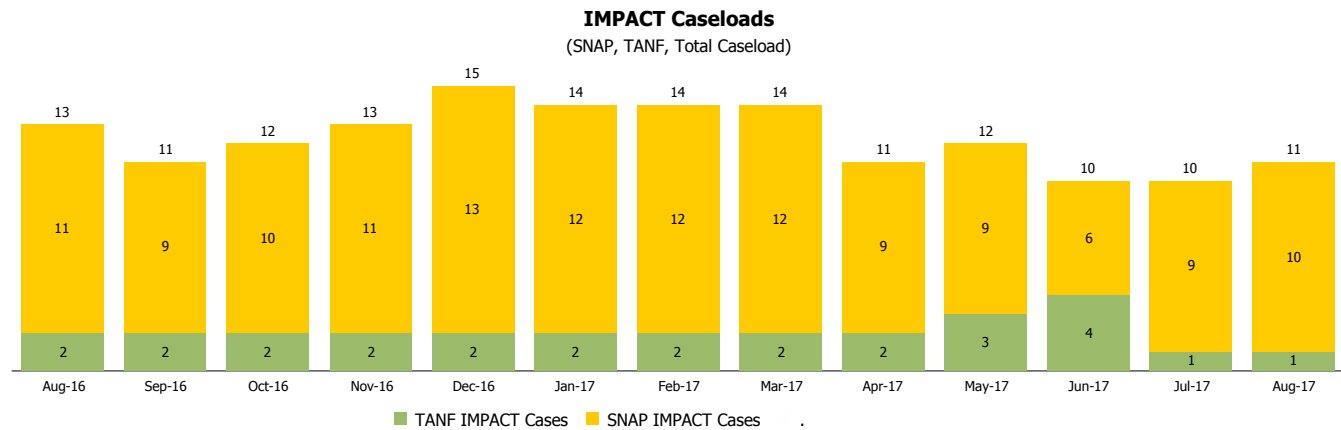
Monthly Management Report

Reporting Month: August 2017

Location: Switzerland County

INDIANA MANPOWER PLACEMENT AND COMPREHENSIVE TRAINING (IMPACT)

	August 2017	July 2017	August 2016	Annual Change
Number of IMPACT cases	11	10	13	-15.38%
Number of TANF IMPACT adults	1	1	2	-50.00%
Number of SNAP IMPACT Cases	10	9	11	-9.09%
Total number of adults employed	0	0	2	-100.00%
Number of TANF IMPACT adults newly employed (within past 30 days)	0	0	0	
Number of SNAP IMPACT adults employed	0	0	2	-100.00%
Total number of adults ineligible due to employment	13	3	9	44.44%
Number of TANF adults ineligible due to employment	0	0	0	
Number of SNAP adults ineligible due to employment	13	3	9	44.44%



Note:

All data July 2014 and following will be broken out according to the new DFR region structure effective July 1 2014.