



## DIVISION OF FAMILY RESOURCES

# Starke County Monthly Management Report August 2017

### State of Indiana

Eric Holcomb  
Governor

### Family and Social Services Administration

Jennifer Walthall, M.D.  
Secretary

### Division of Family Resources

Adrienne Shields  
Director

For questions regarding data on this report contact:  
[office.Communications@fssa.IN.gov](mailto:office.Communications@fssa.IN.gov)



## State of Indiana

Published September 2017



## DIVISION OF FAMILY RESOURCES

### Monthly Management Report

Reporting Month: August 2017

Location: Starke County

#### TEMPORARY ASSISTANCE FOR NEEDY FAMILIES (TANF)

Child-Only and One-Parent Families	Aug 31, 2017	July 2017	August 2016	Annual Change
Number of families receiving TANF Grants	28	29	21	33.33%
Total number of grant recipients	57	58	30	90.00%
Number of adult grant recipients	10	10	4	150.00%
Number of child grant recipients	47	48	26	80.77%
Total payments	\$4,932	\$5,656	\$3,173	55.44%
Average payment per case	\$176.14	\$195.03	\$151.10	16.58%
Average payment per recipient	\$86.53	\$97.52	\$105.77	-18.19%
Number of cases with benefits reduced to zero	0	0	1	-100.00%
Number of recipients with benefits reduced to zero	0	0	2	-100.00%
Number of adult recipients with benefit reduced to zero	0	0	1	-100.00%
Number of child recipients with benefit reduced to zero	0	0	1	-100.00%

Two-Parent Families	Aug 31, 2017	July 2017	August 2016	Annual Change
Number of families receiving TANF Grants	1	1	2	-50.00%
Total number of grant recipients	1	1	6	-83.33%
Number of adult grant recipients	0	0	0	0%
Number of child grant recipients	1	1	6	-83.33%
Total payments	\$139	\$139	\$337	-58.75%
Average payment per case	\$139.00	\$139.00	\$168.50	-17.51%
Average payment per recipient	\$139.00	\$139.00	\$56.17	147.48%
Number of cases with benefits reduced to zero	0	0	0	0%
Number of recipients with benefits reduced to zero	0	0	0	0%
Number of adult recipients with benefit reduced to zero	0	0	0	0%
Number of child recipients with benefit reduced to zero	0	0	0	0%

**Note:**

All data July 2014 and following will be broken out according to the new DFR region structure effective July 1 2014.

Source:



## DIVISION OF FAMILY RESOURCES

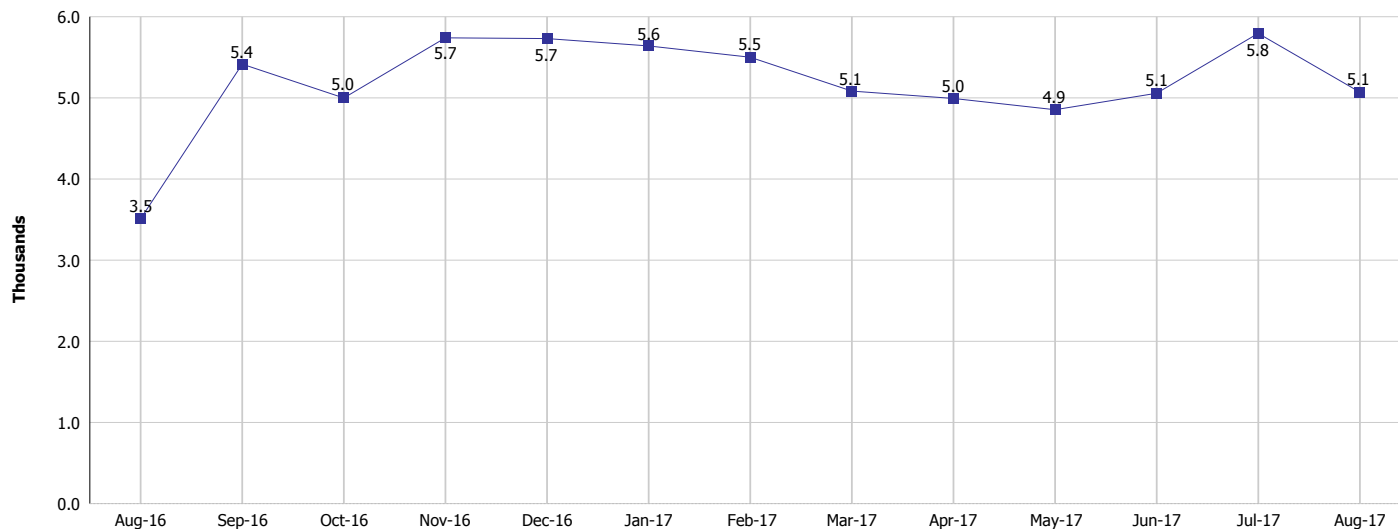
### Monthly Management Report

Reporting Month: August 2017

Location: Starke County

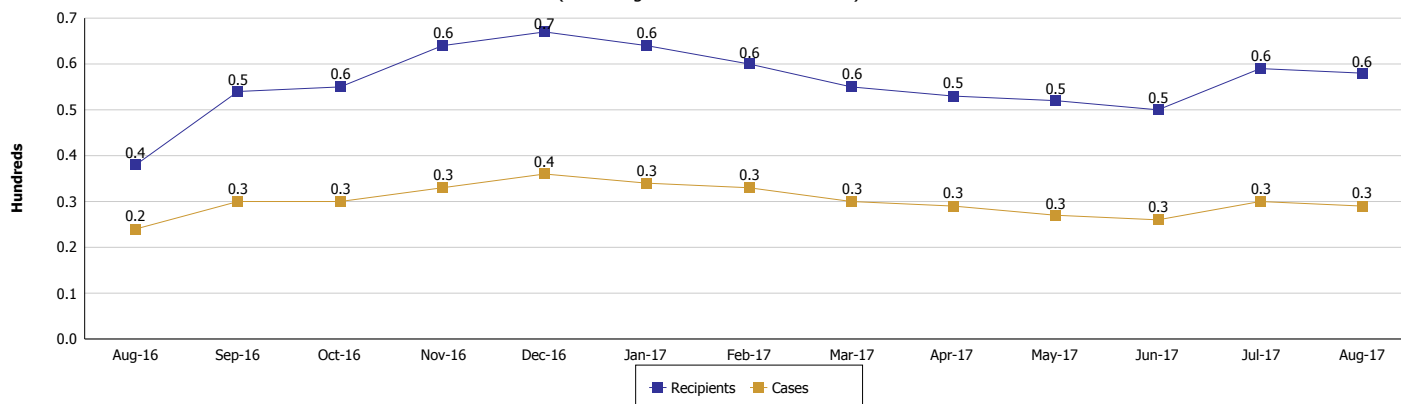
#### TEMPORARY ASSISTANCE FOR NEEDY FAMILIES (TANF)

#### TANF Regular And TANF Two-Parent Cash Assistance



#### TANF Cases and Recipients

(TANF Regular and TANF Two-Parent)



#### Note:

All data July 2014 and following will be broken out according to the new DFR region structure effective July 1 2014.



## DIVISION OF FAMILY RESOURCES

### Monthly Management Report

Reporting Month: August 2017

Location: Starke County

#### SUPPLEMENTAL NUTRITION ASSISTANCE PROGRAM (SNAP)

	August 2017	July 2017	August 2016	Annual Change
Total issuance	\$342,688	\$336,798	\$364,808	-6.06%
Number of households receiving SNAP benefits	1,340	1,328	1,444	-7.20%
Number of recipients	2,984	2,945	3,216	-7.21%
Average issuance per household	\$255.74	\$253.61	\$252.64	1.23%
Average issuance per recipient	\$114.84	\$114.36	\$113.44	1.23%

**Note:**

All data July 2014 and following will be broken out according to the new DFR region structure effective July 1 2014.



## DIVISION OF FAMILY RESOURCES

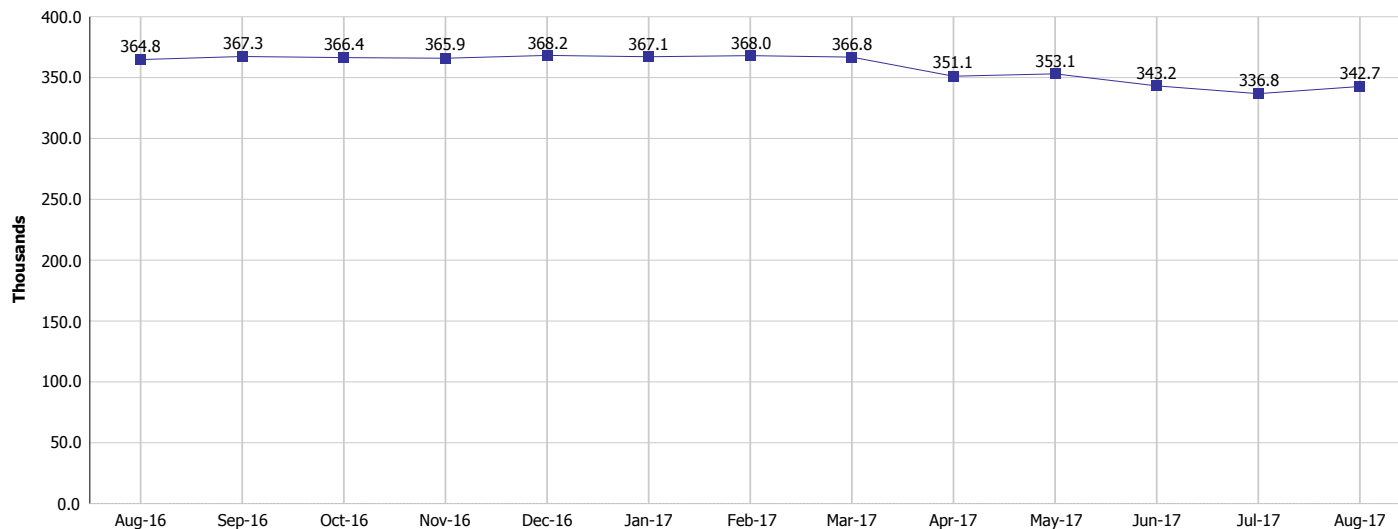
### Monthly Management Report

Reporting Month: August 2017

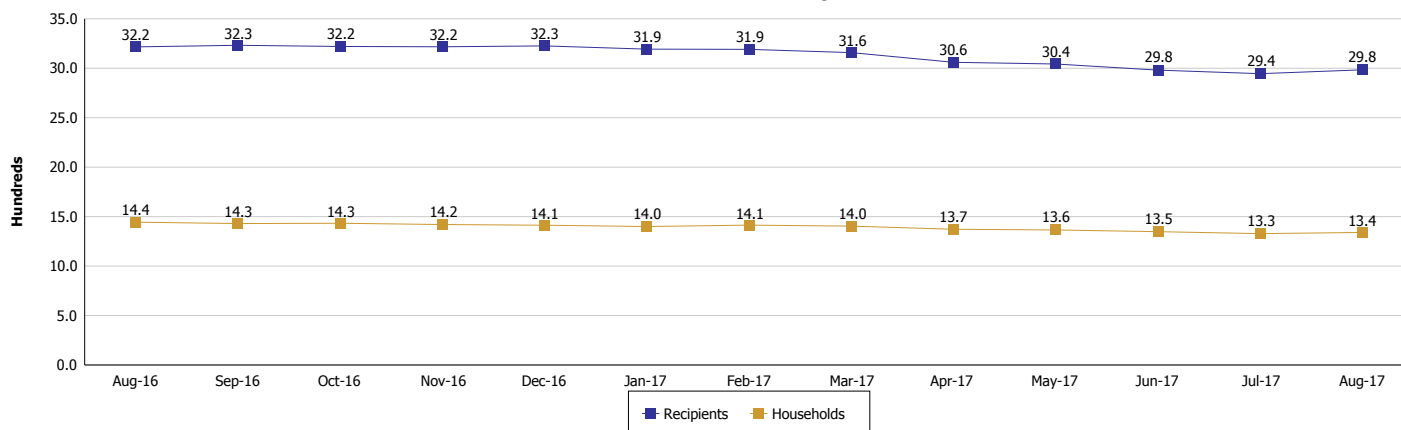
Location: Starke County

#### SUPPLEMENTAL NUTRITION ASSISTANCE PROGRAM (SNAP)

SNAP Issuance



SNAP Households and Recipients



**Note:**

All data July 2014 and following will be broken out according to the new DFR region structure effective July 1 2014.



## DIVISION OF FAMILY RESOURCES

### Monthly Management Report

Reporting Month: August 2017

Location: Starke County

#### HIP 2.0 and SNAP

	August 2017	July 2017	August 2016	Annual Change
Total HIP 2.0 Members	2,187	2,169	2,025	8.00%
HIP Members also SNAP Recipients	765	759	845	-9.47%
Percentage HIP Members SNAP Recipients	35.0%	35.0%	41.7%	2.58%
HIP Members SNAP ABAWDs	25	18	32	-21.88%
Percentage HIP Members SNAP ABAWDs	1.1%	0.8%	1.6%	2.58%

**Note:**

All data July 2014 and following will be broken out according to the new DFR region structure effective July 1 2014.



## DIVISION OF FAMILY RESOURCES

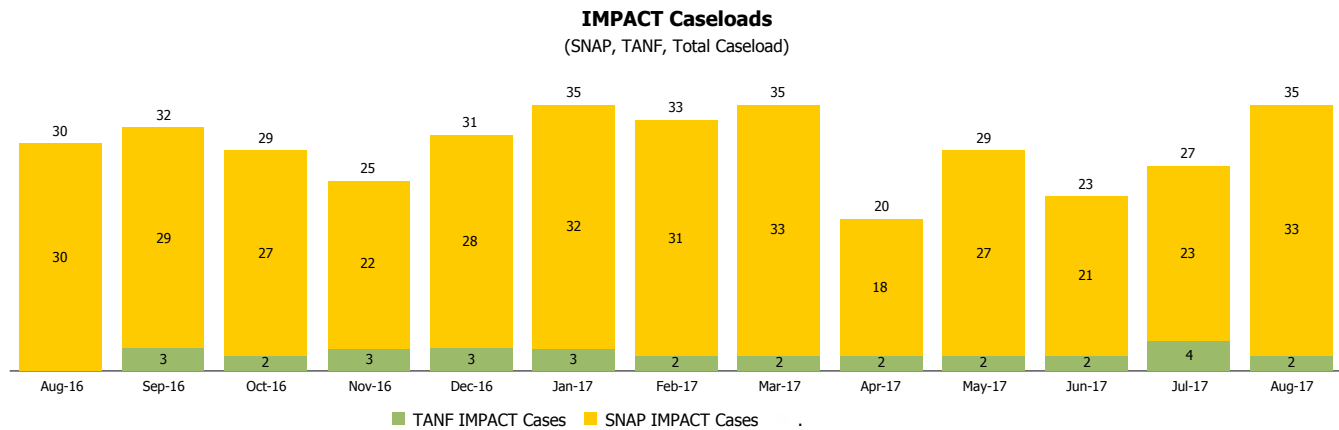
### Monthly Management Report

Reporting Month: August 2017

Location: Starke County

#### INDIANA MANPOWER PLACEMENT AND COMPREHENSIVE TRAINING (IMPACT)

	August 2017	July 2017	August 2016	Annual Change
Number of IMPACT cases	35	27	30	16.67%
Number of TANF IMPACT adults	2	4	0	
Number of SNAP IMPACT Cases	33	23	30	10.00%
Total number of adults employed	4	9	8	-50.00%
Number of TANF IMPACT adults newly employed (within past 30 days)	0	1	0	
Number of SNAP IMPACT adults employed	4	8	8	-50.00%
Total number of adults ineligible due to employment	22	30	13	69.23%
Number of TANF adults ineligible due to employment	0	0	0	
Number of SNAP adults ineligible due to employment	22	30	13	69.23%



**Note:**

All data July 2014 and following will be broken out according to the new DFR region structure effective July 1 2014.