



## DIVISION OF FAMILY RESOURCES

# Scott County Monthly Management Report December 2017

### State of Indiana

Eric Holcomb  
Governor

### Family and Social Services Administration

Jennifer Walthall, M.D.  
Secretary

### Division of Family Resources

Adrienne Shields  
Director

For questions regarding data on this report contact:  
[office.Communications@fssa.IN.gov](mailto:office.Communications@fssa.IN.gov)



## State of Indiana

Published January 2018



## DIVISION OF FAMILY RESOURCES

### Monthly Management Report

Reporting Month: December 2017

Location: Scott County

#### TEMPORARY ASSISTANCE FOR NEEDY FAMILIES (TANF)

Child-Only and One-Parent Families	Dec 31, 2017	November 2017	December 2016	Annual Change
Number of families receiving TANF Grants	40	42	42	-4.76%
Total number of grant recipients	70	74	77	-9.09%
Number of adult grant recipients	5	6	10	-50.00%
Number of child grant recipients	65	68	67	-2.99%
Total payments	\$7,209	\$7,636	\$7,426	-2.92%
Average payment per case	\$180.22	\$181.81	\$176.81	1.93%
Average payment per recipient	\$102.99	\$103.19	\$96.44	6.79%
Number of cases with benefits reduced to zero	0	0	0	0%
Number of recipients with benefits reduced to zero	0	0	0	0%
Number of adult recipients with benefit reduced to zero	0	0	0	0%
Number of child recipients with benefit reduced to zero	0	0	0	0%

Two-Parent Families	Dec 31, 2017	November 2017	December 2016	Annual Change
Number of families receiving TANF Grants	0	0	0	0%
Total number of grant recipients	0	0	0	0%
Number of adult grant recipients	0	0	0	0%
Number of child grant recipients	0	0	0	0%
Total payments	\$0	\$0	\$0	0%
Average payment per case	\$0.00	\$0.00	\$0.00	0.00%
Average payment per recipient	\$0.00	\$0.00	\$0.00	0.00%
Number of cases with benefits reduced to zero	0	0	0	0%
Number of recipients with benefits reduced to zero	0	0	0	0%
Number of adult recipients with benefit reduced to zero	0	0	0	0%
Number of child recipients with benefit reduced to zero	0	0	0	0%

**Note:**

All data July 2014 and following will be broken out according to the new DFR region structure effective July 1 2014.

Source:



## DIVISION OF FAMILY RESOURCES

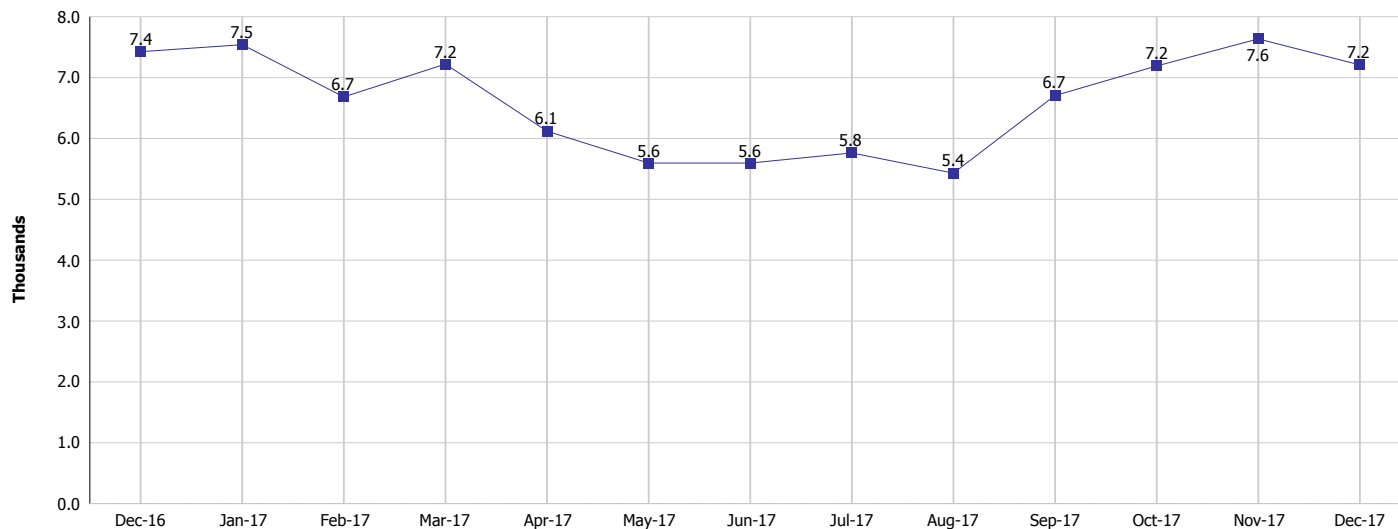
### Monthly Management Report

Reporting Month: December 2017

Location: Scott County

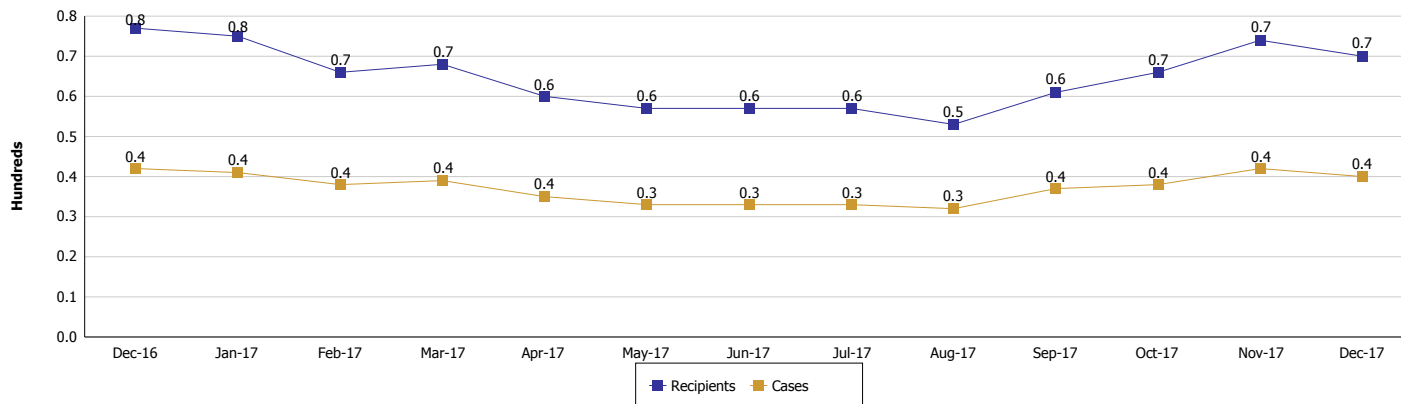
#### TEMPORARY ASSISTANCE FOR NEEDY FAMILIES (TANF)

#### TANF Regular And TANF Two-Parent Cash Assistance



#### TANF Cases and Recipients

(TANF Regular and TANF Two-Parent)



#### Note:

All data July 2014 and following will be broken out according to the new DFR region structure effective July 1 2014.



## DIVISION OF FAMILY RESOURCES

### Monthly Management Report

Reporting Month: December 2017

Location: Scott County

#### SUPPLEMENTAL NUTRITION ASSISTANCE PROGRAM (SNAP)

	December 2017	November 2017	December 2016	Annual Change
Total issuance	\$343,600	\$341,658	\$386,329	-11.06%
Number of households receiving SNAP benefits	1,443	1,443	1,580	-8.67%
Number of recipients	3,049	3,058	3,390	-10.06%
Average issuance per household	\$238.12	\$236.77	\$244.51	-2.61%
Average issuance per recipient	\$112.69	\$111.73	\$113.96	-1.11%

**Note:**

All data July 2014 and following will be broken out according to the new DFR region structure effective July 1 2014.



## DIVISION OF FAMILY RESOURCES

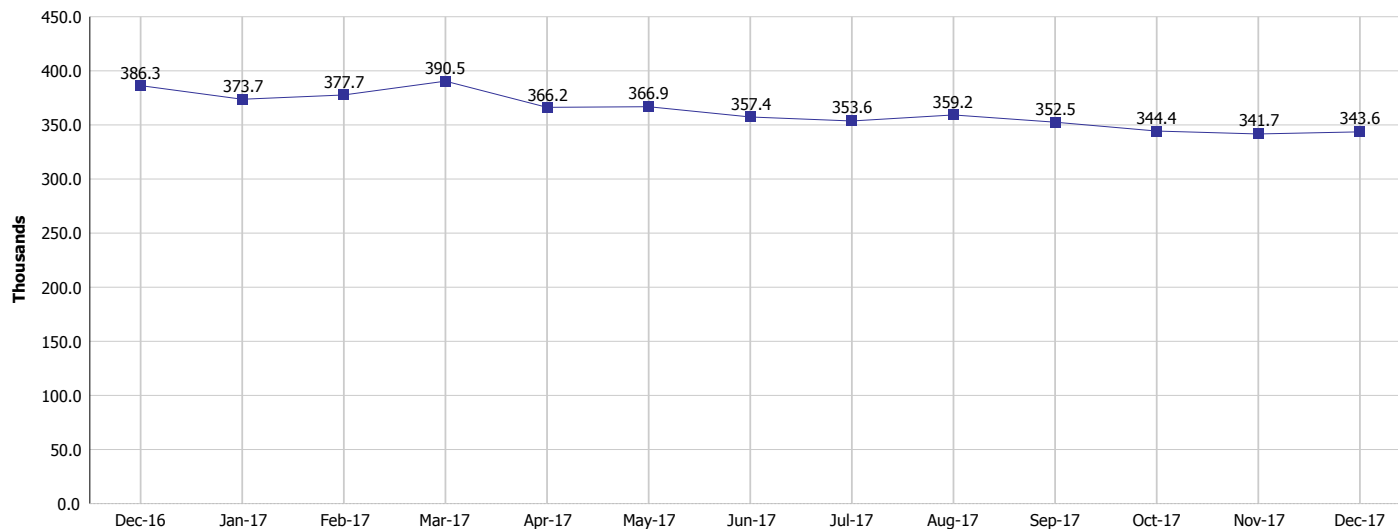
### Monthly Management Report

Reporting Month: December 2017

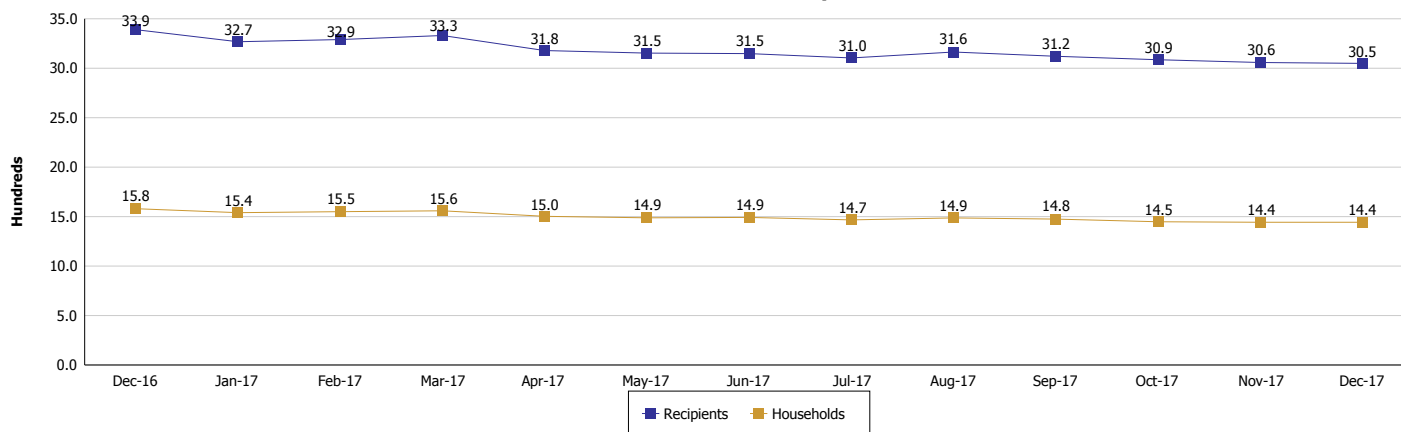
Location: Scott County

#### SUPPLEMENTAL NUTRITION ASSISTANCE PROGRAM (SNAP)

#### SNAP Issuance



#### SNAP Households and Recipients



**Note:**

All data July 2014 and following will be broken out according to the new DFR region structure effective July 1 2014.



## DIVISION OF FAMILY RESOURCES

### Monthly Management Report

Reporting Month: December 2017

Location: Scott County

#### HIP 2.0 and SNAP

	December 2017	November 2017	December 2016	Annual Change
Total HIP 2.0 Members	2,190	2,208	2,114	3.60%
HIP Members also SNAP Recipients	778	781	848	-8.25%
Percentage HIP Members SNAP Recipients	35.5%	35.4%	40.1%	0.03%
HIP Members SNAP ABAWDs	21	24	26	-19.23%
Percentage HIP Members SNAP ABAWDs	1.0%	1.1%	1.2%	0.03%

**Note:**

All data July 2014 and following will be broken out according to the new DFR region structure effective July 1 2014.



## DIVISION OF FAMILY RESOURCES

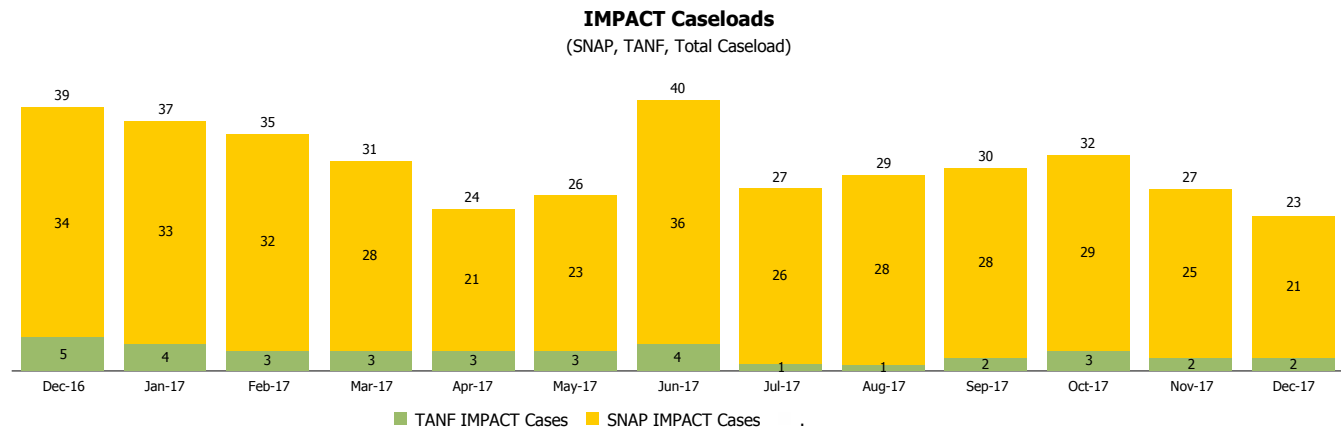
### Monthly Management Report

Reporting Month: December 2017

Location: Scott County

#### INDIANA MANPOWER PLACEMENT AND COMPREHENSIVE TRAINING (IMPACT)

	December 2017	November 2017	December 2016	Annual Change
Number of IMPACT cases	23	27	39	-41.03%
Number of TANF IMPACT adults	2	2	5	-60.00%
Number of SNAP IMPACT Cases	21	25	34	-38.24%
Total number of adults employed	0	1	3	-100.00%
Number of TANF IMPACT adults newly employed (within past 30 days)	0	0	0	
Number of SNAP IMPACT adults employed	0	1	3	-100.00%
Total number of adults ineligible due to employment	31	18	21	47.62%
Number of TANF adults ineligible due to employment	1	0	0	
Number of SNAP adults ineligible due to employment	30	18	21	42.86%



**Note:**

All data July 2014 and following will be broken out according to the new DFR region structure effective July 1 2014.