



DIVISION OF FAMILY RESOURCES

Saint Joseph County Monthly Management Report August 2017

State of Indiana

Eric Holcomb
Governor

Family and Social Services Administration

Jennifer Walthall, M.D.
Secretary

Division of Family Resources

Adrienne Shields
Director

For questions regarding data on this report contact:
office.Communications@fssa.IN.gov



State of Indiana

Published September 2017



DIVISION OF FAMILY RESOURCES

Monthly Management Report

Reporting Month: August 2017

Location: Saint Joseph County

TEMPORARY ASSISTANCE FOR NEEDY FAMILIES (TANF)

Child-Only and One-Parent Families	Aug 31, 2017	July 2017	August 2016	Annual Change
Number of families receiving TANF Grants	236	226	260	-9.23%
Total number of grant recipients	496	469	547	-9.32%
Number of adult grant recipients	63	65	76	-17.11%
Number of child grant recipients	433	404	471	-8.07%
Total payments	\$44,072	\$42,629	\$49,176	-10.38%
Average payment per case	\$186.75	\$188.62	\$189.14	-1.27%
Average payment per recipient	\$88.85	\$90.89	\$89.90	-1.16%
Number of cases with benefits reduced to zero	4	4	5	-20.00%
Number of recipients with benefits reduced to zero	10	10	15	-33.33%
Number of adult recipients with benefit reduced to zero	2	2	4	-50.00%
Number of child recipients with benefit reduced to zero	8	8	11	-27.27%

Two-Parent Families	Aug 31, 2017	July 2017	August 2016	Annual Change
Number of families receiving TANF Grants	18	19	19	-5.26%
Total number of grant recipients	67	68	76	-11.84%
Number of adult grant recipients	23	23	27	-14.81%
Number of child grant recipients	44	45	49	-10.20%
Total payments	\$3,963	\$4,390	\$4,529	-12.50%
Average payment per case	\$220.17	\$231.05	\$238.37	-7.64%
Average payment per recipient	\$59.15	\$64.56	\$59.59	-0.74%
Number of cases with benefits reduced to zero	0	0	1	-100.00%
Number of recipients with benefits reduced to zero	0	0	7	-100.00%
Number of adult recipients with benefit reduced to zero	0	0	2	-100.00%
Number of child recipients with benefit reduced to zero	0	0	5	-100.00%

Note:

All data July 2014 and following will be broken out according to the new DFR region structure effective July 1 2014.

Source:



DIVISION OF FAMILY RESOURCES

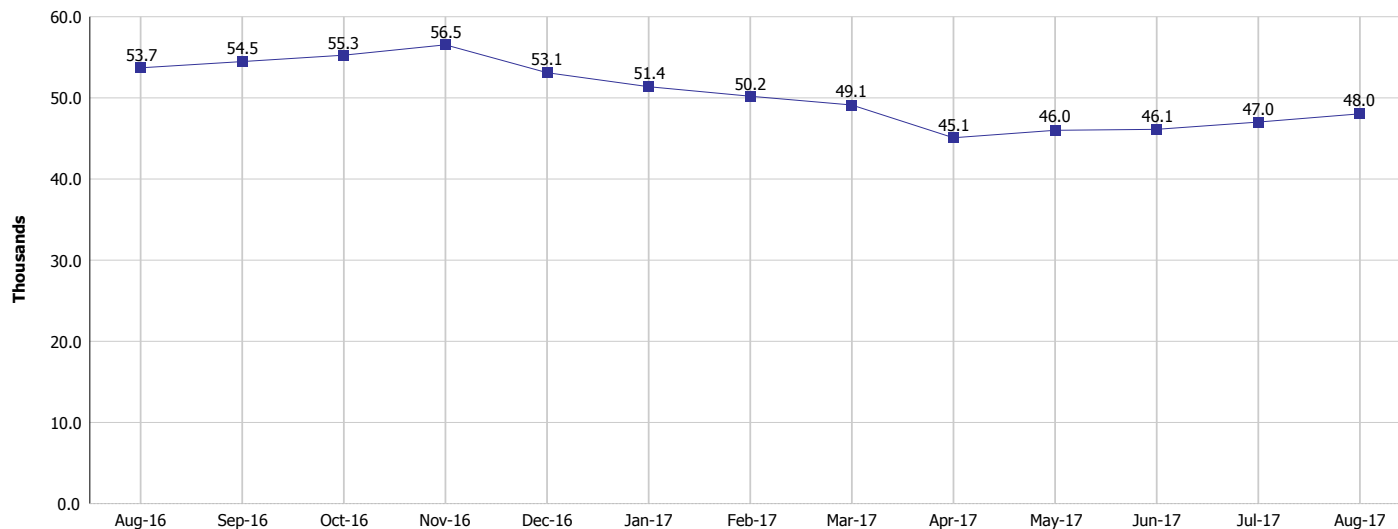
Monthly Management Report

Reporting Month: August 2017

Location: Saint Joseph County

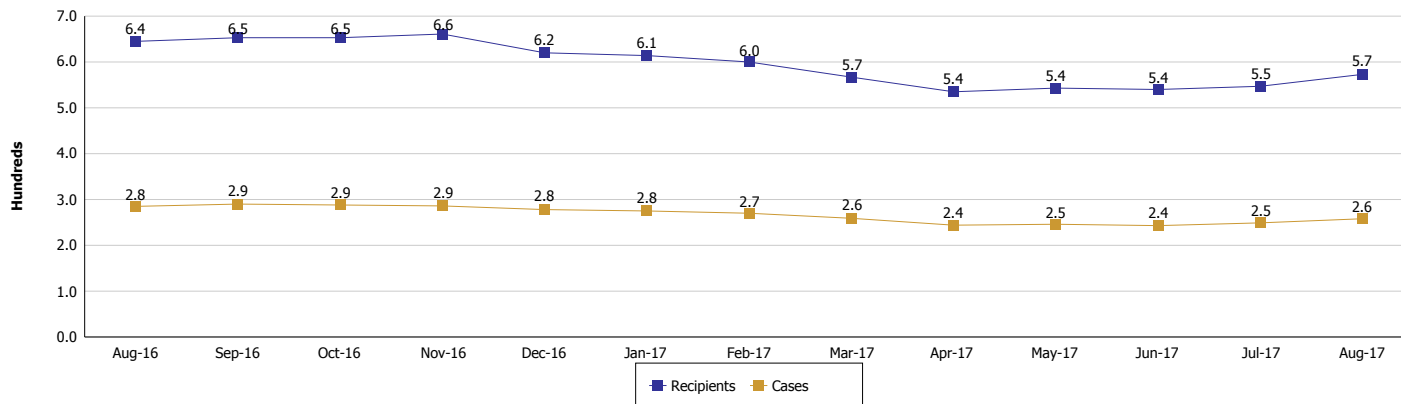
TEMPORARY ASSISTANCE FOR NEEDY FAMILIES (TANF)

TANF Regular And TANF Two-Parent Cash Assistance



TANF Cases and Recipients

(TANF Regular and TANF Two-Parent)



Note:

All data July 2014 and following will be broken out according to the new DFR region structure effective July 1 2014.



DIVISION OF FAMILY RESOURCES

Monthly Management Report

Reporting Month: August 2017

Location: Saint Joseph County

SUPPLEMENTAL NUTRITION ASSISTANCE PROGRAM (SNAP)

	August 2017	July 2017	August 2016	Annual Change
Total issuance	\$3,811,592	\$3,760,240	\$4,199,981	-9.25%
Number of households receiving SNAP benefits	13,523	13,430	14,968	-9.65%
Number of recipients	31,228	30,949	34,410	-9.25%
Average issuance per household	\$281.86	\$279.99	\$280.6	0.45%
Average issuance per recipient	\$122.06	\$121.5	\$122.06	0.00%

Note:

All data July 2014 and following will be broken out according to the new DFR region structure effective July 1 2014.



DIVISION OF FAMILY RESOURCES

Monthly Management Report

Reporting Month: August 2017

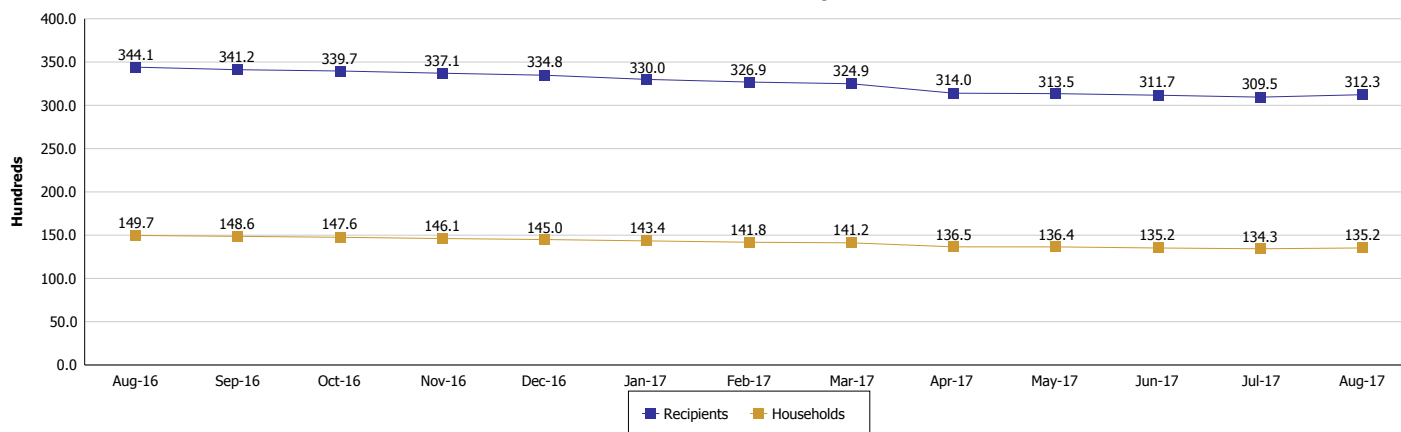
Location: Saint Joseph County

SUPPLEMENTAL NUTRITION ASSISTANCE PROGRAM (SNAP)

SNAP Issuance



SNAP Households and Recipients



Note:

All data July 2014 and following will be broken out according to the new DFR region structure effective July 1 2014.



DIVISION OF FAMILY RESOURCES

Monthly Management Report

Reporting Month: August 2017

Location: Saint Joseph County

HIP 2.0 and SNAP

	August 2017	July 2017	August 2016	Annual Change
Total HIP 2.0 Members	17,950	17,965	16,805	6.81%
HIP Members also SNAP Recipients	7,150	7,120	7,630	-6.29%
Percentage HIP Members SNAP Recipients	39.8%	39.6%	45.4%	2.47%
HIP Members SNAP ABAWDs	211	214	265	-20.38%
Percentage HIP Members SNAP ABAWDs	1.2%	1.2%	1.6%	2.47%

Note:

All data July 2014 and following will be broken out according to the new DFR region structure effective July 1 2014.



DIVISION OF FAMILY RESOURCES

Monthly Management Report

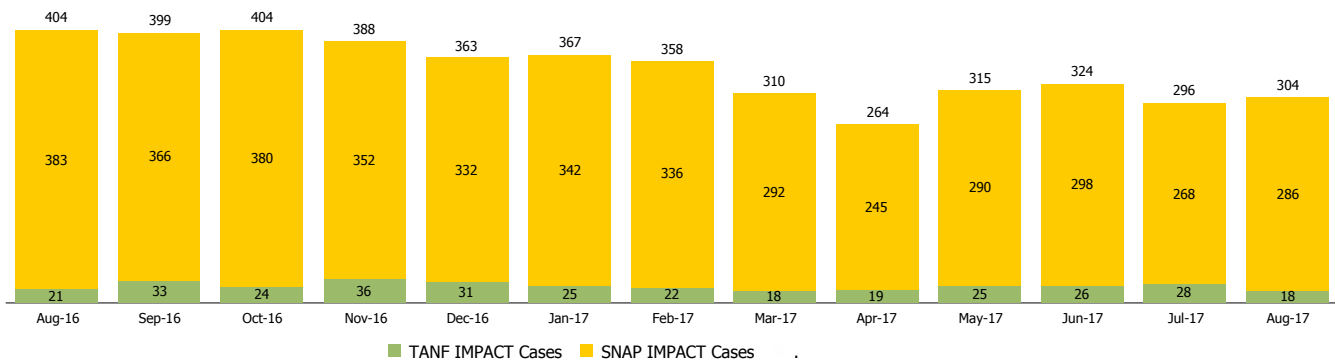
Reporting Month: August 2017

Location: Saint Joseph County

INDIANA MANPOWER PLACEMENT AND COMPREHENSIVE TRAINING (IMPACT)

	August 2017	July 2017	August 2016	Annual Change
Number of IMPACT cases	304	296	404	-24.75%
Number of TANF IMPACT adults	18	28	21	-14.29%
Number of SNAP IMPACT Cases	286	268	383	-25.33%
Total number of adults employed	86	49	100	-14.00%
Number of TANF IMPACT adults newly employed (within past 30 days)	1	3	10	-90.00%
Number of SNAP IMPACT adults employed	85	46	90	-5.56%
Total number of adults ineligible due to employment	231	257	262	-11.83%
Number of TANF adults ineligible due to employment	1	0	0	
Number of SNAP adults ineligible due to employment	230	257	262	-12.21%

IMPACT Caseloads
(SNAP, TANF, Total Caseload)



Note:

All data July 2014 and following will be broken out according to the new DFR region structure effective July 1 2014.