



DIVISION OF FAMILY RESOURCES

Ripley County Monthly Management Report October 2017

State of Indiana

Eric Holcomb
Governor

Family and Social Services Administration

Jennifer Walthall, M.D.
Secretary

Division of Family Resources

Adrienne Shields
Director

For questions regarding data on this report contact:
office.Communications@fssa.IN.gov



State of Indiana

Published November 2017



DIVISION OF FAMILY RESOURCES

Monthly Management Report

Reporting Month: October 2017

Location: Ripley County

TEMPORARY ASSISTANCE FOR NEEDY FAMILIES (TANF)

| Child-Only and One-Parent Families | Oct 31, 2017 | September 2017 | October 2016 | Annual Change |
|---|--------------|----------------|--------------|---------------|
| Number of families receiving TANF Grants | 23 | 26 | 35 | -34.29% |
| Total number of grant recipients | 54 | 58 | 67 | -19.40% |
| Number of adult grant recipients | 7 | 8 | 9 | -22.22% |
| Number of child grant recipients | 47 | 50 | 58 | -18.97% |
| Total payments | \$4,434 | \$5,141 | \$6,451 | -31.27% |
| Average payment per case | \$192.78 | \$197.73 | \$184.31 | 4.59% |
| Average payment per recipient | \$82.11 | \$88.64 | \$96.28 | -14.72% |
| Number of cases with benefits reduced to zero | 1 | 2 | 1 | 0.00% |
| Number of recipients with benefits reduced to zero | 5 | 6 | 1 | 400.00% |
| Number of adult recipients with benefit reduced to zero | 1 | 1 | 0 | 0% |
| Number of child recipients with benefit reduced to zero | 4 | 5 | 1 | 300.00% |

| Two-Parent Families | Oct 31, 2017 | September 2017 | October 2016 | Annual Change |
|---|--------------|----------------|--------------|---------------|
| Number of families receiving TANF Grants | 3 | 3 | 4 | -25.00% |
| Total number of grant recipients | 5 | 5 | 6 | -16.67% |
| Number of adult grant recipients | 2 | 2 | 0 | 0% |
| Number of child grant recipients | 3 | 3 | 6 | -50.00% |
| Total payments | \$285 | \$288 | \$673 | -57.65% |
| Average payment per case | \$95.00 | \$96.00 | \$168.25 | -43.54% |
| Average payment per recipient | \$57.00 | \$57.60 | \$112.17 | -49.18% |
| Number of cases with benefits reduced to zero | 0 | 0 | 0 | 0% |
| Number of recipients with benefits reduced to zero | 0 | 0 | 0 | 0% |
| Number of adult recipients with benefit reduced to zero | 0 | 0 | 0 | 0% |
| Number of child recipients with benefit reduced to zero | 0 | 0 | 0 | 0% |

Note:

All data July 2014 and following will be broken out according to the new DFR region structure effective July 1 2014.

Source:



DIVISION OF FAMILY RESOURCES

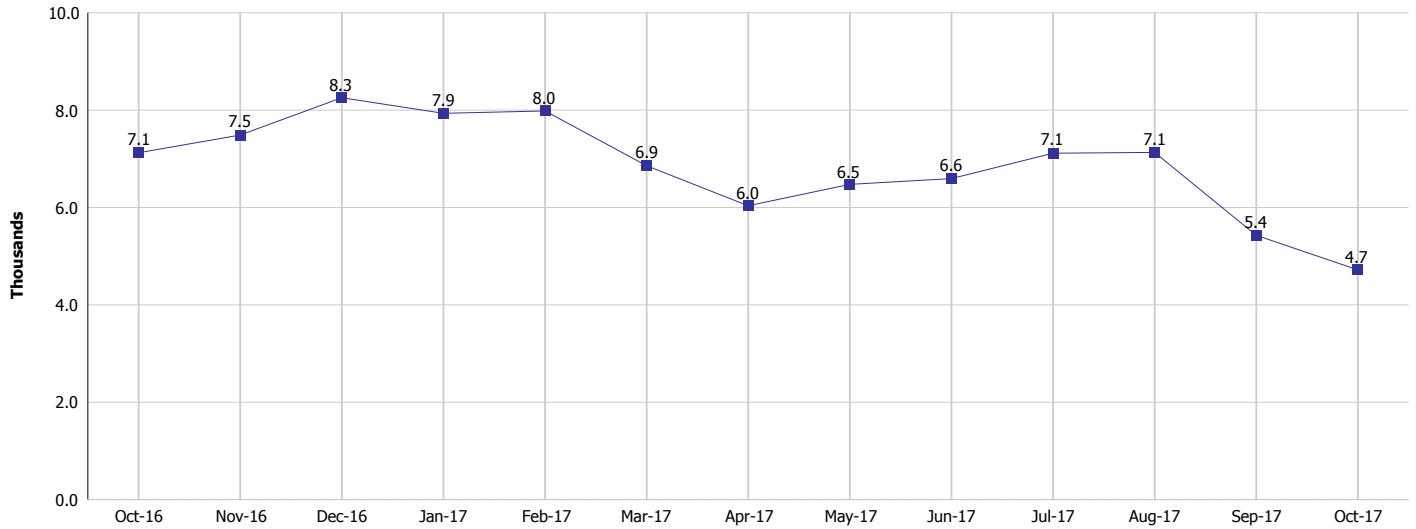
Monthly Management Report

Reporting Month: October 2017

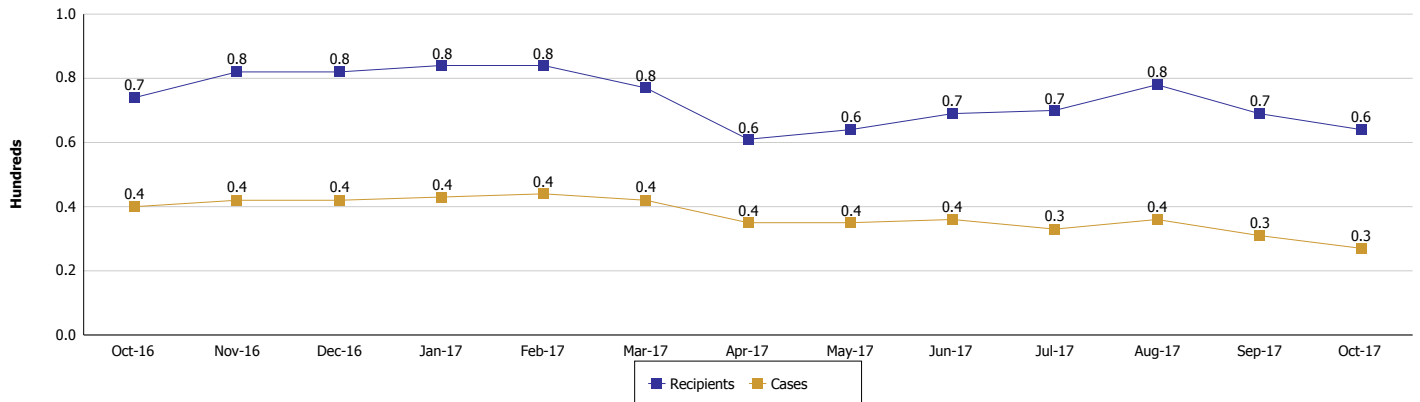
Location: Ripley County

TEMPORARY ASSISTANCE FOR NEEDY FAMILIES (TANF)

TANF Regular And TANF Two-Parent Cash Assistance



TANF Cases and Recipients
(TANF Regular and TANF Two-Parent)



Note:

All data July 2014 and following will be broken out according to the new DFR region structure effective July 1 2014.



DIVISION OF FAMILY RESOURCES

Monthly Management Report

Reporting Month: October 2017

Location: Ripley County

SUPPLEMENTAL NUTRITION ASSISTANCE PROGRAM (SNAP)

| | October 2017 | September 2017 | October 2016 | Annual Change |
|--|--------------|----------------|--------------|---------------|
| Total issuance | \$226,674 | \$233,359 | \$252,957 | -10.39% |
| Number of households receiving SNAP benefits | 898 | 912 | 948 | -5.27% |
| Number of recipients | 2,045 | 2,099 | 2,243 | -8.83% |
| Average issuance per household | \$252.42 | \$255.88 | \$266.83 | -5.40% |
| Average issuance per recipient | \$110.84 | \$111.18 | \$112.78 | -1.72% |

Note:

All data July 2014 and following will be broken out according to the new DFR region structure effective July 1 2014.



DIVISION OF FAMILY RESOURCES

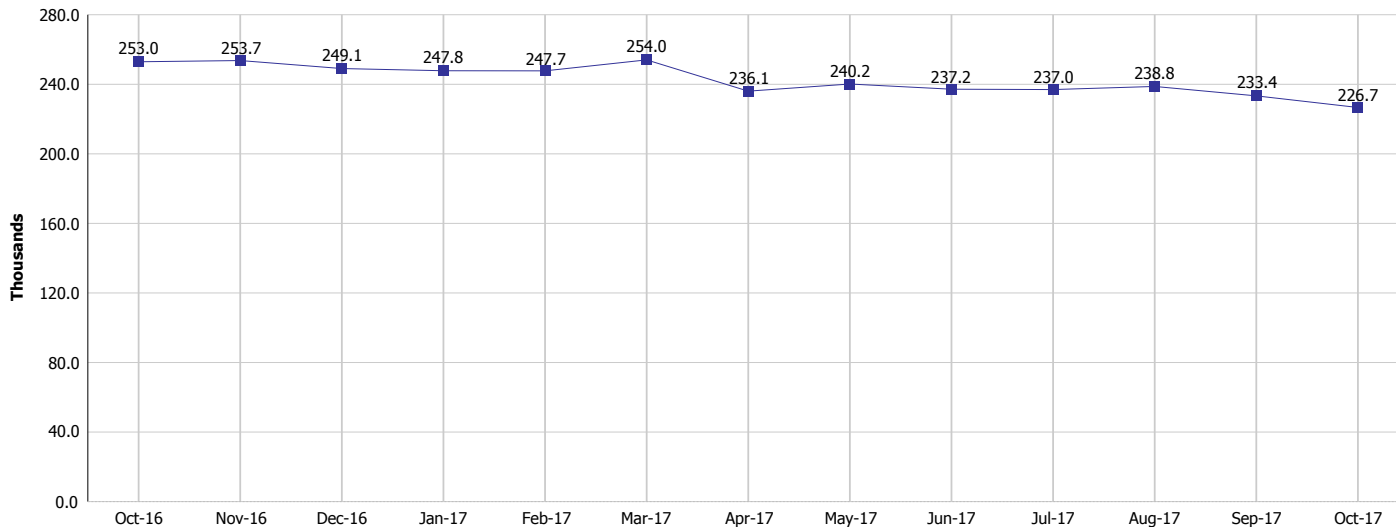
Monthly Management Report

Reporting Month: October 2017

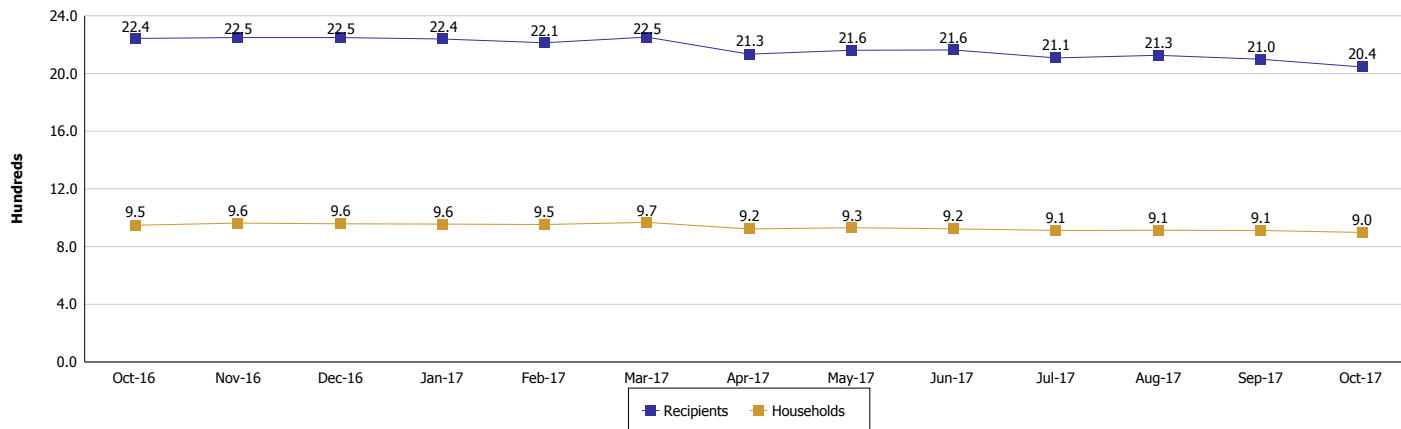
Location: Ripley County

SUPPLEMENTAL NUTRITION ASSISTANCE PROGRAM (SNAP)

SNAP Issuance



SNAP Households and Recipients



Note:

All data July 2014 and following will be broken out according to the new DFR region structure effective July 1 2014.



DIVISION OF FAMILY RESOURCES

Monthly Management Report

Reporting Month: October 2017

Location: Ripley County

HIP 2.0 and SNAP

| | October 2017 | September 2017 | October 2016 | Annual Change |
|--|--------------|----------------|--------------|---------------|
| Total HIP 2.0 Members | 1,523 | 1,534 | 1,365 | 11.58% |
| HIP Members also SNAP Recipients | 478 | 503 | 487 | -1.85% |
| Percentage HIP Members SNAP Recipients | 31.4% | 32.8% | 35.7% | 8.44% |
| HIP Members SNAP ABAWDs | 17 | 13 | 9 | 88.89% |
| Percentage HIP Members SNAP ABAWDs | 1.1% | 0.8% | 0.7% | 8.44% |

Note:

All data July 2014 and following will be broken out according to the new DFR region structure effective July 1 2014.



DIVISION OF FAMILY RESOURCES

Monthly Management Report

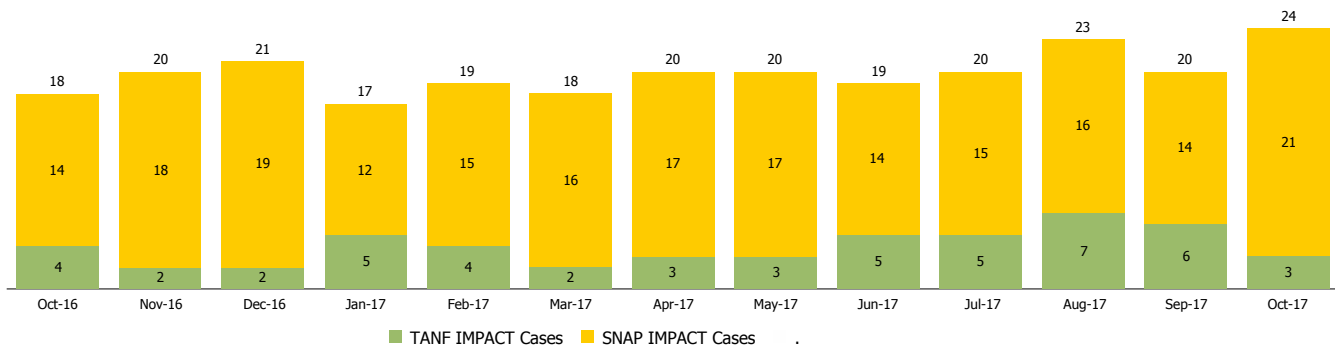
Reporting Month: October 2017

Location: Ripley County

INDIANA MANPOWER PLACEMENT AND COMPREHENSIVE TRAINING (IMPACT)

| | October 2017 | September 2017 | October 2016 | Annual Change |
|---|--------------|----------------|--------------|---------------|
| Number of IMPACT cases | 24 | 20 | 18 | 33.33% |
| Number of TANF IMPACT adults | 3 | 6 | 4 | -25.00% |
| Number of SNAP IMPACT Cases | 21 | 14 | 14 | 50.00% |
| Total number of adults employed | 7 | 2 | 3 | 133.33% |
| Number of TANF IMPACT adults newly employed (within past 30 days) | 1 | 1 | 0 | |
| Number of SNAP IMPACT adults employed | 6 | 1 | 3 | 100.00% |
| Total number of adults ineligible due to employment | 24 | 21 | 22 | 9.09% |
| Number of TANF adults ineligible due to employment | 0 | 0 | 0 | |
| Number of SNAP adults ineligible due to employment | 24 | 21 | 22 | 9.09% |

IMPACT Caseloads
(SNAP, TANF, Total Caseload)



Note:

All data July 2014 and following will be broken out according to the new DFR region structure effective July 1 2014.