



## DIVISION OF FAMILY RESOURCES

# **Pulaski County Monthly Management Report August 2017**

### **State of Indiana**

Eric Holcomb  
Governor

### **Family and Social Services Administration**

Jennifer Walthall, M.D.  
Secretary

### **Division of Family Resources**

Adrienne Shields  
Director

For questions regarding data on this report contact:  
[office.Communications@fssa.IN.gov](mailto:office.Communications@fssa.IN.gov)



## **State of Indiana**

Published September 2017



## DIVISION OF FAMILY RESOURCES

### Monthly Management Report

Reporting Month: August 2017

Location: Pulaski County

#### TEMPORARY ASSISTANCE FOR NEEDY FAMILIES (TANF)

Child-Only and One-Parent Families	Aug 31, 2017	July 2017	August 2016	Annual Change
Number of families receiving TANF Grants	11	11	14	-21.43%
Total number of grant recipients	25	28	25	0.00%
Number of adult grant recipients	1	2	3	-66.67%
Number of child grant recipients	24	26	22	9.09%
Total payments	\$2,382	\$2,382	\$2,107	13.05%
Average payment per case	\$216.55	\$216.55	\$150.50	43.88%
Average payment per recipient	\$95.28	\$85.07	\$84.28	13.05%
Number of cases with benefits reduced to zero	1	1	1	0.00%
Number of recipients with benefits reduced to zero	2	2	2	0.00%
Number of adult recipients with benefit reduced to zero	1	1	1	0.00%
Number of child recipients with benefit reduced to zero	1	1	1	0.00%

Two-Parent Families	Aug 31, 2017	July 2017	August 2016	Annual Change
Number of families receiving TANF Grants	1	1	1	0.00%
Total number of grant recipients	4	5	5	-20.00%
Number of adult grant recipients	2	2	2	0.00%
Number of child grant recipients	2	3	3	-33.33%
Total payments	\$198	\$256	\$256	-22.66%
Average payment per case	\$198.00	\$256.00	\$256.00	-22.66%
Average payment per recipient	\$49.50	\$51.20	\$51.20	-3.32%
Number of cases with benefits reduced to zero	0	0	0	0%
Number of recipients with benefits reduced to zero	0	0	0	0%
Number of adult recipients with benefit reduced to zero	0	0	0	0%
Number of child recipients with benefit reduced to zero	0	0	0	0%

**Note:**

All data July 2014 and following will be broken out according to the new DFR region structure effective July 1 2014.

Source:



## DIVISION OF FAMILY RESOURCES

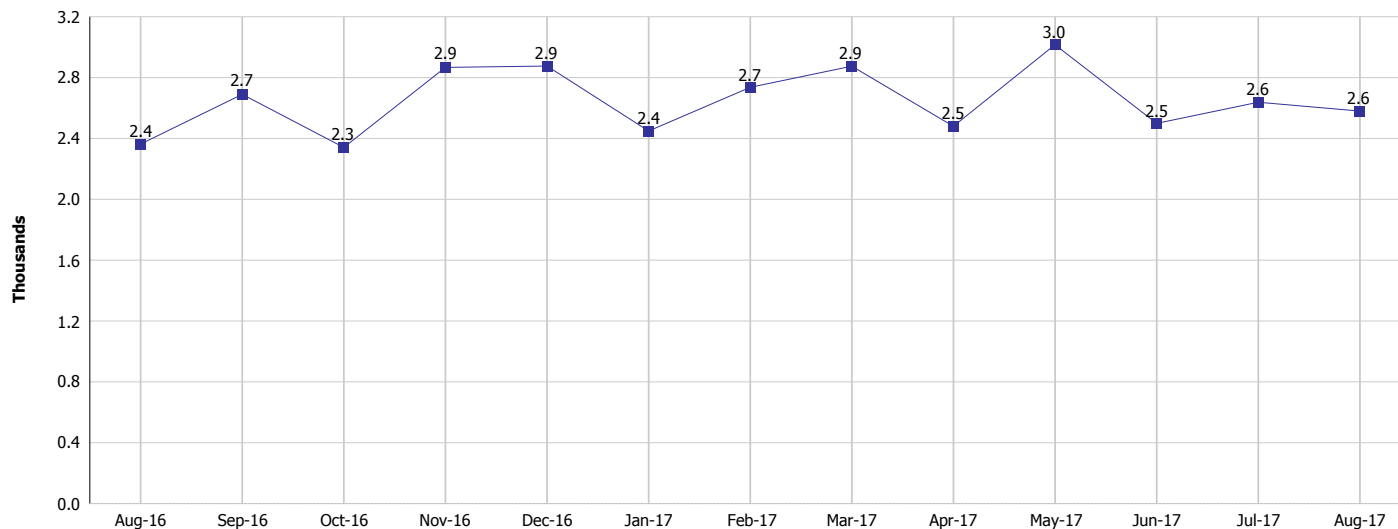
### Monthly Management Report

Reporting Month: August 2017

Location: Pulaski County

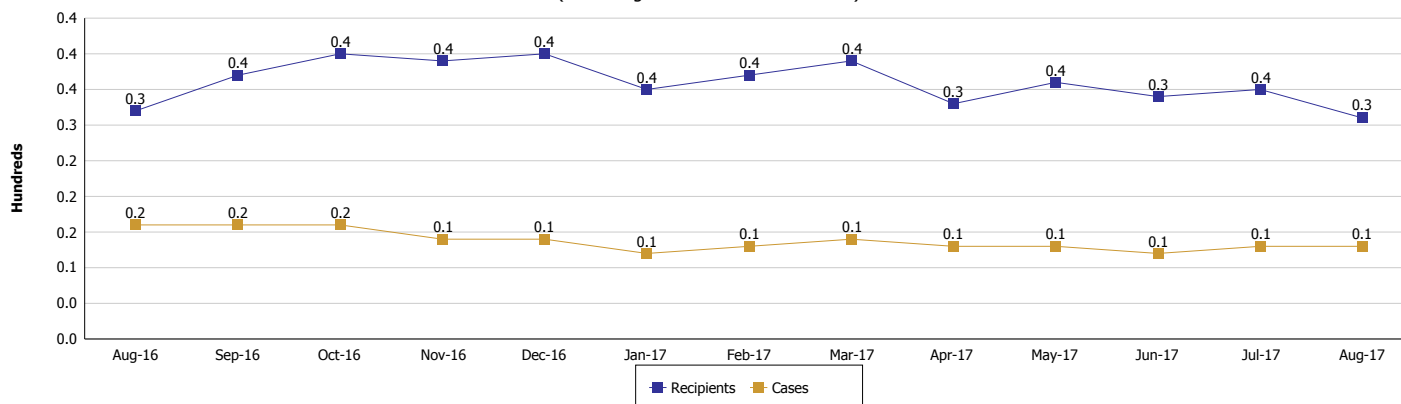
#### TEMPORARY ASSISTANCE FOR NEEDY FAMILIES (TANF)

#### TANF Regular And TANF Two-Parent Cash Assistance



#### TANF Cases and Recipients

(TANF Regular and TANF Two-Parent)



#### Note:

All data July 2014 and following will be broken out according to the new DFR region structure effective July 1 2014.



## DIVISION OF FAMILY RESOURCES

### Monthly Management Report

Reporting Month: August 2017

Location: Pulaski County

#### SUPPLEMENTAL NUTRITION ASSISTANCE PROGRAM (SNAP)

	August 2017	July 2017	August 2016	Annual Change
Total issuance	\$126,922	\$128,742	\$150,104	-15.44%
Number of households receiving SNAP benefits	529	532	597	-11.39%
Number of recipients	1,179	1,165	1,352	-12.80%
Average issuance per household	\$239.93	\$242	\$251.43	-4.57%
Average issuance per recipient	\$107.65	\$110.51	\$111.02	-3.04%

**Note:**

All data July 2014 and following will be broken out according to the new DFR region structure effective July 1 2014.



# DIVISION OF FAMILY RESOURCES

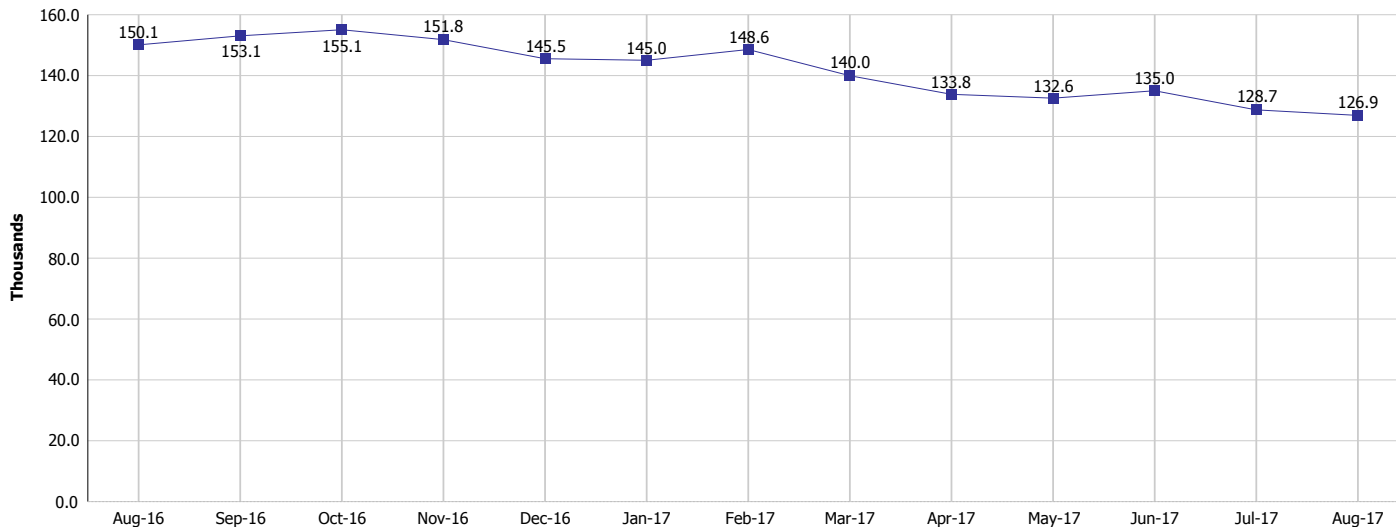
## Monthly Management Report

Reporting Month: August 2017

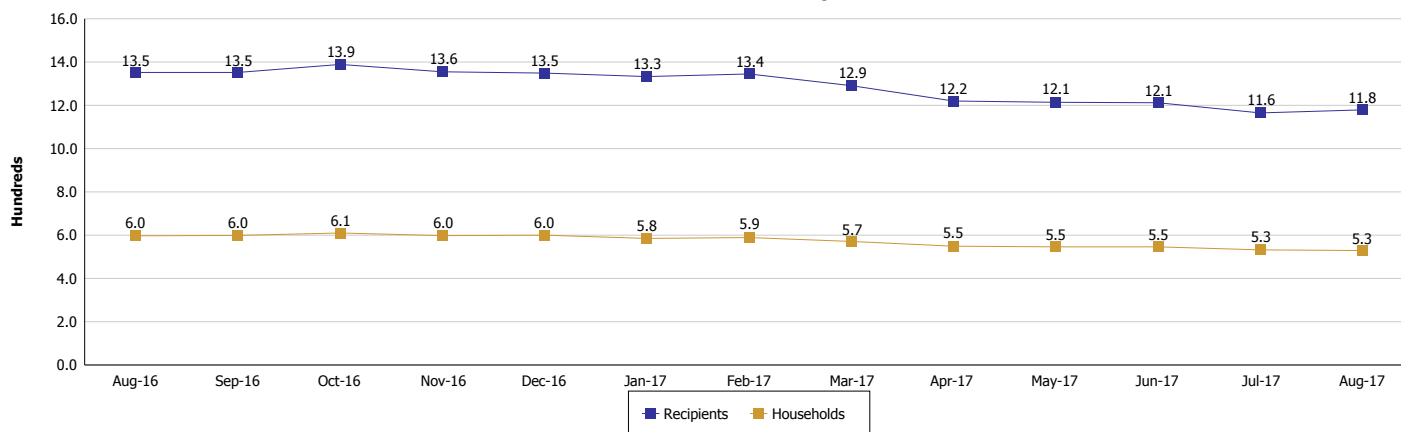
Location: Pulaski County

### SUPPLEMENTAL NUTRITION ASSISTANCE PROGRAM (SNAP)

#### SNAP Issuance



#### SNAP Households and Recipients



#### Note:

All data July 2014 and following will be broken out according to the new DFR region structure effective July 1 2014.



## DIVISION OF FAMILY RESOURCES

### Monthly Management Report

Reporting Month: August 2017

Location: Pulaski County

#### HIP 2.0 and SNAP

	August 2017	July 2017	August 2016	Annual Change
Total HIP 2.0 Members	960	962	874	9.84%
HIP Members also SNAP Recipients	313	306	344	-9.01%
Percentage HIP Members SNAP Recipients	32.6%	31.8%	39.4%	4.80%
HIP Members SNAP ABAWDs	14	10	10	40.00%
Percentage HIP Members SNAP ABAWDs	1.5%	1.0%	1.1%	4.80%

**Note:**

All data July 2014 and following will be broken out according to the new DFR region structure effective July 1 2014.



## DIVISION OF FAMILY RESOURCES

### Monthly Management Report

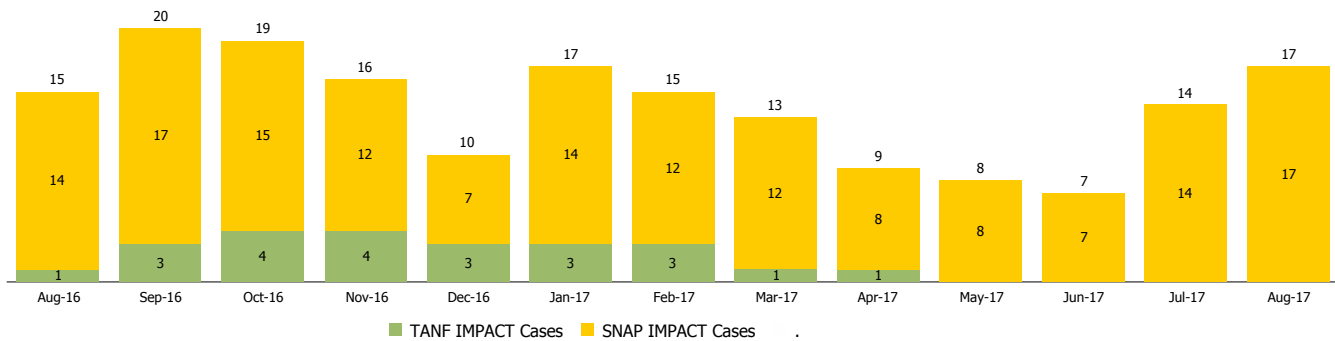
Reporting Month: August 2017

Location: Pulaski County

#### INDIANA MANPOWER PLACEMENT AND COMPREHENSIVE TRAINING (IMPACT)

	August 2017	July 2017	August 2016	Annual Change
Number of IMPACT cases	17	14	15	13.33%
Number of TANF IMPACT adults	0	0	1	-100.00%
Number of SNAP IMPACT Cases	17	14	14	21.43%
Total number of adults employed	2	0	1	100.00%
Number of TANF IMPACT adults newly employed (within past 30 days)	0	0	0	
Number of SNAP IMPACT adults employed	2	0	1	100.00%
Total number of adults ineligible due to employment	10	11	7	42.86%
Number of TANF adults ineligible due to employment	0	0	0	
Number of SNAP adults ineligible due to employment	10	11	7	42.86%

**IMPACT Caseloads**  
(SNAP, TANF, Total Caseload)



**Note:**

All data July 2014 and following will be broken out according to the new DFR region structure effective July 1 2014.