



## DIVISION OF FAMILY RESOURCES

# Porter County Monthly Management Report October 2017

### State of Indiana

Eric Holcomb  
Governor

### Family and Social Services Administration

Jennifer Walthall, M.D.  
Secretary

### Division of Family Resources

Adrienne Shields  
Director

For questions regarding data on this report contact:  
[office.Communications@fssa.IN.gov](mailto:office.Communications@fssa.IN.gov)



## State of Indiana

Published November 2017



## DIVISION OF FAMILY RESOURCES

### Monthly Management Report

Reporting Month: October 2017

Location: Porter County

#### TEMPORARY ASSISTANCE FOR NEEDY FAMILIES (TANF)

Child-Only and One-Parent Families	Oct 31, 2017	September 2017	October 2016	Annual Change
Number of families receiving TANF Grants	79	73	86	-8.14%
Total number of grant recipients	166	151	178	-6.74%
Number of adult grant recipients	35	31	36	-2.78%
Number of child grant recipients	131	120	142	-7.75%
Total payments	\$15,545	\$14,045	\$17,571	-11.53%
Average payment per case	\$196.77	\$192.40	\$204.31	-3.69%
Average payment per recipient	\$93.64	\$93.01	\$98.71	-5.13%
Number of cases with benefits reduced to zero	2	2	1	100.00%
Number of recipients with benefits reduced to zero	4	4	2	100.00%
Number of adult recipients with benefit reduced to zero	1	1	1	0.00%
Number of child recipients with benefit reduced to zero	3	3	1	200.00%

Two-Parent Families	Oct 31, 2017	September 2017	October 2016	Annual Change
Number of families receiving TANF Grants	3	3	4	-25.00%
Total number of grant recipients	16	16	16	0.00%
Number of adult grant recipients	4	4	5	-20.00%
Number of child grant recipients	12	12	11	9.09%
Total payments	\$1,183	\$1,183	\$1,299	-8.93%
Average payment per case	\$394.33	\$394.33	\$324.75	21.43%
Average payment per recipient	\$73.94	\$73.94	\$81.19	-8.93%
Number of cases with benefits reduced to zero	0	0	1	-100.00%
Number of recipients with benefits reduced to zero	0	0	3	-100.00%
Number of adult recipients with benefit reduced to zero	0	0	0	0%
Number of child recipients with benefit reduced to zero	0	0	3	-100.00%

**Note:**

All data July 2014 and following will be broken out according to the new DFR region structure effective July 1 2014.

Source:



# DIVISION OF FAMILY RESOURCES

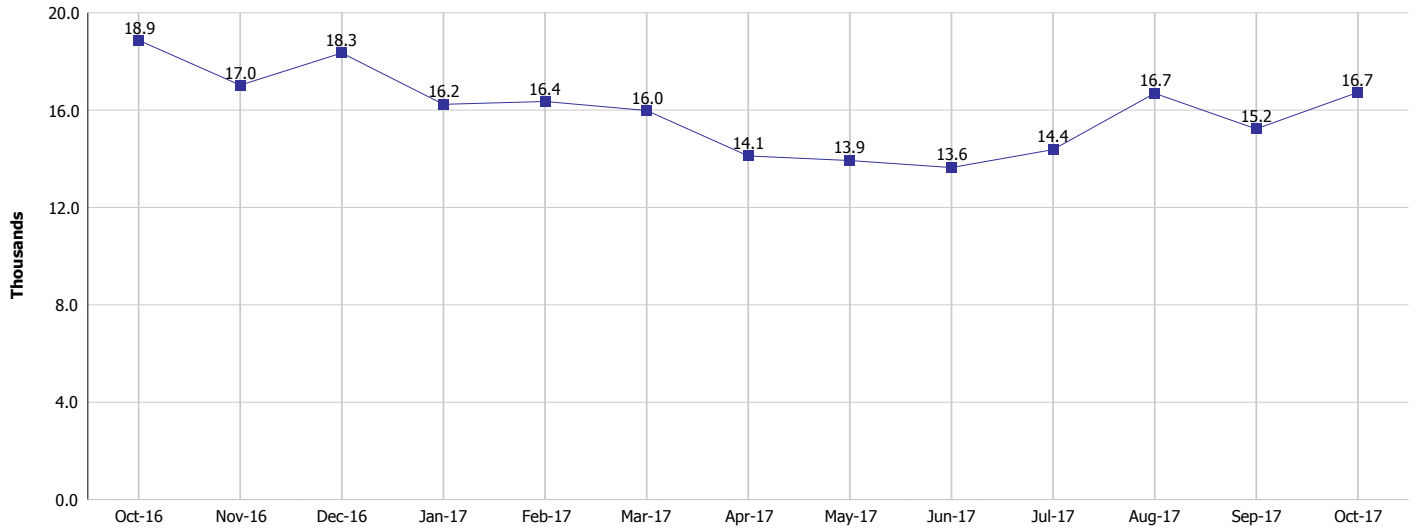
## Monthly Management Report

Reporting Month: October 2017

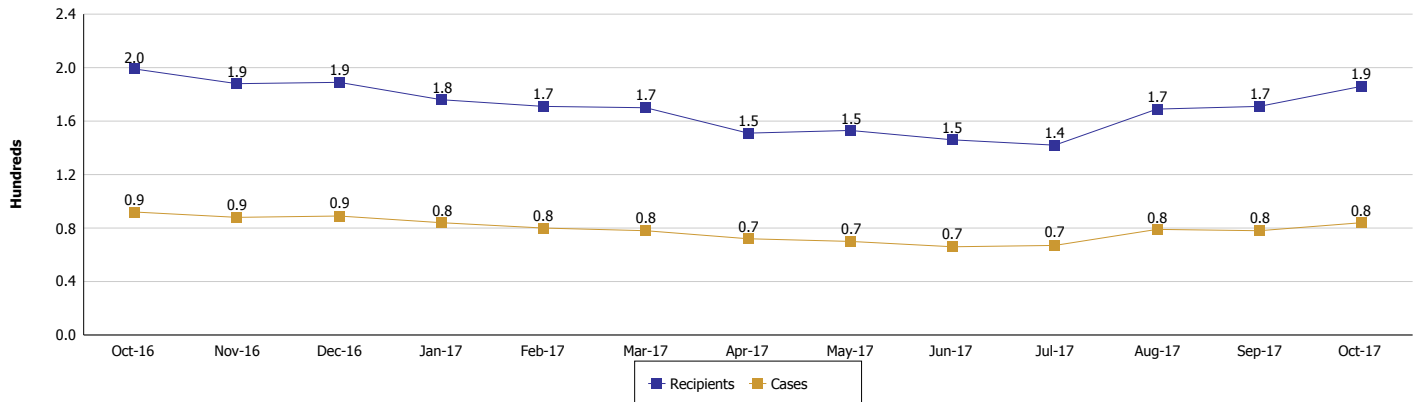
Location: Porter County

### TEMPORARY ASSISTANCE FOR NEEDY FAMILIES (TANF)

#### TANF Regular And TANF Two-Parent Cash Assistance



#### TANF Cases and Recipients (TANF Regular and TANF Two-Parent)



**Note:**

All data July 2014 and following will be broken out according to the new DFR region structure effective July 1 2014.



## DIVISION OF FAMILY RESOURCES

### Monthly Management Report

Reporting Month: October 2017

Location: Porter County

#### SUPPLEMENTAL NUTRITION ASSISTANCE PROGRAM (SNAP)

	October 2017	September 2017	October 2016	Annual Change
Total issuance	\$1,230,105	\$1,246,659	\$1,429,572	-13.95%
Number of households receiving SNAP benefits	4,750	4,738	5,302	-10.41%
Number of recipients	10,221	10,268	11,793	-13.33%
Average issuance per household	\$258.97	\$263.12	\$269.63	-3.95%
Average issuance per recipient	\$120.35	\$121.41	\$121.22	-0.72%

**Note:**

All data July 2014 and following will be broken out according to the new DFR region structure effective July 1 2014.



# DIVISION OF FAMILY RESOURCES

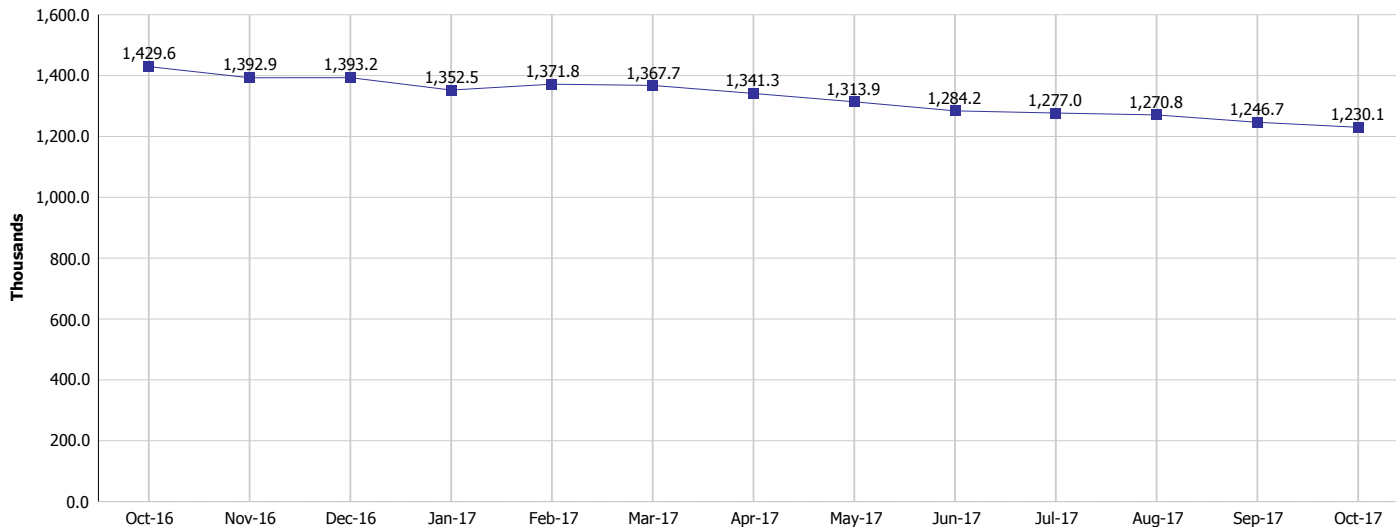
## Monthly Management Report

Reporting Month: October 2017

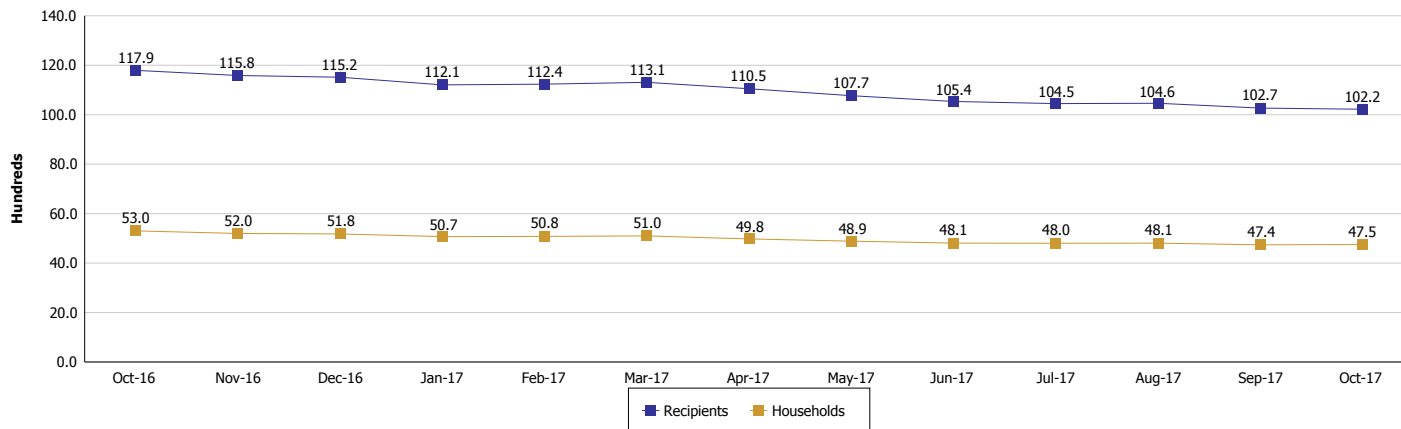
Location: Porter County

### SUPPLEMENTAL NUTRITION ASSISTANCE PROGRAM (SNAP)

#### SNAP Issuance



#### SNAP Households and Recipients



**Note:**

All data July 2014 and following will be broken out according to the new DFR region structure effective July 1 2014.



## DIVISION OF FAMILY RESOURCES

### Monthly Management Report

Reporting Month: October 2017

Location: Porter County

#### HIP 2.0 and SNAP

	October 2017	September 2017	October 2016	Annual Change
Total HIP 2.0 Members	9,143	9,091	8,610	6.19%
HIP Members also SNAP Recipients	2,645	2,638	3,051	-13.31%
Percentage HIP Members SNAP Recipients	28.9%	29.0%	35.4%	0.75%
HIP Members SNAP ABAWDs	85	89	124	-31.45%
Percentage HIP Members SNAP ABAWDs	0.9%	1.0%	1.4%	0.75%

**Note:**

All data July 2014 and following will be broken out according to the new DFR region structure effective July 1 2014.



## DIVISION OF FAMILY RESOURCES

### Monthly Management Report

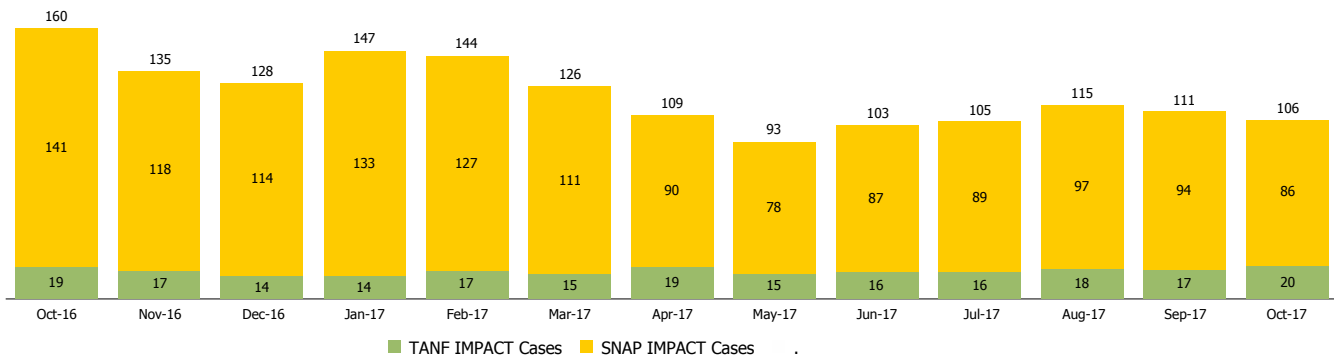
Reporting Month: October 2017

Location: Porter County

#### INDIANA MANPOWER PLACEMENT AND COMPREHENSIVE TRAINING (IMPACT)

	October 2017	September 2017	October 2016	Annual Change
Number of IMPACT cases	106	111	160	-33.75%
Number of TANF IMPACT adults	20	17	19	5.26%
Number of SNAP IMPACT Cases	86	94	141	-39.01%
Total number of adults employed	56	20	15	273.33%
Number of TANF IMPACT adults newly employed (within past 30 days)	4	0	3	33.33%
Number of SNAP IMPACT adults employed	52	20	12	333.33%
Total number of adults ineligible due to employment	76	84	75	1.33%
Number of TANF adults ineligible due to employment	0	0	1	-100.00%
Number of SNAP adults ineligible due to employment	76	84	74	2.70%

**IMPACT Caseloads**  
(SNAP, TANF, Total Caseload)



**Note:**

All data July 2014 and following will be broken out according to the new DFR region structure effective July 1 2014.