



## DIVISION OF FAMILY RESOURCES

# Perry County Monthly Management Report July 2017

### State of Indiana

Eric Holcomb  
Governor

### Family and Social Services Administration

Jennifer Walthall, M.D.  
Secretary

### Division of Family Resources

Adrienne Shields  
Director

For questions regarding data on this report contact:  
[office.Communications@fssa.IN.gov](mailto:office.Communications@fssa.IN.gov)



## State of Indiana

Published August 2017



## DIVISION OF FAMILY RESOURCES

### Monthly Management Report

Reporting Month: July 2017

Location: Perry County

#### TEMPORARY ASSISTANCE FOR NEEDY FAMILIES (TANF)

Child-Only and One-Parent Families	Jul 31, 2017	June 2017	July 2016	Annual Change
Number of families receiving TANF Grants	16	17	19	-15.79%
Total number of grant recipients	31	34	40	-22.50%
Number of adult grant recipients	2	3	6	-66.67%
Number of child grant recipients	29	31	34	-14.71%
Total payments	\$2,936	\$3,314	\$3,794	-22.61%
Average payment per case	\$183.50	\$194.94	\$199.68	-8.10%
Average payment per recipient	\$94.71	\$97.47	\$94.85	-0.15%
Number of cases with benefits reduced to zero	0	0	0	0%
Number of recipients with benefits reduced to zero	0	0	0	0%
Number of adult recipients with benefit reduced to zero	0	0	0	0%
Number of child recipients with benefit reduced to zero	0	0	0	0%

Two-Parent Families	Jul 31, 2017	June 2017	July 2016	Annual Change
Number of families receiving TANF Grants	1	1	1	0.00%
Total number of grant recipients	1	1	1	0.00%
Number of adult grant recipients	0	0	0	0%
Number of child grant recipients	1	1	1	0.00%
Total payments	\$139	\$139	\$139	0.00%
Average payment per case	\$139.00	\$139.00	\$139.00	0.00%
Average payment per recipient	\$139.00	\$139.00	\$139.00	0.00%
Number of cases with benefits reduced to zero	0	0	0	0%
Number of recipients with benefits reduced to zero	0	0	0	0%
Number of adult recipients with benefit reduced to zero	0	0	0	0%
Number of child recipients with benefit reduced to zero	0	0	0	0%

**Note:**

All data July 2014 and following will be broken out according to the new DFR region structure effective July 1 2014.

Source:



## DIVISION OF FAMILY RESOURCES

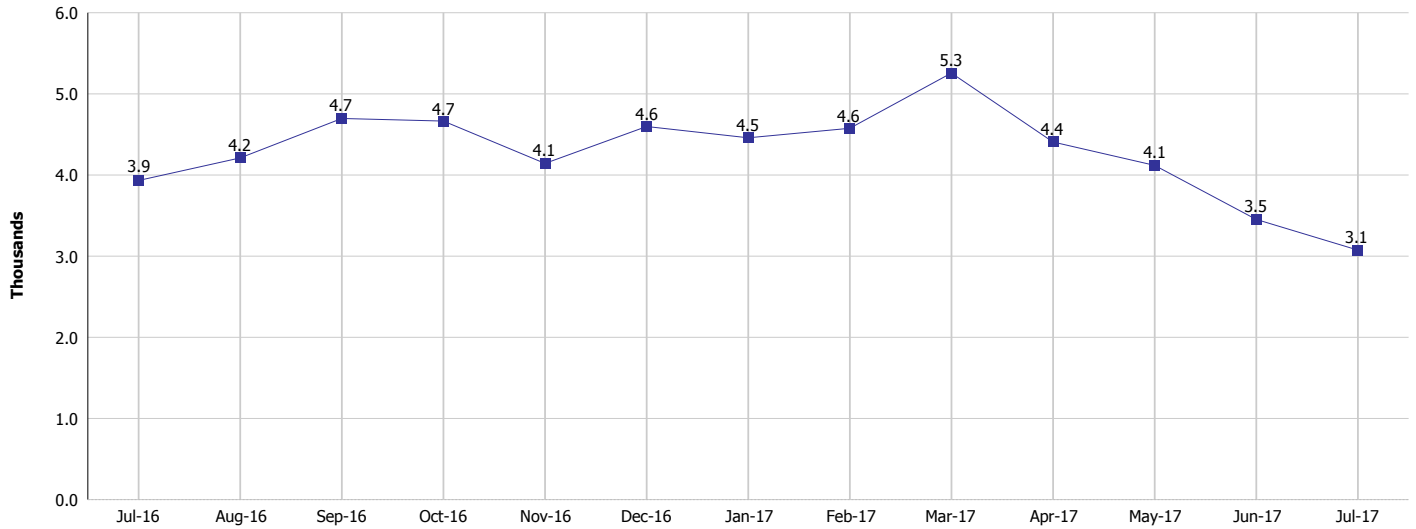
### Monthly Management Report

Reporting Month: July 2017

Location: Perry County

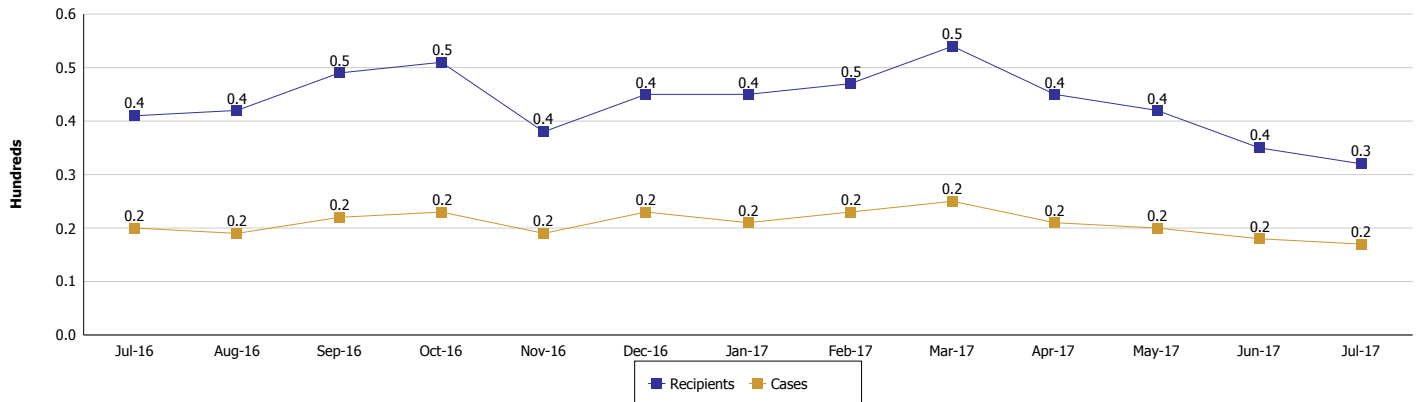
#### TEMPORARY ASSISTANCE FOR NEEDY FAMILIES (TANF)

#### TANF Regular And TANF Two-Parent Cash Assistance



#### TANF Cases and Recipients

(TANF Regular and TANF Two-Parent)



#### Note:

All data July 2014 and following will be broken out according to the new DFR region structure effective July 1 2014.



## DIVISION OF FAMILY RESOURCES

### Monthly Management Report

Reporting Month: July 2017

Location: Perry County

#### SUPPLEMENTAL NUTRITION ASSISTANCE PROGRAM (SNAP)

	July 2017	June 2017	July 2016	Annual Change
Total issuance	\$182,618	\$182,891	\$192,654	-5.21%
Number of households receiving SNAP benefits	716	727	753	-4.91%
Number of recipients	1,577	1,605	1,698	-7.13%
Average issuance per household	\$255.05	\$251.57	\$255.85	-0.31%
Average issuance per recipient	\$115.8	\$113.95	\$113.46	2.06%

**Note:**

All data July 2014 and following will be broken out according to the new DFR region structure effective July 1 2014.



# DIVISION OF FAMILY RESOURCES

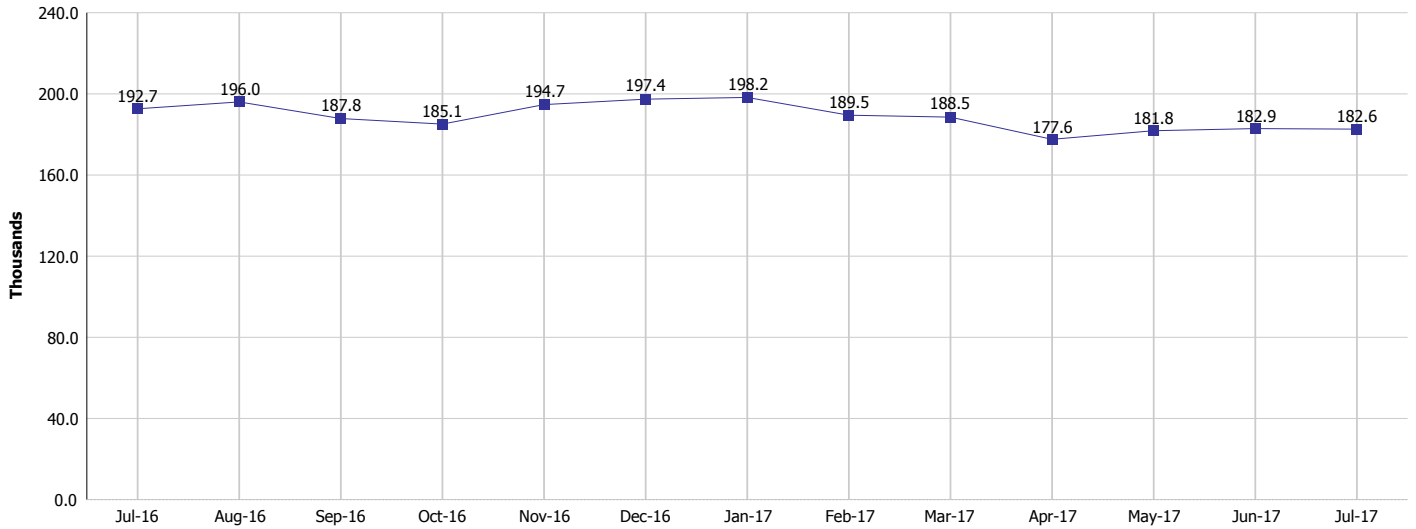
## Monthly Management Report

Reporting Month: July 2017

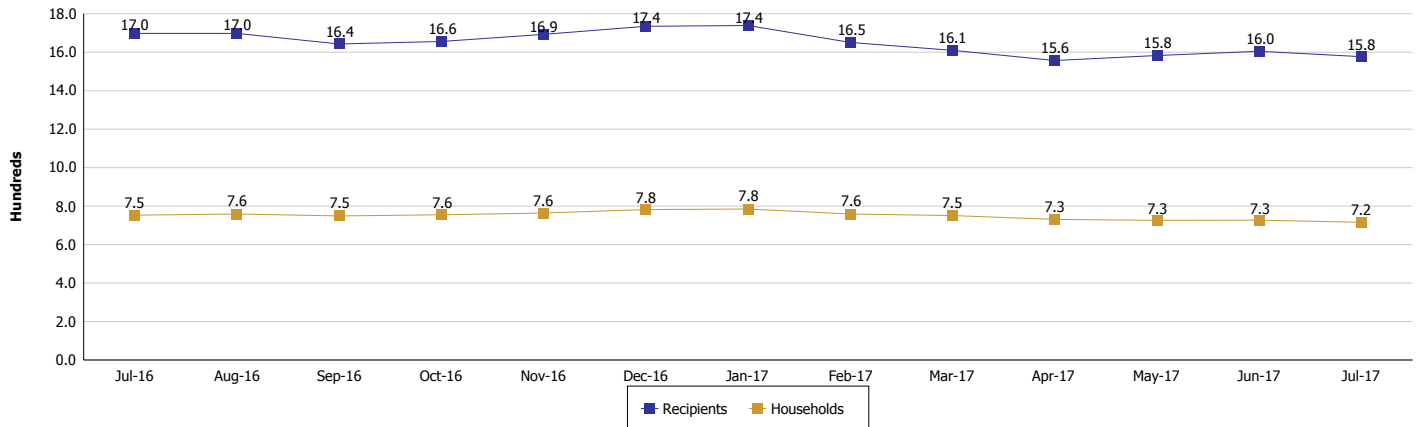
Location: Perry County

### SUPPLEMENTAL NUTRITION ASSISTANCE PROGRAM (SNAP)

#### SNAP Issuance



#### SNAP Households and Recipients



#### Note:

All data July 2014 and following will be broken out according to the new DFR region structure effective July 1 2014.



## DIVISION OF FAMILY RESOURCES

### Monthly Management Report

Reporting Month: July 2017

Location: Perry County

#### HIP 2.0 and SNAP

	July 2017	June 2017	July 2016	Annual Change
Total HIP 2.0 Members	1,039	1,040	958	8.46%
HIP Members also SNAP Recipients	402	413	398	1.01%
Percentage HIP Members SNAP Recipients	38.7%	39.7%	41.5%	6.19%
HIP Members SNAP ABAWDs	18	11	18	0.00%
Percentage HIP Members SNAP ABAWDs	1.7%	1.1%	1.9%	6.19%

**Note:**

All data July 2014 and following will be broken out according to the new DFR region structure effective July 1 2014.



## DIVISION OF FAMILY RESOURCES

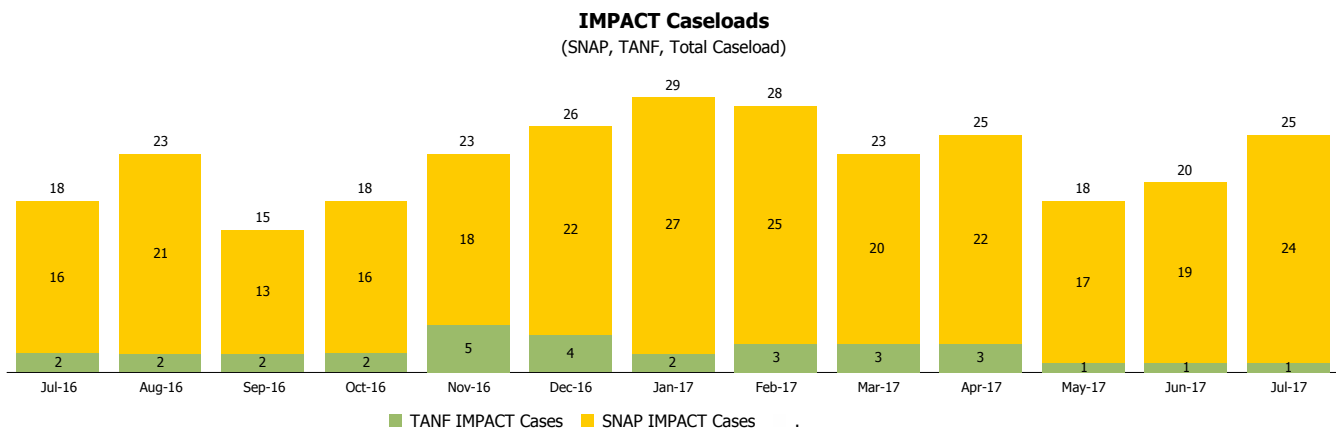
### Monthly Management Report

Reporting Month: July 2017

Location: Perry County

#### INDIANA MANPOWER PLACEMENT AND COMPREHENSIVE TRAINING (IMPACT)

	July 2017	June 2017	July 2016	Annual Change
Number of IMPACT cases	25	20	18	38.89%
Number of TANF IMPACT adults	1	1	2	-50.00%
Number of SNAP IMPACT Cases	24	19	16	50.00%
Total number of adults employed	4	3	2	100.00%
Number of TANF IMPACT adults newly employed (within past 30 days)	0	0	1	-100.00%
Number of SNAP IMPACT adults employed	4	3	1	300.00%
Total number of adults ineligible due to employment	13	8	20	-35.00%
Number of TANF adults ineligible due to employment	0	0	0	
Number of SNAP adults ineligible due to employment	13	8	20	-35.00%



**Note:**

All data July 2014 and following will be broken out according to the new DFR region structure effective July 1 2014.