



DIVISION OF FAMILY RESOURCES

Montgomery County Monthly Management Report July 2017

State of Indiana

Eric Holcomb
Governor

Family and Social Services Administration

Jennifer Walthall, M.D.
Secretary

Division of Family Resources

Adrienne Shields
Director

For questions regarding data on this report contact:
office.Communications@fssa.IN.gov



State of Indiana

Published August 2017



DIVISION OF FAMILY RESOURCES

Monthly Management Report

Reporting Month: July 2017

Location: Montgomery County

TEMPORARY ASSISTANCE FOR NEEDY FAMILIES (TANF)

Child-Only and One-Parent Families	Jul 31, 2017	June 2017	July 2016	Annual Change
Number of families receiving TANF Grants	28	30	32	-12.50%
Total number of grant recipients	41	42	67	-38.81%
Number of adult grant recipients	7	6	10	-30.00%
Number of child grant recipients	34	36	57	-40.35%
Total payments	\$4,468	\$4,485	\$5,660	-21.06%
Average payment per case	\$159.57	\$149.50	\$176.88	-9.78%
Average payment per recipient	\$108.98	\$106.79	\$84.48	29.00%
Number of cases with benefits reduced to zero	1	2	3	-66.67%
Number of recipients with benefits reduced to zero	1	6	6	-83.33%
Number of adult recipients with benefit reduced to zero	0	1	1	-100.00%
Number of child recipients with benefit reduced to zero	1	5	5	-80.00%

Two-Parent Families	Jul 31, 2017	June 2017	July 2016	Annual Change
Number of families receiving TANF Grants	6	4	2	200.00%
Total number of grant recipients	27	17	10	170.00%
Number of adult grant recipients	10	6	4	150.00%
Number of child grant recipients	17	11	6	183.33%
Total payments	\$1,092	\$580	\$427	155.74%
Average payment per case	\$182.00	\$145.00	\$213.50	-14.75%
Average payment per recipient	\$40.44	\$34.12	\$42.70	-5.28%
Number of cases with benefits reduced to zero	0	0	1	-100.00%
Number of recipients with benefits reduced to zero	0	0	2	-100.00%
Number of adult recipients with benefit reduced to zero	0	0	1	-100.00%
Number of child recipients with benefit reduced to zero	0	0	1	-100.00%

Note:

All data July 2014 and following will be broken out according to the new DFR region structure effective July 1 2014.

Source:



DIVISION OF FAMILY RESOURCES

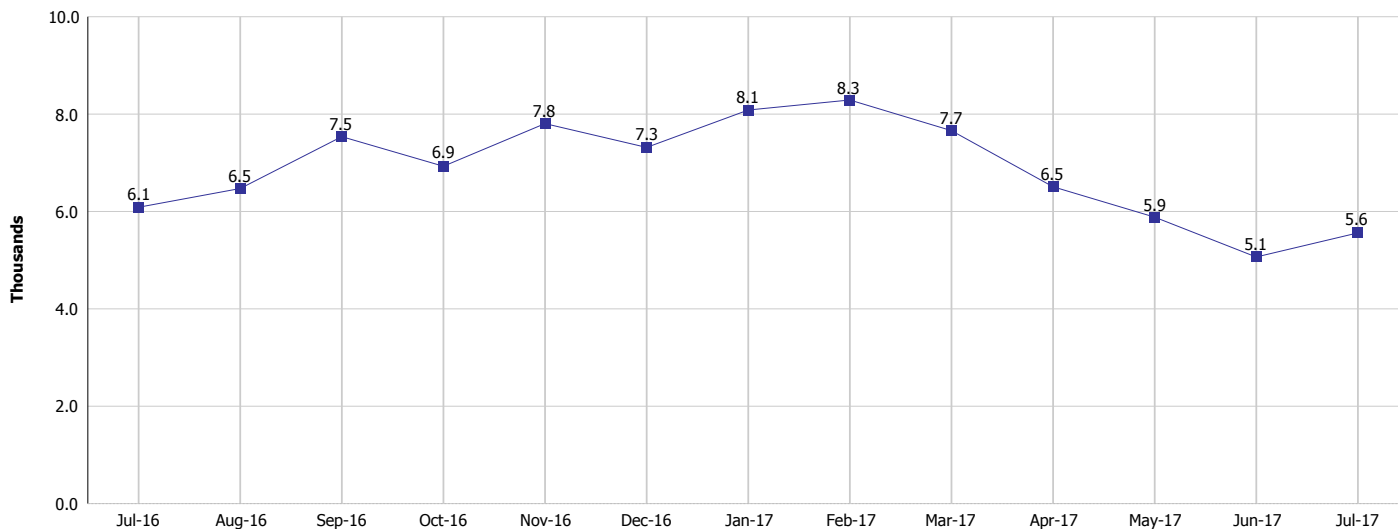
Monthly Management Report

Reporting Month: July 2017

Location: Montgomery County

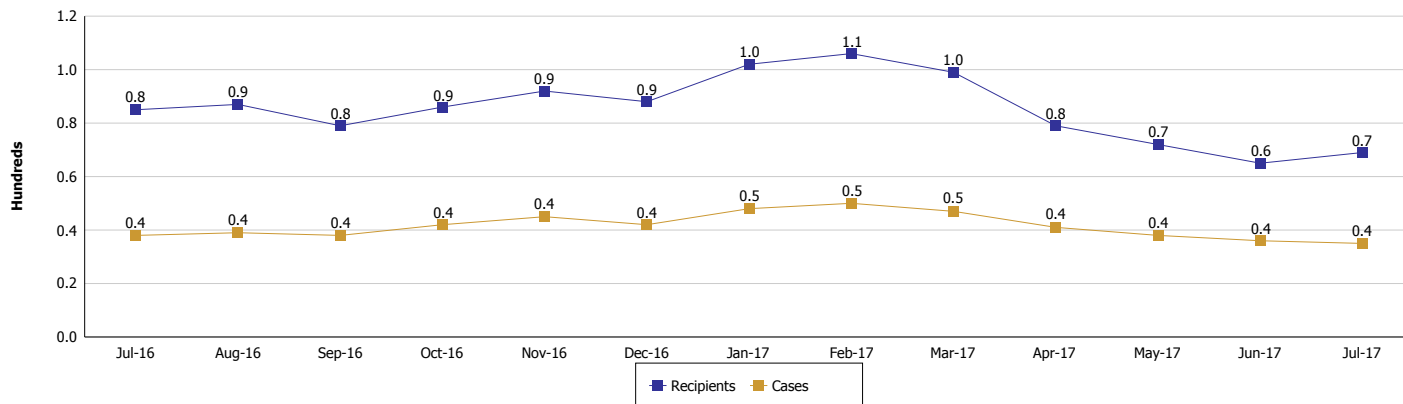
TEMPORARY ASSISTANCE FOR NEEDY FAMILIES (TANF)

TANF Regular And TANF Two-Parent Cash Assistance



TANF Cases and Recipients

(TANF Regular and TANF Two-Parent)



Note:

All data July 2014 and following will be broken out according to the new DFR region structure effective July 1 2014.



DIVISION OF FAMILY RESOURCES

Monthly Management Report

Reporting Month: July 2017

Location: Montgomery County

SUPPLEMENTAL NUTRITION ASSISTANCE PROGRAM (SNAP)

	July 2017	June 2017	July 2016	Annual Change
Total issuance	\$376,807	\$386,722	\$412,329	-8.61%
Number of households receiving SNAP benefits	1,473	1,492	1,583	-6.95%
Number of recipients	3,294	3,345	3,586	-8.14%
Average issuance per household	\$255.81	\$259.2	\$260.47	-1.79%
Average issuance per recipient	\$114.39	\$115.61	\$114.98	-0.51%

Note:

All data July 2014 and following will be broken out according to the new DFR region structure effective July 1 2014.



DIVISION OF FAMILY RESOURCES

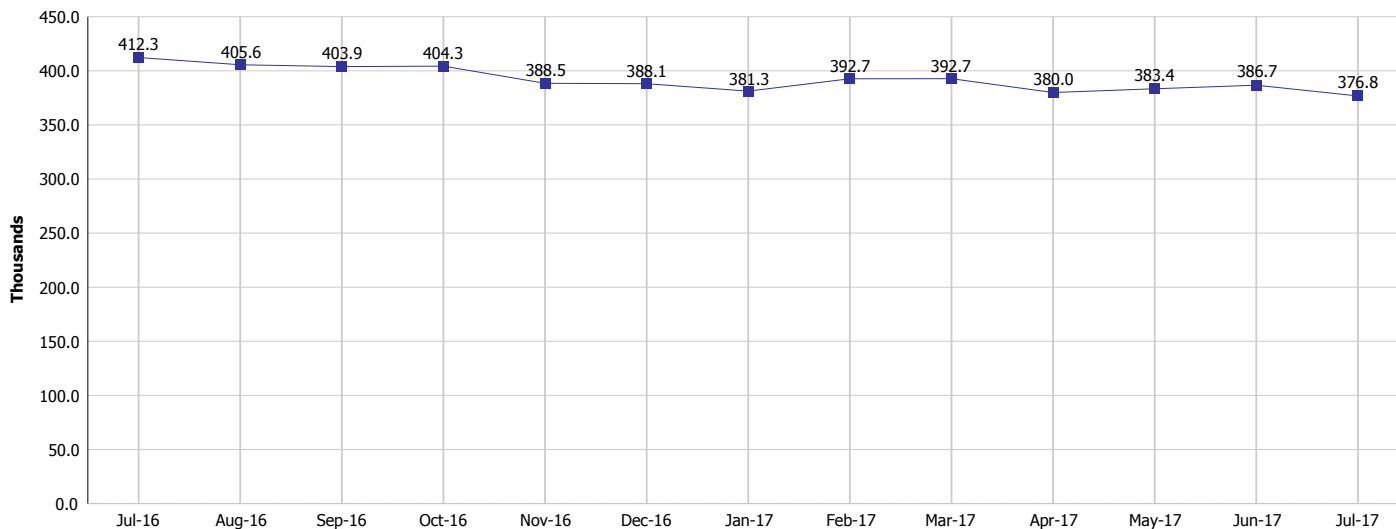
Monthly Management Report

Reporting Month: July 2017

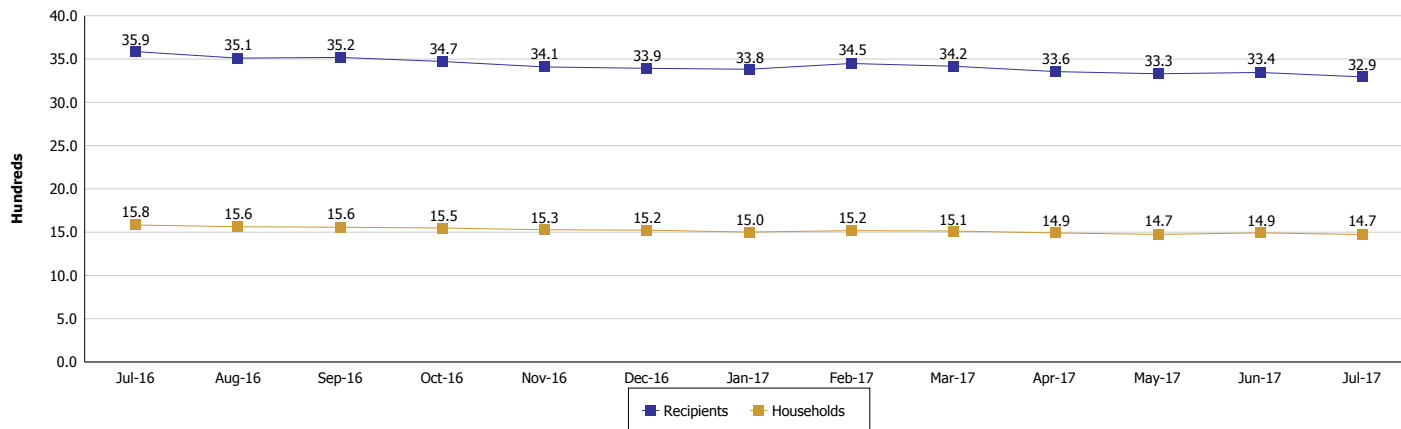
Location: Montgomery County

SUPPLEMENTAL NUTRITION ASSISTANCE PROGRAM (SNAP)

SNAP Issuance



SNAP Households and Recipients



Note:

All data July 2014 and following will be broken out according to the new DFR region structure effective July 1 2014.



DIVISION OF FAMILY RESOURCES

Monthly Management Report

Reporting Month: July 2017

Location: Montgomery County

HIP 2.0 and SNAP

	July 2017	June 2017	July 2016	Annual Change
Total HIP 2.0 Members	2,245	2,236	1,969	14.02%
HIP Members also SNAP Recipients	688	709	737	-6.65%
Percentage HIP Members SNAP Recipients	30.6%	31.7%	37.4%	8.71%
HIP Members SNAP ABAWDs	24	15	14	71.43%
Percentage HIP Members SNAP ABAWDs	1.1%	0.7%	0.7%	8.71%

Note:

All data July 2014 and following will be broken out according to the new DFR region structure effective July 1 2014.



DIVISION OF FAMILY RESOURCES

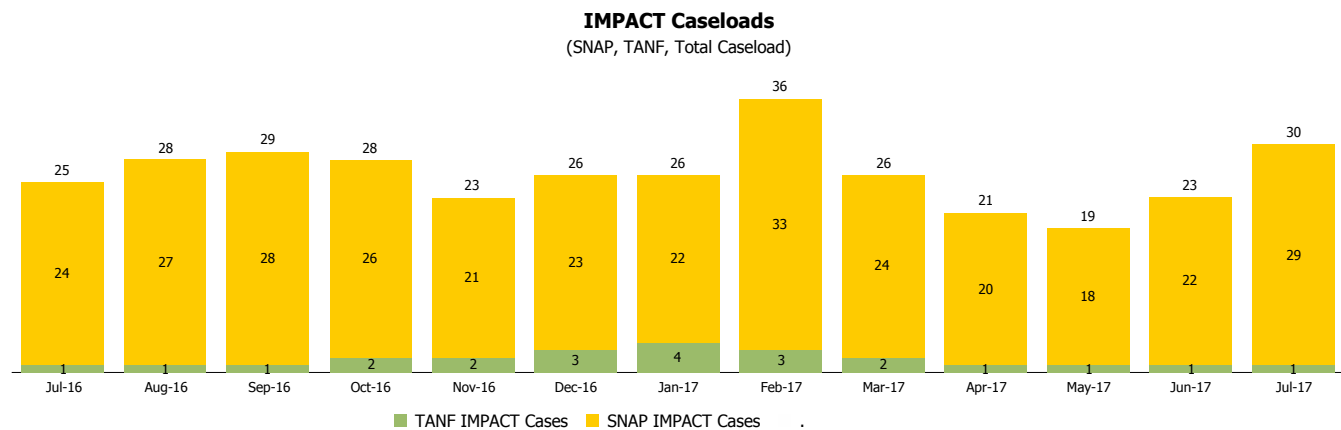
Monthly Management Report

Reporting Month: July 2017

Location: Montgomery County

INDIANA MANPOWER PLACEMENT AND COMPREHENSIVE TRAINING (IMPACT)

	July 2017	June 2017	July 2016	Annual Change
Number of IMPACT cases	30	23	25	20.00%
Number of TANF IMPACT adults	1	1	1	0.00%
Number of SNAP IMPACT Cases	29	22	24	20.83%
Total number of adults employed	4	5	13	-69.23%
Number of TANF IMPACT adults newly employed (within past 30 days)	0	0	0	
Number of SNAP IMPACT adults employed	4	5	13	-69.23%
Total number of adults ineligible due to employment	21	29	33	-36.36%
Number of TANF adults ineligible due to employment	0	0	0	
Number of SNAP adults ineligible due to employment	21	29	33	-36.36%



Note:

All data July 2014 and following will be broken out according to the new DFR region structure effective July 1 2014.