



## DIVISION OF FAMILY RESOURCES

# Monroe County Monthly Management Report October 2017

### State of Indiana

Eric Holcomb  
Governor

### Family and Social Services Administration

Jennifer Walthall, M.D.  
Secretary

### Division of Family Resources

Adrienne Shields  
Director

For questions regarding data on this report contact:  
[office.Communications@fssa.IN.gov](mailto:office.Communications@fssa.IN.gov)



## State of Indiana

Published November 2017



## DIVISION OF FAMILY RESOURCES

### Monthly Management Report

Reporting Month: October 2017

Location: Monroe County

#### TEMPORARY ASSISTANCE FOR NEEDY FAMILIES (TANF)

Child-Only and One-Parent Families	Oct 31, 2017	September 2017	October 2016	Annual Change
Number of families receiving TANF Grants	62	65	71	-12.68%
Total number of grant recipients	137	140	153	-10.46%
Number of adult grant recipients	16	17	21	-23.81%
Number of child grant recipients	121	123	132	-8.33%
Total payments	\$12,629	\$12,525	\$13,242	-4.63%
Average payment per case	\$203.69	\$192.69	\$186.51	9.21%
Average payment per recipient	\$92.18	\$89.46	\$86.55	6.51%
Number of cases with benefits reduced to zero	1	2	2	-50.00%
Number of recipients with benefits reduced to zero	4	5	2	100.00%
Number of adult recipients with benefit reduced to zero	1	1	0	0%
Number of child recipients with benefit reduced to zero	3	4	2	50.00%

Two-Parent Families	Oct 31, 2017	September 2017	October 2016	Annual Change
Number of families receiving TANF Grants	5	5	7	-28.57%
Total number of grant recipients	13	13	20	-35.00%
Number of adult grant recipients	2	2	6	-66.67%
Number of child grant recipients	11	11	14	-21.43%
Total payments	\$684	\$684	\$1,253	-45.41%
Average payment per case	\$136.80	\$136.80	\$179.00	-23.58%
Average payment per recipient	\$52.62	\$52.62	\$62.65	-16.02%
Number of cases with benefits reduced to zero	0	0	3	-100.00%
Number of recipients with benefits reduced to zero	0	0	7	-100.00%
Number of adult recipients with benefit reduced to zero	0	0	3	-100.00%
Number of child recipients with benefit reduced to zero	0	0	4	-100.00%

**Note:**

All data July 2014 and following will be broken out according to the new DFR region structure effective July 1 2014.

Source:



## DIVISION OF FAMILY RESOURCES

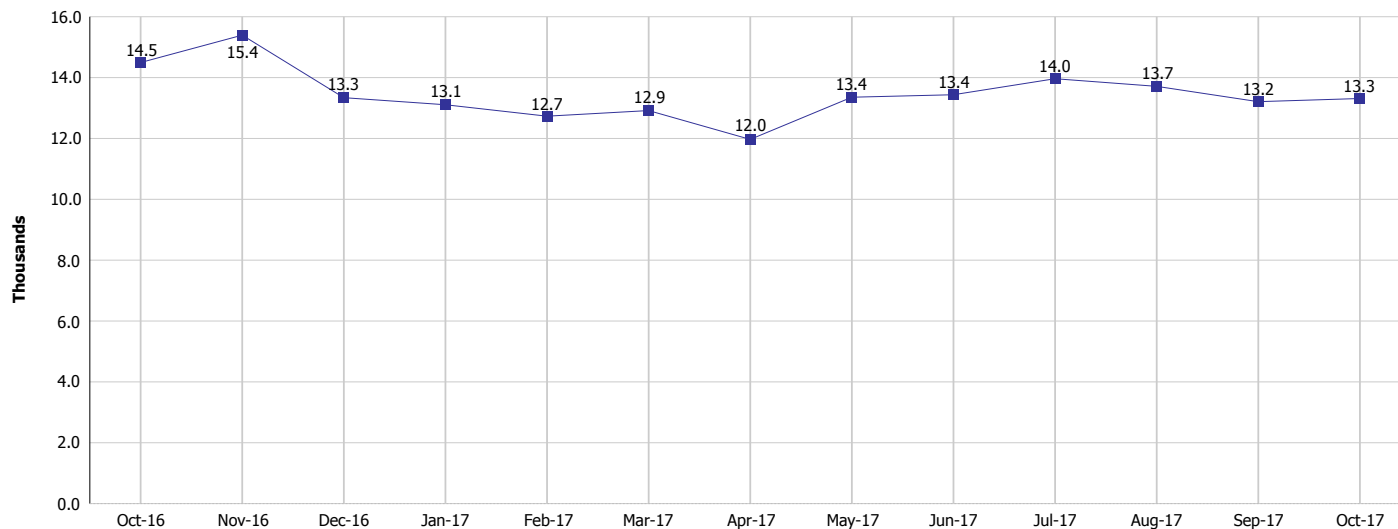
### Monthly Management Report

Reporting Month: October 2017

Location: Monroe County

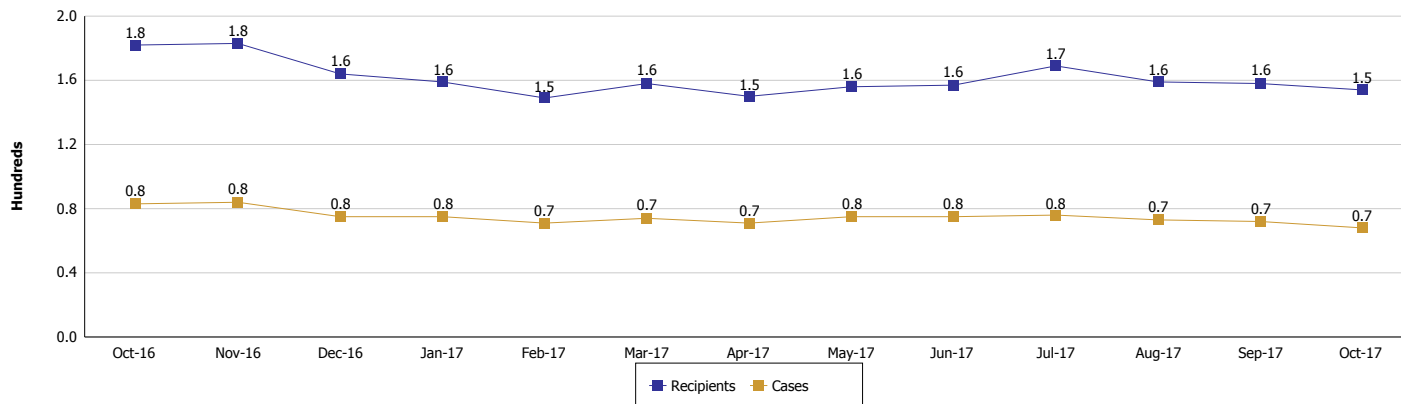
#### TEMPORARY ASSISTANCE FOR NEEDY FAMILIES (TANF)

#### TANF Regular And TANF Two-Parent Cash Assistance



#### TANF Cases and Recipients

(TANF Regular and TANF Two-Parent)



#### Note:

All data July 2014 and following will be broken out according to the new DFR region structure effective July 1 2014.



## DIVISION OF FAMILY RESOURCES

### Monthly Management Report

Reporting Month: October 2017

Location: Monroe County

#### SUPPLEMENTAL NUTRITION ASSISTANCE PROGRAM (SNAP)

	October 2017	September 2017	October 2016	Annual Change
Total issuance	\$921,448	\$929,750	\$1,074,766	-14.27%
Number of households receiving SNAP benefits	3,930	3,942	4,368	-10.03%
Number of recipients	7,839	7,905	8,972	-12.63%
Average issuance per household	\$234.47	\$235.86	\$246.05	-4.71%
Average issuance per recipient	\$117.55	\$117.62	\$119.79	-1.87%

**Note:**

All data July 2014 and following will be broken out according to the new DFR region structure effective July 1 2014.



# DIVISION OF FAMILY RESOURCES

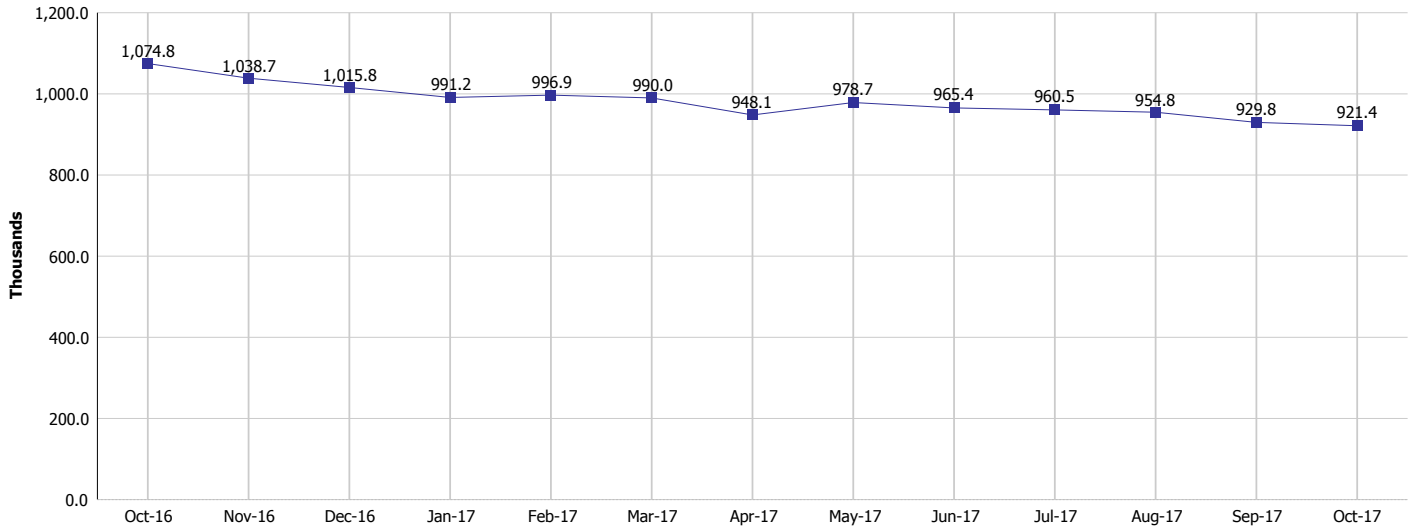
## Monthly Management Report

Reporting Month: October 2017

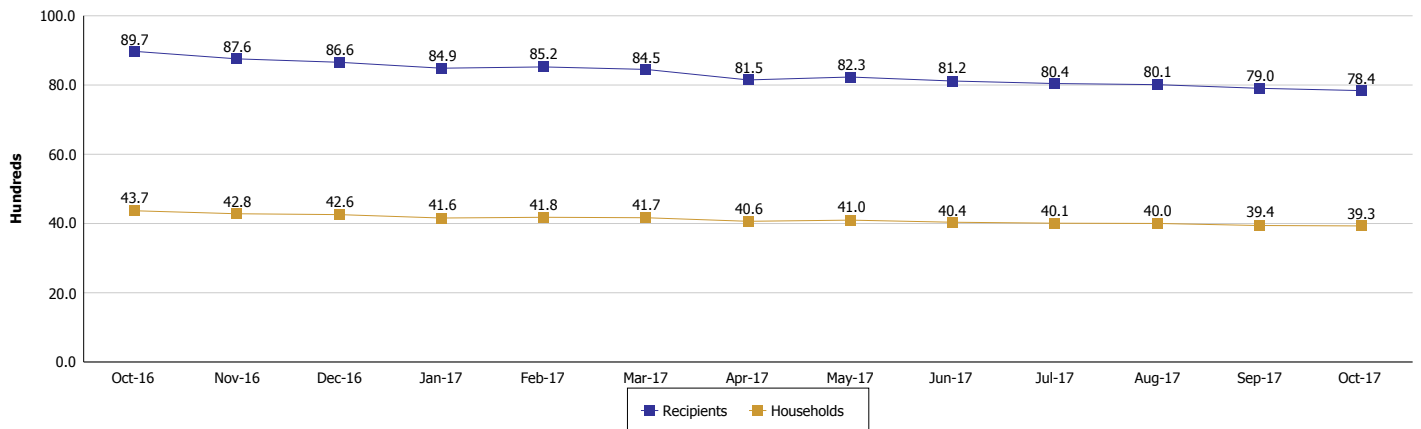
Location: Monroe County

### SUPPLEMENTAL NUTRITION ASSISTANCE PROGRAM (SNAP)

#### SNAP Issuance



#### SNAP Households and Recipients



**Note:**

All data July 2014 and following will be broken out according to the new DFR region structure effective July 1 2014.



## DIVISION OF FAMILY RESOURCES

### Monthly Management Report

Reporting Month: October 2017

Location: Monroe County

#### HIP 2.0 and SNAP

	October 2017	September 2017	October 2016	Annual Change
Total HIP 2.0 Members	7,920	7,908	7,908	0.15%
HIP Members also SNAP Recipients	2,134	2,173	2,432	-12.25%
Percentage HIP Members SNAP Recipients	26.9%	27.5%	30.8%	-3.24%
HIP Members SNAP ABAWDs	62	60	115	-46.09%
Percentage HIP Members SNAP ABAWDs	0.8%	0.8%	1.5%	-3.24%

**Note:**

All data July 2014 and following will be broken out according to the new DFR region structure effective July 1 2014.



## DIVISION OF FAMILY RESOURCES

### Monthly Management Report

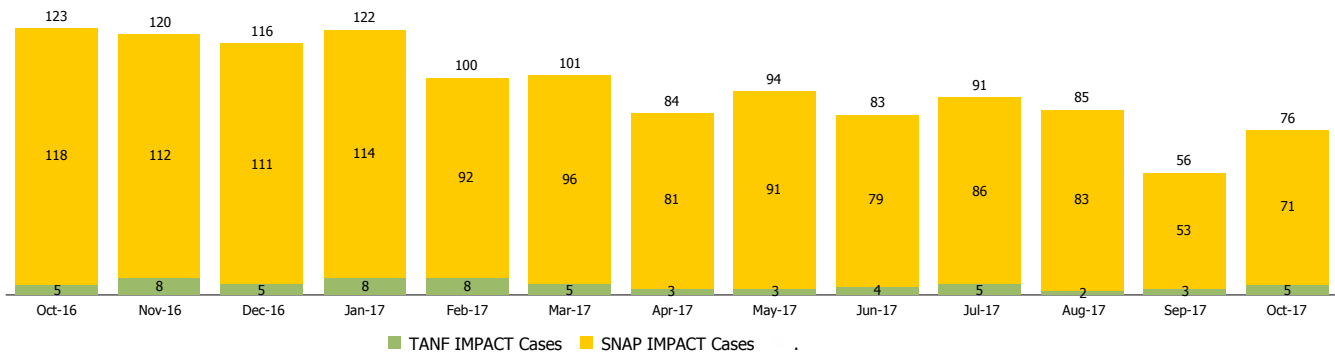
Reporting Month: October 2017

Location: Monroe County

#### INDIANA MANPOWER PLACEMENT AND COMPREHENSIVE TRAINING (IMPACT)

	October 2017	September 2017	October 2016	Annual Change
Number of IMPACT cases	76	56	123	-38.21%
Number of TANF IMPACT adults	5	3	5	0.00%
Number of SNAP IMPACT Cases	71	53	118	-39.83%
Total number of adults employed	34	18	22	54.55%
Number of TANF IMPACT adults newly employed (within past 30 days)	1	1	1	0.00%
Number of SNAP IMPACT adults employed	33	17	21	57.14%
Total number of adults ineligible due to employment	72	82	55	30.91%
Number of TANF adults ineligible due to employment	0	0	0	
Number of SNAP adults ineligible due to employment	72	82	55	30.91%

**IMPACT Caseloads**  
(SNAP, TANF, Total Caseload)



**Note:**

All data July 2014 and following will be broken out according to the new DFR region structure effective July 1 2014.