



DIVISION OF FAMILY RESOURCES

Miami County Monthly Management Report November 2017

State of Indiana

Eric Holcomb
Governor

Family and Social Services Administration

Jennifer Walthall, M.D.
Secretary

Division of Family Resources

Adrienne Shields
Director

For questions regarding data on this report contact:
office.Communications@fssa.IN.gov



State of Indiana

Published December 2017



DIVISION OF FAMILY RESOURCES

Monthly Management Report

Reporting Month: November 2017

Location: Miami County

TEMPORARY ASSISTANCE FOR NEEDY FAMILIES (TANF)

Child-Only and One-Parent Families	Nov 30, 2017	October 2017	November 2016	Annual Change
Number of families receiving TANF Grants	36	38	40	-10.00%
Total number of grant recipients	69	73	80	-13.75%
Number of adult grant recipients	6	7	10	-40.00%
Number of child grant recipients	63	66	70	-10.00%
Total payments	\$6,464	\$6,885	\$9,280	-30.34%
Average payment per case	\$179.56	\$181.18	\$232.00	-22.61%
Average payment per recipient	\$93.68	\$94.32	\$116.00	-19.24%
Number of cases with benefits reduced to zero	1	1	1	0.00%
Number of recipients with benefits reduced to zero	1	1	1	0.00%
Number of adult recipients with benefit reduced to zero	0	0	0	0%
Number of child recipients with benefit reduced to zero	1	1	1	0.00%

Two-Parent Families	Nov 30, 2017	October 2017	November 2016	Annual Change
Number of families receiving TANF Grants	1	2	1	0.00%
Total number of grant recipients	2	10	5	-60.00%
Number of adult grant recipients	0	2	2	-100.00%
Number of child grant recipients	2	8	3	-33.33%
Total payments	\$54	\$576	\$405	-86.67%
Average payment per case	\$54.00	\$288.00	\$405.00	-86.67%
Average payment per recipient	\$27.00	\$57.60	\$81.00	-66.67%
Number of cases with benefits reduced to zero	0	0	0	0%
Number of recipients with benefits reduced to zero	0	0	0	0%
Number of adult recipients with benefit reduced to zero	0	0	0	0%
Number of child recipients with benefit reduced to zero	0	0	0	0%

Note:

All data July 2014 and following will be broken out according to the new DFR region structure effective July 1 2014.

Source:



DIVISION OF FAMILY RESOURCES

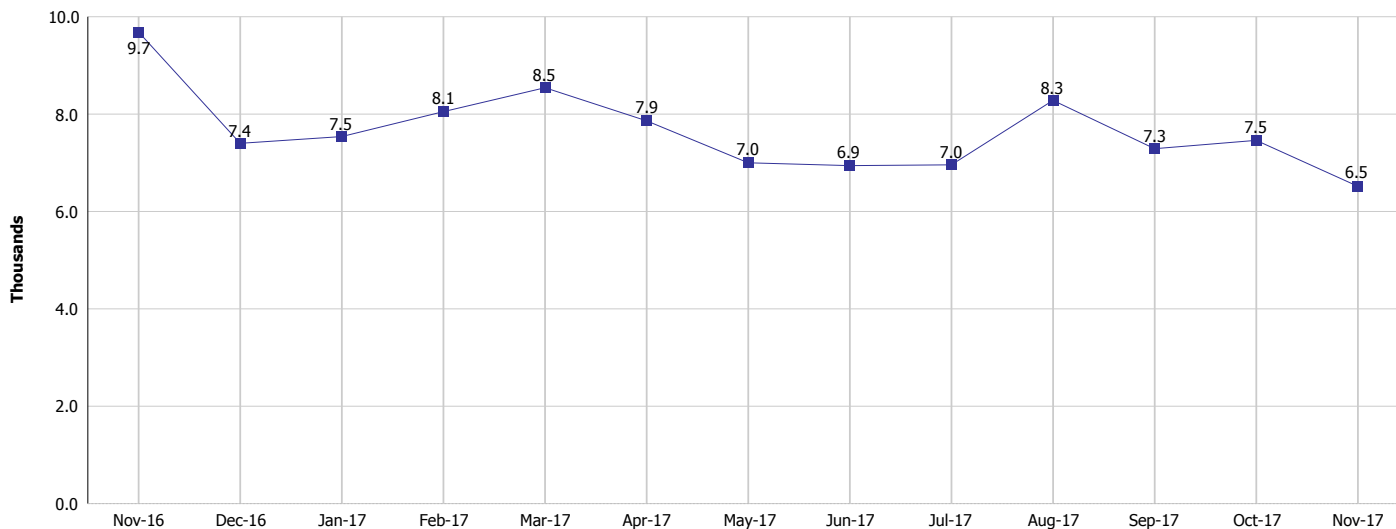
Monthly Management Report

Reporting Month: November 2017

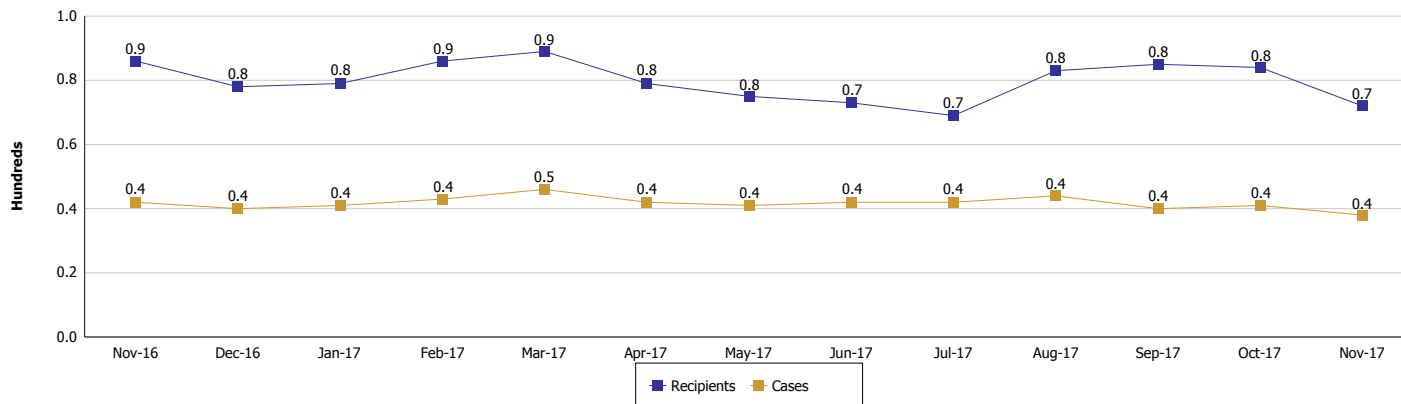
Location: Miami County

TEMPORARY ASSISTANCE FOR NEEDY FAMILIES (TANF)

TANF Regular And TANF Two-Parent Cash Assistance



TANF Cases and Recipients (TANF Regular and TANF Two-Parent)



Note:

All data July 2014 and following will be broken out according to the new DFR region structure effective July 1 2014.



DIVISION OF FAMILY RESOURCES

Monthly Management Report

Reporting Month: November 2017

Location: Miami County

SUPPLEMENTAL NUTRITION ASSISTANCE PROGRAM (SNAP)

	November 2017	October 2017	November 2016	Annual Change
Total issuance	\$429,130	\$430,999	\$485,487	-11.61%
Number of households receiving SNAP benefits	1,668	1,662	1,785	-6.55%
Number of recipients	3,848	3,853	4,210	-8.60%
Average issuance per household	\$257.27	\$259.33	\$271.98	-5.41%
Average issuance per recipient	\$111.52	\$111.86	\$115.32	-3.30%

Note:

All data July 2014 and following will be broken out according to the new DFR region structure effective July 1 2014.



DIVISION OF FAMILY RESOURCES

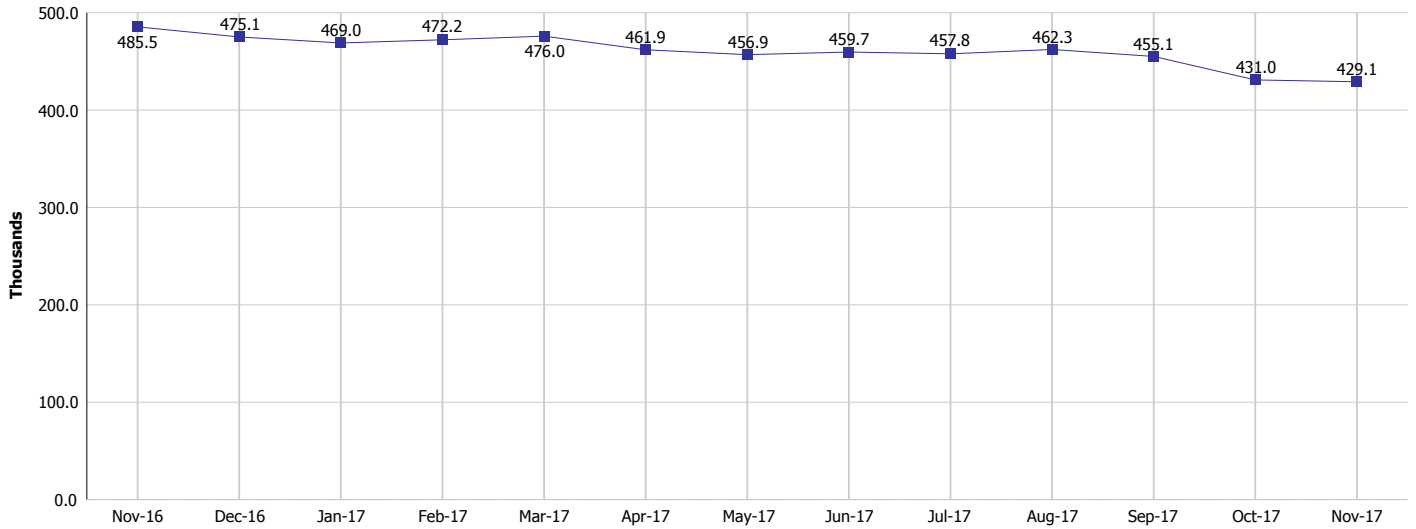
Monthly Management Report

Reporting Month: November 2017

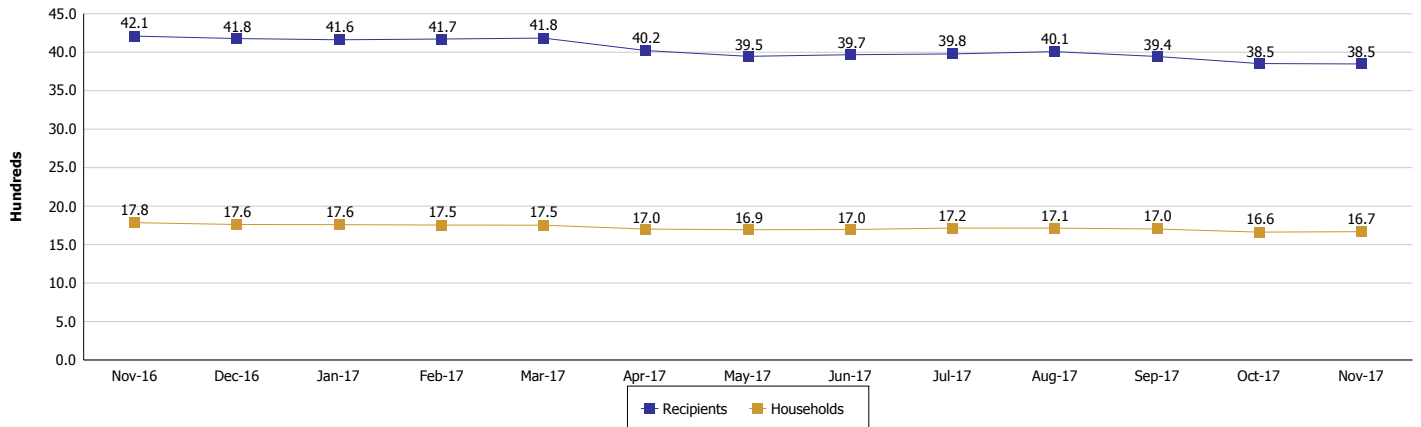
Location: Miami County

SUPPLEMENTAL NUTRITION ASSISTANCE PROGRAM (SNAP)

SNAP Issuance



SNAP Households and Recipients



Note:

All data July 2014 and following will be broken out according to the new DFR region structure effective July 1 2014.



DIVISION OF FAMILY RESOURCES

Monthly Management Report

Reporting Month: November 2017

Location: Miami County

HIP 2.0 and SNAP

	November 2017	October 2017	November 2016	Annual Change
Total HIP 2.0 Members	2,641	2,650	2,492	5.98%
HIP Members also SNAP Recipients	1,000	1,004	1,083	-7.66%
Percentage HIP Members SNAP Recipients	37.9%	37.9%	43.5%	1.92%
HIP Members SNAP ABAWDs	27	25	24	12.50%
Percentage HIP Members SNAP ABAWDs	1.0%	0.9%	1.0%	1.92%

Note:

All data July 2014 and following will be broken out according to the new DFR region structure effective July 1 2014.



DIVISION OF FAMILY RESOURCES

Monthly Management Report

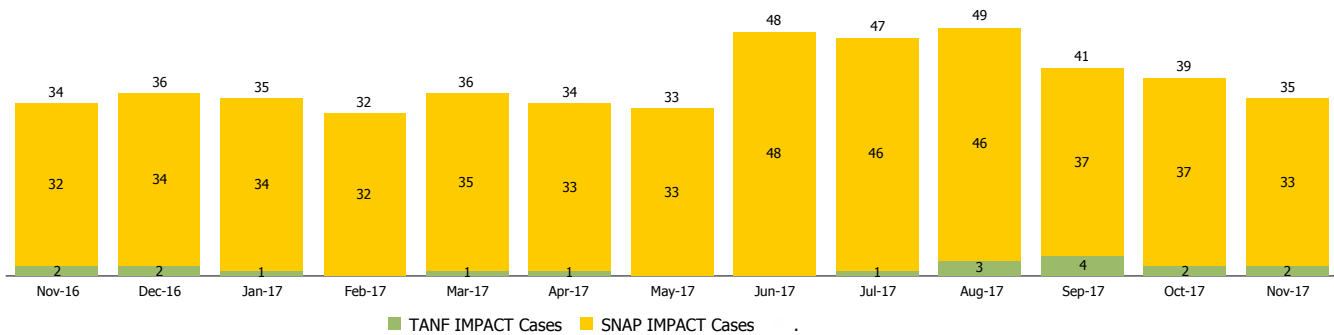
Reporting Month: November 2017

Location: Miami County

INDIANA MANPOWER PLACEMENT AND COMPREHENSIVE TRAINING (IMPACT)

	November 2017	October 2017	November 2016	Annual Change
Number of IMPACT cases	35	39	34	2.94%
Number of TANF IMPACT adults	2	2	2	0.00%
Number of SNAP IMPACT Cases	33	37	32	3.12%
Total number of adults employed	7	28	3	133.33%
Number of TANF IMPACT adults newly employed (within past 30 days)	0	5	0	
Number of SNAP IMPACT adults employed	7	23	3	133.33%
Total number of adults ineligible due to employment	32	32	55	-41.82%
Number of TANF adults ineligible due to employment	0	0	0	
Number of SNAP adults ineligible due to employment	32	32	55	-41.82%

IMPACT Caseloads
(SNAP, TANF, Total Caseload)



Note:

All data July 2014 and following will be broken out according to the new DFR region structure effective July 1 2014.