



## DIVISION OF FAMILY RESOURCES

# Martin County Monthly Management Report October 2017

### State of Indiana

Eric Holcomb  
Governor

### Family and Social Services Administration

Jennifer Walthall, M.D.  
Secretary

### Division of Family Resources

Adrienne Shields  
Director

For questions regarding data on this report contact:  
[office.Communications@fssa.IN.gov](mailto:office.Communications@fssa.IN.gov)



## State of Indiana

Published November 2017



## DIVISION OF FAMILY RESOURCES

### Monthly Management Report

Reporting Month: October 2017

Location: Martin County

#### TEMPORARY ASSISTANCE FOR NEEDY FAMILIES (TANF)

Child-Only and One-Parent Families	Oct 31, 2017	September 2017	October 2016	Annual Change
Number of families receiving TANF Grants	13	12	10	30.00%
Total number of grant recipients	26	25	21	23.81%
Number of adult grant recipients	1	1	2	-50.00%
Number of child grant recipients	25	24	19	31.58%
Total payments	\$2,512	\$2,373	\$1,918	30.97%
Average payment per case	\$193.23	\$197.75	\$191.80	0.75%
Average payment per recipient	\$96.62	\$94.92	\$91.33	5.78%
Number of cases with benefits reduced to zero	0	0	0	0%
Number of recipients with benefits reduced to zero	0	0	0	0%
Number of adult recipients with benefit reduced to zero	0	0	0	0%
Number of child recipients with benefit reduced to zero	0	0	0	0%

Two-Parent Families	Oct 31, 2017	September 2017	October 2016	Annual Change
Number of families receiving TANF Grants	0	0	1	-100.00%
Total number of grant recipients	0	0	4	-100.00%
Number of adult grant recipients	0	0	2	-100.00%
Number of child grant recipients	0	0	2	-100.00%
Total payments	\$0	\$0	\$346	-100.00%
Average payment per case	\$0.00	\$0.00	\$346.00	-100.00%
Average payment per recipient	\$0.00	\$0.00	\$86.50	-100.00%
Number of cases with benefits reduced to zero	0	0	0	0%
Number of recipients with benefits reduced to zero	0	0	0	0%
Number of adult recipients with benefit reduced to zero	0	0	0	0%
Number of child recipients with benefit reduced to zero	0	0	0	0%

**Note:**

All data July 2014 and following will be broken out according to the new DFR region structure effective July 1 2014.

Source:



## DIVISION OF FAMILY RESOURCES

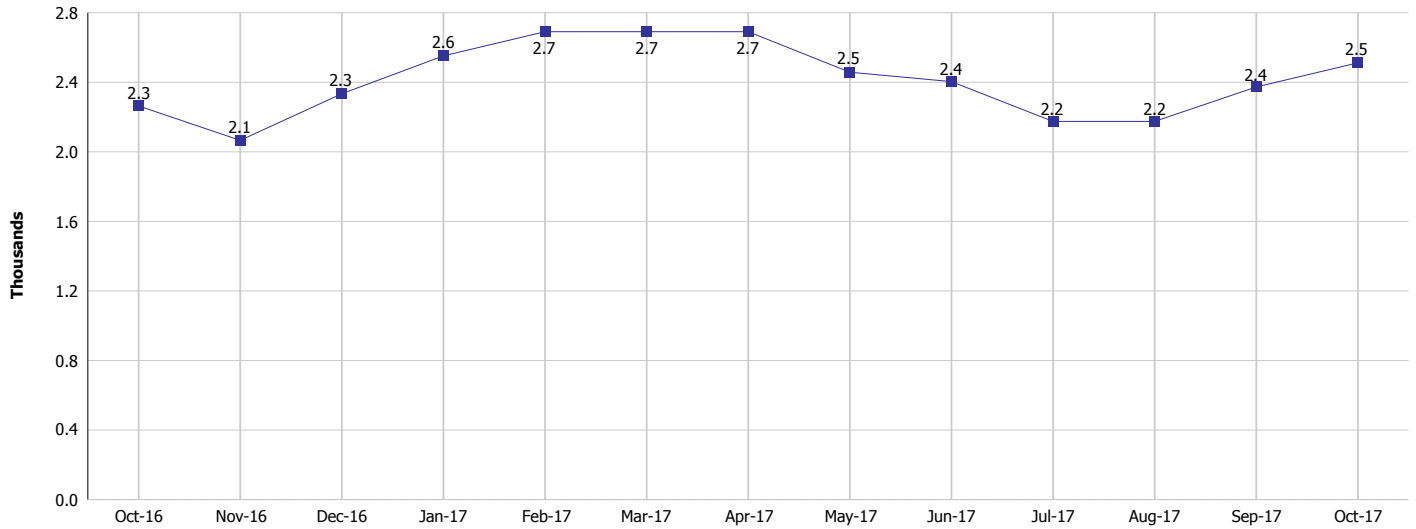
### Monthly Management Report

Reporting Month: October 2017

Location: Martin County

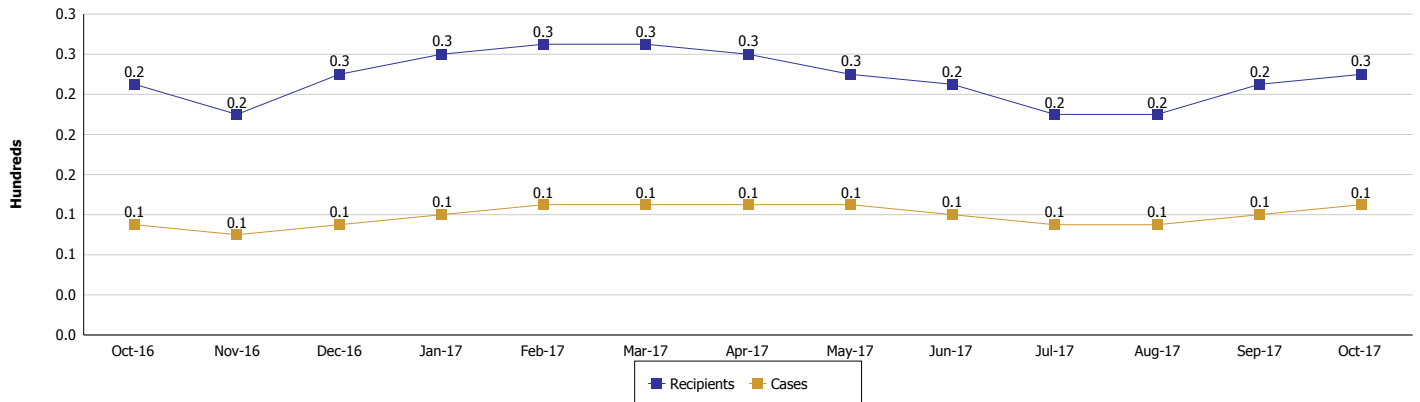
#### TEMPORARY ASSISTANCE FOR NEEDY FAMILIES (TANF)

#### TANF Regular And TANF Two-Parent Cash Assistance



#### TANF Cases and Recipients

(TANF Regular and TANF Two-Parent)



#### Note:

All data July 2014 and following will be broken out according to the new DFR region structure effective July 1 2014.



## DIVISION OF FAMILY RESOURCES

### Monthly Management Report

Reporting Month: October 2017

Location: Martin County

#### SUPPLEMENTAL NUTRITION ASSISTANCE PROGRAM (SNAP)

	October 2017	September 2017	October 2016	Annual Change
Total issuance	\$82,329	\$85,478	\$98,883	-16.74%
Number of households receiving SNAP benefits	346	352	410	-15.61%
Number of recipients	751	780	909	-17.38%
Average issuance per household	\$237.95	\$242.84	\$241.18	-1.34%
Average issuance per recipient	\$109.63	\$109.59	\$108.78	0.78%

**Note:**

All data July 2014 and following will be broken out according to the new DFR region structure effective July 1 2014.



# DIVISION OF FAMILY RESOURCES

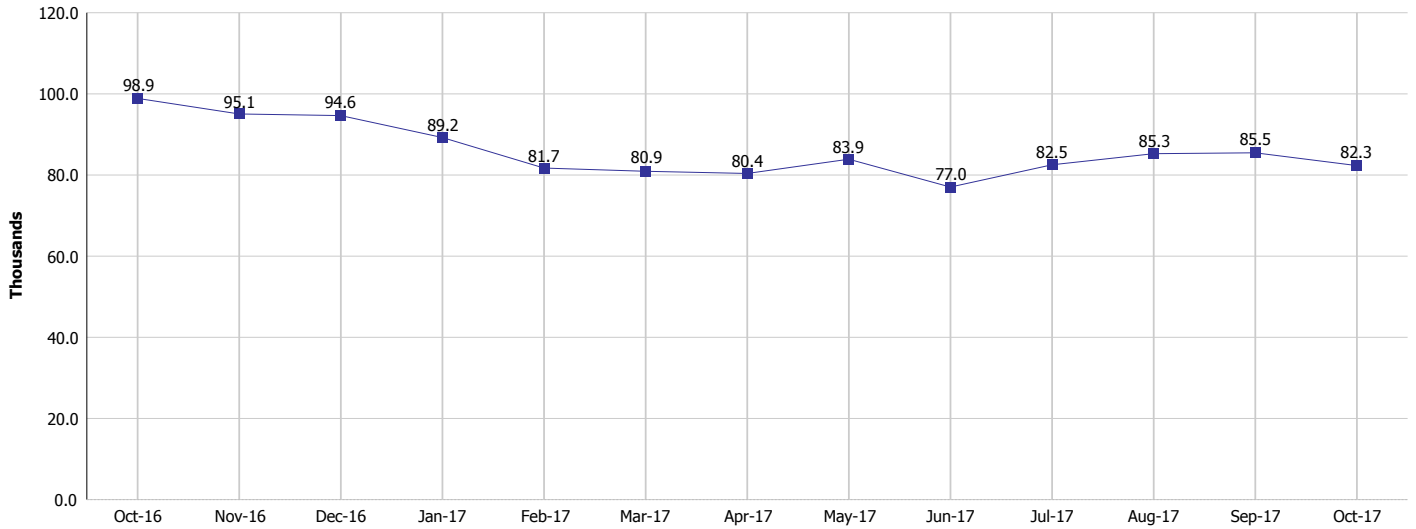
## Monthly Management Report

Reporting Month: October 2017

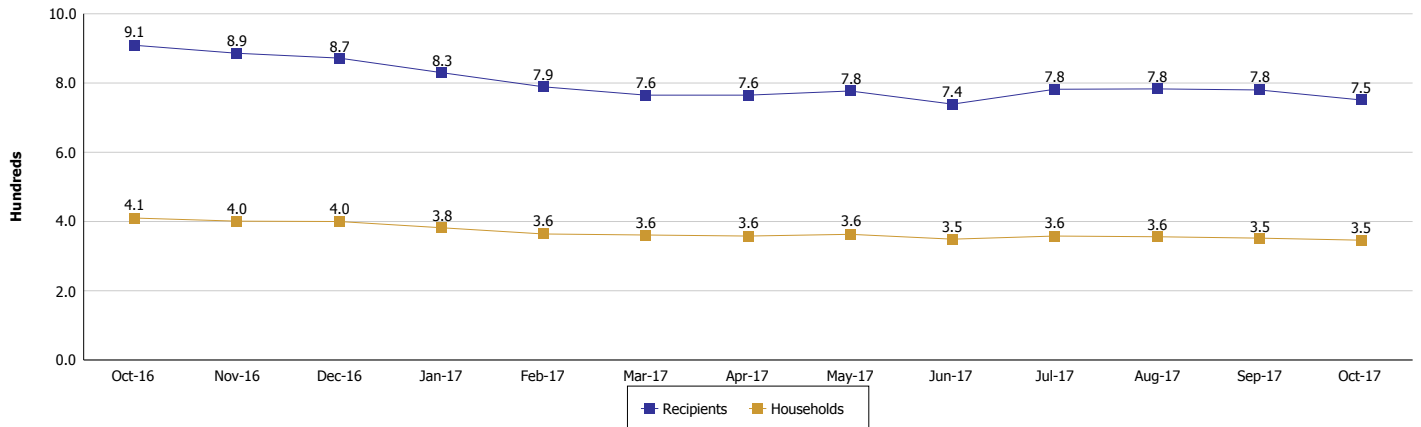
Location: Martin County

### SUPPLEMENTAL NUTRITION ASSISTANCE PROGRAM (SNAP)

#### SNAP Issuance



#### SNAP Households and Recipients



#### Note:

All data July 2014 and following will be broken out according to the new DFR region structure effective July 1 2014.



## DIVISION OF FAMILY RESOURCES

### Monthly Management Report

Reporting Month: October 2017

Location: Martin County

#### HIP 2.0 and SNAP

	October 2017	September 2017	October 2016	Annual Change
Total HIP 2.0 Members	619	630	662	-6.50%
HIP Members also SNAP Recipients	194	207	241	-19.50%
Percentage HIP Members SNAP Recipients	31.3%	32.9%	36.4%	-10.31%
HIP Members SNAP ABAWDs	5	6	9	-44.44%
Percentage HIP Members SNAP ABAWDs	0.8%	1.0%	1.4%	-10.31%

**Note:**

All data July 2014 and following will be broken out according to the new DFR region structure effective July 1 2014.



## DIVISION OF FAMILY RESOURCES

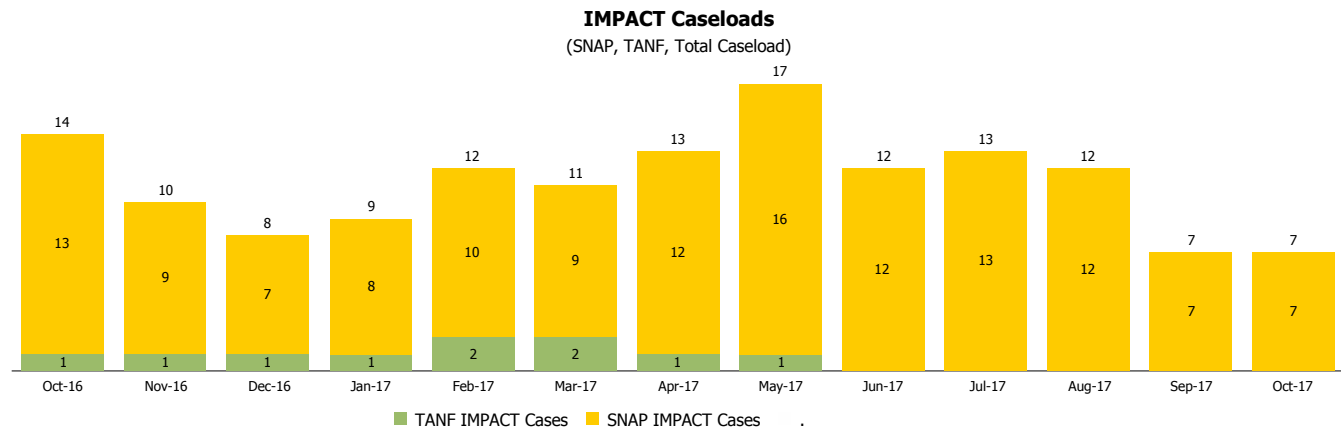
### Monthly Management Report

Reporting Month: October 2017

Location: Martin County

#### INDIANA MANPOWER PLACEMENT AND COMPREHENSIVE TRAINING (IMPACT)

	October 2017	September 2017	October 2016	Annual Change
Number of IMPACT cases	7	7	14	-50.00%
Number of TANF IMPACT adults	0	0	1	-100.00%
Number of SNAP IMPACT Cases	7	7	13	-46.15%
Total number of adults employed	5	2	2	150.00%
Number of TANF IMPACT adults newly employed (within past 30 days)	1	0	0	
Number of SNAP IMPACT adults employed	4	2	2	100.00%
Total number of adults ineligible due to employment	4	4	6	-33.33%
Number of TANF adults ineligible due to employment	0	0	0	
Number of SNAP adults ineligible due to employment	4	4	6	-33.33%



**Note:**

All data July 2014 and following will be broken out according to the new DFR region structure effective July 1 2014.