



DIVISION OF FAMILY RESOURCES

Lawrence County Monthly Management Report October 2017

State of Indiana

Eric Holcomb
Governor

Family and Social Services Administration

Jennifer Walthall, M.D.
Secretary

Division of Family Resources

Adrienne Shields
Director

For questions regarding data on this report contact:
office.Communications@fssa.IN.gov



State of Indiana

Published November 2017



DIVISION OF FAMILY RESOURCES

Monthly Management Report

Reporting Month: October 2017

Location: Lawrence County

TEMPORARY ASSISTANCE FOR NEEDY FAMILIES (TANF)

Child-Only and One-Parent Families	Oct 31, 2017	September 2017	October 2016	Annual Change
Number of families receiving TANF Grants	44	45	45	-2.22%
Total number of grant recipients	78	83	79	-1.27%
Number of adult grant recipients	3	4	5	-40.00%
Number of child grant recipients	75	79	74	1.35%
Total payments	\$8,669	\$8,126	\$8,115	6.83%
Average payment per case	\$197.02	\$180.58	\$180.33	9.25%
Average payment per recipient	\$111.14	\$97.90	\$102.72	8.20%
Number of cases with benefits reduced to zero	0	1	2	-100.00%
Number of recipients with benefits reduced to zero	0	2	2	-100.00%
Number of adult recipients with benefit reduced to zero	0	1	0	0%
Number of child recipients with benefit reduced to zero	0	1	2	-100.00%

Two-Parent Families	Oct 31, 2017	September 2017	October 2016	Annual Change
Number of families receiving TANF Grants	2	2	3	-33.33%
Total number of grant recipients	7	7	10	-30.00%
Number of adult grant recipients	3	3	4	-25.00%
Number of child grant recipients	4	4	6	-33.33%
Total payments	\$427	\$427	\$715	-40.28%
Average payment per case	\$213.50	\$213.50	\$238.33	-10.42%
Average payment per recipient	\$61.00	\$61.00	\$71.50	-14.69%
Number of cases with benefits reduced to zero	0	0	0	0%
Number of recipients with benefits reduced to zero	0	0	0	0%
Number of adult recipients with benefit reduced to zero	0	0	0	0%
Number of child recipients with benefit reduced to zero	0	0	0	0%

Note:

All data July 2014 and following will be broken out according to the new DFR region structure effective July 1 2014.

Source:



DIVISION OF FAMILY RESOURCES

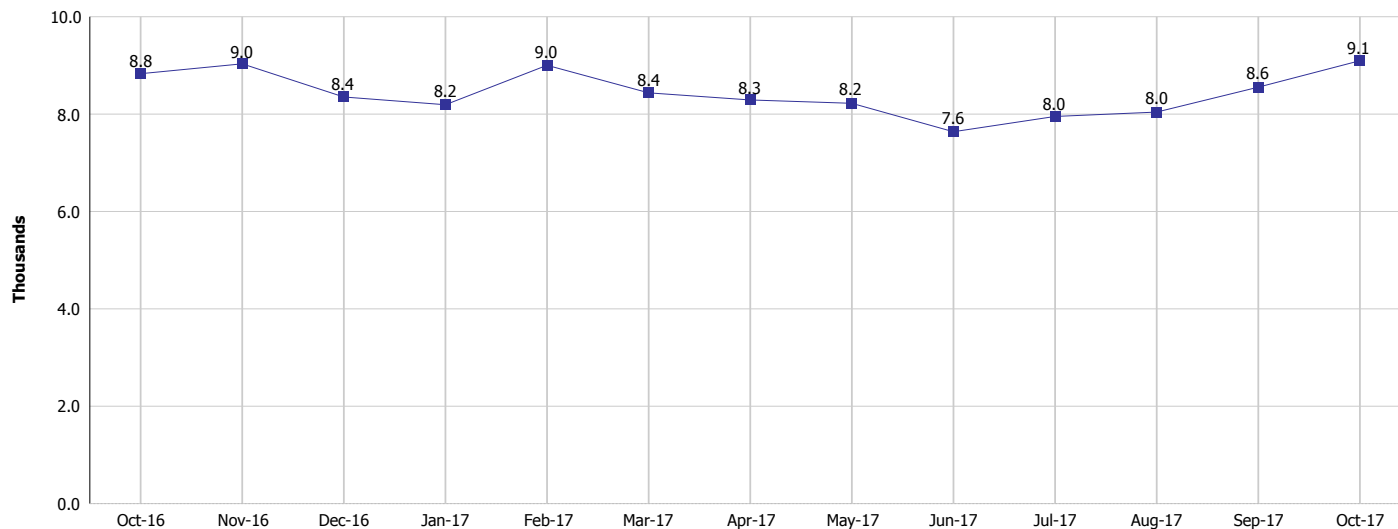
Monthly Management Report

Reporting Month: October 2017

Location: Lawrence County

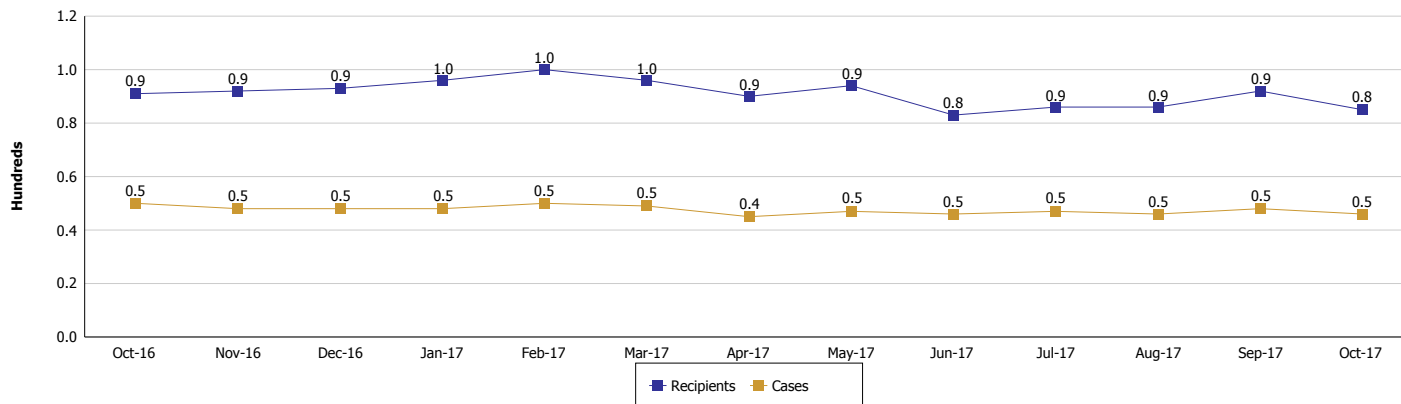
TEMPORARY ASSISTANCE FOR NEEDY FAMILIES (TANF)

TANF Regular And TANF Two-Parent Cash Assistance



TANF Cases and Recipients

(TANF Regular and TANF Two-Parent)



Note:

All data July 2014 and following will be broken out according to the new DFR region structure effective July 1 2014.



DIVISION OF FAMILY RESOURCES

Monthly Management Report

Reporting Month: October 2017

Location: Lawrence County

SUPPLEMENTAL NUTRITION ASSISTANCE PROGRAM (SNAP)

	October 2017	September 2017	October 2016	Annual Change
Total issuance	\$408,597	\$422,987	\$464,280	-11.99%
Number of households receiving SNAP benefits	1,782	1,794	1,944	-8.33%
Number of recipients	3,971	3,991	4,416	-10.08%
Average issuance per household	\$229.29	\$235.78	\$238.83	-3.99%
Average issuance per recipient	\$102.9	\$105.99	\$105.14	-2.13%

Note:

All data July 2014 and following will be broken out according to the new DFR region structure effective July 1 2014.



DIVISION OF FAMILY RESOURCES

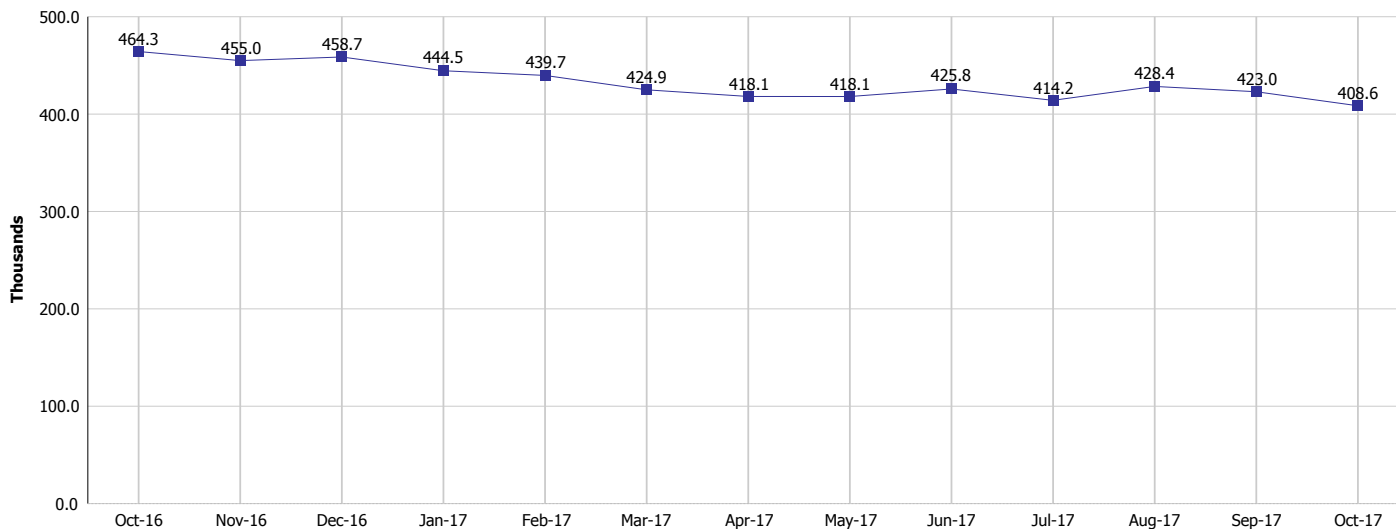
Monthly Management Report

Reporting Month: October 2017

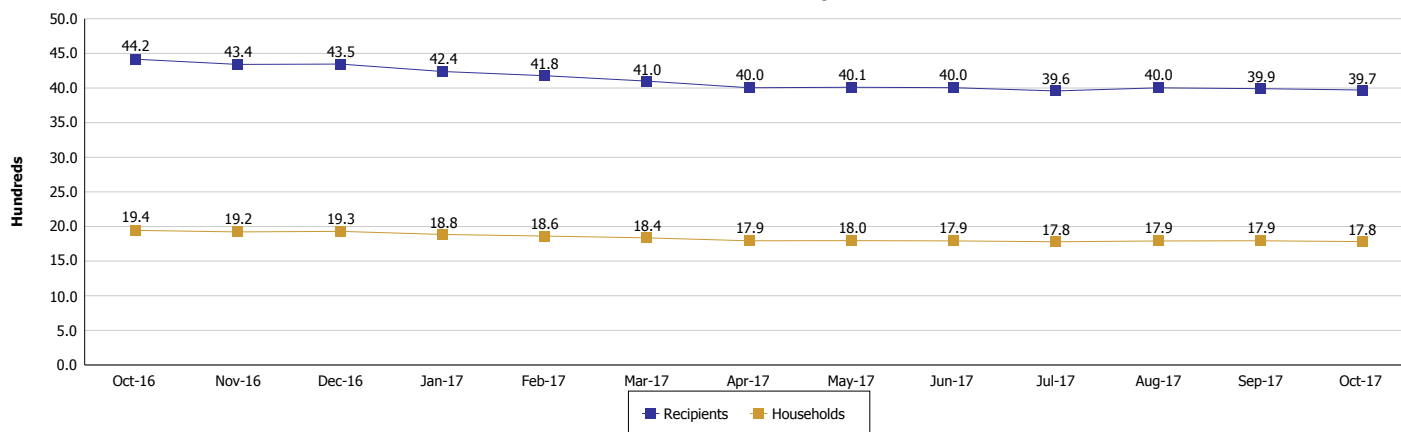
Location: Lawrence County

SUPPLEMENTAL NUTRITION ASSISTANCE PROGRAM (SNAP)

SNAP Issuance



SNAP Households and Recipients



Note:

All data July 2014 and following will be broken out according to the new DFR region structure effective July 1 2014.



DIVISION OF FAMILY RESOURCES

Monthly Management Report

Reporting Month: October 2017

Location: Lawrence County

HIP 2.0 and SNAP

	October 2017	September 2017	October 2016	Annual Change
Total HIP 2.0 Members	3,327	3,320	3,248	2.43%
HIP Members also SNAP Recipients	1,013	999	1,108	-8.57%
Percentage HIP Members SNAP Recipients	30.4%	30.1%	34.1%	-0.23%
HIP Members SNAP ABAWDs	29	28	23	26.09%
Percentage HIP Members SNAP ABAWDs	0.9%	0.8%	0.7%	-0.23%

Note:

All data July 2014 and following will be broken out according to the new DFR region structure effective July 1 2014.



DIVISION OF FAMILY RESOURCES

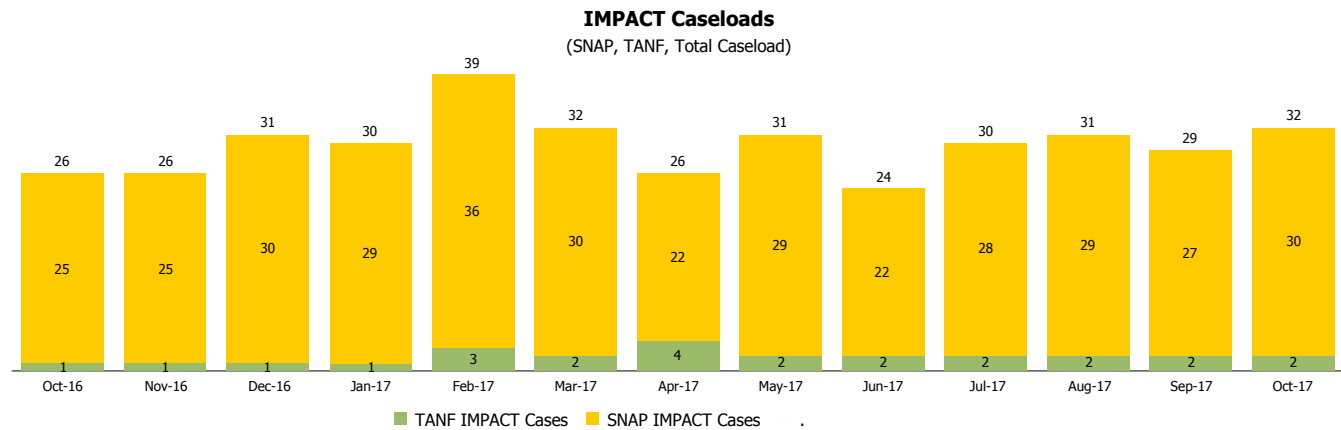
Monthly Management Report

Reporting Month: October 2017

Location: Lawrence County

INDIANA MANPOWER PLACEMENT AND COMPREHENSIVE TRAINING (IMPACT)

	October 2017	September 2017	October 2016	Annual Change
Number of IMPACT cases	32	29	26	23.08%
Number of TANF IMPACT adults	2	2	1	100.00%
Number of SNAP IMPACT Cases	30	27	25	20.00%
Total number of adults employed	14	7	3	366.67%
Number of TANF IMPACT adults newly employed (within past 30 days)	0	0	0	
Number of SNAP IMPACT adults employed	14	7	3	366.67%
Total number of adults ineligible due to employment	35	26	28	25.00%
Number of TANF adults ineligible due to employment	0	0	0	
Number of SNAP adults ineligible due to employment	35	26	28	25.00%



Note:

All data July 2014 and following will be broken out according to the new DFR region structure effective July 1 2014.