



DIVISION OF FAMILY RESOURCES

Lagrange County Monthly Management Report December 2017

State of Indiana

Eric Holcomb
Governor

Family and Social Services Administration

Jennifer Walthall, M.D.
Secretary

Division of Family Resources

Adrienne Shields
Director

For questions regarding data on this report contact:
office.Communications@fssa.IN.gov



State of Indiana

Published January 2018



DIVISION OF FAMILY RESOURCES

Monthly Management Report

Reporting Month: December 2017

Location: Lagrange County

TEMPORARY ASSISTANCE FOR NEEDY FAMILIES (TANF)

Child-Only and One-Parent Families	Dec 31, 2017	November 2017	December 2016	Annual Change
Number of families receiving TANF Grants	15	13	13	15.38%
Total number of grant recipients	43	37	35	22.86%
Number of adult grant recipients	6	5	5	20.00%
Number of child grant recipients	37	32	30	23.33%
Total payments	\$3,529	\$3,190	\$2,623	34.54%
Average payment per case	\$235.27	\$245.38	\$201.77	16.60%
Average payment per recipient	\$82.07	\$86.22	\$74.94	9.51%
Number of cases with benefits reduced to zero	0	0	0	0%
Number of recipients with benefits reduced to zero	0	0	0	0%
Number of adult recipients with benefit reduced to zero	0	0	0	0%
Number of child recipients with benefit reduced to zero	0	0	0	0%

Two-Parent Families	Dec 31, 2017	November 2017	December 2016	Annual Change
Number of families receiving TANF Grants	1	1	3	-66.67%
Total number of grant recipients	5	5	14	-64.29%
Number of adult grant recipients	1	1	5	-80.00%
Number of child grant recipients	4	4	9	-55.56%
Total payments	\$256	\$256	\$800	-68.00%
Average payment per case	\$256.00	\$256.00	\$266.67	-4.00%
Average payment per recipient	\$51.20	\$51.20	\$57.14	-10.40%
Number of cases with benefits reduced to zero	0	0	0	0%
Number of recipients with benefits reduced to zero	0	0	0	0%
Number of adult recipients with benefit reduced to zero	0	0	0	0%
Number of child recipients with benefit reduced to zero	0	0	0	0%

Note:

All data July 2014 and following will be broken out according to the new DFR region structure effective July 1 2014.

Source:



DIVISION OF FAMILY RESOURCES

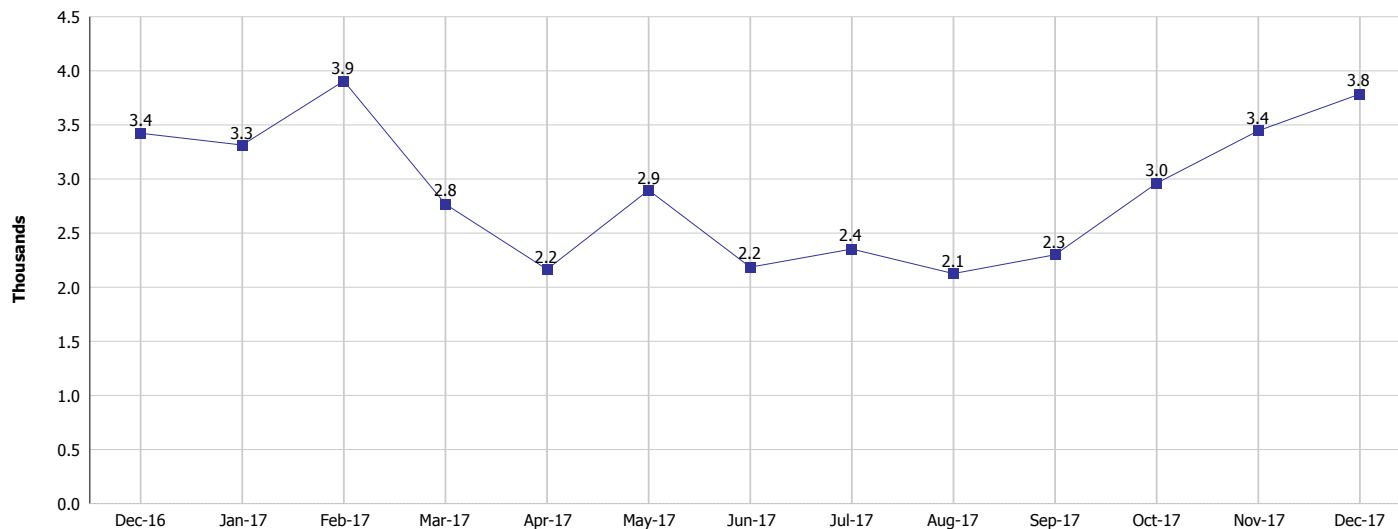
Monthly Management Report

Reporting Month: December 2017

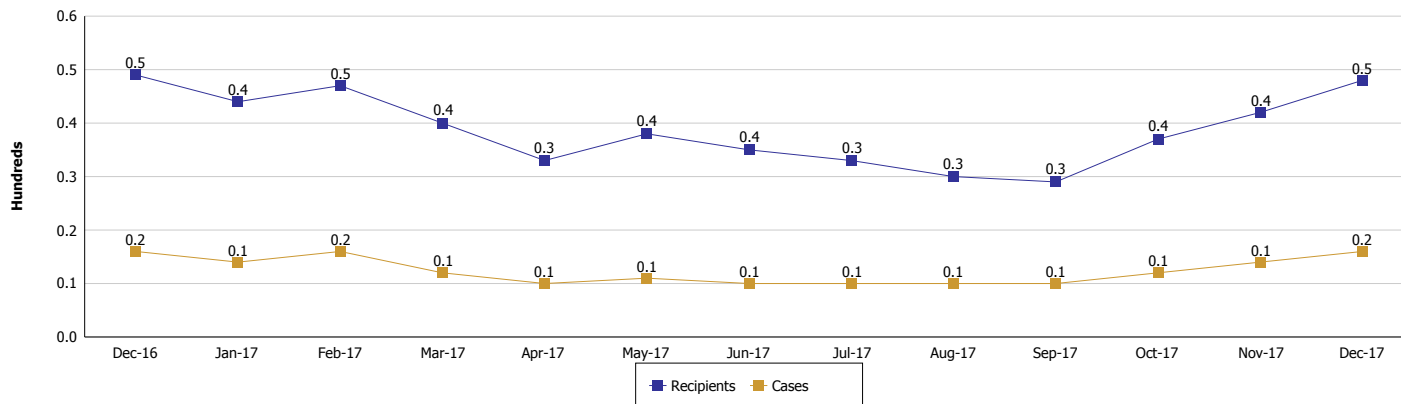
Location: Lagrange County

TEMPORARY ASSISTANCE FOR NEEDY FAMILIES (TANF)

TANF Regular And TANF Two-Parent Cash Assistance



TANF Cases and Recipients (TANF Regular and TANF Two-Parent)



Note:

All data July 2014 and following will be broken out according to the new DFR region structure effective July 1 2014.



DIVISION OF FAMILY RESOURCES

Monthly Management Report

Reporting Month: December 2017

Location: Lagrange County

SUPPLEMENTAL NUTRITION ASSISTANCE PROGRAM (SNAP)

	December 2017	November 2017	December 2016	Annual Change
Total issuance	\$140,340	\$142,564	\$163,489	-14.16%
Number of households receiving SNAP benefits	593	597	652	-9.05%
Number of recipients	1,283	1,320	1,498	-14.35%
Average issuance per household	\$236.66	\$238.8	\$250.75	-5.62%
Average issuance per recipient	\$109.38	\$108	\$109.14	0.22%

Note:

All data July 2014 and following will be broken out according to the new DFR region structure effective July 1 2014.



DIVISION OF FAMILY RESOURCES

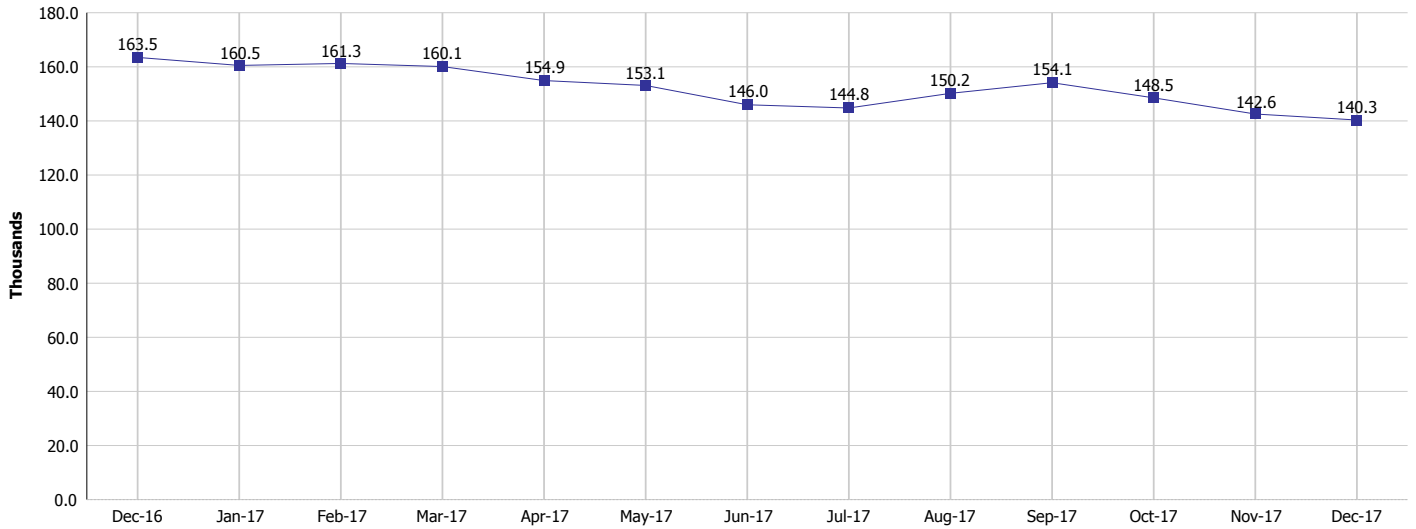
Monthly Management Report

Reporting Month: December 2017

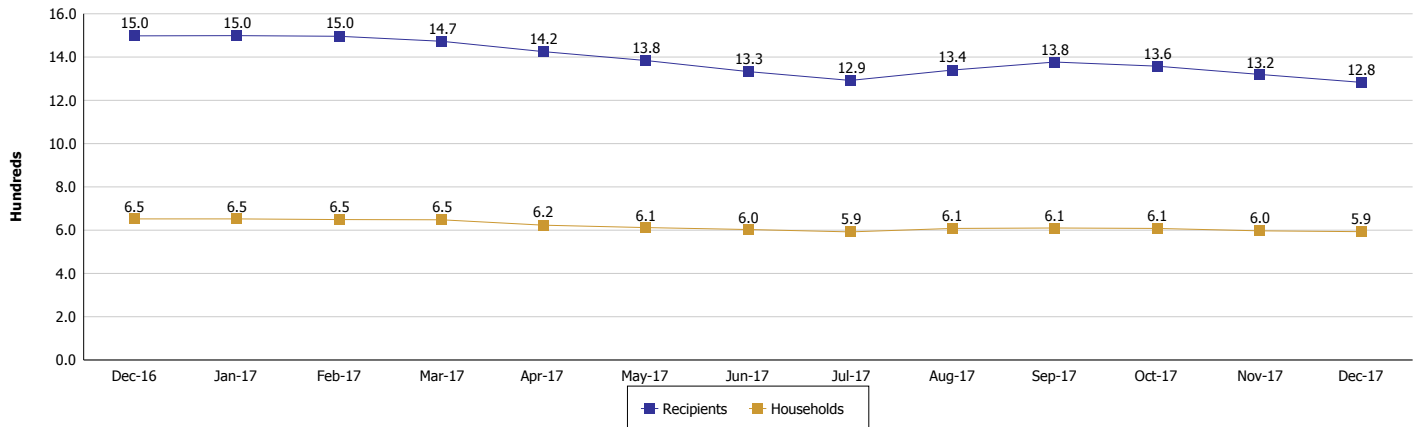
Location: Lagrange County

SUPPLEMENTAL NUTRITION ASSISTANCE PROGRAM (SNAP)

SNAP Issuance



SNAP Households and Recipients



Note:

All data July 2014 and following will be broken out according to the new DFR region structure effective July 1 2014.



DIVISION OF FAMILY RESOURCES

Monthly Management Report

Reporting Month: December 2017

Location: Lagrange County

HIP 2.0 and SNAP

	December 2017	November 2017	December 2016	Annual Change
Total HIP 2.0 Members	1,111	1,108	1,062	4.61%
HIP Members also SNAP Recipients	289	297	322	-10.25%
Percentage HIP Members SNAP Recipients	26.0%	26.8%	30.3%	0.79%
HIP Members SNAP ABAWDs	4	6	9	-55.56%
Percentage HIP Members SNAP ABAWDs	0.4%	0.5%	0.8%	0.79%

Note:

All data July 2014 and following will be broken out according to the new DFR region structure effective July 1 2014.



DIVISION OF FAMILY RESOURCES

Monthly Management Report

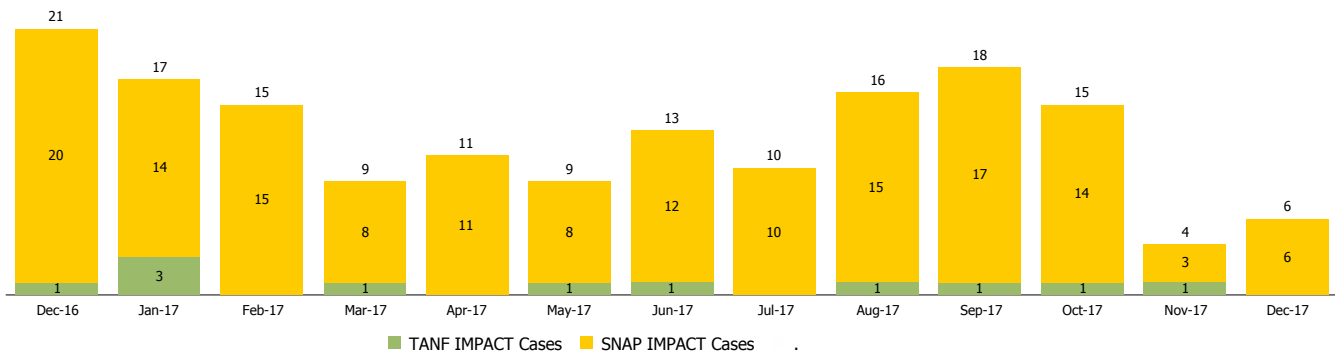
Reporting Month: December 2017

Location: Lagrange County

INDIANA MANPOWER PLACEMENT AND COMPREHENSIVE TRAINING (IMPACT)

	December 2017	November 2017	December 2016	Annual Change
Number of IMPACT cases	6	4	21	-71.43%
Number of TANF IMPACT adults	0	1	1	-100.00%
Number of SNAP IMPACT Cases	6	3	20	-70.00%
Total number of adults employed	1	3	3	-66.67%
Number of TANF IMPACT adults newly employed (within past 30 days)	0	0	0	
Number of SNAP IMPACT adults employed	1	3	3	-66.67%
Total number of adults ineligible due to employment	23	7	11	109.09%
Number of TANF adults ineligible due to employment	0	0	0	
Number of SNAP adults ineligible due to employment	23	7	11	109.09%

IMPACT Caseloads
(SNAP, TANF, Total Caseload)



Note:

All data July 2014 and following will be broken out according to the new DFR region structure effective July 1 2014.